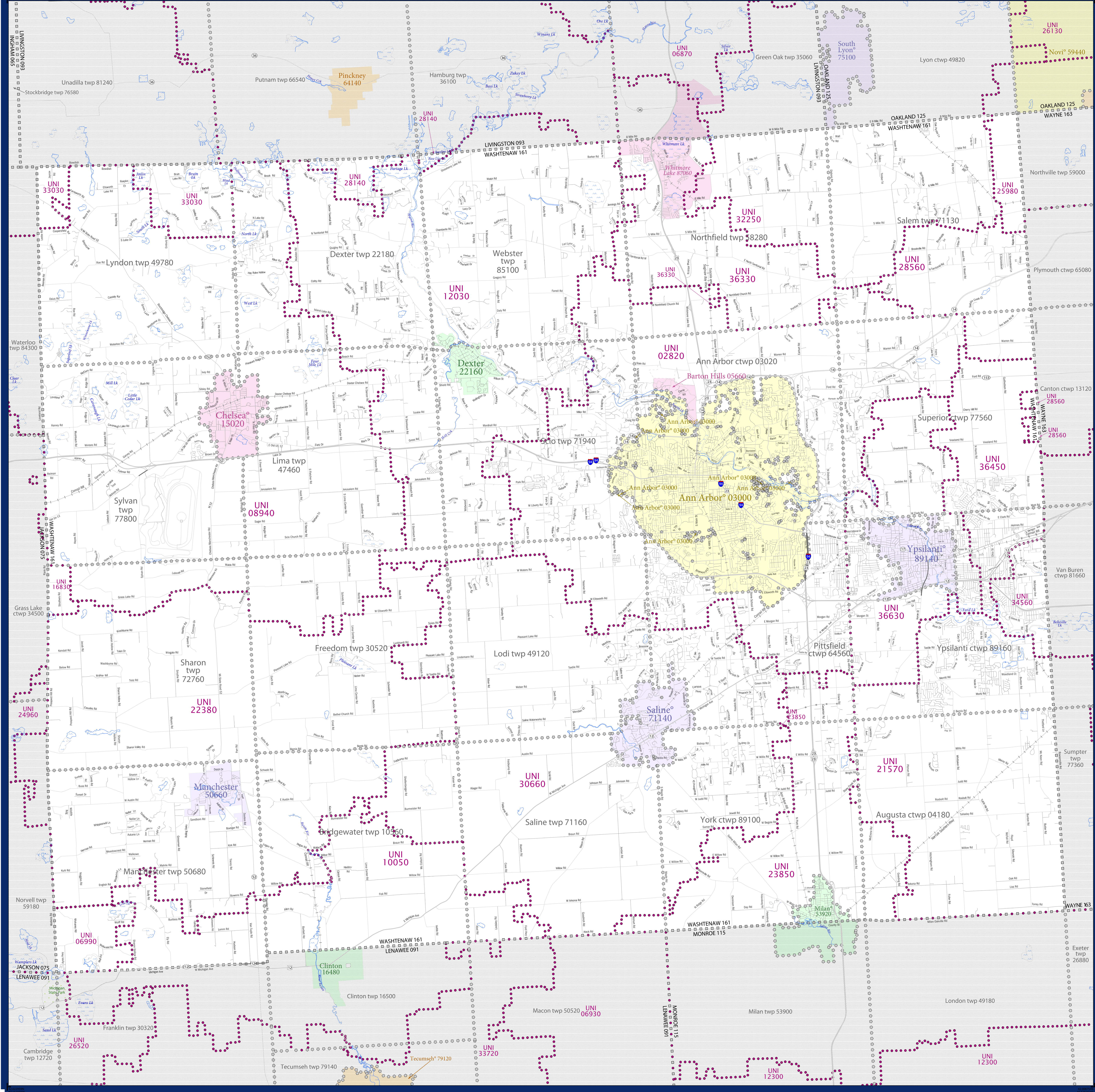


SCHOOL DISTRICT REFERENCE MAP (2010 CENSUS): Washtenaw County, MI



LEGEND

| SYMBOL DESCRIPTION | SYMBOL | SYMBOL | SYMBOL |
|---|----------|-----------------------|----------|
| Federal American Indian Reservation | [Symbol] | L'ANSE RES 1880 | [Symbol] |
| Off-Reservation Trust Land | [Symbol] | T1880 | [Symbol] |
| State American Indian Reservation | [Symbol] | Tama Res 4125 | [Symbol] |
| Alaska Native Regional Corporation | [Symbol] | NANA ANRC 52120 | [Symbol] |
| State (or statistically equivalent entity) | [Symbol] | NEW YORK 36 | [Symbol] |
| County (or statistically equivalent entity) | [Symbol] | ERIE 029 | [Symbol] |
| Minor Civil Division (MCD) ^{1,2} | [Symbol] | Bristol town 07485 | [Symbol] |
| Consolidated City | [Symbol] | MILFORD 47500 | [Symbol] |
| Incorporated Place ³ | [Symbol] | Davis 18100 | [Symbol] |
| Census Designated Place (CDP) ³ | [Symbol] | Incline Village 35100 | [Symbol] |
| Unified School District | [Symbol] | UNI 03370 | [Symbol] |
| Secondary School District | [Symbol] | SEC 99965 | [Symbol] |
| Elementary School District | [Symbol] | ELM 02220 | [Symbol] |

Where state, county, and/or MCD boundaries coincide, the map shows the boundary symbol for only the highest-ranking of these boundaries.

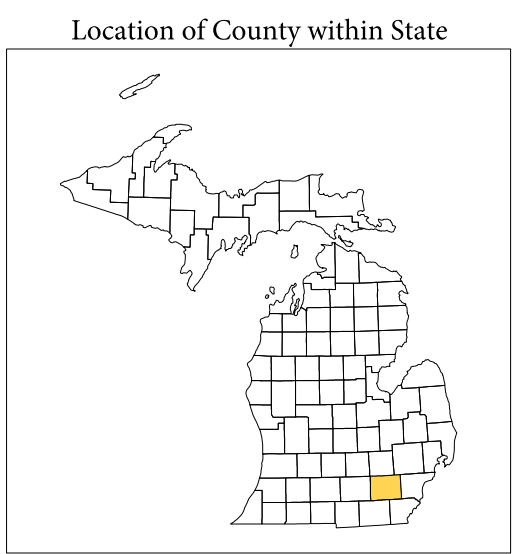
1 A "*" following an MCD name denotes a false MCD. A "*" following a place name indicates that a false MCD exists with the same name and FIPS code as the place; the false MCD label is not shown.

2 MCD boundaries are shown in the following states in which MCDs have functioning governments: Connecticut, Maine, Massachusetts, Michigan, Minnesota, New Hampshire, New Jersey, New York, Pennsylvania, Rhode Island, Vermont, and Wisconsin.

3 Place label color correlates to the place fill color.

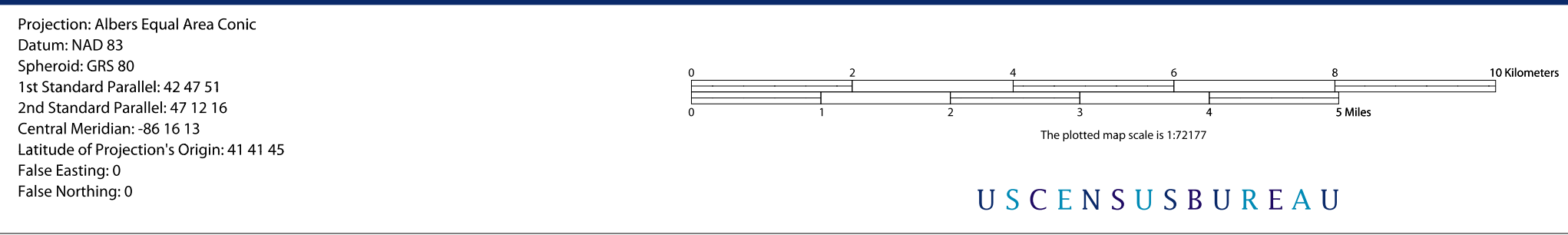
SCHOOL DISTRICTS WITHIN COUNTY

| TYPE | CODE | NAME |
|------|-------|--------------------------------------|
| UNI | 02020 | Ann Arbor Public Schools |
| UNI | 06990 | Columbia School District |
| UNI | 08940 | Chelsea School District |
| UNI | 10050 | Clinton Community Schools |
| UNI | 12030 | Dexter Community School District |
| UNI | 18830 | Grass Lake Community Schools |
| UNI | 21210 | Lincoln Consolidated School District |
| UNI | 22380 | Manchester Community Schools |
| UNI | 23850 | Milan Area Schools |
| UNI | 25980 | Northville Public Schools |
| UNI | 28140 | Pinkney Community Schools |
| UNI | 28560 | Plymouth-Canton Community Schools |
| UNI | 30660 | Saline Area Schools |
| UNI | 32250 | South Lyon Community Schools |
| UNI | 33800 | Stockbridge Community Schools |
| UNI | 34560 | Van Buren Public Schools |
| UNI | 36130 | Whittem Lake Public Schools |
| UNI | 36450 | Willow Run Community Schools |
| UNI | 36650 | Ypsilanti School District |



All legal boundaries and names are as of January 1, 2010. The boundaries shown on this map are for census bureau statistical data collection and tabulation purposes only; their depiction and designation for statistical purposes does not constitute a determination of jurisdictional authority or rights of ownership or entitlement.

Geographic Vintage: 2010 Census (reference date: January 1, 2010)
 Data Source: U.S. Census Bureau's MAI/TIGER database (TAB010226)
 Map Created by Geography Division: January 05, 2011



PARENT SHEET 1
 Total Sheets: 1
 Index Sheets: 0
 Parent Sheets: 1
 Inset Sheets: 0

NAME: Washtenaw County (161)
 ENTITY TYPE: County or statistically equivalent entity
 ST: Michigan (26)

2010 SD MAP (PARENT)
 2012/04/09