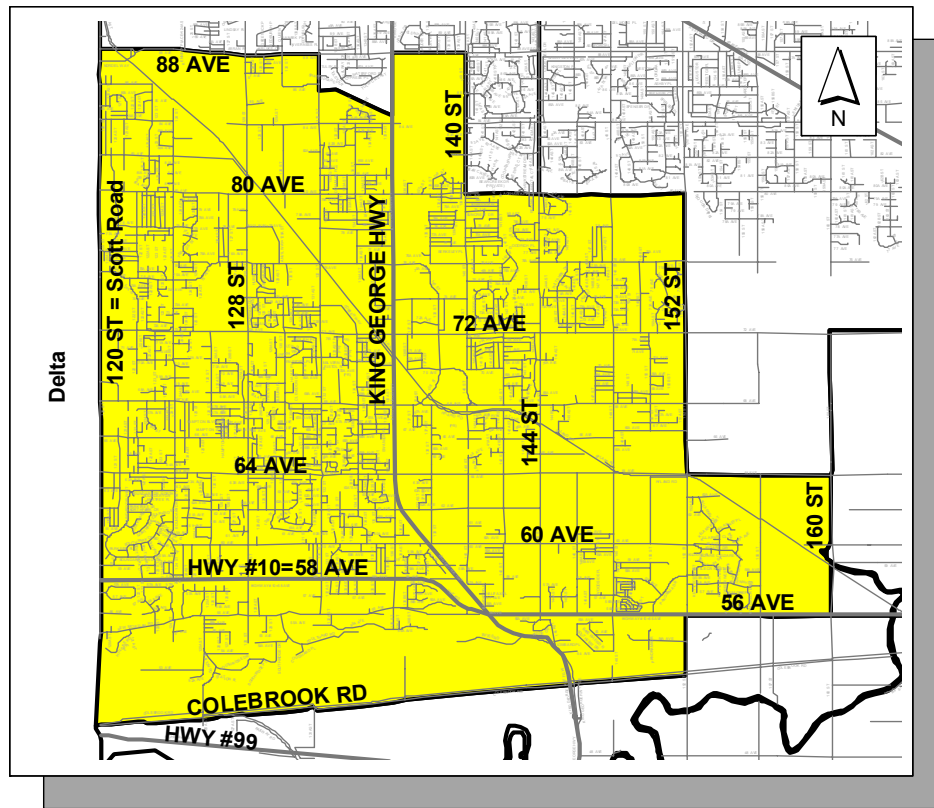


City of Surrey

Community Profile 2001 Census

Newton



2001 Census Profile

Newton

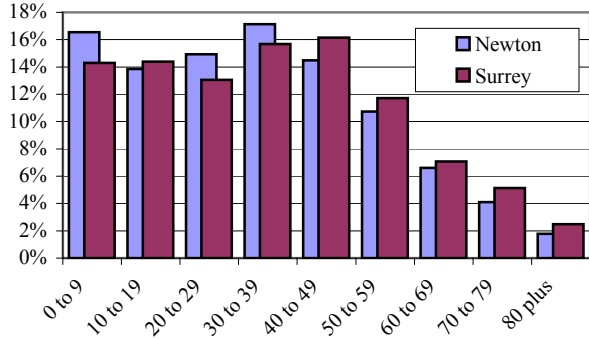
Surrey

Total Population	91,595	347,825
Total Persons Older than 65	7,825	36,290
Total Visible Minorities	48,055	127,015
Total Private Dwellings	27,950	115,715
Total Labour Force	46,755	177,145
Average Household Income	\$61,159	\$63,197

(Definitions are provided on page4)

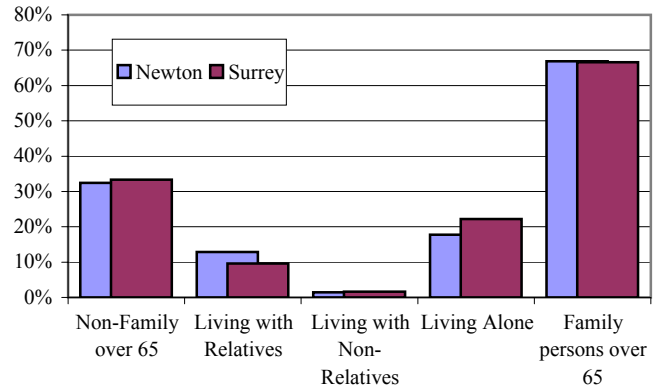
Total Population by Age - 2001

Total Population	Newton		Surrey	
	#	%	#	%
Age				
0 to 9	15,150	16.5%	49,765	14.3%
10 to 19	12,695	13.9%	50,080	14.4%
20 to 29	13,675	14.9%	45,435	13.1%
30 to 39	15,685	17.1%	54,550	15.7%
40 to 49	13,265	14.5%	56,130	16.1%
50 to 59	9,825	10.7%	40,800	11.7%
60 to 69	6,055	6.6%	24,600	7.1%
70 to 79	3,765	4.1%	17,835	5.1%
80 plus	1,625	1.8%	8,635	2.5%



Total number of Persons Older than Age 65 - 2001

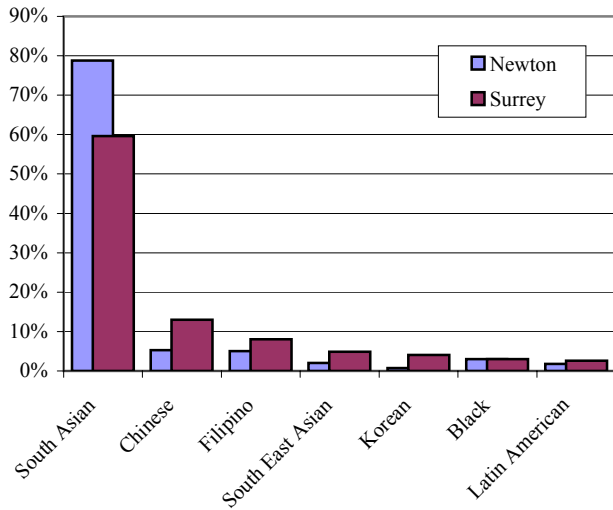
Total persons over 65	Newton		Surrey	
	#	%	#	%
Non-Family over 65	2,535	32.4%	12,115	33.4%
Living with Relatives	1,005	12.8%	3,470	9.6%
Living with Non-Relatives	110	1.4%	595	1.6%
Living Alone	1,390	17.8%	8,050	22.2%
Family persons over 65	5,235	66.9%	24,175	66.6%



Total Visible Minority Population - 2001

Total Visible Minority	Newton		Surrey	
	#	%	#	%
South Asian	37,880	78.8%	75,680	59.6%
Chinese	2,555	5.3%	16,475	13.0%
Filipino	2,435	5.1%	10,235	8.1%
South East Asian	965	2.0%	6,210	4.9%
Korean	335	0.7%	5,195	4.1%
Black	1,455	3.0%	3,810	3.0%
Latin American	845	1.8%	3,315	2.6%

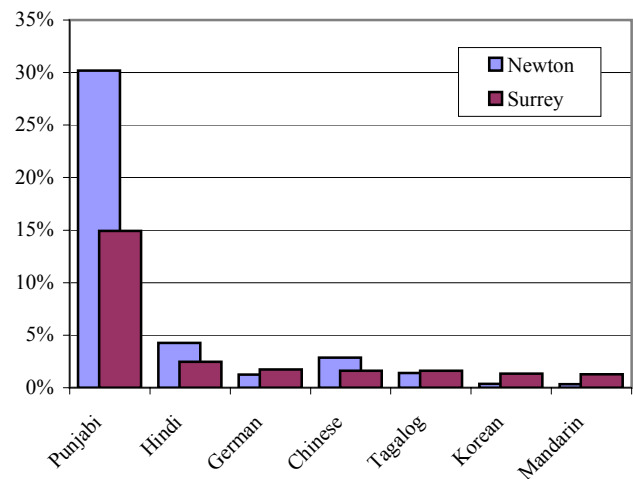
(Includes only the most common Surrey categories)



Total Population by Mother Tongue (First Language Learned) - 2001

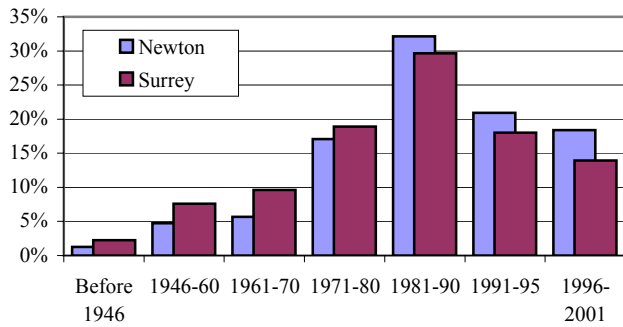
Total Single Responses	Newton		Surrey	
	#	%	#	%
English	45,005	50.6%	213,675	63.0%
Punjabi	26,855	30.2%	50,615	14.9%
Hindi	3,790	4.3%	8,385	2.5%
German	1,105	1.2%	5,870	1.7%
Chinese	2,555	2.9%	5,470	1.6%
Tagalog	1,240	1.4%	5,455	1.6%
Korean	335	0.4%	4,590	1.4%
Mandarin	290	0.3%	4,375	1.3%

(Includes only the most common Surrey categories.)



Total number of Occupied Private Dwellings & Period of Construction - 2001

	Newton		Surrey	
	#	%	#	%
Total Private Dwellings	27,950	100%	115,715	100%
Owned	19,505	69.8%	82,695	71.5%
Rented	8,410	30.1%	33,020	28.5%
Total Dwellings by Type	27,915	100.0%	115,715	100.0%
Single Detached	12,490	44.7%	64,060	55.4%
Semi Detached	765	2.7%	3,175	2.7%
Row Housing	3,185	11.4%	10,820	9.4%
Apart. Detached Duplex	5,365	19.2%	13,385	11.6%
Apart. > 5 Storeys	215	0.8%	2,670	2.3%
Apart. < 5 Storeys	5,085	18.2%	19,770	17.1%

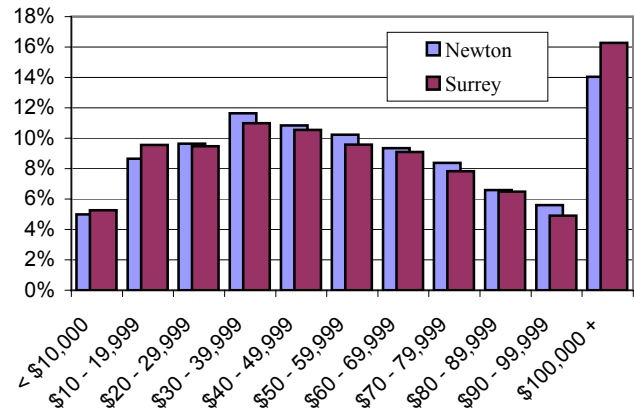


Average Household Income - 2000

	Newton	Surrey
Average Household Income	\$61,159	\$63,197
	%	%

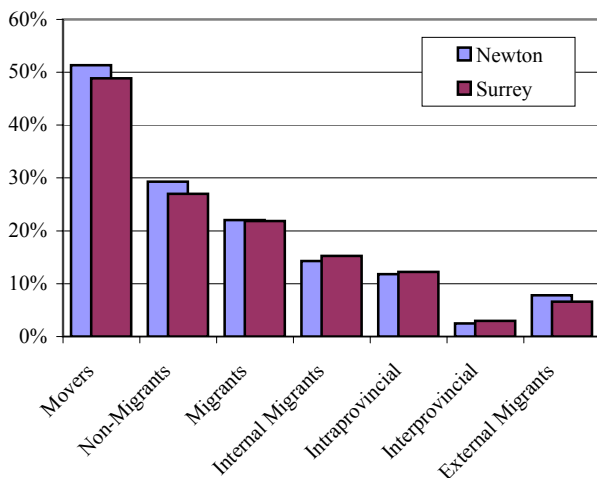
Total Income Composition	Newton	Surrey
Employment	80.2	79.2
Gov't Transfer Payments	12.0	10.9
Other	6.2	9.9

Incidence of Low Income	19.6	18.3
Total all private households	27,830	115,710



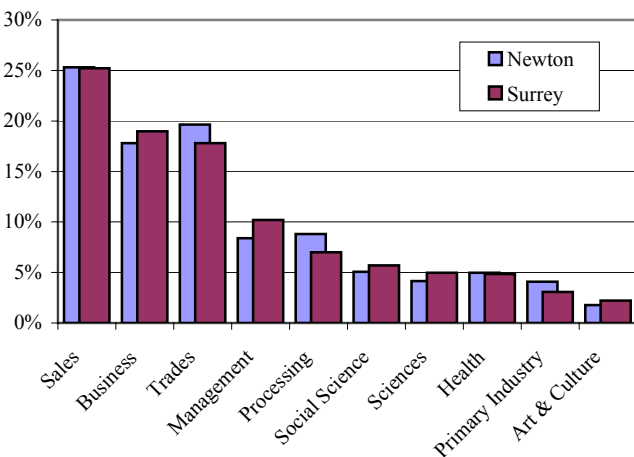
Total Population Age 5 & Older by Mobility Status - 2001

Population by Mobility	Newton		Surrey	
	#	%	#	%
Non-Movers	83,520		322,125	
Movers	40,605	48.6%	164,715	51.1%
Non-Migrants	42,900	51.4%	157,405	48.9%
Non-Migrants	24,485	29.3%	87,005	27.0%
Migrants	18,400	22.0%	70,405	21.9%
Internal Migrants	11,945	14.3%	49,090	15.2%
Intraprovincial	9,860	11.8%	39,440	12.2%
Interprovincial	2,065	2.5%	9,650	3.0%
External Migrants	6,500	7.8%	21,310	6.6%



Total Labour Force Age 15 & Older by Occupation - 2001

Total Labour Force	Newton		Surrey	
	#	%	#	%
Sales	46,755		177,145	
Sales	11,840	25.3%	44,680	25.2%
Business	8,330	17.8%	33,630	19.0%
Trades	9,180	19.6%	31,515	17.8%
Management	3,925	8.4%	18,090	10.2%
Processing	4,125	8.8%	12,385	7.0%
Social Science	2,370	5.1%	10,125	5.7%
Sciences	1,945	4.2%	8,795	5.0%
Health	2,330	5.0%	8,560	4.8%
Primary Industry	1,915	4.1%	5,435	3.1%
Art & Culture	825	1.8%	3,925	2.2%



Definitions

Non-family - A non-family household consists either of one person living alone or of two or more persons who share a dwelling, but do not constitute a family (e.g., a couple with or without children).

Family - Refers to a household that contains at least one census family, that is, a married couple with or without children, or a couple living common-law with or without children, or a lone parent living with one or more children (lone-parent family).

Visible Minority - as 'persons, other than Aboriginal peoples, who are non-Caucasian in race or non-white in colour'.

Average Household Income - is calculated by dividing the total income of all households by the number of households in that area.

Incidence of Low Income - is the percentage of economic families or individuals below the low income cut-off level. (Low Income Cut-off - having to spend 20% or more, than the average family spends on food, shelter and clothing.)

Movers - are persons who, on census day, were living at a different address than the one at which they resided five years earlier.

Non-Migrants - are movers who, on Census Day, were living at a different address, but in the same city as the one they lived in five years earlier.

Migrants - are movers who, on Census Day, were residing in a different city five years earlier (internal migrants) or who were living outside Canada five years earlier (external migrants).

Internal Migrants - are movers who on Census Day were residing in a different city than five years earlier.

External Migrants - are movers who on Census Day were living outside of Canada five years earlier.

Intraprovincial migrants - are movers who, on Census Day, were living in a different city than the one in which they resided five years earlier, in the same province.

Interprovincial migrants - are movers who, on Census Day, were living in a different city than the one in which they resided five years earlier, in a different province.

Apartment Detached Duplex - one of two dwellings, located one above the other, but not attached to any other building or dwelling or structure and have open space on all sides.

Semi-Detached - one of two dwellings attached side by side to each other, but not to any other building or dwelling or structure and have open space on all sides.

Single Detached - a single dwelling not attached to any other dwelling or structure.