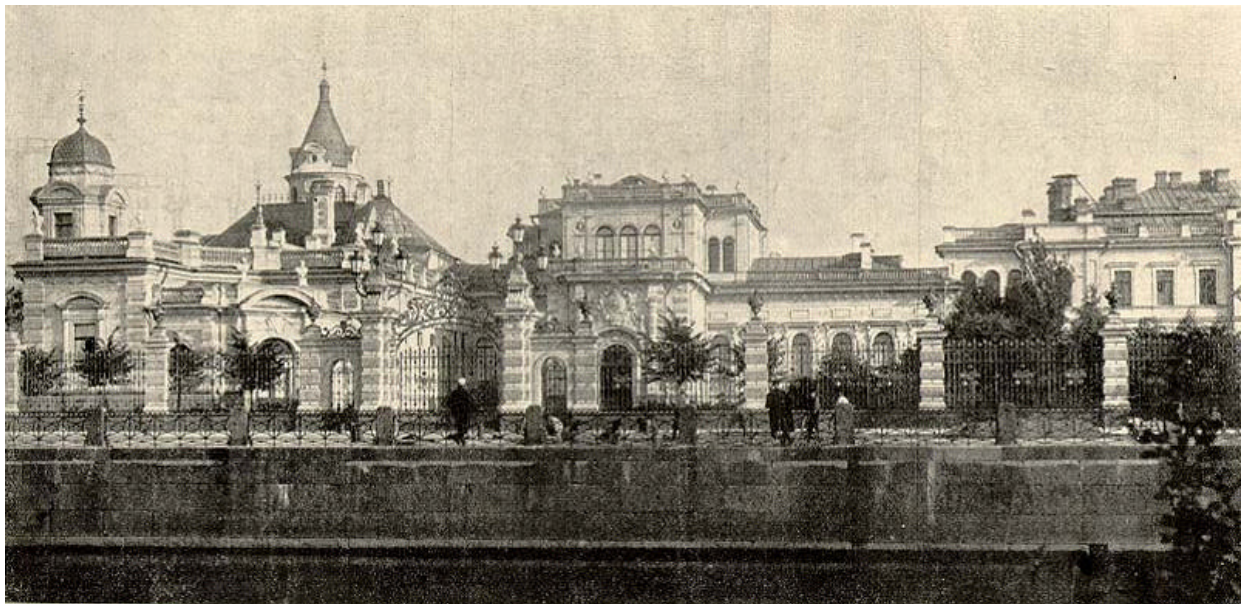


Palace of Grand Duke Alexei Alexandrovich

(Дворец великого князя Алексея Александровича)



Historical engraving of the Palace from the River Moika. The elaborate fence and gates were one of the central elements in the architectural ensemble.

PROJECT OVERVIEW

The 1880s Palace of Grand Duke Alexei Alexandrovich, brother of Tsar Alexander III, is one of the most interesting examples of eclectic architecture in St. Petersburg. Each façade of the palace was designed in a different style and the interior decorations recalled a great many decorative traditions, from English Renaissance to rococo. Among the most stunning features of the palace is the wrought iron and stone fence that surrounds the gardens. The central gates in the fence are ornamented with the Grand Duke's monogram—a rare existing display of royalty, overlooked during the Soviet period.

Today the palace is in great disrepair. The property, with its rich decorations, beautiful fence, and parklands, has held protected federal landmark status since 1968, but requires urgent major capital restoration work in order to restore this truly unique architectural monument.

Facts at a glance:

- * 1883-85 Maximilian Messmacher reconstruction of earlier building for the Grand Duke Alexei Aleksandrovich (brother of the tsar)
- * located on the Moika River with easy access to the Gulf of Finland
- * 9,200 square meters requiring complete redevelopment, including restoration of individual elements