

Item Report

Copyright in this document belongs to Sydney Water Corporation ("Sydney Water"). Except as permitted under the Copyright Act 1968 (Cth). While the copyright of all information and text appearing on this web site belongs to Sydney Water, you are welcome to use the information and text for non-commercial purposes. Any use of this copyright material for commercial purposes, and without Sydney Water's express permission, may result in an action for breach of copyright.

Sydney Water does not make any statement about the completeness or accuracy of the information on this report and you should not rely on any information as presented here.

Sydney Water distributes materials and documents on this website as a free service and as information sources only. By virtue of your entry to this site you acknowledge that Sydney Water accepts no responsibility or liability for your usage of these materials.

Ashfield Reservoir (Elevated) (WS 0003)

Item Details

Number: 4575750

Current Name: Ashfield Reservoir (Elevated) (WS 0003)

Other Name: (WS 0003)

Primary Address

Location: Holden Street Ashbury NSW 2193

LGA: Canterbury

LGA Region: Sydney

DUAP Region: Sydney South

Parish:

County:

Alternate Address

Location: Armstrong Street Ashbury NSW 2193

LGA: Canterbury

LGA Region: Sydney

DUAP Region: Sydney South

Parish:

County:

Owner: Sydney Water

Current Use: Reservoir.

Former Use: Reservoir.

Item Type: Built

Item Group: Utilities - Water

Item Category: Water Supply Reservoir/ Dam

Parcels:

Parcel Code:	LOT
Lot Number:	1
Plan Code:	DP
Plan Number:	911478
Parcel Code:	LOT
Lot Number:	1
Plan Code:	DP
Plan Number:	115504
Parcel Code:	LOT
Lot Number:	1
Plan Code:	DP
Plan Number:	711077

Curtilage/Boundary: The curtilage includes Sydney Water's infrastructure within Lot 1 in DP no.115504 and Lot 1 in DP no.911478 to the west of Holden Street, as shown on the curtilage plan. The reservoir is highly visible to the surrounding residential areas and adjacent recreational Peace Park.

AMG Easting: 326577925

AMG Northing: 6247451452

Item Report

Ashfield Reservoir (Elevated) (WS 0003)

**Statement of
Significance:**

Ashfield Reservoir is of state significance for its historic, aesthetic and technical/research values. Ashfield Reservoir site is important for its role in the history of Sydney's water supply, continually operating in this function since 1888. The current Ashfield Reservoir, completed in 1914, has a historic and technical association with a class of reservoirs that utilised elevated riveted steel walls and reinforced concrete floor and posts, featured a capacity of over 0.5 megalitre, and were built between 1910 and 1914.

Ashfield Reservoir is representative of this class of reservoirs. It is rare, being one of only four reservoirs of this class ever constructed, each built to a unique design. The class/group as a whole is also important as the first major instance of elevated water service reservoirs built by the Metropolitan Water Sewerage and Drainage Board to utilise Monier concrete reinforcement system. Ashfield Reservoir structure has a certain potential research value in the analysis of the long-term performance of this construction method.

Design of Ashfield Reservoir, including Federation Free Classical architectural style, provides evidence of the cultural philosophy prevalent at the time of its construction, whereby public authorities exercised a conscious effort to integrate the appearance of public utility structures into the aesthetic context of the community. The boldness of Ashfield Reservoir, prominent skyline and detailing features landmark qualities, shows pride of its designers and demonstrates that the arrival of such structures within a community was regarded as a matter of achievement and material progress.

In local terms, Ashfield Reservoir is demonstrative of the extent of urban development in its service area and Sydney at the time of its construction, as evidenced by the selection of its locality and its size.

Endorsed Significance: State

Construction Information

Builder: Metropolitan Board of Water Supply and Sewerage

Designer: Metropolitan Board of Water Supply and Sewerage

Year Started: 1912

Year Completed: 1912

Circa: No

Physical Description: Ashfield Reservoir (Elevated) (WS 3) is one of a group of four similar elevated reservoirs in the SWC system, the others being Bellevue Hill Reservoir (WS 10), 1910, Drummoyne Reservoir (Elevated) (WS 38), 1910, and Penshurst Reservoir (Elevated) (WS 87), 1910.

Each reservoir is an elevated cylindrical riveted steel tank, resting on a concrete apron and supported on a steel girder frame. The perimeter of the steel stand has a façade of concrete columns and arches, which forms a decorative, rather than a structural feature. The walkway around the rim of the reservoir is attached to the outside and supported on brackets (decking planks removed).

Standard features include: handrail in tubular steel, davit, access ladder, trigonometric station, inlet and outlet valve chambers.

Full Service Level: 80 m.
Capacity: 4.6 ML.

The site.

The site includes workshops and offices, as well as access to the Pressure Tunnels. Two skid huts are located in the grounds and are a rare survival, demonstrating former working conditions in Metropolitan Water Supply & Drainage Board (MWS&DB).

Modifications Made: The reservoir has been roofed to safeguard water quality (1960s-1970s).

Sydney Water S170 Heritage Register



Item Report

Ashfield Reservoir (Elevated) (WS 0003)

Historical Notes

Ashfield Reservoir (Elevated) (WS 3), built in 1912, is one of a group of four similar elevated reservoirs in the SWC system, the others being Bellevue Hill Reservoir (Elevated) (WS 10), 1910, Drummoyne Reservoir (Elevated) (WS 38), 1910, and Penshurst Reservoir (Elevated) (WS 87), 1910.

Petersham Reservoir supplied western Sydney and Illawarra suburbs. A pumping station at Carlton lifted water to Penshurst to supply the higher areas of Kogarah.

Originally water from Woollahra Reservoir was fed back to Ashfield Reservoir (1888) to supply the higher areas in Inner West. By 1927 an additional main from Potts Hill supplied Ashfield Reservoir. The reservoir is now supplied by the City Tunnel.

Themes

National	State	Local	Local Description
Settlement	Utilities	Water Supply	Relates to the planning, development, expansion and provision of water supply.

SHR Criteria

- a) Historical:** Ashfield Reservoir (Elevated) (WS 3) is one of a small group of four similar elevated reservoirs, the others being Bellevue Hill Reservoir (WS 10), 1910, Drummoyne Reservoir (Elevated) (WS 38), 1910, and Penshurst Reservoir (Elevated) (WS 87), 1910.
- c) Aesthetic:** The group of reservoirs demonstrate a high level of engineering expertise and architectural detail, accommodating both structural requirements and aesthetic qualities, rare in NSW.
- The reservoir is a landmark in the surrounding area.
- e) Research:** This reservoir demonstrates the high level of technical expertise available to the MWS&DB for reservoir construction at the time.
- f) Rarity:** This reservoir is one of four riveted steel elevated reservoirs on a steel girder stand with concrete surround in the SWC system, rarer still because of the high level of architectural detailing. The 'skid huts' are a rare survival.
- g) Representative:** The riveted steel tank was common technology for surface reservoirs, but was extremely rare when combined with an elevated steel frame with concrete apron.

Heritage Listings

List Name: Heritage Act - s.170 NSW State agency heritage register
Listing Name: Sydney Water Heritage Register
Date Listing Listed: 30-06-2002

List Name: Heritage Act - State Heritage Register
Listing Name: State Heritage Register
Item Reference Number: 01622
Date Listing Listed: 15-11-2002

Item Report

Ashfield Reservoir (Elevated) (WS 0003)

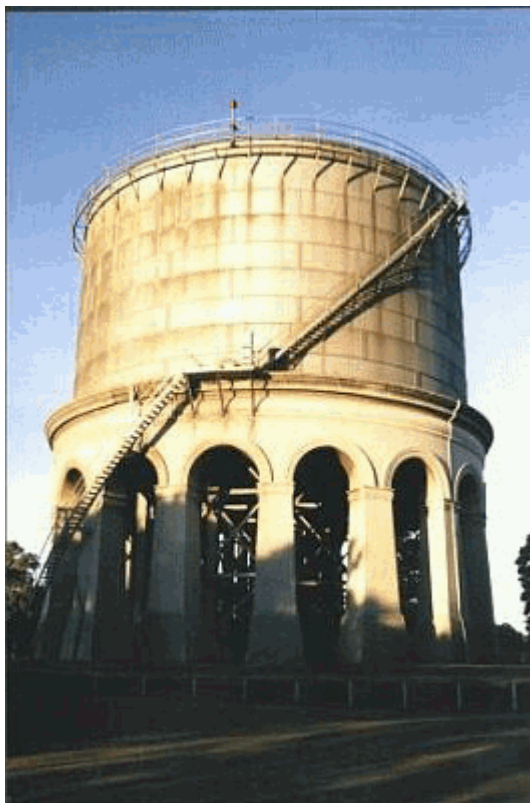


Image Caption: WS 3.
Creation Date: 01-07-2000
Created By: Edward Higginbotham
Copyright Holder: Edward Higginbotham



Image Caption: WS 3. Skid huts along south boundary of Depot.
Creation Date: 01-07-2000
Created By: Edward Higginbotham
Copyright Holder: Edward Higginbotham

Item Report

Ashfield Reservoir (Elevated) (WS 0003)



Image Caption: Location Plan
Creation Date: 01-01-1900
Created By: Edward Higginbotham

Item Report

Ashfield Reservoir (Elevated) (WS 0003)

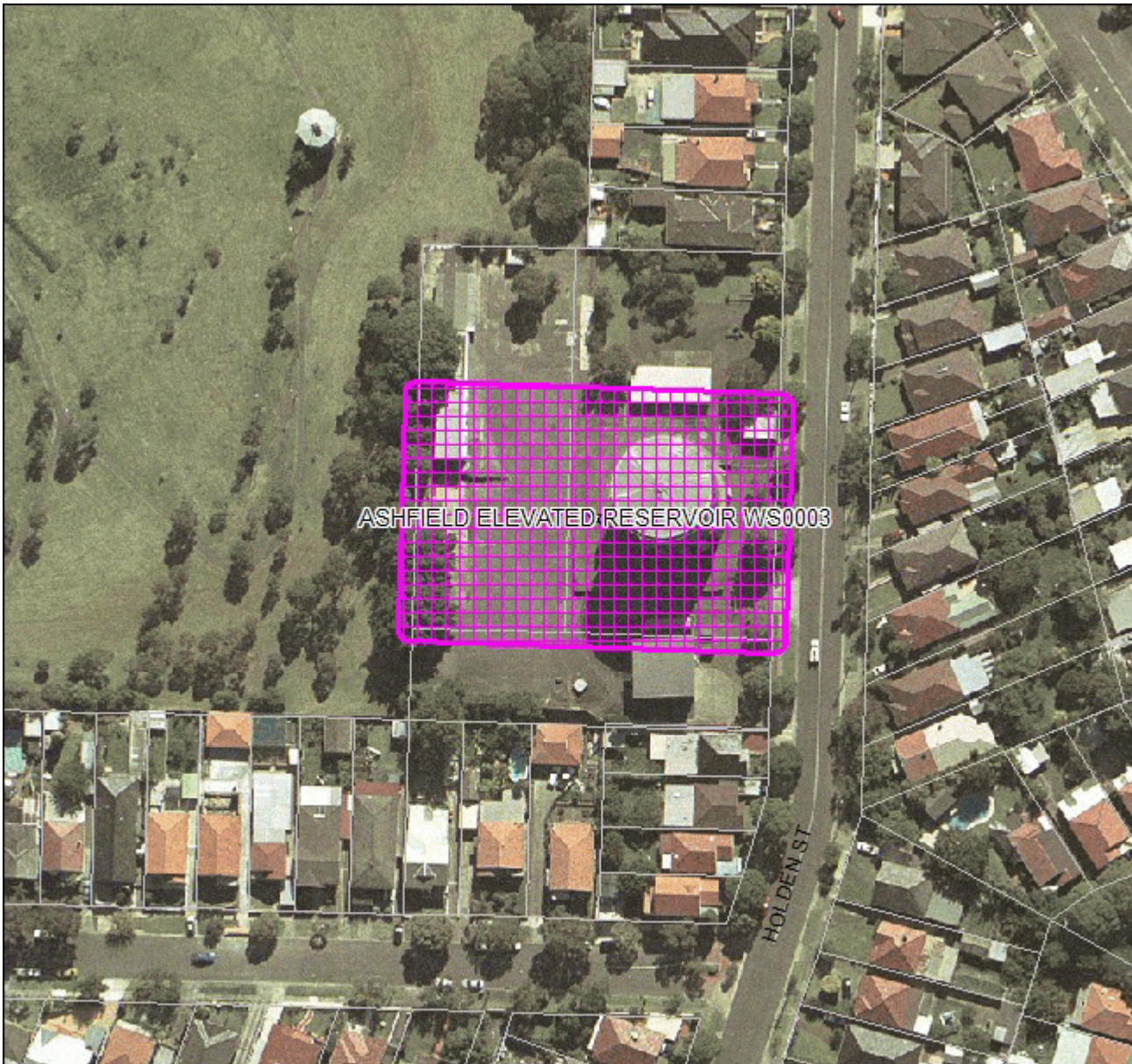


Image Caption: The physical curtilage plan for Ashfield Reservoir (Elevated) (WS0003).
Creation Date: 27-06-2006
Created By: SWC
Copyright Holder: SWC

Administration

Data Entry Status: Basic
Entered: 18-12-2000
Updated: 24-07-2006