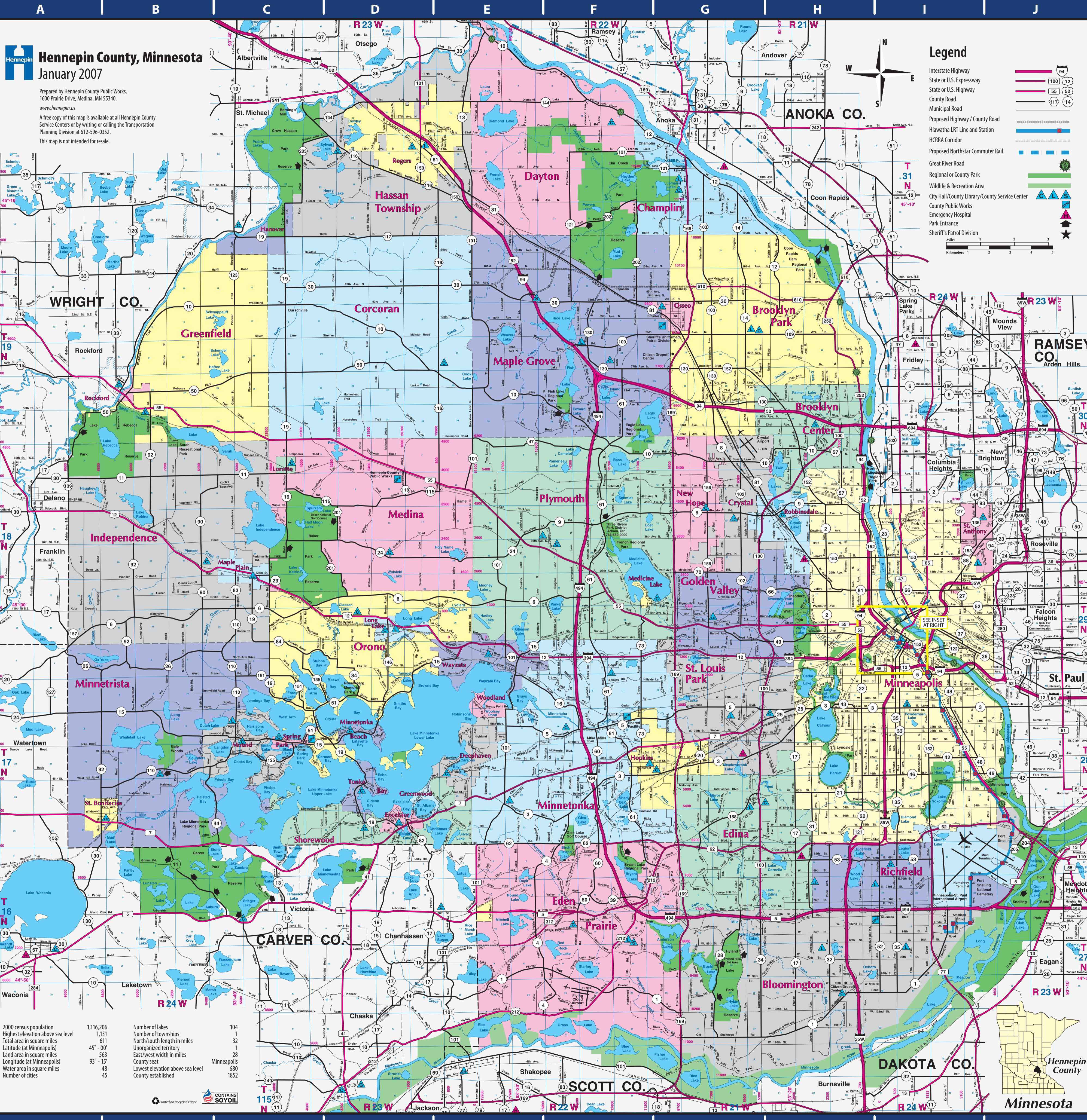


Hennepin County, Minnesota
January 2007

Prepared by Hennepin County Public Works,
1600 Prairie Drive, Medina, MN 55340.
www.hennepin.us
A free copy of this map is available at all Hennepin County
Service Centers or by writing or calling the Transportation
Planning Division at 612-596-0352.
This map is not intended for resale.



Legend

- Interstate Highway
- State or U.S. Expressway
- State or U.S. Highway
- County Road
- Municipal Road
- Proposed Highway / County Road
- Hiawatha LRT Line and Station
- HCRA Corridor
- Proposed Northstar Commuter Rail
- Great River Road
- Regional or County Park
- Wildlife & Recreation Area
- City Hall/County Library/County Service Center
- County Public Works
- Emergency Hospital
- Park Entrance
- Sheriff's Patrol Division

2000 census population	1,116,206	Number of lakes	104
Highest elevation above sea level	1,131	Number of townships	1
Total area in square miles	611	North/south length in miles	32
Latitude (at Minneapolis)	45° 00'	Unorganized territory	1
Land area in square miles	563	County seat	Minneapolis
Longitude (at Minneapolis)	93° 15'	Lowest elevation above sea level	680
Water area in square miles	48	County established	1852
Number of cities	45		



Hennepin County Service Centers

For general information call 612-348-8240.

- H4 Brookdale Service Center
- F9 Edin Prairie Service Center
- I6 Maple Grove Service Center
- F4 Plymouth Service Center
- I7 Ridgedale Service Center
- H8 Southdale Service Center

The newest Hennepin County Service Center is now open at the Midtown Exchange.

Hennepin County Libraries

H8 Augsburg Park, 952-847-5500	G3 Osseo, 952-847-5750
H4 Brookdale, 952-847-5600	I9 415 Central Ave.
C2 Champlin, 952-847-5350	H9 8801 Portland Ave. S., Bloomington
F9 Edin Prairie, 952-847-5375	H9 8800 Penn Ave. S., Bloomington
H8 Excelsior, 952-847-6050	F5 Plymouth, 952-847-5825
G6 Golden Valley, 952-847-5475	F6 12154 Ensign Ave. N.
F7 Hopkins, 952-847-5500	C5 Maple Grove, 952-847-8800
D6 Long Lake, 952-847-5525	F5 565 Prairie Center Dr.
F5 Maple Plain, 952-847-5700	C6 5280 Grandview Square
E8 Minnetonka, 952-847-5725	D2 343 3rd St.
	I5 830 Winnetka Ave. N.
	A7 22 11th Ave. N.
	G7 1865 Wayzata Blvd.
	H8 8551 Elm Creek Blvd.
	E6 5184 Main St. (City Hall)
	C7 620 Rice St. (City Hall)
	C7 Westonka, 952-847-6175
	C7 17524 Excelsior Blvd.

Hennepin County Municipalities

Index	Municipality	2005 Population*	Index	Municipality	2005 Population*	Index	Municipality	2005 Population*
H9	Bloomington	84,347	F7	Hopkins	17,263	H5	Robbinsdale	13,875
H4	Brooklyn Center	28,137	B6	Independence	5,714	B4	Rockford (part)	337
G4	Brooklyn Park	71,048	D6	Long Lake	1,839	D2	Rogers	6,716
C2	Champlin	24,071	C5	Loretto	637	I5	Saint Anthony (part)	5,414
E9	Chanhassen	0	E3	Maple Grove	58,420	A8	Saint Bonifacius	2,377
C3	Corcoran	5,884	C6	Maple Plain	1,982	C7	Saint Louis Park	44,380
G5	Crystal	22,595	F6	Medicine Lake	359	D8	Shorewood	7,551
E2	Dayton	5,007	D5	Medina	4,770	C7	Spring Park	1,705
E7	Deephaven	3,131	H6	Minnetonka	387,711	D8	Tonka Bay	1,545
E9	Eden Prairie	60,955	F7	Minnetonka	51,657	E6	Wayzata	3,973
G8	Edina	47,448	D5	Minnetonka Beach	625	E7	Woodland	528
D8	Excelsior	2,580	B7	Minnetrista	5,542		Total	1,150,912
H8	Fort Snelling**	162	C7	Mound	9,838			
D4	Golden Valley	20,510	C5	New Hope	20,747			
B6	Greenfield	2,847	D7	Orono	7,653			
D7	Greenwood	759	G3	Osseo	2,492			
C5	Hanover (part)	507	F6	Plymouth	70,455			
D2	Hassan Township	2,648	H8	Richfield	35,667			

Hennepin County Government

The Hennepin County Board of Commissioners is the governing body of Hennepin County.

Board of Commissioners

- Mike Opat, 1st District
- Mark Stenglein, 2nd District
- Gail Dorfman, 3rd District
- Peter McLaughlin, 4th District
- Randy Johnson, 5th District
- Linda Koblick, 6th District
- Penny Steele, 7th District

