

Yampi Sound

Home

About Us

Site Map

Kimberley Cruises

Kimberley Rivers

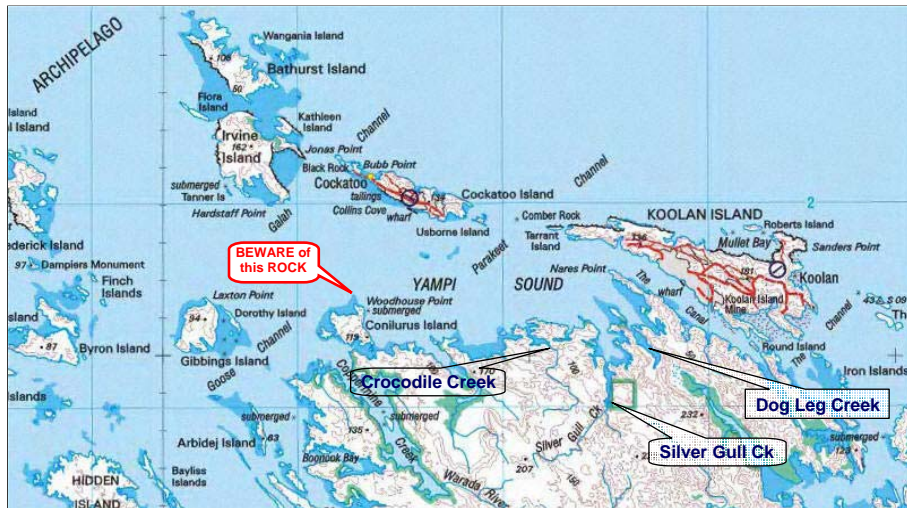
Short Expeditions

Special Places

Kimberley History

Local Information

Links & Books



THE SIGHTS OF YAMPI SOUND

YAMPI SOUND AIR PHOTO

From Dampier's Monument in the west, through Koolan and Cockatoo Islands along the northern fringe, to the Iron Islands in the east, Yampi Sound holds some of the highest grade iron ore deposits in the world. These deposits have been mined since the 1950's. A copper mine was operated in [Coppermine Creek](#) at approximate location 16° 14.15' S, 123° 37.20' E. An aboriginal mission was established in the early 1950's about 2 miles south east of the head of Coppermine Creek at approximate location 16° 14.45' S, 123° 38.55' E. An old road leads to the mission from the remains of a stone jetty in Coppermine Creek at approx. location 16° 13.7' S, 123° 37.9' E. The mission was abandoned in 1952 and moved to Mowanjum, south of Derby.



The southern fringe of Yampi Sound is indented with drying inlets, such as Crocodile Creek (left), Silvergull Creek (right) and Dog Leg Creek, the first two of which have perennial freshwater creeks cascading into pools then into the sea. All three creeks have resident crocodiles and plenty of tourists to choose from during the dry season.



Crocodile Creek is a favourite recreation location for charter boat guests and yachties alike. It is not uncommon to see the yachties donga draped with washing (left) while tourists duck under drying clothes to get to the swimming hole.



The high spring tides flow into the lower swimming hole (right) and it is not uncommon to see a small crocodile (2 to 2.5m long) cruising around beside the ladder.

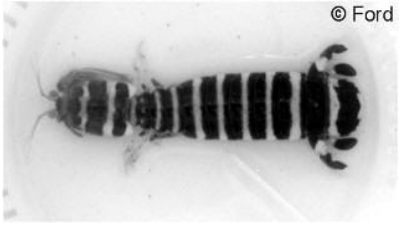


Silvergull Creek also boasts a "Boating Club" shelter where yachties are welcome to enjoy their BYO bar-b-q (left) before enjoying the view from the dunny (right) or having a swim in the tank. It is good form to leave a donation in the money box beside the shower after having a swim.



Sometimes it is difficult to resist the hospitality offered by Phil & Marion and the visitors book is a "must read". Just take up a bottle of wine or a slab of beer and you may not leave for a long time.

Right next door in Dog Leg Creek, Dean and Curley have set up a refuelling facility for yachties and charter boats with a small floating jetty accessible on the top half of the tide. All tide anchorage is available downstream of the barge mooring where the trailer sailer is shown.



© Ford

Two amazing sights have caught our attention in Yampi Sound. This [Air Photo link](#) and the photo (right) clearly show these strange shaped rocks located a mile or so south of Dampier's Monument. They look like a cluster of cannon from a distance to the east. This Mantis Shrimp



(above), otherwise known as a 'prawn killer' was caught and released in the anchorage at Silver Gull Creek.



On Friday 20 August 2004 Phil and Marion were married by the undertaker/celebrant from Derby. On the same day, Marion's daughter, Jarla, announced her engagement to Curley (right) from Dog Leg Creek.

The pic (left) was snapped at the wedding ceremony and shows (from left to right) Warren Arms who had just given the bride away, Jarla, Marion and Phil (black undies).



[Enjoy your stay in Yampi Sound.](#)

[Home](#) | [Up](#) | [Art Sites](#) | [Rainforest Ravine](#) | [Langgi](#) | [Talbot Bay](#) | [Dugong Bay](#) | [Yampi Sound](#) | [King Sound](#)

This page was last updated 10 February, 2007 - [download Yampi Sound.pdf](#)