

# HISTORY

## IN THIS SECTION...

130	.....All-Time NCAA Tourney Results
131	.....NCAA Games in the State of Connecticut
132	.....Individual NCAA Tournament Records
133	.....Team NCAA Tournament Records
134	.....UConn's BIG EAST History
135	.....BIG EAST Honor Roll
136	.....UConn in the BIG EAST Tournament
137-138	.....All-Time BIG EAST Tournament Results
139-146	.....All-Time Letterwinners
147-151	.....Where Are They Now?
152-153	.....All-Time Uniform Numbers
154-155	.....State-by-State Roster
156	.....Harry A. Gampel Pavilion
157	.....Gampel Pavilion Highs/Lows
158	.....XL Center
159	.....Home Postseason Success
160	.....2007-08 Award Winners

**Junior  
Kalana  
Greene**

# CONNECTICUT HUSKIES

>> 2008-09 Women's Basketball



# ALL-TIME NCAA TOURNAMENT RESULTS



PREVIEW

COACHES

THE HUSKIES

REVIEW

RECORDS

HONORS

HISTORY

ALL-TIME RESULTS

UConn

YEAR	OPPONENT	ROUND	SITE/DATE	SCORE	W/L
1989	La Salle#	First	Hugh S. Greer, Field House, Storrs, Conn. (March 15)	63-72	L
1990	Clemson#	Second	Harry A. Gampel Pavilion, Storrs, Conn. (March 17)	59-61	L
1991	Toledo#	Second	Harry A. Gampel Pavilion, Storrs, Conn. (March 16)	81-80	W
	NC State#	Final 16	The Palestra, Philadelphia, Pa. (March 21)	82-71	W
	Clemson#	Final Eight	The Palestra, Philadelphia, Pa. (March 23)	60-57	W
	Virginia	Final Four	Lakefront Arena, New Orleans, La. (March 30)	55-61	L
1992	St. Peter's (NJ)#	First	Harry A. Gampel Pavilion, Storrs, Conn. (March 18)	83-66	W
	Vanderbilt#	Second	Memorial Coliseum, Nashville, Tenn. (March 21)	47-75	L
1993	Louisville*	First	Harry A. Gampel Pavilion, Storrs, Conn. (March 18)	71-74	L
1994	Brown#	First	Harry A. Gampel Pavilion, Storrs, Conn. (March 16)	79-60	W
	Auburn#	Second	Harry A. Gampel Pavilion, Storrs, Conn. (March 20)	81-59	W
	Southern Miss#	Final 16	Louis Brown Arena, Piscataway, N.J. (March 24)	78-64	W
	North Carolina#	Final Eight	Louis Brown Arena, Piscataway, N.J. (March 26)	69-81	L
1995	Maine#	First	Harry A. Gampel Pavilion, Storrs, Conn. (March 16)	105-75	W
	Virginia Tech#	Second	Harry A. Gampel Pavilion, Storrs, Conn. (March 18)	91-45	W
	Alabama#	Final 16	Harry A. Gampel Pavilion, Storrs, Conn. (March 23)	87-56	W
	Virginia#	Final Eight	Harry A. Gampel Pavilion, Storrs, Conn. (March 25)	67-63	W
	Stanford	Final Four	Target Center, Minneapolis, Minn. (April 1)	87-60	W
1996	Tennessee	Championship	Target Center, Minneapolis, Minn. (April 2)	70-64	W
	Howard*	First	Harry A. Gampel Pavilion, Storrs, Conn. (March 16)	94-63	W
1997	Michigan State*	Second	Harry A. Gampel Pavilion, Storrs, Conn. (March 18)	88-68	W
	San Francisco*	Final 16	Rosemont Horizon, Rosemont, Ill. (March 23)	72-44	W
	Vanderbilt*	Final Eight	Rosemont Horizon, Rosemont, Ill. (March 25)	67-57	W
	Tennessee	Final Four	Charlotte Coliseum, Charlotte, N.C. (March 29)	83-88 (ot)	L
	Lehigh+	First	Harry A. Gampel Pavilion, Storrs, Conn. (March 15)	103-35	W
1998	Iowa+	Second	Harry A. Gampel Pavilion, Storrs, Conn. (March 17)	72-53	W
	Illinois+	Final 16	Carver-Hawkeye Arena, Iowa City, Iowa (March 22)	78-73	W
	Tennessee+	Final Eight	Carver-Hawkeye Arena, Iowa City, Iowa (March 24)	81-91	L
1999	Fairfield#	First	Harry A. Gampel Pavilion, Storrs, Conn. (March 13)	93-52	W
	George Washington#	Second	Harry A. Gampel Pavilion, Storrs, Conn. (March 15)	75-67	W
	Arizona#	Final 16	University of Dayton Arena, Dayton, Ohio (March 21)	74-57	W
	NC State#	Final Eight	University of Dayton Arena, Dayton, Ohio (March 23)	52-60	L
2000	St. Francis (PA)*	First	Harry A. Gampel Pavilion, Storrs, Conn. (March 12)	97-46	W
	Xavier*	Second	Harry A. Gampel Pavilion, Storrs, Conn. (March 14)	86-84	W
	Iowa State*	Final 16	Shoemaker Center, Cincinnati, Ohio (March 20)	58-64	L
2001	Hampton#	First	Harry A. Gampel Pavilion, Storrs, Conn. (March 17)	116-45	W
	Clemson#	Second	Harry A. Gampel Pavilion, Storrs, Conn. (March 19)	83-45	W
	Oklahoma#	Final 16	ALLTEL Pavilion, Richmond, Va. (March 25)	102-80	W
	LSU#	Final Eight	ALLTEL Pavilion, Richmond, Va. (March 27)	86-71	W
	Penn State	Final Four	First Union Center, Philadelphia, Pa. (March 31)	89-67	W
2002	Tennessee	Championship	First Union Center, Philadelphia, Pa. (April 2)	71-52	W
	Long Island U.#	First	Harry A. Gampel Pavilion, Storrs, Conn. (March 17)	101-29	W
	Colorado St.#	Second	Harry A. Gampel Pavilion, Storrs, Conn. (March 19)	89-44	W
	NC State#	Final 16	Mellon Arena, Pittsburgh, Pa. (March 24)	72-58	W
	LaTech#	Final Eight	Mellon Arena, Pittsburgh, Pa. (March 26)	67-48	W
2003	Notre Dame	Final Four	Savvis Center, St. Louis, Mo. (March 30)	75-90	L
	St. Francis (PA)*	First	Harry A. Gampel Pavilion, Storrs, Conn. (March 16)	86-37	W
	Iowa*	Second	Harry A. Gampel Pavilion, Storrs, Conn. (March 18)	86-48	W
	Penn State*	Final 16	U.S. Cellular Arena, Milwaukee, Wis. (March 23)	82-64	W
	Old Dominion*	Final Eight	U.S. Cellular Arena, Milwaukee, Wis. (March 25)	85-64	W
2004	Tennessee	Final Four	Alamodome, San Antonio, Texas (March 29)	79-56	W
	Oklahoma	Championship	Alamodome, San Antonio, Texas (March 31)	82-70	W
	Boston University#	First	Harry A. Gampel Pavilion, Storrs, Conn. (March 23)	91-44	W
	TCU#	Second	Harry A. Gampel Pavilion, Storrs, Conn. (March 25)	81-66	W
	Boston College#	Final 16	University of Dayton Arena, Dayton, Ohio (March 30)	70-49	W
2005	Purdue#	Final Eight	University of Dayton Arena, Dayton, Ohio (April 1)	73-64	W
	Texas	Final Four	Georgia Dome, Atlanta, Ga. (April 6)	71-69	W
	Tennessee	Championship	Georgia Dome, Atlanta, Ga. (April 8)	73-68	W
	Pennsylvania#	First	The Arena at Harbor Yard, Bridgeport, Conn. (March 21)	91-55	W
	Auburn#	Second	The Arena at Harbor Yard, Bridgeport, Conn. (March 23)	79-53	W
2006	UCSB#	Final 16	Hartford Civic Center, Hartford, Conn. (March 27)	63-55	W
	Penn State#	Final Eight	Hartford Civic Center, Hartford Conn. (March 29)	66-49	W
	Minnesota	Final Four	New Orleans Sports Arena, New Orleans, La. (April 4)	67-58	W
	Tennessee	Championship	New Orleans Sports Arena, New Orleans, La. (April 6)	70-61	W
	Dartmouth^	First	Harry A. Gampel Pavilion, Storrs, Conn. (March 20)	95-47	W
2007	Florida State^	Second	Harry A. Gampel Pavilion, Storrs, Conn. (March 22)	70-52	W
	Stanford^	Final 16	Municipal Auditorium, Kansas City, Mo. (March 27)	59-76	L
	Coppin State\$	First	Bryce Jordan Center, State College, Pa. (March 19)	77-54	W
2008	Virginia Tech\$	Second	Bryce Jordan Center, State College, Pa. (March 21)	79-56	W
	Georgia\$	Final 16	The Arena at Harbor Yard, Bridgeport, Conn. (March 26)	77-75	W
	Duke\$	Final Eight	The Arena at Harbor Yard, Bridgeport, Conn. (March 28)	61-63 (ot)	L
	UMBC!	First	Hartford Civic Center (Hartford, Conn.) (March 18)	82-33	W
2009	UW-Green Bay!	Second	Hartford Civic Center (Hartford, Conn.) (March 20)	94-70	W
	North Carolina State!	Final 16	Save Mart Center (Fresno, Calif.) (March 24)	78-71	W
	LSU!	Final Eight	Save Mart Center (Fresno, Calif.) (March 26)	50-73	L
	Cornell%	First	The Arena at Harbor Yard (Bridgeport, Conn.) (March 23)	89-47	W
	Texas%	Second	The Arena at Harbor Yard (Bridgeport, Conn.) (March 24)	89-55	W
2010	Old Dominion	Final 16	Greensboro Coliseum (Greensboro, N.C.) (March 30)	78-63	W
	Rutgers	Final Eight	Greensboro Coliseum (Greensboro, N.C.) (April 1)	66-56	W
	Stanford	Final Four	St. Pete Times Forum (Tampa, Fla.) (April 6)	73-82	L

CONNECTICUT ALL-TIME NCAA OVERALL TOURNAMENT RECORD: 65-15 (.813)

# - East Region; \* - Mid-east Region; + - Midwest Region; ^ - Kansas City Region; \$ - Bridgeport Region; ! - Fresno Region; % - Greensboro Region

This is UConn... In 2004, Campaign UConn, the largest private fundraising effort ever conducted by a private university in New England, was completed.



YEAR	OPPONENT	ROUND	SITE/DATE	SCORE	W/L
1989	La Salle	First	Hugh S. Greer Field House, Storrs, Conn. (March 15)	72-63	L
1990	Clemson	Second	Harry A. Gampel Pavilion, Storrs, Conn. (March 17)	61-59	L
1991	Toledo	Second	Harry A. Gampel Pavilion, Storrs, Conn. (March 16)	81-80	W
1992	St. Peter's (NJ)	First	Harry A. Gampel Pavilion, Storrs, Conn. (March 18)	83-66	W
1993	Louisville	First	Harry A. Gampel Pavilion, Storrs, Conn. (March 18)	74-71	L
1994	Brown	First	Harry A. Gampel Pavilion, Storrs, Conn. (March 16)	79-60	W
	Auburn	Second	Harry A. Gampel Pavilion, Storrs, Conn. (March 20)	81-59	W
1995	<b>Maine</b>	<b>First</b>	<b>Harry A. Gampel Pavilion, Storrs, Conn. (March 16)</b>	<b>105-75</b>	<b>W</b>
	<b>Virginia Tech</b>	<b>Second</b>	<b>Harry A. Gampel Pavilion, Storrs, Conn. (March 18)</b>	<b>91-45</b>	<b>W</b>
	<b>Alabama</b>	<b>Final 16</b>	<b>Harry A. Gampel Pavilion, Storrs, Conn. (March 23)</b>	<b>87-56</b>	<b>W</b>
	<b>Virginia</b>	<b>Final 8</b>	<b>Harry A. Gampel Pavilion, Storrs, Conn. (March 25)</b>	<b>67-63</b>	<b>W</b>
1996	Howard	First	Harry A. Gampel Pavilion, Storrs, Conn. (March 16)	94-63	W
	Michigan State	Second	Harry A. Gampel Pavilion, Storrs, Conn. (March 18)	88-68	W
1997	Lehigh	First	Harry A. Gampel Pavilion, Storrs, Conn. (March 15)	103-55	W
	Iowa	Second	Harry A. Gampel Pavilion, Storrs, Conn. (March 17)	72-53	W
1998	Fairfield	First	Harry A. Gampel Pavilion, Storrs, Conn. (March 13)	93-52	W
	G. Washington	Second	Harry A. Gampel Pavilion, Storrs, Conn. (March 15)	75-67	W
1999	St. Francis	First	Harry A. Gampel Pavilion, Storrs, Conn. (March 12)	97-46	W
	Xavier	Second	Harry A. Gampel Pavilion, Storrs, Conn. (March 14)	86-84	W
2000	<b>Hampton</b>	<b>First</b>	<b>Harry A. Gampel Pavilion, Storrs, Conn. (March 17)</b>	<b>116-45</b>	<b>W</b>
	<b>Clemson</b>	<b>Second</b>	<b>Harry A. Gampel Pavilion, Storrs, Conn. (March 19)</b>	<b>83-45</b>	<b>W</b>
2001	Long Island	First	Harry A. Gampel Pavilion, Storrs, Conn. (March 17)	101-29	W
	Colorado St.	Second	Harry A. Gampel Pavilion, Storrs, Conn. (March 19)	89-44	W
2002	<b>St. Francis (Pa.)</b>	<b>First</b>	<b>Harry A. Gampel Pavilion, Storrs, Conn. (March 16)</b>	<b>86-37</b>	<b>W</b>
	<b>Iowa</b>	<b>Second</b>	<b>Harry A. Gampel Pavilion, Storrs, Conn. (March 18)</b>	<b>86-48</b>	<b>W</b>
2003	<b>Boston Univ.</b>	<b>First</b>	<b>Harry A. Gampel Pavilion, Storrs, Conn. (March 23)</b>	<b>91-44</b>	<b>W</b>
	<b>TCU</b>	<b>Second</b>	<b>Harry A. Gampel Pavilion, Storrs, Conn. (March 25)</b>	<b>81-66</b>	<b>W</b>
2004	<b>Penn</b>	<b>First</b>	<b>Arena at Harbor Yard, Bridgeport, Conn. (March 21)</b>	<b>91-55</b>	<b>W</b>
	<b>Auburn</b>	<b>Second</b>	<b>Arena at Harbor Yard, Bridgeport, Conn. (March 23)</b>	<b>79-53</b>	<b>W</b>
	<b>Santa Barbara</b>	<b>Final 16</b>	<b>Hartford Civic Center, Hartford, Conn. (March 27)</b>	<b>63-55</b>	<b>W</b>
	<b>Penn State</b>	<b>Final 8</b>	<b>Hartford Civic Center, Hartford, Conn. (March 29)</b>	<b>66-49</b>	<b>W</b>
2005	Dartmouth	First	Harry A. Gampel Pavilion, Storrs, Conn. (March 20)	95-47	W
	Florida State	Second	Harry A. Gampel Pavilion, Storrs, Conn. (March 22)	70-52	W
2006	Georgia	Final 16	Arena at Harbor Yard, Bridgeport, Conn. (March 26)	95-47	W
	Duke	Final 8	Arena at Harbor Yard, Bridgeport, Conn. (March 28)	61-63 (ot)	L
2007	UMBC	First	Hartford Civic Center, Hartford, Conn. (March 18)	82-33	W
	UW-Green Bay	Second	Hartford Civic Center, Hartford, Conn. (March 20)	94-70	W
2008	Cornell	First	Arena at Harbor Yard, Bridgeport, Conn. (March 23)	89-47	W
	Texas	Second	Arena at Harbor Yard, Bridgeport, Conn. (March 25)	89-55	W

CONNECTICUT ALL-TIME RECORD IN NCAA TOURNAMENT GAMES PLAYED IN CONNECTICUT:

**35-4 (.897)**

**Bold - NCAA Championship Years**

PREVIEW  
COACHES  
THE HUSKIES  
REVIEW  
RECORDS  
HONORS  
HISTORY  
ALL-TIME RESULTS  
UConn



PREVIEW

COACHES

THE HUSKIES

REVIEW

RECORDS

HONORS

HISTORY

ALL-TIME RESULTS

UConn

# INDIVIDUAL PERFORMANCES - UCONN

## POINTS

39 .....Kerry Bascom (vs. Toledo, 3/16/91)  
35 .....Diana Taurasi (vs. TCU, 3/26/03)

## FIELD GOALS MADE

13 (13-20) .....Kerry Bascom (vs. Toledo, 3/16/91)

## FIELD GOALS ATTEMPTED

23 (11-23) .....Nykesha Sales (vs. Tennessee, 3/29/96)

## 3-Point FIELD GOALS MADE

6 (6-8) .....Diana Taurasi (vs. N.C. State, 3/24/01)  
6 (6-13) .....Ann Strother (vs. Va. Tech, 3/21/06)

## 3-POINT FIELD GOALS ATTEMPTED

13 .....Ann Strother (vs. Va. Tech, 3/21/06)  
12 .....Mel Thomas (vs. UW-Green Bay, 3/20/07)  
11 .....Renee Montgomery (vs. LSU, 3/26/07)  
11 .....Rita Williams (vs. NC State, 3/23/98)  
11 .....Sue Bird (vs. Notre Dame, 3/30/01)  
11 .....Diana Taurasi (vs. Notre Dame, 3/30/01)  
11 .....Diana Taurasi (vs. Texas, 4/6/03)

## FREE THROWS MADE

12 (12-14) .....Paige Sauer (vs. George Washington, 3/15/98)  
11 (11-12) .....Kalana Greene (vs. North Carolina St., 3/24/07)  
11 (11-13) .....Barbara Turner (vs. Coppin State, 3/19/06)

## FREE THROWS ATTEMPTED

14 .....Paige Sauer (vs. George Washington, 3/15/98)  
13 .....Barbara Turner (vs. Coppin State, 3/19/06)

## REBOUNDS

17 .....Kelly Schumacher (vs. Notre Dame, 3/30/01)  
16 .....Barbara Turner (vs. Va. Tech, 3/21/06)  
16 .....Swin Cash (vs. Long Island, 3/17/01)  
15 .....Paige Sauer (vs. Arizona, 3/21/98)  
15 .....Rebecca Lobo (vs. So. Mississippi, 3/24/94)  
15 .....Janelle Elliott (vs. Louisville, 3/17/93)

## ASSISTS

11 .....Sue Bird (vs. Old Dominion, 3/23/02)  
9 .....Diana Taurasi (vs. Pennsylvania, 3/21/04)  
9 .....Sue Bird (vs. Hampton, 3/17/00)  
9 .....Jennifer Rizzotti (vs. Tennessee, 3/29/96)

## STEALS

9 .....Nykesha Sales (vs. Lehigh, 3/15/97)

## BLOCKS

9 .....Kelly Schumacher (vs. Tennessee, 4/2/00)

# INDIVIDUAL PERFORMANCES - OPPONENT

## POINTS

30 .....Tonya Sampson (North Carolina, 3/26/94)  
28 .....Natalie Berglin (UW-Green Bay, 3/20/07)  
28 .....Roneeka Hodges (Florida State, 3/22/05)  
27 .....Tasha Humphrey (Georgia, 3/26/06)

## FIELD GOALS MADE

11 (11-16) .....Natalie Berglin (UW-Green Bay, 3/20/07)  
11 (11-21) .....Tonya Sampson (No. Carolina, 3/26/94)  
11 (11-22) .....Roneeka Hodges (Florida State, 3/22/05)

## FIELD GOALS ATTEMPTED

25 (6-25) .....Kim MacMillan (Long Island, 3/17/01)

## 3-POINT FIELD GOALS MADE

6 (6-9) .....Natalie Berglin (UW-Green Bay, 3/20/07)  
5 (5-8) .....April Brown (Louisiana State, 3/27/00)

## 3-POINT FIELD GOALS ATTEMPTED

11 (3-11) .....Katie Coleman (Illinois, 3/22/97)

## FREE THROWS MADE

11 (11-14) .....LaNeishea Caufield (Oklahoma, 3/25/00)  
11 (11-12) .....Sandora Irvin (TCU, 3/23/03)  
11 (11-12) .....Candice Wiggins (Stanford, 3/27/05)  
11 (11-12) .....Sherill Baker (Georgia, 3/26/06)

## FREE THROWS ATTEMPTED

14 (11-14) .....LaNeishea Caufield (Oklahoma, 3/25/00)

## REBOUNDS

14 .....Rhonda Mapp (N.C. State, 3/21/91)  
13 .....Allison Bales (Duke, 3/28/06)  
13 .....Candice Wiggins (4/6/08)

## ASSISTS

10 .....Kelly Greenberg (La Salle, 3/15/89)

## STEALS

6 .....Tonya Sampson (North Carolina, 3/26/94)

## BLOCKS

8 .....Allison Bales (Duke, 3/28/06)  
6 .....Sylvia Fowles (LSU, 3/36/07)  
5 .....Ruth Riley (Notre Dame, 3/30/01)

This is UConn... The UConn Club hosts such events as auctions, golf tournaments and dinners in an effort to raise money for scholarships.



# NCAA TOP TEAM PERFORMANCES

<b>UConn</b>	<b>OPPONENTS</b>
116 vs. Hampton, 2000	<b>Most Points</b> .....90 vs. Notre Dame, 2001
58 vs. Lehigh, 1997	<b>Most Rebounds</b> .....57 vs. Duke, 2006
.....	.....48 vs. Tennessee, 2002
32 vs. Dartmouth, 2005	<b>Most Assists</b> .....22 vs. Stanford, 1995
21 vs. Oklahoma, 2000	<b>Most Steals</b> .....13 vs. North Carolina, 1994
71.0% (44-62) vs. Hampton, 2000	<b>Best FG%</b> .....51.8% (29-56) vs. LSU, 2000
90.5% (19-21) vs. Rutgers, 2008	<b>Best FT%</b> .....94.4% (17-18) vs. Toledo, 1991
14 vs. Auburn, 2004	<b>Most 3-Point FG Made</b> .....10 vs. UW Green Bay, 2007
.....	.....9 vs. Toledo, 1991
.....	.....9 vs. Xavier, 1999
100% (3-3) vs. Illinois, 1997	<b>Best 3-Point FG%</b> .....72.3% (8-11) vs. Notre Dame, 2001
.....	.....70.0% (7-10) vs. LSU, 2007
72 (101-29) vs. Long Island, 2001	<b>Largest Margin of Victory</b> ....28 (75-47) vs. Vanderbilt, 1992

UConn's Overall NCAA Tournament Record: 65-15 (.813)

UConn's NCAA Neutral Site Record: 37-11 (.771)



GAMPEL PAVILION WILL SERVE AS THE HOST SITE FOR THE OPENING TWO ROUNDS OF THE 2009 NCAA TOURNAMENT. THE HUSKIES OWN AN ALL-TIME MARK OF 26-2 IN NCAA TOURNAMENT GAMES PLAYED ON THE FLOOR OF GAMPEL PAVILION, WITH THE LAST POSTSEASON ACTION COMING IN 2005.

PREVIEW  
 COACHES  
 THE HUSKIES  
 REVIEW  
 RECORDS  
 HONORS  
 HISTORY  
 ALL-TIME RESULTS  
 UCONN



# BIG EAST HISTORY



PREVIEW

COACHES

THE HUSKIES

REVIEW

RECORDS

HONORS

HISTORY

ALL-TIME RESULTS

UConn

YEAR	REGULAR SEASON			CONFERENCE TOURNAMENT				
	WON	LOST	FINISH	TOUR. OPPONENTS (SITE)	SCORE	WON	LOST	FINISH
1982-83	1	7	9th	Boston College (Providence)	57-69	0	1	First Round
1983-84	0	8	9th	Boston College (St. John's) Pittsburgh	52-51 57-60	1	1	Quarterfinals
1984-85	3	13	7th (tie)	Seton Hall (Syracuse)	73-87 (ot)	0	1	First Round
1985-86	4	12	7th	Villanova (Boston College)	47-68	0	1	Quarterfinals
1986-87	9	7	4th (tie)	St. John's (Villanova)	58-68	0	1	Quarterfinals
1987-88	9	7	5th	Boston College (Pittsburgh)	56-71	0	1	Quarterfinals
1988-89	13	2	1st	Georgetown (Seton Hall) Boston College Providence	85-73 65-45 84-65	3	0	1st-Champions
1989-90	14	2	1st (tie)	St. John's (Connecticut) Boston College Providence	71-58 72-51 61-82	2	1	2nd
1990-91	14	2	1st	Villanova (Georgetown) Seton Hall Providence	64-47 69-54 79-74	3	0	1st-Champions
1991-92	13	5	2nd (tie)	Pittsburgh (Connecticut) Georgetown Miami	86-50 82-64 47-56	2	1	2nd
1992-93	12	6	3rd	Seton Hall Providence	56-54 (ot) 87-73	1	1	3rd (tied)
1993-94	17	1	1st	St. John's (Connecticut) Providence Seton Hall	69-45 92-56 77-51	3	0	1st-Champions
1994-95	18	0	1st	Providence (Seton Hall) Pittsburgh Seton Hall	92-63 95-63 85-49	3	0	1st-Champions
1995-96	17	1	1st *	Rutgers (Connecticut) Pittsburgh Notre Dame	93-64 83-51 71-54	3	0	1st-Champions
1996-97	18	0	1st *	Villanova (Connecticut) Miami Notre Dame	63-45 98-71 86-77	3	0	1st-Champions
1997-98	17	1	1st*	West Virginia (Rutgers) Notre Dame Rutgers	84-82 73-53 67-58	3	0	1st-Champions
1998-99	17	1	1st (tie)	St. John's (Rutgers) Georgetown Notre Dame	82-58 77-42 96-75	3	0	1st-Champions
1999-2000	16	0	1st	St. John's (Connecticut) Boston College Rutgers	85-41 79-54 79-59	3	0	1st-Champions
2000-01	15	1	1st (tie)	Boston College (Connecticut) Rutgers Notre Dame	96-53 94-66 78-76	3	0	1st-Champions
2001-02	16	0	1st	Seton Hall (Rutgers) Villanova Boston College	78-48 83-39 96-54	3	0	1st-Champions
2002-03	16	0	1st	Seton Hall (Rutgers) Virginia Tech Villanova	70-47 71-54 48-52	2	1	2nd-Runner-Up
2003-04	14	2	1st	Virginia Tech (Hartford) Boston College	48-34 70-73	1	1	3rd (tied)
2004-05	13	3	2nd (tie)	Syracuse (Hartford) Notre Dame Rutgers	82-56 67-54 67-51	3	0	1st - Champions
2005-06	14	2	2nd	Notre Dame (Hartford) DePaul West Virginia	71-60 69-57 50-44	3	0	1st - Champions
2006-07	16	0	1st	South Florida (Hartford) Louisville Rutgers	74-54 76-50 47-55	2	1	2nd-Runner Up
2007-08	15	1	1st	DePaul (Hartford) Pittsburgh Louisville	86-67 74-47 65-59	3	0	1st - Champions
<b>TOTALS</b>	<b>331</b>	<b>84</b>	<b>(.798)</b>			<b>53</b>	<b>12</b>	<b>(.815)</b>

This is UConn... The Homer Babbage Library seats 2,300 people.



The UConn women's basketball program has produced numerous players who have dominated on both the conference and national levels.

Ten Huskies have been named BIG EAST Player of the Year over 14 different seasons.

Leading the way was Kerry Bascom, who was honored as the BIG EAST's top player in 1989, 1990 and 1991. UConn standout Rebecca Lobo was honored with the award twice in 1994 and 1995. Olympic gold medal winner Diana Taurasi was honored in both 2003 and 2004.

Most recently, in 2008, Maya Moore became the first freshman (male or female) to be recognized as the BIG EAST Player of the Year.

Jennifer Rizzotti, Kara Wolters, Nykesha Sales, Svetlana Abrosimova, Shea Ralph and Sue Bird have also been named BIG EAST Player of the Year.

The Huskies have also received many other individual awards. Nykesha Sales was a two-time BIG EAST Defensive Player of the Year. Sales was honored with the title in its inaugural year (1997) and again in 1998. Ashley Battle also earned the honor in 2003 for the Huskies.

Mel Thomas became the first UConn player to be named the league's Most Improved Player in 2006, while Renee Montgomery, Tina Charles and Maya Moore were each named BIG EAST Freshman of the Year in 2006, 2007 and 2008, respectively - the eighth, ninth and 10th Huskies to earn the honor.

UConn players have also garnered 78 BIG EAST Player of the Week honors, led by Rebecca Lobo with a BIG EAST record 12 career honors. Nykesha Sales holds the league single-season title with seven in the 1997-98 season. UConn has also had 80 Freshman/Rookie of the Week awards dating back to the 1982-83 season, including a league-record 10 by Maya Moore in 2007-08.



## BIG EAST PLAYER OF THE YEAR

2008	MAYA MOORE (UCONN)
2007	Angel McCoughtry (Louisville)
2006	Cappie Pondexter (Rutgers)
2005	Jacqueline Batteast (Notre Dame)
2004	DIANA TAURASI (UCONN)
2003	DIANA TAURASI (UCONN)
2002	SUE BIRD (UCONN)
2001	Ruth Riley (Notre Dame)
2000	SHEA RALPH (UCONN)
1999	SVETLANA ABROSIMOVA (UCONN)
1998	NYKESHA SALES (UCONN)
1997	KARA WOLTERS (UCONN)
1996	JENNIFER RIZZOTTI (UCONN)
1995	REBECCA LOBO (UCONN)
1994	REBECCA LOBO (UCONN)
1993	Kris Witfill (Georgetown)
1992	Frances Savage (Miami)
1991	KERRY BASCOM (UCONN)
1990	KERRY BASCOM (UCONN)
1989	KERRY BASCOM (UCONN)
1988	Lisa Angelotti (Villanova)
1987	Shelly Pennefather (Villanova)
1986	Shelly Pennefather (Villanova)
1985	Shelly Pennefather (Villanova)
1984	Jennifer Bruce (Pittsburgh)
	Kathy Finn (Providence)
1983	Debbie Beckford (St. John's)

## BIG EAST DEFENSIVE PLAYER OF THE YEAR

2008	Essence Carson (Rutgers)
2007	Essence Carson (Rutgers)
2006	Essence Carson (Rutgers)
2005	Chelsea Newton (Rutgers)
2004	Rebekkah Brunson (Georgetown)
2003	ASHLEY BATTLE (UCONN)
2002	Meghan Saake (Miami)
2001	Ruth Riley (Notre Dame)
2000	Ruth Riley (Notre Dame)
1999	Ruth Riley (Notre Dame)
1998	NYKESHA SALES (UCONN)
1997	NYKESHA SALES (UCONN)

## BIG EAST SIXTH MAN OF THE YEAR

2008	KETIA SWANIER (UCONN)
------	-----------------------



The Huskies celebrate after capturing the 2008 BIG EAST Tournament Championship.

## BIG EAST ROOKIE OF THE YEAR

2008	MAYA MOORE (UCONN)
2007	TINA CHARLES (UCONN)
2006	RENEE MONTGOMERY (UCONN)
2005	Matee Ajavon (Rutgers)
2004	Meg Bulger (West Virginia)
2003	Cappie Pondexter (Rutgers)
2002	Jaqueline Batteast (Notre Dame)
2001	Rebekkah Brunson (Georgetown)
2000	Alicia Ratay (Notre Dame)
1999	TAMIKA WILLIAMS (UCONN)
1998	Natasha Pointer (Rutgers)
1997	SHEA RALPH (UCONN)
1996	Kimberly Smith (Georgetown)
1995	NYKESHA SALES (UCONN)
1994	Holly Porter (Boston College)
1993	JENNIFER RIZZOTTI (UCONN)
	Holly Rilinger (Miami)
1992	REBECCA LOBO (UCONN)
1991	Jonna Huemrich (Pittsburgh)
1990	Sarah Behn (Boston College)
1989	Tracy Lis (Providence)
1988	LAURA LISHNESS (UCONN)
1987	KRIS LAMB (UCONN)
1986	Geraldine Sintilus (Seton Hall)
1985	Felisha Legette (Syracuse)
1984	Shelly Pennefather (Villanova)
1983	AnneMarie McNamee (St. John's)

## BIG EAST COACH OF THE YEAR

2008	GENO AURIEMMA (UCONN)
	Quentin Hillsman (Syracuse)
2007	Terri Mitchell (Marquette)
2006	Kim Barnes Arico (St. John's)
2005	C. Vivian Stringer (Rutgers)
2004	Mike Carey (West Virginia)
2003	GENO AURIEMMA (UCONN)
2002	GENO AURIEMMA (UCONN)
2001	Muffet McGraw (Notre Dame)
2000	GENO AURIEMMA (UCONN)
	Traci Waites (Pittsburgh)
1999	Cathy Inglesse (Boston College)
1998	C. Vivian Stringer (Rutgers)
1997	GENO AURIEMMA (UCONN)
1996	Harry Perretta (Villanova)
1995	GENO AURIEMMA (UCONN)
1994	Phyllis Mangina (Seton Hall)
1993	Patrick Knapp (Georgetown)
1992	Ferne Labati (Miami)
1991	Joe Mullaney, Jr. (St. John's)
1990	Phyllis Mangina (Seton Hall)
1989	GENO AURIEMMA (UCONN)
1988	Barbara Jacobs (Syracuse)
1987	Harry Perretta (Villanova)
1986	Bob Foley (Providence)
1985	Margo Plotzke (Boston College)
1984	Judy Saurer (Pittsburgh)
1983	Don Perrelli (St. John's)

## BIG EAST MOST IMPROVED PLAYER

2008	Epiphany Prince (Rutgers)
2007	Shavonte Zellous (Pittsburgh)
2006	MEL THOMAS (UCONN)



## BIG EAST TOURNAMENT CHAMPIONS

1989 1991 1994 1995 1996 1997 1998 1999 2000 2001 2002 2005 2006 2008



### UConn's Award Winners

#### In the Big East Tournament

##### Most Outstanding Player

- 2008 - Charde Houston
- 2006 - Ann Strother
- 2005 - Barbara Turner
- 2002 - Asjha Jones
- 2001 - Diana Taurasi
- 2000 - Tamika Williams
- 1999 - Shea Ralph
- 1998 - Rita Williams
- 1997 - Nykesha Sales
- 1996 - Kara Wolters
- 1995 - Kara Wolters
- 1994 - Rebecca Lobo
- 1991 - Meghan Pattyson
- 1989 - Kerry Bascom

##### All-Tournament Team

- 2008 - Renee Montgomery, Charde Houston, Tina Charles
- 2007 - Renee Montgomery, Charde Houston, Kalana Greene
- 2006 - Renee Montgomery, Ann Strother, Barbara Turner
- 2005 - Jessica Moore, Ann Strother, Barbara Turner
- 2003 - Diana Taurasi, Jessica Moore
- 2002 - Sue Bird, Swin Cash, Diana Taurasi, Tamika Williams
- 2001 - Shea Ralph, Asjha Jones
- 2000 - Svetlana Abrosimova, Swin Cash
- 1999 - Svetlana Abrosimova, Asjha Jones
- 1998 - Svetlana Abrosimova, Amy Duran
- 1997 - Carla Berube, Kara Wolters
- 1996 - Jen Rizzotti, Nykesha Sales
- 1995 - Rebecca Lobo, Nykesha Sales
- 1994 - Janelle Elliott, Kara Wolters
- 1993 - Rebecca Lobo
- 1992 - Kathy Ferrier, Pam Webber
- 1991 - Kerry Bascom
- 1990 - Kerry Bascom, Laura Lishness
- 1989 - Kris Lamb

### UConn Dominates the Conference

The Huskies have won 30 BIG EAST titles, including 14 tournament championships. No other team has won more than three tournament titles.

In those tournaments, UConn has earned 41 All-Tournament selections and garnered the Most Outstanding Player award 14 times.



#### BIG EAST TOURNAMENT CHAMPIONSHIPS WON

UConn	14	(1989, 1991, 1994-2002, 2005, 2006, 2008)
St. John's	3	(1983, 1984, 1988)
Villanova	3	(1986, 1987, 2003)
Miami	2	(1992, 1993)
Boston Coll.	1	(2004)
Providence	1	(1990)
Rutgers	1	(2007)
Syracuse	1	(1985)



#### All-Time Records in BIG EAST Tourney

	W	L	PCT.
Connecticut	53	12	.815
Louisville	5	3	.625
Rutgers	18	12	.600
Miami	14	11	.560
Villanova	25	22	.532
Notre Dame	13	13	.500
DePaul	3	3	.500
Providence	19	20	.487
Boston College	19	22	.463
St. John's	17	21	.447
Virginia Tech	3	4	.429
West Virginia	9	12	.429
South Florida	2	3	.400
Seton Hall	15	23	.395
Pittsburgh	13	22	.371
Syracuse	11	22	.333
Georgetown	11	23	.324
Marquette	1	3	.250
Cincinnati	0	2	.000



UConn's Charde Houston was named the Most Outstanding Player of the 2008 BIG EAST Tournament

#### Most championship game appearances CONNECTICUT:

18  
(1989-1992 & 1994-2003, 2005-08)

#### Most consecutive tournament games won CONNECTICUT:

29  
(1994-2003)

#### Most consecutive championship game appearances

CONNECTICUT:  
10 (1994-2003)

#### Most consecutive championships won CONNECTICUT:

9  
(1994-2002)

This is UConn... UConn's Oak Leaf logo was introduced in 1998.

PREVIEW

COACHES

THE HUSKIES

REVIEW

RECORDS

HONORS

HISTORY

ALL-TIME RESULTS

UConn





## 1989

### Walsh Gymnasium • Seton Hall University

#### First Round

No. 8 Georgetown 61, No. 9 Pittsburgh 57

#### Quarterfinals

No. 3 Providence 71, No. 6 Syracuse 59  
No. 2 Villanova 82, No. 7 St. John's 78 (3ot)  
No. 4 Boston College 70, No. 5 Seton Hall 59  
No. 1 Connecticut 85, No. 8 Georgetown 73

#### Semifinals

No. 3 Providence 68, No. 2 Villanova 64  
No. 1 Connecticut 65, No. 4 Boston College 45

#### Championship

No. 1 Connecticut 84, No. 3 Providence 65

## 1990

### Gampel Pavilion • University of Connecticut

#### First Round

No. 8 St. John's 64, No. 9 Villanova 58

#### Quarterfinals

No. 6 Pittsburgh 84, No. 3 Seton Hall 77  
No. 2 Providence 96, No. 7 Georgetown 71  
No. 1 Connecticut 71, No. 8 St. John's 58  
No. 4 Boston College 63, No. 5 Syracuse 60

#### Semifinals

No. 2 Providence 89, No. 6 Pittsburgh 88  
No. 1 Connecticut 72, No. 4 Boston College 51

#### Championship

No. 2 Providence 82, No. 1 Connecticut 61

## 1991

### McDonough Arena • Georgetown University

#### First Round

No. 8 Villanova 57, No. 9 Syracuse 41

#### Quarterfinals

No. 5 Seton Hall 64, No. 4 St. John's 59  
No. 1 Connecticut 64, No. 8 Villanova 47  
No. 2 Providence 95, No. 7 Georgetown 91  
No. 3 Pittsburgh 82, No. 6 Boston College 78

#### Semifinals

No. 1 Connecticut 69, No. 5 Seton Hall 54  
No. 2 Providence 107, No. 3 Pittsburgh 92

#### Championship

No. 1 Connecticut 79, No. 2 Providence 74

## 1992

### Gampel Pavilion • University of Connecticut

#### First Round

No. 7 Pittsburgh 70, No. 10 Boston College 59  
No. 9 Seton Hall, No. 8 Syracuse 58

#### Quarterfinals

No. 3 Georgetown 72, No. 6 Villanova 56  
No. 2 Connecticut 86, No. 7 Pittsburgh 50  
No. 4 Providence 67, No. 5 St. John's 66  
No. 1 Miami 76, No. 9 Seton Hall 62

#### Semifinals

No. 2 Connecticut 82, No. 3 Georgetown 64  
No. 1 Miami 82, No. 4 Providence 70

#### Championship

No. 1 Miami 56, No. 2 Connecticut 47

## 1993

### Alumni Hall • Providence College

#### First Round

No. 7 Providence 81, No. 10 Boston College 71  
No. 8 St. John's 67, No. 9 Syracuse 50

#### Quarterfinals

No. 3 Connecticut 56, No. 6 Seton Hall 54 (ot)  
No. 7 Providence 82, No. 2 Georgetown 81  
No. 5 Villanova 74, No. 4 Pittsburgh 59  
No. 1 Miami 84, No. 8 St. John's 61

#### Semifinals

No. 7 Providence 87, No. 3 Connecticut 73  
No. 1 Miami 84, No. 8 St. John's 61

#### Championship

No. 1 Miami 77, No. 7 Providence 56

## 1994

### Gampel Pavilion • University of Connecticut

#### First Round

No. 10 Syracuse 62, No. 7 Villanova 57  
No. 9 St. John's 73, No. 8 Georgetown 70 (ot)

#### Quarterfinals

No. 3 Pittsburgh 70, No. 6 Miami 90  
No. 2 Seton Hall 53, No. 10 Syracuse 41  
No. 4 Providence 96, No. 5 Boston College 86 (ot)  
No. 1 Connecticut 69, No. 9 St. John's 45

#### Semifinals

No. 2 Seton Hall 66, No. 3 Pittsburgh 54  
No. 1 Connecticut 92, No. 4 Providence 56

#### Championship

No. 1 Connecticut 77, No. 2 Seton Hall 51

## 1995

### Walsh Gymnasium • Seton Hall

#### First Round

No. 7 Georgetown 84, No. 10 Boston College 60  
No. 9 Providence 80, No. 8 Syracuse 66

#### Quarterfinals

No. 3 Seton Hall 66, No. 6 Miami 50  
No. 2 Villanova 73, No. 7 Georgetown 65  
No. 1 Connecticut 92, No. 9 Providence 63  
No. 4 Pittsburgh 73, No. 5 St. John's 67

#### Semifinals

No. 3 Seton Hall 66, No. 2 Villanova 53  
No. 1 Connecticut 95, No. 4 Pittsburgh 63

#### Championship

No. 1 Connecticut 85, No. 3 Seton Hall 49

## 1996

### Gampel Pavilion • University of Connecticut

#### First Round

No. 8 Rutgers 65, No. 9 Boston College 63  
No. 13 Pittsburgh 52, No. 4 Miami 49

No. 5 Villanova 56, No. 12 St. John's 42  
No. 7 Seton Hall 74, No. 10 Georgetown 58  
No. 6 Syracuse 95, No. 11 West Virginia 78

#### Quarterfinals

No. 1 Connecticut 93, No. 8 Rutgers 64  
No. 13 Pittsburgh 59, No. 5 Villanova 57  
No. 7 Seton Hall 69, No. 2 Providence 67  
No. 3 Notre Dame 70, No. 6 Syracuse 55

#### Semifinals

No. 1 Connecticut 83, No. 13 Pittsburgh 51  
No. 3 Notre Dame 69, No. 7 Seton Hall 58

#### Championship

No. 1 Connecticut 71, No. 3 Notre Dame 54

## 1997

### Gampel Pavilion • University of Connecticut

#### First Round

No. 4 Miami 64, No. 13 Pittsburgh 50  
No. 5 Boston College 65, No. 12 St. John's 58  
No. 9 Villanova 66, No. 8 Providence 54  
No. 7 West Virginia 73, No. 10 Seton Hall 66  
No. 6 Rutgers 68, No. 11 Syracuse 67 (ot)

#### Quarterfinals

No. 4 Miami 63, No. 5 Boston College 48  
No. 1 Connecticut 63, No. 9 Villanova 45  
No. 2 Georgetown 79, No. 7 West Virginia 60  
No. 3 Notre Dame 86, No. 6 Rutgers 58

#### Semifinals

No. 1 Connecticut 98, No. 4 Miami 71  
No. 3 Notre Dame 83, No. 2 Georgetown 43

#### Championship

No. 1 Connecticut 86, No. 3 Notre Dame 77

## 1998

### Louis Brown Athletic Center • Rutgers

#### First Round

No. 4 Villanova 56, No. 13 Pittsburgh 51  
No. 5 Notre Dame 94, No. 12 St. John's 57  
No. 8 West Virginia 67, No. 9 Seton Hall 65  
No. 7 Boston College 87, No. 10 Providence 77  
No. 11 Georgetown 68, No. 6 Syracuse 59

#### Quarterfinals

No. 5 Notre Dame 56, No. 4 Villanova 48  
No. 1 Connecticut 84, No. 8 West Virginia 82  
No. 2 Rutgers 61, No. 7 Boston College 52  
No. 3 Miami 81, No. 11 Georgetown 66

#### Semifinals

No. 1 Connecticut 73, No. 5 Notre Dame 53  
No. 2 Rutgers 81, No. 3 Miami 62

#### Championship

No. 1 Connecticut 67, No. 2 Rutgers 58

## 1999

### Louis Brown Athletic Center • Rutgers

#### First Round

No. 4 Boston College 65, No. 13 Seton Hall 63  
No. 5 Georgetown 70, No. 12 Pittsburgh 52  
No. 8 St. John's 79, No. 9 Syracuse 62  
No. 7 Miami 86, No. 10 West Virginia 69  
No. 6 Villanova 68, No. 11 Providence 59

#### Quarterfinals

No. 5 Georgetown 64, No. 4 Boston College 59  
No. 1 Connecticut 82, No. 8 St. John's 58  
No. 2 Rutgers 79, No. 7 Miami 53  
No. 3 Notre Dame 83, No. 6 Villanova 53

#### Semifinals

No. 1 Connecticut 77, No. 5 Georgetown 42  
No. 3 Notre Dame 68, No. 2 Rutgers 61

#### Championship

No. 1 Connecticut 96, No. 3 Notre Dame 75



# BIG EAST TOURNAMENT RESULTS



PREVIEW  
COACHES  
THE HUSKIES  
REVIEW  
RECORDS  
HONORS  
HISTORY  
ALL-TIME RESULTS  
UCONN

## 2000

Gampel Pavilion • University of Connecticut

### First Round

No. 4 Boston College 70, No. 13 West Virginia 53  
No. 5 Georgetown 67, No. 12 Syracuse 65  
No. 9 St. John's 75, No. 8 Pittsburgh 62  
No. 7 Miami 69, No. 10 Seton Hall 42  
No. 6 Villanova 75, No. 11 Providence 53

### Quarterfinals

No. 4 Boston College 75, No. 5 Georgetown 53  
No. 1 Connecticut 85, No. 9 St. John's 41  
No. 2 Notre Dame 67, No. 7 Miami 52  
No. 3 Rutgers 61, No. 6 Villanova 32

### Semifinals

No. 1 Connecticut 79, No. 4 Boston College 54  
No. 3 Rutgers 81, No. 2 Notre Dame 72 (ot)

### Championship

No. 1 Connecticut 79, No. 3 Rutgers 59

## 2001

Gampel Pavilion • University of Connecticut

### First Round

No. 5 Villanova 63, No. 12 St. John's 41  
No. 8 Georgetown 82, No. 9 Syracuse 75 (OT)  
No. 7 Boston College 62, No. 10 Miami 49  
No. 11 Providence 72, No. 6 Seton Hall 61

### Quarterfinals

No. 4 Virginia Tech 72, No. 5 Villanova 67  
No. 1 Notre Dame 89, No. 8 Georgetown 33  
No. 2 Connecticut 96, No. 7 Boston College 53  
No. 3 Rutgers 69, No. 11 Providence 58

### Semifinals

No. 1 Notre Dame 67, No. 4 Virginia Tech 49  
No. 2 Connecticut 94, No. 3 Rutgers 65

### Championship

No. 2 Connecticut 78, No. 1 Notre Dame 76

## 2002

Louis Brown Athletic Center • Rutgers

### First Round

No. 5 Miami 69, No. 12 Georgetown 52  
No. 9 Seton Hall 61, No. 8 Providence 55  
No. 7 Syracuse 80, No. 10 West Virginia 60  
No. 11 Rutgers 44, No. 6 Virginia Tech 43

### Quarterfinals

No. 4 Villanova 69, No. 5 Miami 49  
No. 1 Connecticut 78, No. 9 Seton Hall 48  
No. 7 Syracuse 84, No. 2 Notre Dame 79  
No. 3 Boston College 64, No. 11 Rutgers 59

### Semifinals

No. 1 Connecticut 83, No. 4 Villanova 39  
No. 3 Boston College 67, No. 7 Syracuse 48

### Championship

No. 1 Connecticut 96, No. 3 Boston College 54

## 2003

Louis Brown Athletic Center • Rutgers

### First Round

No. 5 Virginia Tech 66, No. 12 West Virginia 60  
No. 8 Seton Hall 58, No. 9 Georgetown 55  
No. 7 Miami 77, No. 10 Syracuse 64  
No. 6 Notre Dame 73, No. 11 Pittsburgh 65

### Quarterfinals

No. 5 Virginia Tech 74, No. 4 Boston College 70 (ot)  
No. 1 Connecticut 70, No. 8 Seton Hall 47  
No. 7 Miami 77, No. 2 Rutgers 74  
No. 3 Villanova 50, No. 6 Notre Dame 39

### Semifinals

No. 1 Connecticut 71, No. 5 Virginia Tech 54  
No. 3 Villanova 65, No. 7 Miami 59

### Championship

No. 3 Villanova 52, No. 1 Connecticut 48

## 2004

Hartford Civic Center • Hartford, Conn.

### First Round

No. 5 Boston College 64, No. 12 Syracuse 36  
No. 8 Virginia Tech 56, No. 9 Georgetown 47  
No. 7 Rutgers 51, No. 10 Seton Hall 42  
No. 6 West Virginia 84, No. 11 St. John's 59

### Quarterfinals

No. 5 Boston College 65, No. 4 Miami 53  
No. 1 Connecticut 48, No. 8 Virginia Tech 34  
No. 7 Rutgers 51, No. 2 Notre Dame 45  
No. 6 West Virginia 58, No. 3 Villanova 47

### Semifinals

No. 5 Boston College 73, No. 1 Connecticut 70  
No. 7 Rutgers 61, No. 6 West Virginia 51

### Championship

No. 5 Boston College 75, No. 7 Rutgers 57

## 2005

Hartford Civic Center • Hartford, Conn.

### First Round

No. 5 Villanova 67, No. 12 Providence 39  
No. 8 St. John's 45, No. 9 Seton Hall 42  
No. 7 West Virginia 77, No. 10 Pittsburgh 68  
No. 11 Syracuse 65, No. 6 Georgetown 58

### Quarterfinals

No. 5 Villanova 41, No. 4 Boston College 37  
No. 1 Rutgers 69, No. 8 St. John's 45  
No. 2 Notre Dame 70, No. 7 West Virginia 59  
No. 3 Connecticut 82, No. 11 Syracuse 56

### Semifinals

No. 1 Rutgers 64, No. 5 Villanova 59  
No. 3 Connecticut 67, No. 2 Notre Dame 54

### Championship

No. 3 Connecticut 67, No. 1 Rutgers 51

## 2006

Hartford Civic Center • Hartford, Conn.

### First Round

No. 5 Louisville 45, No. 12 West Virginia 43  
No. 8 Villanova 68, No. 9 Marquette 46  
No. 7 South Florida 66, No. 10 Notre Dame 73  
No. 6 Pittsburgh 77, No. 11 Cincinnati 62

### Quarterfinals

No. 12 West Virginia 55, No. 4 St. John's 44  
No. 8 Villanova 37, No. 1 Rutgers 60  
No. 2 Connecticut 71, No. 10 Notre Dame 60  
No. 6 Pittsburgh 46, No. 3 DePaul 69

### Semifinals

No. 12 West Virginia 56, No. 1 Rutgers 40  
No. 2 Connecticut 69, No. 3 DePaul 57

### Championship

No. 2 Connecticut 50, No. 12 West Virginia 44

## 2007

Hartford Civic Center • Hartford, Conn.

### First Round

No. 5 Louisville 68, No. 12 St. John's 54  
No. 8 South Florida 79, No. 9 Seton Hall 64  
No. 7 Notre Dame 71, No. 10 DePaul 76  
No. 6 Pittsburgh 76, No. 11 Cincinnati 71

### Quarterfinals

No. 5 Louisville 68, No. 4 West Virginia 56  
No. 8 South Florida 54, No. 1 Connecticut 74  
No. 2 Rutgers 63, No. 10 DePaul 55  
No. 6 Pittsburgh 51, No. 3 Marquette 61

### Semifinals

No. 5 Louisville 50, No. 1 Connecticut 76  
No. 2 Rutgers 63, No. 3 Marquette 55

### Championship

No. 1 Connecticut 47, No. 2 Rutgers 55

## 2008

XL Center • Hartford, Conn.

### First Round

No. 5 Pittsburgh 66, No. 12 Villanova 63  
No. 8 Marquette 69, No. 9 DePaul 73  
No. 7 Louisville 63, No. 10 St. John's 47  
No. 6 Syracuse 67, No. 11 South Florida 68

### Quarterfinals

No. 5 Pittsburgh 64, No. 4 Notre Dame 53  
No. 9 DePaul 67, No. 1 Connecticut 86  
No. 2 Rutgers 56, No. 7 Louisville 57  
No. 3 West Virginia 64, No. 11 South Florida 42

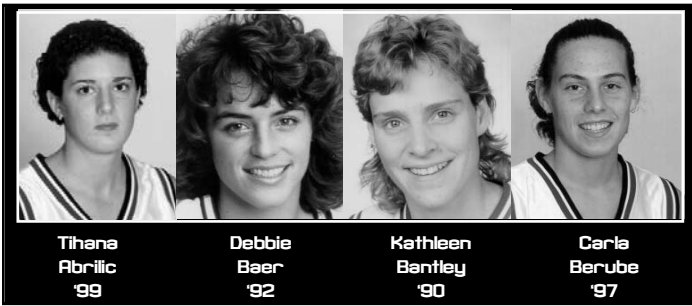
### Semifinals

No. 5 Pittsburgh 47, No. 1 Connecticut 74  
No. 7 Louisville 67, No. 3 West Virginia 60

### Championship

No. 1 Connecticut 65, No. 7 Louisville 59

This is UConn... The first State House in America was built in Connecticut in 1788.



Name	G	FG	FGA	PCT	3FG	3FGA	PCT	FT	FTA	PCT	REB	AVG	A	TO	B	S	MIN	PTS	AVG
<b>ABRILIC, TIHANA</b>																			
1997-98	28	11	36	.306	2	13	.154	12	22	.545	35	1.3	43	36	2	8	268	36	1.3
1998-99	28	17	50	.340	7	24	.292	6	11	.545	29	1.2	26	31	3	15	264	47	1.7
<b>Totals</b>	<b>56</b>	<b>28</b>	<b>86</b>	<b>.326</b>	<b>9</b>	<b>37</b>	<b>.243</b>	<b>18</b>	<b>33</b>	<b>.545</b>	<b>64</b>	<b>1.2</b>	<b>69</b>	<b>67</b>	<b>5</b>	<b>23</b>	<b>532</b>	<b>83</b>	<b>1.5</b>

Name	G	FG	FGA	PCT	3FG	3FGA	PCT	FT	FTA	PCT	REB	AVG	A	TO	B	S	MIN	PTS	AVG
<b>ABROSIMOVA, SVETLANA</b>																			
1997-98	37	191	372	.513	34	80	.425	122	184	.663	235	5.4	114	158	7	90	972	538	14.5
1998-99	34	204	425	.480	38	101	.376	118	186	.634	226	6.6	127	132	6	91	888	564	16.6
1999-00	37	181	369	.491	43	108	.398	91	122	.746	229	6.2	154	105	8	64	1051	496	13.4
2000-01	19	100	186	.538	26	58	.448	41	58	.707	124	6.5	78	33	0	54	466	267	14.1
<b>Totals</b>	<b>127</b>	<b>676</b>	<b>1352</b>	<b>.500</b>	<b>141</b>	<b>347</b>	<b>.406</b>	<b>372</b>	<b>550</b>	<b>.676</b>	<b>814</b>	<b>6.4</b>	<b>473</b>	<b>428</b>	<b>21</b>	<b>299</b>	<b>3377</b>	<b>1865</b>	<b>14.7</b>

Name	G	FG	FGA	PCT	3FG	3FGA	PCT	FT	FTA	PCT	REB	AVG	A	TO	B	S	MIN	PTS	AVG
<b>ARNOLD, TAMMY</b>																			
1995-96	32	53	131	.405	11	33	.333	22	29	.759	85	2.7	22	34	5	12	399	139	4.3
1996-97	26	22	62	.355	6	22	.273	8	17	.471	24	0.9	14	16	7	8	147	58	2.2
<b>Totals</b>	<b>58</b>	<b>75</b>	<b>193</b>	<b>.389</b>	<b>17</b>	<b>55</b>	<b>.309</b>	<b>30</b>	<b>46</b>	<b>.652</b>	<b>109</b>	<b>1.9</b>	<b>36</b>	<b>50</b>	<b>12</b>	<b>20</b>	<b>546</b>	<b>197</b>	<b>3.4</b>

Name	G	FG	FGA	PCT	3FG	3FGA	PCT	FT	FTA	PCT	REB	AVG	A	TO	B	S	MIN	PTS	AVG
<b>BAER, DEBRA</b>																			
1988-89	30	27	70	.386	0	0	.000	20	47	.426	67	2.2	85	84	1	83	653	74	2.5
1989-90	27	35	83	.422	0	1	.000	30	45	.667	64	2.4	68	51	2	53	556	100	3.7
1990-91	34	33	84	.393	1	6	.167	38	57	.667	69	2.0	109	49	3	53	760	105	3.1
1991-92	34	71	159	.447	7	28	.250	32	69	.464	92	2.7	151	104	3	86	988	181	5.3
<b>Totals</b>	<b>125</b>	<b>166</b>	<b>396</b>	<b>.419</b>	<b>8</b>	<b>35</b>	<b>.229</b>	<b>120</b>	<b>218</b>	<b>.551</b>	<b>292</b>	<b>2.3</b>	<b>413</b>	<b>288</b>	<b>9</b>	<b>275</b>	<b>2957</b>	<b>460</b>	<b>3.4</b>

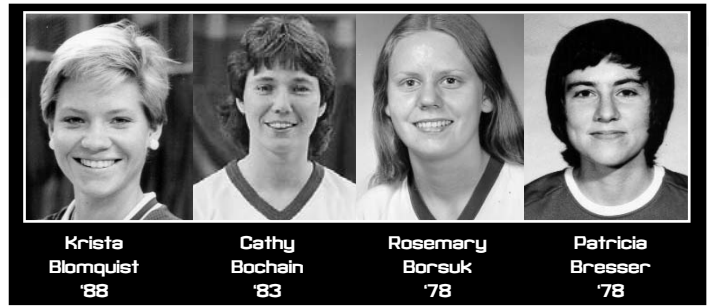
Name	G	FG	FGA	PCT	3FG	3FGA	PCT	FT	FTA	PCT	REB	AVG	A	TO	B	S	MIN	PTS	AVG
<b>BANTLEY, KATHLEEN</b>																			
1988-89	13	1	7	.143	0	0	.000	0	5	.000	3	0.2	1	4	0	3	38	2	0.2
1989-90	11	0	5	.000	0	0	.000	0	1	.000	4	0.4	1	5	0	0	29	0	0.0
<b>Totals</b>	<b>24</b>	<b>1</b>	<b>12</b>	<b>.083</b>	<b>0</b>	<b>0</b>	<b>.000</b>	<b>0</b>	<b>6</b>	<b>.000</b>	<b>7</b>	<b>0.3</b>	<b>2</b>	<b>9</b>	<b>0</b>	<b>3</b>	<b>67</b>	<b>2</b>	<b>0.1</b>

Name	G	FG	FGA	PCT	3FG	3FGA	PCT	FT	FTA	PCT	REB	AVG	A	TO	B	S	MIN	PTS	AVG
<b>BASCOM, KERRY</b>																			
1987-88	27	94	202	.465	0	3	.000	38	56	.679	147	5.4	23	51	4	7	542	226	8.4
1988-89	29	244	440	.555	60	126	.476	108	139	.777	237	8.2	46	79	11	36	874	656	22.6
1989-90	30	219	452	.485	52	137	.380	125	154	.812	271	9.0	65	93	7	45	992	615	20.5
1990-91	34	246	470	.523	49	142	.345	139	166	.837	260	7.6	87	74	5	39	1048	680	20.0
<b>Totals</b>	<b>120</b>	<b>803</b>	<b>1564</b>	<b>.513</b>	<b>161</b>	<b>408</b>	<b>.395</b>	<b>410</b>	<b>515</b>	<b>.796</b>	<b>915</b>	<b>7.6</b>	<b>221</b>	<b>297</b>	<b>27</b>	<b>127</b>	<b>3456</b>	<b>2177</b>	<b>18.1</b>

Name	G	FG	FGA	PCT	3FG	3FGA	PCT	FT	FTA	PCT	REB	AVG	A	TO	B	S	MIN	PTS	AVG
<b>BATTLE, ASHLEY</b>																			
2000-01	5	9	13	.692	0	0	.000	3	8	.375	14	2.8	7	12	0	9	52	21	4.2
2001-02	39	77	172	.448	8	32	.250	50	74	.676	183	4.7	49	56	6	35	653	212	5.4
2002-03	37	118	245	.482	7	26	.269	64	95	.674	198	5.4	70	69	7	55	828	307	8.3
2003-04	35	93	179	.517	7	17	.412	63	76	.829	153	4.4	50	56	6	56	674	256	7.3
2004-05	33	95	229	.415	21	70	.300	47	60	.783	148	4.5	59	65	5	36	673	258	7.8
<b>Totals</b>	<b>149</b>	<b>392</b>	<b>838</b>	<b>.468</b>	<b>43</b>	<b>145</b>	<b>.297</b>	<b>227</b>	<b>313</b>	<b>.725</b>	<b>696</b>	<b>4.7</b>	<b>235</b>	<b>258</b>	<b>24</b>	<b>191</b>	<b>2880</b>	<b>1054</b>	<b>7.1</b>

Name	G	FG	FGA	PCT	3FG	3FGA	PCT	FT	FTA	PCT	REB	AVG	A	TO	B	S	MIN	PTS	AVG
<b>BERUBE, CARLA</b>																			
1993-94	33	145	268	.541	13	34	.382	69	99	.697	162	4.9	101	100	8	39	849	372	11.3
1994-95	33	101	220	.459	10	32	.313	69	102	.676	157	4.8	63	60	4	27	626	281	8.5
1995-96	38	128	269	.476	13	32	.406	73	96	.760	174	4.6	115	58	9	35	976	342	9.0
1996-97	34	150	264	.568	11	24	.458	75	104	.721	184	5.4	105	58	10	40	869	384	11.4
<b>Totals</b>	<b>138</b>	<b>524</b>	<b>1021</b>	<b>.513</b>	<b>47</b>	<b>122</b>	<b>.385</b>	<b>286</b>	<b>401</b>	<b>.713</b>	<b>677</b>	<b>4.9</b>	<b>384</b>	<b>276</b>	<b>31</b>	<b>141</b>	<b>3320</b>	<b>1379</b>	<b>10.0</b>

Name	G	FG	FGA	PCT	3FG	3FGA	PCT	FT	FTA	PCT	REB	AVG	A	TO	B	S	MIN	PTS	AVG
<b>BETTER, KIM</b>																			
1992-93	28	24	82	.293	4	21	.190	30	40	.750	78	2.8	26	38	1	19	446	82	2.9
1993-94	32	37	79	.468	0	3	.000	25	44	.568	51	1.6	26	34	0	40	382	99	3.1
1994-95	33	47	112	.420	5	23	.217	59	92	.641	94	2.8	48	51	1	34	470	158	4.8
1995-96	26	14	31	.452	1	3	.333	21	30	.700	33	1.3	19	15	0	12	188	50	1.9
<b>Totals</b>	<b>119</b>	<b>122</b>	<b>304</b>	<b>.401</b>	<b>10</b>	<b>50</b>	<b>.200</b>	<b>135</b>	<b>206</b>	<b>.656</b>	<b>256</b>	<b>2.2</b>	<b>119</b>	<b>138</b>	<b>2</b>	<b>105</b>	<b>1486</b>	<b>389</b>	<b>3.3</b>



Name	G	FG	FGA	PCT	3FG	3FGA	PCT	FT	FTA	PCT	REB	AVG	A	TO	B	S	MIN	PTS	AVG
<b>BIRD, SUE</b>																			
1998-99	8	16	41	.316	6	19	.316	3	4	.750	16	2.0	25	16	1	15	160	41	5.1
1999-00	37	140	279	.502	72	145	.497	53	59	.898	94	2.5	160	80	1	69	1052	405	10.9
2000-01	34	137	309	.443	60	139	.432	35	45	.778	89	2.6	169	88	4	63	941	369	10.9
2001-02	39	198	392	.505	69	148	.466	98	104	.942	131	3.4	231	93	9	96	1168	563	14.4
<b>Totals</b>	<b>118</b>	<b>491</b>	<b>1021</b>	<b>.481</b>	<b>207</b>	<b>451</b>	<b>.459</b>	<b>189</b>	<b>212</b>	<b>.892</b>	<b>330</b>	<b>2.8</b>	<b>585</b>	<b>277</b>	<b>15</b>	<b>243</b>	<b>3321</b>	<b>1378</b>	<b>11.7</b>

Name	G	FG	FGA	PCT	3FG	3FGA	PCT	FT	FTA	PCT	REB	AVG	A	TO	B	S	MIN	PTS	AVG
<b>BLOMQUIST, KRISTA</b>																			
1985-86	15	72	160	.450	-	-	-	16	31	.516	70	4.7	34	-	-	23	-	160	10.7
1986-87	13	24	66	.364	-	-	-	4	5	.800	26	2.0	15	14	1	7	173	52	4.0
1987-88	28	108																	



# ALL-TIME LETTERWINNERS



PREVIEW

COACHES

THE HUSKIES

REVIEW

RECORDS

HONORS

HISTORY

ALL-TIME RESULTS

WOMEN



**Swin Cash '02**      **Kathleen Cermola '84**      **Leigh Curl '85**      **Wendy Davis '92**

Name	G	FG	FGA	PCT	3FG	3FGA	PCT	FT	FTA	PCT	REB	AVG	A	TO	B	S	MIN	PTS	AVG
<b>CARTER, BARBARA</b>																			
1986-87	5	3	8	.375	-	-	-	1	3	.333	1	0.2	1	1	0	4	23	7	1.4
1987-88	11	7	20	.350	0	0	.000	1	4	.250	4	0.4	3	6	1	5	55	15	1.4
<b>Totals</b>	<b>16</b>	<b>10</b>	<b>28</b>	<b>.357</b>	<b>-</b>	<b>-</b>	<b>-</b>	<b>2</b>	<b>7</b>	<b>.286</b>	<b>5</b>	<b>0.3</b>	<b>4</b>	<b>7</b>	<b>1</b>	<b>9</b>	<b>78</b>	<b>22</b>	<b>1.4</b>

Name	G	FG	FGA	PCT	3FG	3FGA	PCT	FT	FTA	PCT	REB	AVG	A	TO	B	S	MIN	PTS	AVG
<b>CASH, SWIN</b>																			
1998-99	22	75	127	.591	0	0	.000	59	92	.634	115	5.2	14	31	15	20	332	209	9.5
1999-00	37	141	265	.532	0	0	.000	85	132	.644	196	5.3	24	81	26	40	768	367	9.9
2000-01	35	162	292	.555	0	0	.000	103	174	.592	263	7.5	51	76	34	33	832	427	12.2
2001-02	39	220	401	.549	0	1	.000	140	200	.700	336	8.6	86	88	55	55	1085	580	14.9
<b>Totals</b>	<b>133</b>	<b>598</b>	<b>1085</b>	<b>.551</b>	<b>0</b>	<b>1</b>	<b>.000</b>	<b>387</b>	<b>598</b>	<b>.647</b>	<b>910</b>	<b>6.8</b>	<b>175</b>	<b>276</b>	<b>130</b>	<b>148</b>	<b>3017</b>	<b>1583</b>	<b>11.9</b>

Name	G	FG	FGA	PCT	3FG	3FGA	PCT	FT	FTA	PCT	REB	AVG	A	TO	B	S	MIN	PTS	AVG
<b>CERMOLA, KATHLEEN</b>																			
1980-81	13	37	84	.440	-	-	-	12	16	.750	37	2.8	48	-	-	30	-	86	6.6
<b>1981-82 MEDICAL REDSHIRT</b>																			
1982-83	27	60	136	.441	-	-	-	31	46	.674	45	1.7	90	-	-	58	-	151	5.6
1983-84	29	95	197	.482	-	-	-	27	44	.614	55	1.9	91	-	-	54	-	217	7.5
<b>Totals</b>	<b>69</b>	<b>192</b>	<b>417</b>	<b>.460</b>	<b>-</b>	<b>-</b>	<b>-</b>	<b>70</b>	<b>106</b>	<b>.660</b>	<b>137</b>	<b>2.0</b>	<b>229</b>	<b>-</b>	<b>-</b>	<b>142</b>	<b>-</b>	<b>454</b>	<b>6.6</b>

Name	G	FG	FGA	PCT	3FG	3FGA	PCT	FT	FTA	PCT	REB	AVG	A	TO	B	S	MIN	PTS	AVG
<b>CHARLES, TINA</b>																			
2006-07	36	190	322	.590	0	0	.000	76	128	.594	296	8.2	30	67	81	13	827	456	12.7
2007-08	38	220	364	.604	0	0	.000	100	173	.578	351	9.2	49	75	68	28	982	540	14.2
<b>Totals</b>	<b>74</b>	<b>410</b>	<b>686</b>	<b>.598</b>	<b>0</b>	<b>0</b>	<b>.000</b>	<b>176</b>	<b>301</b>	<b>.585</b>	<b>647</b>	<b>8.7</b>	<b>79</b>	<b>142</b>	<b>149</b>	<b>41</b>	<b>1809</b>	<b>996</b>	<b>13.5</b>

Name	G	FG	FGA	PCT	3FG	3FGA	PCT	FT	FTA	PCT	REB	AVG	A	TO	B	S	MIN	PTS	AVG
<b>CHENG, MICHAEL (MGR.) 2000-04</b>																			
<b>CLAPIS, PHYLLIS</b>																			
1979-80	1	0	0	.000	-	-	-	0	0	.000	0	0.0	0	-	-	0	-	0	0.0
1980-81	14	9	27	.333	-	-	-	4	6	.667	6	0.4	4	-	-	8	-	22	1.6
<b>Totals</b>	<b>15</b>	<b>9</b>	<b>27</b>	<b>.333</b>	<b>-</b>	<b>-</b>	<b>-</b>	<b>4</b>	<b>6</b>	<b>.667</b>	<b>6</b>	<b>0.4</b>	<b>4</b>	<b>-</b>	<b>-</b>	<b>8</b>	<b>-</b>	<b>22</b>	<b>1.6</b>

Name	G	FG	FGA	PCT	3FG	3FGA	PCT	FT	FTA	PCT	REB	AVG	A	TO	B	S	MIN	PTS	AVG
<b>CLARK, JEAN</b>																			
1997-98	5	1	3	.333	0	0	.000	2	5	.400	7	1.4	0	1	1	2	19	4	0.8

Name	G	FG	FGA	PCT	3FG	3FGA	PCT	FT	FTA	PCT	REB	AVG	A	TO	B	S	MIN	PTS	AVG
<b>CLEAVER, ANN</b>																			
1975-76	15	10	33	.303	-	-	-	2	11	.181	52	3.5	3	20	-	-	-	22	1.5
1976-77	20	27	94	.287	-	-	-	14	34	.412	133	6.7	5	-	-	-	-	67	3.4
1977-78	17	16	43	.372	-	-	-	5	16	.313	56	3.3	5	-	-	-	-	37	2.2
<b>Totals</b>	<b>52</b>	<b>53</b>	<b>170</b>	<b>.312</b>	<b>-</b>	<b>-</b>	<b>-</b>	<b>21</b>	<b>61</b>	<b>.344</b>	<b>241</b>	<b>4.6</b>	<b>13</b>	<b>-</b>	<b>-</b>	<b>-</b>	<b>-</b>	<b>126</b>	<b>2.4</b>

Name	G	FG	FGA	PCT	3FG	3FGA	PCT	FT	FTA	PCT	REB	AVG	A	TO	B	S	MIN	PTS	AVG
<b>CLYMER, SHELLY</b>																			
1982-83	12	4	10	.400	-	-	-	5	9	.556	11	1.0	0	-	-	1	-	13	1.1

Name	G	FG	FGA	PCT	3FG	3FGA	PCT	FT	FTA	PCT	REB	AVG	A	TO	B	S	MIN	PTS	AVG
<b>CONLON, MARIA</b>																			
2000-01	23	26	61	.426	19	45	.422	12	19	.632	18	0.8	13	8	3	11	83	83	3.6
2001-02	39	54	165	.327	39	118	.331	14	18	.778	78	2.0	72	35	3	23	691	161	4.1
2002-03	38	86	215	.400	54	148	.365	36	48	.750	95	2.5	130	65	7	48	1128	262	6.9
2003-04	35	68	174	.391	58	141	.411	14	21	.667	102	2.9	100	59	4	39	988	208	5.9
<b>Totals</b>	<b>135</b>	<b>234</b>	<b>615</b>	<b>.380</b>	<b>170</b>	<b>452</b>	<b>.376</b>	<b>76</b>	<b>106</b>	<b>.717</b>	<b>293</b>	<b>2.2</b>	<b>315</b>	<b>167</b>	<b>17</b>	<b>121</b>	<b>2890</b>	<b>714</b>	<b>5.3</b>

Name	G	FG	FGA	PCT	3FG	3FGA	PCT	FT	FTA	PCT	REB	AVG	A	TO	B	S	MIN	PTS	AVG
<b>CONRAD, ELIZABETH</b>																			
1979-80	19	14	58	.241	-	-	-	17	19	.895	11	0.6	27	-	-	15	-	45	2.4

Name	G	FG	FGA	PCT	3FG	3FGA	PCT	FT	FTA	PCT	REB	AVG	A	TO	B	S	MIN	PTS	AVG
<b>CROCKETT, WILLNETT</b>																			
2002-03	36	71	145	.490	1	3	.333	63	97	.649	167	4.6	22	43	18	15	569	206	5.7
2003-04	27	42	65	.646	0	0	.000	28	48	.583	86	3.2	12	43	12	16	369	112	4.1
2004-05	31	62	104	.596	0	0	.000	30	50	.600	142	4.6	23	42	22	25	508	154	5.0
2005-06	37	52	101	.515	0	0	.000	26	41	.634	188	5.1	25	36	30	25	646	130	3.5
<b>Totals</b>	<b>131</b>	<b>227</b>	<b>415</b>	<b>.547</b>	<b>1</b>	<b>3</b>	<b>.333</b>	<b>147</b>	<b>236</b>	<b>.623</b>	<b>583</b>	<b>4.5</b>	<b>82</b>	<b>164</b>	<b>82</b>	<b>81</b>	<b>2092</b>	<b>602</b>	<b>4.6</b>



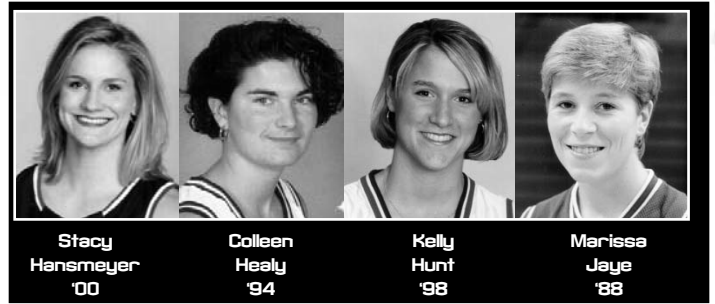
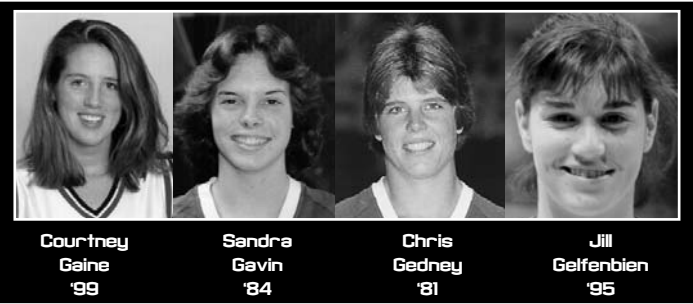
**Evelyn Doerfler '85**      **Amy Duran '99**      **Audrey Epstein '86**      **Anne Folkowski '87**

Name	G	FG	FGA	PCT	3FG	3FGA	PCT	FT	FTA	PCT	REB	AVG	A	TO	B	S	MIN	PTS	AVG
<b>CURL, LEIGH</b>																			
1981-82	27	131	272	.482	-	-	-	49	78	.628	209	7.7	23	-	-	22	-	311	11.5
1982-83	21	102	235	.434	-	-	-	55	67	.821	167	8.0	35	-	-	35	-	259	12.3
1983-84	29	176	369	.477	-	-	-	65	100	.650	238	8.2	36	-	-	51	-	417	14.4
1984-85	27	168	356	.472	-	-	-	65	92	.707	220	8.1	26	-	-	37	-	401	14.9
<b>Totals</b>	<b>104</b>	<b>577</b>	<b>1232</b>	<b>.468</b>	<b>-</b>	<b>-</b>	<b>-</b>	<b>234</b>	<b>337</b>	<b>.694</b>	<b>834</b>	<b>8.0</b>	<b>120</b>	<b>-</b>	<b>-</b>	<b>145</b>	<b>-</b>	<b>1388</b>	<b>13.4</b>

Name	G	FG	FGA	PCT	3FG	3FGA	PCT	FT	FTA	PCT	REB	AVG	A	TO	B	S	MIN	PTS	AVG
<b>CURLEY, KATHY</b>																			
1979-80	5	9	12	.750	-	-	-	2	3	.667	7	1.4	0	-	-	1	-	20	4.0

Name	G	FG	FGA	PCT	3FG	3FGA	PCT	FT	FTA	PCT	REB	AVG	A	TO	B	S	MIN	PTS	AVG
<b>CURTIS, MARY</b>																			
1976-77	2	1	2	.500	-	-	-	0	1	.000	2	1.0	0	-	-	-	-	2	1.0

Name	G	FG	FGA	PCT	3FG	3FGA	PCT	FT	FTA	PCT	REB	AVG	A	TO	B	S	MIN	PTS	AVG
<b>CZEL, MARCI</b>																			
1997-98	21	4	12	.333	1	3	.333	6	8	.750	12	0.6	3	5	0	3	61	15	0.7
1998-99	23	7	22	.318	2	7													



Name	G	FG	FGA	PCT	3FG	3FGA	PCT	FT	FTA	PCT	REB	AVG	A	TO	B	S	MIN	PTS	AVG	
<b>ELLIOTT, JAMELLE</b>																				
1992-93	29	110	227	.485	8	26	.308	65	85	.765	227	7.8	33	85	2	21	779	293	10.1	
1993-94	33	145	288	.503	7	34	.206	93	130	.715	244	7.4	66	88	5	27	980	390	11.8	
1994-95	35	131	253	.518	14	24	.583	106	129	.822	282	8.1	98	82	3	30	911	382	10.9	
1995-96	38	116	238	.487	21	59	.356	69	86	.802	301	7.9	79	71	12	34	1045	322	8.5	
<b>Totals</b>	<b>135</b>	<b>502</b>	<b>1006</b>	<b>.499</b>	<b>50</b>	<b>143</b>	<b>.350</b>	<b>333</b>	<b>430</b>	<b>.774</b>	<b>1054</b>	<b>7.8</b>	<b>276</b>	<b>326</b>	<b>22</b>	<b>112</b>	<b>3715</b>	<b>1387</b>	<b>10.3</b>	

Name	G	FG	FGA	PCT	3FG	3FGA	PCT	FT	FTA	PCT	REB	AVG	A	TO	B	S	MIN	PTS	AVG	
<b>GARDLER, MEGHAN</b>																				
2006-07	29	12	51	.235	7	37	.189	7	13	.538	40	1.4	10	16	6	3	222	38	1.3	
2007-08	32	26	75	.347	7	32	.219	21	32	.656	65	2.0	26	16	9	15	328	80	2.5	
<b>Totals</b>	<b>61</b>	<b>38</b>	<b>126</b>	<b>.302</b>	<b>14</b>	<b>69</b>	<b>.203</b>	<b>28</b>	<b>45</b>	<b>.622</b>	<b>105</b>	<b>1.7</b>	<b>36</b>	<b>32</b>	<b>15</b>	<b>18</b>	<b>550</b>	<b>118</b>	<b>1.9</b>	

Name	G	FG	FGA	PCT	3FG	3FGA	PCT	FT	FTA	PCT	REB	AVG	A	TO	B	S	MIN	PTS	AVG	
<b>EPSTEIN, AUDREY</b>																				
1982-83	18	12	44	.273	-	-	-	9	13	.692	20	1.1	9	-	-	4	-	33	1.8	
1983-84	20	13	40	.325	-	-	-	5	9	.556	14	0.7	9	-	-	2	-	31	1.8	
1984-85	27	52	111	.468	-	-	-	9	19	.474	49	1.8	59	-	-	24	-	113	4.2	
1985-86	27	58	163	.356	-	-	-	14	16	.875	63	2.3	67	-	-	26	-	130	4.8	
<b>Totals</b>	<b>92</b>	<b>135</b>	<b>358</b>	<b>.377</b>	<b>-</b>	<b>-</b>	<b>-</b>	<b>37</b>	<b>57</b>	<b>.649</b>	<b>146</b>	<b>1.6</b>	<b>144</b>	<b>-</b>	<b>-</b>	<b>56</b>	<b>-</b>	<b>307</b>	<b>3.3</b>	

Name	G	FG	FGA	PCT	3FG	3FGA	PCT	FT	FTA	PCT	REB	AVG	A	TO	B	S	MIN	PTS	AVG	
<b>GARVIN, DALE</b>																				
1979-80	21	33	90	.367	-	-	-	14	25	.560	103	4.9	6	-	-	13	-	80	3.8	

Name	G	FG	FGA	PCT	3FG	3FGA	PCT	FT	FTA	PCT	REB	AVG	A	TO	B	S	MIN	PTS	AVG	
<b>FANCY, DAWN</b>																				
1977-78	16	17	55	.309	-	-	-	5	12	.417	32	2.0	22	-	-	-	-	39	2.4	

Name	G	FG	FGA	PCT	3FG	3FGA	PCT	FT	FTA	PCT	REB	AVG	A	TO	B	S	MIN	PTS	AVG	
<b>GAVIN, SANDRA</b>																				
1980-81	29	59	175	.337	-	-	-	34	54	.630	82	2.8	79	-	-	42	-	152	5.2	
1981-82	25	64	174	.368	-	-	-	24	39	.615	49	2.0	113	-	-	28	-	152	6.1	
1982-83	27	95	224	.424	-	-	-	31	46	.674	43	1.6	107	-	-	35	-	221	8.2	
1983-84	29	74	204	.363	-	-	-	51	69	.739	42	1.4	91	-	-	54	-	199	6.9	
<b>Totals</b>	<b>110</b>	<b>292</b>	<b>777</b>	<b>.376</b>	<b>-</b>	<b>-</b>	<b>-</b>	<b>140</b>	<b>208</b>	<b>.837</b>	<b>216</b>	<b>2.0</b>	<b>390</b>	<b>-</b>	<b>-</b>	<b>159</b>	<b>-</b>	<b>724</b>	<b>6.6</b>	

Name	G	FG	FGA	PCT	3FG	3FGA	PCT	FT	FTA	PCT	REB	AVG	A	TO	B	S	MIN	PTS	AVG	
<b>FELLOWS, SUSAN</b>																				
1974-75	10	40	-	-	-	-	-	18	30	.600	-	-	-	-	-	-	-	98	9.8	
1975-76	19	104	253	.411	-	-	-	49	92	.533	128	6.7	3	50	-	-	-	267	14.1	
1976-77	5	5	17	.294	-	-	-	3	4	.750	9	1.8	1	3	-	-	-	13	2.6	
<b>Totals</b>	<b>34</b>	<b>149</b>	<b>-</b>	<b>-</b>	<b>-</b>	<b>-</b>	<b>-</b>	<b>70</b>	<b>126</b>	<b>.556</b>	<b>-</b>	<b>-</b>	<b>-</b>	<b>-</b>	<b>-</b>	<b>-</b>	<b>-</b>	<b>378</b>	<b>11.1</b>	

Name	G	FG	FGA	PCT	3FG	3FGA	PCT	FT	FTA	PCT	REB	AVG	A	TO	B	S	MIN	PTS	AVG	
<b>GEDNEY, CHRISTINE</b>																				
1977-78	20	115	270	.426	-	-	-	50	89	.562	169	8.5	28	-	-	-	-	280	14.0	
1978-79	20	138	317	.435	-	-	-	67	105	.638	166	8.3	14	-	-	44	-	343	17.2	
1979-80	18	130	306	.425	-	-	-	60	78	.769	147	8.2	36	-	-	38	-	320	17.8	
1980-81	30	197	425	.464	-	-	-	72	90	.800	209	7.0	57	-	-	52	-	466	15.5	
<b>Totals</b>	<b>88</b>	<b>580</b>	<b>1318</b>	<b>.440</b>	<b>-</b>	<b>-</b>	<b>-</b>	<b>249</b>	<b>362</b>	<b>.688</b>	<b>691</b>	<b>7.9</b>	<b>135</b>	<b>-</b>	<b>-</b>	<b>-</b>	<b>-</b>	<b>1409</b>	<b>16.0</b>	

Name	G	FG	FGA	PCT	3FG	3FGA	PCT	FT	FTA	PCT	REB	AVG	A	TO	B	S	MIN	PTS	AVG	
<b>FERNANDES, JACQUEE</b>																				
2006-07	25	1	6	.167	0	1	.000	9	10	.900	15	0.6	6	5	1	3	84	11	0.4	
2007-08	26	5	15	.333	0	4	.000	8	16	.500	17	0.7	2	3	1	4	103	18	0.7	
<b>Totals</b>	<b>51</b>	<b>6</b>	<b>21</b>	<b>.286</b>	<b>0</b>	<b>5</b>	<b>.000</b>	<b>17</b>	<b>26</b>	<b>.654</b>	<b>32</b>	<b>0.6</b>	<b>8</b>	<b>8</b>	<b>2</b>	<b>7</b>	<b>187</b>	<b>29</b>	<b>0.6</b>	

Name	G	FG	FGA	PCT	3FG	3FGA	PCT	FT	FTA	PCT	REB	AVG	A	TO	B	S	MIN	PTS	AVG	
<b>GELFENBIEN, JILL</b>																				
1994-95	28	4	17	.235	0	0	.000	2	2	1.000	22	0.8	1	7	2	0	95	10	0.4	

Name	G	FG	FGA	PCT	3FG	3FGA	PCT	FT	FTA	PCT	REB	AVG	A	TO	B	S	MIN	PTS	AVG	
<b>FERRIER, KATHLEEN</b>																				
1989-90	29	82	146	.562	0	0	.000	43	65	.662	121	4.2	16	51	11	7	422	207	7.1	
1990-91	18	22	45	.489	0	0	.000	21	34	.618	37	2.1	3	22	5	1	144	65	3.6	
1991-92	34	70	114	.614	0	0	.000	40	68	.588	119	3.5	10	33	10	7	424	180	5.3	
1992-93	29	129	241	.535	0	0	.000	43	68	.632	133	4.6	20	73	9	9	640	301	10.4	
<b>Totals</b>	<b>110</b>	<b>303</b>	<b>546</b>	<b>.555</b>	<b>0</b>	<b>0</b>	<b>.000</b>	<b>147</b>	<b>235</b>	<b>.626</b>	<b>410</b>	<b>3.7</b>	<b>49</b>	<b>179</b>	<b>35</b>	<b>24</b>	<b>1630</b>	<b>753</b>	<b>6.9</b>	

Name	G	FG	FGA	PCT	3FG	3FGA	PCT	FT	FTA	PCT	REB	AVG	A	TO	B	S	MIN	PTS	AVG	
<b>GLENNEY, MARCI</b>																				
1997-98	32	19	43	.442	7	17	.412	16	21	.762	40	1.3	23	20	0	14	280	61	1.9	
1998-99	30	44	96	.458	19	50	.380	21	26	.808	38	1.3	55	51	3	22	486	128	4.3	
<b>Totals</b>	<b>62</b>	<b>63</b>	<b>139</b>	<b>.453</b>	<b>26</b>	<b>67</b>	<b>.388</b>	<b>37</b>	<b>47</b>	<b>.787</b>	<b>78</b>	<b>1.3</b>	<b>78</b>	<b>71</b>	<b>3</b>	<b>36</b>	<b>766</b>	<b>189</b>	<b>3.0</b>	

Name	G	FG	FGA	PCT	3FG	3FGA	PCT	FT	FTA	PCT	REB	AVG	A	TO	B	S	MIN	PTS	AVG	
<b>FIESELER, KATHERINE (MGR.) 1999-2002</b>																				

Name	G	FG	FGA
------	---	----	-----



# ALL-TIME LETTERWINNERS



PREVIEW

COACHES

THE HUSKIES

REVIEW

RECORDS

HONORS

HISTORY

ALL-TIME RESULTS

UDCONN



Name	G	FG	FGA	PCT	3FG	3FGA	PCT	FT	FTA	PCT	REB	AVG	A	TO	B	S	MIN	PTS	AVG
<b>HEALY, COLLEEN (MGR.) 1990-91</b>																			
1991-92	15	1	7	.143	0	0	.000	5	6	.833	3	0.2	2	2	0	3	39	7	0.5
1992-93	28	14	34	.412	2	9	.222	9	16	.563	30	1.1	21	28	0	6	348	39	1.4
1993-94	19	4	8	.500	0	2	.000	7	10	.700	5	0.3	4	6	0	0	58	15	0.8
<b>Totals</b>	<b>62</b>	<b>19</b>	<b>49</b>	<b>.388</b>	<b>2</b>	<b>11</b>	<b>.182</b>	<b>21</b>	<b>32</b>	<b>.656</b>	<b>38</b>	<b>0.6</b>	<b>27</b>	<b>36</b>	<b>0</b>	<b>9</b>	<b>445</b>	<b>61</b>	<b>1.0</b>

<b>HEDGES, DARLENE</b>																			
1979-80	20	26	62	.419	-	-	-	22	32	.688	77	3.9	1	-	-	11	-	74	3.7

<b>HENNINGER, DENISE (MGR.) 1984-87</b>																			
---	--	--	--	--	--	--	--	--	--	--	--	--	--	--	--	--	--	--	--

<b>HOUSTON, CHARDE</b>																			
2004-05	33	148	296	.500	0	1	.000	62	99	.626	178	5.4	42	69	49	51	643	358	10.8
2005-06	33	125	237	.527	0	2	.000	63	89	.708	159	4.8	28	85	30	36	556	313	9.5
2006-07	36	188	347	.542	0	0	.000	73	111	.658	251	7.0	90	98	39	68	948	449	12.5
2007-08	37	113	205	.551	0	1	.000	19	37	.514	147	4.0	42	58	14	34	584	245	6.6
<b>Totals</b>	<b>139</b>	<b>574</b>	<b>1085</b>	<b>.529</b>	<b>0</b>	<b>4</b>	<b>.000</b>	<b>217</b>	<b>336</b>	<b>.646</b>	<b>735</b>	<b>5.3</b>	<b>202</b>	<b>310</b>	<b>132</b>	<b>189</b>	<b>2731</b>	<b>1365</b>	<b>9.8</b>

<b>HUNT, KELLEY</b>																			
1994-95	30	22	58	.379	0	0	.000	23	43	.535	55	1.8	11	33	4	8	188	67	2.2
1995-96	31	34	56	.607	0	0	.000	34	56	.607	79	2.5	12	38	4	7	242	102	3.3
1996-97	28	23	46	.500	0	0	.000	6	12	.500	44	1.6	10	25	3	7	164	52	1.9
1997-98	36	45	92	.489	0	0	.000	37	51	.725	104	2.9	48	56	4	19	519	127	3.5
<b>Totals</b>	<b>125</b>	<b>124</b>	<b>252</b>	<b>.492</b>	<b>0</b>	<b>0</b>	<b>.000</b>	<b>100</b>	<b>162</b>	<b>.617</b>	<b>282</b>	<b>3.2</b>	<b>81</b>	<b>152</b>	<b>15</b>	<b>41</b>	<b>1113</b>	<b>348</b>	<b>3.9</b>

<b>HUNTER, BRITTANY</b>																			
2005-06	32	66	133	.496	0	0	.000	26	41	.634	79	2.5	3	41	14	10	294	158	4.9
2006-07	25	62	101	.614	0	0	.000	16	32	.500	97	3.9	11	19	7	223	140	5.6	
2007-08	30	77	133	.579	0	0	.000	12	22	.545	99	3.3	21	29	21	12	331	166	5.5
<b>Totals</b>	<b>87</b>	<b>205</b>	<b>367</b>	<b>.559</b>	<b>0</b>	<b>0</b>	<b>.000</b>	<b>54</b>	<b>95</b>	<b>.568</b>	<b>275</b>	<b>3.2</b>	<b>35</b>	<b>89</b>	<b>54</b>	<b>29</b>	<b>848</b>	<b>464</b>	<b>5.3</b>

<b>JAYE, MARISSA</b>																			
1985-86	1	2	2	1.000	-	-	-	0	0	.000	2	2.0	0	-	-	1	-	4	4.0
1986-87	15	8	17	.471	-	-	-	17	30	.567	34	2.3	4	15	2	2	202	33	2.2
1987-88	25	32	62	.516	0	0	.000	26	36	.722	56	2.2	9	36	1	21	335	90	3.6
<b>Totals</b>	<b>41</b>	<b>42</b>	<b>81</b>	<b>.519</b>	<b>-</b>	<b>-</b>	<b>-</b>	<b>43</b>	<b>66</b>	<b>.652</b>	<b>92</b>	<b>2.2</b>	<b>13</b>	<b>51</b>	<b>3</b>	<b>24</b>	<b>537</b>	<b>127</b>	<b>3.1</b>

<b>JINKS, JIM (MGR.) 1991-92</b>																			
----------------------------------	--	--	--	--	--	--	--	--	--	--	--	--	--	--	--	--	--	--	--

<b>JOHNSON, KENNITRA</b>																			
1999-00	37	97	213	.455	38	106	.358	36	60	.600	67	1.8	94	68	9	74	828	268	7.2
2000-01	34	71	170	.418	31	96	.323	20	30	.667	47	1.4	65	40	6	55	608	193	5.7
<b>Totals</b>	<b>71</b>	<b>168</b>	<b>383</b>	<b>.439</b>	<b>69</b>	<b>202</b>	<b>.342</b>	<b>56</b>	<b>90</b>	<b>.622</b>	<b>114</b>	<b>1.6</b>	<b>159</b>	<b>108</b>	<b>15</b>	<b>129</b>	<b>1436</b>	<b>461</b>	<b>6.5</b>

<b>JONES, ASJHA</b>																			
1998-99	34	140	284	.493	0	0	.000	52	73	.712	170	5.0	45	74	25	26	681	332	9.8
1999-00	36	127	251	.506	5	10	.500	60	95	.632	177	4.9	33	61	27	20	632	319	8.9
2000-01	35	128	291	.440	4	16	.250	44	73	.603	190	5.4	50	55	38	32	683	304	8.7
2001-02	39	247	445	.555	8	25	.320	45	75	.600	257	6.6	66	63	61	41	961	547	14.0
<b>Totals</b>	<b>144</b>	<b>642</b>	<b>1271</b>	<b>.505</b>	<b>17</b>	<b>51</b>	<b>.333</b>	<b>201</b>	<b>316</b>	<b>.636</b>	<b>794</b>	<b>5.5</b>	<b>194</b>	<b>253</b>	<b>151</b>	<b>119</b>	<b>2957</b>	<b>1502</b>	<b>10.4</b>

<b>JONES, STEPHEN (MGR.) 1992-93</b>																			
--------------------------------------	--	--	--	--	--	--	--	--	--	--	--	--	--	--	--	--	--	--	--

<b>KERNS, CASSIE</b>																			
2005-06	21	9	19	.474	0	0	.000	3	4	.750	14	0.7	6	2	3	3	108	21	1.0
2006-07	25	7	16	.438	0	0	.000	3	5	.600	15	0.6	7	8	3	1	129	17	0.7
2007-08	27	8	19	.421	0	0	.000	9	12	.750	14	0.5	9	7	4	1	118	25	0.9
<b>Totals</b>	<b>73</b>	<b>24</b>	<b>54</b>	<b>.444</b>	<b>0</b>	<b>0</b>	<b>.000</b>	<b>15</b>	<b>21</b>	<b>.714</b>	<b>43</b>	<b>0.6</b>	<b>22</b>	<b>17</b>	<b>10</b>	<b>5</b>	<b>355</b>	<b>63</b>	<b>0.9</b>

<b>KONOW, CHRIS (MGR.) 2003-06</b>																			
------------------------------------	--	--	--	--	--	--	--	--	--	--	--	--	--	--	--	--	--	--	--



<b>KOVACIK, MARY 1974-75</b>																			
<b>KRAUS, KATHY</b>																			
1992-93	8	1	8	.125	0	3	.000	0	0	.000	2	0.3	3	1	0	1	18	2	0.3

<b>KRAUSE, JENNIFER (MGR.) 1992-93</b>																			
--	--	--	--	--	--	--	--	--	--	--	--	--	--	--	--	--	--	--	--

<b>KRON, JENNIFER (MGR.) 1990-91, 1991-92</b>																			
---	--	--	--	--	--	--	--	--	--	--	--	--	--	--	--	--	--	--	--

<b>KULO, LORI</b>																			
1983-84	19	52	119	.437	-	-	-	27	34	.794	42	2.4	18	-	-	7	-	131	6.9
1984-85	27	89	200	.445	-	-	-	33	42	.786	80	3.0	20	-	-	11	-	209	7.7
1985-86	26	99	206	.481	-	-	-	21	28	.750	97	3.7	37	-	-	16	-	219	8.4
1986-87	18	34	57	.596	-	-	-	8	9	.889	27	1.5	9	10	5	3	179	76	4.2
<b>Totals</b>	<b>90</b>	<b>274</b>	<b>582</b>	<b>.471</b>	<b>-</b>	<b>-</b>	<b>-</b>	<b>89</b>	<b>113</b>	<b>.788</b>	<b>246</b>	<b>2.7</b>	<b>84</b>	<b>10</b>	<b>5</b>	<b>37</b>	<b>179</b>	<b>635</b>	<b>7.1</b>

<b>LAMB, KRISTIN</b>																			
1986-87	27	147	327	.450	-	-	-	58	74	.784	167	6.2	53	66	3	35	938	352	13.0
1987-88	22	93	220	.423	38	94	.404	12	17	.706	135	6.1	66	67	2	25	671	236	10.7
1988-89	30	131	283	.463	62	131	.473	32	48	.667	139	4.6	87	82	4	42	964	356	11.9
1989-90	31	110	280	.393	51	143	.357	29	39	.744	123	4.0	92	64	4	31	1075	300	9.7
<b>Totals</b>	<b>110</b>	<b>481</b>	<b>1110</b>	<b>.433</b>	<b>151</b>	<b>368</b>	<b>.410</b>	<b>131</b>	<b>178</b>	<b>.736</b>	<b>564</b>	<b>5.1</b>	<b>298</b>	<b>279</b>	<b>13</b>	<b>133</b>	<b>3648</b>	<b>1244</b>	<b>11.3</b>

<b>LAMMERS, JENNA</b>																			
1982-83	10	0	4	.000	-	-	-	0	0	.000	7	0.7	0	-	-	1	-	0	0.0

<b>LANGFIELD, MARY ELLEN</b>																			
1979-80	20	40	87	.460	-	-	-	35	42	.833	96	4.8	2	-	-	11	-	120	6.0
1980-81	27	79	172	.459	-	-	-	42	52	.808	118	4.4	9	-	-	10	-	200	7.4
<b>1981-82 INJURED</b>																			
1982-83	27	93	202	.460	-	-	-	62	75	.827	122	4.5	26	-	-	22	-	248	9.2
<b>Totals</b>	<b>74</b>	<b>212</b>	<b>461</b>	<b>.460</b>	<b>-</b>	<b>-</b>	<b>-</b>	<b>139</b>	<b>169</b>	<b>.822</b>	<b>336</b>	<b>4.5</b>	<b>37</b>	<b>-</b>	<b>-</b>	<b>43</b>	<b>-</b>	<b>568</b>	<b>7.7</b>

<b>LAW, HEIDI</b>																			
<b>1989-90 MEDICAL REDSHIRT</b>																			
1990-91	25	30	55	.545	0	0	.000	15											



**Renee Najarian '88**      **Linda Nardone '82**      **Sarah Northway '97**      **Meghan Pattyson '92**

**Diane Poletti '86**      **Shea Ralph '01**      **Christine Rigby '01**      **Jennifer Rizzotti '98**

Name	G	FG	FGA	PCT	3FG	3FGA	PCT	FT	FTA	PCT	REB	AVG	A	TO	B	S	MIN	PTS	AVG	
MADAY, JEAN (MGR.) 1991-93																				

MADL, DIANE																			
1986-87	7	0	0	.000	-	-	-	0	1	.000	0	0.0	3	3	0	1	20	0	0.0
1987-88	9	0	3	.000	0	0	.000	4	5	.800	7	0.8	3	3	0	3	48	4	0.4
<b>Totals</b>	<b>16</b>	<b>0</b>	<b>3</b>	<b>.000</b>	<b>-</b>	<b>-</b>	<b>-</b>	<b>4</b>	<b>6</b>	<b>.667</b>	<b>7</b>	<b>0.4</b>	<b>6</b>	<b>6</b>	<b>0</b>	<b>4</b>	<b>68</b>	<b>4</b>	<b>0.4</b>

MANSBERG, KERRI																			
1977-78	16	19	48	.396	-	-	-	7	13	.538	69	4.1	2	-	-	-	45	2.8	
1978-79	15	37	87	.425	-	-	-	21	30	.700	77	5.1	4	-	-	16	95	6.3	
1979-80	24	34	90	.378	-	-	-	29	41	.707	109	4.5	6	-	-	21	97	4.0	
1980-81	30	40	116	.345	-	-	-	38	55	.691	94	3.1	17	-	-	13	118	3.9	
<b>Totals</b>	<b>85</b>	<b>130</b>	<b>341</b>	<b>.381</b>	<b>-</b>	<b>-</b>	<b>-</b>	<b>95</b>	<b>139</b>	<b>.683</b>	<b>349</b>	<b>4.1</b>	<b>29</b>	<b>-</b>	<b>-</b>	<b>-</b>	<b>355</b>	<b>4.2</b>	

MARQUIS, BRENDA																			
1994-95	30	35	60	.583	0	0	.000	8	14	.571	37	1.2	3	9	3	5	154	78	2.6
1995-96	26	21	44	.477	0	0	.000	14	21	.667	34	1.3	2	17	0	4	160	56	2.2
<b>Totals</b>	<b>56</b>	<b>56</b>	<b>104</b>	<b>.539</b>	<b>0</b>	<b>0</b>	<b>.000</b>	<b>22</b>	<b>35</b>	<b>.629</b>	<b>71</b>	<b>1.3</b>	<b>5</b>	<b>26</b>	<b>3</b>	<b>9</b>	<b>314</b>	<b>134</b>	<b>2.4</b>

MARRON, STACEY																			
2001-02	33	14	29	.483	10	18	.556	7	9	.778	16	0.5	4	8	2	4	132	45	1.3
2002-03	28	12	23	.522	10	17	.588	5	6	.833	3	0.1	4	10	0	1	79	39	1.4
2003-04	22	5	19	.263	3	12	.250	5	6	.833	5	0.2	3	4	0	1	88	18	0.8
2004-05	22	6	31	.194	3	23	.130	5	6	.833	9	0.4	8	8	0	5	124	20	0.9
<b>Totals</b>	<b>105</b>	<b>37</b>	<b>102</b>	<b>.363</b>	<b>26</b>	<b>70</b>	<b>.371</b>	<b>22</b>	<b>27</b>	<b>.815</b>	<b>33</b>	<b>0.3</b>	<b>19</b>	<b>30</b>	<b>2</b>	<b>11</b>	<b>423</b>	<b>122</b>	<b>1.2</b>

MASSARO, CARLA																			
1974-75	8	17	-	-	-	-	-	3	5	.600	-	-	-	-	-	-	37	4.6	
1975-76	12	3	24	.125	-	-	-	5	11	.455	4	0.3	19	46	-	-	11	0.9	
<b>Totals</b>	<b>20</b>	<b>20</b>	<b>-</b>	<b>-</b>	<b>-</b>	<b>-</b>	<b>-</b>	<b>8</b>	<b>16</b>	<b>.500</b>	<b>-</b>	<b>-</b>	<b>-</b>	<b>-</b>	<b>-</b>	<b>-</b>	<b>48</b>	<b>2.7</b>	

MATLOCK, SHEA																			
1993-94	30	26	82	.317	3	12	.250	26	34	.765	53	1.8	36	35	0	16	361	81	2.7

MAYO, SUZANNE																			
1993-94	9	5	12	.417	0	0	.000	7	10	.700	11	1.2	1	7	0	2	47	17	1.9

McCARTHY, LISA																			
1978-79	11	8	31	.258	-	-	-	4	12	.333	8	0.7	4	25	1	10	-	20	1.8

McLAREN, KAILI																			
2006-07	35	53	133	.398	2	14	.143	18	22	.818	124	3.5	37	42	22	14	437	126	3.6
2007-08	35	72	130	.554	0	2	.000	29	40	.725	142	4.1	70	55	22	11	596	173	4.9
<b>Totals</b>	<b>70</b>	<b>125</b>	<b>263</b>	<b>.475</b>	<b>2</b>	<b>16</b>	<b>.125</b>	<b>47</b>	<b>62</b>	<b>.758</b>	<b>266</b>	<b>3.8</b>	<b>107</b>	<b>97</b>	<b>44</b>	<b>25</b>	<b>1033</b>	<b>299</b>	<b>4.3</b>

McLAUGHLIN, PATRICIA 1974-75																			

McNELLIS, JUDITH																			
1981-82	18	7	17	.411	-	-	-	4	7	.571	11	0.6	13	-	-	10	-	18	1.0
1982-83	23	10	38	.263	-	-	-	9	10	.900	14	0.6	29	-	-	10	-	29	1.3
<b>Totals</b>	<b>41</b>	<b>17</b>	<b>55</b>	<b>.309</b>	<b>-</b>	<b>-</b>	<b>-</b>	<b>13</b>	<b>17</b>	<b>.765</b>	<b>25</b>	<b>0.6</b>	<b>42</b>	<b>-</b>	<b>-</b>	<b>20</b>	<b>-</b>	<b>47</b>	<b>1.2</b>

MOLONY, LAURA 1974-75																			

MONTGOMERY, RENEE																			
2005-06	37	124	288	.431	39	116	.336	43	54	.796	80	2.2	123	81	3	63	1035	330	8.9
2006-07	36	177	403	.439	46	148	.311	79	113	.699	99	2.8	163	95	5	70	1136	479	13.3
2007-08	38	176	468	.376	70	225	.311	115	145	.793	97	2.6	147	75	7	72	1197	537	14.1
<b>Totals</b>	<b>111</b>	<b>477</b>	<b>1159</b>	<b>.412</b>	<b>155</b>	<b>489</b>	<b>.317</b>	<b>237</b>	<b>312</b>	<b>.760</b>	<b>276</b>	<b>2.5</b>	<b>433</b>	<b>251</b>	<b>15</b>	<b>205</b>	<b>3368</b>	<b>1346</b>	<b>12.1</b>

Name	G	FG	FGA	PCT	3FG	3FGA	PCT	FT	FTA	PCT	REB	AVG	A	TO	B	S	MIN	PTS	AVG
MOORE, JESSICA																			

2000-01 REDSHIRT																			
2001-02	39	81	139	.583	0	1	.000	50	86	.58	154	3.9	33	44	37	22	719	212	5.4
2002-03	38	167	275	.607	-	-	-	69	106	.651	225	5.9	52	81	38	30	982	403	10.6
2003-04	35	141	228	.618	1	2	.500	49	90	.544	247	7.1	41	57	27	30	882	332	9.5
2004-05	33	110	213	.516	1	7	.143	55	79	.696	208	6.3	41	42	23	22	771	276	8.4
<b>Totals</b>	<b>145</b>	<b>499</b>	<b>855</b>	<b>.584</b>	<b>2</b>	<b>10</b>	<b>.200</b>	<b>223</b>	<b>361</b>	<b>.618</b>	<b>834</b>	<b>5.8</b>	<b>167</b>	<b>224</b>	<b>125</b>	<b>104</b>	<b>3354</b>	<b>1223</b>	<b>8.4</b>

MOORE, MAYA																			
2007-08	38	275	506	.543	73	174	.420	55	74	.743	290	7.6	116	80	59	63	1121	678	17.8
<b>Totals</b>	<b>38</b>	<b>275</b>	<b>506</b>	<b>.543</b>	<b>73</b>	<b>174</b>	<b>.420</b>	<b>55</b>	<b>74</b>	<b>.743</b>	<b>290</b>	<b>7.6</b>	<b>116</b>	<b>80</b>	<b>59</b>	<b>63</b>	<b>1121</b>	<b>678</b>	<b>17.8</b>

MULLINS, KAREN																			
1975-76	15	97	241	.402	-	-	-	33	48	.688	41	2.7	56	142	-	-	-	227	15.1
1976-77	20	105	300	.350	-	-	-	42	49	.857	70	3.5	28	100	-	-	-	252	12.6
1977-78	19	83	231	.359	-	-	-	26	43	.590	61	3.2	39	77	-	-	-	192	10.2
1978-79	DNP																		
<b>Totals</b>	<b>54</b>	<b>285</b>	<b>772</b>	<b>.369</b>	<b>-</b>	<b>-</b>	<b>-</b>	<b>101</b>	<b>140</b>	<b>.721</b>	<b>172</b>	<b>3.2</b>	<b>123</b>	<b>319</b>	<b>-</b>	<b>-</b>	<b>-</b>	<b>671</b>	<b>12.4</b>

MURRAY, MARGARET 1984-85, 1985-86																			

NAJARIAN, RENEE																			
1986-87	21	108	231	.468	-	-	-	108	152	.711	189	9.0	22	46	7	23	652	324	15.4
1987-88	28	198	324	.611	2	4	.500	117	179	.654	305	10.9	48	56	19	38	888	515	18.4
<b>Totals</b>	<b>49</b>	<b>306</b>	<b>555</b>	<b>.551</b>	<b>-</b>	<b>-</b>	<b>-</b>	<b>225</b>	<b>331</b>	<b>.680</b>	<b>494</b>	<b>10.1</b>	<b>70</b>	<b>102</b>	<b>26</b>	<b>61</b>	<b>1540</b>	<b>839</b>	<b>17.1</b>

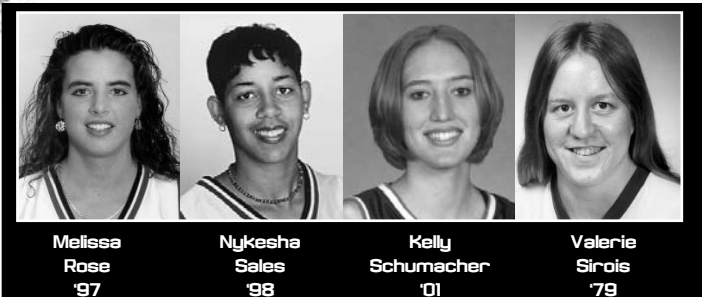
NARDONE, LINDA																			
1978-79	14	26	79	.329	-	-	-	13	18	.722	45	3.2	4	-	-	5	-	65	4.6
1979-80	23	109	290	.376	-	-	-	25	42	.592	74	3.2	34	-	-	36	-	243	10.6



# ALL-TIME LETTERWINNERS



PREVIEW  
COACHES  
THE HUSKIES  
REVIEW  
RECORDS  
HONORS  
HISTORY  
ALL-TIME RESULTS  
UDCONN



Name	G	FG	FGA	PCT	3FG	3FGA	PCT	FT	FTA	PCT	REB	AVG	A	TO	B	S	MIN	PTS	AVG
<b>PECHNIK, FRANCINE</b>																			
1981-82	7	3	4	.750	-	-	-	2	2	1.000	2	0.3	1	-	-	0	-	8	1.1

### PEYROZA, NATALIE (MGR.) 2003-06

### PEGG, CINDY 1974-75

### PINKINS, ARMATER 1974-75

### PISTEL, LORRAINE 1974-75

### PLEASANTS, ANGELA

1986-87	18	10	21	.476	-	-	-	8	11	.727	21	1.2	3	4	2	2	80	28	1.6
1987-88	2	0	0	.000	0	0	.000	0	0	.000	0	0.0	1	1	0	0	5	0	0.0
<b>Totals</b>	<b>20</b>	<b>10</b>	<b>21</b>	<b>.476</b>	<b>-</b>	<b>-</b>	<b>-</b>	<b>8</b>	<b>11</b>	<b>.727</b>	<b>21</b>	<b>1.1</b>	<b>4</b>	<b>5</b>	<b>2</b>	<b>2</b>	<b>85</b>	<b>28</b>	<b>1.4</b>

### POLETTI, DIANE

1982-83	20	12	28	.429	-	-	-	10	15	.667	27	1.4	4	-	-	6	-	34	1.7
1983-84	25	9	27	.333	-	-	-	14	23	.609	24	1.0	7	-	-	6	-	32	1.3
1984-85	22	9	22	.409	-	-	-	7	8	.875	6	0.3	15	-	-	8	-	25	1.1
1985-86	20	5	22	.227	-	-	-	8	15	.533	14	0.7	10	-	-	10	-	18	0.9
<b>Totals</b>	<b>87</b>	<b>35</b>	<b>99</b>	<b>.354</b>	<b>-</b>	<b>-</b>	<b>-</b>	<b>39</b>	<b>61</b>	<b>.639</b>	<b>71</b>	<b>0.8</b>	<b>36</b>	<b>-</b>	<b>-</b>	<b>30</b>	<b>-</b>	<b>109</b>	<b>1.3</b>

### RALPH, SHEA

1996-97	31	116	209	.555	7	30	.233	115	138	.833	140	4.5	59	65	3	35	676	354	11.4
<b>1997-98 MEDICAL REDSHIRT</b>																			
1998-99	30	164	277	.592	31	75	.413	144	180	.800	113	3.8	94	78	1	69	727	503	16.7
1999-00	37	184	295	.624	22	55	.400	139	170	.818	138	3.7	181	90	4	95	1051	529	14.9
2000-01	30	98	189	.519	21	63	.333	75	93	.806	119	4.0	122	57	3	53	710	292	9.7
<b>Totals</b>	<b>128</b>	<b>562</b>	<b>970</b>	<b>.579</b>	<b>81</b>	<b>223</b>	<b>.363</b>	<b>473</b>	<b>581</b>	<b>.814</b>	<b>510</b>	<b>4.0</b>	<b>456</b>	<b>290</b>	<b>11</b>	<b>252</b>	<b>3164</b>	<b>1678</b>	<b>13.1</b>

### REIF, LYNNE

1985-86	8	1	2	.500	-	-	-	0	0	.000	2	0.3	0	-	-	0	-	2	0.3
1986-87	11	1	8	.125	-	-	-	0	0	.000	2	0.2	2	4	0	0	26	2	0.2
1987-88	7	6	13	.462	1	1	1.000	2	5	.400	13	1.9	6	6	0	3	56	15	2.1
<b>Totals</b>	<b>26</b>	<b>8</b>	<b>23</b>	<b>.364</b>	<b>-</b>	<b>-</b>	<b>-</b>	<b>2</b>	<b>5</b>	<b>.400</b>	<b>17</b>	<b>0.7</b>	<b>8</b>	<b>-</b>	<b>-</b>	<b>3</b>	<b>-</b>	<b>19</b>	<b>0.7</b>

### RHONDA, KERRI (MGR.) 1992-93

### RIGBY, CHRISTINE

1999-00	24	29	43	.674	0	0	.000	7	11	.636	22	.9	3	15	6	3	98	65	2.7
2000-01	25	29	47	.617	0	0	.000	24	30	.800	32	1.3	8	9	4	1	153	82	3.3
<b>Totals</b>	<b>49</b>	<b>58</b>	<b>90</b>	<b>.644</b>	<b>0</b>	<b>0</b>	<b>.000</b>	<b>31</b>	<b>41</b>	<b>.756</b>	<b>54</b>	<b>1.1</b>	<b>11</b>	<b>24</b>	<b>10</b>	<b>4</b>	<b>251</b>	<b>147</b>	<b>3.0</b>

### RILEY, JENNIFER

1987-88	5	5	6	.833	0	0	.000	5	7	.714	10	2.0	2	6	0	0	38	15	3.0
---------	---	---	---	------	---	---	------	---	---	------	----	-----	---	---	---	---	----	----	-----

### RIZZOTTI, JENNIFER

1992-93	29	116	288	.403	53	142	.373	73	118	.619	125	4.3	104	116	1	60	1006	358	12.3
1993-94	33	110	239	.460	54	126	.429	52	78	.667	111	3.4	150	90	4	80	992	326	9.9
1994-95	35	156	308	.506	57	138	.413	69	94	.734	97	2.8	161	86	2	98	905	438	12.5
1995-96	38	148	335	.442	43	158	.272	79	112	.705	126	3.3	222	115	2	112	1230	418	11.0
<b>Totals</b>	<b>135</b>	<b>530</b>	<b>1170</b>	<b>.453</b>	<b>207</b>	<b>564</b>	<b>.367</b>	<b>273</b>	<b>402</b>	<b>.679</b>	<b>459</b>	<b>3.4</b>	<b>637</b>	<b>407</b>	<b>9</b>	<b>350</b>	<b>4133</b>	<b>1540</b>	<b>11.1</b>

### ROBBINS, HEIDI

1986-87	23	82	186	.441	-	-	-	48	62	.774	124	5.4	34	68	8	32	645	212	9.2
1987-88	28	57	132	.432	0	0	.000	28	35	.800	86	3.1	47	38	3	21	559	142	5.1
1988-89	30	94	211	.445	1	1	1.000	49	61	.803	132	4.4	59	57	9	34	839	238	7.9
1989-90	9	3	12	.250	0	0	.000	4	4	1.000	7	0.7	1	10	0	4	53	10	1.1
<b>Totals</b>	<b>90</b>	<b>236</b>	<b>541</b>	<b>.436</b>	<b>-</b>	<b>-</b>	<b>-</b>	<b>129</b>	<b>162</b>	<b>.796</b>	<b>349</b>	<b>3.9</b>	<b>141</b>	<b>173</b>	<b>20</b>	<b>91</b>	<b>2096</b>	<b>602</b>	<b>6.7</b>



Name	G	FG	FGA	PCT	3FG	3FGA	PCT	FT	FTA	PCT	REB	AVG	A	TO	B	S	MIN	PTS	AVG
<b>ROBBINS, KAREN 1974-75</b>																			
<b>ROBINSON, KIANA</b>																			
2003-04	18	10	31	.323	3	10	.300	7	11	.636	25	1.4	6	15	0	3	92	30	1.7

### ROPER, DAPHNE

1981-82	25	52	133	.391	-	-	-	29	50	.580	137	5.5	8	-	-	9	-	133	5.3
1982-83	16	66	138	.478	-	-	-	24	40	.600	131	8.2	7	-	-	10	-	156	9.8
<b>Totals</b>	<b>41</b>	<b>118</b>	<b>271</b>	<b>.435</b>	<b>-</b>	<b>-</b>	<b>-</b>	<b>53</b>	<b>90</b>	<b>.589</b>	<b>268</b>	<b>6.5</b>	<b>15</b>	<b>-</b>	<b>-</b>	<b>19</b>	<b>-</b>	<b>289</b>	<b>7.1</b>

### ROSE, MELISSA

1993-94	22	11	25	.440	1	1	1.000	2	5	.400	15	0.7	6	13	1	2	88	25	1.1
1994-95	31	20	64	.313	7	22	.318	11	18	.611	32	1.0	17	31	2	15	285	58	1.9
1995-96	20	10	26	.385	2	5	.400	7	10	.700	8	0.4	9	17	0	3	117	29	1.5
1996-97	31	15	43	.349	3	10	.300	7	9	.778	28	0.9	19	20	0	5	237	40	1.3
<b>Totals</b>	<b>104</b>	<b>56</b>	<b>158</b>	<b>.354</b>	<b>13</b>	<b>38</b>	<b>.342</b>	<b>27</b>	<b>42</b>	<b>.643</b>	<b>83</b>	<b>0.8</b>	<b>51</b>	<b>81</b>	<b>3</b>	<b>25</b>	<b>727</b>	<b>152</b>	<b>1.5</b>

### ROSS, KRISTA (MGR.) 2003-06

### ROTHFUSS, PAMELA

1988-89	15	3	10	.300	0	0	.000	4	10	.400	10	0.7	3	5	0	2	41	10	0.7
1989-90	10	1	3	.333	0	0	.000	0	1	.000	3	0.3	2	4	0	0	24	2	0.2
1990-91	15	5	11	.455	0	0	.000	2	3	.667	9	0.6	7	8	0	2	59	12	0.8
1991-92	21	4	21	.190	0	1	.000	7	12	.583	12	0.6	13	13	0	3	118	15	0.7
<b>Totals</b>	<b>61</b>	<b>13</b>	<b>45</b>	<b>.289</b>	<b>0</b>	<b>1</b>	<b>.000</b>	<b>13</b>	<b>26</b>	<b>.500</b>	<b>34</b>	<b>0.6</b>	<b>25</b>	<b>30</b>	<b>0</b>	<b>7</b>	<b>242</b>	<b>39</b>	<b>0.6</b>

### RYBA, GINA

1975-76	11	2	11	.182	-	-	-	0	0	.000	21	1.9	0	12	-	-	-	4	0.4
1976-77	13	4	20	.200	-	-	-	2	8	.250	21	1.6	0	11	-	-	-	10	0.8
<b>Totals</b>	<b>24</b>	<b>6</b>	<b>31</b>	<b>.188</b>	<b>-</b>	<b>-</b>	<b>-</b>	<b>2</b>	<b>8</b>	<b>.250</b>	<b>42</b>	<b>1.8</b>	<b>0</b>	<b>23</b>	<b>-</b>	<b>-</b>	<b>-</b>	<b>14</b>	<b>0.6</b>

### SADIQ, RASHIDAT

2004-05	26	22	50	.440	0	1	.000	16	20	.800	32	1.2	5	10	9	4	153	60	2.3
<b>Totals</b>	<b>26</b>	<b>22</b>	<b>50</b>	<b>.440</b>	<b>0</b>	<b>1</b>	<b>.000</b>	<b>16</b>	<b>20</b>	<b>.800</b>	<b>32</b>	<b>1.2</b>	<b>5</b>	<b>10</b>	<b>9</b>	<b>4</b>	<b>153</b>	<b>60</b>	<b>2.3</b>

### SALES, NYKESHA

1994-95	35	159	294	.541	35	81	.432	45	77	.584	162	4.6	73	61	11	102	753	398	11.4
1995-96	38	237	459	.516	30	89	.337	92	131	.702	168								





Name	G	FG	FGA	PCT	3FG	3FGA	PCT	FT	FTA	PCT	REB	AVG	A	TO	B	S	MIN	PTS	AVG
<b>SWEET, TAMMI</b>																			
1983-84	12	0	5	.000	-	-	-	2	2	1.000	9	0.8	0	-	-	0	-	2	0.2
1984-85	27	71	161	.441	-	-	-	5	10	.500	53	2.0	79	-	-	32	-	147	5.4
1985-86	27	153	342	.447	-	-	-	47	60	.783	92	3.4	101	-	-	47	-	353	13.1
1986-87	27	135	316	.427	-	-	-	55	64	.859	80	3.0	119	-	-	54	-	325	12.0
<b>Totals</b>	<b>93</b>	<b>359</b>	<b>824</b>	<b>.436</b>	<b>-</b>	<b>-</b>	<b>-</b>	<b>109</b>	<b>136</b>	<b>.801</b>	<b>234</b>	<b>2.5</b>	<b>299</b>	<b>-</b>	<b>-</b>	<b>133</b>	<b>-</b>	<b>827</b>	<b>8.9</b>

Name	G	FG	FGA	PCT	3FG	3FGA	PCT	FT	FTA	PCT	REB	AVG	A	TO	B	S	MIN	PTS	AVG
<b>TAURASI, DIANA</b>																			
2000-01	33	127	286	.444	71	184	.386	36	41	.878	106	3.2	109	72	29	39	791	361	10.9
2001-02	39	200	405	.494	92	209	.440	72	87	.828	158	4.1	208	83	46	50	1131	564	14.6
2002-03	37	237	498	.476	70	200	.350	119	146	.815	225	6.1	161	115	45	32	1181	663	17.9
2003-04	35	197	432	.456	85	218	.390	89	112	.795	139	4.0	170	83	27	53	1115	568	16.2
<b>Totals</b>	<b>144</b>	<b>761</b>	<b>1621</b>	<b>.469</b>	<b>318</b>	<b>811</b>	<b>.392</b>	<b>316</b>	<b>386</b>	<b>.819</b>	<b>628</b>	<b>4.4</b>	<b>648</b>	<b>353</b>	<b>147</b>	<b>174</b>	<b>4218</b>	<b>2156</b>	<b>15.0</b>

Name	G	FG	FGA	PCT	3FG	3FGA	PCT	FT	FTA	PCT	REB	AVG	A	TO	B	S	MIN	PTS	AVG
<b>THOMAS, MEL</b>																			
2004-05	29	54	136	.397	26	84	.310	28	42	.667	56	1.9	54	31	4	20	526	162	5.6
2005-06	35	135	276	.489	76	177	.429	46	59	.780	83	2.4	66	40	6	53	1043	392	11.2
2006-07	36	120	291	.412	87	205	.424	51	56	.911	97	2.7	63	29	4	24	1146	378	10.5
2007-08	16	57	134	.425	35	89	.393	17	17	1.000	47	2.9	44	16	0	15	457	166	10.4
<b>Totals</b>	<b>116</b>	<b>366</b>	<b>837</b>	<b>.437</b>	<b>224</b>	<b>555</b>	<b>.404</b>	<b>142</b>	<b>174</b>	<b>.816</b>	<b>283</b>	<b>2.4</b>	<b>227</b>	<b>116</b>	<b>14</b>	<b>112</b>	<b>3172</b>	<b>1098</b>	<b>9.5</b>

Name	G	FG	FGA	PCT	3FG	3FGA	PCT	FT	FTA	PCT	REB	AVG	A	TO	B	S	MIN	PTS	AVG
<b>TRUFAN, DEBORAH</b>																			
1975-76	8	6	29	.207	-	-	-	0	0	.000	6	0.7	2	-	-	-	-	12	1.5

Name	G	FG	FGA	PCT	3FG	3FGA	PCT	FT	FTA	PCT	REB	AVG	A	TO	B	S	MIN	PTS	AVG
<b>TURNER, BARBARA</b>																			
2002-03	38	134	269	.489	9	30	.300	102	149	.685	220	5.8	45	75	18	22	795	379	10.0
2003-04	35	177	330	.536	19	47	.404	105	158	.665	167	4.8	105	71	14	30	933	478	13.7
2004-05	29	126	241	.523	5	21	.238	63	95	.663	140	4.8	44	55	22	24	638	320	11.0
2005-06	36	170	312	.545	12	40	.300	100	140	.714	270	7.5	85	63	28	35	973	452	12.6
<b>Totals</b>	<b>138</b>	<b>607</b>	<b>1152</b>	<b>.527</b>	<b>45</b>	<b>138</b>	<b>.326</b>	<b>370</b>	<b>542</b>	<b>.683</b>	<b>797</b>	<b>5.8</b>	<b>279</b>	<b>264</b>	<b>82</b>	<b>111</b>	<b>3339</b>	<b>1629</b>	<b>11.8</b>

Name	G	FG	FGA	PCT	3FG	3FGA	PCT	FT	FTA	PCT	REB	AVG	A	TO	B	S	MIN	PTS	AVG
<b>TYL, CAROLYN</b>																			
1975-76	16	32	119	.269	-	-	-	8	15	.533	43	2.7	4	-	-	-	-	72	4.5

Name	G	FG	FGA	PCT	3FG	3FGA	PCT	FT	FTA	PCT	REB	AVG	A	TO	B	S	MIN	PTS	AVG
<b>VALLEY, ASHLEY</b>																			
2001-02	34	28	68	.412	10	28	.357	33	43	.767	59	1.7	39	30	4	11	132	99	2.9
2002-03	31	14	38	.368	7	20	.350	25	34	.735	28	1.0	25	22	2	11	221	60	1.9
2003-04	26	23	54	.426	6	20	.300	27	40	.675	36	1.4	37	23	1	15	249	79	3.0
2004-05	33	31	82	.378	17	50	.340	11	15	.733	48	1.5	59	31	4	21	486	90	2.7
<b>Totals</b>	<b>124</b>	<b>96</b>	<b>242</b>	<b>.397</b>	<b>40</b>	<b>118</b>	<b>.339</b>	<b>96</b>	<b>132</b>	<b>.727</b>	<b>171</b>	<b>1.4</b>	<b>160</b>	<b>106</b>	<b>11</b>	<b>58</b>	<b>1088</b>	<b>328</b>	<b>2.6</b>

Name	G	FG	FGA	PCT	3FG	3FGA	PCT	FT	FTA	PCT	REB	AVG	A	TO	B	S	MIN	PTS	AVG
<b>VALLEY, MORGAN</b>																			
2000-01	29	33	84	.393	10	26	.385	12	14	.857	56	1.9	22	25	4	18	300	88	3.0
2001-02	16	19	43	.442	7	20	.350	13	17	.765	41	2.6	14	17	2	6	207	58	3.6
2002-03	34	29	69	.420	5	17	.294	13	16	.813	90	2.6	35	22	5	16	388	76	2.2
2003-04	29	24	48	.500	3	7	.429	9	16	.563	76	2.6	38	22	7	19	338	60	2.1
<b>Totals</b>	<b>108</b>	<b>105</b>	<b>244</b>	<b>.430</b>	<b>25</b>	<b>70</b>	<b>.357</b>	<b>47</b>	<b>63</b>	<b>.746</b>	<b>263</b>	<b>2.4</b>	<b>109</b>	<b>86</b>	<b>18</b>	<b>59</b>	<b>1233</b>	<b>282</b>	<b>2.6</b>

Name	G	FG	FGA	PCT	3FG	3FGA	PCT	FT	FTA	PCT	REB	AVG	A	TO	B	S	MIN	PTS	AVG
<b>VINSON, ELIZABETH</b>																			
1976-77	20	29	83	.349	-	-	-	22	42	.524	75	3.8	15	71	-	-	-	80	4.0
1977-78	20	48	129	.372	-	-	-	14	34	.412	93	4.7	19	54	-	-	-	110	5.5
1978-79	20	38	109	.344	-	-	-	25	45	.511	99	5.0	15	58	3	30	-	97	4.9
1979-80	24	43	102	.422	-	-	-	13	38	.342	81	3.4	41	-	-	27	-	99	4.1
<b>Totals</b>	<b>84</b>	<b>158</b>	<b>423</b>	<b>.374</b>	<b>-</b>	<b>-</b>	<b>-</b>	<b>74</b>	<b>159</b>	<b>.465</b>	<b>348</b>	<b>4.1</b>	<b>90</b>	<b>-</b>	<b>-</b>	<b>-</b>	<b>-</b>	<b>386</b>	<b>4.6</b>

Name	G	FG	FGA	PCT	3FG	3FGA	PCT	FT	FTA	PCT	REB	AVG	A	TO	B	S	MIN	PTS	AVG
<b>WACHTELHAUSEN, ROBERTA</b>																			
1976-77	18	29	110	.264	-	-	-	13	32	.406	123	6.8	7	32	-	-	-	71	3.9
1977-78	20	56	154	.364	-	-	-	23	37	.622	177	8.9	12	44	-	-	-	135	6.8
1978-79	21	26	108	.241	-	-	-	7	26	.269	130	6.2	14	32	16	36	-	61	2.9
<b>Totals</b>	<b>59</b>	<b>111</b>	<b>372</b>	<b>.298</b>	<b>-</b>	<b>-</b>	<b>-</b>	<b>43</b>	<b>95</b>	<b>.453</b>	<b>430</b>	<b>7.3</b>	<b>33</b>	<b>108</b>	<b>-</b>	<b>-</b>	<b>-</b>	<b>267</b>	<b>4.5</b>

Name	G	FG	FGA	PCT	3FG	3FGA	PCT	FT	FTA	PCT	REB	AVG	A	TO	B	S	MIN	PTS	AVG
<b>WALDRON, MARGARET 1974-75</b>																			

Name	G	FG	FGA	PCT	3FG	3FGA	PCT	FT	FTA	PCT	REB	AVG	A	TO	B	S	MIN	PTS	AVG
<b>WALSH, PEGGY</b>																			
1982-83	25	93	210	.443	-	-	-	41	95	.432	184	7.4	26	-	-	27	-	227	9.1
1983-84	29	134	273	.491	-	-	-	61	129	.473	213	7.3	28	-	-	23	-	329	11.3
1984-85	27	154	326	.472	-	-	-	97	159	.610	203	7.5	46	-	-	35	-	405	15.0
1985-86	27	173	309	.559	-	-	-	106	186	.570	337	12.5	47	-	-	43	-	452	16.7
<b>Totals</b>	<b>108</b>	<b>554</b>	<b>1118</b>	<b>.496</b>	<b>-</b>	<b>-</b>	<b>-</b>	<b>305</b>	<b>569</b>	<b>.536</b>	<b>937</b>	<b>8.7</b>	<b>147</b>	<b>-</b>	<b>-</b>	<b>128</b>	<b>-</b>	<b>1413</b>	<b>13.1</b>

Name	G	FG	FGA	PCT	3FG	3FGA	PCT	FT	FTA	PCT	REB	AVG	A	TO	B	S	MIN	PTS	AVG
<b>SCHUMACHER, KELLY</b>																			
1997-98	35	70	117	.598	0	0	.000	37	70	.52									



# ALL-TIME LETTERWINNERS



PREVIEW COACHES THE HUSKIES REVIEW RECORDS HONORS ALL-TIME RESULTS UCONN

Name	G	FG	FGA	PCT	3FG	3FGA	PCT	FT	FTA	PCT	REB	AVG	A	TO	B	S	MIN	PTS	AVG
<b>WALTERS, KEIRSTEN</b>																			
1998-99	29	30	81	.370	25	68	.368	17	23	.739	38	1.3	85	46	4	52	601	102	3.5
1999-00 MEDICAL REDSHIRT																			
2000-01 MEDICAL REDSHIRT																			
<b>Totals</b>	<b>29</b>	<b>30</b>	<b>81</b>	<b>.370</b>	<b>25</b>	<b>68</b>	<b>.368</b>	<b>17</b>	<b>23</b>	<b>.739</b>	<b>38</b>	<b>1.3</b>	<b>85</b>	<b>46</b>	<b>4</b>	<b>52</b>	<b>601</b>	<b>102</b>	<b>3.5</b>

<b>WARD, WANDA</b>																			
1977-78	17	11	52	.212	-	-	-	18	29	.621	20	1.2	27	-	-	-	-	40	2.4
1978-79	2	1	2	.500	-	-	-	1	2	.500	1	0.5	2	4	0	0	-	3	1.5
<b>Totals</b>	<b>19</b>	<b>12</b>	<b>54</b>	<b>.222</b>	<b>-</b>	<b>-</b>	<b>-</b>	<b>19</b>	<b>31</b>	<b>.613</b>	<b>21</b>	<b>1.1</b>	<b>29</b>	<b>-</b>	<b>-</b>	<b>-</b>	<b>-</b>	<b>43</b>	<b>2.3</b>

<b>WAUGH, LESLIE</b>																			
1979-80	14	20	40	.500	-	-	-	4	14	.286	29	2.5	10	-	-	3	-	44	3.1
1980-81	6	1	12	.083	-	-	-	3	4	.750	10	1.7	1	-	-	2	-	5	0.8
<b>Totals</b>	<b>20</b>	<b>21</b>	<b>52</b>	<b>.404</b>	<b>-</b>	<b>-</b>	<b>-</b>	<b>7</b>	<b>18</b>	<b>.389</b>	<b>39</b>	<b>2.0</b>	<b>11</b>	<b>-</b>	<b>-</b>	<b>5</b>	<b>-</b>	<b>49</b>	<b>2.5</b>

<b>WEBBER, PAM</b>																			
1991-92	34	92	215	.428	41	106	.387	63	80	.788	83	2.4	123	120	5	51	1054	288	8.5
1992-93	29	57	183	.311	30	104	.288	35	47	.745	86	3.0	131	104	3	41	999	179	6.2
1993-94	33	50	138	.362	25	78	.321	47	61	.770	94	2.8	148	75	4	40	951	172	5.2
1994-95	35	49	118	.415	27	76	.355	36	52	.692	90	2.6	144	65	2	20	847	161	4.6
<b>Totals</b>	<b>131</b>	<b>248</b>	<b>654</b>	<b>.379</b>	<b>123</b>	<b>364</b>	<b>.338</b>	<b>181</b>	<b>240</b>	<b>.754</b>	<b>353</b>	<b>2.7</b>	<b>546</b>	<b>364</b>	<b>14</b>	<b>152</b>	<b>3851</b>	<b>800</b>	<b>6.1</b>

<b>WEIDEMAN, JENNIFER</b>																			
1983-84	27	39	88	.443	-	-	-	23	42	.548	106	3.9	11	-	-	15	-	101	3.7
1984-85	27	23	61	.377	-	-	-	11	17	.647	62	2.3	9	-	-	12	-	57	2.1
1985-86	27	52	123	.423	-	-	-	43	67	.642	129	4.8	25	-	-	8	-	147	5.4
1986-87	27	60	125	.480	-	-	-	25	43	.581	119	4.4	15	50	25	11	663	145	5.4
<b>Totals</b>	<b>108</b>	<b>174</b>	<b>397</b>	<b>.438</b>	<b>-</b>	<b>-</b>	<b>-</b>	<b>102</b>	<b>169</b>	<b>.604</b>	<b>416</b>	<b>3.9</b>	<b>60</b>	<b>-</b>	<b>-</b>	<b>46</b>	<b>-</b>	<b>450</b>	<b>4.2</b>

<b>WETZEL, STACEY</b>																			
1988-89	15	2	5	.400	0	0	.000	8	12	.667	6	0.4	0	6	1	0	43	12	0.8
1989-90	19	6	23	.261	0	0	.000	9	17	.529	39	2.1	3	6	2	0	95	21	1.1
1990-91	27	29	55	.527	0	0	.000	19	27	.704	86	3.2	6	30	8	7	321	77	2.9
1991-92	34	70	116	.603	0	0	.000	47	65	.723	103	3.0	15	45	8	6	454	187	5.5
<b>Totals</b>	<b>95</b>	<b>107</b>	<b>199</b>	<b>.538</b>	<b>0</b>	<b>0</b>	<b>.000</b>	<b>83</b>	<b>121</b>	<b>.686</b>	<b>234</b>	<b>2.5</b>	<b>24</b>	<b>87</b>	<b>19</b>	<b>13</b>	<b>913</b>	<b>297</b>	<b>3.1</b>

<b>WIDMER, JOAN</b>																			
1977-78	3	1	8	.143	-	-	-	0	0	.000	2	0.7	0	-	-	-	-	2	0.7

**WILDERMUTH, ANNIE (MGR.) 2004-07**

<b>WILLIAMS, RITA</b>																			
1995-96	30	24	63	.381	4	19	.211	27	52	.519	48	1.6	24	58	1	33	344	79	2.6
1996-97	34	79	223	.354	12	60	.200	74	134	.552	125	3.7	113	108	7	107	1029	244	7.2
1997-98	37	111	272	.408	53	150	.353	101	150	.673	123	3.3	149	95	3	108	1193	376	10.2
<b>Totals</b>	<b>101</b>	<b>214</b>	<b>558</b>	<b>.384</b>	<b>69</b>	<b>229</b>	<b>.301</b>	<b>202</b>	<b>336</b>	<b>.601</b>	<b>296</b>	<b>2.9</b>	<b>286</b>	<b>261</b>	<b>11</b>	<b>248</b>	<b>2566</b>	<b>699</b>	<b>6.9</b>

<b>WILLIAMS, TAHIRAH</b>																			
2005-06	21	14	25	.560	0	0	.000	9	15	.600	14	0.7	1	6	3	7	97	37	1.8
2006-07	28	20	36	.556	0	2	.000	10	15	.667	34	1.2	15	13	4	9	216	50	1.8
2007-08	27	16	33	.485	1	1	1.000	17	23	.739	38	1.4	5	15	2	5	162	50	1.9
<b>Totals</b>	<b>76</b>	<b>50</b>	<b>94</b>	<b>.532</b>	<b>1</b>	<b>3</b>	<b>.333</b>	<b>36</b>	<b>53</b>	<b>.679</b>	<b>86</b>	<b>1.1</b>	<b>21</b>	<b>34</b>	<b>9</b>	<b>21</b>	<b>475</b>	<b>137</b>	<b>1.8</b>

<b>WILLIAMS, TAMIKA</b>																			
1998-99	33	173	263	.658	0	2	.000	98	151	.649	226	6.8	27	66	12	50	738	444	13.5
1999-00	31	115	161	.714	0	0	.000	51	71	.718	111	3.6	24	65	8	40	509	281	9.1
2000-01	33	132	174	.759	0	1	.000	60	97	.619	186	5.6	25	54	7	45	656	324	9.8
2001-02	35	140	199	.704	0	0	.000	73	112	.652	240	6.9	44	47	16	52	766	353	10.1
<b>Totals</b>	<b>132</b>	<b>560</b>	<b>797</b>	<b>.703</b>	<b>0</b>	<b>3</b>	<b>.000</b>	<b>282</b>	<b>431</b>	<b>.654</b>	<b>763</b>	<b>5.8</b>	<b>120</b>	<b>232</b>	<b>43</b>	<b>187</b>	<b>2669</b>	<b>1402</b>	<b>10.6</b>

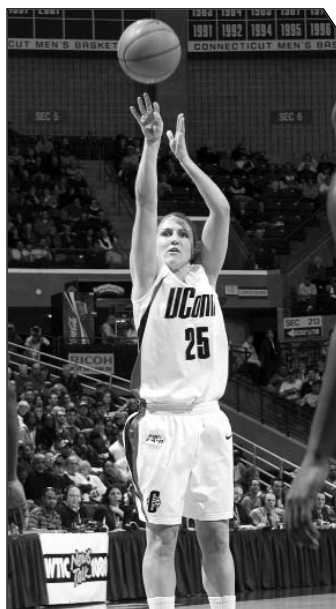
<b>WOLFF, NICOLE</b>																			
2002-03	10	20	59	.339	9	20	.450	13	18	.722	44	4.4	24	19	8	10	258	62	6.2
2003-04	3	4	11	.364	0	1	.000	1	2	.500	8	2.7	2	1	3	0	41	9	3.0
2004-05	32	48	111	.432	14	42	.333	17	27	.630	71	2.2	66	35	23	22	644	127	4.0
2005-06	30	24	70	.343	7	31	.226	14	20	.700	33	1.1	31	25	2	13	329	69	2.3
<b>Totals</b>	<b>75</b>	<b>96</b>	<b>251</b>	<b>.382</b>	<b>30</b>	<b>94</b>	<b>.319</b>	<b>45</b>	<b>67</b>	<b>.672</b>	<b>156</b>	<b>2.1</b>	<b>123</b>	<b>80</b>	<b>36</b>	<b>45</b>	<b>1272</b>	<b>267</b>	<b>3.6</b>

<b>WOLTERS, KARA</b>																			
1993-94	33	168	264	.636	0	0	.000	29	57	.509	159	4.8	9	54	75	12	511	365	11.1
1994-95	33	222	354	.627	0	0	.000	59	89	.663	204	6.2	38	60	94	13	761	503	15.2
1995-96	37	306	486	.630	0	0	.000	82	142	.577	291	7.9	37	103	105	14	978	694	18.8
1996-97	34	251	403	.623	0	0	.000	77	135	.570	273	8.0	46	78	96	12	894	579	17.0
<b>Totals</b>	<b>137</b>	<b>947</b>	<b>1507</b>	<b>.628</b>	<b>0</b>	<b>0</b>	<b>.000</b>	<b>247</b>	<b>423</b>	<b>.584</b>	<b>927</b>	<b>6.8</b>	<b>130</b>	<b>295</b>	<b>370</b>	<b>51</b>	<b>3144</b>	<b>2141</b>	<b>15.6</b>

<b>WOODALL, NICOLE</b>																			
1990-91	11	1	7	.143	0	2	.000	2	3	.667	8	0.7	5	9	0	1	36	4	0.4
1991-92	20	6	9	.667	0	0	.000	9	17	.529	10	0.5	6	14	0	3	90	21	1.0
1992-93	20	2	9	.222	0	0	.000	1	3	.333	6	0.3	13	18	1	8	121	5	0.3
<b>Totals</b>	<b>51</b>	<b>9</b>	<b>25</b>	<b>.360</b>	<b>0</b>	<b>2</b>	<b>.000</b>	<b>12</b>	<b>23</b>	<b>.522</b>	<b>24</b>	<b>0.5</b>	<b>24</b>	<b>41</b>	<b>1</b>	<b>12</b>	<b>247</b>	<b>30</b>	<b>0.6</b>

- STATISTICS INCOMPLETE FOR CATEGORY

NOTE: THREE-POINT SHOT STATISTICS BEGAN NCAA PLAY IN 1987-88.



MEL THOMAS (LEFT) AND KETURIA SWANNER (RIGHT)



JENNIFER RIZZOTTI (LEFT) AND JANELLE ELLIOTT (RIGHT)

**This is UConn...** In 2004, there was a 50 percent increase of beds in the Emergency Department of the UConn Health Center at the John Dempsey Hospital.



**Svetlana Abrosimova '01** – UConn's only three-time Kodak All-American, Svetlana began her professional basketball career in 2001 when she was selected seventh overall in the first round of the WNBA draft by the Minnesota Lynx. She returned to Connecticut to complete work on her business degree in the fall of 2001, and served as a student-assistant coach with the Huskies. She currently is a member of the Connecticut Sun and played for the Russian Olympic Team and earned a bronze medal at the 2008 Summer Games in Beijing.

**Debbie (Baer) Fiske '92** – A fitness management major. Debbie is an associate athletic director at St. Joseph's College in West Hartford, Conn. Debbie and her husband, Tor, have a son Traejan and a daughter Skylar.



DEBBIE AND TOR FISKE

**Anna Bagley '65** – Currently a rural mail carrier and works for the US Postal Service. She has three children and resides in Madison, Conn.

**Kathy Bantley '90** – Earned her law degree from Western New England College in Springfield, Mass., in May of 1995. Kathy is an assistant professor of criminology at Central Connecticut State University.

**Kerry (Bascom) Poliquin '91** – A Kodak All-American in 1991 and three-time BIG EAST Player of the Year, Kerry was a two-year professional basketball player in Spain and France. She was the first UConn player to play professionally in Europe. She currently resides in Exeter, N.H., where she is a case manager for Community Partners.

**Nancy (Bardini) Mamunes '74** – Nancy is a physical education teacher in Ellington, Conn., where she resides with her husband, Anthony, and their son, Michael.

**Ashley Battle '04** – Graduated with a liberal arts degree. Ashley is currently playing in the WNBA for the N.Y. Liberty.

**Carla Berube '97** – Carla went on to play two years of professional basketball with the New England Blizzard. She is currently a head coach at Tufts University.

**Kim (Better) Thompson '96** – Kim completed her undergraduate degree in computer science engineering and currently resides in Upper Marlboro, Md., with her husband Roderick and daughter Isabella.

**Sue Bird '02** – With her communication science degree, she was UConn's first ever No. 1 draft pick when she was selected first overall by the Seattle Storm in the 2002 WNBA Draft. She was the 2001-02 consensus National Player of the Year. In 2004 and 2008, Bird was a member of the U.S. Olympic Teams which captured the gold medal.



SUE BIRD

**Cathy Bochain '83** – A graduate of UConn's prestigious school of Pharmacy, she is employed by CVS Pharmacy and resides in Hampton, Conn.

**Krista Blomquist-Hall '88** – A business major, Krista is currently an independent distributor for Xango. She and her husband, Steve, reside in Bradenton, Fla., with their two children.



KRISTA BLOMQUIST-HALL, HUSBAND STEVE AND DAUGHTERS KENDRA & SARA

**Tonya (Boone) Holmes '94** – A psychology major, Tonya is a manager of customer marketing for MBNA America. She and her husband Kelvin have two children and reside in New Jersey.

**Rosemary (Borsuk) Best '80** – A graduate from UConn's prestigious school of pharmacy. She is the staff pharmacist at Manchester Memorial Hospital. Rosemary resides in Storrs, Conn., with her husband Charles and their two children Kristin and Mark.

**Jill Brumbaugh '88** – A nutrition major, Jill currently is a district manager for United Group Association. She resides in Highlands Ranch, Colo.

**Swin Cash '02** – She graduated with a communication science degree and was drafted No. 2 overall by the Detroit Shock in the 2002 WNBA Draft. She was a 2002 Kodak All-American. A member of the 2003 Detroit Shock, which won the WNBA Championship. In 2004, Cash was a member of the U.S. Olympic Team which captured the gold medal.



SWIN CASH

**Phyllis Clapis '83** – A physical therapy major, Phyllis is an Assistant Physical Therapy Professor at American International College and resides in Hadley, Mass.

**Maria Conlon '04** – Graduated with a liberal arts degree. Maria is a top producer with Barnum Financial Group as an investment advisor. She also has her real estate license and is a radio commentator for the Fairfield University women's basketball games.

**Willnett Crockett '06** – A member of the 2003 and 2004 NCAA National Championship teams. Willnett is a liberal arts major and played basketball overseas in Lithuania in 2006.

**Marci Czel '01** – A member of the 2000 National Championship team and a communication science major, Marci currently works and resides in New York City.

**Dr. Leigh Curl '85** – Former First Team Academic All-American, BIG EAST Scholar-Athlete of the Year, and an NCAA Post-Graduate Scholarship recipient, Leigh is a 1989 graduate of John Hopkins Medical School. She is currently the head team physician for the NFL's Baltimore Ravens and is an orthopedic surgeon at John Hopkins Department of Orthopedic Surgery.

**This is UConn...** Ruthann and Rebecca Lobo created a scholarship in their names for the UConn School of Allied Health in October of 2001.



# WHERE ARE THEY NOW?



PREVIEW

COACHES

THE HUSKIES

REVIEW

RECORDS

HONORS

HISTORY

ALL-TIME RESULTS

UConn

**Wendy Davis '92** – Former BIG EAST Scholar Athlete of the Year and NCAA Post-Graduate Scholarship recipient, Wendy completed her master's degree in education at Connecticut and served as an assistant coach for the 1993-94 season. She is currently the head women's basketball coach at Trinity College after a previous stint at Western New England College.

**Judith Dayner '77** – Judith is self employed as an attorney. She resides in Glastonbury, Conn., with her two children.

**Nancy Dobie '65** – Nancy is a retired physical education teacher. She resides in Bristol, R.I.

**Evy Doerfler '87** – A business marketing major at Connecticut, Evy is an account manager for Proctor & Gamble and resides in Gribsonia, Pa.

**Amy (Duran) Heinzelmann '99** – Captain of the 1998-99 team. Amy lives in Maryland with her husband and two children.

**Jamelle Elliott '96** – Former All-BIG EAST and '95 NCAA Final Four All-Tournament Team standout, Jamelle is entering her eighth season as an assistant coach for the Huskies. She completed her master's degree in sports management at UConn in 1997.

**Audrey Epstein-Polinsky '86** – After receiving her law degree from Hofstra University, she passed the New York and Connecticut Bar in 1991. She is currently a financial representative with the Northwestern Mutual Financial Network in New York City. Resides in Hewlett, N.Y., with her husband Elliott and their two sons, Ike and Gabe.



AUDREY EPSTEIN-POLINSKI AND SON GABRIEL

**Kathy (Ferrier) Gibson '93** – A natural resource management major, Kathy works for Connecticut Light and Power as an Arborist. She resides in Bristol, Conn., with her husband Mark and two children.

**Evelyn (Fish) Rowley '49** – Played when basketball was a club team. Evelyn works for Eldridge Sr. Housing and has three children: Jed, Eileen and Corinne.



EVELYN (FISH) ROWLEY AND JONATHAN

**Margaret (Flynn) Capehart '75** – Margaret is a physical therapist in Holden, Maine. She and her husband, Gary, reside in Bangor with their four children: Joseph, Zachary, Emily and Maureen.

**Elizabeth Foy '79** – An agriculture major, Betsy got her master of science education in 1988 and currently teaches seventh-grade science at Griswold Middle School.

**Courtney Gaine '00** – Graduated from the School of Allied Health with a degree in dietetics. She earned her Ph.D. in nutritional sciences at UConn. She is employed by East Carolina University and resides in Winterville, N.C.

**Beverly (Freaner) Goulet '67** – Beverly is currently the Director of Social Services for the city of Norwich. She resides in Norwich and has a son Tim and a daughter Lara.



BEVERLY (FREANER) GOULET WITH DAUGHTER LARA AND GRANDAUGHTER WHITNEY

**Sandy Gavin-Ashmore '84** – A physical therapy major at UConn, Sandy is a physical therapist in Chesterfield, Mo., where she resides with her husband and their children, Kelly, Sarah and Ryan.

**Chris Gedney '81 Lt Col USAF** – Awarded the first UConn women's basketball scholarship, Chris is a retired Air Force Lt. Colonel with 22 years of active duty. She is currently a General Defense Intelligence Program Evaluation Management Consultant to the Department of Defense. She resides in Alexandria, Va.



LT. COL. CHRIS GEDNEY

**Jill (Gelfenbien) Laufer '95** – A walk-on forward, Jill was a dual-sport UConn athlete, also playing in goal for the nationally-ranked Husky soccer program. A human development/family relations major, Jill is a math teacher in Glastonbury, Conn.

**Orly (Grossman) Cohen '94** – Orly is a physical therapist for Maccabi Health Care in Israel where she resides with her three children.

**Stacy Hansmeyer '00** – A communication science graduate, Hansmeyer is currently an assistant coach at the University of Oklahoma after serving as a student assistant coach for the 2000-01 season with UConn. She was a tri-captain of the 2000 National Championship team and resides in Norman, Okla.

**Kelly (Hunt) Gay '98** – Kelly is the director of marketing for Mass Mutual's Life Division. She resides in Windsor, Conn., with her husband David and their three children.

**Colleen Healy '94** – A communication sciences graduate, Colleen is a health science associate for Merck & Co. Colleen also has served as the color commentator on the UConn Women's Basketball radio broadcasts on the UConn Radio Network.

**Charde Houston '08** – A sociology graduate, Charde is currently playing in the WNBA for the Minnesota Lynx.

This is UConn... UConn was ranked the top public university in New England for the first time in 1997 by U.S. News & World Report.



MEMBERS OF THE 1965 TEAM

**Brittany Hunter '08** – A sports administration graduate, Brittany is currently an assistant coach on the women's basketball staff at Temple University.

**Nancy Hunter '72** – Currently a project coordinator for Alcohol and Drug Recovery Centers, Inc. She resides in Springfield, Mass.

**Asjha Jones '02** – Graduated from the School of Business and was the fourth pick overall by the Washington Mystics in the 2002 WNBA Draft. Finished her career as UConn's then-all-time leader in games played. Currently plays for the Connecticut Sun.

**Lori (Kulo) Mathieu '87** – An environmental planning major, she is a water supply analyst for the state of Connecticut's Department of Public Health in Hartford, Conn. Lori resides in Coventry, Conn., with her daughter Katie and son David.

**Mary Ellen (Langfield) Kearney '83** – An early childhood development major, Mary Ellen is currently a paraprofessional for the Stroudsburg School District. She and her husband, Chris, have two children and reside in Stroudsburg, Pa.

**Kris (Lamb) Caruso '90** – Kris is currently the women's basketball head coach at Longwood University in Virginia. She resides in Farmville, Va., with her husband and their two sons.

**Heidi Law '94** – Graduated with a sociology degree, Heidi is currently a catastrophe analyst for Chubb and Son. She resides in Boonton, N.J.

**Susan Leslie '71** – Currently works for the State of Connecticut Labor Department. Susan resides in South Windsor, Conn.

**Nancy (Lindberg) Seremeth '65** – Nancy is currently an office manager for Chemical Sales and Service, Inc. She and her husband, Joseph, have four children and reside in West Brookfield, Mass.

**Laura Lishness '91** – The former Kodak All-District I and First Team All-BIG EAST standout was a communications science graduate. She currently resides in Lorton, Va.

**Rebecca (Lobo) Rushin '95** – Rebecca began her professional basketball career with the New York Liberty in 1997 and played professionally for six seasons before retiring in 2003. During the summer of 1996, she earned a Gold Medal at the Olympic Games in Atlanta. Rebecca was the 1995-96 Consensus National Player of the Year and a National Academic All-American of the Year. She graduated in May of 1995 as a Dean's List and Phi Beta Kappa scholar-athlete in political science. She is currently a sports broadcaster for the WNBA and college basketball on ESPN. Rebecca and her husband Steve Rushin, a writer for *Sports Illustrated*, have two daughters.

**Kim (Longo) LaVerde '80** – A biology major, Kim is a medical technologist in the St. Francis Hospital & Medical Center lab. She and husband, Michael, have three children, Jeremy, Shane and Kerrie, and reside in Simsbury, Conn. Kim also lettered in soccer and softball for four years during her time at UConn.

**Ellen Mahoney '72** – A physical education major, Ellen is a physical education teacher at Ledyard High School as well as an assistant softball coach at UConn.

**Kerri Mansberg '81** – Kerry is the product and marketing head at the Aetna. She resides in Ashford, Conn.

**Brenda (Marquis) Wilson '99** – Brenda is a former youth services officer for the Connecticut Department of Corrections. She and her husband Norries, the head football coach at Columbia University, reside in New York City, with their son Cecil and daughter Trinity.

**Stacey Marron '04** – Graduated with an exercise physiology degree and currently is working as a personal trainer in Costa Mesa, Calif.

**Carla Massaro '78** – A graduate of UConn's School of Pharmacy. Carla resides in Fairfield, Conn.

**Jessica Moore '04** – Graduated with a liberal arts degree. Jess is currently playing in the WNBA for the L.A. Sparks.

**Rhonda (Moody) Kincaid '72** – Currently works for the Department of Mental Health and Addiction Services. She resides in Columbia, Conn., with her two children, Tristan and Amber Lea.

**Karen Mullins '79** – Karen enters her 25th year as the highly successful head softball coach at UConn. The four-time BIG EAST Coach of the Year, has led UConn to eight NCAA National Tournament appearances.

**Meg Murray '88** – An anthropology and archeology major, Meg received her master's degree in cultural anthropology and is pursuing her Ph.D. in counseling psychology. She is currently an Assistant Athletic Director at Southwest Texas State University.

**Renee Najarian '88** – The former First Team All-BIG EAST player is a physical education instructor and coached the highly successful volleyball and basketball teams at E.O. Smith High School in Storrs, Conn.



KIM (LONGO) LAVERDE WITH HUSBAND MICHAEL AND CHILDREN JEREMY, SHANE AND KERRIE

**Linda Nardone '82** – A physical education major, Linda is the general manager of the Saugatuck Rowing & Fitness Club. She resides in Westport, Conn.

**Mary (Neubelt) Cardarelli '80** – An education major, Mary also got her masters degree in physical therapy. Mary is an athletic trainer for Manchester High School. She and her husband, Bill, reside in Manchester with their two children: BJ and Megan.



# WHERE ARE THEY NOW?



PREVIEW

COACHES

THE HUSKIES

REVIEW

RECORDS

HONORS

HISTORY

ALL-TIME RESULTS

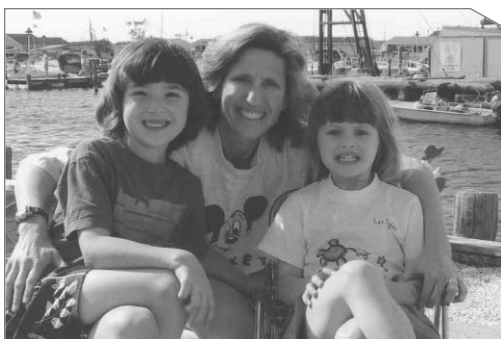
UConn

**Maureen (Nodine) Fortier '80** – Maureen is a high school math teacher in Biddleford, Maine, which is where she resides with her husband Robert and three children.

**Sarah (Northway) Maria '97** – A communication and journalism major, Sarah graduated from Georgetown University Law Center in 2001 and is currently a corporate finance attorney for Lathan & Watkins LLP. Sarah currently resides in Arlington, Va., with her husband David and daughter Grace and son Andrew.

**Julie Overbaugh '78** – Julie is a professor of microbiology at the University of Washington in the School of Medicine and lives in Seattle.

**Meghan (Pattysyn) Culmo '92** – A communications science graduate, the former All-BIG EAST standout served as UConn basketball assistant coach for two years (1993-95) before changing professions. She is currently in government relations employed by Roy and LeRoy, LLC. Meghan has been a color commentator for the WNBA on Lifetime Television. This season she will again serve as a member of the broadcast team for UConn's television games on CPTV. She and her husband Angelo reside in West Hartford, Conn., and have a son Angelo and a daughter Kathleen.



**DIANE POLETTI-METZEL AND HER DAUGHTERS ERIN AND NICOLE**

**Francine Pechnik '85** – Graduated with a degree in education. She is currently a case management administrator for Maricopa County Long Term Care. She resides in Mesa, Ariz.

**Diane Poletti-Metzel '86** – A marketing major, Diane is the director of systems engineering for Vonage. She and her husband, Ron, reside in Princeton, N.J., with their daughters, Nicole and Erin.

**Shea Ralph '01** – Graduated with an exercise physiology degree. She is currently an assistant coach on the University of Connecticut women's basketball staff after serving in the same capacity at the University of Pittsburgh for five seasons.

**Lynne Reif '89** – Lynne is employed as a professional school counselor in a sixth grade center in Webster Groves, Mo. She also performs with her band, Belle Star. She resides in St. Louis, Mo.

**Jennifer Rizzotti '96** – The 1995-96 AP and Wade Trophy National Player of the Year and GTE National Women's Basketball Academic All-America Team Member of the Year. Jen is the head women's basketball coach at the University of Hartford. She and her husband have two sons.

**Karen Robbins '75** – Karen is a consultant for the Oracle Co., and resides in Fairport, N.Y.

**Missy Rose '97** – Missy is an assistant high school principal for the Forest City Regional School District. She resides in Dunmore, Pa.



**KERRY BASCOM-POLIQVIN, MEGHAN (PATTYSYN) CULMO, WENDY DAVIS, KATHY BANTLEY & DEBBIE (BAER) FISKE**

**Pam (Rothfuss) Switzer '92** – A biology undergraduate major, Pam received her nursing degree from St. Joseph's (Conn.) College. She and her husband, Peter, reside in Marlborough, N.H., with their three children.

**Fran (Rubinovitz) Morris '72** – A math major, Fran also got her law degree and is currently practicing law in Conn. She and her husband, Rob, have two children and reside in Fairfield, Conn.

**Nykesha Sales '98** – Currently the all-time scoring leader in Connecticut women's basketball history, Nykesha played in the WNBA for the Connecticut Sun and Orlando Miracle before retiring after the 2007 season.

**Shannon Saunders '92** – Shannon is currently a sports massage therapist. She resides in Middletown, Conn.

**Paige Sauer '00** – Tri-captain of the 2000 National Championship team, Paige began her professional WNBA career with the LA Sparks in 2000, before being traded to the Cleveland Rockers in the summer of 2001. She was released from the Rockers in 2002. She currently serves as an assistant coach at the University of Northern Colorado.

**Kelly Schumacher '01** – A communication science graduate. She was selected by the Indiana Fever in the first round of the 2001 WNBA draft. She is currently playing with Detroit.

**Linda (Shannon) Pescatello '73** – Linda is an Assistant Professor at UConn. She and her husband, David, reside in Wethersfield, Conn., with their children, Shannon and Conor.

**Valerie Sirois '80** – Valerie works in the registrar for Thomas College. She resides in Skowhegan, Maine.

**Laura Smith '72** – President of STS Precision Machine Corp. Laura resides in Storrs, Conn.

**Marlene (Stager) Bledsoe '82** – A counselor at The Astor Home for Children in New York. Marlene and her husband, Truman, live in Lagrangeville, N.Y., with their three children: Jordan, Dylan and Ethan.

**Reggie Stankaitis '75** – An education major, Reggie is currently an executive recruiter for St. Paul Travelers. She resides in Wethersfield, Conn.

**Linda (Staveski) Groher '78** – Linda graduated with a degree in education. She currently resides in South Glastonbury, Conn., with her husband Andrew and two children, Amanda and Melissa.

**This is UConn...** The Homer Babbage Library is renowned as one of the nation's most technologically advanced research libraries.



**Arleen (Stavitsky) DiFrancesco '65** – Arleen is currently a litigation billing auditor and resides in Wallingford, Conn.

**Deborah Stefanowski Kelley '78** – Deborah currently resides in West Hartford, Conn., with her husband, Tom, and their three children: Ryan, Austin and Kate.

**Ann Strother '06** – Currently playing in the WNBA for the Atlanta Dream after being drafted in the 2006 WNBA Draft. Graduated with a degree in psychology.

**Susie Sturman '82** – A physical education major, Susie teaches health and physical education at Two Eagle River High School in Montana.

**Ketia Swanier '08** – A sociology major, Ketia was a first round pick of the WNBA's Connecticut Sun in 2008. She is currently playing for the Sun.

**Tammi Sweet '87** – A biochemistry major, Tammi received her master's degree in neurobiology. Tammi is an anatomy teacher at Finger Lakes School of Massage.

**Diana Taurasi '04** – A liberal arts and science major, Diana is currently playing for the Phoenix Mercury in the WNBA. She is a three-time WNBA All-Star, WNBA Rookie of the Year and two-time Olympic gold medalist (2004 & 2008).

**Deborah Thomas '74** – She is currently self employed and working as a psychologist. Deborah resides in South Glastonbury, Conn., with her two children.

**Mel Thomas '08** – Graduated with a degree in business and currently is setting her sights on a playing career overseas. She resides in Cincinnati, Ohio.



PEGGY (WALSH) MYERS WITH HUSBAND NORM AND CHILDREN

**Barbara Turner '06** – A liberal arts and sciences major, Turner is currently playing in the WNBA for the Houston Comets after being drafted in the 2006 WNBA Draft.

**Lucille Vassallo '65** – An education major, Lucille is a retired teacher and coach from the East Windsor (Conn.) Public School System.

**Beth Vinson '80** – A nutritional science major, Beth is the director for client services for Neoforma Inc. She resides in Fairfield, Conn.

**Roberta Wachtelhausen '79** – Bert received her undergraduate degree from the School of Education. She is the senior vice president of sales and marketing for North American Health Plans.



JENNIFER (WEIDEMAN) JOMARD, HER HUSBAND BERNARD AND THEIR SONS BRADLEY AND JOHN-MACKENZIE

**Meg Waldron '72** – A finance major, Meg also got her law degree and is currently a consultant for The Hartford.

**Peggy (Walsh) Myers '86** – A current office assistant with the UConn basketball program, Peggy (a design resource management major) and her husband, Norm (a former Husky

football player), have a daughter, Kelly, and son, Tommy.

**Pam (Webber) Mitchell '95** – Co-captain of the 1995 National Championship Team, Pam received her undergraduate degree in sports marketing. She received her master's in physical therapy and works as a therapist in Pennsylvania where she lives with her husband Scott and their son.

**Jennifer (Weideman) Jomard '87** – Jennifer graduated from UConn with a self-designed major in electrical engineering and fine arts. She is an international development manager. She and her husband Bernard have two sons, Bradley and John-Mackenzie. They reside in Paris, France.

**Stacey (Wetzel) Bayley '92** – Stacey received her undergraduate degree in marketing from UConn's prestigious School of Business, and received her MBA for UConn. She is a vice president at Litton Loan Servicing and resides in Katy, Texas, with her husband Chad.

**Rita Williams '98** – Rita has successfully started a non profit organization called "The Rita Williams Basketball Academy, Inc.", which is designed to give youth a chance to succeed in life through sports. The program includes an afterschool program, scholarship fund, AAU program and basketball camps.

**Tamika (Williams) Raymond '02** – Tamika graduated with a communication science degree and was selected sixth overall in the 2002 WNBA Draft by the Washington Mystics. She is currently playing for the WNBA's Connecticut Sun and is an assistant coach for the University of Kansas women's basketball team.

**Nicole Wolff '06** – Currently works for MMB, an advertising agency in Boston, Mass.

**Kara Wolters '97** – Kara was named 1997 National and BIG EAST Player of the Year in her senior season. She played for the WNBA's Sacramento Monarchs and was a member of the 2000 Olympic Team. Resides in Connecticut with her husband Sean and their two children.

**Ashley (Valley) Woodward '05** – Received her masters degree from Quinnipiac and is currently teaching fifth grade at Montowese Middle School in New Haven, Conn. She is married to Mike Woodward, a former UConn men's basketball player. They reside in Hamden, Conn.

**Morgan Valley '05** – After graduation, she served as an assistant coach at College of the Holy Cross. She is currently an assistant coach at Towson University and resides in Baltimore, Md.



PREVIEW

COACHES

THE HUSKIES

REVIEW

RECORDS

HONORS

HISTORY

ALL-TIME RESULTS

UConn



In 2006, the Huskies honored 10 former players and head coach Geno Auriemma as the inaugural inductees into the UConn Huskies of Honor.

## #2

Tahirah Williams ('05-present)  
Ashley Valley ('02-05)

## #3

Tiffany Hayes ('08-present)  
Diana Taurasi ('01-04)  
Tammy Arnold ('96-97)  
Shea Matlock ('94)

## #4

Tihana Abrlic ('98-99)  
Amy Hughes ('96)

## #5

Caroline Doty ('08-present)  
Maria Conlon ('01-04)  
Kim Better ('93-96)  
Debbie Baer ('90-92)

## #10

Sue Bird ('99-02)  
Missy Rose ('94-97)  
Laura Lishness ('88-91)

## #11

Ketia Swanier ('04-'08)  
Kelly Schumacher ('98-01)  
Debbie Baer ('89)  
Krista Blomquist ('87-88)

## #12

Jessica McCormack ('08-pres.)  
Stacey Marron ('02-05)  
Marcy Glenney ('98-99)  
Nicole Woodall ('91-93)  
Barbara Carter ('87-88)

### NUMBERS GAME

11 UConn players have worn  
No. 23  
the most of any number

## #13

Jacque Fernandes ('06-present)  
Rashidat Sadiq ('04-05)

## #14

Meghan Gardler (2006)  
Keirsten Walters ('99-01)  
Tonya Boone ('90-94)  
Lori Kulo ('86-87)

## #15

Asjha Jones ('99-02)  
Evy Doerfler ('84-85)  
Jenna Lammers ('83)  
Linda Nardone ('79-82)

## #20

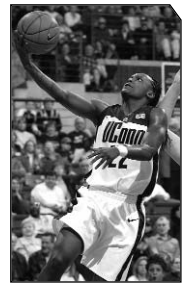
Renee Montgomery ('05-present)  
Morgan Valley ('01-04)  
Stacy Hansmeyer ('97-00)  
Colleen Healy ('92-94)  
Kathy Bantley ('89-90)  
Sandra Gavin ('81-84)

## #21

Heather Buck ('08-present)  
Nicole Wolff ('02-'06)  
Jennifer Rizzotti ('93-96)  
Orly Grossman ('91)  
Heidi Robbins ('87-90)

## #22

Meghan Gardler ('07-present)  
Ashley Battle ('01-05)  
Amy Duran ('96-99)  
Heidi Law ('90-92)  
Marissa Jaye ('87-88)  
Jill Brumbaugh ('85-86)  
Tammi Sweet ('84)  
Judy McNellis ('82-83)  
Phyllis Clapis ('80-81)



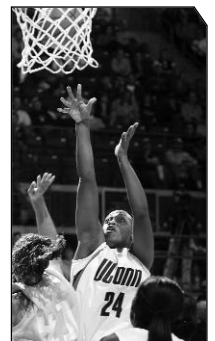
Ashley Battle

## #23

Maya Moore ('07-present)  
Willnett Crockett ('02-'06)  
Kennitra Johnson ('00-01)  
Swin Cash ('99)  
Rita Williams ('96-98)  
Heather Phillips ('93)  
Shannon Saunders ('89-92)  
Jill Brumbaugh ('87-88)  
Audrey Epstein ('83-86)  
Francine Pechnik ('82)  
Leslie Waugh ('80-81)

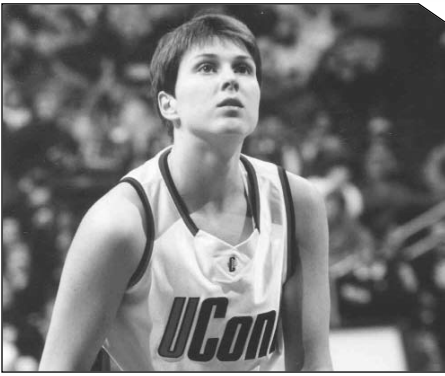
## #24

Charde Houston ('04-'08)  
Kerry Bascom ('88-91)  
Tammi Sweet ('85-87)  
Shelly Clymer ('83)  
Mary Neubelt ('81)  
Beth Conrad ('80)



Charde Houston



**Svetlana Abrosimova****#25**

Mel Thomas ('04-'08)  
Svetlana Abrosimova ('98-01)  
Brenda Marquis ('95-96)  
Pam Rothfuss ('89-92)  
Jennifer Weideman ('84-87)  
Daphne Roper ('82)  
Kerri Mansberg ('78-81)

**#30**

**Lorin Dixon ('07-present)**  
Hope Dixon ('92)  
Cathy Bochain ('80-81)

**#31**

**Tina Charles ('06-present)**  
Jessica Moore ('01-05)  
Carla Berube ('94-97)  
Wendy Davis ('89-92)  
Lynne Reif ('86-88)  
Kathy Cermola ('81-84)  
Kathy Curley ('80)

**#32**

**Kalana Greene ('05-present)**  
Swin Cash ('00-02)  
Courtney Gaine ('96-99)  
Pam Webber ('92-95)  
Kris Lamb ('87-90)  
Diane Poletti ('83-86)  
Lisa Fubio ('82)  
Beth Vinson ('77-80)

**Barbara Turner****#33**

Barbara Turner ('02-'06)  
Shea Ralph ('97-01)  
Jamelle Elliott ('93-96)  
Meghan Pattyson ('89-92)  
Diane Madl ('87-88)  
Krista Blomquist ('86)  
Marlene Stager ('79-82)

**#34**

Tamika Williams ('99-02)  
Kelley Hunt ('95-98)  
Stacey Wetzel ('89-92)  
Meg Murray ('86)  
Daphne Roper ('83)  
Cindy Dysenchuk ('81-82)

**#35**

Marci Czel ('98-01)  
Kathy Ferrier ('90-93)

**#40**

Kathy Green ('90-91)  
Jill Gelfenbien ('95)  
Meg Murray ('83-85)  
Cathy Borman ('83)

**#41**

**Kaili McLaren ('06-present)**  
Paige Sauer ('97-00)  
Cindy Dysenchuk ('83-84)  
Cathy Bochain ('82-83)  
Susie Sturman ('79-81)

**#42**

Nykesha Sales ('95-98)  
Jennifer Riley ('88)  
Peggy Walsh ('83-86)

**Ann Strother****#43**

Ann Strother ('02-'06)  
Mary Ellen Langfield ('80-83)

**#44**

Brittany Hunter ('04-'08)  
Christine Rigby ('99-01)  
Sarah Northway ('96-97)  
Sue Mayo ('94)  
Lori Kulo ('84-85)  
Leigh Curl ('82)  
Chris Gedney ('78-81)

**#45**

Jean Clark ('98)  
Anne Fiolkowski ('84-87)  
Dale Garvin ('80)

**#50**

Rebecca Lobo ('92-95)  
Renee Najarian ('87-88)  
Marissa Jaye ('86)  
Leigh Curl ('83-85)  
Darlene Hedges ('80)

**#51**

**Cassie Kerns ('05-present)**

**#52**

Kara Wolters ('94-97)  
Angela Pleasants ('87-88)



PREVIEW

COACHES

THE HUSKIES

REVIEW

RECORDS

HONORS

HISTORY

ALL-TIME RESULTS

UConn

**ALASKA**

Moore, Jessica.....Palmer, Alaska

**CALIFORNIA**

Clark, Jean .....Chino, Calif.  
Crockett, Willnett.....Harbor City, Calif.  
Houston, Charde .....San Diego, Calif.  
Taurasi, Diana .....Chino, Calif.

**COLORADO**

Sherwood, Liz .....Castle Rock, Colo.  
Strother, Ann.....Castle Rock, Colo.

**CONNECTICUT**

Blomquist, Krista.....Branford, Conn.  
Bochain, Cathy .....Moosup, Conn.  
Bresser, Patty .....Waterford, Conn.  
Buck, Heather .....Pawcatuck, Conn.  
Cermola, Kathy .....West Hartford, Conn.  
Clapis, Phyllis .....Hartford, Conn.  
Clymer, Shelly .....West Hartford, Conn.  
Conlon, Maria .....Derby, Conn.  
Czel, Marci.....Guilford, Conn.  
Davis, Wendy .....Milford, Conn.  
Fernandes, Jacquie .....Pawcatuck, Conn.  
Ferrier, Kathy .....Bristol, Conn.  
Garvin, Dale.....New London, Conn.  
Gavin, Sandra.....Madison, Conn.  
Glenney, Marci .....Lisbon, Conn.  
Healy, Colleen .....Windham, Conn.  
Jaye, Marissa.....Westbrook, Conn.  
Kulo, Lori .....Ellington, Conn.  
Law, Heidi .....Harwinton, Conn.  
Lishness, Laura .....Bristol, Conn.  
Longo, Kim .....West Simsbury, Conn.  
Marquis, Brenda .....Moosup, Conn.  
Mullins, Karen.....Waterford, Conn.  
Neubelt, Mary .....Manchester, Conn.  
Parker, Betsy .....Willimantic, Conn.  
Pechnick, Francine .....Fairfield, Conn.  
Rizzotti, Jennifer .....New Fairfield, Conn.  
Sales, Nykesha .....Bloomfield, Conn.  
Serra, Sandra.....Somers, Conn.  
Sirois, Val .....Marlborough, Conn.  
Wachtelhausen, Roberta.....Wallingford, Conn.  
Williams, Rita .....Norwalk, Conn.

**FLORIDA**

Hayes, Tiffany .....Lakeland, Fla.  
Robinson, Kiana.....Brandon, Fla.

**GEORGIA**

Moore, Maya .....Lawrenceville, Ga.  
Swanier, Ketia .....Columbus, Ga.

**INDIANA**

Johnson, Kennitra.....New Albany, Ind.  
Kerns, Cassie .....Valparaiso, Ind.

**MAINE**

Ward, Wanda .....Bridgton, Maine

**MARYLAND**

Better, Kim .....Suitland, Md.  
Doerfler, Evy.....Landover, Md  
Dysenchuk, Cindy.....Bethesda, Md.  
Gaine, Courtney .....Bethesda, Md.  
Gedney, Chris .....Gaithersburg, Md.  
Mansberg, Kerri .....Wheaton, Md.  
Murray, Meg.....Gaithersburg, Md.  
Pleasants, Angela .....Silver Springs, Md.  
Sturman, Susie .....Silver Springs, Md.

**MASSACHUSETTS**

Aselton, Sherry .....Leicester, Mass.  
Bantley, Kathy.....Dudley, Mass.  
Berube, Carla.....Oxford, Mass.  
Borman, Cathy .....Framingham, Mass.  
Conrad, Beth.....Sterling, Mass.  
Lammers, Jenna .....Mattapan, Mass.  
Langfield, Mary Ellen .....Somerset, Mass.  
Lobo, Rebecca .....Southwick, Mass.  
Najarian, Renee.....Wakefield, Mass.  
Nardone, Linda .....Concord, Mass.  
Neilson, Linda .....Sharon, Mass.  
Vinson, Beth .....Belmont, Mass.  
Wolff, Nicole .....Walpole, Mass.  
Wolters, Kara.....Holliston, Mass.

**MICHIGAN**

Weideman, Jennifer .....Grand Haven, Mich.

**MINNESOTA**

Northway, Sarah .....Nisswa, Minn.

**MISSISSIPPI**

Fancy, Dawn .....East Orleans, Miss.

**MISSOURI**

Reif, Lynne.....Clayton, Mo.

**NEW HAMPSHIRE**

Bascom, Kerry .....Epping, N.H.  
Hunt, Kelley .....Londonderry, N.H.

**This is UConn...** In 2001, the renovations to the Wilbur Cross Building were completed allowing for offices such as Financial Aid and Residential Life to be in one central location.



PREVIEW

COACHES

THE HUSKIES

REVIEW

RECORDS

HONORS

HISTORY

ALL-TIME RESULTS

UCONN

**NEW JERSEY**

Boone, Tonya .....Newark, N.J.  
Fiolkowski, Anne .....Berlin, N.J.  
Jones, Asjha .....Piscataway, N.J.  
Matlock, Shea .....Mays Landing, N.J.  
Poletti, Diane .....Somerset, N.J.  
Riley, Jennifer .....Califon, N.J.  
Stager, Marlene .....Rockaway, N.J.  
Walsh, Peggy .....Voorhees, N.J.  
Williams, Tahirah .....Montclair, N.J.

**NEW MEXICO**

Marron, Stacey .....Albuquerque, N.M.

**NEW YORK**

Bird, Sue .....Syosset, N.Y.  
Carter, Barbara .....White Plains, N.Y.  
Charles, Tina .....Jamaica, N.Y.  
Dixon, Lorin .....Springfield Gardens, N.Y.  
Epstein, Audrey .....Woodmere, N.Y.  
Green, Kathy .....Pelham, N.Y.  
Hedges, Darlene .....Centereach, N.Y.  
Mayo, Sue .....Montgomery, N.Y.  
Roper, Daphne .....Roosevelt, N.Y.  
Woodall, Nicole .....De Witt, N.Y.

**NORTH CAROLINA**

Ralph, Shea .....Fayetteville, N.C.

**OHIO**

Hughes, Amy .....Wheelersburg, Ohio  
Thomas, Mel.....Cincinnati, Ohio  
Williams, Tamika .....Dayton, Ohio

**OKLAHOMA**

Hansmeyer, Stacy .....Norman, Okla.  
Sauer, Paige .....Midwest City, Okla.

**PENNSYLVANIA**

Baer, Debbie.....Red Lion, Pa.  
Battle, Ashley .....Pittsburgh, Pa.  
Brumbaugh, Jill.....Claysburg, Pa.  
Cash, Swin .....McKeesport, Pa.  
Curl, Leigh .....Pittsburgh, Pa.  
Dixon, Hope .....Birdsboro, Pa.  
Doty, Caroline .....Doylestown, Pa.  
Duran, Amy .....Pittsburgh, Pa.  
Fubio, Lisa .....Altoona, Pa.  
Gardler, Meghan .....Springfield, Pa.  
McNellis, Judy .....Altoona, Pa.  
Madl, Diane .....Mountain Top, Pa.  
Pattysen, Meghan.....Furlong, Pa.  
Robbins, Heidi .....Honesdale, Pa.

Rose, Missy .....Scranton, Pa.  
Saunders, Shannon .....Pottstown, Pa.  
Wetzel, Stacey .....Parkesburg, Pa.  
Waugh, Leslie .....Hollidaysburg, Pa.  
Webber, Pam .....Hollidaysburg, Pa.

**RHODE ISLAND**

Rothfuss, Pam.....Coventry, R.I.

**SOUTH CAROLINA**

Greene, Kalana .....St. Stephen, S.C.

**VERMONT**

Sweet, Tammi .....Essex Junction, Vt.  
Valley, Ashley .....Colchester, Vt.  
Valley, Morgan .....Colchester, Vt.

**VIRGINIA**

Lamb, Kris .....Richmond, Va.  
Phillips, Heather .....Burke, Va.

**WASHINGTON D.C.**

Elliott, Jamelle .....Washington D.C.  
McLaren, Kaili .....Washington D.C.

**WEST VIRGINIA**

Montgomery, Renee.....St. Albans, W. Va.

**BRITISH COLUMBIA**

Rigby, Christine.....Victoria, B.C.

**CROATIA**

Abrlic, Tihana.....Zagreb, Croatia

**ISRAEL**

Grossman, Orly .....Tel Aviv, Israil

**NEW ZEALAND**

McCormack, Jessica .....Auckland, New Zealand

**NIGERIA**

Sadiq, Rashidat .....Lagos, Nigeria

**QUEBEC**

Schumacher, Kelly .....Quyong, Quebec

**RUSSIA**

Abrosimova, Svetlana .....St. Petersburg, Russia



PREVIEW

COACHES

THE HUSKIES

REVIEW

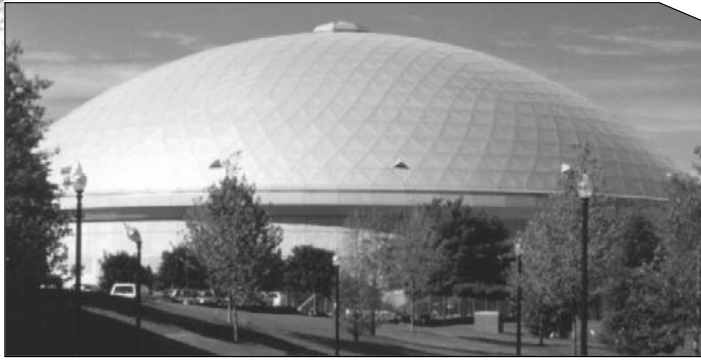
RECORDS

HONORS

HISTORY

ALL-TIME RESULTS

UConn



## HARRY A. GAMPEL PAVILION

(opened January 31, 1990)

### UConn's All-Time Records at Facility

**Overall: 236-17 (.933)**

**vs. BIG EAST: 136-9 (.938)**

**vs. Non-conference: 100-8 (.926)**

**C**onnecticut Basketball, has created an unmatched winning tradition under head coach Geno Auriemma over the last 23 seasons, features one of the best on-campus home court facilities in all of college basketball — Harry A. Gampel Pavilion.

A spacious, state-of-the-art building, Harry A. Gampel Pavilion opened in January of 1990 and totals more than 171,000 square feet in the domed area while an additional 39,000 square feet comprise the attached Wolff-Zackin Natatorium (including a 50-meter Olympic size swimming pool).

The complex was a \$28 million project and measures 320 feet in diameter in the circular domed arena area. The brilliant aluminum dome of the Gampel Pavilion towers more than 130 feet in the air from ground level.

The main arena includes two large four-color scoreboards with complete video and graphic message capability. The "Alumni Court" main arena floor is constructed with the latest version of spring aire wood.

In 2006, a new tradition was started as a program was initiated called the "Huskies of Honor." The launching of the "Huskies of Honor" program allows the UConn Division of Athletics the opportunity to pay visible tribute in the Harry A. Gampel Pavilion to the top players and coaches in UConn women's basketball history.

In addition to the large individual panels honoring the inductees that are displayed adjacent to the scoreboard on the East end of Gampel Pavilion, each honoree also has a plaque that is on permanent display on the lobby level of Gampel Pavilion. The plaques include an action photo of each honoree and summarize in text the top career achievements for each "Huskies of Honor" inductee.

During the summer of 1996, the original capacity of Gampel Pavilion (8,241) was increased with additional seating placed above each of the four entrance quadrants of the structure. That placed the capacity at 10,027, however, renovations to the lower level endzones during the summer and fall of 2002 have added another 140 seats. The current capacity of Gampel Pavilion is 10,167, making the building the largest on-campus basketball facility in New England.

The Connecticut women's basketball program is totally housed in Harry A. Gampel Pavilion and was renovated in the summer and fall of 2002.

The Huskies' newly renovated team room includes a spacious varsity locker room with wood grain "pro style" individual lockers as well as an adjoining team lounge and audio-visual area, complete with a study area, large screen television, satellite dish hook-up for scouting and game review, and a stereo sound system.

The Connecticut basketball staff is housed in a suite of offices located adjacent to the team room and directly off the main arena court.

Also included on the arena level of the Harry A. Gampel Pavilion is a unique strength, conditioning and weight training area for the women's basketball program. Supervising that area is Jerry Martin, the women's basketball strength and conditioning coordinator.

Rounding out the arena level of the Gampel Pavilion are individual areas for Connecticut's Division of Athletic Sports Medicine and Athletic Performance staff, headed by Director of Sports Medicine, Dr. Jeffrey Anderson. Dr. Anderson's has an office that is directly adjacent to the spacious athletic medical training facility.

In 2007-08, the UConn women's basketball program played eight regular-season home games in Harry A. Gampel Pavilion, attracting 76,522 fans, an average of 9,565 per game or 94 percent of capacity. UConn has had a spotless record at home in Gampel Pavilion in 10 of the past 15 seasons, including a perfect 8-0 mark in 2007-08.

In the past 15 years, UConn is 190-5 at home in Storrs against collegiate opposition (19-0 in 1993-94, 18-0 in 1994-95, 18-1 in 1995-96, 17-0 in 1996-97, 16-0 in 1997-98, 12-1 in 1998-99, 15-1 in 1999-00, 14-0 in 2000-01, 14-0 in 2001-02, 8-0 in 2002-03, 7-0 in 2003-04, 6-1 in 2004-05, 8-1 in 2005-06, 10-0 in 2006-07, 8-0 in 2007-08).

Since its first game in Harry A. Gampel Pavilion (against Georgetown on January 31, 1990), the UConn women's basketball program is a superb 236-17 (.933 winning percentage) in 253 games against collegiate opponents in its on-campus home facility.

That includes an 136-9 record against BIG EAST Conference opponents and a 100-8 mark against non-BIG EAST foes.

During the past 15 seasons, UConn is 107-2 in Gampel Pavilion against BIG EAST Conference opponents.

In addition to outstanding regular season success in Gampel Pavilion, UConn has had remarkable postseason success in the building. The Huskies have won five BIG EAST Tournament titles in Gampel Pavilion (1994, 1996, 1997, 2000, 2001).

Connecticut has played host to NCAA play in Gampel Pavilion 15 times and holds a 26-2 NCAA Tournament mark in the facility, including a current 24-game NCAA winning streak in Gampel Pavilion.

Of the 253 UConn women's basketball games played against collegiate opposition in Gampel Pavilion during the past 18 seasons, 143 have been sold out, including 96 of the last 116 games overall in the regular season dating back to an 82-69 win over Rutgers on December 31, 1997.

The Harry A. Gampel Pavilion in Storrs has proven to be a very special home for the Connecticut women's basketball program.

**This is UConn...** On June 6, 2004, a corpse flower opened at UConn's Evolutionary Biology Conservatory. This is the first time a corpse flower has opened in New England since the 1930's.



**CONNECTICUT'S  
Gampel High & Lows**

<b>PTS</b>	HIGH .....126 vs. Providence College (1/6/98)
	LOW .....41 vs. Iowa (11/29/90)
<b>REBS</b>	HIGH .....70 vs. Providence (1/11/95)
	LOW .....26 vs. Virginia Tech (1/12/03)
<b>FGM</b>	HIGH .....49 vs. Quinnipiac (12/27/98)
	LOW .....13 vs. Iowa (11/29/90)
<b>FGA</b>	HIGH .....89 vs. Providence (1/11/95)
	LOW .....42 vs. Hartford (12/23/91)
<b>FG%</b>	HIGH ..... .726 (45-62) vs. St. John's (2/23/01)
	LOW ..... .283 (13-46) vs. Iowa (11/29/90)
<b>3PTM</b>	HIGH .....14 vs. Rutgers (2/14/01)
	LOW .....0 vs. Rutgers (1/15/97)
	.....0 vs. Idaho State (11/26/96)
<b>3PTA</b>	HIGH .....28 vs. Rutgers (2/14/01)
	LOW .....3 vs. Hartford (12/23/91)
<b>3PT%*</b>	HIGH ..... .667 (10-15) vs. St. John's (2/23/01)
	LOW ..... .000 (0-13) vs. Georgia (1/15/96)
<b>FTM</b>	HIGH .....34 vs. Georgetown (1/16/99)
	LOW .....2 vs. West Virginia (12/7/95)
<b>FTA</b>	HIGH .....45 vs. Georgetown (1/16/99)
	LOW .....5 vs. West Virginia (12/7/95)
<b>FT%*</b>	HIGH .....100.0 (16-16) vs. Villanova (2/6/91)
	LOW ..... .348 (3-8) vs. Miami (1/23/01)
<b>FOULS</b>	HIGH .....26 vs. Syracuse (1/7/97)
	.....26 vs. Providence (1/23/91)
	LOW .....5 vs. St. John's (2/18/98)
	.....5 vs. Villanova (3/2/97)
<b>ASSTS</b>	HIGH .....34 vs. Western Michigan (11/23/03)
	.....34 vs. Quinnipiac (12/27/98)
	LOW .....8 vs. Iowa (11/29/90)
<b>STLS</b>	HIGH .....25 vs. Rhode Island (11/29/97)
	LOW .....1 vs. Stanford (2/20/93)
<b>BLKS</b>	HIGH .....17 vs. Seton Hall (1/13/95)
	LOW .....0, Done seven times by UConn

**OPPONENTS'  
Gampel High & Lows**

<b>PTS</b>	HIGH .....96, Providence (vs. Boston College, BET, 3/5/94)
	.....96, Providence (vs. Georgetown, BET, 3/3/90)
	LOW .....20, Quinnipiac (12/27/98)
<b>REBS</b>	HIGH .....50, Boston College (vs. West Virginia, BET, 3/4/00)
	LOW .....16, St. John's (2/23/01)
<b>FGM</b>	HIGH .....39, Providence (vs. Georgetown, BET, 3/3/90)
	LOW .....8, Quinnipiac (12/27/98)
<b>FGA</b>	HIGH .....88, Providence (vs. Pittsburgh, BET, 3/4/90)
	LOW .....34, Pittsburgh (1/15/00)
<b>FG%</b>	HIGH. .565 (39-69), Providence (vs. Georgetown, BET, 3/3/90)
	LOW ..... .154 (10-65), Long Island (3/17/01)
<b>3PTM</b>	HIGH .....12, West Virginia (3/2/04)
	LOW .....0, Done 14 times (eight of those against UConn)
<b>3PTA</b>	HIGH .....32, Providence (1/12/96)
	LOW .....1, 4 times (3 of those times vs. UConn)
<b>3PT%*</b>	HIGH ..... .692, Villanova (9-13) (2/22/97)
	LOW ..... .000, Done 11 times (seven times against UConn)
<b>FTM</b>	HIGH .....33, Providence (vs. Boston College, BET, 3/5/94)
	LOW .....0, St. John's (2/18/98)
<b>FTA</b>	HIGH .....39, Providence (vs. Boston College, BET, 3/5/94)
	LOW .....0, St. John's (2/18/98)
<b>FT%*</b>	HIGH .....100.0 (12-12), Providence (1/12/96)
	LOW .....0.000 (0-0) St. John's (2/18/98)
<b>FOULS</b>	HIGH .....33, Georgetown (BET, 3/8/92)
	LOW .....9, Dartmouth (3/20/05)
<b>ASSTS</b>	HIGH .....27, Providence (vs. Pittsburgh, BET, 3/4/90)
	LOW .....3, Seton Hall (1/13/99)
<b>STLS</b>	HIGH .....16, West Virginia (1/10/98)
	LOW .....1, vs. Colorado State (12/21/06)
<b>BLKS</b>	HIGH .....9, St. John's (vs. Providence, BET, 3/7/92)
	LOW .....0, Done 40 times (33 times against UConn)

BET - BIG EAST Tournament  
 NCAA - NCAA Tournament  
 HCC- Hartford Courant Classic  
 \* - Based on 10 or more attempts



This is UConn... The University of Connecticut provides the state with more than 37,000 jobs.

PREVIEW  
 COACHES  
 THE HUSKIES  
 REVIEW  
 RECORDS  
 HONORS

HISTORY

ALL-TIME RESULTS

UConn



## Huskies at the XL Center Game-by-Game

Overall Record in at XL Center in Hartford: 87-11 (888)

DATE	OPPONENT	W/L	SCORE	ATTENDANCE
March 11, 2008	Louisville!	W	65-59	9,982
March 10, 2008	Pittsburgh!	W	74-47	9,302
March 9, 2008	DePaul!	W	86-67	10,204
March 3, 2008	Rutgers	W	66-46	15,779
Feb. 20, 2008	Marquette	W	95-63	13,859
Jan. 30, 2008	South Florida	W	71-48	12,445
Jan. 19, 2008	Cincinnati	W	86-49	13,677
Dec. 31, 2007	Army	W	82-33	10,168
Dec. 29, 2007	Hartford	W	70-24	14,581
Dec. 5, 2007	Virginia	W	75-45	11,134
Nov. 29, 2007	BYU	W	80-34	10,752
March 20, 2007	UW-GreenBay\$	W	94-70	7,257
March 18, 2007	UMBC\$	W	82-33	6,824
March 6, 2007	Rutgers!	L	47-55	9,755
March 5, 2007	Louisville!	W	76-50	9,090
March 4, 2007	South Florida!	W	74-54	9,328
Feb. 24, 2007	Villanova	W	92-49	14,783
Feb. 17, 2007	Pittsburgh	W	82-68	14,992
Jan. 6, 2007	Tennessee	L	64-70	16,294
Dec. 31, 2006	Sacred Heart	W	82-40	13,635
Dec. 29, 2006	Hartford	W	62-36	14,442
Dec. 23, 2006	Oakland (Mich.)	W	85-53	12,474
Nov. 13, 2006	Richmond	W	84-50	12,883
March 7, 2006	West Virginia!	W	50-44	10,128
March 6, 2006	DePaul!	W	69-57	9,744
March 5, 2006	Notre Dame!	W	71-60	10,090
Feb. 15, 2006	Providence	W	84-58	14,210
Jan. 24, 2006	South Florida	W	77-47	13,512
Jan. 16, 2006	LSU	W	51-48	15,105
Jan. 12, 2006	Cincinnati	W	92-71	12,735
Dec. 31, 2005	Army	W	85-46	14,077
Dec. 29, 2005	Albany	W	78-44	13,364
Dec. 22, 2005	Hofstra	W	86-49	12,459
Dec. 19, 2005	Holy Cross	W	81-54	13,106
Dec. 5, 2005	North Carolina	L	54-77	13,527
Dec. 1, 2005	Hartford	W	72-47	12,871
Mar. 8, 2005	Rutgers!	W	67-51	9,036
Mar. 7, 2005	Notre Dame!	W	67-54	8,646
Mar. 6, 2005	Syracuse!	W	82-56	8,581
Feb. 19, 2005	Syracuse	W	85-49	16,294 (sellout)
Feb. 3, 2005	Rutgers	W	57-44	16,294 (sellout)
Jan. 22, 2005	Seton Hall	W	64-47	16,294 (sellout)
Jan. 17, 2005	Texas	W	73-57	16,294 (sellout)
Jan. 8, 2005	Tennessee	L	67-68	16,294 (sellout)
Dec. 29, 2004	Michigan State	L	51-67	16,294 (sellout)
Dec. 27, 2004	George Mason	W	76-44	16,294 (sellout)
Dec. 7, 2004	Hartford	W	55-32	16,294 (sellout)
Dec. 5, 2004	Holy Cross	W	75-36	16,294 (sellout)
Mar. 29, 2004	Penn State#	W	66-49	14,855
Mar. 27, 2004	UC Santa Barbara#	W	63-55	14,253
Mar. 8, 2004	Boston College!	L	70-73	11,394
Mar. 7, 2004	Virginia Tech!	W	48-34	10,833
Feb. 17, 2004	Pittsburgh	W	97-42	16,294 (sellout)
Jan. 19, 2004	Rutgers	W	72-47	16,294 (sellout)
Jan. 17, 2004	Boston College	W	69-61	16,294 (sellout)
Jan. 3, 2004	Duke	L	67-68	16,294 (sellout)
Dec. 29, 2003	N.C. State	W	87-53	16,294 (sellout)
Dec. 18, 2003	Arizona State	W	81-55	16,294 (sellout)
Nov. 30, 2003	Holy Cross	W	76-42	16,294 (sellout)
Nov. 25, 2003	Florida State	W	81-53	16,294 (sellout)
Mar. 4, 2003	West Virginia	W	78-58	16,294 (sellout)
Feb. 12, 2003	Syracuse	W	75-51	16,294 (sellout)
Jan. 18, 2003	Georgetown	W	72-49	16,294 (sellout)
Jan. 8, 2003	Rutgers	W	67-62	16,294 (sellout)
Jan. 4, 2003	Tennessee	W	63-62/ot	16,294 (sellout)
Dec. 22, 2002	Saint Joseph's	W	82-48	16,294 (sellout)



**F**or the 13th season in a row, the 2008-09 University of Connecticut women's basketball team will use the XL Center as its second home court.

In 2008-09, UConn will play eight regular-season games in the XL Center. In addition, 2008-09 will mark the sixth consecutive season in which the XL Center will serve as the host site of the Big East Tournament.

Prior to the 1996-97 season, the UConn women's basketball program had not played in the XL Center for seven seasons. Connecticut had played nine women's basketball games in Hartford between 1980 and 1989. All of those contests were part of a UConn men's and women's basketball doubleheader. UConn posted a 5-4 record in those nine games and now sports a 87-11 overall mark in Hartford, including wins in 85 of its last 92 games in the building.

The XL Center is located in the heart of downtown Hartford. Until December of 1998, it also served as the home court for the ABL's New England Blizzard of the Women's American Basketball League. A trio of former UConn greats were members of that team—Jennifer Rizzotti, Kara Wolters and Carla Berube.

Dec. 7, 2002	Southern Cal	W	68-44	16,294 (sellout)
Jan. 21, 2002	Notre Dame	W	80-53	16,294 (sellout)
Jan. 12, 2002	Miami	W	96-50	16,294 (sellout)
Dec. 22, 2002	Oklahoma	W	86-72	16,294 (sellout)
Dec. 9, 2001	Louisiana Tech	W	74-50	16,294 (sellout)
Dec. 6, 2001	Holy Cross	W	97-54	16,294 (sellout)
Nov. 24, 2001	Rhode Island	W	84-38	16,294 (sellout)
Feb. 20, 2001	West Virginia	W	97-34	16,294 (sellout)
Jan. 27, 2001	Syracuse	W	84-60	16,294 (sellout)
Nov. 30, 2001	Tennessee	W	81-76	16,294 (sellout)
Nov. 29, 2001	George Washington	W	90-63	16,294 (sellout)
Nov. 12, 2001	Georgia	W	99-70	16,294 (sellout)
Feb. 26, 2000	Notre Dame	W	77-59	16,294 (sellout)
Jan. 17, 2000	Rutgers	W	65-50	16,294 (sellout)
Nov. 26, 1999	Old Dominion	W	109-66	15,817
Nov. 24, 1999	Kentucky	W	68-62	15,777
Feb. 9, 1999	Boston College	W	107-77	16,294 (sellout)
Jan. 2, 1999	West Virginia	W	116-71	16,294 (sellout)
Feb. 16, 1998	Maine	W	98-70	16,294 (sellout)
Jan. 25, 1998	Boston College	W	86-53	15,701
Jan. 19, 1998	Old Dominion	W	93-72	16,294 (sellout)
Feb. 16, 1997	Miami	W	86-59	16,294 (sellout)
Jan. 5, 1997	Tennessee	W	72-57	16,294 (sellout)
Jan. 4, 1989	Boston College	W	62-46	16,016* (sellout)
Feb. 20, 1988	Syracuse	W	74-60	16,016* (sellout)
Dec. 6, 1987	Central Conn.	W	75-39	10,087*
Feb. 22, 1986	St. John's	L	47-62	11,841*
Jan. 18, 1986	Pittsburgh	L	53-57	15,236*
Jan. 26, 1983	Providence	L	65-75	10,048*
Feb. 27, 1982	Georgetown	W	78-73(ot)	15,425* (sellout)
Feb. 10, 1982	St. John's	L	64-70	15,425* (sellout)
Dec. 9, 1980	Fairfield	W	74-58	9,593*

\*-Nine games were part of UConn men's/women's basketball doubleheader  
! - BIG EAST Tournament (2004, 2005, 2006, 2007)  
# - 2004 NCAA East Regional  
\$ - 2007 NCAA First/Second Rounds

This is UConn... There are over 100 students employed at the Daily Campus during the academic year.



## The BIG EAST Championship and NCAA Tournament at Gampel Pavilion and the XL Center

### UCONN BIG EAST REGULAR SEASON CHAMPIONS

1989 1990 1991 1994 1995 1996  
1997 1998 1999 2000 2001 2002  
2003 2004 2007 2008

### UCONN BIG EAST TOURNAMENT CHAMPIONS

1989 1991 1994 1995 1996  
1997 1998 1999 2000 2001 2002  
2005 2006 2008

### BIG EAST TOURNAMENT

In March of 2008, the BIG EAST Tournament was held in Connecticut for the 12th time since play began in 1982-83. UConn has played host to eight of the last 12 championships at either Harry A. Gampel Pavilion or the XL Center. In all, 127 BIG EAST Tournament games have been played in Connecticut.

The Huskies have won the BIG EAST Tournament a record 14 times, including sweeping the tournament and regular-season titles during 10 of the last 14 seasons, including 2007-08.

Beginning in 2004, the BIG EAST announced that the XL Center would remain home to the BIG EAST Women's Basketball Championship through 2009.

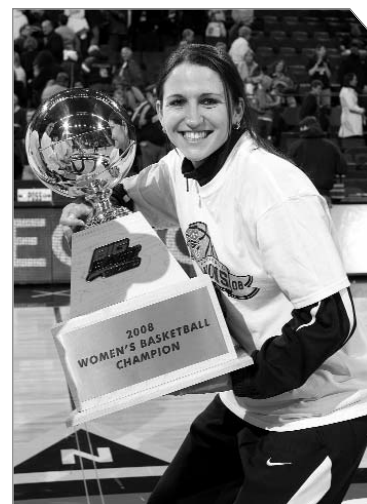
### NCAA TOURNAMENT

#### UCONN HOME NCAA TOURNAMENT GAMES

YEAR	OPPONENT	ROUND	SITE/DATE	SCORE	W/L
1989	La Salle	First	Hugh S. Greer Field House, Storrs, CT (March 15)	72-63	L
1990	Clemson	Second	Harry A. Gampel Pavilion, Storrs, CT (March 17)	61-59	L
1991	Toledo	Second	Harry A. Gampel Pavilion, Storrs, CT (March 16)	81-80	W
1992	St. Peter's (NJ)	First	Harry A. Gampel Pavilion, Storrs, CT (March 18)	83-66	W
1993	Louisville	First	Harry A. Gampel Pavilion, Storrs, CT (March 18)	74-71	L
1994	Brown	First	Harry A. Gampel Pavilion, Storrs, CT (March 16)	79-60	W
	Auburn	Second	Harry A. Gampel Pavilion, Storrs, CT (March 20)	81-59	W
1995	Maine	First	Harry A. Gampel Pavilion, Storrs, CT (March 16)	105-75	W
	Virginia Tech	Second	Harry A. Gampel Pavilion, Storrs, CT (March 18)	91-45	W
	Alabama	Final 16	Harry A. Gampel Pavilion, Storrs, CT (March 23)	87-56	W
	Virginia	Final 8	Harry A. Gampel Pavilion, Storrs, CT (March 25)	67-63	W
1996	Howard	First	Harry A. Gampel Pavilion, Storrs, CT (March 16)	94-63	W
	Michigan State	Second	Harry A. Gampel Pavilion, Storrs, CT (March 18)	88-68	W
1997	Lehigh	First	Harry A. Gampel Pavilion, Storrs, CT (March 15)	103-55	W
	Iowa	Second	Harry A. Gampel Pavilion, Storrs, CT (March 17)	72-53	W
1998	Fairfield	First	Harry A. Gampel Pavilion, Storrs, CT (March 13)	93-52	W
	G. Washington	Second	Harry A. Gampel Pavilion, Storrs, CT (March 15)	75-67	W
1999	St. Francis	First	Harry A. Gampel Pavilion, Storrs, CT (March 12)	97-46	W
	Xavier	Second	Harry A. Gampel Pavilion, Storrs, CT (March 14)	86-84	W
2000	Hampton	First	Harry A. Gampel Pavilion, Storrs, CT (March 17)	116-45	W
	Clemson	Second	Harry A. Gampel Pavilion, Storrs, CT (March 19)	83-45	W
2001	Long Island	First	Harry A. Gampel Pavilion, Storrs, CT (March 17)	101-29	W
	Colorado St.	Second	Harry A. Gampel Pavilion, Storrs, CT (March 19)	89-44	W
2002	St. Francis (Pa.)	First	Harry A. Gampel Pavilion, Storrs, CT (March 16)	86-37	W
	Iowa	Second	Harry A. Gampel Pavilion, Storrs, CT (March 18)	86-48	W
2003	Boston Univ.	First	Harry A. Gampel Pavilion, Storrs, CT (March 23)	91-44	W
	TCU	Second	Harry A. Gampel Pavilion, Storrs, CT (March 25)	81-66	W
2004*	Santa Barbara	Reg. Semi	Hartford Civic Center, Hartford, CT (March 27)	63-55	W
	Penn State	Reg. Final	Hartford Civic Center, Hartford, CT (March 29)	66-49	W
2005	Dartmouth	First	Harry A. Gampel Pavilion, Storrs, CT (March 20)	95-47	W
	Florida State	Second	Harry A. Gampel Pavilion, Storrs, CT (March 22)	70-52	W
2007	UMBC	First	Hartford Civic Center, Hartford, CT (March 18)	82-33	W
	UW-Green Bay	Second	Hartford Civic Center, Hartford, CT (March 20)	94-70	W

Bold - NCAA Championship Years

\* - BIG EAST Conference served as host





PREVIEW

COACHES

THE HUSKIES

REVIEW

RECORDS

HONORS

HISTORY

ALL-TIME RESULTS

UConn



Maya Moore became the first freshman (male or female) in BIG EAST Conference history to be honored as the BIG EAST Player of the Year.



UConn senior guard Ketia Swanier was named as the recipient of the inaugural BIG EAST Sixth Man of the Year Award.



Diana Taurasi and Sue Bird helped lead the 2008 U.S. Olympic Team to a gold medal at the Summer Games in Beijing, China. Bird and Taurasi have both won gold medals in each of the last two Olympic Games.



# ONE SUMMER TWO GOLD MEDALISTS



Former Huskies Sue Bird and Diana Taurasi each won gold medals at the 2008 Summer Olympic Games in Beijing, China.



This is UConn... The Connecticut Archaeology Center is located on UConn's Storrs campus.