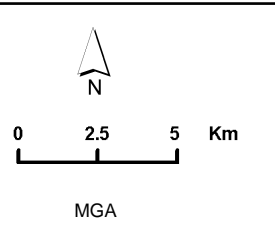
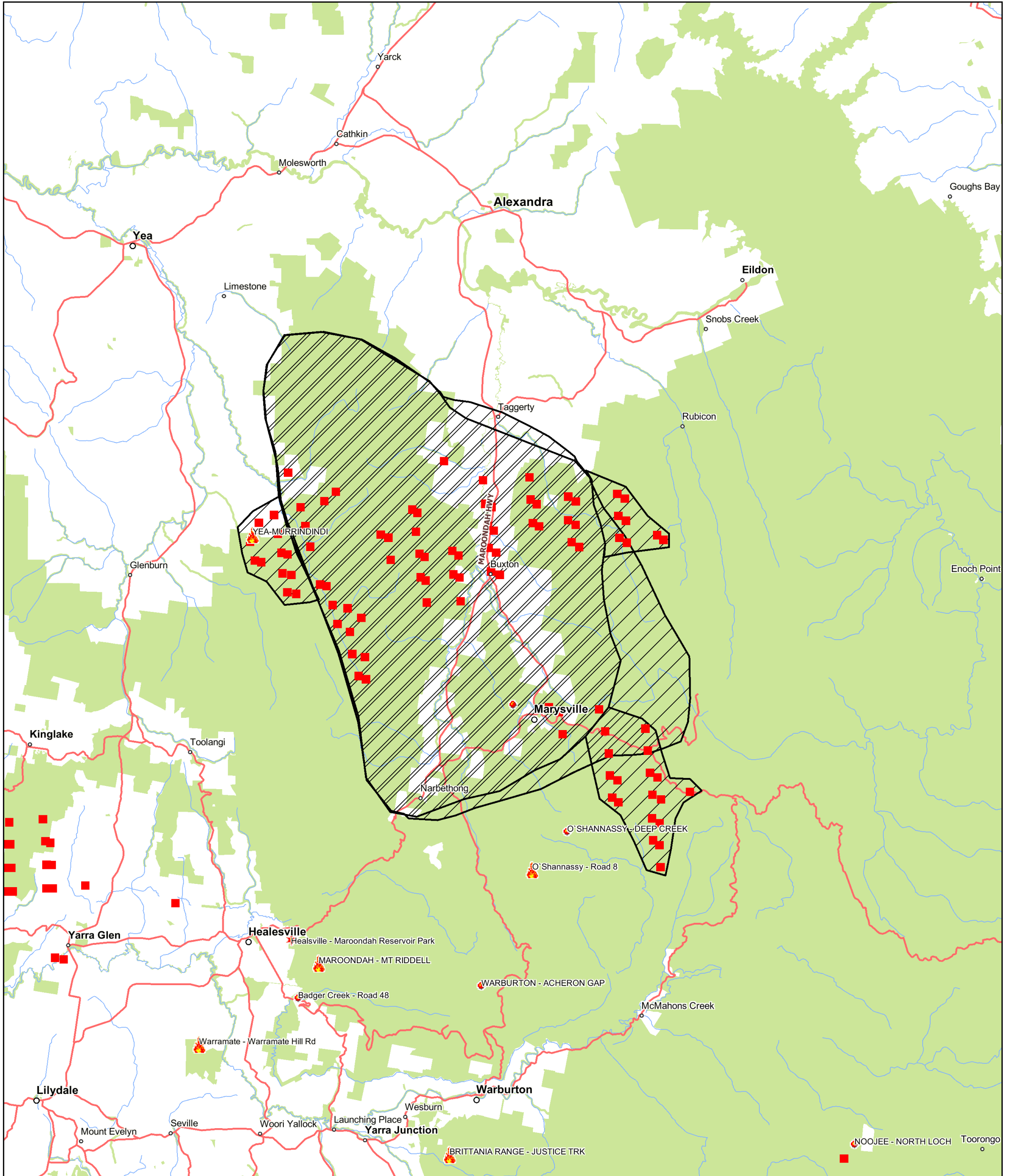


# Yea - Murrundindi Media Map

Produced on Sun Feb 08 02:51:24 EST 2009 by Firemap



Department of Sustainability and Environment



Fire Area: 0200 08/02/2009  
 Sat. Hotspots: 0015 08/02/2009  
 Map Notes: This map is a partial fire extent based on initial information only. Actual extent will be greater.

### Legend

- |  |  |  |                     |
|--|--|--|---------------------|
|  | Burnt Area                                 |  | Local Features      |
|  | Fire Origin - Going; Contained; Controlled |  | Main Road           |
|  | Satellite Hot Spots                        |  | Minor Road / Track  |
|  | 0-12hrs                                    |  | Hydrology           |
|  | 12-24hrs                                   |  | Permanent Waterbody |
|  | Township                                   |  | Public Land         |

Hotspot data produced from satellite detection, courtesy of Geoscience Australia & NASA Modis satellites.  
 Limitations of the Data:  
 1/ The hotspot location on any map is only accurate to within 1.5km.  
 2/ Not all hotspots are detected by the satellites.  
 3/ The satellite detects any heat source that is hotter than normal.

Disclaimer: This map is a snapshot generated from Victorian Government data. This material may be of assistance to you but the State of Victoria does not guarantee that the publication is without flaw of any kind or is wholly appropriate for your particular purposes and therefore disclaims all liability for error, loss or damage which may arise from reliance upon it. All persons accessing this information should make appropriate enquiries to assess the currency of the data. (c) The State of Victoria Department of Sustainability and Environment 2008

