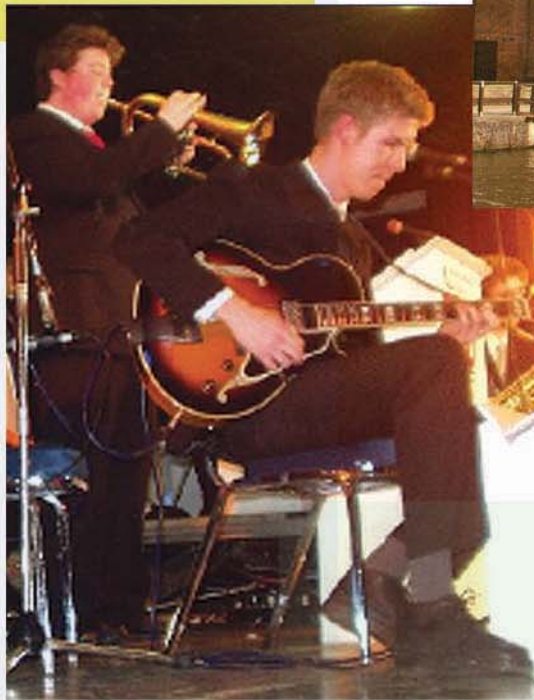


The Wigan Pier Quarter Planning and Regeneration Strategy



January 2006



Introduction

This Strategy sets out the planning and regeneration framework for the sustainable development of the Wigan Pier Quarter over the next 10 years. The strategy will form the basis of a co-ordinated programme of public and private investment, which will bring about a major transformation within the area.

The 'core' of the area, based around the canal, has a unique and special character, which provides the opportunity for conservation-led regeneration, building upon existing assets to create a new community that meets the needs and aspirations of the 21st century. The Queen Street/Caroline Street area has the potential in the medium – long term to become a higher quality mixed use area which takes advantage of its strategic location between the town centre, railway stations and the Wigan Pier historic core.



Location Context

