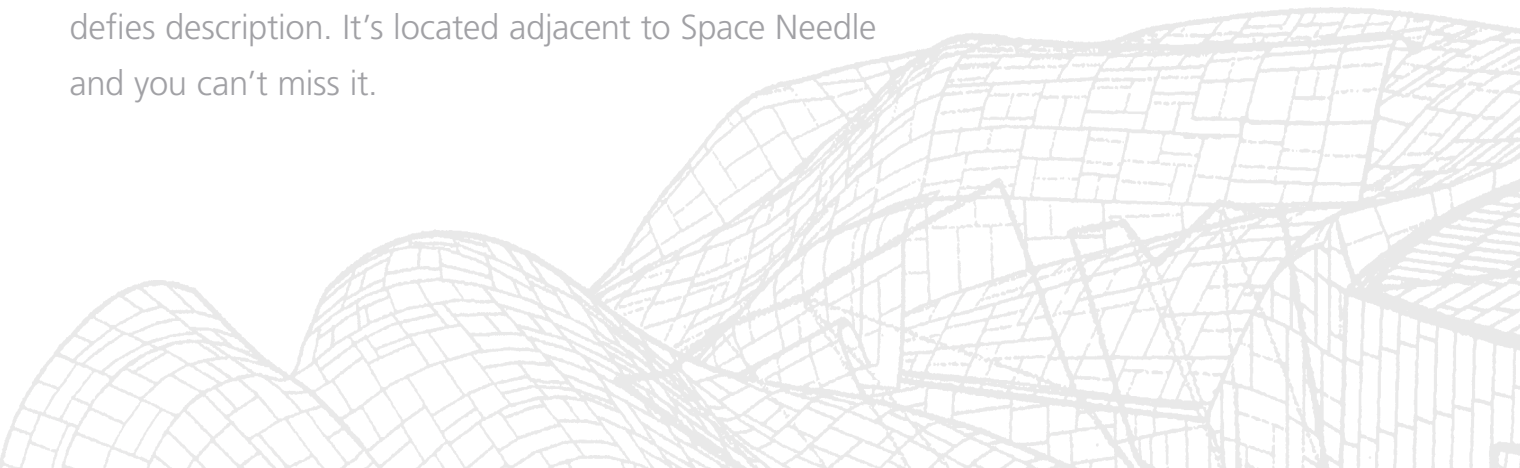


**EXPERIENCE MUSIC PROJECT | SCIENCE FICTION MUSEUM AND HALL OF FAME (EMP|SFM)**

may be the most unusual and inspiring museum you'll ever experience.

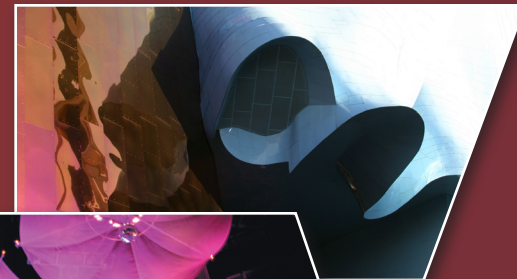
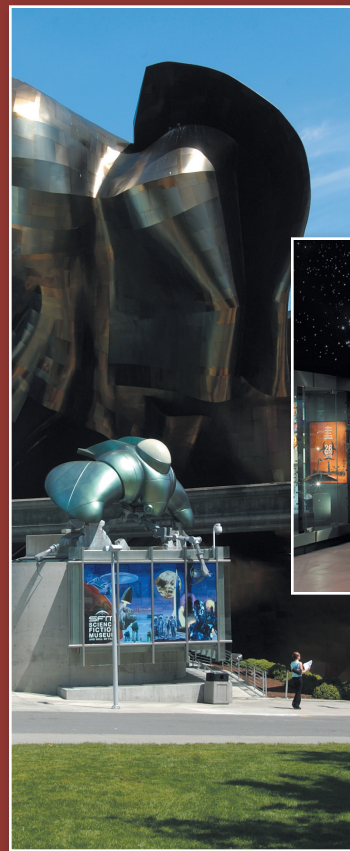
Even the building, designed by legendary architect Frank O. Gehry, defies description. It's located adjacent to Space Needle and you can't miss it.



**ROCKET TO STARDOM—OR TO THE STARS**

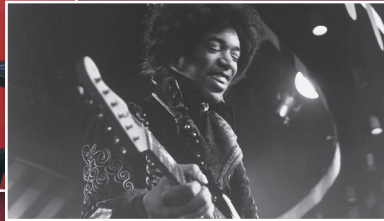
EMP|SFM is the place where the extraordinary world of popular music meets the otherworldly universe of science fiction. Learn about two popular passions through state-of-the-art exhibitions and hands-on interactives.

This mind-blowing museum encourages exploration and creativity—all under one architecturally amazing roof!



**EXPERIENCE MUSIC PROJECT (EMP)** is a treasure trove of popular music history. It's also a hands-on music experience, where you can look, touch, experiment and perform.

Enjoy artifacts and concert footage of immortal Seattle native Jimi Hendrix and learn about other groundbreaking Northwest musicians.



EMP|SFM permanent collection.



**THE VINYL FRONTIER**

Take in rare sound recordings, priceless instruments, historic photos, hand-written lyrics and filmed interviews with music greats.

The Sound Lab, equipped with studios and instruments, microphones and mixing equipment, lets you play some licks, lay down some tracks and produce your own CD. On Stage lets you step into the spotlight and perform before a frenzied virtual crowd.

EMP will fulfill your rock star fantasies and show you what rock 'n' roll is all about.

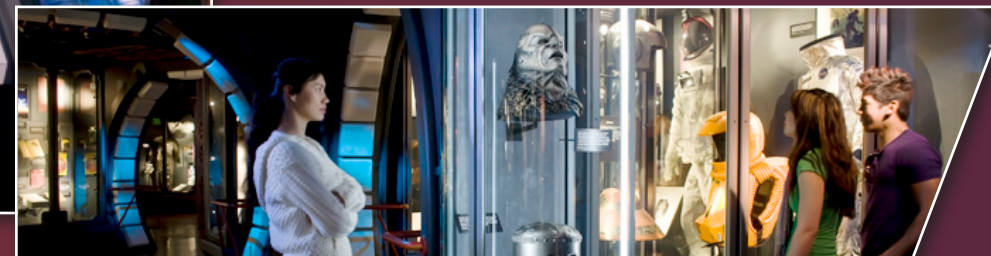
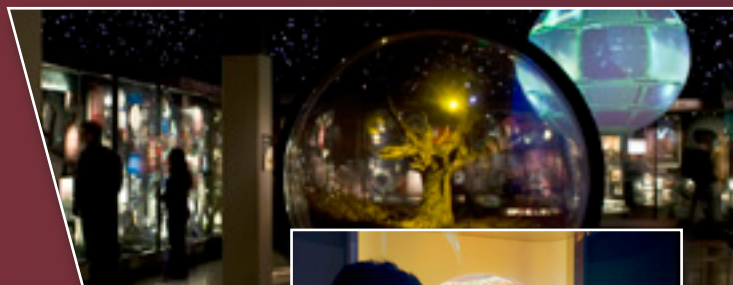
**THE FINAL FRONTIER**

**SCIENCE FICTION MUSEUM AND HALL OF FAME (SFM)** celebrates the many facets of science fiction.

Behold the spectacular collection of original science fiction artifacts on display—from Klingon daggers to the real E.T. to first editions of literary classics. Whether your passion is spaceships or lightsabers, SFM will satisfy devoted sci-fi fans. And if you don't think science fiction is for you, SFM will make you think again.

At the heart is the Science Fiction Hall of Fame, which honors the authors, artists and creators who invented science fiction and shaped how we imagine the future.

The otherworldly and imaginative galleries of SFM will delight Earthlings of all ages.



Photos by William Rugen.



**DRIVING DIRECTIONS**  
**From I-5 North or South:** Take Exit 167 and follow the signs to Seattle Center.  
**From WA-99, Northbound** Take the Western Avenue exit and follow the signs to Seattle Center.  
**From WA-99, Southbound** Take the Broad Street exit. Turn hard right onto Harrison Street.

**From Washington State Ferries** Head North on Alaskan Way or Western Avenue, turn right onto Broad Street, left on 5th Avenue North.

**PARKING**  
 There are several lots and ample street parking surrounding EMP|SFM and Seattle Center. The largest parking lot (and the only one for oversized vehicles) is located at 5th Avenue North and Harrison Street.

**TRANSPORTATION**  
 EMP|SFM and Seattle Center is served by many bus routes and the Seattle Center Monorail. For more information, call 206.233.3989 or visit [seattlecenter.com/transportation](http://seattlecenter.com/transportation).

**GETTING TO EMP|SFM**

325 5th Avenue North Seattle, WA 98109  
 (at Seattle Center) | [empsfm.org](http://empsfm.org)

**PHONE NUMBERS**  
 Main . . . . . 206.770.2700 | 1.877.EMP.SFM1  
 Box office . . . . . 206.770.2702 | 1.877.454.7836  
 Group sales . . . . . 206.770.2776  
 School group information . . . . . 206.770.2766  
 Revolution Cafe . . . . . 206.770.2777

**MUSEUM HOURS**  
**Fall/Winter/Spring:** Daily, 10:00am – 5:00pm  
 (Closed Thanksgiving and Christmas Day)  
**Summer (Memorial Day weekend through Labor Day):**  
 Daily, 10:00 am – 7:00pm  
*For up-to-the-minute operating hours, call 206.770.2700 or visit [empsfm.org](http://empsfm.org).*

**ADMISSION**  
 Buy tickets at the EMP|SFM ticket counter or box office.  
 Members . . . . . Free  
 Adult (ages 18 – 64) . . . . . \$15.00  
 Senior (ages 65+), youth (ages 5 – 17) . . . . . \$12.00  
 Military, student (w/ ID) . . . . . \$12.00  
 Children under 5 . . . . . Free

**GENERAL INFO**

**MUSEUM STORES**  
 The museum stores offer a wide selection of books, posters, CDs, apparel, toys, games and accessories related to the museum's collections and exhibitions.

**REVOLUTION CAFE**  
 Open the same hours as the museum and featuring a variety of grab and go menu items including sandwiches, wraps, salads, soup, dessert, beverages and espresso.

**EMP|SFM MEMBERSHIP**  
*(Admission can be applied toward membership.)*  
 Museum members enjoy a year of free admission, free movies, free audio guide rentals, free member-only previews, discounts at the stores, cafe and more!

**POLICIES**  
 Children ages 12 and under must be accompanied by an adult. Photography, videotaping, food, beverages and oversized bags are not permitted in exhibition areas (complimentary coat check available).

Photos by EMP|SFM staff, unless otherwise noted.  
 © 2009 Experience Music Project | Science Fiction Museum and Hall of Fame. All Rights Reserved. 11098.0609





## WHERE ELSE CAN YOU...?

**1 EXAMINE** the remains of Jimi Hendrix's '52 Fender Stratocaster, smashed and burned at the '67 Monterey Pop Festival



EMPSFM permanent collection.

**2 TEAR IT UP** at On Stage, a virtual concert experience complete with screaming fans



Photo by Rick Barry.



**3 SURF** through hundreds of exclusive interviews with popular music and science fiction luminaries



**4 RECORD** your own story in the Personal History Booth

**5 SMILE** as you play back the CD recorded with your friends or family inside a Jam Studio



**6 EXPERIMENT** on guitar, bass or drums at a Sound Lab interactive learning station



Photo by William Rugen.

**7 BEHOLD** Captain Kirk's command chair and many more *Star Trek* props and costumes



**8 ACTIVATE** the Death Star from *Star Wars* and feel the floor vibrate

**9 MARVEL** at famous space ships gliding by the Space Dock and learn more about them



Photo by William Rugen.

**10 CAPTURE** the view from *Blade Runner's* flying Spinner Car from a remote-controlled camera



**EXPERIENCE ALL THIS AND MORE AT EMP|SFM!**

## MUSIC + SCI-FI = EMP|SFM

Experience Music Project  
Science Fiction Museum and Hall of Fame  
325 5th Avenue North at Seattle Center  
[empsfm.org](http://empsfm.org)