

Moving Massachusetts Forward.
massDOT



Massachusetts Department of Transportation




**Introduction to the Knowledge
Corridor Passenger Rail Project
FRA Award and Next Steps**

March 23, 2010

White House Press Release on HSIPR Funding Awards



Legend

-  Corridor Development Program
-  Projects Laying Foundation for High-Speed Passenger Rail
-  Long-Term Vision for High-Speed Passenger Rail

“This corridor has one train per day connecting communities in central Connecticut and Massachusetts to the Northeast Corridor and Vermont. The vision for this corridor is to restore the alignment to its original route via the Knowledge Corridor in western Massachusetts, improving trip time and increasing the population base that can be served.”

Historical Timeline of Project

- 1971 – Amtrak takes over operation of passenger service in the US
- 1972 – Montrealer service resumed under Amtrak
- 1989 – Montrealer moved to Central Vermont Railroad via New London
- 1995 – Last run of Montrealer
- 1995 – First run of Vermonter as state supported train between Springfield & St. Albans, Vermont
- 2000 – Hartford Regional Transit Strategy renewed discussion of Springfield to New Haven Commuter Service

Historic Timeline (continued)

- 2000 – Knowledge Corridor created as economic and cultural partnership between Springfield & Hartford
- 2003 – Initial meetings with Mayors of Northampton & Holyoke on rail service on Conn River Line
- 2005 – Knowledge Corridor Feasibility Study funded through Federal Transportation Bill
- 2008 – Knowledge Corridor Feasibility Study Begun (Completed 2009); Passenger Rail Infrastructure and Investment Act
- 2009 – July 10 – HSIPR Pre-Application submitted; Track 1A and Track 2 Applications submitted
- 2010 – January 28 Track 2 Project Award

Grant Application to Federal Railroad Administration (FRA)

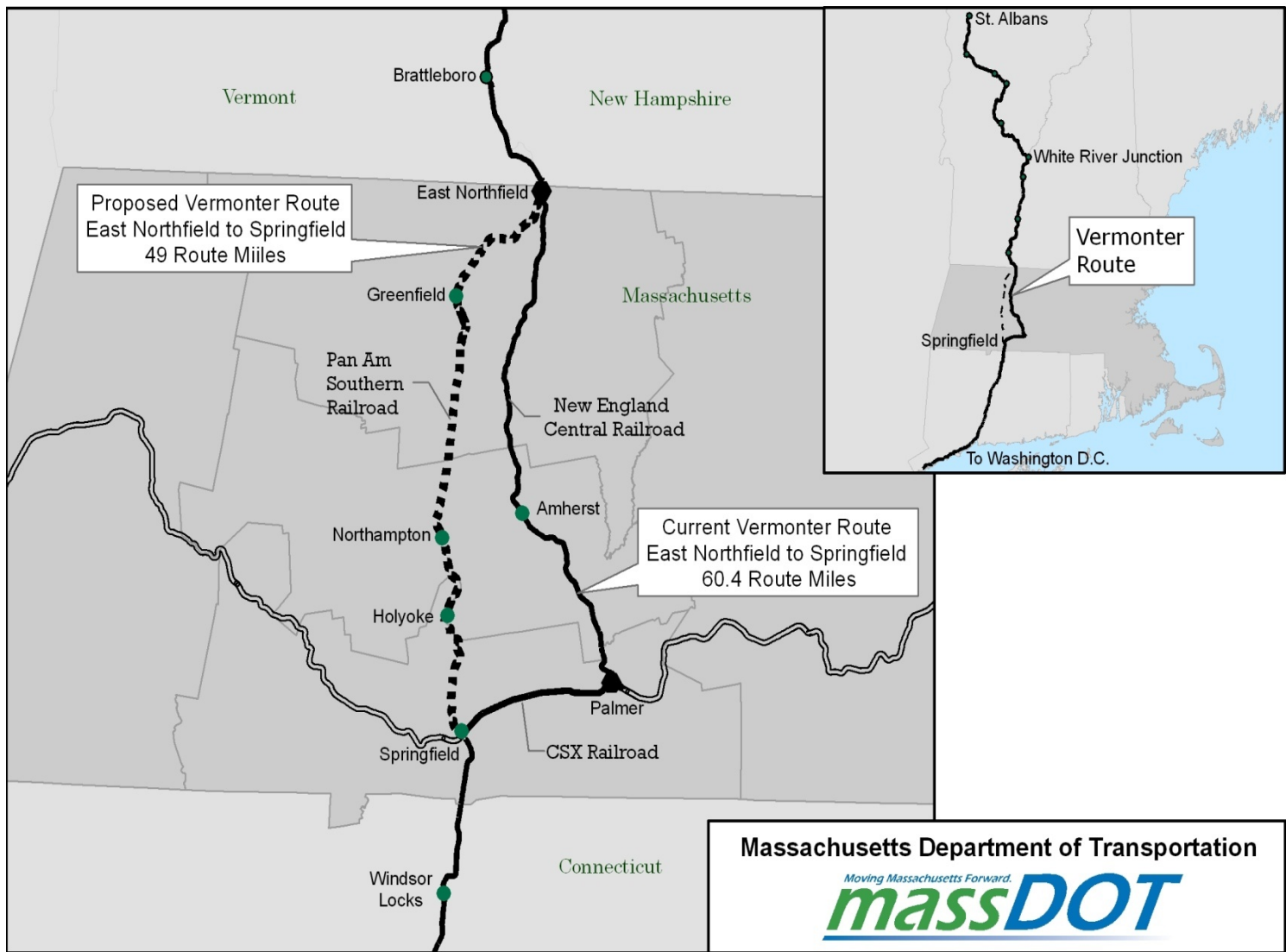
- Application and award is for the 1 daily train and stations in Northampton and Greenfield
- Will restore the Vermonter to Connecticut River Line
- Submitted environmental assessment (EA) and preliminary engineering (PE)
- Existing Transit Service would continue to provide a connection between Northampton, UMass and Amherst
- Included Northampton bike tunnel project - \$2.25 million to as a State match to the project
- Approximately \$70 million
- Project will provide the foundation for additional service



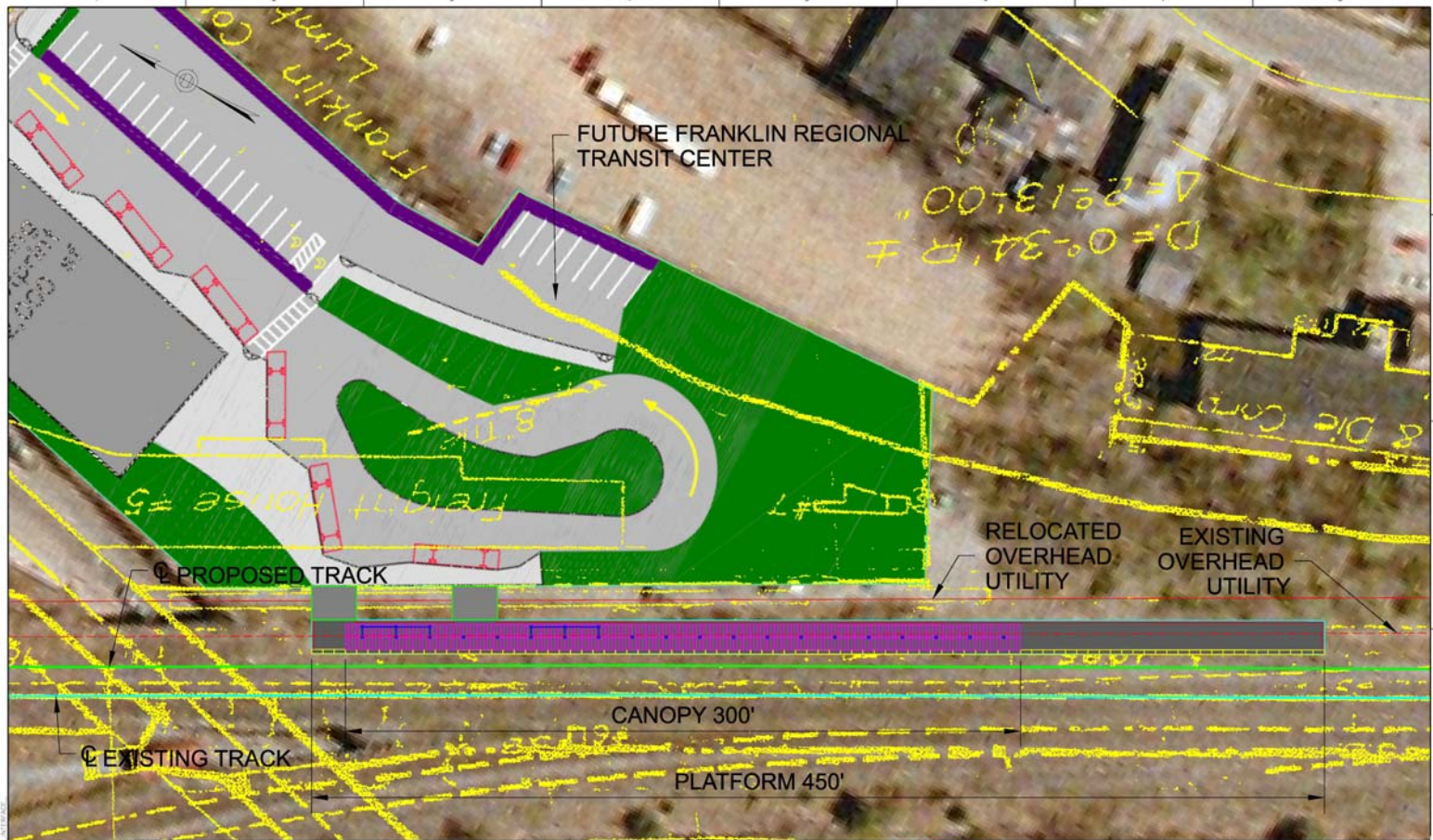
Relocation of Amtrak Vermonter to Knowledge Corridor on the Connecticut River Line



MA Knowledge Corridor Restore Vermonter



Greenfield Station



C:\Projects\1771\1771_0201\1771_0201.dwg
 04/27/2009 11:38:18 AM
 AUTOCAD

HDR
HDR Engineering Inc.

ISSUE	DATE	DESCRIPTION
	05-19-09	PRELIMINARY ENGINEERING

PROJECT MANAGER	PROJECT NUMBER

EOT Executive Office of Transportation
 Knowledge Corridor - Restore Vermont
 Springfield to East Northfield, Massachusetts

PRELIMINARY ENGINEERING PLANS
 GREENFIELD STATION
 STATION PLAN

SCALE: 1" = 20'

DWG. NO. AR-12
 SHEET 29

Implementation Plan

- FRA funding to be received by MassDOT
- Final Design initiated by MassDOT
- Completion of Stakeholder agreements
- Material to be procured by MassDOT
- Pan Am Southern to install material with railroad forces under agreement with MassDOT
- Schedule
 - Final Design initiated by MassDOT
 - Material ordered upon FRA agreement execution
 - Construction anticipated 2010 to 2012
 - Service anticipated late 2012



Related Rail Initiatives

- New Haven – Springfield Rail
- Inland Route – Boston-Springfield-New Haven
- Vermont/NECR Improvements
- Northeast Corridor

