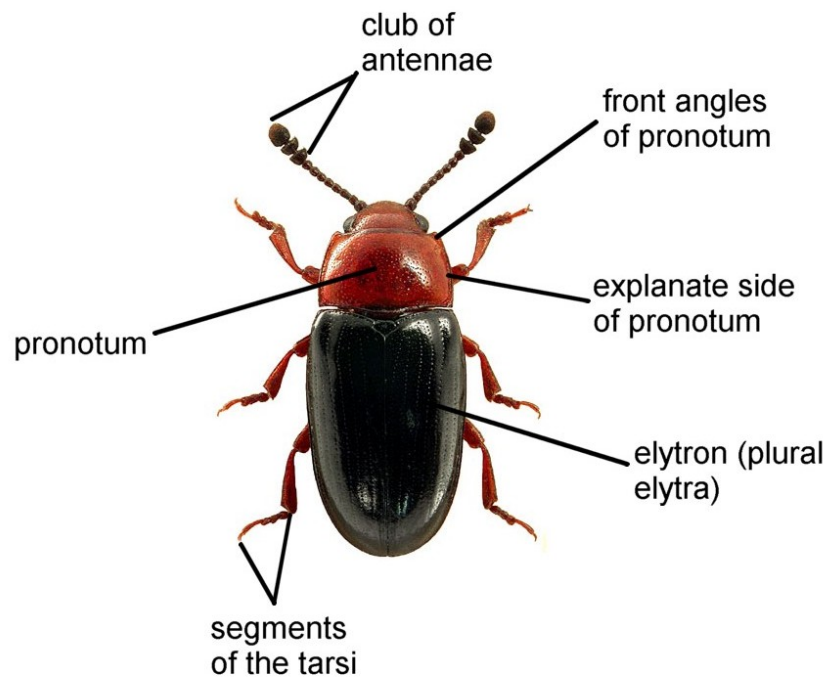


Family Erotylidae



Checklist

From the Checklist of Beetles of the British Isles, 2008 edition, edited by A. G. Duff. (available from www.coleopterist.org.uk/checklist.htm). Currently accepted names are written in bold italics, synonyms used by Joy 1932 in italics.

Tribe DACNINI Gistel, 1856

Genus **DACNE** Latreille, 1796

bipustulata (Thunberg, 1781)

rufifrons (Fabricius, 1775)

Tribe TRITOMINI Curtis, 1834

Genus **TRIPLAX** Herbst, 1793

aenea (Schaller, 1783)

lacordairii Crotch, 1870 (misspelt *lacordairei* by some authors)

russica (Linnaeus, 1758)

scutellaris Charpentier, 1825

Genus **TRITOMA** Fabricius, 1775

bipustulata Fabricius, 1775

Image Credits

The photographs used in this key are reproduced from the Iconographia Coleopterorum Poloniae, with permission kindly granted by Lech Borowiec.

Family Erotylidae

Key to British genera and species, adapted from Joy 1932 by Mike Hackston

- 1 Front angles of the pronotum indistinct; elytra less elongate making the beetle appear rounded and dumpy; length much less than twice the maximum width; tarsi 5-segmented (appearing 4-segmented as the fourth is hidden by the third).

.....***Tritoma bipustulatus***

Rare species in England in fungal growth on trees. Length 3-4 mm.



Front angles of pronotum distinct; elytra more elongate so that the length is more or less twice the maximum width or more; tarsi with four or five segments.[2](#)

- 2 Club of antennae more compact; elytra black with a variable reddish mark at the shoulder; tarsi 5-segmented, all cylindrical; pronotum with at least the base black. Length 2.5-3 mm. Genus **Dacne**.3



- Club of antennae less compact; elytra uniform in colour; tarsi 4-segmented, the third one divided into two lobes; pronotum completely reddish. Length 2.7-7 mm. Genus **Triplax**.4



- 3 Head and pronotum reddish to black; front margin of pronotum broadly red; explanate side of pronotum broader.

..... ***Dacne bipustulata***

Southern England northwards to Yorkshire; local species in fungal growth on trees



Head and pronotum black; front margin of pronotum very narrowly red; explanate side of pronotum narrower.

..... ***Dacne rufifrons***

Southern England northwards to Yorkshire; local species in fungal growth on trees



- 4 Elytra distinctly bright bluish-black; head red, antennae black. Length 2.7-4.5.
..... ***Triplax aenea***
Very local species in England



Elytra black.5

- 5 Hind margin of pronotum with a slight ridge; elytra more or less parallel-sided; antennae black, sometimes paler towards the base.6

Hind margin of the pronotum without a ridge; elytra more distinctly narrowing towards the apex; antennae black with segments 1-4 paler; abdomen under the elytra red. Length 4.0-5.5 mm.

..... ***Triplax scutellaris***

Very rare, listed by Joy from Durham



- 6 Head red; abdomen underneath elytra red; length 4.5-7.0 mm.
..... ***Triplax russica***
Local but widespread



- Head dark brown-black, sometimes only at the sides; abdomen underneath the elytra black; length 2.7-4.5 mm.
..... ***Triplax lacordairii***
Very rare in south eastern England