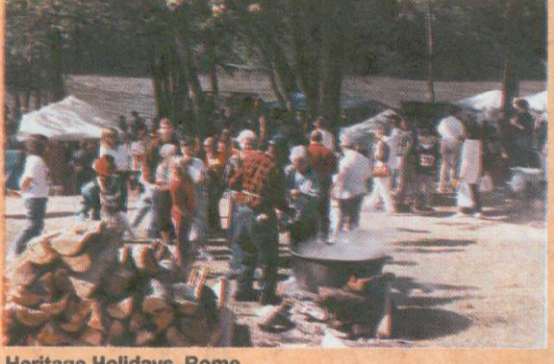
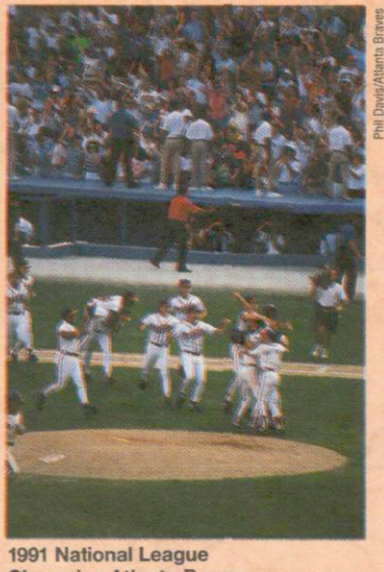


Georgia



1992-93
DEPARTMENT OF TRANSPORTATION
OFFICIAL HIGHWAY AND TRANSPORTATION MAP
© 1992 GEORGIA DEPARTMENT OF TRANSPORTATION



For Information

STATE GOVERNMENT INFORMATION (404) 656-2000
DEPARTMENT OF TRANSPORTATION 2 Capitol Square, S.W. Atlanta, GA 30334
Public Information Office (404) 656-5267
Map Sales (404) 656-5336
24-HOUR OPERATIONS CENTER to report hazards and general maintenance needs on the State Highway System (404) 254-6227
Toll free 1-800-722-6617
DEPARTMENT OF NATURAL RESOURCES 205 Butler St., S.E. Atlanta, GA 30334 (404) 656-9500

Game and Fish Division (404) 656-3523
Parks, Recreation & Historic Sites Division (404) 656-2753

DEPARTMENT OF INDUSTRY, TRADE AND TOURISM
Tourist Division P.O. Box 1776 Atlanta, GA 30301-1776
Map Sales (404) 656-3590

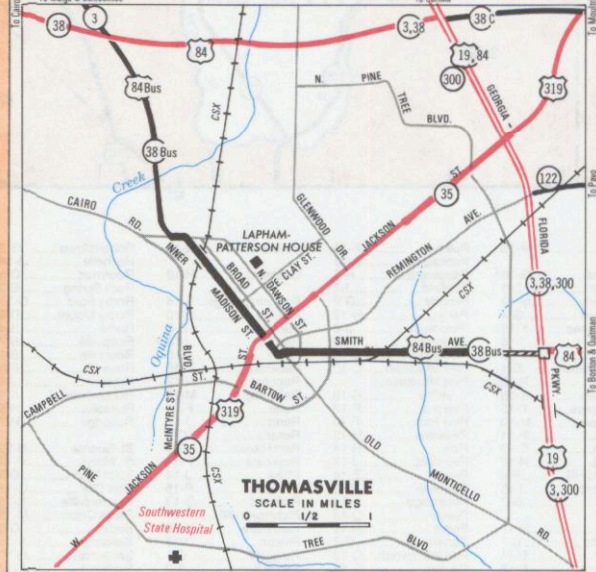
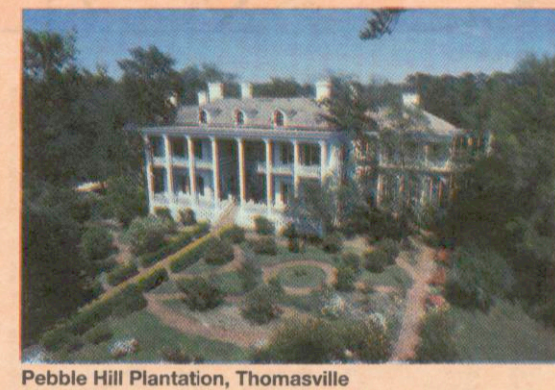
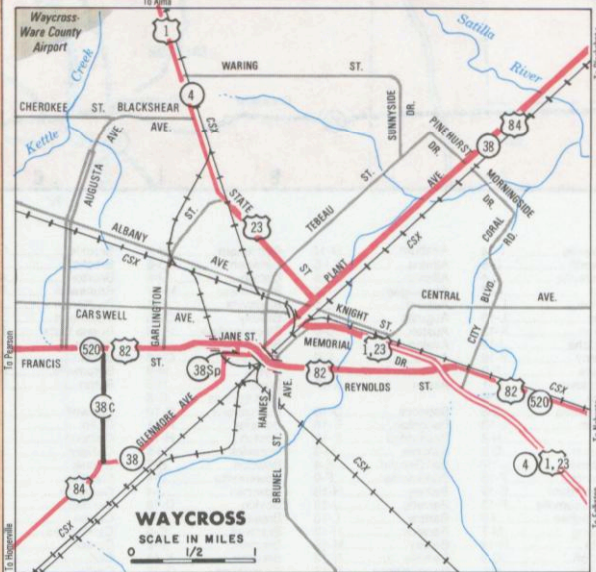
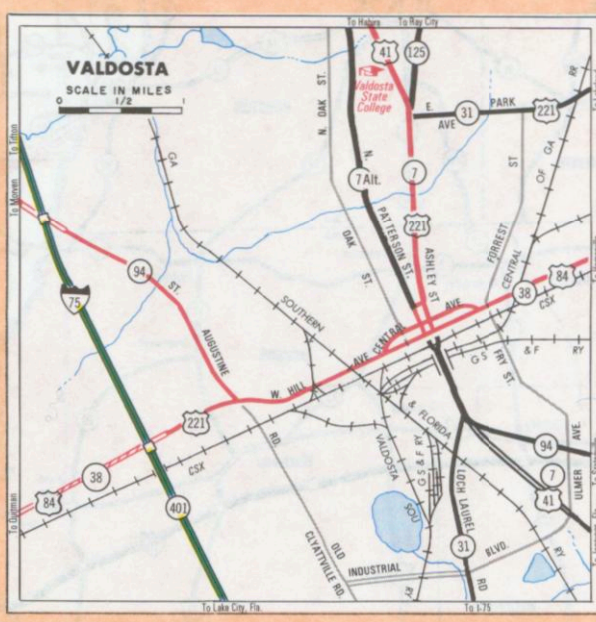
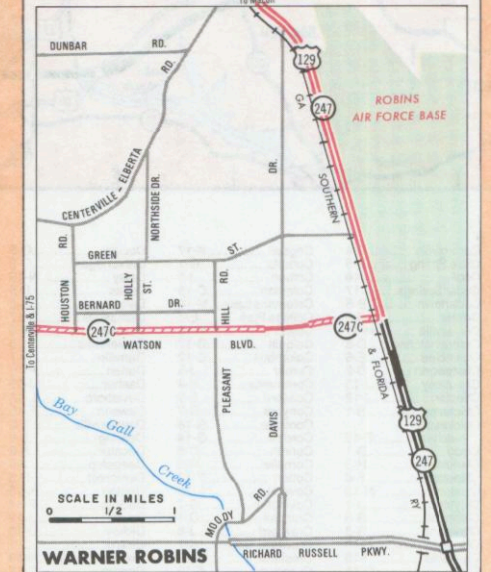
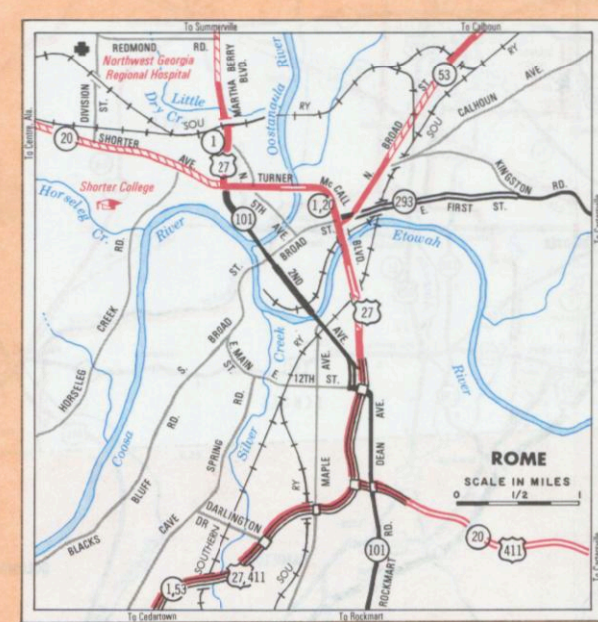
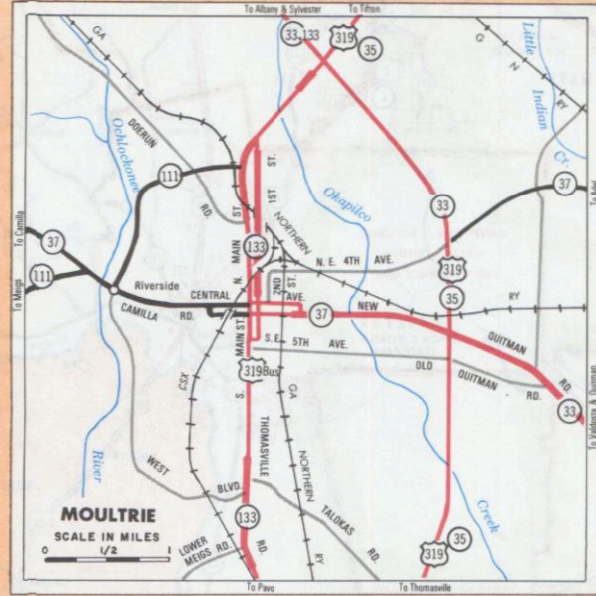
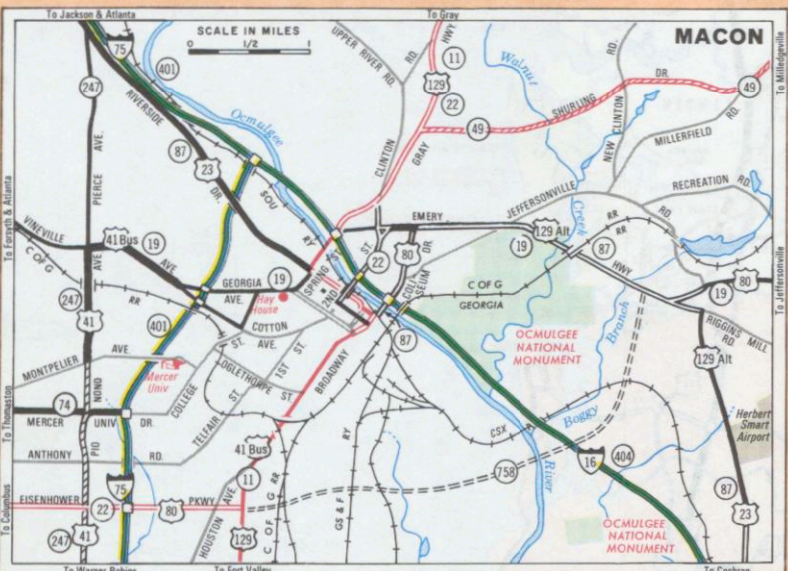
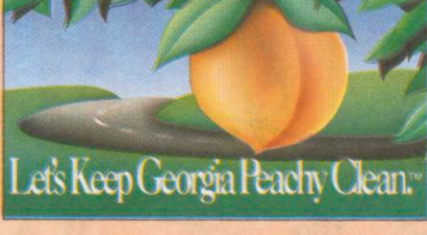
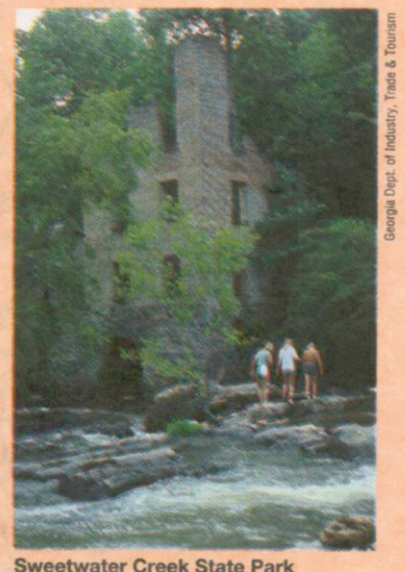
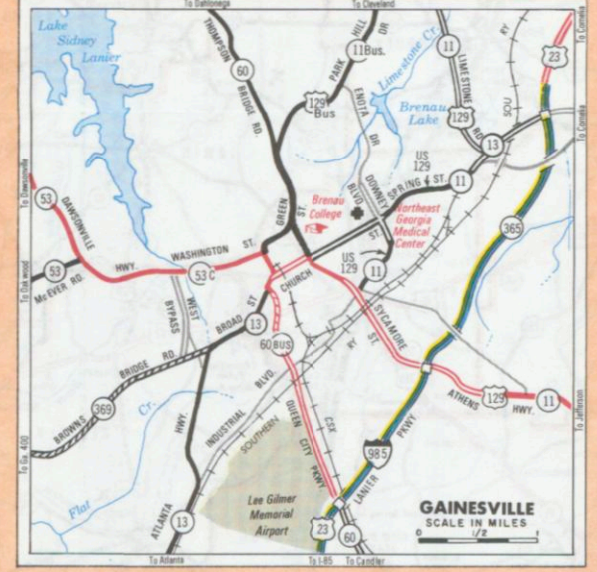
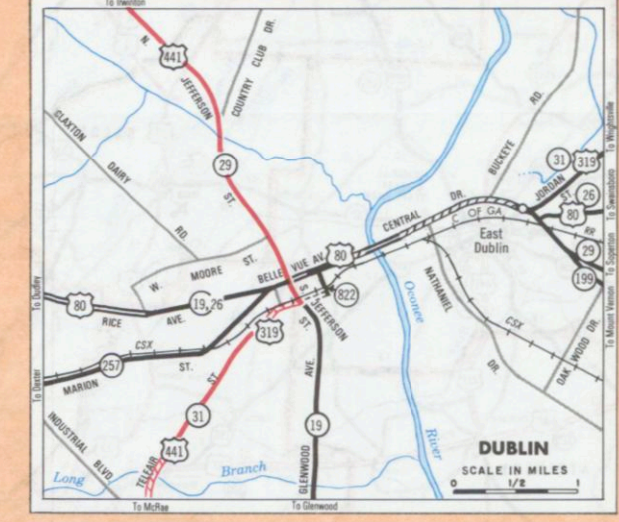
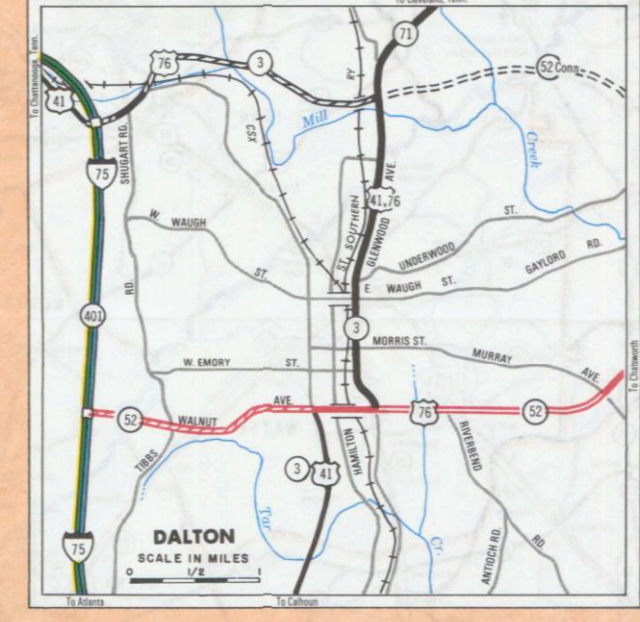
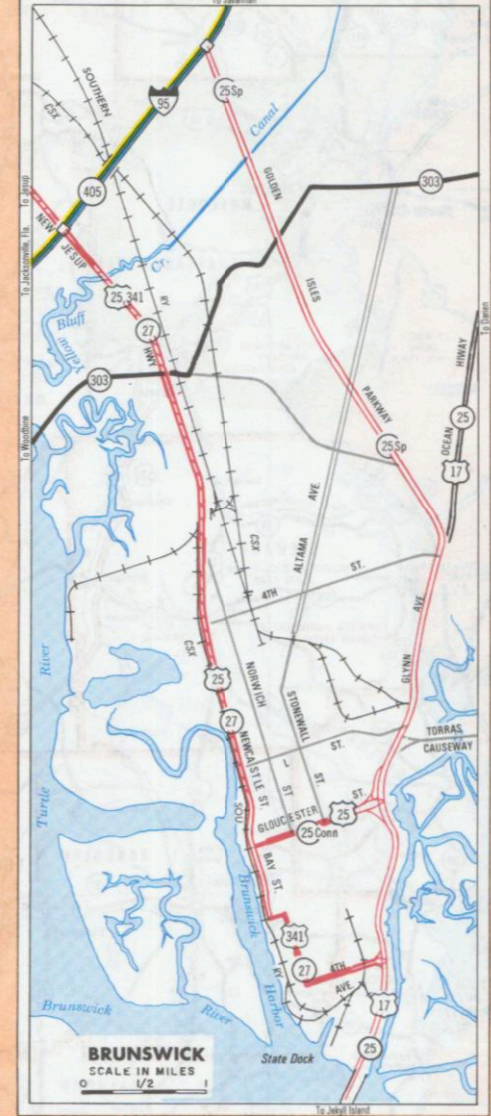
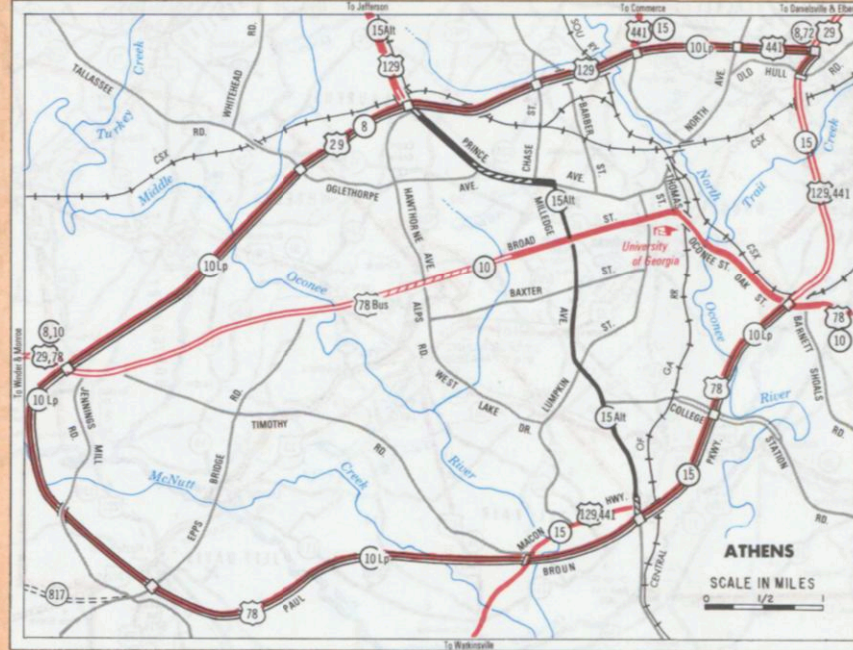
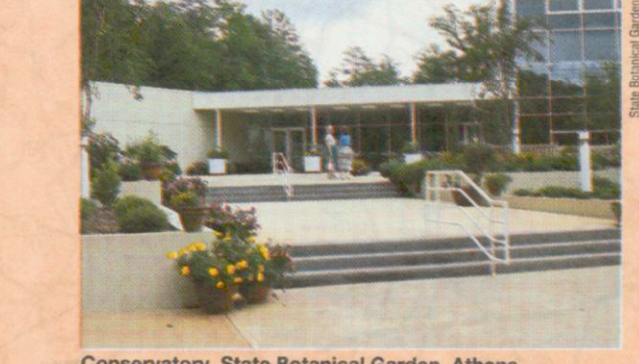
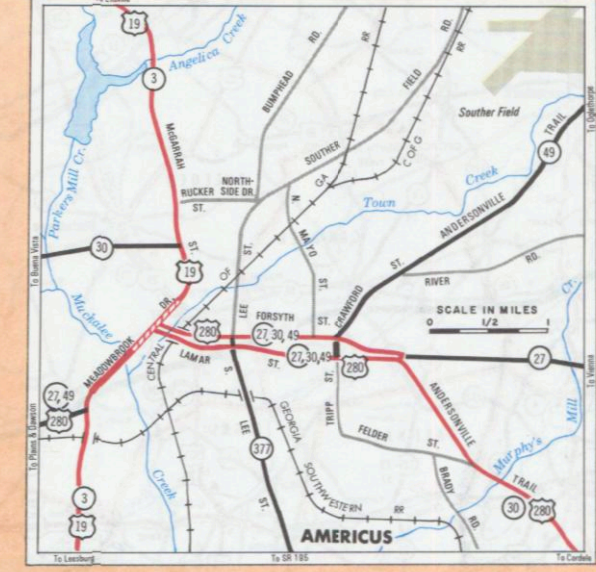
JEKYLL ISLAND AUTHORITY 375 Peachtree St. Atlanta, GA 30302 (404) 524-3636
LAKE LANIER ISLANDS AUTHORITY 6950 Holiday Rd. Lake Lanier, GA 30058 (404) 945-6701

STONE MOUNTAIN MEMORIAL ASSOCIATION P.O. Box 778 Stone Mountain, GA 30086 (404) 498-5600

GEORGIA AGRICULTURE DEVELOPMENT AUTHORITY P.O. Box C Tifton, GA 31793 (912) 386-3344

U.S. FOREST SERVICE 1720 Peachtree Rd., N.W. Room 650 Atlanta, GA 30306 (404) 347-2384

U.S. DEPARTMENT OF INTERIOR 75 Spring St., S.W. Atlanta, GA 30303
Fish and Wildlife Service (404) 331-3594
National Park Service (404) 331-5187



Sale of this map is strictly prohibited unless prior approval has been obtained from the Georgia Department of Transportation.