

TALLOWA CONTRACT SETS RECORD

Leighton Contractors' N.S.W. Branch has recently been awarded the largest single contract in the Company's 23 years, the \$11,250,000 Tallowa Dam, Civil Contract No. 3 in the Shoalhaven Water Supply and Pump Storage Power Scheme for the Metropolitan Water Sewerage & Drainage Board and the Electricity Commission of N.S.W. This contract is also the largest let to date by the Water Board, and will be executed to the designs of and under the supervision of the Snowy Mountains Engineering Corporation.

The contract covers the construction of a 1,750 ft. long mass concrete gravity dam, with 1100 ft. of overflow Spillway, containing 400,000 cubic yards of concrete. It lies at the junction of the Shoalhaven and Kangaroo Rivers, with the dual purposes of storing water, and diverting it back to the Bendeela Power Station on the Kangaroo River. From here it will be pumped up to the Bendeela Pondage and Kangaroo Valley Power Station; thence again up to the Fitzroy Falls Dam on the escarpment 2,000 feet above. For peak power generation, part of the water can be gravitated back through the power stations, and pumped up again on base load.

The project will involve a number of "firsts" for Leightons; the processing of 600,000 tons of highest quality river gravel and sands for concrete aggregates in a new plant incorporating scrubbing, sand classifying and dewatering, covered stockpiles, and automatic proportioning reclaim system; batching and mixing of 160 cubic yards of concrete per hour, including chilling system to ensure maximum placed temperature of 65°F; provision of access trestle in Bailey bridging for semi-trailer units carrying two 4 cubic yard concrete buckets each weighing 10 tons when full; provision of crane trestle and two FAVCO 1500 traversing tower cranes to swing the 10 ton buckets into position for discharge. Detailed planning is underway in Sydney Office, and works will commence on site early in August. The contract period extends 3 years to 31st July 1975 but it is planned to complete major works before 31st December 1974.

In previous issues, Leightons activities have been reported on the Shoalhaven Contract C.1, which is now virtually complete. Tenders have closed for Contract C.7 (Fitzroy Falls Dam and Channel) and talks are underway with the S.M.E.C. Still to close are Contract C.5 (Burrawang Pump Station, Channels and Tunnel) and C.6 (Bendeela and Kangaroo Power Stations, Pipelines, Tunnel and Shaft).

As at time of writing, staffing of the new contract will be as follows:

Project Manager	— Ken Crane (Ex Fluor, Copeton Dam)
Asst. Project Manager	— Hugh Willans
Section Engineers	— Leff Berezovsky, — Tom Day

S.M.E.C. staff are:

Senior Resident Engineer	— Barry Gale
Contract Res. Engineer	— George Donohue



Artist's impression of the completed dam.

COMMUNICATIONS CONFERENCE

On the evening of Friday July 21st, eighty eight of the company's executives gathered at the Leura Motel, Leura for the 1972 Conference. The theme for the two day session was "communications".

In a large and growing organisation such as ours it is essential that we all are fully acquainted with the company's objectives and methods and our individual roles within this organisation. The objective of the conference was to explore these aspects and to determine if any adjustments should be recommended to our management.

In spite of confusion from petrol and airport staff industrial disputes, the fifty interstate visitors were settled into the motel, together with nearly forty from N.S.W. and Head Office, in time for dinner on the Friday evening. It was a real back-slapping affair — as so many people had not seen each other for a long time — or not at all.

EDITORIAL STAFF

G.P. Castieau	Editor, Sydney Office
I. Dodd	Melbourne Office
L. Blood	Canberra Office
D. Young	Brisbane Office
Mrs. K. Creagh	Perth Office
M. Chambers	Bankstown Office
H. Chariton	Sydney Office

In a blaze of beautiful winter sunshine, the conference got off to a flying start the following morning and continued to be both active and productive until it broke up the following afternoon.

The weather was certainly on our side and it was generally agreed that the surroundings and accommodation were of the first order.

Thirty-four fearless golfers braved the snow-white frost on the Sunday morning to play a sparkling round of golf. In fact, the standard of play was so high the judges felt that every player deserved to win a trophy. Other less hardy people played tennis, some, who are probably still boasting about it even went swimming in the motel's heated pool. Everyone enjoyed the clear, unpolluted mountain air and sunshine and in spite of the demands of the conference found it an enjoyable two days.

The findings of the various discussion groups presented to the full conference showed the scope and depth of the deliberations and the high standard of individual contributions necessary to achieve these resolutions. The results of implementing those findings approved by the Board and Management can only improve the functioning of the company and communication between us all.

The general feeling amongst the delegates was one of sincere satisfaction and a desire to get together on a similar scale next year.



Malcolm Yell with a captive audience.



Brian Melloy lays it on the line.

U.S. VISIT

In preparation for final planning of the Tallowa Dam Contract, a flying visit was made to related projects, and to equipment suppliers in the United States by:

Brian Tapper: Director of Engineering, H.O.
Harry Higgins: Plant Manager/Australia, H.O.
Gerry Osborne: Construction Manager, N.S.W.

Brian Tapper flew out in advance by way of Suva, Fiji, and was joined by Harry and Gerry at Honolulu. From there the joint itinerary included San Francisco, Seattle, Walla Walla, Lewiston, Spokane, Minneapolis/St. Paul, and Milwaukee, and covered invaluable visits to the Lower Granite Dam, Locks and Power Station (\$U.S.107m contract by J.V. sponsored by Guy F. Atkinson) and to Dworshak Dam (\$U.S.138m contract by J.V. sponsored by Dravo Corporation); also to the home of Koehring in Milwaukee.

From Minneapolis travel was disrupted by a strike of the regional airlines pilots, by Dominion Day in Canada on the Monday and by Anniversary Day in U.S. on the Tuesday. Brian Tapper flew back via Denver, Portland and San Francisco, while Gerry Osborne returned a week later after visiting Bruce Falls Nuclear Power Plant, Ontario, Truman Dam, Missouri, Dallas Ft. Worth Airport, Texas; Dempster Dam, Denver; and Los Angeles. Harry Higgins also returned at the same time, having visited other Koehring Plants, Caterpillar at Peoria, Johnsons at Champaign, and looked at used dam building plant available from the Mt. Shasta area.

Highlights of the visit were:

- * The courteous and helpful attitude of all the American engineers to whom we were referred.
- * The staggering scope of the very large U.S. projects visited.
- * The very high cost of labour, which produces what seems expensive equipment to save just one man.
- * To see in practice the problems and requirements we face at Tallowa.

There is no doubt that all three gained tremendously in their appreciation of modern methods and equipment, limited only by the time available.

N.S.W. CONTRACT NEWS

FACTORY EXTENSIONS – JOHN LYSAGHT (AUST) LTD.

Work commenced at the beginning of May on a 55,000 square ft extension to Lysaghts Works at Chullora. Two bays 75' wide by 375' long will increase the size of the Works by 70% to accommodate part of Lysaghts Newcastle operation.

Diversion of a 72 inch dia. stormwater line together with extensive site preparation were completed to enable steel erection to commence in early July.

The heavy portals carry 10 ton and 20 ton cranes for handling steel coil from rail wagons inside the building.

The job, due for completion October 1972 is in the capable hands of Civil Foreman, Ivan Turner and Building Foreman Jack Dart. Project Manager is Jeff Merrikin.

NORTH ROCKS

In the minds of our site personnel North Rocks should have been named North, South, East and West Rocks and hard solid rock at that. After battling bad weather and the forenamed rock for eight months, the large subdivision for the War Service Homes on the northern outskirts of Sydney is approaching completion.

Besides roadworks, we are also carrying out sewer and watermain construction. Some of the lines are trenched into solid rock down steep slopes and then plunge 30 feet down vertical cliffs. Other features are the provision of under road conduits at frequent intervals to ensure that no holes are dug in the new road and our retention of as many trees as possible.

The area is undulating and heavily timbered and the finished subdivision will provide some very attractive building blocks.

Knobby Clark has set himself up with all the home comforts as usual and has been troubled with frequent nocturnal visitors, commonly called burglars.

The next door Muirfield Golf Club's car park gets steady competition from us with our normal gleaming immaculate plant plus two Fairlanes, two Fairmonts and an Alfa Romeo.

Site personnel include Peter Halpin, George Martin, Knobby Clark, Paddy Carr, Pat Dawson and Peter Della-Pietra.



New road almost completed through what was once a deep gully.



The Thin Grey Line as a sewer line goes through hard rock.

ANDCO AUTOMOTIVE PARTS PTY. LTD.

Carter Street, Lidcombe has witnessed considerable activity in recent months as work proceeds on this \$270,000 D. & C. automotive spare parts warehouse and office block.

The warehouse is 35,000 sq. ft. of masonry walled, asbestos cement roofed space and the office is a two storey, 5,000 sq. ft., partially air-conditioned frontal feature, all due for completion in September.

Bill Shanahan is the General Foreman and has done his customary job of a little bit of his blood in each brick and a little bit of his boot, "where needed".

Other personalities involved in yet another client satisfied Leighton's job are Len Charlton, Project Manager; Paul Norburn, Project Engineer; John Grant, Quantity Surveyor and Don Clunie, Plumbing Foreman.

THE SOUTHERN SCENE

After a long drought the estimators now believe there is water in the well. Although the value of work won is not great the effect on flagging spirits has been quite remarkable and Ken's face occasionally cracks a smile.

Recent successes include —

EXCAVATION AND SITE WORKS FOR FLOAT GLASS PLANT AT DANDENONG

A hole of approximately 60,000 cubic yards is to be excavated in water bearing sand and the de-watering maintained until the construction of the main foundation has been completed under a separate contract. The value of the job is approximately \$200,000 and is scheduled for completion in about 7 weeks.

Project Manager — Mike Filipesco
Surveyor — Jeff Sharp
Foremen: — Bill Whitechurch
— Joe Larobina

SCHOOL OF RADIO BUILDING' APPRENTICES' ACCOMMODATION AND RECREATION CENTRE AT R.A.A.F. BASE, LAVERTON

A large two-storey building complex of insitu reinforced concrete and precast prestressed floor slabs with the normal Department of Works high detail finishes.

The site staff have been appointed and work is underway on the earthworks and preliminary plumbing. Contract value is \$4,000,000 and is due for completion in 84 weeks.

Site Manager — Joe Cutcliffe
Asst. Site Manager — Laurie Clark
Plumbing Supervisor — Lyle McPherson
General Foreman — Ted Harper
Plumbing Foreman — Norm Perks
Surveyor — Frank O'Brien

DROMANA ROSEBUD RISING MAIN

Approximately 30,000 ft. of cast iron and asbestos cement sewer rising main to be laid in water bearing sand. The site of the works has been the centre of a recent controversy between the conservationists and local government over the removal of ti-trees along the foreshore of Port Phillip Bay. It may be that regulation kit for construction staff will be hard hat and riot shield.

Value of Contract — \$250,000
Completion Time — 26 Weeks.

GOODBYE, JIM HENDERSON

A gold watch was presented to Jim Henderson on 29th June 1972 to mark his retirement from the Company's active list.

Jim and his wife left Aberdeen, Scotland and travelled to Traralgon, Victoria in 1952 to join their two sons who had arrived some two years earlier. His first association with the Leighton organisation was at Traralgon where in September 1953 he joined Leighton Pty. Ltd. as a Foreman Carpenter erecting prefabricated aluminium schools. The projects on which Jim has worked cover a large area of the Australian country side and range from an office and store building at Woomera to a drive-in at Hobart. His most recent job was assisting the QS staff on the Tullamarine Terminal Complex.

Within the Leighton organisation Jim has worked for Leighton Pty. Ltd., Leighton Homes Pty. Ltd., Leighton Contractors Limited and Leighton Contractors Pty. Ltd.

Norm Woff, a trustee of the superannuation fund, expressed satisfaction that the new scheme enabled Jim to receive a substantially greater retiring benefit than under the original scheme, and presented Jim with his retiring nest egg.

The morning after the presentation get together, Jim collected his new fishing reel and retired to his recently completed country retreat at Metung on the South Gippsland Coast.

The Management and staff extend their best wishes to Jim for a long and happy retirement.



NORTH ROAD PUMPING STATION

One of the longest running civil engineering projects the Company has undertaken has been further extended to enable the mechanical equipment to be installed prior to the final finishes. The project was first covered in Issue No. 6 of the Newsletter when the majority of the below ground works had been completed.

The superstructure of steel, concrete and brickwork has been subsequently completed and the electrical and lift installations made, but the final completion of the Contract is dependent on the installation of the pumping equipment. When the contract is complete the site establishment will have been in place from January 1969 until approximately July 1973 for the princely contract amount of \$1.25 million.

Although the average turnover has been quite modest, the technical expertise gained during the many different phases of the contract has been considerable. The site staff headed by Garry Ash has been involved in a great diversity of operations, experience in which is usually obtained only from a number of widely differing jobs.

The activities covered include piling, slip forming, rock excavation in shaft and tunnel, caisson sinking, shaft lining and building construction, to name but a few.



The completion of the major portion of the contract was the occasion for an inspection by the Governor of Victoria, His Excellency Major-General Sir Rohan Delacombe, K.C.M.G., K.B.E., C.B., D.S.O., K.St.J. and the Chairman of the Board of Works, Mr. Croxford.

QUEENSLAND NEWS

OFFICIAL OPENING — KEMP PLACE

The 10th July saw the Kemp Place Tunnel and Loop officially opened by the Minister for Main Roads, the Hon. R.E. Camm, M.L.A. He said that despite early problems and unseasonal rain, the 480' two-lane tunnel and 220' diameter loop complex was one of the finest in design and finish he had seen on any of his world tours.

When the total project is completed at the end of the year, the Company will have made a major contribution to relieving Brisbane's ever growing traffic problems.

Special features of the project include non-glare ceiling mounted lights, a non-reflective paint system and special solar screens which act as light diffusers at the entrance to the tunnel. Sensors are installed in the pavement to detect any traffic stoppages and these are connected to the exhaust system.



Official cars moving through tunnel at Kemp Place.

ADELAIDE STREET OFFICE BUILDING

Demolition of the existing buildings occupying the site of the planned first stage of development of property between Adelaide and Ann Street, owned by Leighton Holdings, is now well advanced.

Approval by the Brisbane City Council of the 23 storey building to face Adelaide Street has been sought in two stages. Approval of the first stage, the basement and ground floor with open plaza, is imminent and this should allow the project to get off to an early start. Detailed drawings and specifications for the second stage approval are now well under way.

The first and second floors will provide parking for approximately fifty cars and then follow nineteen typical floors of office space.

The building, to be constructed of reinforced concrete with precast concrete facade panels, will be serviced by five lifts and will be fully air-conditioned.

Air conditioning plants are located in the basement and at the twenty-third level. The value of the project is approximately \$4,000,000 and completion is being scheduled for the end of next year.

Project Personalities

Project Manager — John Reeves
Project Engineer — John Stephens
Foreman — Oscar Ohlson

RIDGEWOOD DEVELOPMENT

Just a short ten months since the doors were opened for business "Ridgewood Heights" has emerged as one of the prestige suburbs of Brisbane — now named ALGESTER. Productivity, backed by sound sales performance, has brought this 1300 acre residential subdivision to the forefront in popular appeal.

To date, 280 homesites have new owners and a force of 25 building companies are actively engaged in home construction. 75 homes are completed or well on the way; 19 families are in residence and are busily taking up forks, spades and rakes.

Construction of Phase C at a cost of approximately \$520,000,00 is now well advanced. Phase C involves the construction of roadworks, drainage, sewerage and water reticulation to 323 residential allotments and provides access to the future State School to be constructed within the development. The completion date for Phase C is January, 1973.

Supervision of this development is in the hands of:

Project Engineer — C. Mouncey
Foreman — S. Silvestro
Surveyor — B. Burrows

A feature that strikes most enquirers is not only the high standard of homes but the variety so apparent in design — it is hoped this can be maintained.

NOTES FROM THE WEST

COMMERCE AND SOCIAL SCIENCES BUILDING

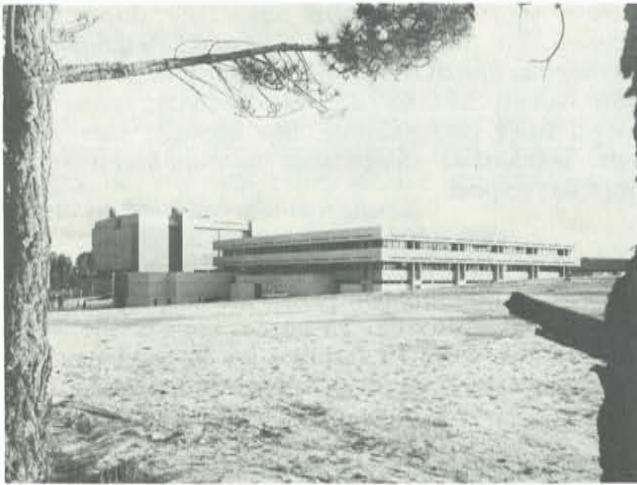
The recently completed Commerce and Social Sciences Building for the Western Australian Institute of Technology at Bentley, consists of a three storey post-tensioned structure, with a large central courtyard and Japanese Garden.

The \$1 million project was designed by Architects, Cameron Chisholm and Nicol to blend in with the architecture on the Campus and is a grey off-form concrete structure externally with white bush-hammered precast concrete sunhoods and retaining walls.

The first and second floors of the building consist mainly of tutorial rooms and administrative offices whilst the ground floor contains lecture theatres, workshop and language laboratories and an external limestone amphitheatre.

Staff:

Project Engineer — Chris McLaughlin
Quantity Surveyor — Tony Goodchild
Foreman — George Isitt



Commerce and Social Sciences building



An artistic view of work in progress on the Reserve Bank project.

FROM THE NATIONAL CAPITAL

R.A.A.F. BASE, FAIRBAIRN – AIRMEN'S MESS

This building was handed over to the R.A.A.F. on Friday 28th July. It provides mess facilities to replace the previously overloaded quarters and incorporates the most modern food handling equipment.

The dining room will cater for a maximum of six hundred people at one sitting whilst the adjacent kitchen allows for the preparation of the food in quite a spacious area. All kitchen equipment is made entirely from stainless steel, manufactured in Canberra for the first time.

The building incorporates a butcher's shop for cutting up and preparation of the meat and also a large ration storage area adjacent. All doors are fitted with air curtains for fly control and also to maintain the inside air at a constant temperature, a most important consideration in Canberra.

The dining room features a "Woodtex" ceiling with drop panels approximately twenty feet in height.

White cement face bricks were used throughout, the internal walls also being face brick, unpainted. The result is excellent and is a departure from the standard creams and reds usually used for this purpose.

When landscaping of the surrounds is completed, The R.A.A.F. will have a building to meet all foreseeable functional requirements.



Front view of building.



Composite photograph of A.N.U. Union Building, A.C.T.

Building on left is the administrative centre of the Union's activities whilst on the right is the Sports Union Building – incorporating six squash courts. The crane is about to lift the connecting link bridge between the two buildings.

SNIPPETS

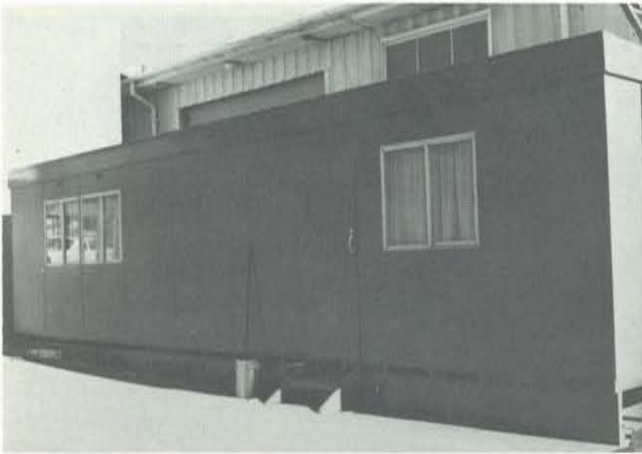
INTERSTATE ARRIVALS

"Curly" Breen and George Coleman have arrived from Melbourne for a short stay to assist with the influx of new work.

Permanent transfers to the Canberra staff were Paul Dignam (Victoria), Peter Wells (Western Australia), and Graham Bartholomew (Western Australia). Graham's wife, Jane has also commenced duties in the accounting section.

John and Pauline Satchell have increased their family with the recent arrival of Brooke Hope. Congratulations!

Nick Fominas has looked around at all the happily married men in Canberra and decided to take the plunge. Having seen Karen, his fiancee, we certainly don't blame him.



DOING IT THE HARD WAY

Extensions to the Fyshwick Office, Canberra. The gay curtains were made by our girls in their lunch hour.

VICTORIA

Terry Clair, previously the Victorian Construction Manager, has been involved in a "sideways arabesque" and has now taken possession of the office with a cupboard in the corner, assuming the position of Design and Construction Manager, Victoria. With a new pair of blue suede shoes and reinforced door knocking knuckles, great things are expected from this quarter.

Lionel Borton is expected back at work shortly after fulfilling the prediction made in Issue 13. Congratulations Lionel and welcome back.

The building staff will feel that they have lost their right arm when Doris Conrad leaves for a three month round Australian jaunt. Known as the girl of many hair cuts, Doris will be missed by all, who join in wishing her a most enjoyable tour.

Judith Burge has given up the gay life of the Three Feathers Bar and returned to the fold. Welcome back.

Farewell to Trevor McGinley who has just completed the multi-storey flats at Spring Street, Trevor is joining brother John to give us some extra competition.

Branch Manager Ken Knights, and wife Anne, are currently suffering the bug sorting trauma in their new house. It seems that Ken cannot make the dishwasher work, but nobody really believes that he wants to.

Richard Clarke and Colin Jesse who are currently studying civil engineering at Melbourne University have joined the Victorian Branch on cadetships. Welcome to Leighton and best wishes for the future.

Canberra has scored several more members of the Victorian staff – Steve O'Brien, Paul Dignam, Peter Wells and Curly Breen.

The Melbourne squash scene is now much more competitive with the departure of Curly Breen and the growing handicap of long hair on the Office Engineer.

New Arrival

A daughter to Tom and Jennifer Gregson, and a son to Glen and Caryl Page.

Social Club News

The highlight of the year's activities was a night out at Tiki and Johns Theatre Restaurant which the Leighton group booked one memorable Friday evening. Star performers of the evening were Mike O'Donnell who closely questioned Germaine Greer on the subject of marriage, Laurie 'Octopus' Begg and Frank O'Brien who was last seen doing the rounds of Melbourne's multi-storey car parks trying to find his wheels.

QUEENSLAND

Boat Trip

An enjoyable social night was spent on board M.V. Mirana. Despite the smooth cruising up and down the Brisbane River, there appeared to be a passenger or two rolling with the boat towards the end of the night. A six piece band contributed to the success of the evening; not to mention Des' powerful punch which proved to be a "knock-out".

New Arrival

Lucky fellow on the Gold Coast job is Keith Mitchell who is surrounded on the homefront by three members of the fairer sex since the recent arrival of second daughter, Jodie. Congratulations to Keith and wife, Dawn.

New Staff

Brisbane office welcomes quite a few new staff members this month. In the construction section, engineer Ross Dunning, formerly with Fitzgerald & Williams, has joined our staff. Another new face is that of stenographer Diane Tappenden. Diane recently returned from a ten month world tour and is trying very hard to re-orient herself into a normal office routine. Darryl Jorgensen has joined the 294 Adelaide Street team and John Chapuis, a Frenchman, has added a touch of international flavour to the estimating department.

The accounts sections welcomes new clerk Kerry Townsend, and for those who are wondering who drives the sporty little Cooper 'S' over on the Estate, it's Ridgewood's new Secretary Sandra (Sandy) Hambleton. It is also reported that Sandy is a keen water ski-ing enthusiast.

Following the inauguration of an office in Townsville, three new staff members are welcomed to the Company. Mrs. Karen Byrne as Secretary to Martin Albrecht, Adrian Vanderwilt, Building Estimator and Doug Thurlow as Clerk.

Belated Congratulations

Extended to Malcolm and Dorothy McMillan on the arrival of their baby son, Nathan, a few weeks ago. No doubt by now young Nathan has given Mac and Dorothy many hours of enjoyment (and insomnia).

W.A.



'Daddy Cool' Waters

Looking just a trifle jaded after his recent journey to the 'Jungles of Timor'.

Artist, Steven Brown

Dianne Rees has recovered from her recent hospitalization and is now working in our Kewdale office while the South Dandalup Dam project is in recess.

Fred Witting is spending a short period in the North West on our Shay Gap project for Goldsworthy Mining.

Jim Filmer is currently on a six months vacation in England visiting all his friends and relations and sending Perth office staff post cards that are causing a few itchy feet.

BANKSTOWN

Richard Worsdall and Pamela Dyson; Kathy Thom and Neil Thornton are recent engagements and further along the boy meets girl line, Gerry and Brenda Osborne produced a baby girl Claire and Eric and Evarne Coote, a baby boy, Callum.

Bryan Bennett hopped over to Indonesia and then finally overland to U.K. We hope to see Bryan return in the future and maybe not alone?

Sandra Gread recently left us for a sojourn to her sister's place in the U.S.A. and from recent correspondence seems to be using some shoe leather.

In keeping with the growth pattern, we welcome Don Heath, Building Superintendent; Alan Knox, Mechanical Engineer; Don Knox, Mechanical Draftsman; Phil Steele, Robert De Vries, Mike

Deuxberry, Quantity Surveyors; John Dixon, Building Foreman and Kevin Jones and Peter Cheney, Civil Foremen.

Don't sell your shares! They should be safe for many years to come if the recent results in the N.S.W. Building Foreman and Clerk of Works course is any indication.

Grahame Haddock came on stage at the Department of Technical Education's Annual Presentation of prizes to collect five prizes, culminating in the award for the highest pass in New South Wales. The applause had hardly subsided when Grahame was followed by Eric Winchester to collect the second highest pass award.

Both have performed creditably throughout the three year course and it was pleasing to the Company that two of our younger men were so successful.



Grahame Haddock receiving his awards.



Eric Winchester accepts his prize.

SYDNEY OFFICE

The Social Club is now operating at a high level of activity. Recent functions included a highly successful theatre party to "Jesus Christ Superstar" which attracted over 100 people. At time of going to press, a super observation trial followed by a picnic is scheduled for 20th August.

The winter Leighton XI (Soccer) is emulating its illustrious cricketing counterpart with a series of brilliant victories over such combinations as Atlas-Copco and G.E.C. A smooth blending of skill and vigour plus provision of impartial referees are the ingredients of success.