

JDEdwards®

SOFTWARE FOR A CHANGING WORLD™

J.D. Edwards World Solutions Company
World Headquarters
8055 East Tufts Avenue, Denver, Colorado 80237, USA
800 727 5333
303 488 4000

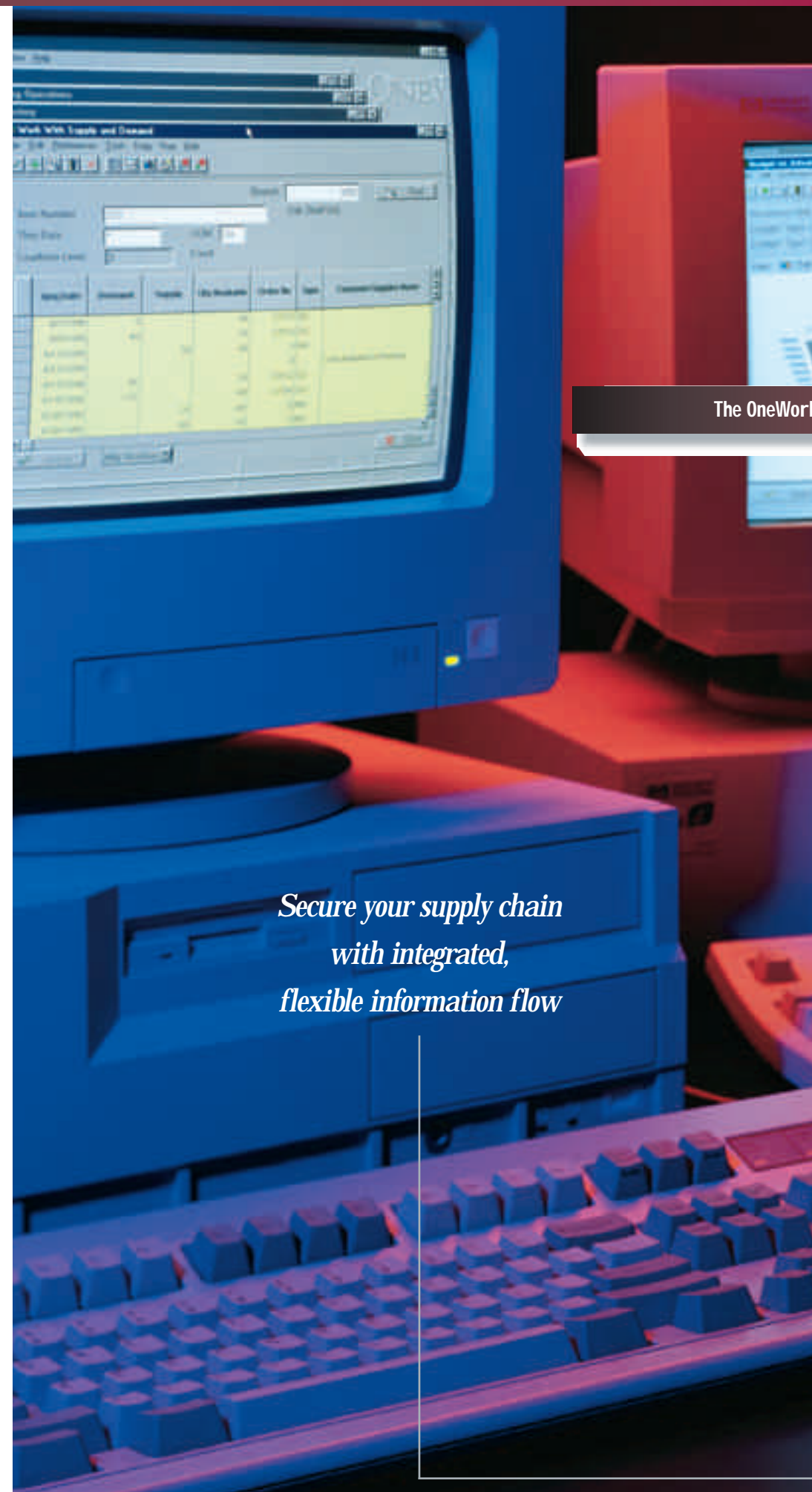
J.D. Edwards U.K. Ltd.
Serving Europe, the Middle East, and Africa
Oxford Road, Stokenchurch, High Wycombe
Buckinghamshire HP14 3AD, United Kingdom
44 1494 682700

J.D. Edwards World Solutions Company
Serving Latin America and the Caribbean
800 Douglas Entrance, Coral Gables, Florida 33134, USA
305 442 7800

J.D. Edwards Hong Kong Limited
Serving Asia Pacific
Unit A, 24th Floor, Entertainment Building, 30 Queen's Road, Central, Hong Kong
852 2844 7400

All information in this brochure pertains to OneWorld Release B7B.
The materials contained herein are summary in nature, subject to change, and intended for general information only.
One or more U.S. Patent Applications are pending for inventions used in the production of OneWorld.

J.D. Edwards is the registered trademark of J.D. Edwards & Company. All other product names used are trademarks or registered trademarks of their respective owners. ©1996 J.D. Edwards World Source Company



The OneWorld ERP_X® Solution

*Secure your supply chain
with integrated,
flexible information flow*

JDEdwards®



*Communicate globally.
Manage locally.*



Winner takes all. The single-purpose plant serving the general-purpose customer is fast disappearing. In its place is the multi-national corporation of networked business units that continually evolve to capitalize on windows of opportunity.

Successful niche marketing

Instead of "wide band" marketing, the global enterprise narrows the focus to niche markets. The objective is to leverage core business competencies to become the supplier of choice for select customer groups. If you win the early rounds of competition, you can dominate the market.

The OneWorld ERP_x Solution

often requires focused factories of dissimilar manufacturing and distribution processes — both within and among your enterprise plants. You have to find efficient ways to manage local business strategies while maintaining your corporate identity.

J.D. Edwards offers Enterprise

Requirements Planning and Execution (ERP_x) to unify diversity. With OneWorld, our unique Configurable Network Computing solution, you can:

- Effectively integrate multiple production modes and distribution channels worldwide
- Simplify operational complexity with network-enabled software that provides a stabilizing foundation for today and tomorrow
- Facilitate communication with your trading partners
- Easily adapt your information system to changing competitive strategies

*Configurable Network Computing™ —
the strategic information architecture
that lets you get back to focusing
on business solutions*

ONEWORLD™

Superior Service — From Your Customers' Point of View

Fragmented markets and shifting customer preferences make it more important, as well as more difficult, to maintain personalized customer service.

Navigate the Quickest Route to World-Class Customer Service

Workflow management is the cornerstone of the J.D. Edwards OneWorld ERP_X solution. You have unparalleled flexibility to cut across functional boundaries for rapid response to your customers.

With OneWorld ERP_X, your customers never get lost in the crowd. No matter how large your enterprise becomes, you individualize service with:

- Multilevel, date-effective customer and item profiles you define to automatically incorporate sales order processing preferences
- Kit processing and configuration management for full prompting of ATO product customization choices during sales order entry
- Online supply/demand inquiry that displays real-time available-to-promise and pulls desired availability dates directly into the sales order

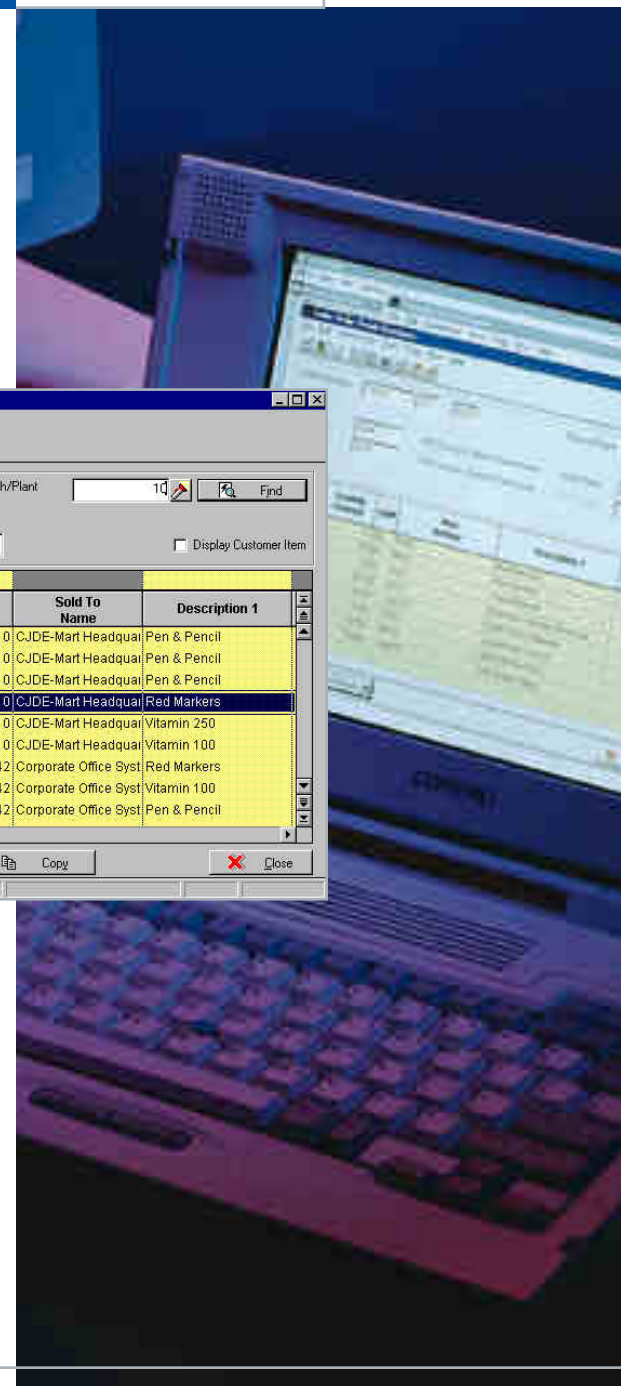
- A powerful customer service workbench for single screen access to all the information you need to answer virtually any customer question about sales order status, order history, product availability, credit, invoicing, and application of payments
- Full multi-national and multi-currency capabilities for contract, delivery, and billing documents in the currency and language of the customer's choice

OneWorld ERP_X manages all order types from the same system, including quotes, blanket orders, transfers, direct ships, and credits. Besides significantly cutting administrative costs, integrated order management easily accommodates the most complex customer requests.

The customer service online workbench provides a single screen "hub" for rapid access to critical information at every stage in the fulfillment process.



Personalize customer service with flexible fulfillment workflows.



Order Number	Or Ty	Order Co	Line Number	Hd Cd	Sold To	Sold To Name	Description 1
23150	SO	00100	1.000		4210	CJDE-Mart Headqua	Pen & Pencil
23150	SO	00100	2.000		4210	CJDE-Mart Headqua	Pen & Pencil
3	SO	00100	1.000		4210	CJDE-Mart Headqua	Pen & Pencil
3	SO	00100	2.000		4210	CJDE-Mart Headqua	Red Markers
3	SO	00100	3.000		4210	CJDE-Mart Headqua	Vitamin 250
3	SO	00100	4.000		4210	CJDE-Mart Headqua	Vitamin 100
2	SO	00100	1.000		4242	Corporate Office Syst	Red Markers
2	SO	00100	2.000		4242	Corporate Office Syst	Vitamin 100
2	SO	00100	3.000		4242	Corporate Office Syst	Pen & Pencil

Profitable, Market-Sensitive Pricing

Advanced pricing and promotion management delivers the flexibility to align prices with strategic customer, market, and product characteristics.

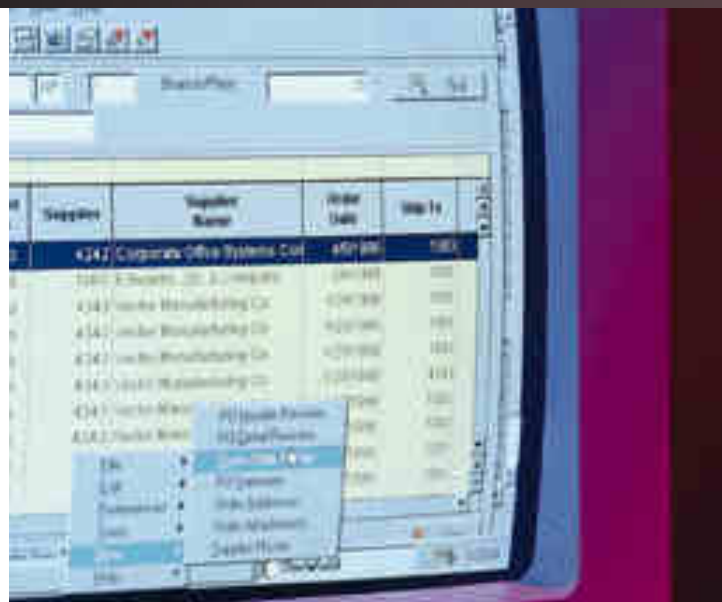
You can streamline management of multiple prices and discounts to cover all sales situations, including those that involve overlapping promotions, deals, special allowances, contracts, commodity-based pricing, rebates, accruals — even free goods.

Portability

Just because a customer has decided to buy doesn't mean you have the sale. At that critical point, you must have a wide array of information available to identify and correct possible order problems right away, whether you are in the sales office or on the customer's premises.

OneWorld ERP_X enables you to download all data and logic required to negotiate and close sales onto a laptop before traveling to a customer site. You simply configure the laptop with all the business rules and data you need to provide immediate answers to customer questions.

Upon returning to your office or hotel, you can connect the laptop to your network to quickly update customer records and submit sales orders.

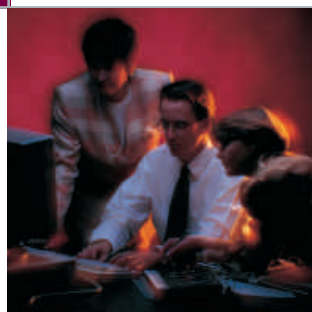


World-class customer service is only one part of the profit picture. You can excel at pleasing customers — and still lose your shirt.

Strip Costs from the Supply Network

OneWorld ERP_X enables you to harness information technology to provide service that satisfies customers with profits that satisfy stockholders.

Balance supply and demand to satisfy customers — without waste.



Just-in-Time Instead of Just-in-Case

Minimizing inventories requires synchronizing the flow of goods within and beyond the plant walls — from material source to product end user.

Optimum “Virtual” Inventories

With OneWorld ERP_X, you facilitate rapid dissemination of supply/demand information throughout your enterprise and with your trading partners. You have access to accurate, reliable data on planned inventory availability at every point in the supply network.

Focused Demand Management

You can define forecast hierarchies to project demand at the customer, customer group, item, and/or item group level that best represents your corporate marketing strategy. EDI-linked point-of-sale information and planning schedules draw information from your retailer partners for increased forecast accuracy. The resulting demand profiles feed directly into requirements planning to drive visibility of demand to every essential fulfillment function within and outside your company.

Single-Pass Planning

OneWorld ERP_X pulls all your enterprise locations and mixed-mode production processes under one worldwide requirements planning umbrella. Unique one-pass processing capabilities enable you to:

- Execute DRP/MPS/MRP for your entire enterprise in a single planning run — regardless of the number and kinds of facility interdependencies
- Easily focus your view on all requirements, or on a selection of items, planning families, and/or facilities as your business needs dictate
- Capitalize on the saving of consolidated purchasing with integration of all inventory and non-inventory procurement activities from quotes to contracts
- Simplify negotiation of replenishment agreements with automatic translation of your requirements plan into advanced demand and shipping schedules for your supplier partners

Precise Inventory Location

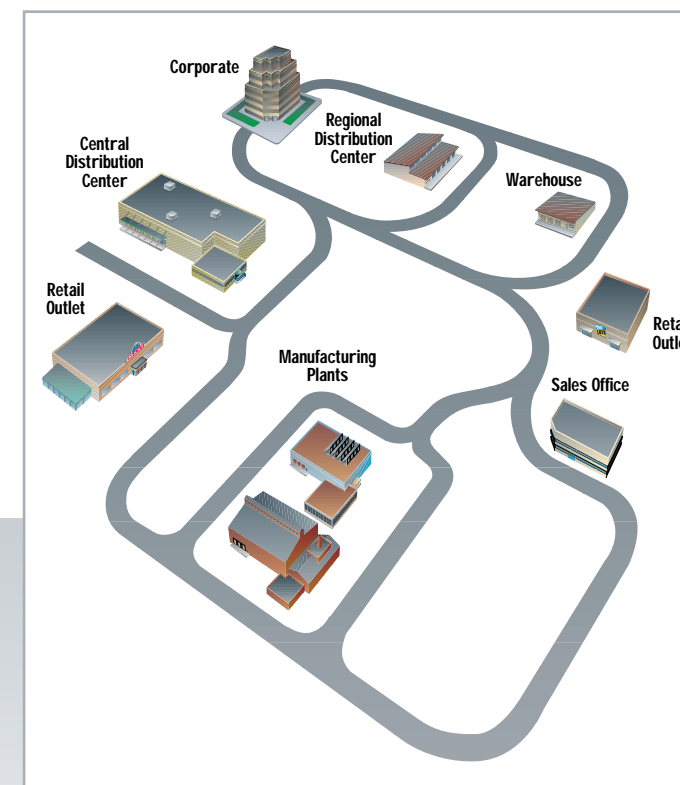
Your customers want to know exactly where their products are and when the shipment will be delivered. You want to contain the costs of material storage and handling.

With OneWorld ERP_X logistics, you automate inventory tracking for pinpoint accuracy at minimal cost.

Multiple item numbers, item cross-referencing, and detailed lot/serial number control permit rapid access to supplier and customer inventory information in their terms. You can assign grades/potencies to material lot numbers and trace lots to a final product and customer or back to a purchase order to identify production runs with a customer or supplier.

You have the option to consume work-in-process material using manual issues, by backflushing at completion or at pay points, by preflushing, or as floor stock. Based on the parameters you define, all issue methods will provide real-time availability updates.

Bar code and radio frequency data collection capabilities allow you to efficiently track product movement on the dock, in the factory, and in the warehouse.



OneWorld ERP_X links you and your trading partners in a seamless information network.

OneWorld — Your World

From WYSIWYG to WYWIWYS

Why settle for "what you see is what you get"? With OneWorld's sophisticated GUI, "what you want is what you see."

You control onscreen data presentation. Simply use pull-down menus and drag-and-drop functionality to:

- Adjust fonts, colors, column sizes, language, and currency for easy-to-read information
- Freeze any column in place to quickly scroll through multiple details without getting lost
- Rearrange columns on the fly to bring information of immediate interest into view
- Access the built-in calculator to compute amounts during data entry
- "Paint" a report format on the screen and let the system automatically set up the logic for real-time data sorting

Put control of the desktop
in the hands of the user for across-the-board
productivity increases

Big Picture

Detach and resize the screen grid to bring all the information to the desktop for the "big picture."

Personalized Views

Save alternate column views and data sorts under electronic file tabs for fast access to information specific to the task at hand.

Sort grid information for your saved views via pull-down menus that walk you through the steps to sequence data.

Notes and Memos

Access item-specific notes and memos by clicking on a system-generated clip icon alert.

Online Graphics

Use online graphics for an immediate pictorial representation of grid data.

Focused Data Selection

Retrieve data easily with entries in one or more header fields.

Additional Assistance

Look for the system-generated search icon, which notifies you immediately if additional assistance is available when you select the field.

Flexible Data Search

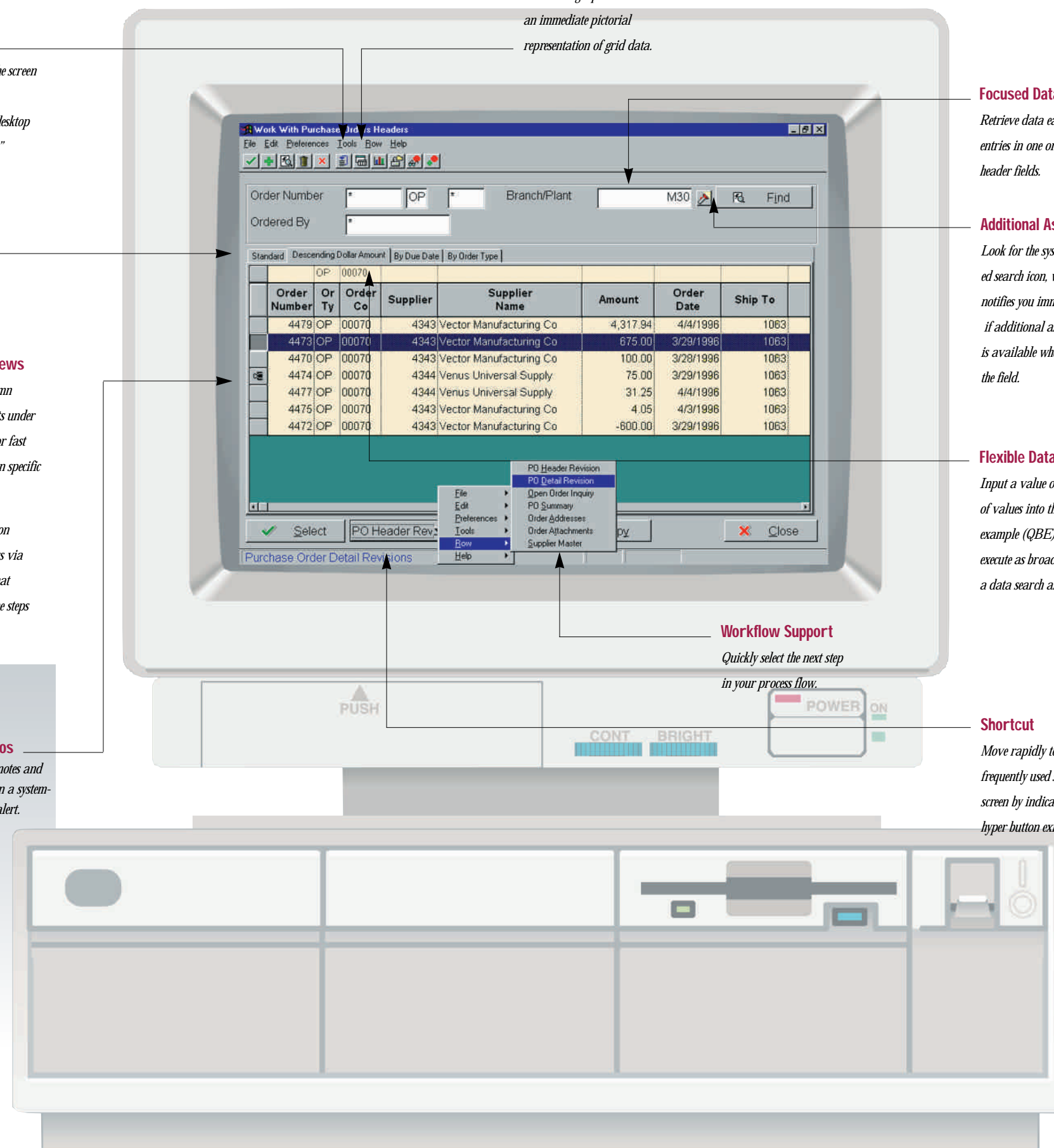
Input a value or range of values into the query-by-example (QBE) field to execute as broad or narrow a data search as you need.

Workflow Support

Quickly select the next step in your process flow.

Shortcut

Move rapidly to your most frequently used secondary screen by indicating it as the hyper button exit.



All-in-One Product Life-Cycle Management

With OneWorld ERP_X, you concurrently manage all enterprise activities associated with a new product release or simple upgrade. Every phase of an engineering change order — from design plans to production, marketing, and distribution strategies — is processed through a single, enterprise-wide product data management system.

Fast-to-Market Product Design and Manufacturing

In the brutally competitive global market, being first doesn't last. Not unless you get your foot solidly in the door of a niche market and remain responsive to your customers.

Product changes speed through your organization with electronic approval routing and system alerts to signal required action.

Once approved, changes are automatically populated into the item master and bills of material for immediate availability to production and sales.



Increase production velocity with seamless integration of product design, production modes, and plant and equipment maintenance.



Describe operations steps visually with online video clips for accurate, complete on-the-job training.

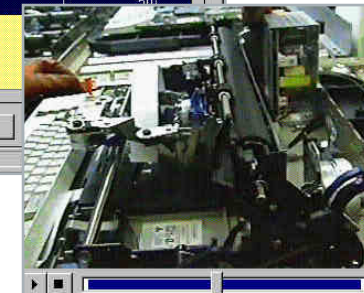
Work Center	Oper Seq#	Description	Run Labor	Run Machine	Setup Hours	Con Prc
200-203	10.00	Assemble Shelf Unit	4.60		50	
200-204	20.00	Check Glue Joints				
200-4344	25.00	Outside Treatment				
200-204	30.00	Finish Sand/Spray	1.50			

Multi-Purpose, Multi-Mode Manufacturing

Niche marketing is best served by initiatives that subdivide the manufacturing enterprise into focused factories, each concentrating on a narrow product mix for a particular market segment.

So, how do you combine all these disparate entities into a comprehensible corporate whole? And how do you accurately track a single raw material lot — like cashmere — as it moves through different production processes to be formed into yarn for one market and socks for another?

The OneWorld ERP_X solution integrates manufacturing strategies. All planning, scheduling, inventory, distribution, and financial information resides in one management system — no matter what combination of production modes you use.



Up and Running

Time-critical manufacturing means zero tolerance for equipment failure. Regular machine servicing has to be part and parcel of the production plan.

OneWorld ERP_X integrates preventive maintenance with manufacturing management systems to:

- Schedule shop floor capacity
- Monitor repair and maintenance costs by machine and work center
- Ensure availability of spare parts

You can simultaneously manage make-to-stock, repetitive, ATO, make-to-order, ETO, and process manufacturing, passing data with ease from one environment to another as needed.

You can use the item units of measure, scheduling, and costing that makes the most sense for each production strategy. Required data conversions and summaries are automatically handled by the system.

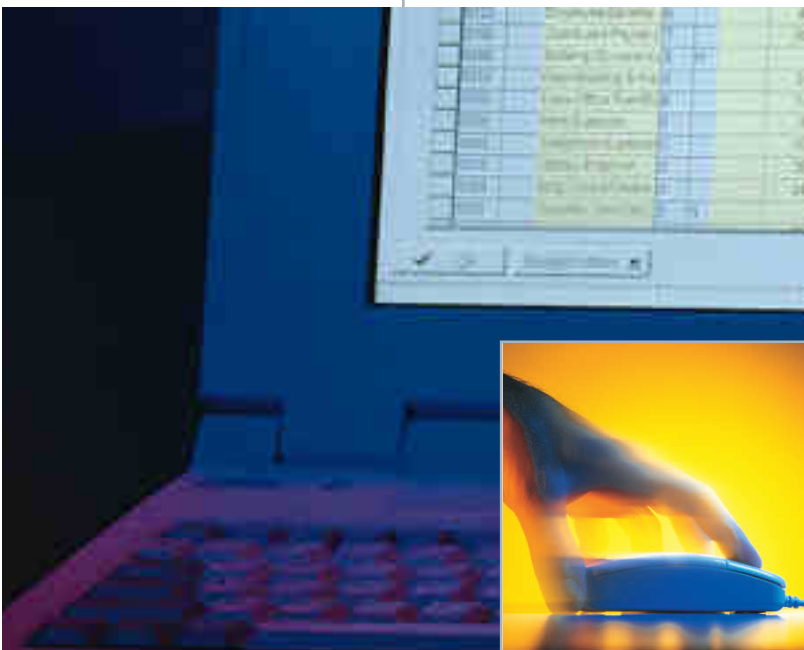
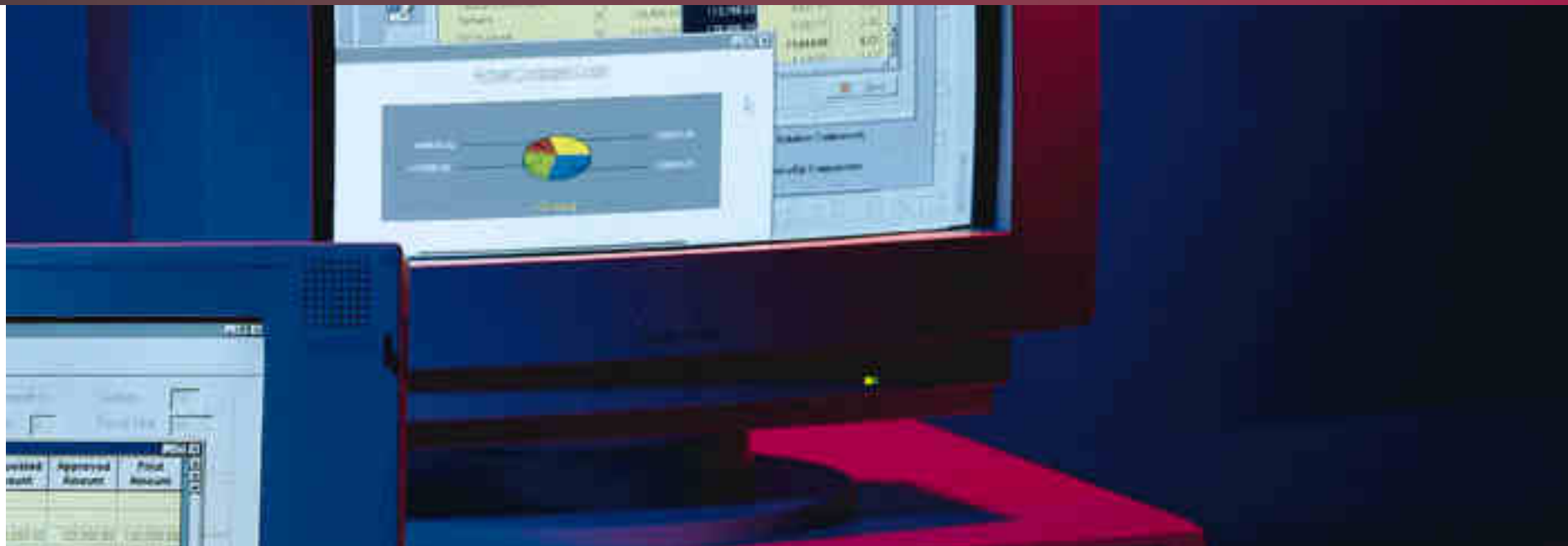
You close the loop between planning and execution with an interactive shop floor management system that updates your capacity and requirements plan with the latest production data.



Finance. No single function is more powerful in communicating — or curtailing — your corporate plan. Rigid reporting and cost accounting structures can make managing new supply channel relationships or product costing initiatives a real headache.

Direct Corporate Strategy Through Your Financial Organization

At the core of OneWorld ERP_X is an integrated global financial solution that is flexible enough to support your most dynamic business goals.



Tie financial reporting to execution of strategic plans.

Move Facilities Without Moving Mountains

Relocating your Des Moines distribution center to Quebec and opening a new sales office in London? No problem.

By simply adding and changing codes, you can classify your business units into groups to update the chart of accounts without changing your general ledger history. Complete financial data is resummarized to the new reporting structure, eliminating the need to renumber the general ledger itself.

Language of the Individual — Voice of the Enterprise

Unique localization capabilities support operating units worldwide, each with its own organizational framework, account structure, fiscal year calendar, currency, language, taxes, business practices, and regulatory requirements. With OneWorld ERP_X:

- Local currencies are automatically restated in any common currency you specify for corporate reports and online “flash” consolidations to support ad hoc decision making.
- Comprehensive multi-currency, multi-language capabilities allow you to quickly perform such routine international transactions as invoicing a customer in one currency, receiving cash in another, and booking payments in a third.
- Your employees can access information in their own languages, preferred terminologies, and date formats.

What Gets Measured Gets Attention

Negotiating profitable contracts with your trading partners requires comprehensive product life-cycle costing. You must be able to accurately track resource and material charges at the level of detail necessary for realistic pricing and cost containment.

OneWorld ERP_X provides unparalleled flexibility in how you slice and dice financial information.

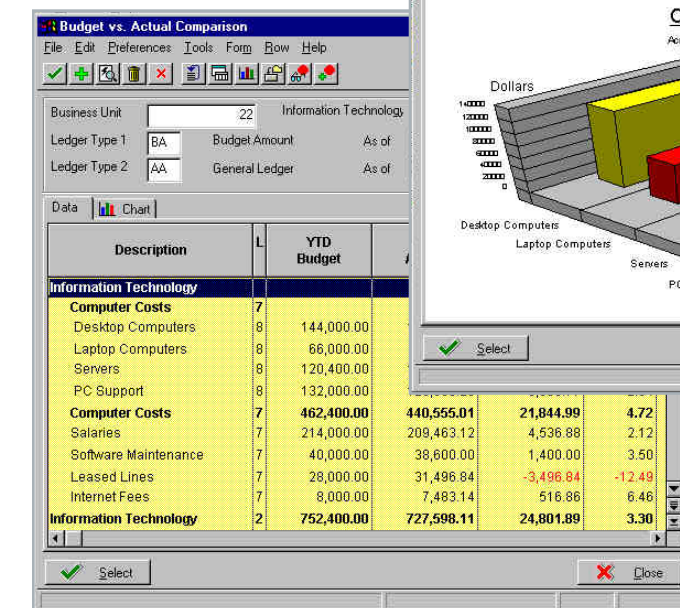
Multiple fiscal years and ledger types enable you to maintain as many budgets as you need for meaningful performance evaluation. You can track actuals against your requested, approved, final, and other user defined budgets — at any level of detail — from summary account groups all the way down to individual accounts.

You can establish virtually unlimited cost calculations and categories within standard, current, and future cost types to support activity-based costing.

Material/ingredients, labor, equipment, overhead, and outside services can be tracked at the order, job, customer, product, and/or plant level for a bird’s-eye view of what’s profitable and what’s not.

You have online access to actual-versus-budget comparisons with complete transaction drill down for rapid analysis of significant variances.

Instantly display a graphical view of the data for a clear financial picture.



Traditional client/server architectures are complex, hard to implement, and difficult to update. OneWorld employs new, network-centric technology that transcends client/server systems. Rather than confining computing potential to the limitations of any single machine, OneWorld leverages the power of the network. Compared to traditional hardware platforms, Configurable Network Computing promises:

- More power
- More scalability
- More accessibility
- More flexibility
- More fault tolerance

Beyond Client/Server

OneWorld is built on an architectural foundation that insulates the applications from the underlying database, operating systems, and hardware. OneWorld's foundation provides a layer of shock absorber between the platform technology and the business solution. Since the business logic is separated from the technical infrastructure, you can change your business without changing your technology, or update your technology without being forced to change your business practices.

Mask Complexity

OneWorld hides computing complexity behind the screen. With technology based on business specifications instead of syntax or symbols, you maximize business efficiencies at all levels of your organization.

Your front line employees can quickly customize and save screen views to mirror their workflows, and add new views on the fly. They have the right information at the right time and in the right format to make profitable decisions.

Your managers can focus on running the business rather than being consumed by technology. Instead of learning complex programming and reporting languages, they manage business rules and workflows with the click of a button. Imagine — your managers can finally get back to business.

Manage Change

You can forget about force fitting solutions. With OneWorld, applications are updated by attaching reusable business objects to workflow event points. You can easily match workflows to work needs — no matter how often they change.

You extend OneWorld applications using the same toolset J.D. Edwards engineers used to build OneWorld in the first place. This greatly simplifies the update process. Since the same change control system manages both new releases and local modifications, you can incorporate the new functionality delivered by J.D. Edwards while simultaneously preserving local variability.

Launch change from a stable foundation.



One Tool, One Learning Curve

Unlike most client/server environments, OneWorld provides a unified toolset to handle all application and technical issues. Instead of having to keep up with multiple programming languages, developers work within a single coherent environment. The OneWorld toolset handles all system needs from GUI design to application logic to dynamic partitioning, data replication, and report writing.

Leverage Technology

OneWorld applications are completely regenerable from the application foundation. That's a fancy way of saying that you can recreate applications simply and easily. If new technical capabilities have been added to the foundation, your applications automatically "inherit" the new technology when they are regenerated.

For example, if a new object brokering solution becomes popular in the year 2001, updating your applications to the new standard is not tricky at all. Once you install the new technology in the OneWorld foundation, all applications on the network use the new brokering scheme immediately. This is just one of the reasons OneWorld can stabilize and future-proof your business.

Five Easy Pieces — Performance and Scalability

OneWorld's objects are combined into five functional elements. You can think of these as five easy pieces that can be combined and recombined as required on virtually any combination of hardware and database platforms. The five pieces are:

- **Presentation** – What you see on the screen
- **Business Logic** – The object-based rules you use to run your business
- **Data** – Your business data that is managed by one or more databases
- **Data Warehouse** – Historic data you may choose to split off from your day-to-day interactive environment
- **Reporting** – OneWorld's report painter, which automatically generates the report logic behind the scenes allowing you to "paint" the report you want on the screen

You can run all five functional elements on one machine — perhaps a laptop personal computer — or split the functions across five or more tiers. Or you can host all the functions on a configurable network. You might place the presentation layer and some local data on a personal computer, add more data on a departmental server, run the data warehouse on an enterprise mainframe, and launch reports from a multi-processing UNIX server. If you sense a performance bottleneck, your system administrator can move the functions around at any time to balance the load and improve response time. That's the benefit of dynamic partitioning.

If you need to add users, you can re-partition your applications or add another server without disrupting the network. You can even add a remote network to boost processing power or add new capabilities. All of this is done transparently. To your employees, it appears that everything is happening on the desktop. They're getting the information they need to get the job done — without hassles.

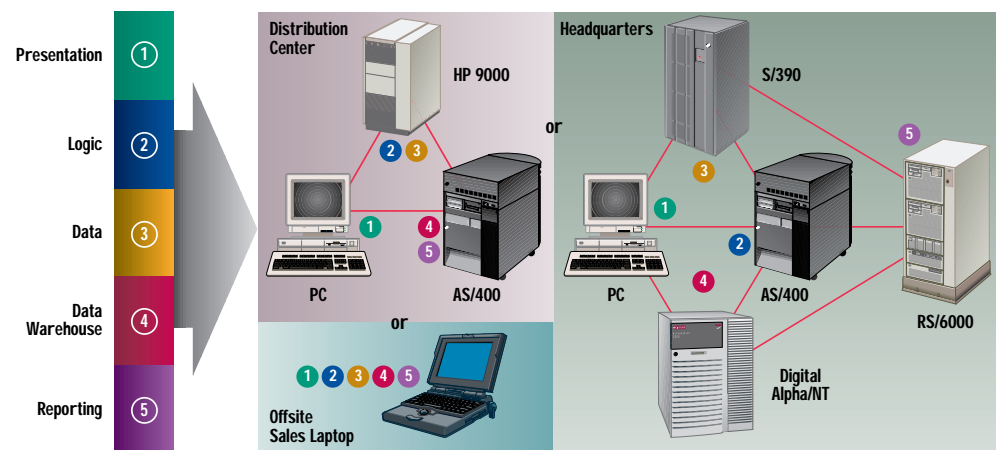
Coexistence — The Best of All Worlds

So you always have the right technology for the right task, J.D. Edwards has architected OneWorld to coexist with our WorldSoftware and WorldVision solutions. You control the pace of change with power to choose the combination of host-centric and Configurable Network Computing systems that best supports your needs.

Without abandoning your existing J.D. Edwards software solutions, you can prototype new technologies in selected parts of your organization — module by module. By coexisting, instead of making an all-or-nothing cutover, you capitalize on investments in training and development, and minimize disruption to ongoing business.

You may even find that it makes sense to retain different technology solutions in different parts of your enterprise. With J.D. Edwards, you can mix and match configurations of present and future technologies, while maintaining system-wide integration.

The Five Easy Pieces of Configurable Network Computing



OneWorld's platform neutral design enables highly dynamic application partitioning.