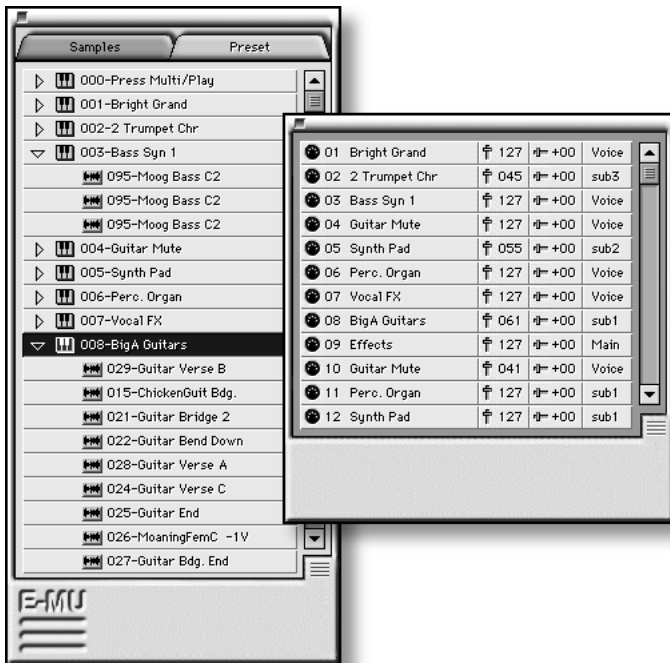


# EmuFileAssistant™

*Desktop integration for EMU EOS Samplers  
Supports EIV, E4X, E4K e64, e6400, & ESynth & later models*



## DETAILED PRODUCT SUMMARY

Finally your Emu Sampler can be integrated with your audio workstation as easily as an internal Sample Card.

EmuFileAssistant™ allows you to visually control aspects of your sampler, whilst providing Mac-based file management and sample-file format compatibility with a variety of Mac applications.

With SCSI and OMS connections, EFA™ displays the Samples, Presets and Multimode contents of your samplers. Drag'n'drop samples or presets to and from the sampler and your Mac hard discs. Save complete multimode Midi, volume, pan and output assignments into Mac files. Save only what you have changed.

Edit Multimode parameters from the beautiful Mac user interface, drop Presets onto Midi channels to load and assign simultaneously. Alter volume, Pan and output assignments without touching the sampler.

Use products like SampleSearch™ to browse your library, audition samples and load them into your Emu via drag'n'drop. Delete multiple samples and presets by dragging them to the Mac Trash. Defragment sampler memory when YOU decide.

EFA is the perfect link between Emu Samplers and your Mac audio workstation.

## PRODUCT DESCRIPTION

EmuFileAssistant™ offers EOS sampler owners a desktop connection to their sampler's memory. With drag and drop sample transfer, the ability to store Emu files on your Mac's hard disc, and sample-file format compatibility with Pro Tools & many other audio applications, EFA makes your sampler feel an integrated part of your digital audio workstation.

## FEATURES INCLUDE

- View samplers memory contents on Mac
- View Emu multi-mode settings
- Drag'n'drop transfer of Samples Presets and Multimode Banks
- Store Emu files in the same Mac folder as your sequence / session
- Use Mac-based file management tools like SampleSearch
- Quickly and easily transfer samples to Mac for editing and back again
- Fast SCSI connection for Sample transfer
- Edit Multimode preset assignments on Mac screen.
- Overcome Emu file management nightmares:-  
Re-save preset file changes without saving samples each time.
- Supports multiple EOS Samplers

## SYSTEM REQUIREMENTS

- Emu EOS Sampler
- EOS 3.0 or later
- SCSI connection to Sampler
- OMS 2.3.2 or later
- Apple System 7.6.1 or later
- Apple Quadra, PowerMac or G3