

# 3 Port Solenoid Valve Rubber Seal *Series SY100*

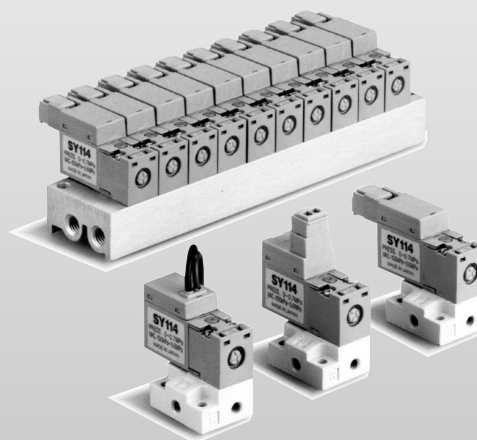
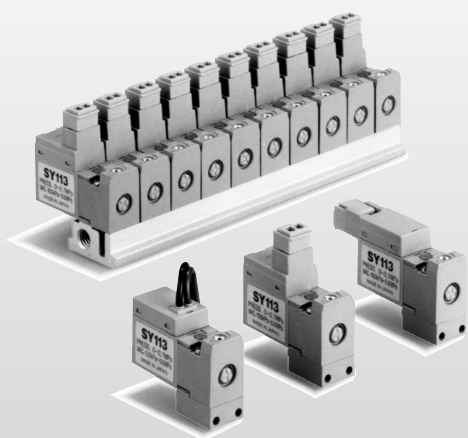
**Low power consumption: 0.5W (Standard, Without light)  
(Current draw: 21mA at 24V DC)**

\*Large flow capacity style: 0.75W (Current draw: 31mA at 24V DC)

**Body width: 10mm**  
Cv0.008 (Standard style)  
Cv0.012 (Large flow capacity style)

**Exceedingly long life**

100 million cycles (By SMC life test data)



**Vacuum Applications Possible**

Can be used up to -100kPa

**Copper free**

No copper used for sections in contact with fluids.

**Bright color tone and "state of the art" design**

A bright gray concept has been adopted for this product to complement the surrounding operational environment.

SY

SYJ

VK

VZ

VT

VT

VP

VG

VP

VQ

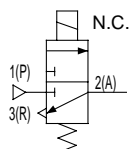
VQZ

VZ

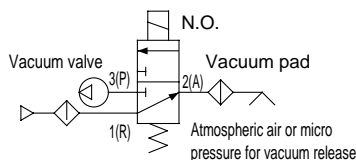
VS

**SY100/ Application example** (Pneumatic symbols shown are typical examples.)

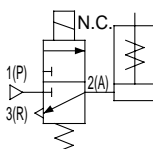
① Valve for blow off



② Valve for vacuum



③ Operation for single acting cylinder



④ Operation for air operated style fluid control valve

