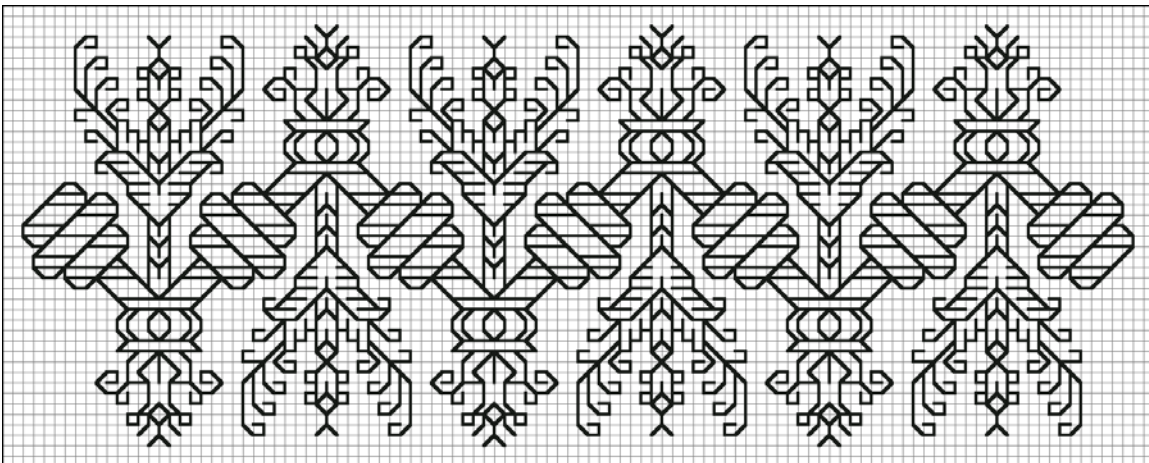
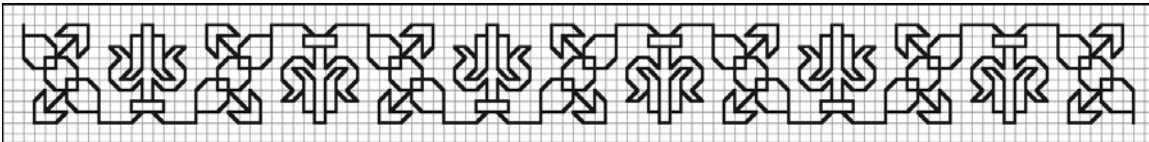
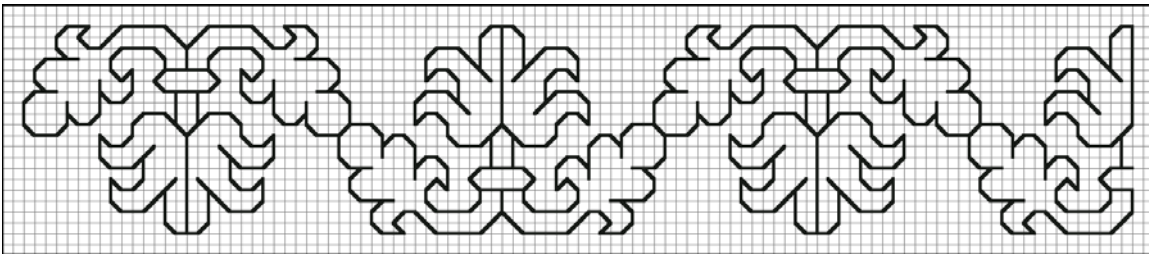
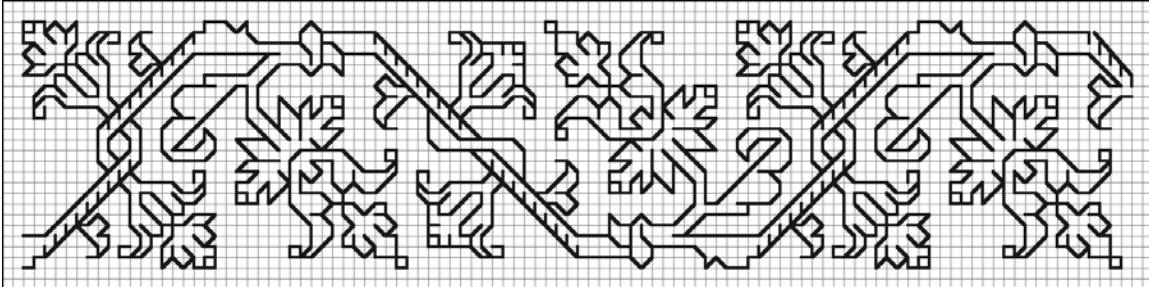
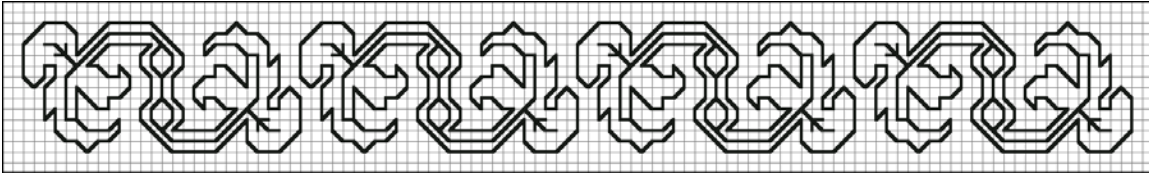
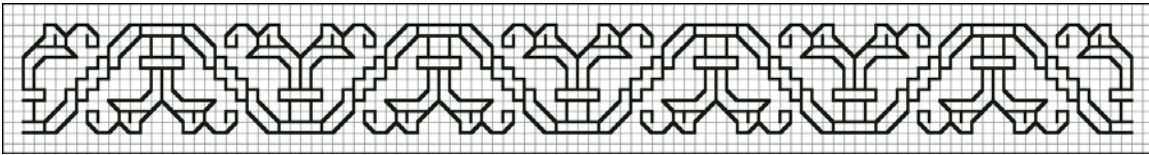


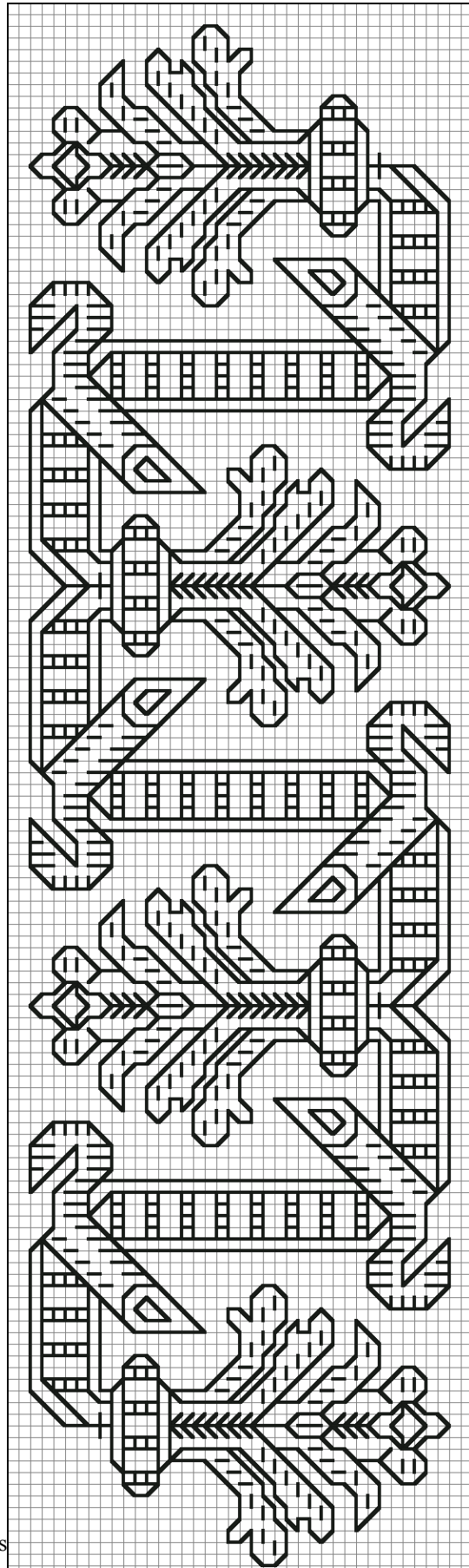
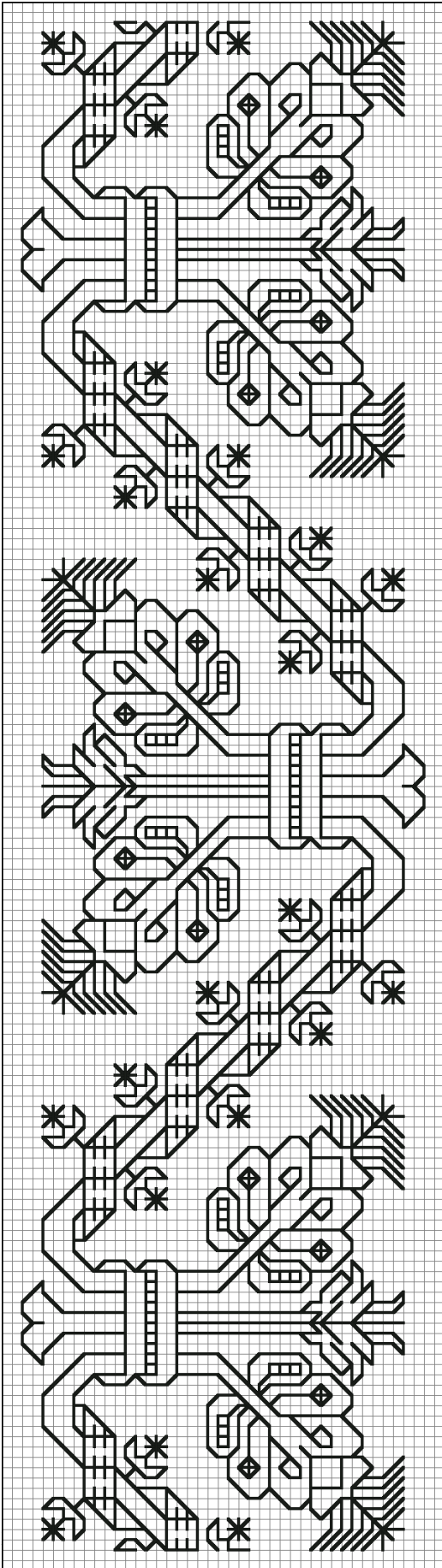
All patterns on this page are graphed from an Italian sampler from the 16th century that is located in the Victoria and Albert Museum in London, England. (T.14-1931) The sampler is done primarily in black silk on linen but also has some dark red silk with small amounts of dark blue, gold-yellow, and dark green silk.

© 2002 by Claudette Ziemann (the_bronwen@hotmail.com)



All patterns on this page are graphed from an Italian sampler from the 16th century that is located in the Victoria and Albert Museum in London, England. (T.14-1931) The sampler is done primarily in black silk on linen but also has some dark red silk with small amounts of dark blue, gold-yellow, and dark green silk.

© 2002 by Claudette Ziemann (the_bronwen@hotmail.com)

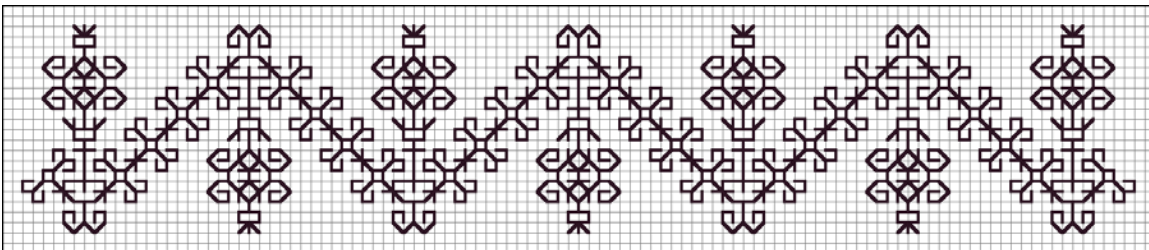
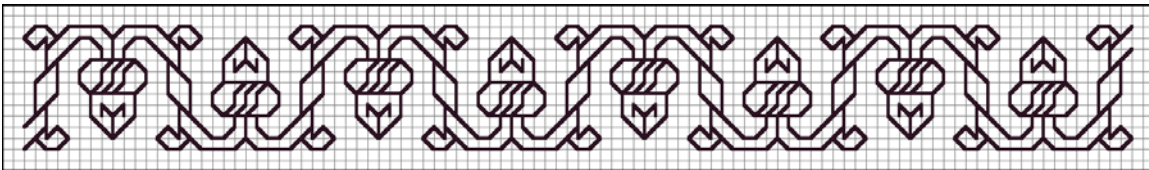
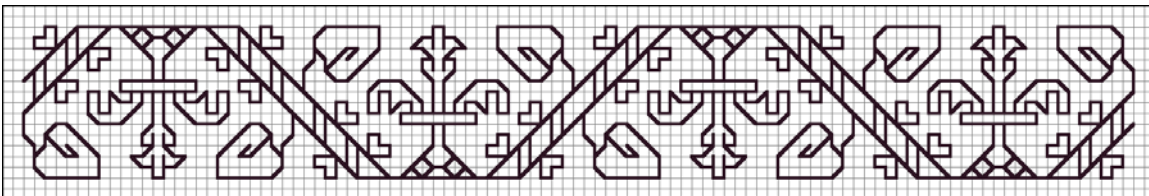
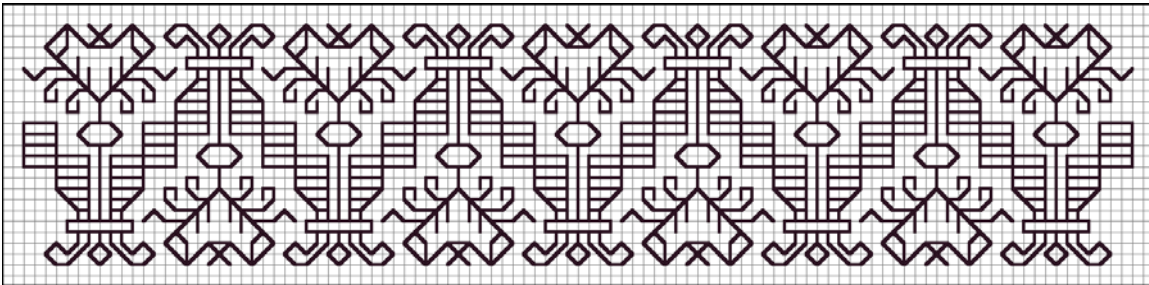
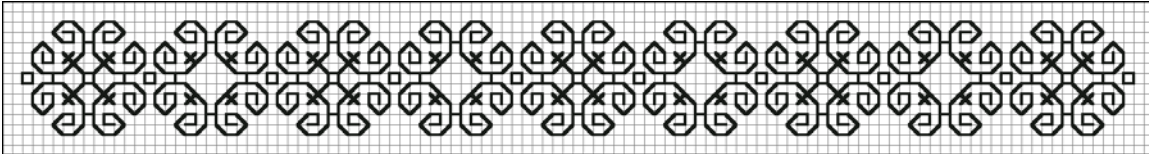
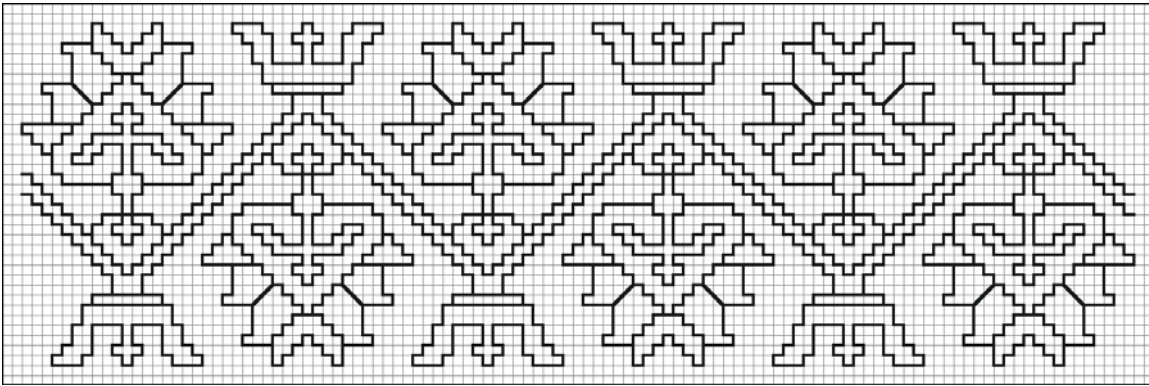


lian s
d. (T.

silk

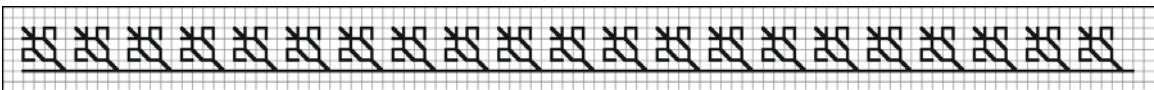
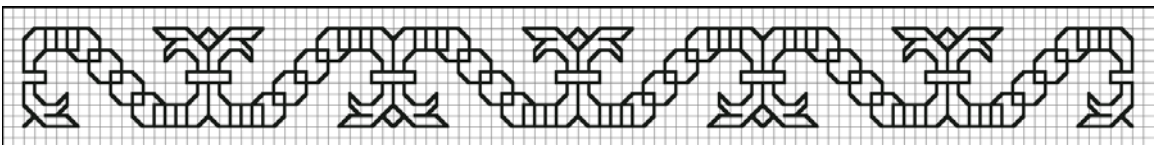
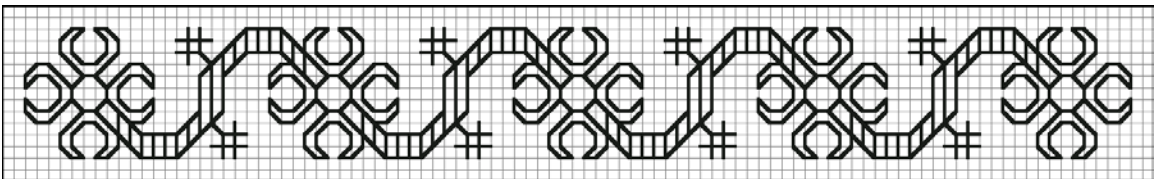
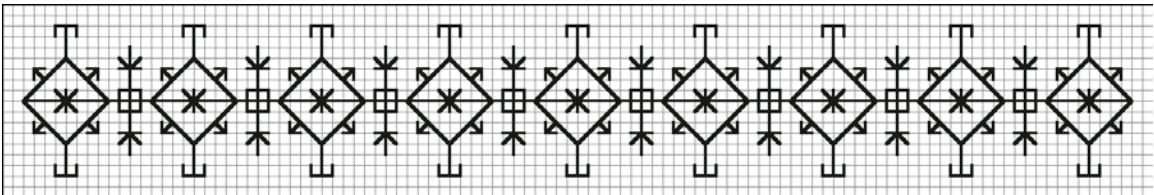
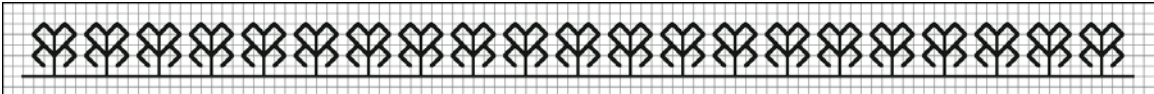
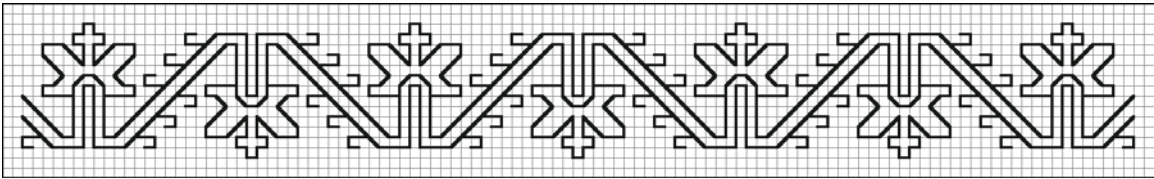
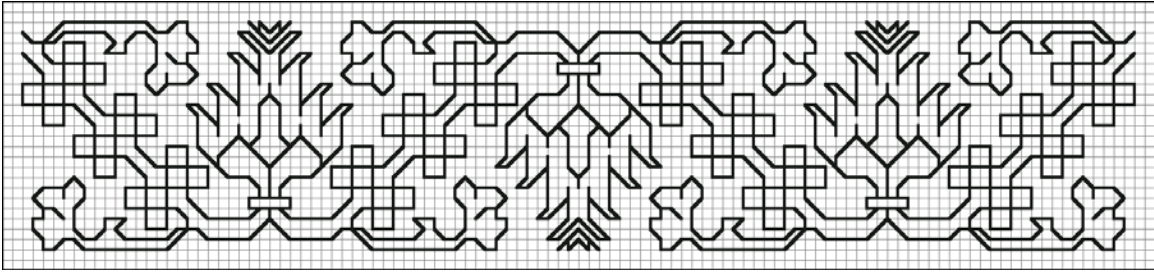
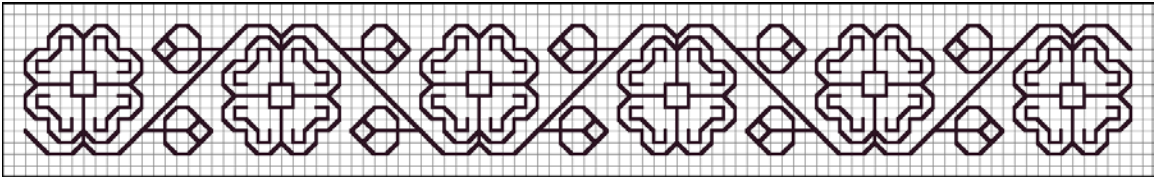
on linen but also has some dark red silk with small amounts of dark blue, gold-yellow, and dark green silk.

© 2002 by Claudette Ziemann (the_bronwen@hotmail.com)



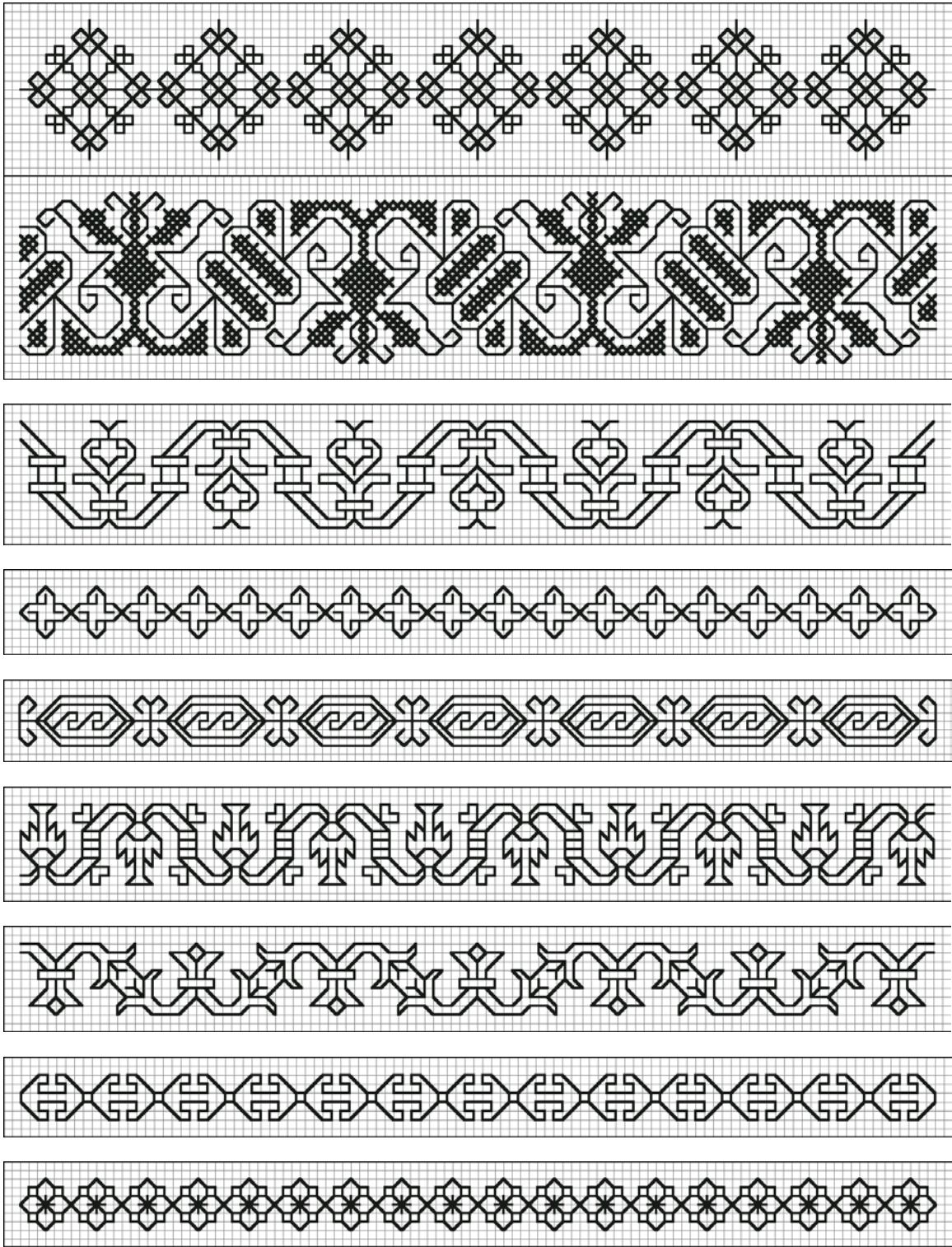
All patterns on this page are graphed from an Italian sampler from the 16th century that is located in the Victoria and Albert Museum in London, England. (T.14-1931) The sampler is done primarily in black silk on linen but also has some dark red silk with small amounts of dark blue, gold-yellow, and dark green silk.

© 2002 by Claudette Ziemann (the_bronwen@hotmail.com)



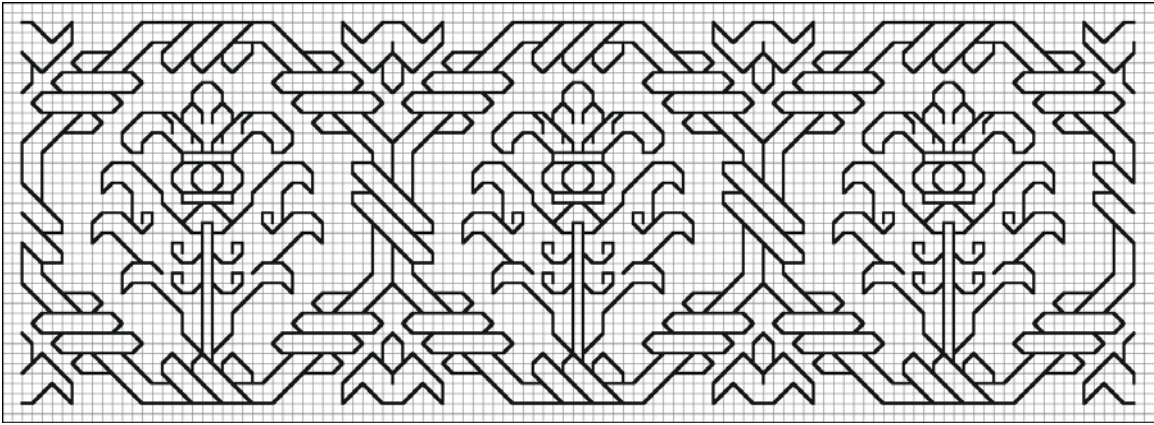
All patterns on this page are graphed from an Italian sampler from the 16th century that is located in the Victoria and Albert Museum in London, England. (T.14-1931) The sampler is done primarily in black silk on linen but also has some dark red silk with small amounts of dark blue, gold-yellow, and dark green silk.

© 2002 by Claudette Ziemann (the_bronwen@hotmail.com)



All patterns on this page are graphed from an Italian sampler from the 16th century that is located in the Victoria and Albert Museum in London, England. (T.14-1931) The sampler is done primarily in black silk on linen but also has some dark red silk with small amounts of dark blue, gold-yellow, and dark green silk.

© 2002 by Claudette Ziemann (the_bronwen@hotmail.com)



All patterns on this page are graphed from an Italian sampler from the 16th century that is located in the Victoria and Albert Museum in London, England. (T.14-1931) The sampler is done primarily in black silk on linen but also has some dark red silk with small amounts of dark blue, gold-yellow, and dark green silk.

© 2002 by Claudette Ziemann (the_bronwen@hotmail.com)