



## ***The industry's most advanced Digital Bin.***

- n **High Speed, up to 160:1**
- n **Over two-hours of RAM memory**
- n **Fast background program loading**
- n **Any two speeds from 32:1 to 160:1**
- n **Over 75-hours of album library**
- n **All speeds = 44.1kHz/16-bit stereo**
- n **Server download capability**
- n **Simple, 3-button operator controls**
- n **Record level controls, +/-6 dB**
- n **Program log: time, date & quantity**
- n **Interface: Lyrec, Gauss, etc.**
- n **Built-in UPS / line conditioner**
- n **Designed and made in the USA**

### ***The advanced features of the DB-2000 cover all the requirements of the most demanding applications.***

- n Slave control commands are provided in different voltages to accommodate various requirements.
- n Repeated start commands are provided for staggered loading of slaves.
- n Adjustable cue-tone generation enables control of the amplitude, frequency and burst length.
- n A loop counter gives a tally of the number of times the master has been read out to the slaves.
- n Slave copy counter gives a current reading of production quantities, preventing wasteful over-runs or under-runs.
- n Automated memory testing ensures everything is working properly before production starts.
- n Multi-tone signal generator aids in DB-2000 alignment as well as system calibration.
- n Comprehensive program log keeps an accurate record of the time, date program and quantity of each run.
- n Flat bus audio lines adjustable from -5dB to +6dB enable easy integration with a variety of slaves.
- n Data integrity is assured by constant monitoring during downloading of programs to reading RAM outputs to the digital to analog converters.
- n The DB-2000 uses only "yellow-book" data type CD ROM masters, ensuring 100% error free, accurate data transfer. (Audio CDs only mask read errors).
- n The backbone of the DB-2000 is a fast, state-of-the-art computer using the industry proven Windows NT operating system for the most stable performance possible.

**Telemetrics**

Digital Bin Products

**Versadyne International, Inc.**

504-D Vandell Way, Campbell, CA 95008 USA

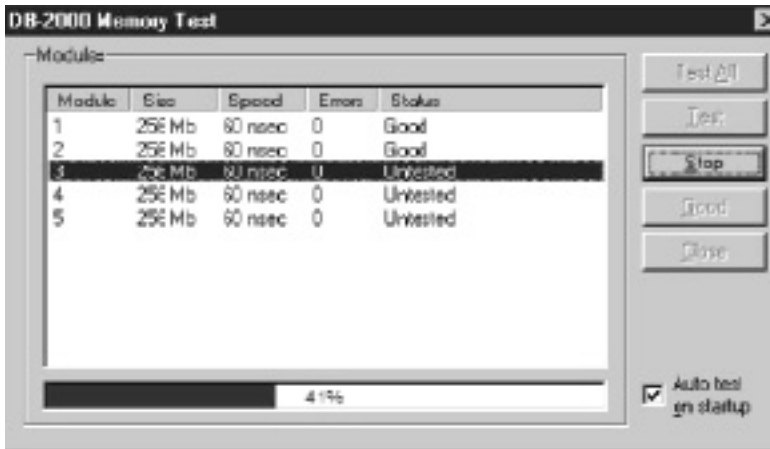
Tel: 408.379.0900 Fax: 408.379.0902

e-mail: tapes@versadyne.com

### Multiple screens tell the story.

Simple, easy to read screens enable the operators and service personnel to see exactly what the system is doing at any time. Automatic memory testing and VU meter calibration remove any questions as to the accuracy or dependability of the DB-2000.

A program log keeps a precise accounting of all jobs run on the system. A record of the date, time, program and quantity of every run is stored for later reference. A very useful tool to keep track of time-management and production history.



### Memory Test Display

The memory test is automatically performed at startup. When required, the test can be manually initiated. The condition of each tested memory module is displayed.

### The DB-2000's fully appointed user interface screen.

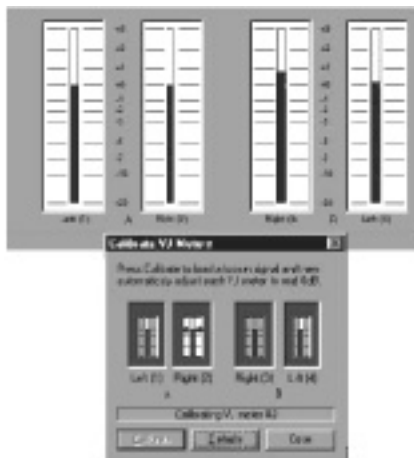
Details of the duplication process, album library contents and user controls are logically displayed.

### Versatility and compatibility.

The DB-2000 has been designed to provide the most accurate, cost effective Digital Bin available for retrofitting to virtually every professional tape duplication system made. The slave output panel has provisions to directly interface with Lyrec, Otari, Electro Sound, Gauss, etc.

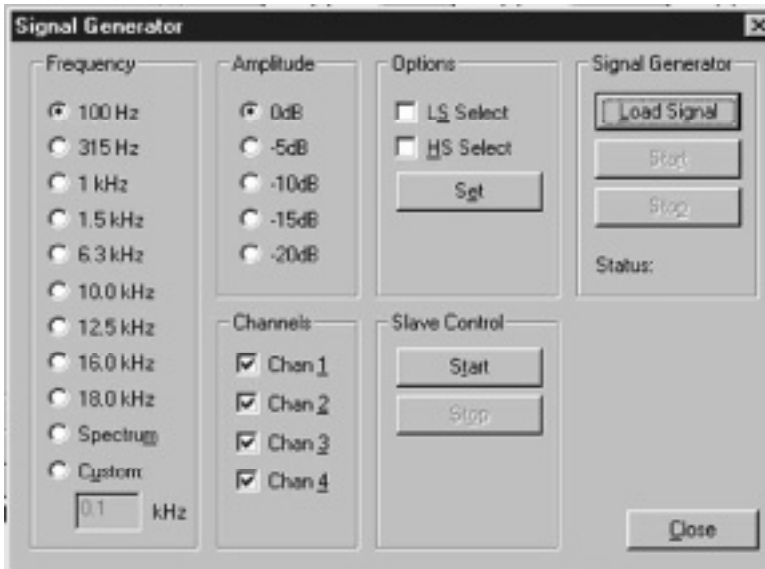
Slave controls have been configured to match any combination of voltage requirements ranging from 5 to 24-volt logic command signals.

Audio output lines are flat-bus, capable of driving into a terminator of 50-ohms to 93-ohms. The signal levels can preset from -5dB to +6dB.



### Automated VU Calibration

VU meters are automatically set to the "0" reference reading, simplifying the alignment of the DB-2000.



### Signal Generator

Test tones of various significant frequencies and five selectable levels are provided for the calibration of the DB-2000 as well as slave recording levels and bias adjustments.

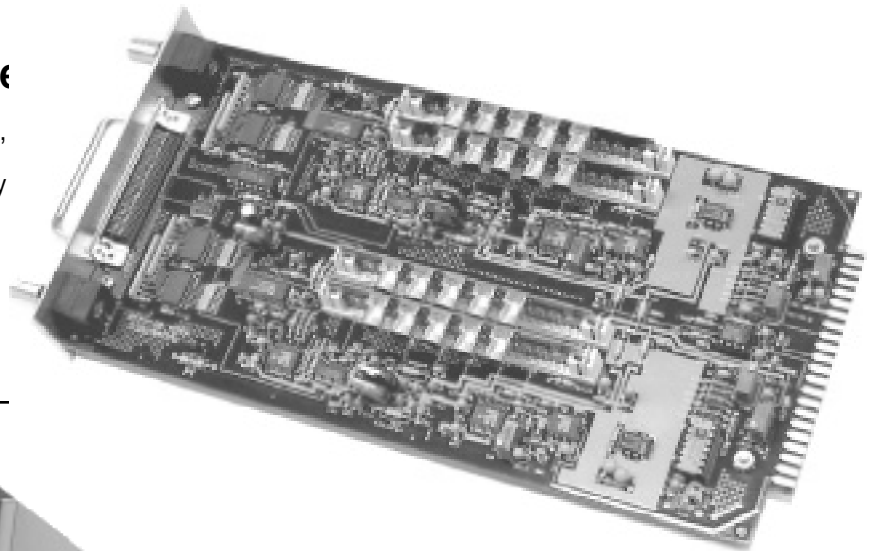
Any one or multiple number of the four audio channels can be selected to send the test tones. Slave speed is also a selectable option.

A provision is made to permit entering the value of any required tone not offered on the screen.

### Digital to Analog Converter

With the aid of computer design technology, the digital to analog converter boards have been engineered to ensure the finest quality audio obtainable.

Fast, clean D/A conversion, synchronized sample and hold circuits and specially designed anti-aliasing filters are the key to the unparalleled sonic quality produced by the DB-2000 at any speed up to 160:1.



### Convenient, Simple, Easy

Operator controls, large screen and CD ROM readers are placed for maximum ease of use. Record level controls are located directly above the CD readers, behind the door, to prevent accidental level setting changes.

**Telemetrics**

Digital Bin Products

**Versadyne International, Inc.**

504-D Vandell Way, Campbell, CA 95008 USA

Tel: 408.379.0900 Fax: 408.379.0902

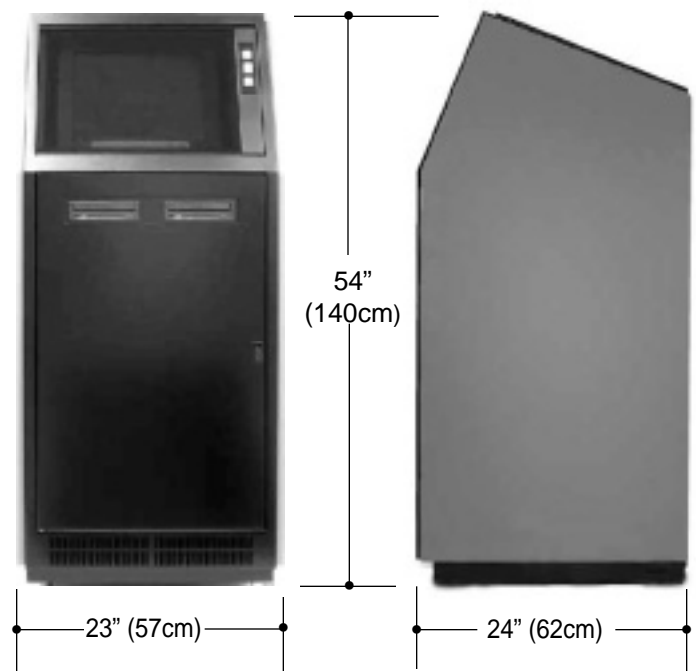
e-mail: tapes@versadyne.com

## Specifications

- Total RAM program storage:** More than 2-hours  
**Total album library storage:** More than 75-hours  
**Sample rate:** 44.1kHz (standard, others available)  
**Format:** Stereo  
**Encoding:** 16-bit linear  
**Duplication ratios:** 32:1 through 160:1  
**Frequency response:** 20Hz - 18kHz, +/- 0.5dB, 20kHz down < -2dB  
**Download medium:** CD-ROM, yellow-book; network optional  
**Download transfer rate:** Approximately 20X  
**Memory transfer rate:** Approximately 16X  
**Error detection:** Parity & data transfer  
**Memory test:** Automatic at startup  
**Operating system:** Windows NT  
**Speeds:** One standard, two optional  
**Output level:** Presettable at -5dB to +6dB  
**Output impedance:** 50 through 93 ohms, terminated  
**Record level control:** Four channels, +/-6dB on front panel  
**Dynamic headroom:** 14dB above "0dB" reference level  
**Reference level:** -14dB from digital clip (digital "0-VU")  
**Dynamic range:** > 80dB  
**Signal-to-noise ratio:** > 75dB  
**Distortion:** < 0.03% at 1kHz sine wave  
**Stereo phase error:** < 20 degrees at 20kHz  
**Cross-talk rejection:** > 75dB  
**Slave commands:** Start, stop, cue-pulse & speed  
**Display:** 15" color monitor  
**Operator controls:** Three button switch panel, mouse  
**Power requirements:** 120/240 volts, 50-60Hz, 800 watts  
**Power line conditioner:** UPS/line conditioner included

## Weights & Dimensions

- Weight:** 250 lbs. (115Kg)  
**Dimensions:** 54" H x 23" W x 24" D  
140cm H x 57cm W x 62cm D  
**Shipping weight:** 580 lbs. (263Kg)  
**Shipping dimensions:** 34" H x 65" L x 33" W  
86cm H x 166cm L x 84cm W



### The Telemetrics MS-640 Mastering Station

The optional MS-640 produces the finest quality CD masters for downloading into any of the Telemetrics Digital Bins. Both analog and digital input sources can be used.

The software is very easy to use and takes little practice to become proficient at editing programs and recording CDs.

**Telemetrics**

Digital Bin Products

**Versadyne International, Inc.**  
504-D Vandell Way, Campbell, CA 95008 USA  
Tel: 408.379.0900 Fax: 408.379.0902  
e-mail: tapes@versadyne.com