

INSTALLATION
SECTION 2

- Notes:
- MK12D Cessna replacement must be connected to a 14V bus for power.
 - All wires are standard copper. Unmarked wires are No. 22 AWG; shielded wires are No. 22 AWG with insulating jacket.
 - For 14-volt operation, connect wires marked @@@; 28V wires marked XXX. For 28-Volt operation, install Voltage Converter P-5284; connect wires marked XXX; 28V wires marked @@@.
 - The five contacts of Connector 38423-0026 that accept No. 14, 16, or 18 wire are installed in positions AA, BB, M, X, and Z.
 - For proper grounding, aircraft surfaces on which units are mounted must be clean, bare metal.
 - If speaker-phone switching is used, connect A and N to switch, as shown. If speaker-phone switching is not used, delete wiring and connect a jumper between A and N.
 - Keep-Alive Memory Option
In this option the Keep-Alive line PS-W is wired "HOT" to the aircraft battery through a 1/16 amp fuse. This provides a non-volatile memory for the COM Active and NAV Active frequencies. At initial turn on of the MK12D, the last programmed Active COM and NAV frequencies will be displayed. The COM Standby frequency is preprogrammed to display 121.90 MHz and the NAV Standby 110.50 MHz.
If the Keep-Alive memory option is not used then the keep alive line PS-W should be left open or connected to the dimmer control. Under this condition, at initial turn on of the MK12D, both the COM and NAV frequencies will be displayed a random valid frequency. The COM Standby will read 121.90 MHz and the NAV Standby 110.50 MHz.
 - Part numbers given in figures 2-29 are CESSNA part numbers.
 - Installation of the MK12D Cessna replacement must be wired as shown in Fig. 2-29 and done by qualified FAA approved personnel.
 - If the Keep-Alive function of the MK12D is desired, the following tray modification is required:
 - Disconnect PS Pin M from the Dimmer Bus.
 - Reconnect PS Pin M to the A/C Battery through a 1/16A Fuse.
 - SW3003 is used to change MK12D to the equivalent of a MS-1/T MODEL 308/328.

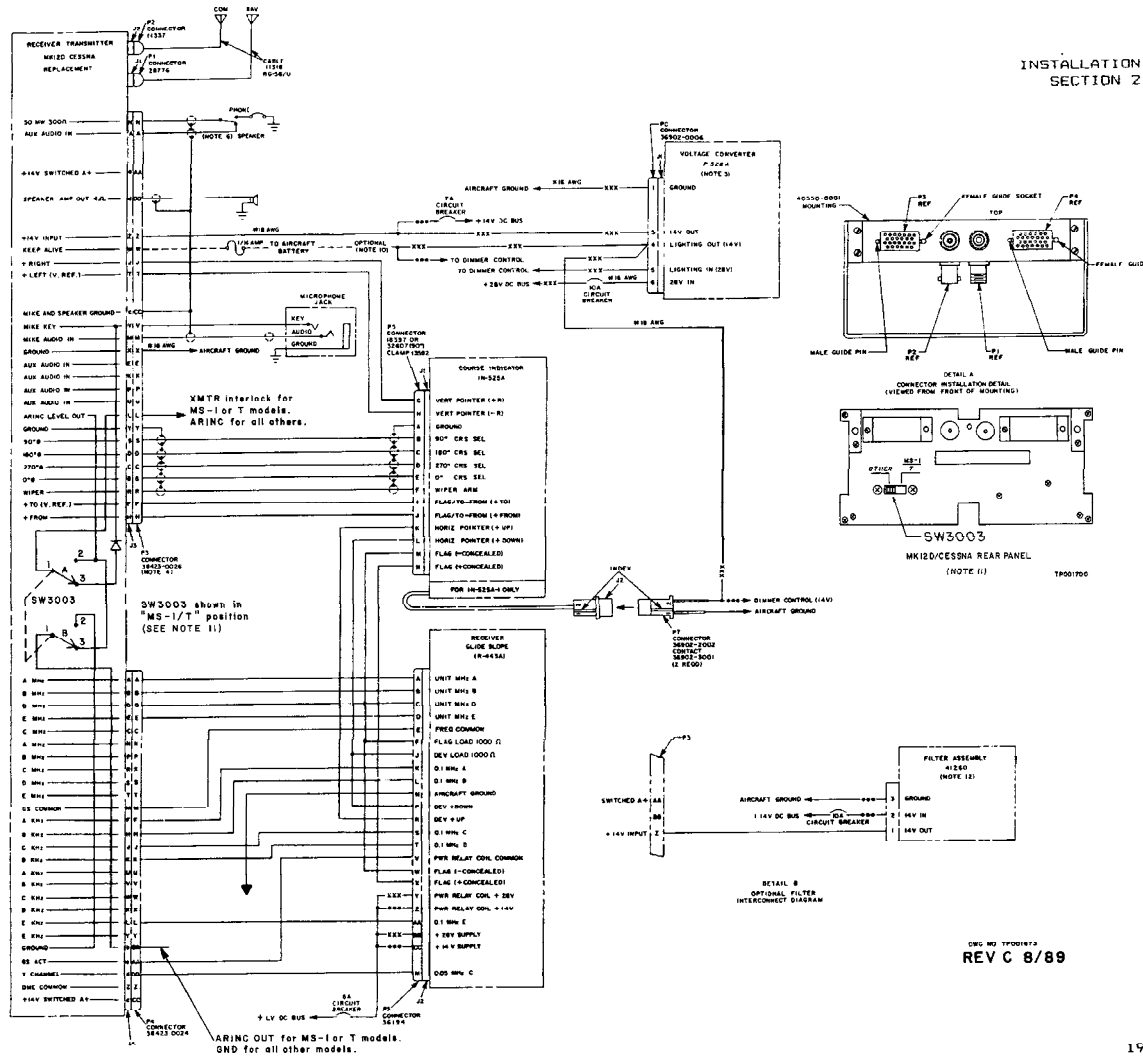


FIGURE 2-29 MK12D CESSNA REPLACEMENT TO CESSNA INTERCONNECTION DIAGRAM

REV C 8/89