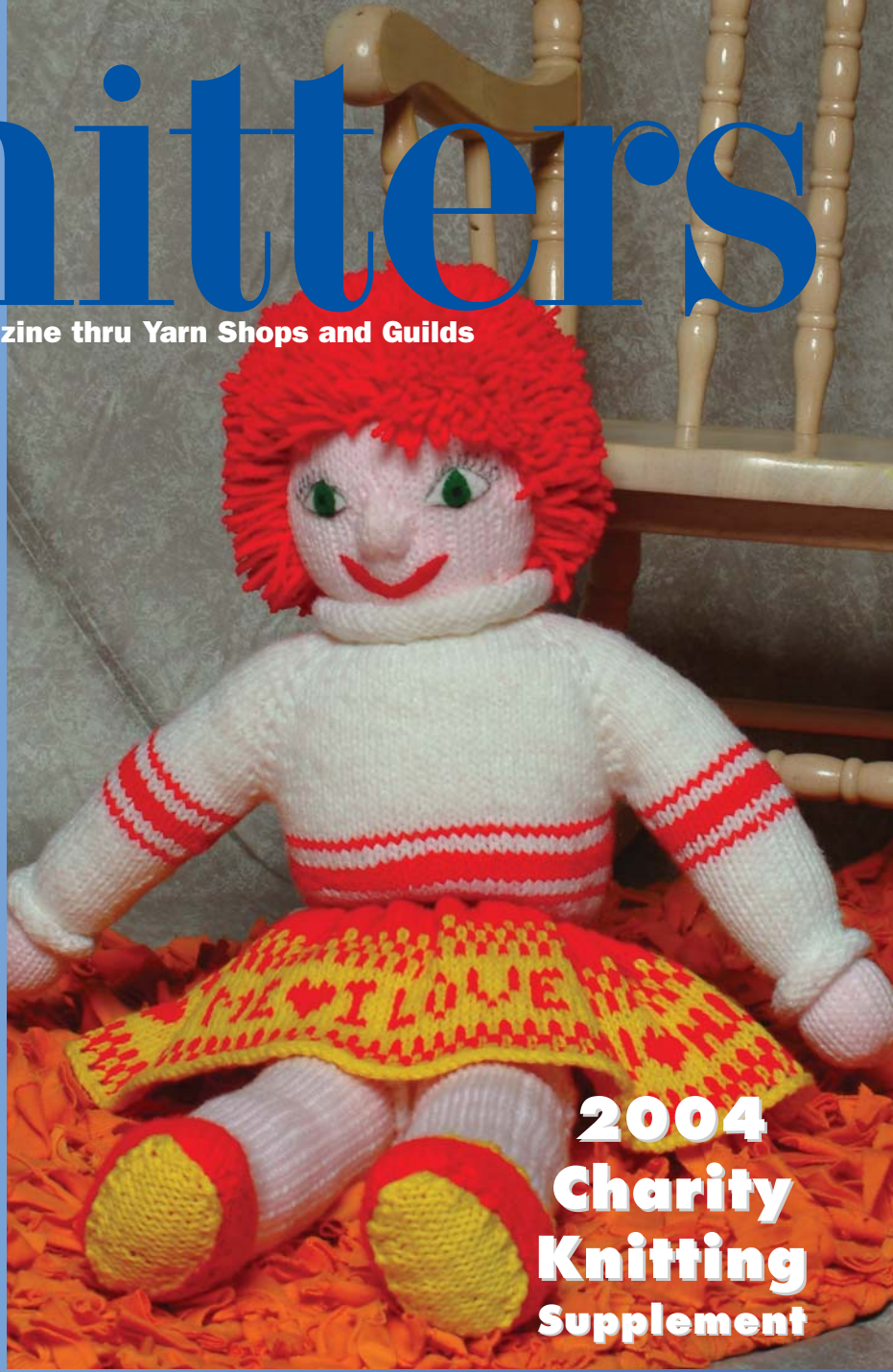


INKnitters

Distributed Free by INKnitters magazine thru Yarn Shops and Guilds



**2004
Charity
Knitting
Supplement**



Gifts of Love from Your Needles

Welcome to the third INKnitters Charity Knitting Booklet. Inside, you will find over a dozen simple projects to make for organizations in your community, or just a special friend that needs a knitting hug. We hope that you enjoy this yearly supplement, produced because we believe in giving back to the knitting community and our local cities, and support us in the future by subscribing to INKnitters. The 2002 and 2003 booklets are downloadable for FREE (as PDF files) at

www.inknitters.com.

Hooded Baby Cape

This cape is seamless if started with invisible cast on of the hood. I used circular needles for both the flat knitting of the hood through the yoke as well as the round knitting of the body. - Designed by Monika Gordon

MATERIALS:

- 4 oz / 113 g worsted weight yarn and 1/2 oz / 14 g of contrasting color yarn
- Size 10 US (6 mm) circular needle 16" / 40.6 cm

- Two size 10 US (6 mm) double pointed needles, 7" / 17.8 cm long
- Two buttons
- Crochet hook size I US (5.5 mm)
- Tapestry needle for weaving in ends

HOOD

Begin at the upper end with an invisible cast on of 48 stitches.

Row 1: K.

Row 2: K3 (border), p to within last 3 sts, k3.

Repeat these two rows 15 times for a total of 32 rows. End with wrong side. Piece should be 12" / 30.5 cm wide.

NECK

Row 1: Decrease row: K3, *k1, k2tog. Repeat from * across row to last 3 sts, k3.

Row 2: K3, *k1, p1. Repeat from * across row to last 3 sts, k3.

Repeat Row 2 four times to make a total of five rows. End with wrong side.

YOKE

Most rows begin with k3 but some have a different number. All rows have the 3-stitch garter border. Rows 5 and 6 form a decorative ridge.

They enhance the sweater when worked in a contrasting color. Rows 5 and 6 are repeated five more times for a total of six times.

Row 1 (RS): K.

Row 2 (WS): K3, p to within last 3 st, k3.

Row 3: K4, *inc 1 (knit in the front and back of the next st), k1. Repeat from * across the row to last 4 sts, k4.

Row 4: K3, p to within last 3 sts, k3.

Decorative Rows:

Row 5 (RS): K3, *k2tog. Repeat from * across row to the last 4 sts, k4.

Row 6 (WS): K4, inc 1 (pick up horizontal strand between the last stitch on right-hand needle and the next stitch on left-hand needle. This makes a hole like a yarn over and gives a pleasing effect), k1, repeat from * across row to last 4 sts, k4.

Row 7: K3, *inc 1 in next st, k2. Repeat from * across to last 4 sts, k4.

Row 8-10: Repeat Rows 4-6.

Sizes:

6 - 12 Months

SKILL: Adv Beginner

GAUGE: 4 st = 1" / 2.5 cm

NOTES: This cape is seamless if started with invisible cast on of the hood. I used circular needles for both the flat knitting of the hood through the yoke as well as the round knitting of the body.

Row 11: K4, *inc 1 in next st, k3. Repeat from * across row to last 4 sts, k4.

Row 12-14: Repeat Rows 4-6.

Row 15: K4, *inc 1 in next st, k4. Repeat from * across row to last 5 sts, k5.

Row 16-18: Repeat row 4-6.

Row 19: K7, *inc 1 in next st, k4. Repeat from * across to last 6 sts, k6.

Row 20-22: Repeat rows 4-6.

Row 23: K4, *inc 1 in next st, k4. Repeat from * across row to last 5 sts, k5.

Row 24-26: Repeat rows 4-6.

BODY

Row 1: K.

Rnds 2-31: Join the two ends and knit in the round for about 30 rnds depending how long you want the cape.

Next 5 rows: *K1, p1. Repeat from * around.

FINISHING

Unravel the crochet chain of the invisible cast on, divide the stitches in half, put them on two double pointed needles and weave the two sides together to make the hood. Make two 15" / 38.1 cm crochet-chains or I-cord ties or use a pretty ribbon, and fasten to each front at the neck band.

Sew two buttons on each side of center front opening between the second and fourth decorative row. Crochet two 15-stitch chains. Sew each crochet chain to the back of each button on the left side, wrap it around that button and also wrap it around the right side button in a loop. Weave in loose yarn ends. Block according to directions on yarn label.



Yarn Available from: Lion Brand Yarns • 34 West 15th St. • New York, NY 10011-6815 • 800-258-YARN • www.lionbrand.com

This little sweater can be made out of your leftover worsted weight yarns or purchased yarns. Any colors can be substituted for those pictured--use your imagination to make a great colorway for a unique look! - Designed by Joanne Pohlman, INKnitters Staff

MATERIALS:

- Lion Brand Wool-Ease (80% Acrylic, 20% Wool) 197 yd / 3 oz (180 m / 85 g) skeins: 1 skein Blue (MC), 1 skein Pink, 1 skein Grey, 1 skein White, or leftover worsted weight yarns.
- Size 9 US (5.5 mm) and size 10 US (6 cm) ndls
- Stitch holders • Tapestry needle

Child's Sizes 2 (5)

Finished chest

25 (28¹/₂)" / 63.5 (72.4) cm

SKILL: Intermediate

GAUGE: 14 stitches and 20 rows
= 4" / 10 cm

NOTE: Remember to pick up new color from underneath previous color to prevent a hole in your knitting.

BACK

With MC, CO 44(50) sts, with size 9 US (5.5 mm) needles. Work in garter st for 1³/₄" / 4.4 cm. Change to size 10 US (6 mm) needles and pink yarn. Work in st st until piece measures 7³/₄" (8³/₄)" / 19.7 (22.2) cm. Place a marker (pm) on each side edge for the arm-hole. Cont in st st until entire piece measures 13¹/₄" (15)" / 33.7 (38.1) cm. BO 15 shoulder sts, place next 14 (20) sts onto a st holder, BO last 15 sts.

FRONT

With MC, CO 44 (50) with size 9 US (5.5 mm) needles. Work in garter stitch (k every row) for 1³/₄" (4.4 cm) ending with a WS row. Change to size 10 US (6 mm) needles and work Chart A on 24 (28) sts, pm. Work border over next 4 sts, pm. Work Chart B over next 16 (18) sts. Cont working the Charts and the border until entire piece measures 6.5 (8)" / 16.5 (20.3) cm.

Dropping all colors, except MC, work in garter st for 1" (2.5 cm) or until piece measures 7³/₄" (8³/₄)" / 19.7 (22.2) cm. End with a WS row. Place a marker on each edge to mark the arm-hole. Change to Charts C and D with a 4 st garter ridge border between them as shown in Chart C.

Begin Neck Shaping:

When Front measures 10¹/₂" (12¹/₂)" / 26.7 (31.8) cm, remembering to keep sts in pattern, K across 18 (20) sts, place next 8 (10) sts on holder, work across remaining 18 (20) sts. Attaching extra balls of yarn, work both shoulders at the same time. Dec 1 st at each neck edge EOR 3 (5)x. When armhole measures 5¹/₄" (6¹/₄)" / 14 (15.9) cm, BO.

SLEEVES

Make 2. With MC, CO 22 (25) sts on size 9 US (5.5mm) needles. Work in garter st for 1³/₄" end with a WS row. Cut yarn, attach new color. Working in st st, inc 1 st on each edge of sleeve, starting on first row, as follows: every 3 rows 7 (1) times, then every 4 rows 1 (8) times for a total of 38 (43) sts. Cont in st st until entire sleeve piece meas 7¹/₂" (10¹/₂)" / 19.1 (26.7) cm. BO.

NECK RIBBING

Block sweater pieces before working neck ribbing. Sew left shoulder seam. Join MC, knit sts from back neck st holder, PU and k 10 (12) sts down left neck, k sts from front holder, PU and k 10 (12) sts up other neck edge.

Row 1: K1, p1 across row.

Row 2 and all remaining rows: K the knit

and p the purl sts.

Work ribbing for 1" / 2.5 cm and BO loosely.

FINISHING

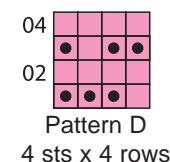
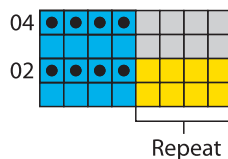
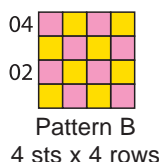
Sew right shoulder seam. Sew in sleeves. Sew underarm and side seams.

Legend

- K1 on RS, p1 on WS
- P1 on RS, k1 on WS
- SI first 2 sts to holder and hold in front of work, k next 2 sts from holder

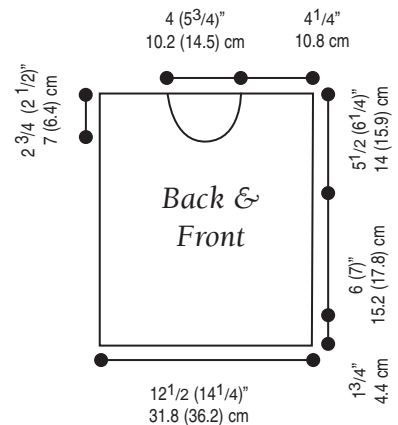
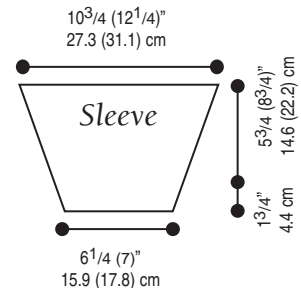
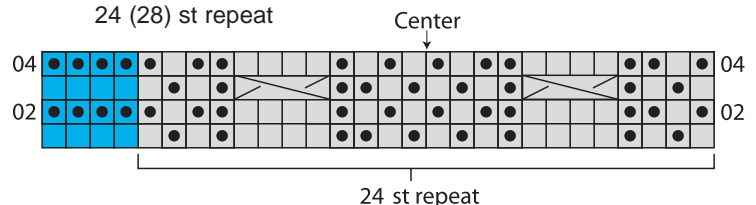
Color Key

- Pink
- White
- Gray
- Blue



Pattern C
8 sts x 4 rows,
4 st repeat

Pattern A
28 (32) sts x 4 rows,
24 (28) st repeat



This special doll was designed to chase away the fears and uncertainties in the lives of little people facing serious illness. She's cheerful, snuggly, comforting, and lots of fun to make. - Designed by Joyce R. Elliott

Editors Note: Joyce makes this doll for the Ronald McDonald House in her area and customizes the skirt with the house name on the back.

Materials

- 4-Ply worsted weight yarn in white, red, yellow and flesh or pale pink
- Six Size 4 US (3.5 mm) dpns, six size 5 US (3.75 mm) dpns
- Felt scraps in white, dark red, pink and blue (or green)
- Finepoint permanent marker (black or brown)
- Stitch holders
- Several large safety pins
- Sewing needle and thread
- Polyester fiberfill
- Tapestry needle
- **Optional:** crochet hook, size 2 US (2.75 mm) or size 3 US (3.25 mm) needles, size 5 US (3.75 mm) circular needle

NOTE: M1 is done by knitting into the front and back of the next st.

HEAD

With size 4 US (3.5 mm) dpns, starting at the top of the head with pink, cast on 10 sts. Divide onto 5 ndls, 2 sts per ndl. Place marker at beginning of round.

Rnd 1: K.

Rnd 2: *K1, m1, repeat from * (15 sts).

Rnd 3: *K1, m1, k2, repeat from * (20 sts).

Rnds 4-9: *K1, m1, k2, repeat from * (50 sts total, 10 sts per ndl).

Rnds 10-19: K.

Rnd 20: K22, k2tog, k2, k2tog, k22 (48 sts).

Rnds 21 - 22: K.

Start Nose Shaping:

Rnd 23: K23, inc by picking up a loop between 23rd and 24th st, k1, inc by picking up a loop between 25th and 26th st (50 sts).

Rnd 24: K.

Rnd 25: Repeat Rnd 23, k3 between inc's (52 sts).

Rnd 26: K.

Rnd 27: Repeat Rnd 23, k5 between inc's (54 sts).

Rnd 28: K.

Rnd 29: K23, k3tog, k2, k3tog, k23 (50 sts).

Rnds 30-33: K. At this time, patch any holes by nose.

Rnd 34: K1, k2tog, k5, k2tog, k5, k2tog, k16, k2tog, k5, k2tog, k5, k2tog, k1 (44 sts).

Rnd 35: K5, k2tog, k5, k2tog, k16, k2tog, k5, k2tog, k5 (40 sts).

Rnd 36: K2, k2tog, k2, k2tog, k2, k2tog, k2, k2tog, k8, k2tog, k2, k2tog, k2, k2tog, k2, k2tog, k2 (32 sts).

Rnd 37: .K2, k2tog, k2, k2tog, k2, k2tog, k2, k2tog, k2, k2tog, k2, k2tog, k2, k2tog, k2, k2tog, k2 (26 sts).

Rnd 38: K2, k2tog, k2, k2tog, k2, k2tog, k2, k2tog, k2, k2tog, k2, k2tog (18 sts).

Rnd 39: Add white (sweater color) and k around with both colors held tog as 1 yarn (36 sts). Cut pink yarn.

COLLAR

Use only white yarn now.

Rnd 1: K36.

Rnd 2: K1, *inc in next st, k1, repeat from * (54 sts).

Rnds 3 - 11: K.

Rnd 12: *K4, k2tog, repeat from * (45 sts).

Bind off tightly.

SWEATER

Continue with white yarn and size 5 US (3.75 mm) circular ndl or dpns. Starting at center Back, pick up 32 sts under Collar at neck edge as follows: 8 sts along left Back, 16 sts along Front and 8 sts along right Back.

Rnd 1: Inc in each st (64 sts). Move sts to size 5 US (3.75 mm) dpn.

Rnd 2: K.

Rnd 3: From center Back, k10, place marker, k8, place marker, k20, place marker, k8, place marker, k10.

Rnd 4: K, inc in sts before and after each marker (8 inc).

Rnd 5: K.

Rnds 6 - 25: Repeat rnds 4 and 5 until there are 28 st between Sleeve markers.

Rnd 26: From center Back using size 5 (3.75 mm) circular ndl, k to beginning of second (right) Sleeve. Keep markers in place.

SLEEVES

Place 28 sts on 3 size 5 US (3.75 mm) ndls (9 sts, 10 sts, 9 sts). Place remaining sts on holders. Do not cut yarn.

Rnd 1: With fourth dpn and white yarn, k starting with first ndl of 9 sts.

Rnds 2 - 5: K.

Rnd 6: Attach red yarn, k. (Use red yarn in Rnds 6, 7, 9, 10, 11, 14 and white on Rnds 8, 12, 13).

Rnd 7: K1, k2tog, k22, k2tog, k1 (26 sts).

Rnds 8 - 12: K.

Rnd 13: K1, k2tog, k20, k2tog, k1 (24 sts).

Rnds 14 - 19: K.

Rnd 20: K1, k2tog, k18, k2tog, k1 (22 sts).

Rnds 21 - 31: K.

Finished Size:

Approximately 27 inches tall

SKILL: Advanced

GAUGE: Not critical

Rnd 32: (Ndl 1) k2, k2tog, k2, k2tog; (Ndl 2) k1, k2tog, k1, k2tog; (Ndl 3) k2, k2tog, k2, k2tog (16 sts).

Rnd 33: K.

Rnd 34: (Ndl 1) k2, m1, k2, m1; (Ndl 2) k1, m1, k1, m1; (Ndl 3) k2, inc, k2, inc (22 sts.)

Rnd 35 - 39: K.

Rnd 40: Repeat Rnd 32.

Bind off with smaller ndls. Weave yarn into Sleeve underside. For second Sleeve, put sts onto 3 dpns and repeat Rnds 1 through 40.

HANDS

Make 2. With flesh or light pink color pick up 18 sts, 6 sts per ndl, on three size 4 US (3.5 mm) dpn from Rnd 32 of Sleeve.

Rnd 1 - 11: K.

Rnd 12: *K2tog, repeat from.*

Cut yarn, leaving 10"-12" / 25.4-30.5 cm tail. Thread this into large tapestry ndl and take sts off all three ndls. Draw up tightly and fasten. Stuff Hands and lower Sleeve now. Weave in yarn tail.

Resume Body:

Rnd 27: With size 5 US (3.75 mm) circular ndl and white yarn, starting at center Back, k19, k2tog, k38, k2tog, k19 (78 sts). Mark center Back for beg of rnd.

Rnd 28: K.

Rnd 29: Attach red yarn, k. Use red yarn in Rnds 29, 30, 32, 33, 34, 36, 37, white yarn in remaining rnds.

Rnds 30-40: K.

Rnd 41: *K2tog, repeat from * (39 sts). Place on 4 dpn, in this order: 10, 10, 10 and 9 sts.

Rnd 42: With red, k. Dec 1 st on each ndl (9 sts on each ndl).

Rnd 43: K.

Rnds 44 - 45: Continuing with red, attach yellow, k using yellow every other st.

Rnds 46 - 47: Reverse red and yellow sts from last two rnds for checkerboard.

Rnds 48 - 49: Repeat Rnd 44. Cut yellow and secure.

Rnds 50 - 51: K with red only.

SKIRT

Rnd 1: With size 5 US (3.75 mm) ndls and red yarn, inc in each st (72 sts). Change to circular ndl when needed.

Rnd 2: K.

Rnd 3: *K2, m1, repeat from * (96 sts).

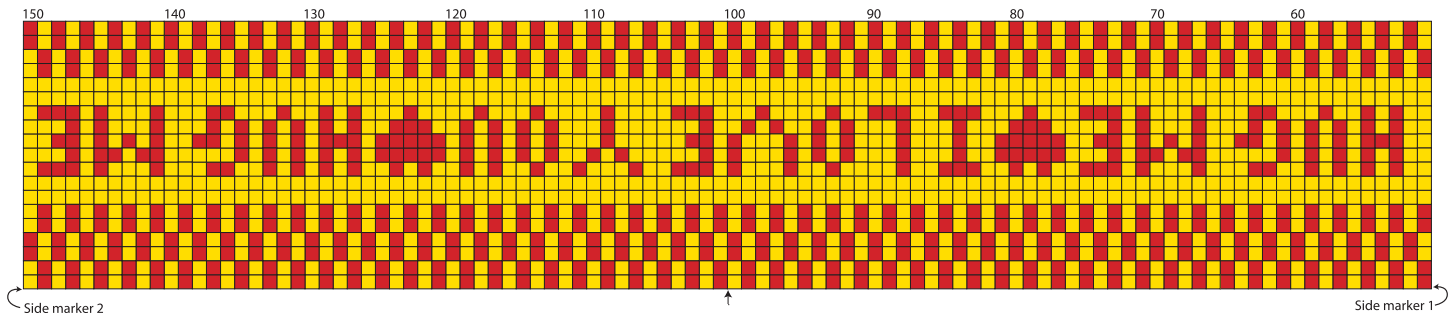
Rnd 4: K.

Rnd 5: K, inc 4 times, evenly spaced in rnd (100 sts).

Rnd 6: K.

Rnd 7: Repeat Rnd 1 (200 sts).

Rnds 8 - 9: K. Place markers at center Back, center Front, and both sides (50 sts between markers).



Rnds 10 - 13: K.
Rnd 14: Begin graph pattern and k.
Rnds 15-34: K following graph.
Rnd 35: *Yo, k2tog, repeat from.*
Rnd 36: Bind off. Steam press skirt.

PANTIES

Starting at center Back, turn up skirt, and with white yarn pick up 32 sts with four size 5 US (3.75 mm) dpns (8 sts on each ndl) from Rnd 50 or 51.

Rnd 1-7: K.
Rnd 8: K2, inc in next st, k2, inc in next st, k2, k16, k2, inc in next st, k2, inc in next st, k2 (36 sts).
Rnd 9: K4, inc in next st, inc in next st, k4, k16, k4, inc in next st, inc in next st, k4 (40 sts; 10 on each ndl).
Rnds 10-30: K.
 Divide sts from ndl 1 and ndl 2 onto 3 ndls (20 sts total divided as follows: 7, 6, and 7 sts).
Rnd 31: (Ndl 1) Inc in first st, k6; (Ndl 2) inc in next st, k4, inc in next st; (Ndl 3) k6, inc in next st (24 sts).
Rnds 32-33: K.
Rnd 34: Inc in each st (48 sts).
Rnd 35: *Yo, k2tog, repeat from.*
 Bind off.
 Repeat Rnd 1-35 for 2nd leg opening.

LEG

Make 2. Starting at center of Leg Back, place marker for beginning of rnd. Pick up 24 sts on 3 ndls (8 sts on each ndl). Place remaining 24 sts on holder(s).
Rnds 1-50: K.
Rnd 51: Place 6 sts onto large safety pin, repeat with next 6 sts, put next 6 sts onto to back of first ndl, turn.
Rnd 52: Sl 1, p11.
Rnd 53: Sl 1, k11.
Rnds 54 - 60: Repeat Rnds 52 and 53, ending with Rnd 52.
Rnd 61: Sl 1, k5, k2tog, k1, turn. Sl 1, p3, p2tog, p1, turn. Sl 1, k3, k2tog, k1, turn. Sl 1, p2, p2tog, p1, turn. Sl 1, k3, pick up 5 st on side of heel, place 12 sts from pins onto Ndl 2. With Ndl 3 pick up 5 sts from other side of heel. K2 from Ndl 1 on with the last 5 sts picked up. Place 2 sts from Ndl 2 on to Ndl 1 and 2 sts from other end of Ndl 2 to Ndl 3 (10, 8, 10 sts on ndls).
Rnd 62: (Ndl 1) k7, k2tog, k1; (Ndl 2) K8; (Ndl 3) k1, k2tog, k7.
Rnd 63: (Ndl 1) k6, k2tog, k1; (Ndl 2) K8; (Ndl 3) k1, k2tog, k6 (8 sts on each ndl).
Rnds 64 - 71: K.

Center Front & Back
 Start here and knit from right to left. At the side marker, move to the right side of the graph and knit a complete repeat. At the end of the left Front side, resume knitting on the back from the Side 1 Marker until you return to center Back.

Rnd 72: Place 2 sts from Ndl 1 and Ndl 3 onto Ndl 2 (6, 12, 6 sts on each ndl) with Ndl 2 being the top of the foot.
Rnd 73: (Ndl 1) k3, k2tog, k1; (Ndl 2) k1, k2tog, k6, k2tog, k6, k2tog, k1; (Ndl 3) k1, k2tog, k3.
Rnd 74: K.
Rnd 75: (Ndl 1) k2, k2tog, k1; (Ndl 2) k1, k2tog, k4, k2tog, k1; (Ndl 3) k1, k2tog, k2.
Rnd 76: K.
Rnd 77: (Ndl 1) k1, k2tog, k1; (Ndl 2) k1, k2tog, k2, k2tog, k1; (Ndl 3) k1, k2tog, k1.
Rnd 78: K.
Rnd 79: (Ndl 1) k1, k2tog; (Ndl 2) k1, k2tog, k2tog, k1; (Ndl 3) k2tog, k1. Place sts from Ndls 1 and 3 on one ndl. Ndls 1 and 4 now have 4 sts each. Cut yarn leaving a 12" / 30.5 cm tail. Finish stuffing. Weave toe closed.
Close Head: After body is completely stuffed, pick up top 10 cast-on sts. Weave thread through these sts and pull closed tightly. Hide thread ends.

SHOES

Make 2. With size 5 US (3.75 mm) ndls and red yarn, cast on 13 sts. Slip first st of every row.
Row 1: Sl 1, k5, inc in next st, k6 (14 sts).
Row 2: Sl 1, p5, k2, p6.
Row 3: Sl 1, k5, inc in next 2 sts, k6 (16 sts).
Row 4: Sl 1, p5, k4, p6.
Row 5: Sl 1, k5, inc in next st, k2, inc, k6 (18 sts).
Row 6: Sl 1, p5, k6, p6.
Row 7: Sl 1, k5, inc in next st, k4, inc in next st, k6 (20 sts).
Row 8: Sl 1, p5, k8, p6.
Row 9: Sl 1, k20.
Row 10-21: Repeat Rows 8 and 9 until 21 rows are completed. Put sts onto 3 ndls with 6 sts on each side of bottom center and 8 sts on top (6, 8, and 6 sts per ndl).
Rnd 22: K.
Rnd 23: (Ndl 1) p4, k2; (Ndl 2) k8; (Ndl 3) k2, p4.
Rnd 24: (Ndl 1) k2, k2tog, k2 (Ndl 2) k8; (Ndl 3) k2, k2tog, k2.
Rnd 25: (Ndl 1) p3, k2; (Ndl 2) k8; (Ndl 3) k2, p3.
Rnd 26: (Ndl 1) k3; (Ndl 2) k and place next 12 sts on this ndl; (Ndl 3) k3, p3. Place sts from Ndl 1 onto Ndl 3.

Row 27: (Top of shoe) (Ndl 2) k2tog, k8, k2tog. Turn.
Row 28: Sl 1, p8, sl 1. Turn.
Row 29: K2tog, k6, k2tog. Turn.
Row 30: Sl 1, p6, sl 1. Turn.
Row 31: K2tog, k4, k2tog.
Rnd 32: (Ndl 1) k6, place last st onto free ndl; (Ndl 2) add p3, and (Ndl 3) k3 from red sole of shoe, plus 1 from Ndl 1 (4 sts on each ndl).
Rnd 33: (Ndl 1) k4 (top ndl); (Ndl 2) k2tog, k2; (Ndl 3) p2, k2tog.
Rnd 34: (Ndl 1) k4; (Ndl 2) k2tog; (Ndl 3) k2tog. Place sts from Ndls 2 and 3 onto one ndl (4 sts on each ndl). Weave toe closed.
Optional: Single crochet around top of shoe with yellow.

YELLOW SOLE

Make 2. Cast on 1 st with yellow.
Row 1: K and inc in st (2 sts).
Row 2: P2.
Row 3: K and inc in st (4 sts).
Row 4: P4.
Row 5: K and inc in first st, k2, inc in last st (6 sts).
Row 6: P6.
Row 7: Inc in first st, k4, inc in last st (8 sts).
Row 8: K8.
Row 9: P8.
Rows 10 - 19: Repeat Rows 8 and 9 five times.
Row 20: K1, k2tog, k2, k2tog, k1 (6 sts).
Row 21: P6.
Row 22: K1, k2tog, k2tog, k1 (4 sts).
Row 23: Bind Off.
 Sew soles onto shoes and shoes onto feet. Cut eyes and mouth from felt and attach to face. Outline eyes and add eyelashes in permanent marker if desired.

HAIR

Mark hairline. Cut 3" / 7.6 cm yarn pieces. Fold in half and pull loop through every second k st in head, then pull ends through loop with crochet hook. Tighten and fill in entire head. **Optional:** Use purchased wig, or make longer strands and braid pigtails.

Seafarer's Vest and Socks - Seamen's Church Institute

Join more than 3,500 knitters from every state who knit desperately needed and deeply appreciated items for seafarers through the [Christmas-at-Sea](#) program of the Seamen's Church Institute of New York and New Jersey. Most seafarers come from tropical or temperate countries and are unprepared for the frigid temperatures when they cross the North Atlantic in winter. Because demand exceeds the number of garments received, knitted items are collected year-round. Yarn is provided at no cost. Download patterns from the Seamen's Church Institute's web site, www.seamenschurch.org or contact Barbara Clauson, at 212-349-9090 Ext 257. Send items to: [Christmas-at-Sea, 241 Water Street, New York, NY 10038](#). The Christmas-at-Sea program began in 1898 during the Spanish American War. Last year, SCI chaplains distributed more than 14,000 Christmas-at-Sea packages. The Seamen's Church Institute's mission is to advance the personal, professional, and spiritual well being of mariners worldwide. Established in 1834, SCI is an ecumenical agency affiliated with the Episcopal Church. To learn more about SCI, go to www.seamenschurch.org.

Vest Size: Men's 38

Finished Length: 24" / 61 cm

SKILL: Advanced Beginner

GAUGE: 5 sts and 7 rows = 1" / 2.5 cm

NOTES: If you make this vest for Seamen's Church, they request that you fold the vest once lengthwise, then across the middle before mailing. If they supplied your yarn, please return unused portion.

MATERIALS:

- Worsted weight yarn, either wool or acrylic, 12 - 20 oz.
- Size 4 US (3.5 mm) and size 6 US (4.0 mm) needles
- Crochet hook size F US (3.5 mm)
- Tapestry needle for weaving in ends
- Stitch holder

FRONT

With smaller needles cast on 88 sts. Work k2, p2 ribbing until piece measures 3" / 7.6 cm. Change to larger needles. Work stockinette stitch (k 1 row, p 1 row) until piece measures 12" / 30.5 cm, ending with RS row.

Pattern Row 1: K10, p across to last 10 sts, k10.

Pattern Row 2: K.

Repeat Pattern Rows 1 and 2 four times.

Armhole Shaping:

Row 1: Bind off 4 sts. K5, p to last 10 sts, k10.

Row 2: Bind off 4 sts. K across (80 sts).

Row 3: K6, p28, k12, p28, k6.

Row 4: K.

Repeat Rows 3 and 4 three more times.

V-Neck/Shoulder Shaping:

Row 1: K6, p28, k6, turn. Move remaining 40 sts onto stitch holder.

Row 2: K6, k2tog, k to last 8 sts, k2tog, k6.

Row 3: K6, p to last 6 sts, k6.

Row 4: K.

Row 5: K6, p to last 6 sts, k6.

Row 6:

K6, k2tog, k to last 8 sts, k2tog, k6.

Row 7:

K6, p to last 6 sts, k6.

Row 8: K.

Rows 9-32: Repeat Rows 5-8 six times more until 24 sts remain.

Row 33: K6, p to last 6 sts, k6.

Row 34: K6, k2tog, k across.

Row 35: K6, p to last 6 sts, k6.

Row 36: K.

Repeat Rows 33-36 once more (22 sts).

Row 37: K6, p10, k6.

Work even until armhole measures 10" / 25.4 cm. Bind off with medium tension.

Work opposite V-neck / shoulder as before, reversing shaping.

BACK

Work as for Front, through Armhole Shaping.

Shoulder Shaping:

Row 1: K6, p to last 6 sts, k6.

Row 2: K6, k2tog, k to last 8 sts, k2tog, k6.

Row 3: K6, p to last 6 sts, k6.

Row 4: K.

Repeat Rows 1-4 until 64 sts remain.



Next Row: K6, p52, k6.

Work even until piece is 10 rows shorter than finished front.

NECK EDGE

Row 1: K6, p10, k32, p10, k6

Row 2: K.

Repeat Rows 1 and 2 four times. Bind off.

FINISHING

Join shoulder and side seams with the two edges touching – not overlapping. Sew together with medium tension so that seams are flexible.

MATERIALS:

- DK or sport weight yarn, either acrylic or wool in solid dark colors only
- Size 2 US (3 mm) double pointed needles (Set of 4)
- Size F US (3.5 mm) crochet hook
- Tapestry needle

NOTES: 1) Please do **NOT** use worsted weight yarn. 2) To ensure an elastic cuff edge, cast on by holding two needles together. 3) The Kitchener Stitch, used to weave the toe closed, is the process of seamlessly joining two sets of live stitches. Refer to a basic knitting resource for detailed instructions.

Sock Size: Men's Average

Finished dimensions:

Leg: 14" (35.6 cm)

Foot: 11.5" (29.2 cm)

SKILL: Adv Beginner

GAUGE: 6.5 sts = 1" / 2.5 cm

SOCK

Cuff: Using size 2 US (3 mm) dpn, cast on 56 sts: Ndl #1, 20 sts; Ndl #2, 20 sts; Ndl #3, 16 sts. Work a k2, p2 ribbing until piece measures 3" / 7.6 cm.

Leg: K all rounds until leg measures 11" / 27.9 cm.

Heel: Divide sts as follows: Ndl 1, 28 sts (for heel tab); Ndl 2, 14 sts; Ndl 3, 14 sts. Work back and forth on Ndl 1, ending with Row 1.

Row 1 (RS): Sl 1, k across, turn.

Row 2 (WS): Sl 1, p across, turn.

When there are 13 sl sts at the rt edge (with WS facing) you are ready to turn the heel.

Turn Heel:

Row 1 (WS): P16, p2tog, p1, turn.

Row 2 (RS): Sl 1, k5, ssk, k1, turn.

Row 3: Sl 1, p6, p2tog, p1, turn.

Row 4: Sl 1, k7, ssk, K1, turn.

Row 5: Sl 1, p8, p2tog, p1, turn.

Continue in this manner until 16 sts are left on the ndl with RS facing

Gusset: Begin on right side of heel tab. Pick up and knit 14 sts on side of heel and place onto first ndl. K sts of Ndl 2 and Ndl 3 onto Ndl 2. Pick up and knit 14 sts on other side of heel tab and

place onto Ndl 3. K14 sts from Ndl 1 onto Ndl 3 (28 sts on each ndl).

Rnd 1: K.

Rnd 2: Ndl 1, K to within 3 sts of end, k2tog, k1. Ndl 2, k. Ndl 3, k1, ssk, k to end.

Repeat these two rounds until you have 14 sts on Ndl 1, 28 sts on Ndl 2 and 14 sts on Ndl 3.

Foot: Knit around until sock measures 9¹/₂" from back of heel to stitches on ndl. Allow 2" / 5 cm for toe. Foot should measure 11¹/₂".

Toe:

Rnd 1: Ndl 1, k to within 3 sts of end, k2tog, k1. Ndl 2, k1, ssk, k to within 3 sts of end, k2tog, k1. Ndl 3, k1, ssk, k to end.

Rnd 2: K.

Repeat these two rounds until 20 sts remain. K the 5 sts from Ndl 1 onto Ndl 3 (20 sts on each ndl).

Close Toe: Using Kitchner stitch to weave toe closed, join both sets of live stitches.



Washcloth and Toiletry Holder

Yarn Available from: Spinrite, Inc., P.O. Box 435, Lockport, NY 14094 • inquire@spinriteyarns.com

A gift with a dual purpose. Open the Velcro ends and the inside pockets contain supplies (toothbrush, toothpaste, soap and a comb) for daily personal use. The outside is a washcloth. Recipients of this item might include homeless shelters, women's crisis shelters and children's shelters. - Designed by Jeannine Harris

MATERIALS:

- Sugar 'N Cream (100% Cotton) worsted weight yarn, 2¹/₂ oz (70 g) skeins: 1 skein, Delft Blue
- Size 7 US (4.5 mm) or size needed to obtain gauge
- 1¹/₂" / 1.3 cm Velcro rounds

• Hot glue gun and glue sticks

• Tapestry needle for weaving in ends

Stitch Pattern

Modified Moss Stitch: Knit over even number of stitches

Row 1 (RS): K.

Row 2 (WS): *K1, p1; rep from * across row.

Row 3: K.

Row 4: *P1, k1; rep from * across row. Repeat Rows 1-4 for pattern.

HOLDER

Cast on 52 sts. Work in moss pattern until

piece measures 11¹/₂" / 29.2 cm from cast on edge. Bind off in pattern. Work in all loose ends. Block to measurements.

FINISHING

WS facing, fold piece up from bottom to make a 4" / 10.2 cm pocket. Sew side seams. Make 3 divisions within the large pocket (approx 3³/₄" / 9.5 cm each) by mea-

Finished Sizes:

Knitted: 11" (29 cm) square

Seamed: 7" x 11" (19 cm x 29 cm)

SKILL: Beginner

GAUGE: 18 st and 24 rows = 4" / 10 cm in Modified Moss Stitch pattern



suring and sewing 2 seams. Place and glue Velcro tabs 1¹/₂" / 1.5 cm from right outside and left inside edges for closures.

Row 4: BO 4 sts, p to end.

Row 5: Ssk, k to 2 sts before end, k2tog (59 sts).

Row 6: K (Horizontal Ridge row).

Continue even in Horizontal Ridge pattern 7 more times, ending with ridge row. Armhole measures 5¹/₂" / 14 cm. 16 ridges total from bottom.

Row 7: K.

Row 8: P.

Row 9: K13, put on holder, BO 33, k13, place on holder.

RIGHT FRONT

Patterned Rib: CO 50 stitches.

Row 1 (RS): K5, slip as if to knit, k5, p2, PM, *Patt A, p4. Repeat from * 3 times more, end with Patt A, k1.

Row 2 (WS): P1, *Patt A Row 2, k4. Repeat from * 3 times more, end with Patt A, k2, SM, p11.

Rows 3 and 4: Repeat Rows 1 and 2.

Row 5: Repeat Row 1.

Row 6: P1, *Patt A Row 2, k4.* Repeat 3 times more, end with Patt A, k2, SM, k5, p6.

Rows 7-12: Repeat Rows 1-6.

Beg Front Body:

Row 1 (RS): K5, slip as if to knit, k5, p2, SM, Patt A Row 1, p2, Patt B Row 1, p2, k17.

Row 2: P17, k2, Patt B Row 2, k2, Patt A Row 2, SM, k2, p11.

Row 3: K5, slip as if to knit, k5, p2, SM, Patt A Row 1, p2, Patt B Row 3, p2, k17.

Row 4: P17, k2, Patt B Row 4, k2, Patt A Row 2, SM, k2, p11.

Row 5: K5, slip as if to knit, k5, p2, SM, Patt A Row 1, p2, Patt B Row 5, p2, k17.

Row 6: P17, k2, Patt B Row 6, k2, Patt A Row 2, SM, k2, k5, p6.

Repeat these six rows 7 times more, ending with Row 6. (10 horizontal ridges, about 7³/₄" / 19.7 cm.)

Right Front Armhole Decreasing: Continue in patt as established.

Row 1 (RS): Repeat Row 1 of Right Front Body.

Row 2: BO 5 sts, continue in pattern.

Row 3: Repeat Row 3 of Right Front Body.

Row 4: BO 4 sts, continue in pattern.

Row 5: Repeat Row 5 of Right Front Body.

Row 6: P2tog, continue in pattern (40 stitches left). There are 7 stitches in stockinette at armhole edge followed by patts and Front band. Continue even in 6-row Right Front Body. pattern as established for 5 more patts (4" / 10 cm, 14 rib ridges.)

Shape Right Front Crew Neck:

Row 1 (RS): BO 17, k to end.

Row 2: P23.

Row 3: BO 3, k to end.

Row 4: P20.

Row 5: BO 2, k to end.

Row 6: K18.

Row 7: BO 2, k to end.

Row 8: P16.

Row 9: Ssk, k to end.

Row 10: P15.

Row 11: Ssk, k to end.

Row 12: K14.

Row 13: Ssk, k to end.

Row 14: P13, place on holder.

LEFT FRONT

CO 50 stitches.

Row 1: K1, *Patt A, p4, repeat from * 3 times more, end with Patt A, p2, PM, k5, slip as if to knit, k5.

Rows 2 - 4: P11, SM, k2, *Row 2 Patt A, k4.* Repeat 3 times more, ending with Patt A, p1.

Rows 5 and 6: Repeat Rows 1 and 2.

Row 7: Repeat Row 1.

Row 8: P6, k5, SM, k2, *Patt A Row 2, k4.* Repeat 3 times more, ending with Patt A, p1.

Rows 9 - 14: Repeat Rows 1-6.

Left Front Body:

Row 1 (RS): K17, p2, Patt B Row 1, p2, Patt A Row 1, SM, p2, k5, slip as if to knit, k5.

Row 2: P11, k2, SM, Patt A Row 2, k2, Patt B Row 2, k2, p17.

Row 3: K17, p2, Patt B Row 3, p2, Patt A Row 1, SM, p2, k5, slip as if to knit, k5.

Row 4: P11, k2, SM, Patt A Row 2, k2, Patt B Row 4, k2, p17.

Row 5: K17, p2, Patt B Row 5, p2, Patt A Row 1, SM, p2, k5, slip as if to knit, k5.

Row 6: P6, k5, k2, SM, Patt A Row 2, k2, Patt B Row 6, k2, p17.

Repeat Left Front Body rows 7 times more, ending with Row 6. (10 horizontal ridges, 7³/₄" / 19.7 cm.)

Left Armhole Decreasing: Continue in pat-



tern as established.

Row 1 (RS): BO 5 sts, continue in pattern.

Row 2: Repeat Row 2 Left Front Body.

Row 3 (RS): BO 4 sts, continue in pattern.

Row 4: Repeat Row 4 Left Front Body.

Row 5: K2tog, continue in pattern (40 sts).

Row 6: Repeat Row 6 Left Front Body.

You have 7 stitches in stockinette at armhole edge followed by patts and Front band.

Continue in Row 6 Left Front Body pattern as established for 5 more patterns. (4" / 10 cm, 14 rib ridges.)

Shape Left Front Crew Neck:

Row 1 (RS): K.

Row 2: BO 17, p to end.

Row 3: K23.

Row 4: BO 3, p to end.

Row 5: K20.

Row 6: BO 2, k to end.

Row 7: K18.

Row 8: BO 2, p to end.

Row 9: K16.

Row 10: P2tog, p to end.

Row 11: K15.

Row 12: Ssk, k to end.

Row 13: K14.

Row 14: Ssk, k to end, put 13 sts on holder.

SLEEVES

CO 36 sts using cable cast on.

Row 1 (RS): (K1, p1) 8 times, Patt A, (k1, p1) 8 times.

Row 2: (P1, k1) 8 times, Patt A row 2, (p1, k1) 8 times.

Rows 3 and 4: Repeat Rows 1 and 2, ending with Row 2, for 1¹/₂" / 3.8 cm.

Row 5: K14, PM, p2, Patt A, p2, PM, k14.

Row 6: P to marker, SM, k2, Patt A Row 2, k2, SM, p to end.

Row 7: K to marker, SM, p2, Patt A, p2, SM, k to end.

Row 8: Repeat Row 4.

Row 9 (RS): (Inc row) K1, inc, k to marker, SM, p2, Patt A, p2, SM, k to 3 sts from end, inc, k2.

Repeat Rows 4-7, until you have 70 sts (16

increases, 4 rows apart). Continue even until piece measures 12" / 30.5 cm to armhole.

Sleeve Cap Shaping: Keeping in pattern, BO 5 sts at beginning of next 2 rows, then BO 4 sts beg of next 2 rows, then on next row (RS) dec at each end of needle (50 sts).

Row 1: Work 1 (WS) row in pattern.

Row 2: Dec each end of needle. Repeat Rows 1 and 2 once more.

BO 3 sts at beg of next 6 rows, BO 4 sts at beg of next 2 rows. Stop pattern and change to stockinette stitch. BO 4 sts at beg of next 2 rows. BO remaining 12 sts.

FINISHING

Work a three needle bind off for shoulders.

Pick up neck stitches, starting and ending at slip stitch in Front bands. Work ³/₄" / 1.9 cm of k1, p1 rib and BO. Turn under Front band facings and stitch. Sew on snaps. Sew side seams. Block Sleeves, sew Sleeve seams. Sew Sleeves into sweater.

Holiday Stirrup Covers

MATERIALS:

- Worsted weight yarn, 1 skein orange or red with black or white for embellishment

- Size 6 US (4 mm) and 8 US (5 mm) ndls
- Tapestry needle

Finished Size:

Approx. 9¹/₂" from top to bottom

SKILL: Beginner

GAUGE: 20 st & 26 rows = 4" / 10 cm

With size 6 US (4 mm) needles cast on 40 stitches of main color. Work k2, p2 rib until piece measures about 4" / 10.2 cm. K2tog, p2tog across row (20 stitches). Work k1, p1 rib for 3 rows. Change to size 8 US (5 mm) needles. Increase 1 stitch in every stitch across row (40 stitches).

Knit in stockinette stitch for 5" / 12.7 cm. K2tog across row. P next row. K2tog across row. Cut yarn, leaving about a 20" / 50.8 cm tail. Draw thread through remaining stitches. Embroider or duplicate stitch black jack-o-lantern face on orange covers for Halloween and white snowflakes on red covers for winter holidays. Then draw yarn tightly through remaining stitches and sew seam.

"Just because you're having your annual exam, you can still have a sense of humor," I tell my clients at the health department where I work. They often get a chuckle out of the pattern of these stirrup covers."

Designed by Karen Dziuba



Angel Gown & Hat Set

Every parent, regardless of the size of their baby, should have something special for their tiny angel to wear. Premies have a special place in my heart, and I provide Angel Gown sets and clothing to my NICU.

- Designed by Barbara Wampler

MATERIALS:

- Fingering or baby weight yarn
- Size 4 US (3.5 mm) and size 5 US (3.75 mm) needles
- 1/4" (0.6 cm) Ribbon
- Crochet hook, appropriate for yarn size
- Needle and matching thread for tacking ribbon trim
- Stitch markers (4)
- 4-6 small snaps

STITCH PATTERNS

Sleeve Pattern Stitch for Yoke:

Row 1: K across, increasing one st before and after each marker.

Row 2: K3, p across, ending with k3.

Skirt Pattern Stitch: Multiple of 9 sts + 6

selvage sts (3 knit sts for each Back edge)

Row 1: K across

Row 2: K3, p across, ending with k3.

Row 3: K3, *yarn over (yo), p1, p3tog, p1, yo, k4*, repeat from * to * across, ending with k3.

Row 4: Repeat Row 2.

Row 4: K across.

Row 5: K9, inc in next st, (k10, inc in next st) 3 times, k9 (56 sts in work).

Row 6: K3, p across, ending with k3.

Row 7: K10, inc in next st, place marker on needle, inc in next st, k6, inc in next st, place marker on needle, inc in next st, k16, inc in next st, place marker on needle, inc in next st,

k6, inc in next st, place marker on needle, inc in next st, k10. (You should have 12 sts for each Back edge, 10 sts for each Sleeve, and 20 sts for Front).

Row 8: Repeat Row 6. Moving markers on each row, work around increasing before and after sleeve markers until you have 21 sts for Back edges, 28 sts for Sleeves and 38 sts for Front. End with Row 2 (136 sts).

FRONT & BACK

Row 1: K across 21 sts, cast on 4 sts, slip next 28 sts to holder (Sleeve), knit across 38 sts for Front, cast on 4 sts, slip next 28 st to holder (Sleeve), knit last 21 sts (88 sts total)

Row 2: K3, p across, k3.

Row 3: K1, *inc in next st, k2*, repeat from * across, ending with inc in next st, k1. (116 sts total)

Size:

3-5 lb Premature Baby

SKILL: Intermediate

GAUGE: Not critical

NOTES: 1) This pattern can be used as a burial set and donated to your local NICU. It can also be made as a special occasion dress instead of a gown. 2) You may want to use the same skirt pattern and make a matching blanket. 3) Any yarn/needles you have on hand can be used, since babies come in all sizes. 4) I prefer white for burial sets, but pastels can also be used. 5) The pattern used enables me to thread ribbon vertically down the front of the gown, but any pattern can be substituted. If you select a stitch pattern with an open lace design, please add a cotton or silk underskirt.

Row 4: K3, p across increasing 2 sts, k last 3 sts. (118 sts total)

Row 5: K2, *yo, k2tog, repeat from * across ending with yo, k2 sts (eyelet row).

Row 6: K3, p across to last 2 sts, inc in next st, k1. (119 sts total)

SKIRT

Change to size 5 US (3.75 cm) ndls and work Skirt Pattern Stitch, Rows 1-4. Pattern is a multiple of 9 sts + 6 sts (3 knit sts for each back edge). You will have 12 complete patterns repeats and a 1/2 repeat to make Front edges symmetrical. Repeat Rows 1-4 until desired length, ending with Row 4. Knit 2 rows garter st and BO.

Ribbon Notes: If you're adding ribbon vertically down the front of gown, you need to have an even number of pattern rows in order for the ribbon to end in the proper place. Gown can be 13-17" / 33 -43.2 cm long, or keep it shorter as a dress.

SLEEVES

Place sleeve sts on size 4 US (3.5 cm) ndls, join yarn and work the following 4 rows one time:

Row 1: *K2, inc in next st, repeat from * across, knitting last st (37 sts total).

Row 2: P across.

Row 3: K2, *yo, p1, p3tog, p1, yo, k2, repeat from * across.

Row 4: P across.

Work following four rows 3 times (12 rows total).

Row 1: K across.

Row 2: P across.

Row 3: K2, *yo, p1, p3tog, p1, yo, k2, repeat from * across.

Row 4: P across.

Twelve rows have not been knitted.

Row 13: K3, *k2tog, k3, repeat from * across knitting last 2 sts (30 sts total).



Rows 14-18: K in garter st.

BO all sts.

NOTE: If you want ribbon through sleeve edges work Rows 14-18 as follows, making an eyelet row.

Rows 14 and 15: K.

Row 16: K, *yo, k2tog, repeat from * across

Row 17 and 18: K.

Thread ribbon through eyelet row.

GOWN FINISHING

Thread ribbon through neck and bodice eyelet rows. For vertical ribbon, start by threading ribbon from the wrong side through the first Row 3 of pattern and ending ribbon on the wrong side of bottom of gown. Tack ribbon in place at each end. Sew snaps to close back of gown.

HAT

Using size 5 US (3.75 mm) ndls, cast on 56

sts.

Row 1: (RS) *K1, inc in next st, repeat from * across, ending with k1 in last st (83 sts total).

Row 2: P across.

Row 3: *K2, inc in next st, repeat from * across, ending with k1 in last st (102 sts total).

Row 4: P across.

Row 5: K across.

Row 6: P across.

Row 7: K5, *k2tog, yo, repeat from * across, ending with k5.

Row 8: P.

Row 9: K3, *yo, p1, p3tog, p1, yo, k4, repeat from * across, ending with k3.

Row 10: P.

Work Skirt Pattern stitch until piece measures approximately 4" / 10.2 cm.

Now, BO 17 sts, knit next 22 sts, and BO remaining 17 sts (22 sts total).

Join yarn and purl across. Work in stockinette st (k1 row, p1 row) until back measures the same as side pieces, ending with a purl row. BO.

HAT FINISHING

Join yarn on bottom of hat where pattern row starts, and knit or crochet every other st around sides and bottom of hat, ending at beginning of pattern row on other side of hat. Sew side edges of hat together. Thread ribbon through Row 3 of first pattern row. If desired, you could thread and tack ribbon through all pattern rows #3 on hat.

Editors Note: We do not recommend using ties for the bonnet and gown unless baby is supervised for a special occasion such as pictures or this gown is used as a burial outfit.

When a pregnancy is lost early, the baby may be too small and fragile to dress for burial. This bunting serves to wrap the baby to be held, for pictures, and to be buried in as well. It's a small bit of comfort in the midst of a tragic time. I make each one with a prayer for the lost, hope for the chance to have a healthy baby in the future, and gratitude for my own healthy son. - Designed by Betsy Ann Dey

Finished Size:

8" (10") / 20.3 (25.4) cm square

SKILL: Adv Beginner

GAUGE: Not critical

NOTES: 1) Though the knitting is done back and forth, a circular needle is specified in order to pick up the triangle stitches easily.

Instructions on Use:

Place baby in bunting, fold one corner across, then the other, and then wrap the tie around and secure. The bunting is constructed from a mitered square with a mitered triangle for a pocket. It has a crocheted edge and length of crocheted chain as a tie (although ribbon can be used instead). Anything thicker than sport weight yarn makes the baby look smaller and has been described as "uncomforting". Variegated yarn works up nicely. Two sizes of buntings are given. Changing needle sizes will also change the size of the bunting.

MITERED SQUARE

CO 81 (101) sts. Repeat the following two rows until 3 sts remain:

Row 1 and all odd rows:

Work dec at center (corner) as follows: K to center 3 sts; sl 1, K2tog, PSSO, k to end of row.

Row 2 and all even

rows: K even across.

When 3 sts remain, sl 1, k2tog, PSSO. Fasten off.

MITERED TRIANGLE (forms pocket)

On CO edge of square just made, pick up 81(101) sts. Repeat the following two rows until 3 sts remain:

Row 1 and all odd rows:

K1, k2tog; k to center 3 sts; sl 1, K2tog, PSSO; k to last 3 sts, k2tog, k1.

Row 2 and all even

rows: K even across.

When 3 sts remain sl 1, k2tog, PSSO. Fasten off.

Shell Edging: With WS of pocket facing you, work 40 (50) sc across top of

MATERIALS:

- Sport weight yarn, approx 2 oz
- Size 6 US (4 mm) circular needle, 24" / 61 cm or larger
- Size G US (4.25 mm) crochet hook
- Tapestry needle
- Optional: Ribbon for ties



Continued on next page....

Littlest Angel Bunting

triangle pocket. Ch 4, turn.

Shell Row: [*Skip 2 sc; work (1 dc, 1 ch) 3 times, 1 dc in next st.* Repeat * to * once more; skip 2 sc, 1 dc in each of next 2 sts]. Repeat [to] across row, ending with 1 dc instead of 2. Fasten off.

For top edge, (2 remaining sides of the square): With WS facing you, work 39 (49) sc

across one side, 3 sc in top corner, 39 (49) sc down second side. Ch 3, ch 1 through last dc of triangle edging. Turn and work a row of the shell pattern described above, working an extra shell in the top corner. Fasten off.

Note that a crab stitch, (backwards single crochet) can be used for the edging instead.

Weave in all ends.

Crochet about 18" / 45.7 cm of chain. Thread through one corner of triangle pocket.

Optional: Attach ribbon tie instead of crochet chain.

Five Simple Projects

Hats Shown on Cover, Lower Right

Here's a collection of easy-to-knit items that will be treasured by recipients both young and old. - Designed by Lois Coddington

MATERIALS:

• Acrylic worsted weight yarns such as Red Heart or Caron

• Size 6 US (4 mm) and size 9 US (5.5 mm) straight needles, size 9 US (5.5 mm) circular needle 16" / 40.6 cm

• Stitch markers

• Crochet hook - size appropriate for yarn

• Tapestry needle

Sizes:

Baby Hat and Booties: Newborn

Slippers and Adult Hat: Average

Scarf: One size fits all

SKILL: Beginner

GAUGE: 16 sts and 28 rows = 4" / 10 cm

ABBREVIATIONS:

wyif = With yarn in front

PM = Place marker

SCARF

Note: This pattern works without a border, or with a 3 or 4 ridge garter stitch border on the top and bottom.

CO 27 sts (2 sts each side for garter st border, center 23 sts for pattern. Multiple of 4 sts + 3 sts).

Row 1: K3, *wyif sl next st purlwise, k3, repeat from * to last 3 sts, k3.

Row 2: K1, *wyif sl next st purlwise, k3, repeat from * to last 2 sts, wyif sl st purlwise, k1.

Repeat Rows 1 and 2 until desired length.

Stitch pattern from *The Encyclopedia of Knitting*, by Lesley Stanfield & Melody Griffiths; Stitch #15, "Cartridge Belt Rib."

FULL-OF-RIDGES BABY HAT

CO 48 st on size 6 US (4 mm) 12" / 30.5 cm circular needle or dpns. Join, being sure not to twist sts.

Rows 1 - 8: K.

Rows 9 - 16: *P 2 rows, k 2 rows, repeat from *.

Rows 17 - 19: P 2 rows, k 4 rows.

Repeat Rows 9 - 22, and then decrease as follows:

Rows 1 and 3: K2tog, k4, repeat to end.

Row 2: K.

Row 4: K2tog, k3, repeat to end.

Rows 5 and 6: K.

Row 7: K2tog, k2, repeat to end.

Rows 8 and 9: K.

Fasten off: Cut 12" / 30.5 cm long tail, thread through needle. Run yarn through all remaining sts, pull tight to secure. Can do fewer decrease rows if desired.

BABY BOOTIES

Using a thinner worsted weight yarn, size 6 US (4 mm) needles, CO 36 st, leaving a long enough tail to sew up back of bootie later.

Booties can be done in the pattern below or all in garter stitch. Measure after first row and it should be approximately 8" / 20 cm wide (less for a preemie). Adjust number of starting sts if using baby yarn and smaller needles.

Note: Sl the last st in each row as if to purl, and k the first st of the next row for entire bootie.

K 2 rows, p 2 rows, alternating for 5 purl ridges on right side. Change when the CO tail is on



the right hand end.

At the beginning of the next 2 rows, bind off 10 sts, purling the sts after the bind off.

Continue to k 2 rows, p 2 rows for 3 ridges. On the next k row, sl the first st and k2tog across row, k next row and p the next row, then work a row of p2tog and purl the last row. These rows can be worked however you want or is easiest for you to do. Let appearance be your guide. This makes a newborn size.

Optional: Crochet around the top edge if desired. Sew back and front seam.

TWO-IN-ONE HAT

You need to cast on more stitches than usual as this pattern draws in and isn't stretchy, but beautiful and easy! Use 2 contrasting colors. There are 2 ways of working this hat at the beginning. One is to use 8 or more stitches less for the roll brim and increase those stitches before working the pattern with the 2 colors. The second way is to change to the next size larger needle when starting the pattern with the 2 colors.

CO 64 sts (multiple of 8) on size 9 US (5.5 mm) circular needle, worsted yarn, light color first. Join without twisting and k 4 in garter st. Inc 8 sts in the last row before starting pattern

to 72 sts.

Version #1 (Red and White)

Rnd 1: With light color, k1, * sl 1, k3, continue from * around, ending sl 1, k2.

Rnd 2: Repeat Rnd 1.

Rnd 3: Drop light color and start with darker color, *k3, sl 1, repeat around.

Rnd 4: Repeat Rnd 3.

Repeat these 4 rnds until piece measures 7" / 17.8 cm, ending with Rows 1 and 2 of the pattern. K 2 rnds with the same light color before decreasing. This lets the slip sts carry up onto the plain part of the top of the hat for a very nice look. Cut dark yarn and begin dec with light color:

Decrease Rounds:

Rnd 1: *K2tog, k4, repeat from * around.

Rnd 2 and all even rnds: K.

Rnd 3: *K2tog, k3, repeat from * around.

Continue to decrease in this manner every other row, with one less st between the k2tog sts. Last dec rnd will be k2tog around.

Cut yarn, leaving 12" / 30.5 cm tail. Thread onto tapestry needle. Run tail through remaining sts, pull tight to secure. Weave in ends.

Version #2 (Gray and White)

Work pattern as above, but change colors every rnd instead of every other rnd for a different look. Work only Rnds 1 and 3, alternating the two colors.

GARTER STITCH BEDROOM SLIPPERS

NOTES: 1) Out of 2 skeins of Red Heart worsted you can make three pairs of slippers. After you make one pair, it isn't hard to adjust the pattern for larger or smaller feet. They are deceptively stretchy, fitting larg-



er feet than would be expected. This pattern was adapted from a baby bootie pattern, adjusted to fit an adult. It's quick and is a great pattern to use up scraps. 2) If the wearer usually wears out the soles because of hardwood floors, make another sole with single crochet or afghan stitch and sew to sole of slipper. 3) Hold 2 strands of yarn tog throughout.

Size Lg: (To make narrower slipper, use less stitches between turning stitches.) CO 49 st, leaving a 12" tail to sew up back of slipper later.

Row 1: Beginning with back (WS) k 20 sts, PM, p1, k7 (sole), PM, p1, k19, sl last st as if to purl.

Row 2: (RS) K.

Continue these two rows until you have 11 garter stitch ridges, then bind off 13 sts at beginning of the next 2 rows. Continue on the sts left for the foot for 11 more garter st ridges.

Decrease for toe as follows:

Row 1: K2, k2tog across row.

Row 2: K across row, including the p sts in the main part of the slipper.

Row 3: K1, k2tog across row.

Row 4: K.

Row 5: K2tog across row.

Row 6: K.

Cut yarn leaving 15-18" / 38.1-45.7 cm tail and use it to sew through remaining sts. Also, sew up the top of the foot and up the ankle on the outside (NOT the inside). This helps the slipper lay better. Sew up the back with the CO tail.

Crochet edging: With wrong side facing you, beginning at the back seam, attach yarn, sc, ch 3, dc in the first st, skip one ch, sc, ch 3, dc in next st and continue around. At end of round, join with sl st to first sc. **Optional:** Use contrasting yarn.



Pink Chemo Hat

Shown on Cover, Middle Bottom

This special chemo cap comes loaded with symbols for healing and encouragement. Pink symbolizes survival. White stands for peace and innocence. Green is for hope and healing. Laurel leaves are for victory. The jaunty tassel bouncing around the head is to keep depression at bay. - Designed by Irene Kubilius

Size: Average Adult

SKILL: Intermediate
GAUGE: 20 sts and 24 rows = 4" (10 cm)

MATERIALS:

- Worsted weight yarn; pink, white, green (2 shades)
- Size 7 US (4.5 mm) circular needle, 16" / 40.6 cm
- Size 7 US (4.5 mm) double pointed needles
- Crochet hook size H US (5 mm)
- Stitch Marker

The ribbing makes the hat fit snugly either pulled down or pushed up.

With pink yarn and circular needle, CO 90 st. Join, being careful not to twist. Place marker for beg of rnd.

Rnds 1-5: K for rolled brim.

Rnds 6-10: *K1, p1, rep from * for ribbing.

Rnds 11-31: K color pattern.

Rnds 32-33: K.

Begin decrease for crown:

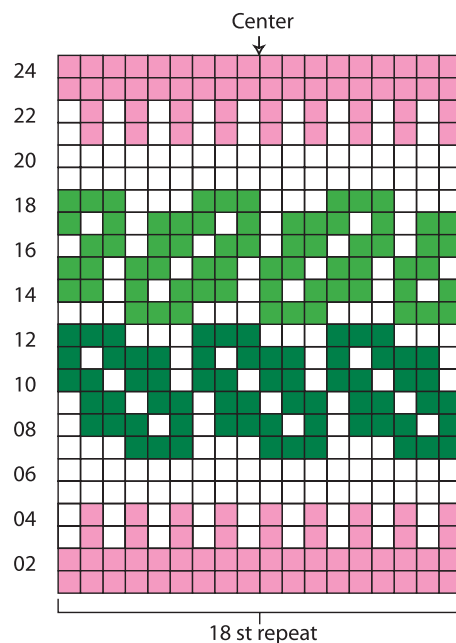
Rnd 1: *K 8, p2tog; repeat to end of rnd.

Rnds 2-3: K.

Rnd 4: *K7, p2tog; repeat to end of rnd.

Rnds 5-6: K.

Change to dps when necessary. Continue dec in this way until 9 sts remain. Cut yarn and pull through remaining sts with crochet hook. Chain 17 with hook and then sl st in second ch from hook and in each ch st back to hat. Sl st into top of hat. Make tassel and attach to end of chain loop.



Join us now (prices are in US\$)

1 Year, 4 issues of *INKnitters* for \$20.00
Canada - \$23USD

2 Years, 8 issues of *INKnitters* for \$38.00
Canada - \$43USD

Please start my subscription with the below issue (Circle One)

Fall Winter Spring Summer

We talk about knitting like no other magazine.

When technical skill matters, we make it the emphasis of each issue with our detailed articles.

Yarn Sample Program - actually feel the gorgeous yarns from one of the patterns inside every issue. Unique to INKnitters.

Name _____

Address _____

City/State _____

Zip Code _____

Visa Mastercard Discover American Express

Acct# _____ Exp. _____

Call
1-800-628-8047

www.inknitters.com

Fiber Circle Publishing
1105 E. Plano Parkway, Suite #2
Plano, Tx USA 75074

15 INKNITTERS FALL 2004 Supplement