

BULLETIN

Pasadena & Foothill AIA

July 2004

Vol. LVIII No. 7

FIRST FRIDAY FORUM Design Build Advocate Rebekah Gladson, AIA, AUA

By: J. Guadalupe Flores, AIA

In ancient times the master builder was the chief architect, engineer and builder. He was responsible for design, commanding skilled craftsmen and determining construction means and methods. All aspects of the project were under his control. Many of the great structures were built under the direction of a master builder. At some point in time, this was supplanted by the now "traditional" design-bid-build system. It served the architects well. More recently, the Design-Build Institute of America has stated that the master builder's approach to building is experiencing a resurgence. The design-build advocates promise to effectively deliver design and construction services with a single entity that has complete accountability for both design and construction. An increase in the use of this method and California's recent legislation would certainly be an indication that this may be the case. Therefore, is design-build synonymous with master builder?

July's First Friday Forum will feature Rebekah Gladson, AIA, AUA. Ms. Gladson will present an introduction to the design-build project delivery system, outlining key points such as basic responsibilities, quality, schedule and cost, capabilities required of all primary parties and the selection process. She will compare the design-build process and the "traditional" design-bid-build project delivery system and will illustrate who is suited to use design-build. Ms. Gladson also will describe



Rebekah Gladson
AIA, AUA

the benefits of the design-build process, some which include single entity responsibility, cost savings, timesavings and improved risk management. Most importantly, she will outline the benefits she sees to architects and the profession.

An Associate Vice Chancellor and Campus Architect for the University of California Irvine, Rebekah Gladson oversees the design, construction, inspection, and contracting for major capital projects at both the Irvine campus and UCI Medical Center. She is an active advocate of design-build and UCI is known in the industry for its alternative delivery of projects. Under her leadership of Design & Construction Services, UCI has received many national and regional awards for design excellence. She frequently lec-

Continued on page 5

SUMMER SOCIAL Audubon Center at Debs Park

By: Robert Perkins, AIA

Mark your calendars for the event of the summer when the Chapter's annual Summer Social bash moves to an exciting new venue on Saturday, July 17, from 4:00 to 8:00 pm. Long known for fine food, fun, and fellowship, this year's Social will introduce members to one of Los Angeles' hidden gems - Debs Park, and one of the nation's most acclaimed Green buildings - the Los Angeles Audubon Center.

Hidden just off the Pasadena Freeway, the sylvan expanses of the Audubon Center provide the perfect setting for a delightful summer evening get-together. Soothing sounds will accompany guests as they feast on an old-fashioned barbeque dinner, with the ultimate in retro-chic refreshments provided by the Soda Pop Shop of Highland Park. Continuing a long tradition, the Summer Social is the perfect evening for members, new and old, friends, spouses, and members of the community to come together in a relaxed and festive atmosphere. The evening is also an opportunity to recognize the promise of the next generation of architects, with the presentation of the Jean Roth Driskel Scholarship to a deserving Community College student of architecture.

A new headliner brings special excitement this year - the venue itself. Completed in November 2003, the Audubon Center at Debs Park has appeared in numerous national publications and received the 2004 Excellence in Design Award from Environmental Design and Construction magazine. Operating 'off the grid' with a full



Continued on page 9

INSIDE THIS ISSUE

First Friday Forum: Rebekah Gladson, Design Build	1
Summer Social	1
Board Meeting Minutes	2
President's Message	3
Voluntary Firm Contributions	3
New Members	4
June First Friday Forum Recap, IDP 4	
Help Save the Smith & Williams 2004 "Out of the Box" Design Awards	5 6
Chapter Program Recap: California Delta	8
Chapter Member Directory	8
Building Tour APU West Campus	10
1414 Fair Oaks Building Update	10
Chapter Events	12

FIRST FRIDAY FORUM Design Build Advocate Rebekah Gladson, AIA, AUA

Date	Friday July 9, 2004
Time	7:30 AM
Place	Brookside Country Club
Cost	Includes breakfast: Members: \$15 with RSVP Members: \$18 at the door Non-Members: \$18 with RSVP Non-Members: \$20 at the door Students: \$10 Annual Prepaid: Call Chapter Office RSVP: Diana Barnwell Wednesday, July 7

SPECIAL - SUMMER SOCIAL

Date:	Saturday, July 17, 2004 4:00 - 8:00 pm
Place:	Audubon Center at Debs Park 4700 North Griffin Avenue Los Angeles, CA 90031
Cost:	Members/Public \$25 Students w/ID: \$15
RSVP:	Diana Barnwell, before Monday, July 12

Pasadena & Foothill AIA

A Chapter of the American Institute of Architects
<http://aiapf.org>

EXECUTIVE COMMITTEE

President: John Miller, AIA
323-254-9200
john_m@tdmarch.com

Vice President: Richard Bliven, AIA
626-568-1428
rbliven@gonzalezgoodale.com

Treasurer: Barton Anderson, AIA
626-535-0500
banderson@hmcarchitects.com

Secretary: Veronica Romero West, AIA
626-351-4301
vwest@lcdg.com

BOARD OF DIRECTORS

Government Relations: J Guadalupe Flores, AIA
626-449.6787
gflores@fewelling-moody.com

Monthly Programs: Joey Kragelund, AIA
626.535.0500
jkragelund@hmcarchitects.com

Communications: Robert Perkins, AIA
909-594-5611
rperkins1@altrionet.com

Member Services: W. Pedro Newbern, AIA
626-449-6787
pnewbern@fewelling-moody.com

Associates Services: Edward Einem, Assoc. AIA
626-449-6787
eeinem@fewelling-moody.com

AIACC Director/Past Pres: Fred Wesley, AIA
626-432-5000
fred@pbws.com

AIACC Director: Ara Zenobians, AIA
626.449.6787
azenobians@fewelling-moody.com

EXECUTIVE DIRECTOR

Diana Barnwell, Hon. P&FAIA
626-796-7601
director@aiapf.org

The Bulletin is published monthly (except for August) by the Pasadena & Foothill Chapter of the American Institute of Architects. Articles, letters to the editor and commentary are encouraged and welcomed. Submittal deadline is the 10th of the month for the following month. For additional information or to submit, contact Diana Barnwell at the Chapter office at 626-796-7601 or director@aiapf.org.

Editor: Diana Barnwell
Production: Robert Perkins &, Suzanne Ali

Contributing writers:
Robert Perkins, AIA
Diana Barnwell, Hon. AIA
J. Guadalupe Flores, AIA
James Vitale, AIA
John Miller, AIA
Glen Duncan

PASADENA FOOTHILL CHAPTER AMERICAN INSTITUTE OF ARCHITECTS MEETING MINUTES, BOARD OF DIRECTORS

May 19, 2004 as revised June 16, 2004

Present:

John Miller, AIA, President
Richard Bliven, AIA Vice President, President Elect
Veronica West, AIA, Secretary
Barton Anderson, AIA, Treasurer
Edward Einem, Assoc. AIA, Associates Services Director
J. Guadalupe Flores, AIA, Governmental Affairs Director
Robert Perkins, AIA, Communications Director
Pedro Newbern, AIA, 2004 Membership Services Director
Fred Wesley, AIA, Past President & AIACC Director
Joe Kragelund, AIA, 2004 Programs Director
Diana Barnwell, Hon. P&F AIA, Executive Director

DISTRIBUTION:

Those Present
Ara Zenobians, AIA, Past President & AIACC Director

1.0 Call to Order: 4:45 PM by President, John Miller

2.0 Additions & Deletions to the Agenda: None

3.0 Board Minutes: M/S/P that: the April 21, 2004 Board Meeting Minutes were approved.

4.0 Executive Director's Report: Diana reported that the Chapter Member Roster was with the printer, Reliable Graphic, and she expects a proof by Friday or first part of the next week. She thanked Guad Flores and his wife, Katherine for their creative and technical efforts on the format.

5.0 Treasurer's Report: Barton Anderson distributed a revised Chapter 2004 Budget that showed a net loss at the end of the year of \$3,493. He explained that even with this deficit, all areas of projected income had to be achieved. He also said that the previous draft budget had been in error in respect to the funds needed for subscriptions for LA Architect for Chapter members. It was short by about \$3,493. More than achieving a balanced budget, Barton said that we should be striving for a budget surplus of about \$20,000 for a good comfort level. He explained that this budget needs to be brought into balance and sees no margin for error as the dues and other anticipated revenues just meet operational expenses. LA Architect was seen to be the only possible area for cutting the expenses and various means for dealing with this were discussed including eliminating it completely, requesting a postponement or partial payment plan or moving the payment into next year. There was general discussion about the more modest expectations for Design Awards income this year and the fact that the Chapter's income now is about \$8,000 lower than at this same time last year. Sponsorship bears a major burden of producing income and each Board member bears a responsibility for producing some of that income. Barton proposed that each Board member needs to assume the responsibility of bringing in \$1,000 in any combination of sponsorship types and that it all needs to be coordinated with Richard Bliven. Richard added that he has yet to receive any sponsorship plan from Design Awards. M/S/P that: the 5-18-04 Draft 2004 Chapter Budget be approved with the removal of all funds for LA Architect until the Chapter can again fund it.

(SUBSEQUENT BOARD ACTION: At the June 16, 2004 Board meeting, there was discussion of the approved motion regarding LA Architect in item 5.0 in the May 19, 2004 Board Meeting Minutes in re. the fact that while the motion was correctly recorded, the actual intent of the motion had not been fully understood by

several Board members and there was a wish by all but one Board member to rescind that motion and take another course of action. M/S/P that: the May 19, 2004 Board Meeting Minutes be approved with a parenthetical addition following the motion in 5.0 reading: "The subscription to LA Architect for eligible Chapter members will be continued through the end of 2004 for which payment will be made when billed. Late in this year, 2004, the continuance of the subscription into 2005 will be looked at in terms of the Chapter's then present and projected financial position.")

\$15,000 will be deposited from the checking account into a six-month, upgradeable CD at Fremont Investment & Loan where a one-time 50% withdrawal is allowed over the term of the CD and where deposits may be made at any time. When our existing 3-month CD matures in July that will be rolled over into the newer one. The \$15,000 being deposited is that which was withdrawn from the existing CD in October 2003 when possible shortfalls were expected.

6.0 Directors'/Committee Chair/Special Reports:

6.1 Programs/Monthly Meetings: Joe Kragelund recognized Barton for the very successful World Trade Center Forensic event at Cal Tech and remarked on the number of Chapter events being held this month. He said that the evening's sponsor had requested to postpone and that they are discussing rescheduling. The June sponsor is probably SC Edison and Joe is coordinating with Maris Peika so as not to conflict with their sponsorship of Design Awards. The Summer Social is being planned at the Audubon Center at Debs Park in Los Angeles.

6.2 Government Relations: Guad Flores has a Design Build program for the July First Friday Forum, Rail-volution for September and possibly a representative from the California Architects Board for sometime in the Fall.

6.3 Communications: Bulletin & Web: Bob Perkins reported that requests for the Constant Contact e-mails are up. He distributed information describing how it works and discussed the logistics and the importance of including images. He also requested more images for the Bulletin.

6.4 Member Services: Pedro Newbern expressed his pleasure at the status of the member Roster. He described his efforts and plans for the May 22nd IDP Forum at Woodbury University. He had distributed a flyer and used the Constant Contact to announce the event and has, as of this date, only 5 RSVPs. Woodbury University, which is co-sponsoring the event, is preparing a breakfast for 25 attendees. He went on to express his disappointment with a pattern of low and decreasing turnout for Chapter events. He cited the WTC event at Cal Tech as the most recent example. He said that this Chapter needs to be pro-active and set examples for the profession and the delivery of services as well as participation in at least our own programs. In respect to IDP, he said that this is an issue that is going to impact firm principals and that he still has hopes that this first event will be able to kick off a year-long dialog on the topic. It needs to be a continuing effort combined with mentorship.

6.5 Associates Services: Ed Einem reported that the ARE seminars continue to be well attended. However, the new 3.0 tests are quite different from the prior ones and he has learned that what we now have in our library is out-dated. We need to buy the newer materials. The cost will be considerable and cannot be done now. Diana asked Ed to come into the office to review all the ARE materials to determine what can be discarded. Ed said he also wants to organize another Associates special event – possible a photo contest in the Fall.

6.6 Jean Roth Driskel: Veronica West confirmed the six students from three schools for the Community College interviews on May 28th and June 4th.



PRESIDENT'S MESSAGE

by John Miller, AIA

When I Knew I Would Become An Architect

When was it that you determined what your profession would be? Do you remember the date or year, the circumstances, the place? What event moved you to that final decision? For some it might have been a slow progression, for others an instant of vision or the discovery of talents that were nurtured by a mentor, friend or parent. Frank Lloyd Wright knew from his very earliest beginnings what he would do in life. With the help of an energetic and forceful mother who placed pictures of buildings in his nursery and introduced him to the classic Froebel blocks early on, his career path was set. To me, taking the path to become an architect started early, but the road was not short or straight, nor without detours and parts of it missing.

In my formative period, my personal interests spurred me on toward a creative path. I had an early interest in all kinds of toy blocks, including a keen love of stone blocks (German stone blocks). Later in junior high and high school, I was fascinated by sculpture. At college, I continued in the creative fields as an Art and Business major, but had no opportunity to attend a school of Architecture. After College there was Viet Nam, Naval Aviation and, four years later, the GI bill and Cal Poly Pomona. At Cal Poly, I finally got into Architecture and, after three more years of college, I finally had a degree in Architecture and the beginning of a profession. But the moment I knew what I wanted to do in life was as a 14-year-old in St. Louis. So the future schooling, the California Architectural Registration Exams, the orals, the apprenticeship, all was determined by that date over forty years ago.

When I was 14, my parents decided our ancient kitchen needed a change. As a result of this momentous decision I became the proud recipient of the cabinet face of the old kitchen sink. Being a reasonably inventive youth, these raw materials were soon to become the cornerstone of my suburban clubhouse.

This was my first experience with indigenous architecture and the process still holds a special place in my heart. From this kitchen cabinet façade I created my main entrance. Thereafter I added onto it whenever materials

became available. Chartre was begun. Maybe not with a rose window, nor a grand nave, but to me, more than a foundation had been set. The materials I had to use were rarely new. I became expert at straightening used nails and hammering with caution to avoid re-bending them. As the backyard filled with my project, the neighbors began to notice and as is usual with great architecture, I had to defend my designs against the ignorant and unsophisticated. "Say kid, that thing looks like a good wind would knock it over." Or "Carson can't play in your yard with that thing." I remember challenging one father to come over and see if he could knock the fortress over. He obliged and was unsuccessful at budging it.

When I was done, my masterpiece was four stories tall and boasted electrical power (occasionally), eight rooms, dormer windows, four trap doors, a tower, a periscope and wall-to-wall carpeting. Granted, Dopey or Sneezzy would have had to bend over double to get in, but it was solid and, I might add, no kid ever needed a tetanus shot or cast during my first structure's short existence.

I will admit that during construction I did have one minor incident, which very nearly ended the project. It began when I decided a new element was necessary. Up to this time there was no real vertical interest architecturally. I was determined to rectify this with the addition of a tower with a penthouse. In those days when building off the ground, the use of scaffolding was a gross misuse of raw materials and would entail the consumption of at least a day's supply of straightened nails. Errors and omissions was not an issue to the profession then so we did without the unnecessary. Well, one Saturday morning as I was framing the gable atop my tower, I got an education in safety. The outline of the rafters was just toenailed in place when I stepped back onto a plank to admire the skyline. Unfortunately the plank was not secured at the end that made a difference, and I was unceremoniously ejected from the construction site along with most of the roof framing. The event was chronicled by a neighbor who said that I disappeared over the side of the tower, with the roof in close formation, and with such swiftness that he assumed we had been launched by a catapult. Fortunately, I was able to snag a more secure wood member on the way down and was still hanging from it when he arrived breathless at the scene. After dropping the remaining two feet to the ground, I asked why he was carrying a first aid kit. His concern was sincere, but I assured him that I was fine and that I had not hit my head again. In fact I had only a few minor abrasions and was able to renew the work within an hour. This incident did not end my career; rather it cemented in me the desire to build more. I still enjoy the smell of _awdust, and look forward to working with my hands. However, as a compromise on the side of caution, I have since always taken care to watch where I step on construction sites.

So what stories do you have to tell? Care to share them with us? ◀



VOLUNTARY FIRM CONTRIBUTIONS 2004

The Chapter wishes to thank these members and firms:

Platinum

D.S. Ewing Architects, Inc.
Gonzalez Goodale Architects
Haynes & Oakley Architects
HMC Architects

Gold

Patrick Sullivan Associates
TDM Architects, Inc.

Titanium

Dahl Architects

Individual / Small Firm

Buff, Smith & Hensman
Craig Hill
Frank O A Twerdy, AIA-E
Gilbert L. Hershberger, AIA, Architect
Heaton/Zartl & Associates
Joseph F. Thomas, FAIA-E
Juan Baires-Adair, AIA
Kimon Onuma, Onuma & Associates
Lee Kline-Kline Enterprises, Inc.
Leonard D. Kersey, AIA
Paul A. Burkhard, Jr., AIA-E
Raymond Ziegler, FAIA-E
SHP Project Development-Stacy H. Pray
Stan Westfall-The Westfall Company
William Watts-CKD Inc.

JUNE FIRST FRIDAY FORUM RECAP: IDP and Your Bottom Line

By: James V. Vitale, AIA, CSI

A full room greeted Tina Bauer, Assoc. AIA at this month's First Friday Program. Ms Bauer is a great example of the improving quality of graduates from our colleges and universities. Her dedication to the AIA is already evidenced by her past role as AIAS Chapter President at SLO and as a student director for the AIA California Council. Presently she is State IDP Coordinator for the AIACC, has passed the A.R.E. and will be sitting for her Supplemental Examination in September.

Many new faces were apparent, drawn by the critical nature of this month's topic. If you are not already aware, the California Architects Board (CAB) will require all licensure candidates after January 1, 2005 to complete the Intern Development Program (IDP) prior to initial licensure. CAB's introduction of IDP brings the state into concurrence with NCARB's structured internship program.

Initiation of a professional internship program for architects is not unusual, as doctors and engineers already have professional internships as requirements of their licensure. Interestingly, this is not a requirement of the legal profession.

The IDP program requires verification of completion of 5,600 hours of diversified experience in 16 specialty areas. A breakdown of the required hours in each area can be found on the CAB website. Verification, in the form of daily activity logs, is performed by in-office supervisors and out-of-office mentors. Mentors are typically

volunteer senior architects who confer with interns on a quarterly and as-needed basis; listening, guiding and motivating the intern. Supervisors are licensed architects from whom the interns directly receive direction.

Concerns of significance to principals are: What is the cost of record keeping and reporting to CAB? Will this lead to longer retention of employees? Will this increase or decrease competition for new graduates? Will this possibly reduce our E&O and can we possibly seek higher fees from public agencies to recapture our costs?

Having just returned from Chicago and this year's convention, I can attest to the observable improvement in content of workshops. In particular, related to IDP as well as for in-house training. The entire program of workshop presentations in oral and power point on CD is available for a single fee of \$495.00. This is indeed one of the most cost effective and value added membership benefits to be offered in many years. Entire staffs can benefit by viewing presentations over lunch and receiving pre-printed handouts.

IDP should be viewed by the public as a further reinforcement of the degree of education and experience required of licensed architects. In RFP's the number of staff IDP participants should be seen as a positive. Lastly, Principals should view IDP participants as long-term contributors to our profession.

If you require more information, IDP packets are available at the chapter office. The content of this month's First Friday Forum is a continuing indication of its dedication to providing programs of local and professional interest to our membership. Please invite your associates to join us. ◀



New Members

Mike H. F. Ho, AIA

AIA Component Affiliate

Kevin O'Brien, AIA, LEED
Carlos E. Chavez-Andonegui, AIA

Associate

Steve W. White

Mechanical, Electrical, Structural, & Civil Consulting Engineers

320 N. Halstead Street Suite 200 Pasadena CA 91107
Ph.: 626-351-8881 Fax: 626-351-3203



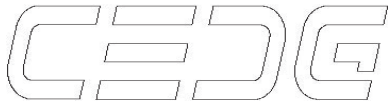
TMAD ENGINEERS
TAYLOR & GAINES
TMAD CIVIL

ONTARIO RIVERSIDE • PASADENA OAKLAND • ANAHEIM ENCINO • SAN DIEGO PHOENIX



TURPIN & RATTAN
ENGINEERING, INC.
CONSULTING ELECTRICAL ENGINEERS

ARA VARTANIANS, P.E.
VICE PRESIDENT
2441 HONDULU AVENUE, SUITE 200
MONTROSE, CA 91020
818 / 249 / 0444 818 / 249 / 1467 FAX
WWW.TURPINANDRATTAN.COM



CALIFORNIA ENGINEERING DESIGN GROUP, INC.
Consulting Engineers
Cirilo Gatilao
Principal

2725 West Burbank Blvd.
Burbank, CA 91505-2306
Tel: (818) 566-7755
Fax: (818) 566-7760
E-mail: engineer@cedginc.com



JCE STRUCTURAL ENGINEERING GROUP, INC.
STRUCTURAL & EARTHQUAKE ENGINEERING CONSULTANTS
234 E. Colorado Blvd., Suite M-110
Pasadena, CA 91101-2225
Tel: 626-585-1822
Fax: 626-585-1824
jceinfo@jcesegroup.com



PRUDENTIAL LTG.
1737 E. 22nd St.
P.O. Box 58736
Los Angeles, CA 90058-0736
Tel. 213. 746.0360
www.prulite.com



Lutron controls your light...
lighting controls and
shading solutions

Mark Gasper

phone: 818-848-8283

fax: 818-848-8285

email: mgasper@lutron.com

web: www.lutron.com



FIRST FRIDAY FORUM

Rebekah Gladson, Design-Build

Continued from page 1

tures on alternative construction delivery methods, managing the implementation of capital programs, and leadership and strategic problem solving and is active in many architectural associations.

Ms. Gladson holds a Masters of Architecture from California Polytechnic State University, San Luis Obispo, and certificates from the Institute for Executive Leadership and Management at Stanford University and the University of California Management Institute. ◀

Help Save the Smith & Williams 1414 Building!

As reported on page 10, the South Pasadena Preservation Foundation (SPPF) has generously agreed to pay for preparation of a National Register nomination to help assure long-term awareness of the importance and significance of Smith & Williams' Community Facilities Planners Building at 1414 Fair Oaks in South Pasadena. They will need financial assistance, however to continue and complete that commitment

The SPPF and AIA members who helped convince the South Pasadena City Council to designate it a local landmark are hoping there is enough enthusiasm and commitment among the architectural, design and preservation communities to form a "Friends of the Smith & Williams Building" support the Foundation in that endeavor and to help assure its continued preservation?

Those of you with fundraising ideas or skills or are interested in participating, please contact Laurie Barlow [\[barlowco@ix.netcom.com\]](mailto:barlowco@ix.netcom.com) or Glen Duncan at (323) 344-8430 [\[glduncan@earthlink.net\]](mailto:glduncan@earthlink.net) ◀

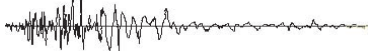


C.W. Driver
BUILDERS SINCE 1919

General Contracting • Construction Management • Design/Build

468 N. Rosemead Blvd.
Pasadena, Calif. 91107
www.cwdriver.com
626.351.8800 T
626.351.8880 F

**GROSSMAN & SPEER
ASSOCIATES, INC.**
STRUCTURAL ENGINEERS



529 Hahn Avenue, Suite 200
Glendale, CA 91203
(818) 507-1020 ♦ (818) 507-1556 Fax
engineers@grossmanspeer.com
www.grossmanspeer.com

BUDLONG & ASSOCIATES, INC.

MECHANICAL-ELECTRICAL ENGINEERS
PASADENA, CALIFORNIA

SHIELD ANDERSON
Office Manager
(626) 449-4188



WHEELER & GRAY
Pasadena, CA • Anaheim, CA

STRUCTURAL & CIVIL
CONSULTING ENGINEERING

(626) 432-5850 FAX (626) 432-5858
INTERNET: wheelerandgray.com

Providing structural
engineering services
since 1945

- Structural Engineering Design
- Consulting
- Earthquake Engineering
- Forensic



LOS ANGELES
NEWPORT BEACH

1660 West Third Street
Los Angeles, CA 90017
(213) 484-8950 • FAX (213) 483-5550
20301 S.W. Birch Street
Newport Beach, CA 92660
(949) 476-8319 • FAX (949) 955-0794
E-MAIL bj@bjase.com

JOHNSON & NIELSEN ASSOCIATES
CONSULTING STRUCTURAL ENGINEERS
911 S. Primrose Ave. • Suite D • Monrovia • CA • 91016-6516



Wen Y. Lin, S.E.
Project Director

(626) 256-6688
FAX (626) 256-6699
E-MAIL wlin@jnase.com

Los Angeles County • Riverside County • Orange County



E. Jessup & Associates
CONSULTING ENGINEERS

Ernie Jessup, PE
(818) 884-3997

19730 Ventura Blvd. Suite 17
Woodland Hills, CA 91364



**We Conquer
Challenges
With Creative
Options**

48 S. Chester Avenue • Pasadena, CA 91106
(626) 585-9680 office • (626) 585-9685 fax

www.msm1.com



This year's Awards Program builds on the "digital" foundation of the 2002 event and promises to be even more exciting and innovative. This year, payment for submittals can be made over the internet using PayPal, which will make the submittal process totally paperless.

As you may know, the 2002 event broke new ground by having all the submittals done digitally and over the internet. The result was that all who were interested were able to view the submittals as they were posted on the web site and return as often as they liked.

At the core of the Awards Program is the 3D gallery in which all entries are displayed. This Gallery is the vehicle used by all the entrants to upload their submittals. The public, the Jury and the AIA are able to use the Gallery to track all aspects of the Awards Program.

To see the still-active 2002 website go to www.webscape.com/AIAawards2002. This site has received over 100,000 hits since June 2002 with a peak of close to 18,000 in September 2002, the month of the Awards Program. The site continues to have around 2,000 hits each month to this date, two years later.

Visit this year's site at www.intellect.com/AIAawards2004.

We believe the Design Awards to be a program that develops and utilizes procedures that inform the evolving management and administration of the design process. It provides our members with an increased insight on how to understand new technologies and how these new technologies can be integrated into the architectural practice.

The lower fees for early submittal are offered to get the web site activated with as many submittals as possible early in the process. Pasadena & Foothill AIA Members will pay \$165 for submittals until July 19, 2004 and \$195 for submittals after that date. Members of other AIA Chapters will pay \$200 for submittals until July 19, 2004 and \$225 for submittals after that date.

Critical Dates:

July 19 Deadline early submittals (uploaded digital files to server)

August 9 Deadline for submittals (uploaded digital files to server)

August 28 Jury convenes for judging

August 30 Winners notified

September 17 Display boards submitted by winning firms
(OK, so it's not all paperless!)

Design Awards 2004: Out of the Box

The Jury

The Chapter is enormously fortunate to have a gifted jury of five this year, including Patricia Oliver, AIA; David Littlejohn, Hon. AIA; Mark Rios, FAIA, ASLA; Clive Wilkinson, AIA; and Scott Johnson, FAIA.

Mark Rios, FAIA, ASLA,

received both his Masters of Architecture and Masters of Landscape Architecture at Harvard University and a Bachelor of Science, Architecture at the University of Southern California.



As Principal-in-Charge, Mark Rios is responsible for the direction and operation of Rios Associates, Inc., which he founded in 1985. (The firm became Rios Clemente Hale studios in 2004.) Since the establishment of the firm, Mr. Rios has directed the design of new building construction, renovation, landscape architecture, interiors, graphics and product design. Project types for the firm include: corporate offices, child-care centers, parks, institutional and municipal projects, and residences. Mr. Rios provides overall leadership for a staff of 30 creative professionals. The diverse nature of the work, including architecture, landscape architecture, and graphic, interior and furniture design, represents his belief in the comprehensive and collaborative nature of design. He is committed to a creative environment, both for individuals and groups, in a team-oriented studio environment. He prefers to work with clients in that same creative process, to strive together to find what is unique in each project. It is Mr. Rios' belief that when the client participates as an active team member, the result is an integrated, inventive and appropriate solution.

Over the past 15 years, his firm has won numerous ASLA and AIA Awards, as well as being honored by the Los Angeles Business Council for a number of projects. Rios Associates worked with the L.A. Unified School District to build two new Primary Centers for which they won a National American Institute of Architects (AIA) Honor Award in 2003.

Rios' work has been extensively published in magazines, including Metropolitan Home, Architectural Record, Interior Design, and The Los Angeles Times Magazine. Additionally, Rios serves on the Board of Advisors of Los Angeles Forum for Architecture and Urban Design.

Patricia Oliver, AIA,

is Sr. Vice President of Architecture, Planning, and Special Projects, Art Center College of Design. Ms. Oliver was born and raised in Southern California and received her undergraduate degrees in Literature and Independent Studies from UCLA. She completed her studies at UCLA with a Master of Architecture degree, then worked for many notable Southern California architects including Frank O. Gehry, Charles Moore, Craig Hodgetts and Robert Mangurian at Studio Works, and Coy Howard. In 1981 Ms. Oliver opened her own office, Oliver Kurze Georges, in Los Angeles. While maintaining her practice she taught at California State Polytechnic University, Pomona and eventually became Associate Dean of the College of Environmental Design. In 1992, Ms. Oliver became the Chairman of a new department of Environmental Design at Art Center College of Design. In this position she has developed programs in Environmental Product Design, Interior Architecture, Environmental Graphics and Entertainment Design. At the Art Center College of Design, Ms Oliver works with design architects Frank O. Gehry, Alvaro Siza, Craig Hodgetts and Ming Fung of Hodgetts + Fung, and Kevin Daly of Daly, Genik. She is responsible for the planning, programming and management of the design projects for the 175-acre Hillside Campus, and the 7-acre South Campus in downtown Pasadena.

Ms. Oliver has served as President of the Architectural Foundation of Los Angeles, Treasurer of the National Association of Collegiate Schools of Architecture, and Associate Director of the Outreach Community Center for Urban Research. She has served on the Board of Directors for the InterAmerican Center for the Arts and Architecture, and on the Board of Directors of the American Institute of Architects, Los Angeles Chapter. She has been a visiting critic/lecturer at Harvard University, University of Southern California, Southern California Institute of Architecture, North Carolina State University and Milan Polytechnic in Italy. She is a registered architect in California.



David Littlejohn, Hon. AIA,

is a nationally and internationally recognized author, essayist, critic, lecturer and teacher on our cultural environment.

Born San Francisco, he received his BA at the University of California, Berkeley in Architecture/English going on to Harvard University where he earned his PhD in English. He was a Fulbright Professor, University of Montpellier, France, and a critic, on KQED-TV, San Francisco, and Public Broadcasting "Critic at Large," in the 1970s with 238 broadcasts.

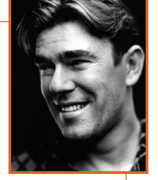
His extensive writings feature keen observations on architecture as it both reflects and impacts our society. He is the author of 13 books, including three on architecture; over 350 articles and reviews as cultural correspondent for the London Times, Wall Street Journal, public television; and 27 articles on architecture in AIA journals, the Atlantic Monthly and Oxford Press, all while a professor of Journalism, now emeritus, at the University of California, Berkeley.



Clive Wilkinson, AIA,

President of Clive Wilkinson Architects, was born in South Africa in 1954. He was educated in England and South Africa, and studied under Peter Cook and Ron Herron of Archigram, Rem Koolhaas and Zaha Hadid at the prestigious Architectural Association in London. In 1984 he became a member of the Royal Institute of British Architects and in 1992 a member of the American Institute of Architects. After graduating he worked for Farrell & Company for eight years, achieving first Associate, and later Design Director, positions in the practice. At the time of leaving England he was Design Director on the largest single office development in the City of London, the \$250m Alban Gate development, and was featured on the BBC news.

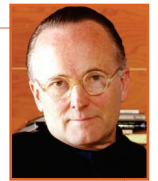
After a background in several highly publicized creative building and interior design projects in Europe, Africa and Australia, including a year working for Frank Gehry, he established his design practice in Los Angeles in 1991. After completing TBWA/Chiat/Day's 'Advertising City' headquarters in 1998, several major companies commissioned the practice for creative projects across the U.S. and in Europe. To date the firm has received twenty major design awards, with work published in numerous design books and magazines internationally, as well as television and radio coverage. Among his selected Honors: State and National AIA awards; Neocon Gold Award 1999; Chicago Athenaeum Award; Interiors Design Awards for Best Large Office, 2000, and Best Educational Facility 2003.



Scott Johnson, FAIA,

is a highly regarded architect in Los Angeles, well known to the general public and the design profession alike. A designer of residential, commercial and institutional building projects, a number of his designs have been widely published and become local landmarks. Born in California and educated at Stanford University, the University of California at Berkeley (AB in Architecture) and Harvard's Graduate School of Design (Master in Architecture), Johnson worked variously at The Architects Collaborative in Cambridge, Mass, the Los Angeles and San Francisco offices of Skidmore Owings Merrill and the office of Philip Johnson and John Burgee in New York City. During his tenure there, Scott Johnson also served as Assistant to Arthur Drexler in curating the "Three Buildings" exhibition at the Museum of Modern Art in New York (1981).

Johnson joined Pereira Associates in Los Angeles in 1983 as Principal and Design Director. He and William Fain acquired the firm, now known as Johnson Fain, in 1987. In addition to designing nearly 100 built projects in the past 16 years, Johnson has also taught at the Southern California Institute of Architecture, the USC School of Architecture, and the UCLA School of Art and Architecture. Active in the arts community, he is a Founder of the Museum of Contemporary Art in Los Angeles and serves on the board of directors of the Collage Dance Theater, the Craft and Folk Art Museum, and is a member of MOCA's Drawings Committee.



Chapter Program Recap: California Delta; The King of Machines and the Five of Toys

By: Diana Barnwell

Small in stature but large in passion, knowledge and vision, landscape architect, author and educator, Jane Wolff, held the rapt attention of some 30 or more members and guests at the June Chapter program and book signing.

The California Delta and her book about it, "*Delta Primer, a field guide to the California Delta*," turned out to be a most timely topic as a result of the recent break of one of the old dirt levees on the Delta on June 3rd. The break caused \$35 million in flood damage, the evacuation of more than 300 people and is estimated to cost in excess of \$36 million to repair.

But, why was this news down here in Southern California? This levee is one of about 6,000 miles of levees in the State and many of them are old. The concern is that if a major levee should fail, salt water from the San Francisco Bay could pour into the freshwater Delta and severely compromise not only agricultural land but also a major source of drinking water.

Added to this is the recent report from the U. S. Geological Survey, predicting that the drought in the West could be the worst in 500 years

Ms. Wolff spoke of the dynamics of the frequently contradictory demands and expectations of the Delta area. She talked about some of the unlikely alliances forged with the necessary negotiated solutions to these conflicting demands. And, most importantly, spoke about how the future of this area depends on an educated, informed State population; how conventional planning paradigms do not apply and how the various consequences of the difficult decisions would likely play out. But, how to do this? How do you start the thinking? How do you engage this population?

Wolff suggested that the way we (as designers) imagine and describe a site, a place, and a geography can help inform future action. This imagery and descriptive process, she believes, can help get people engaged in the conversation and the process. She told how she started by gathering stories from a wide range of perspectives and soon found that among the tangle of

COMING TO YOUR MAIL BOX THIS MONTH: The Chapter Member Directory (And More)

By: Diana Barnwell

Very shortly and at long last, Chapter members will receive a mailing containing, among other things, a Roster of all the present Chapter Members.

The Roster information is the most current we are able to provide. But, it goes without saying, even as I write this, one or more of you out there is changing jobs, moving, getting a new e-mail address... you get the idea; you're moving targets. Therefore, we ask that you notify the Chapter office with any changes you wish to be made on any of your contact or other information and we will update our records.

Also included with this mailing will be:

issues and the range of questions, a certain pattern emerged. In spite of the many different perspectives as well as cultural expectations and differences, four categories of need, demand and/or expectations emerged: the Delta as Machine, as Landscape or Garden, as Wilderness and as Toy. These became the structure for the story and a metaphor for the negotiations. And, the book and related deck of playing cards are organized around this concept. Inspired by an actual deck of English playing cards from the 1700s displaying maps and her feeling that the map is the lowest common denominator of space description.

Within the 52-card deck with the four suits and standard ranked cards, the King of Machines is probably the most important card in the deck; it represents domestic use and will "rule" over an additional 50,000,000 people who will be in California in the next 20 years.

So, consider the 5 of Toys (recreational use) vs. the 4 of Gardens and think about the enormous conversion of farmland to private, suburban gardens. How about the Jack of Wilderness v. the King of Machines?

Consider water! And, join the conversation. It's an important one.

The book is "*Delta Primer, a field guide to the California Delta*" published by William Stout, San Francisco. ◀

- A questionnaire about the AIA & this Chapter, requesting your evaluation of membership benefits: both positive and negative. This will also be sent to you in the form of an e-mail similar to the Chapter events announcements. Please take the time to respond to the questionnaire. We know you're busy but in order for us to make the Chapter responsive to your needs, we need to know what those needs are.
- This questionnaire will also ask whether you prefer the monthly Chapter Bulletin to be sent to you by regular mail as it is now or to have it e-mailed.
- The Member Firm Matrix. This is the means by which we respond to requests for architect referrals and inquiries about member firms and their specialties. Please review your name, contact information and areas of practice and return any corrections or additions to the Chapter office. A member firm is one that has at least one firm Principal as a member of this chapter.
- Information on how to add or update your firm information for online access.
- A list and description of Chapter Committees and their Chairs. We invite you to consider joining your colleagues and us in these efforts. Help plot the course of your chapter along with its leadership and Board.

These items are tools and means by which we believe your membership in the AIA can be enhanced. Please know that any additional thoughts and ideas in these matters are always welcome.

We know that the AIACC recently solicited similar information from California AIA members and you may have responded to that. However, this requested information can more immediately affect your benefits at the local Chapter level and help us advocate better for you on issues with the State and National level of your membership.

If you have any questions or comments on any of the above, please contact me, Diana Barnwell, at the Chapter office at 626-796-7601 or director@aiapf.org.

Thanks for helping us better help you!

SUMMER SOCIAL-Audubon Center at Debs Park

Continued from Page 1

range of renewable technologies, the Center has attained a Platinum designation, the highest rating in the US Green Building Council LEED system. Attendees will get an inside look at the building and technology led by design team member Ms. Kim Hosken, from CTG Energetics.

The story of the Audubon Center is a perfect fit for our Social - renewal, rediscovery, looking forward. Almost unknown outside its own neighborhood, Debs Regional Park, named for former L.A. County Supervisor Ernest Debs, is a success story of benign neglect. With few manicured lawns and frankly rough around the edges, the rolling hills of the near 300-acre



park preserve some of the last natural arroyo woodlands in Southern California. With a prime natural habitat and proximity to thousands of school



children and their families, the park proved an ideal site for the Audubon Society to construct an urban outdoor environmental education center.

Groundbreaking for the Center occurred October 25, 2002, aided by \$350,000 in federal funds. Designed by EHDD architects, the Center's 5,268 square feet contain classrooms,



interpretive displays, and administrative offices. A virtual 'how-to' in sustainability, the building integrates landscape, architecture, mechanical, and construction technologies seamlessly. The design is based around passive energy-conserving strategies, minimizing demands for artificial lighting, heating, and cooling.

All power for the center is collected via solar panels, and water use is minimized through native plantings and high-efficiency toilets. All wastewater is treated and retained on site, and stormwater is treated and collected in detention basins. In addition, over 97% of construction waste was either recycled or reused on site. For more information on this fascinating project, see www.audubon-ca.org.

Come help us make this year's Social the best ever. Tickets are \$25 (\$15 students with ID), and include the building tour and dinner. RSVPs are required to the Chapter Office www.aiapf.org or 626-796-7601 by July 12.

See you there!



The American Institute of Architects
AIA Pasadena & Foothill

The Chapter Thanks our 2004 CORPORATE SPONSORS

Patron

Integrated Design Services, Inc.

Friend

Brandow & Johnston Associates
Collins, Collins, Muir & Stewart
C.W. Driver
Pacific Engineers Group
Prudential Lighting
Turpin & Rattan Engineering, Inc.
Wheeler & Gray, Inc.

Pacific Engineers Group

Consulting Electrical Engineers
11028 Victory Boulevard
Suite 201

North Hollywood, CA 91606
213-877-5304
818-763-9189

**Think protection.
Think of us.**



**Dealey, Renton
& Associates**

Insurance Brokers

Oakland Pasadena Santa Ana

199 S. Los Robles, Suite 540
Pasadena, California 91101

Tel 626.844.3070

Fax 626.844.3074

www.dealeyrenton.com

License #0020739

**PPiB E & O
Specialists**
a Hills, Rogal and
Hamilton Company
LIC. 0641361

Since 1982
**PROFESSIONAL PRACTICE
INSURANCE BROKERS, INC.**

All Lines Of Insurance

PH: 800.705.7442

FX: 949.729.0770

ppib.social@ppib.hrh.com

<http://ppib.hrh.com>



COMMERCIAL KITCHEN DESIGN

CONSULTANTS AND DESIGNERS OF COMMERCIAL KITCHENS

William J. Watts

624 Starlight Crest Drive
La Cañada-Flintridge, CA 91011
(818) 790-8494 • (818) 952-8025 Fax
1532 Powder Court, Eagle, ID 83616
(208) 939-1376 • (208) 939-5965 Fax
E-mail • commkitchen@ckd-design.com

INTEGRATED
MARKETING
CONCEPTS, INC.

ARCHITECTURAL BUILDING PRODUCTS



(909) 392-5500 FAX (909) 392-2383
2079 WRIGHT AVE., UNIT B2 • LA VERNE, CA 91750
e-mail: buzz@imc-ca.com web site: www.imc-ca.com

**COLLINS
COLLINS
MUIR &
STEWART** LLP

Samuel J. Muir
Attorney at Law

1100 El Centro Street
South Pasadena, CA 91030
T (626) 243-1100
F (626) 243-1111
smuir@ccmslaw.com

Newport Beach (949) 718-4800
Las Vegas (702) 384-1600

June Board Minutes

Continued from page 2

- 6.7 Fellowship: John Miller reported that the committee will recommend the names for nomination to the Board in June.
- 6.8 Golf Tournament: Joe Kragelund reported that the next planning meeting is in about a week and a half
- 6.9 Sponsorship: Richard Bliven reviewed the updated and previously e-mailed chart that reflects the history of participating sponsors by their amount and renewal date. He identified several that are targeted for current renewal. It is important that the contacts and re-contacts are made by those e Board members who have a relationship with the sponsors. Barton proposed that one or more who know a sponsor, take him to lunch or breakfast. It was remarked that there has been some change in leadership at some of the long-time sponsor firms. It was planned that Richard and Fred approach C.W. Driver as well as Bernard Brothers. Collins, Collins Muir & Stewart and Prudential are important sponsors that should be contacted soon. And, coordination with Design Awards must be made. It was remarked that the \$5,000 Installation sponsorship in the Budget be looked at in combination with the sponsorship line item (585).
- 6.10 Design Awards: In the absence of Maris Peika, Diana reported that the committee's weekly meetings continue. The website went live today. The five jurors have been selected and have accepted. Maris is planning on a member firm-hosted Jury dinner. Sponsorship is a crucial effort that has yet to be started and coordinated with Richard Bliven, as Sponsor Program Chair. John Miller indicated that he would attend the next committee meeting.

- 7.0 Old Business
- 7.1 WTC Collapse Forensic Study Presentation at Cal Tech: Barton Anderson reported that there were about 204 people in attendance and that it was well received. The Chapter could not charge for the event due to Cal Tech policies. It was again remarked how few Chapter members attended and that of those who had RSVPd – Chapter and otherwise – a significant number were no-shows.

- 8.0 New Business
- 8.1 AIA National Convention
John has the 21 delegate cards. It was remarked that the voting procedures perpetuated the Old Boys' Club mode of operating in that it is not individuals in the AIA membership who can vote but only those who can afford the Convention attendance. It is not clear that these reliably represent the wider membership.
- 8.2 2003 Internal Chapter Audit: Richard Bliven requested that Pedro Newbern and Fred Wesley participate in the 2003 Internal Chapter Audit after the taxes have been filed. They accepted. Diana Barnwell and Barton Anderson will also participate.

The meeting was adjourned at 6:25 PM.
Diana Barnwell, Executive Director

BUILDING TOUR: Azusa Pacific Univ. West Campus Inland CA Chapter is Joint Host

Pasadena & Foothill and Inland California Chapters of AIA will jointly host a tour of the west campus of APU Wednesday evening, July 21st. Since 1999, HMC Architects, Winston Ko Architects and Coleman-Caskey Architects have designed projects to accommodate the rapid growth of APU. Here is an opportunity to hear from those designers and teams responsible for this place that has been used for television commercial spots and movie backdrops.

The west campus features three major facilities in this first phase of construction. The Darling Library, the Duke Center and the Felix Event Center will feature tours led by their respective designers, builders and client.

Contact the Inland California Chapter at (909) 799-7213 to make reservations for this event. LU units will be available.

5:30 – 6:00PM	Reception
6:00 – 7:00PM	Guided Building Tours
7:00 – 8:00PM	Dinner Buffet/Presentation
Members, Guests	\$15 / \$20 w/o RSVP
Associate Members	\$12 / \$15 w/o RSVP
Student Members	\$12 / \$15 w/o RSVP
Non-Members	\$20 / \$20 w/o RSVP

Smith & Williams and the Fate of the 1414 Fair Oaks Building

The Los Angeles Conservancy Modern Committee, the South Pasadena Preservation Foundation and the South Pasadena Cultural Heritage Commission have forged a substantive coalition with the participation of many of our members in helping to preserve the distinctive Smith & Williams designed office structure at 1414 Fair Oaks Avenue in South Pasadena. It is a significant and historic property and a prominent element in the urban history and fabric of South Pasadena and the region.

It is additionally of major significance to the Pasadena & Foothill Chapter, AIA, in that Whitney R. Smith FAIA, a Principal of the firm of Smith and Williams, a long-time resident and businessman in South Pasadena, was the designer and developer along with his partner Wayne R. Williams, FAIA. This structure was built by a local contractor, Ted Tyler, to be the business home for an amazing collaborative of individual practices around an open garden under a steel canopy that provided an inviting space for interaction, communication and



J & S
CONSULTING
ENGINEERS, INC.

ELECTRICAL + MECHANICAL + FIRE PROTECTION

Schools ♦ Commercial ♦ Industrial ♦ Medical Facilities
HVAC ♦ Plumbing ♦ Fire Protection Systems
Lighting Design ♦ Power Systems ♦ Fire Alarm ♦ Communications Systems

Nam Jabbour - Principal

502 S. VERDUGO DR., SUITE 200, BURBANK, CA 91502

TEL 818-841-0303 · FAX 818-841-8531 · www.jandsconsulting.com

jba ARCHITECTURAL
PRESENTATION
182 South Raymond Ave. Pasadena CA. 91105 (626)405-1598



www.jbullock.com

relaxation. The Smith & Williams Building won many awards for its design that clearly follows its function in a way that expresses its spirit in a delightful, airy and open attitude, incorporating a garden with a definitive Asian influence. This is in contrast to many other designs of that era that were massive, enclosed, bulky concrete modern structures.

This building embodies the design culture of the early modern era, and many of the designers and professionals who collaborated with Smith and Williams' "Community Facilities Planners" are major influences in contemporary design. They include Robert Meyerhof, Phillip Patterson, Stuart Denker, Simon Eisner, Garrett Eckbo, A. Quincy Jones, Victor Gruen and Associates, Kariotis and Kesler, Edgardo Contini and Joseph Amestoy. Numerous other successful professionals have credited this firm with a strong start to their careers, and many of them are local designers in active practice.



Whitney Smith was one of the inaugural members of this Chapter, breaking away with other members in 1948 from the Southern California AIA to form the Pasadena Chapter. Many of our members have worked for him or his firm, learning first-hand the values of strong planning, delight in form, and professional expertise carried out in novel solutions.

The following update on threatened demolition is provided by Glen Duncan, President of the South Pasadena Preservation Foundation and member of the city's Cultural Heritage Commission. Glen and Chapter member Laurie Barlow, AIA, worked together on the Chapter's 1414 Legacy Committee, formed particularly to work for the preservation of this building.

Preservation Update

The (shaky) good news, recently reported in the Pasadena Star News is that the South Pasadena Unified School District (SPUSD) might not have sufficient funds to purchase and adapt the Smith & Williams property for school use. Adapting the structures for school use is reportedly estimated to cost \$2.5 million. To their credit, the SPUSD had contracted with Michael Krakower to develop a structural engineering plan to bring the Smith & Williams structures into compliance with State Architect's safety standards for educational use. Michael had worked in the building as part of John Kariotis' staff. More recently, he has also won at least two preservation awards from the L A Conservancy, including one for South Pasadena's Oaklawn Bridge restoration project.

However, this is no time to celebrate. Storm clouds that give way to sunny skies often return as fast as they leave. The school district could find another pot of money or shift funds from another project. Yogi Berra's malaprop, "It ain't over til it's over!" may be the best advice at this point.

It's also worth noting that many feel that continued ownership by the Claretian Brotherhood is still a serious threat to appropriate maintenance and preservation of the 1414 property, even if its inclusion in the SPUSD project does fade into oblivion. The South Pasadena Preservation Foundation has included it on its recently established "Most Endangered" list (featured on the cover of the current newsletter) and it will stay on the most endangered list until a viable plan to preserve the property is assured.

The South Pasadena Preservation Foundation is paying for preparation of a National Register nomination (now underway) and is hoping some sort of fundraising event could be held to pick up at least a portion of the cost. Is there enough enthusiasm and commitment among the architectural, design and preservation communities to form a "Friends of the Smith & Williams Building" support the Foundation in that endeavor and to help assure its continued preservation?



We fervently hope so! Anyone interested in participating in this effort, please contact Glen Duncan at (323) 344-8430 [glduncan@earthlink.net] or Laurie Barlow [barlowco@ix.netcom.com]

Raj Goyal, CSI
NATIONAL DIRECTOR
BUSINESS DEVELOPMENT
30730 Links Court
Temecula, CA 92591-3946
Phone: 909/587-9700
Phone/Fax: 909/587-9710
GRAHAM ARCHITECTURAL PRODUCTS
MAIN OFFICE:
1551 Mt. Rose Avenue
York, PA 17403-2909
Office: 800/755-6274
Fax: 800/366-5097
Web Site: www.GrahamArch.com
e-mail: rogoyal@grahamwindows.com

Tracy Kirkowski
626.792.9878
Fax: 626.792.9851
Pella Architectural
Products, Inc.
1104 E Colorado Blvd.
Pasadena, CA 91106
apella@earthlink.net
VIEWED TO BE THE BEST™

THE PAINT THAT PROTECTS™
THE FINEST PAINTS SINCE 1925
Larry Loo, C.S.I.
Architectural/Engineering
Services
4885 E. 52nd Place, Los Angeles, CA 90040-2884
DUNN-EDWARDS CORPORATION
Employee-Owned
dunnedwards.com
Voicemail: (800) 537-4098, Ext. 7549
Pager: (626) 450-8570
Cell: (626) 590-7777
Fax: (323) 826-2650
E-mail: lloo@dunn-edwards.net

Patrick Byrne and Associates
CONSULTING ELECTRICAL ENGINEERS
18631 Sherman Way, Reseda, CA 91335
Tel: (818) 609-9184 Fax: (818) 609-8378
Email: office@pbaengineers.com

Calpec Engineering
2500 E. Colorado Boulevard,
Suite 250
Pasadena, CA 91107
626-792-8382
626-792-6708 Fax

magnus stark / photography
photography of architecture & design
Magnus Stark/Photography
Pasadena, CA
626-674-0942
626-791-2175 Fax
www.magnusstark.com



July Chapter Events

- 7 ExCom, 8:30 AM, Chapter Office
- 9 FIRST FRIDAY FORUM, 7:30 AM PROGRAM: **Design Build Advocate Rebekah Gladson, AIA, AUA**
SPONSOR: **TBD**
LOCATION: Brookside Country Club
1133 Rosemont Avenue, Pasadena
COST: Includes breakfast: Members: \$15 with timely RSVP, \$18 at the door & timely RSVP for Non-Members. Walk-in Non-Members, \$20.
- 8 & 15 ARE Materials & Methods Seminar & Workshop, Woodbury University. For additional information: Edward Einem, 626.449.6787
- 17 Summer Social: Audubon Center (See page 1)
- 21 Board Meeting: 4:30 PM, Assistance League of Pasadena, 820 East California, Pasadena
- 21 AIA Pasadena & Foothill / Inland Chapters, Joint Building Tour, Azusa Pacific University, 5:30 to 8:00 p.m.
RSVP to Inland California Chapter, 909.799.7213

August Chapter Events

- 12 & 19 ARE Oral Preparation Seminar & Workshop, Woodbury University. For additional information: Edward Einem, 626.449.6787
- 18 Board Meeting: 4:30 PM, Assistance League of Pasadena, 820 East California, Pasadena

September Chapter Events

- 1 ExCom, 8:30 AM, Chapter Office
- 6 Labor Day
- 9 & 16 ARE Construction Documents & Services Seminar & Workshop, Woodbury University. Additional information: Edward Einem, 626-449-6787
- 10 FIRST FRIDAY FORUM, 7:30 AM
PROGRAM: **Rail-Volution**
SPONSOR: **TBD**
LOCATION: Brookside Country Club
1133 Rosemont Avenue, Pasadena
COST: Includes breakfast: Members: \$15 with timely RSVP, \$18 at the door & timely RSVP for Non-Members. Walk-in Non-Members, \$20.
- 15 Board Meeting: 4:30 PM, Assistance League of Pasadena, 820 East California, Pasadena
- 25 Design Awards Celebration: Junior Achievement of Southern California

Office Space Available. Available July 1, 2004.. Approximately 480-2000 sf of net usable floor area. Corner of Lincoln Avenue and Mountain Street, Pasadena. Shared use of kitchen and conference room. Formal reception area -- receptionist service available. On-site parking. For further information, please contact: Fred Wesley, PBWS Architects, (626) 432-5000.

Pasadena & Foothill AIA Chapter Bulletin

Pasadena & Foothill AIA

555 South Oak Knoll Avenue
Pasadena, California 91101

