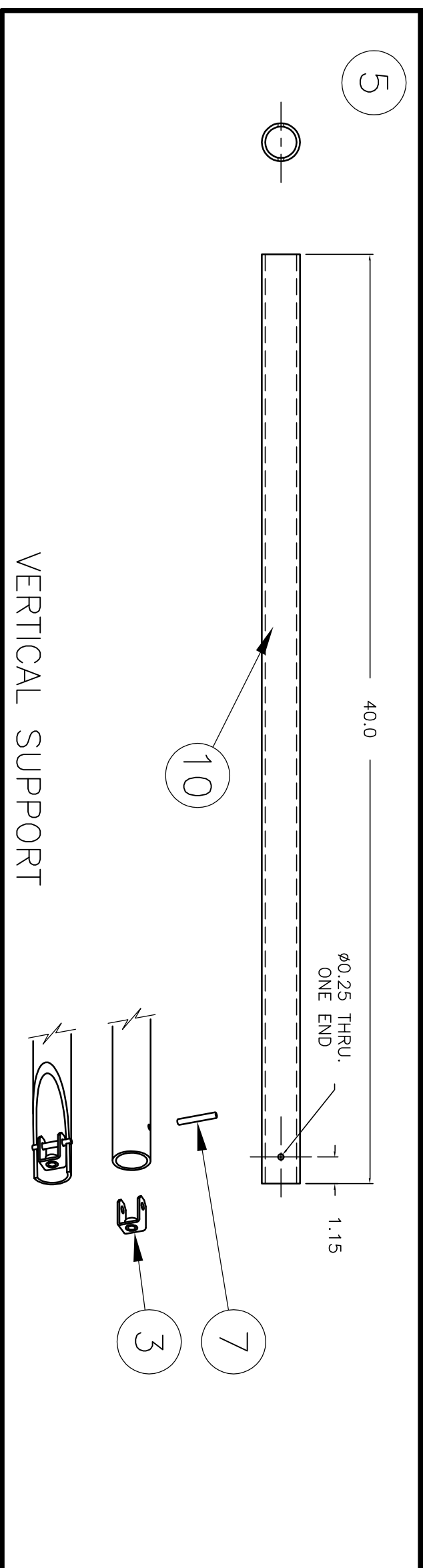
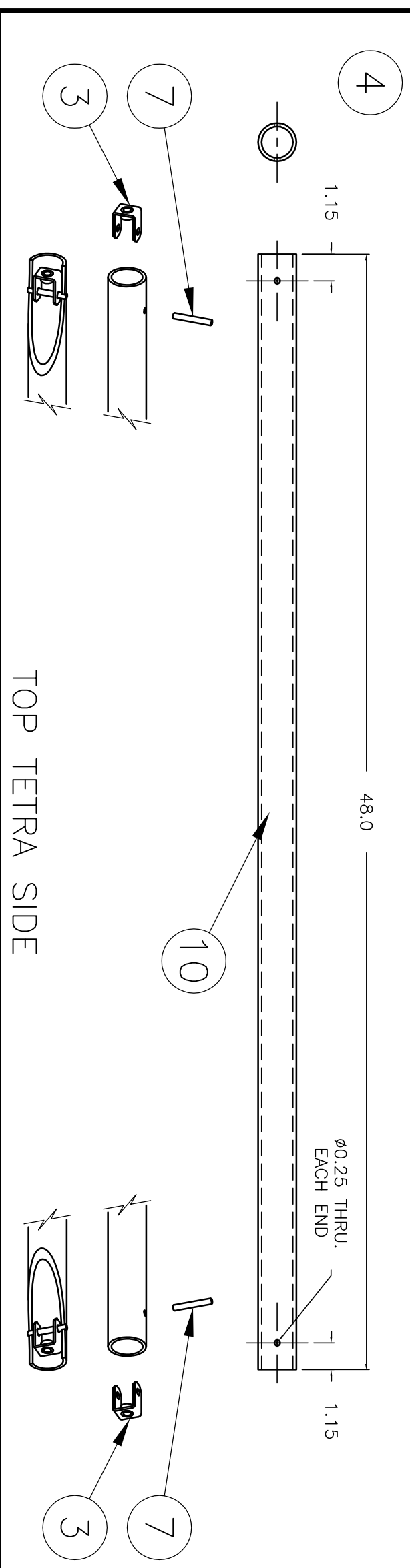


| ITEM | QTY. | DESCRIPTION                    | LENGTH | REMARKS          |
|------|------|--------------------------------|--------|------------------|
| 1    | 4    | TETRA CONNECTOR                | .      | INNOVATION FIRST |
| 2    | 3    | CORNER CONNECTOR               | .      | INNOVATION FIRST |
| 3    | 15   | PIPE NUT                       | .      | INNOVATION FIRST |
| 4    | 6    | TOP TETRA SIDE                 | .      |                  |
| 5    | 3    | VERTICAL SUPPORT               | .      |                  |
| 6    | 1    | WELDED BASE                    | .      |                  |
| 7    | 15   | ROLL PIN, 1/8" X 1 1/2"        | .      |                  |
| 8    | 15   | 3/8"x3/8" HEX HEAD BOLT        | .      |                  |
| 10   | AR   | 1 1/2" SCHED40 ALUMINUM TUBING | .      |                  |

|                 |                  |          |
|-----------------|------------------|----------|
| 1               | 2                | 3        |
| TETRA CONNECTOR | CORNER CONNECTOR | PIPE NUT |



|          |      |       |
|----------|------|-------|
| ENGINEER | DATE | TITLE |
| DRAWN    | DATE |       |
| CHECKED  | DATE |       |
| APPROVED | DATE |       |
| ISSUED   | DATE |       |

**FIRST**  
 200 Bedford Street, Manchester, N.H. 03101  
 (603) 666-3906 • FAX (603) 666-3907

**2005 FIELD ELEMENTS  
 CENTER GOAL ASSY**

|       |       |     |             |
|-------|-------|-----|-------------|
| SIZE  | CLASS | ID. | DRAWING NO. |
| D     | FAS   |     |             |
| SCALE | NA    |     |             |
| SHEET | 1     | of  | 1           |