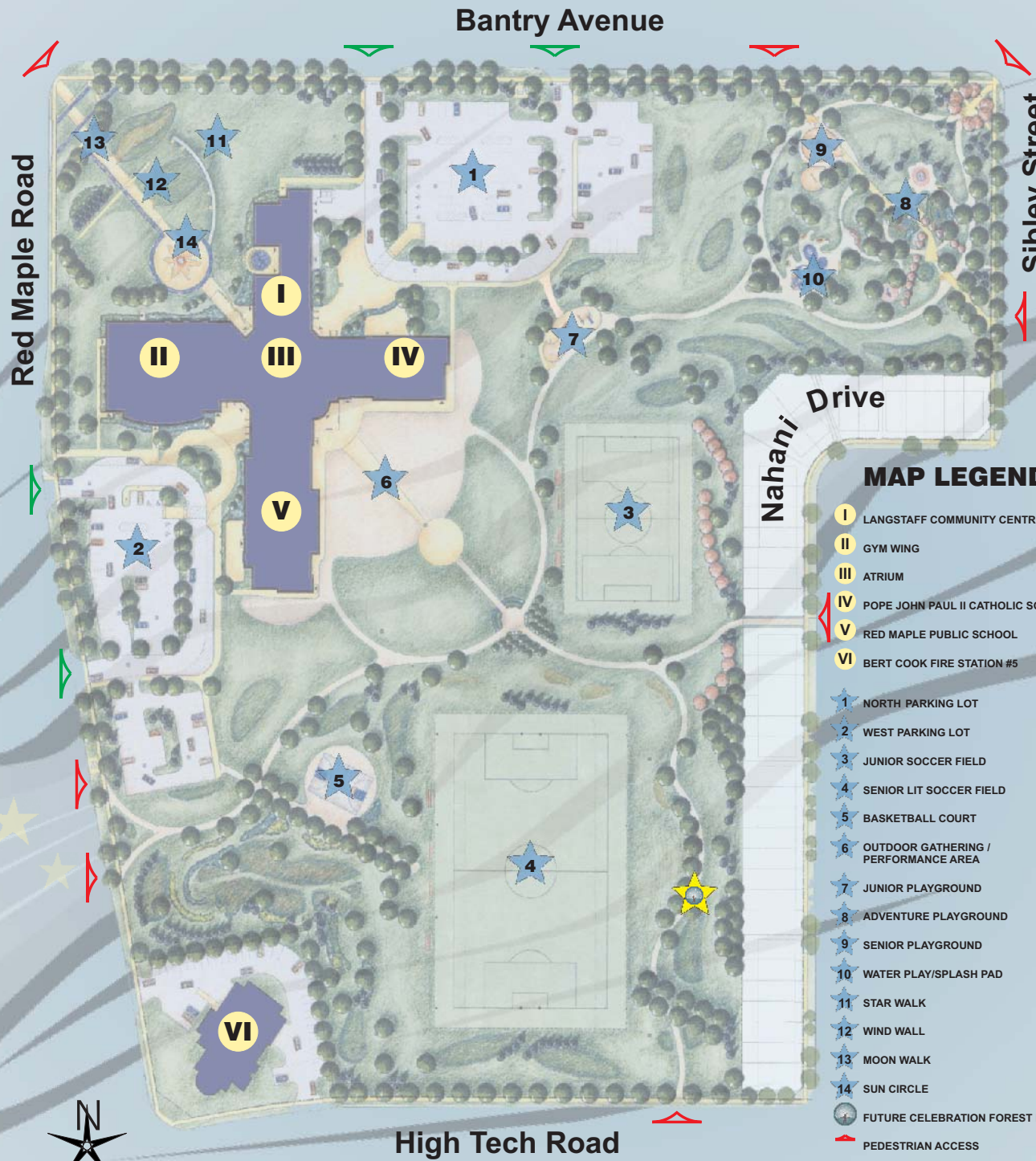


FACILITY COMPONENTS

- A** Craft Room
- B** Pre-School Room
- C** Yorkshire Program Room
- D** Tollgate Program Room
- E** Munshaw Gymnasium
 - 3 Gyms
 - Kitchen
 - Stage
- F** Atrium
- G** Pope John Paul II Catholic School
- H** Red Maple Public School



MAP LEGEND

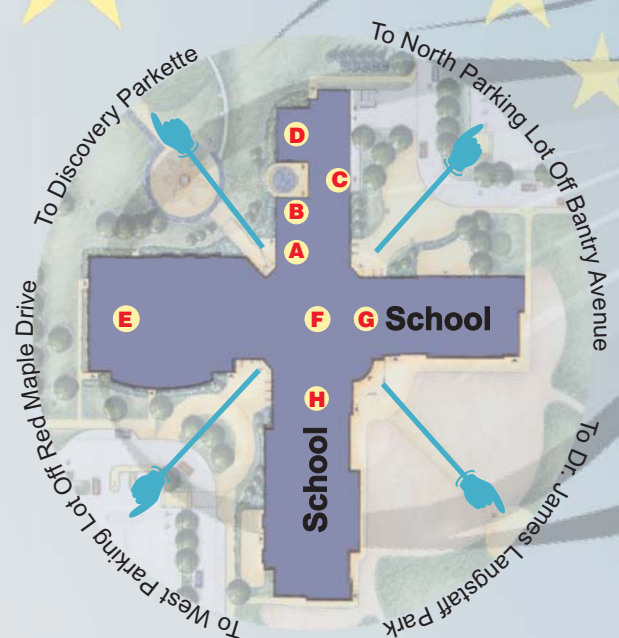
- I** LANGSTAFF COMMUNITY CENTRE
- II** GYM WING
- III** ATRIUM
- IV** POPE JOHN PAUL II CATHOLIC SCHOOL
- V** RED MAPLE PUBLIC SCHOOL
- VI** BERT COOK FIRE STATION #5
- 1** NORTH PARKING LOT
- 2** WEST PARKING LOT
- 3** JUNIOR SOCCER FIELD
- 4** SENIOR LIT SOCCER FIELD
- 5** BASKETBALL COURT
- 6** OUTDOOR GATHERING / PERFORMANCE AREA
- 7** JUNIOR PLAYGROUND
- 8** ADVENTURE PLAYGROUND
- 9** SENIOR PLAYGROUND
- 10** WATER PLAY/SPLASH PAD
- 11** STAR WALK
- 12** WIND WALL
- 13** MOON WALK
- 14** SUN CIRCLE
- 15** FUTURE CELEBRATION FOREST PATH
- ▲** PEDESTRIAN ACCESS
- ▶** VEHICULAR ACCESS

THE PARK

The park and parkette include themed landscape features that encourage users to explore and DISCOVER our universe and demonstrate that function can be combined with education and fun.

The Discovery Parkette stimulates children and adults to consider the constellations above us and experience textures, sights and sounds that surround us. Notable features in the parkette are the Wind Wall, the Star Walk, the Moon Walk and the Sun Circle.

Dr. James Langstaff Park offers a range of active and passive recreation in a DISCOVERY themed landscape. The park has soccer fields, a basketball court and variety of playgrounds including waterplay. The facilities are uniquely arranged to be DISCOVERED as users move along the meandering paths with embedded star, leaf and lightning motifs set amongst grassed berms, the latter representative of tides and waves. The park's features are designed to stimulate thought and conversation about water, sun and wind and their influence on the formation of landscape forms around us.



RECREATION PROGRAMS AND SERVICES

ADULT

- ★ Adult Chorale Introductory Chorus
- ★ Scrap Booking
- ★ Golf
- ★ Ballroom Dancing
- ★ Recreational Badminton
- ★ Kick Boxing
- ★ Beginner Adult Strings Program
- ★ Ceramic Floral Creations
- ★ Flamenco Dancing
- ★ Table Tennis
- ★ Yoga
- ★ Nia
- ★ Pilates
- ★ Tai Chi
- ★ NCCP

PRESCHOOL

- ★ Lullabies and Laughter
- ★ If I Were
- ★ Likeable Recyclables
- ★ Music and Motion
- ★ Welcome to the Neighbourhood
- ★ Creations
- ★ Spill and Splatter
- ★ Stay 'n' Play
- ★ Ten Ten
- ★ Sport Ball

CHILDREN

- ★ Scrap Booking
- ★ Likeable Recyclables
- ★ Bell Raptorball
- ★ Journalism
- ★ Floor Hockey
- ★ Sculpture and Mould
- ★ Mad Science

YOUTH

- ★ Cool Crafts
- ★ Hip Hop
- ★ Master Disguise
- ★ Table Tennis
- ★ Hoops Basketball
- ★ Badminton
- ★ Instructional Babysitter

WORKSHOPS

- ★ Introduction to Folk Art One Stroke
- ★ Mediation for Peace of Mind
- ★ Therapeutic Touch

B.A.S.K.

- ★ Before and After School for Kids



SCHOOL BREAK PROGRAMS

- ★ Festive Fun
- ★ March Break

P.A. DAY PROGRAMS

- ★ Summer Camp
- ★ Kinder Camp
- ★ Playscapes for Children

INFORMATION



For the listing of all seasonal programs that will be offered at the Langstaff Community Centre please obtain a copy of our Leisure Guide at any Community Centre location.

Parks, Recreation and Culture
Main Office

Telephone: (905) 771-8870

Touch Tone Registration: (905) 771-7545

RH eReg: www.richmondhill.ca

Langstaff Community Centre

155 Red Maple Rd.

Richmond Hill, Ontario L4B 4P9

Phone: (905) 882-4295

Red Maple Public School

155 Red Maple Rd.

Richmond Hill, Ontario L4B 4P9

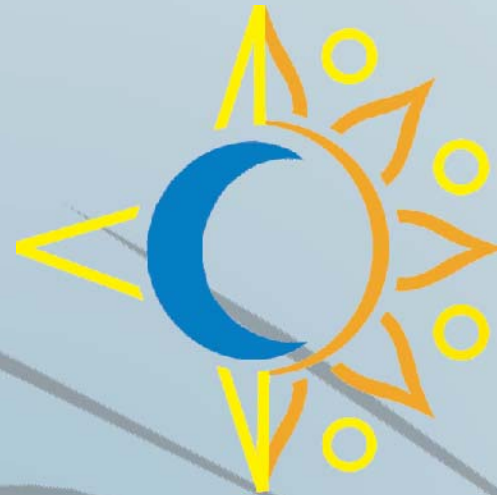
Phone: (905) 771-6157

Pope John Paul II CES

155 Red Maple Rd.

Richmond Hill, Ontario L4B 4P9

Phone: 905-709-3134



Langstaff Discovery Centre

155 Red Maple Road
Richmond Hill



A Partnership Project By



VISION

The Langstaff Discovery Centre is a unique, multi-use complex comprised of Red Maple Public School, Pope John Paul II Catholic School, Langstaff Community Centre, Discovery Parkette and Dr. James Langstaff Park. The complex is situated on a 26 acre site.

The partnership between the Town of Richmond Hill, York Region District School Board and York Catholic District School Board, is the first project of its kind within the community of Richmond Hill. The partnership provides effective operation and services maximizing community benefits through the construction of an integrated site. This is achieved with one building for community centre and two schools, consolidated parking, parkland and shared management arrangements between the partners.

The 120,000 square foot building houses the 54,000 square foot Public School, the 40,000 square foot Catholic School, and the 22,000 square foot Community Centre. The overall cost of construction was approximately \$17,000,000.00.



HISTORY

The Langstaff Discovery Centre is named after the Langstaff Family. Mr. John Langstaff arrived in the area in 1808 and gave the community which surrounded today's intersection of Highway 7 and Yonge Street the name "Langstaff Corners." Langstaff Corners became a major stopping place for travellers between Richmond Hill and Toronto by mid-century. Mr. James Langstaff was the fourth son of Mr. John Langstaff and became one of the earliest Ontario-born and predominantly Ontario-trained doctors. Dr. James Langstaff opened his practice in Richmond Hill in 1849. He passed it onto his son Dr. Rolph Langstaff who handed it onto his own son, Dr. James Rolph Langstaff, who, carried the medical practice in Richmond Hill into the 20th century.

Before World War I began, Langstaff Corners was purchased by the City of Toronto and became part of its Industrial Farm (known as the "Langstaff Jail Farm"). Subsequent development and road construction have physically erased most of Langstaff Corners. The goal of naming this unique multi-use complex "Langstaff Discovery Centre" and the park, "Dr. James Langstaff Park", is twofold - to pass onto today's community, information about Richmond Hill's history and to commemorate the significant role of the Langstaff family in the Town's development.