



Mt. Lebanon School District 2003-04 Report Card

As part of the Pennsylvania Accountability System and in compliance with the No Child Left Behind (NCLB) Act of 2001, Pennsylvania and all districts within the Commonwealth are required to create yearly report cards.

In the spring of 2004, the Mt. Lebanon School District participated in the 2003-04 Pennsylvania System of School Assessment (PSSA). Tests were administered to students in grades 5, 8, and 11 in reading and mathematics. This Report Card presents a summary of the results of the PSSA for the District and individual schools.

All scoring data included in this Report Card was provided by the Pennsylvania Department of Education.

Adequate Yearly Progress

Federal law requires that all states establish a definition of Adequate Yearly Progress (AYP) that each school and district is expected to meet in order to have all students perform at the proficient level in reading and mathematics by 2014.

In 2004, each school district's and each school's spring 2004 PSSA scores must indicate:

- At least 45% of all students must score at the proficient or advanced level in reading.
- At least 35% of all students must score at the proficient or advanced level in mathematics.
- At least 95% of all students, as well as the students in any disaggregated group, must have participated in the test.

All of the schools in the Mt. Lebanon School District met and exceeded the Adequate Yearly Progress targets for 2003-04.

Other Indicators of Adequate Yearly Progress

Attendance – Attendance at the elementary and middle school levels is an additional indicator of Adequate Yearly Progress. The state has set the attendance rate at or above 95 percent. For the 2003-2004 school year, Mt. Lebanon School District student attendance exceeded 95%, thereby meeting AYP.

Graduation Rate – Graduation rate at the high school level is an additional indicator of Adequate Yearly Progress. The state has set the graduation rate at or above 95 percent. For the 2003-2004 school year, the graduation rate for Mt. Lebanon High School was above 95 percent, thereby meeting AYP.

Mt. Lebanon School District 2003-2004 Report Card

Highly Qualified Teachers

All Mt. Lebanon teachers are deemed “highly qualified” according to the state. In Pennsylvania, a fully certified teacher must have a bachelor’s degree, a content area major **and** have passed a content area test. In addition, fully certified teachers in Pennsylvania have completed pedagogical course work in education, including student teaching.

Disaggregated District Scores 2003- 2004

The state requires that each school district disaggregate PSSA test data for several groups of students. The groups include: ethnicity, gender, disability status, migrant status, English proficiency, and economically disadvantaged. Scores are reported by the state for these groups if there are 10 or more students in the group. The following tables on the next two pages indicate the scoring levels of students in each of these groups.

In an effort to provide meaningful results and to protect the privacy of individual students, the state provides school and district results only if the total number of students in a subgroup is more than 10. When the number of students in a group is less than 10, no data is recorded in that group.

PSSA General Performance Level Descriptors

Advanced

Superior academic performance indicating an in-depth understanding and exemplary display of the skills included in the Pennsylvania Academic Standards.

Proficient

Satisfactory academic performance indicating a solid understanding and adequate display of the skills included in the Pennsylvania Academic Standards.

Basic

Marginal academic performance, work approaching, but not yet reaching satisfactory performance. Performance indicates a partial understanding and limited display of the skills included in the Pennsylvania Academic Standards, and the student may need additional instructional opportunities and/or increased student academic commitment to achieve the Proficient level.

Below Basic

Inadequate academic performance that indicates little understanding and minimal display of the skills included in the Pennsylvania Academic Standards. There is a major need for additional instructional opportunities and /or increased student academic commitment to the Proficient Level.

Mt. Lebanon School District 2003-2004 Report Card Grades 5, 8 & 11 PSSA Reading Scores 2003-2004

		Percentage of Students Scoring						
		READING STATE STANDARD - 45% PROFICIENT & ADVANCED						
Grades 5, 8 & 11	Number of Students Tested	Participation Rate	Below Basic	Basic	Proficient	Advanced	Advanced + Proficient	State Average (A+P)
All Students	1,308	99.2%	3.4%	6.8%	29.2%	60.6%	89.8%	64%
Gender								
Males	669	98.7%	4.1%	6.5%	31.9%	57.5%	89.4%	61%
Females	638	99.8%	2.7%	7.1%	26.5%	63.7%	90.2%	68%
Race & Ethnicity								
White	1,241	99.3%	3.2%	6.6%	29.7%	60.5%	90.2%	71%
Black	--	--	--	--	--	--	--	36%
Latino/Hispanic	--	--	--	--	--	--	--	35%
Asian	47	100%	6.5%	8.7%	10.9%	73.9%	84.8%	70%
Native American	--	--	--	--	--	--	--	57%
Other Groups								
IEP	174	98.9%	18.5%	24.9%	35.3%	21.4%	56.7%	21%
Limited English Proficiency	13	100%	30.8%	30.8%	15.4%	23.1%	38.5%	20%
Migrant	--	--	--	--	--	--	--	27%
Economic Disadvantaged	25	96.2%	0.0%	13.0%	47.8%	39.1%	86.9%	43%

Please Note: These tables reflect only students enrolled for the full academic year. Results for fewer than ten students are not reported for confidentiality reasons. Performance level totals may not add to 100% due to rounding.

Grades 5, 8 & 11 PSSA Mathematics Scores 2003-2004

		Percentage of Students Scoring						
		MATHEMATICS STATE STANDARD - 35% PROFICIENT & ADVANCED						
Grades 5, 8 & 11	Number of Students Tested	Participation Rate	Below Basic	Basic	Proficient	Advanced	Advanced + Proficient	State Average (A+P)
All Students	1,308	99.2%	5.5%	8.1%	26.9%	59.5%	86.4%	57%
Gender								
Males	671	98.7%	5.1%	6.8%	26.6%	61.4%	88%	57%
Females	636	99.5%	5.8%	9.5%	27.2%	57.5%	84.7%	56%
Race & Ethnicity								
White	1,241	99.2%	5.4%	8.1%	27.5%	59.0%	86.5%	63%
Black	--	--	--	--	--	--	-	26%
Latino/Hispanic	--	--	--	--	--	--	-	32%
Asian	46	97.9%	2.2%	4.4%	13.3%	80%	93.3%	75%
Native American	--	--	--	--	--	--	--	49%
Other Groups								
IEP	173	98.3%	30.2%	24.4%	22.7%	22.7%	45.4%	20%
Limited English Proficiency	13	100%	30.8%	7.7%	23.1%	38.5%	61.6%	31%
Migrant	--	--	--	--	--	--	--	30%
Economic Disadvantaged	25	96.2%	13.0%	17.4%	34.8%	34.8%	69.6%	35%

Mt. Lebanon School District 2003-2004 Report Card

Grade 5 PSSA Reading Scores 2003-2004

2003 – 2004 Percentage of Students Scoring								
READING STATE STANDARD - 45% PROFICIENT & ADVANCED								
Grade 5	Number of Students Tested	Participation Rate	Below Basic	Basic	Proficient	Advanced	Advanced & Proficient District	State
All Students	392	99.5%	3%	8%	20%	69%	89%	63%
Gender								
Males	208	99%	4%	9%	24%	64%	88%	59%
Females	184	100%	1%	7%	17%	76%	93%	67%
Race & Ethnicity								
White	366	99.5%	3%	7%	21%	70%	91%	71%
Black	--	--	--	--	--	--	--	35%
Latino/Hispanic	--	--	--	--	--	--	--	36%
Asian	16	100%	0	19%	6%	75%	81%	72%
Native American	--	--	--	--	--	--	--	57%
Other Groups								
IEP	55	98.2%	15%	24%	26%	36%	62%	24%
Limited English Proficiency	--	--	--	--	--	--	--	25%
Migrant	--	--	--	--	--	--	--	29%
Economic Disadvantaged	--	--	--	--	--	--	--	42%

Please Note: These tables reflect only students enrolled for the full academic year. Results for fewer than ten students are not reported for confidentiality reasons. Performance level totals may not add to 100% due to rounding.

Grade 5 PSSA Mathematics Scores 2003-04

2003 – 2004 Percentage of Students Scoring								
MATHEMATICS STATE STANDARD - 35% PROFICIENT & ADVANCED								
Grade 5	Number of Students Tested	Participation Rate	Below Basic	Basic	Proficient	Advanced	Advanced & Proficient District	State
All Students	393	99.5%	2%	6%	17%	75%	92%	61%
Gender								
Males	209	99.1%	2%	7%	19%	72%	91%	63%
Females	184	100%	2%	5%	15%	77%	92%	61%
Race & Ethnicity								
White	367	99.5%	2%	6%	17%	75%	92%	70%
Black	--	--	--	--	--	--	--	31%
Latino/Hispanic	--	--	--	--	--	--	--	38%
Asian	16	100%	0	0	19%	81%	100%	78%
Native American	--	--	--	--	--	--	--	55%
Other Groups								
IEP	55	98.2%	13%	27%	26%	35%	61%	28%
Limited English Proficiency	--	--	--	--	--	--	--	34%
Migrant	--	--	--	--	--	--	--	36%
Economic Disadvantaged	--	--	--	--	--	--	--	42%

Mt. Lebanon School District 2003-2004 Report Card
Grade 8 PSSA Reading Scores 2003-2004

2003 – 2004 Percentage of Students Scoring								
READING STATE STANDARD - 45% PROFICIENT & ADVANCED								
Grade 8	Number of Students Tested	Participation Rate	Below Basic	Basic	Proficient	Advanced	Advanced & Proficient	
							District	State
All Students	474	99.8%	4%	7%	33%	57%	90%	69%
Gender								
Males		99.6%	6%	5%	33%	56%	89%	64%
Females		100%	2%	8%	32%	58%	90%	73%
Race & Ethnicity								
White		99.8%	3%	7%	33%	57%	90%	76%
Black		--	--	--	--	--	--	42%
Latino/Hispanic		--	--	--	--	--	--	40%
Asian		100%	12%	0%	18%	71%	89%	73%
Native American		--	--	--	--	--	--	59%
Other Groups								
IEP		100%	20%	27%	39%	14%	53%	23%
Limited English Proficiency		--	--	--	--	--	--	19%
Migrant		--	--	--	--	--	--	29%
Economic Disadvantaged		--	--	--	--	--	--	47%

Please Note: These tables reflect only students enrolled for the full academic year. Results for fewer than ten students are not reported for confidentiality reasons. Performance level totals may not add to 100% due to rounding.

Grade 8 PSSA Mathematics Scores 2003-2004

2003 – 2004 Percentage of Students Scoring								
MATHEMATICS STATE STANDARD - 35% PROFICIENT & ADVANCED								
Grade 8	Number of Students Tested	Participation Rate	Below Basic	Basic	Proficient	Advanced	Advanced + Proficient	
							District	State
All Students	473	99.4%	7%	9%	35%	50%	85%	58%
Gender								
Males		99.6%	8%	7%	34%	51%	85%	58%
Females		99.1%	5%	11%	35%	48%	83%	58%
Race & Ethnicity								
White		99.6%	6%	9%	35%	49%	84%	65%
Black		--	--	--	--	--	--	27%
Latino/Hispanic		--	--	--	--	--	--	32%
Asian		94.1%	0	6%	13%	81%	94%	77%
Native American		--	--	--	--	--	--	50%
Other Groups								
IEP		98.4%	37%	24%	22%	18%	40%	17%
Limited English Proficiency		--	--	--	--	--	--	27%
Migrant		--	--	--	--	--	--	25%
Economic Disadvantaged		--	--	--	--	--	--	36%

Mt. Lebanon School District 2003-2004 Report Card

Grade 11 PSSA Reading Scores 2003-2004

2003 – 2004 Percentage of Students Scoring								
READING STATE STANDARD - 45% PROFICIENT & ADVANCED								
Grade 11	Number of Students Tested	Participation Rate	Below Basic	Basic	Proficient	Advanced	Advanced & Proficient State	
							District	State
All Students	442	98.4%	5%	6%	34%	56%	90%	61%
Gender								
Males	218	97.3%	3%	6%	39%	53%	92%	58%
Females	223	99.6%	6%	7%	29%	59%	88%	63%
Race & Ethnicity								
White	423	98.6%	4%	6%	34%	55%	89%	67%
Black	--	--	--	--	--	--	--	28%
Latino/Hispanic	--	--	--	--	--	--	--	29%
Asian	14	100%	14	7%	7%	71%	78%	63%
Native American	--	--	--	--	--	--	--	57%
Other Groups								
IEP	55	98.2%	19%	23%	44%	15%	57%	16%
Limited English Proficiency	--	--	--	--	--	--	--	14%
Migrant	--	--	--	--	--	--	--	22%
Economic Disadvantaged	12	92.3%	--	17%	50%	33%	83%	34%

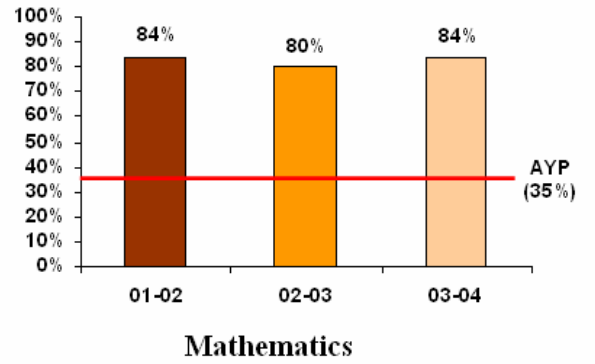
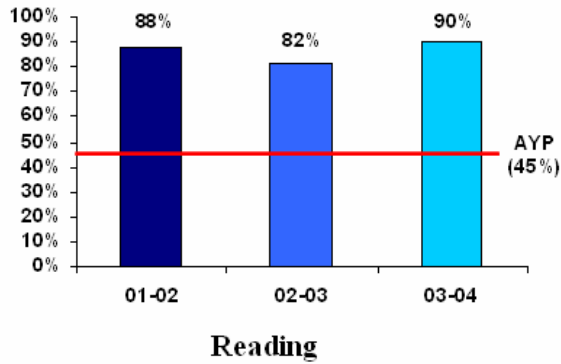
Please Note: These tables reflect only students enrolled for the full academic year. Results for fewer than ten students are not reported for confidentiality reasons. Performance level totals may not add to 100% due to rounding.

Grade 11 PSSA Mathematics Scores 2003-2004

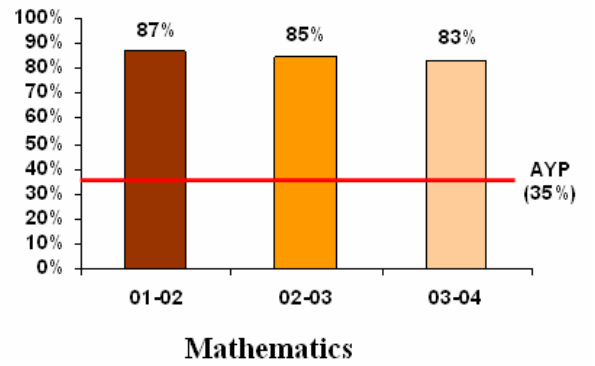
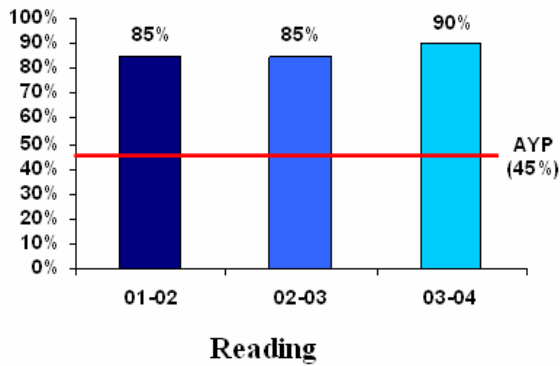
2003 – 2004 Percentage of Students Scoring								
MATHEMATICS STATE STANDARD - 35% PROFICIENT & ADVANCED								
Grade 11	Number of Students Tested	Participation Rate	Below Basic	Basic	Proficient	Advanced	Advanced + Proficient State	
							District	State
All Students	442	98.4%	8%	9%	28%	56%	84%	49%
Gender								
Males	218	97.3%	6%	6%	27%	61%	88%	50%
Females	223	99.6%	10%	11%	28%	51%	79%	48%
Race & Ethnicity								
White	423	98.6%	8%	9%	28%	55%	83%	55%
Black	--	--	--	--	--	--	--	18%
Latino/Hispanic	--	--	--	--	--	--	--	19%
Asian	14	100%	7%	14%	7%	71%	78%	70%
Native American	--	--	--	--	--	--	--	46%
Other Groups								
IEP	55	98.2%	40%	24%	20%	16%	36%	11%
Limited English Proficiency	--	--	--	--	--	--	--	29%
Migrant	--	--	--	--	--	--	--	25%
Economic Disadvantaged	12	92.3%	8%	17%	42%	33%	75%	24%

Mt. Lebanon School District 2003-2004 Report Card Three Year Trend Data

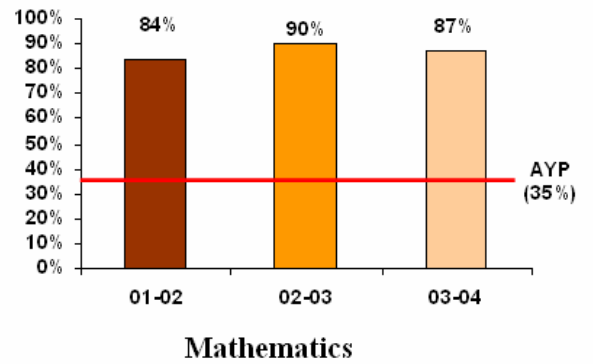
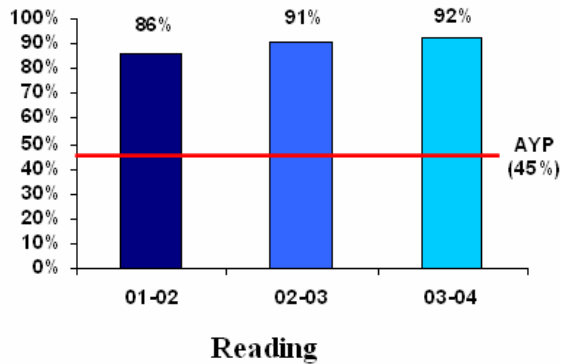
Mt. Lebanon High School



Jefferson Middle School

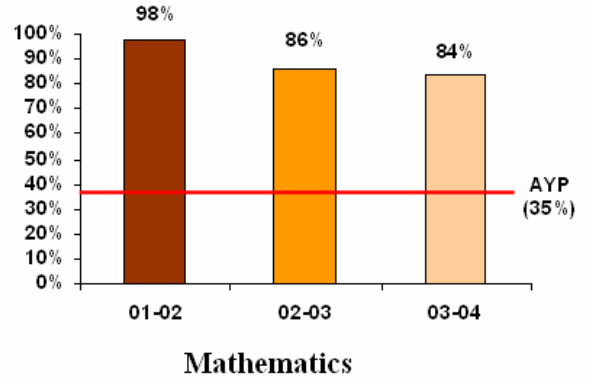
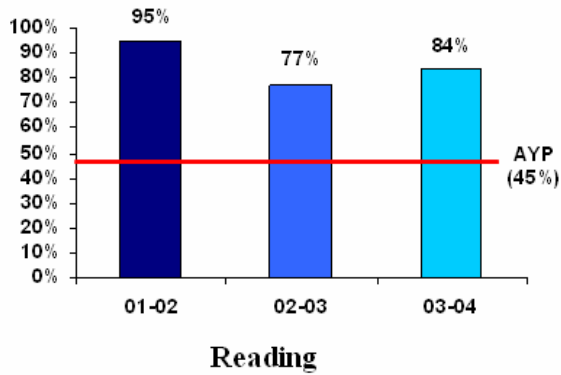


Mellon Middle School

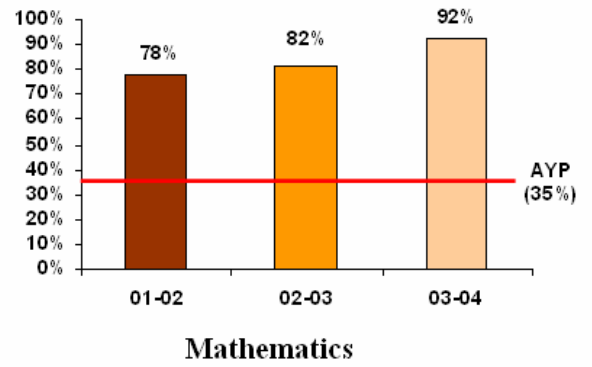
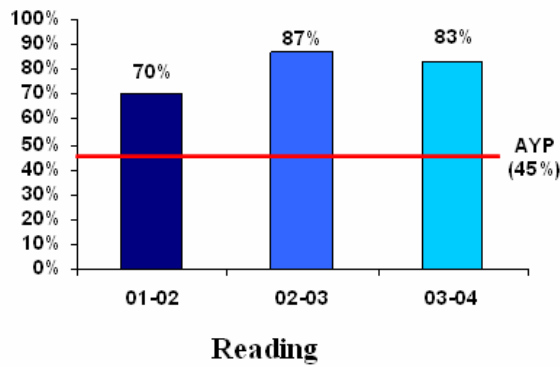


Mt. Lebanon School District 2003-2004 Report Card Three Year Trend Data

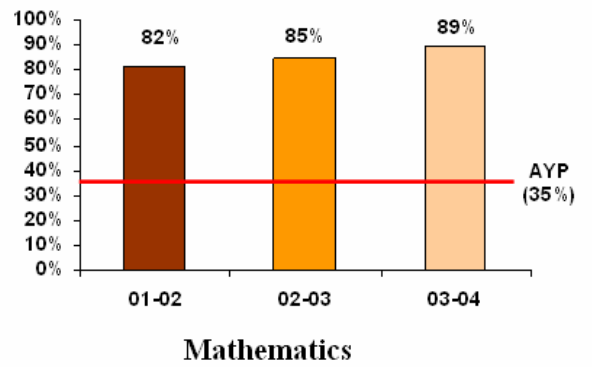
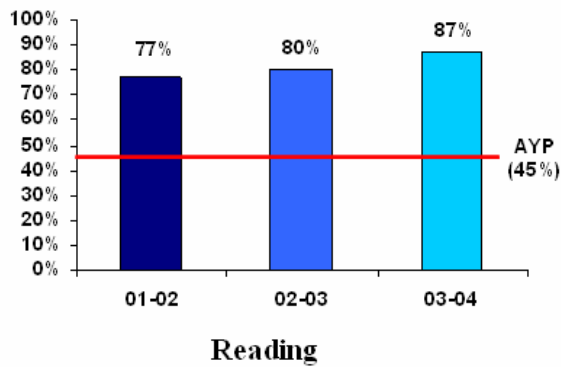
Foster Elementary School



Hoover Elementary School

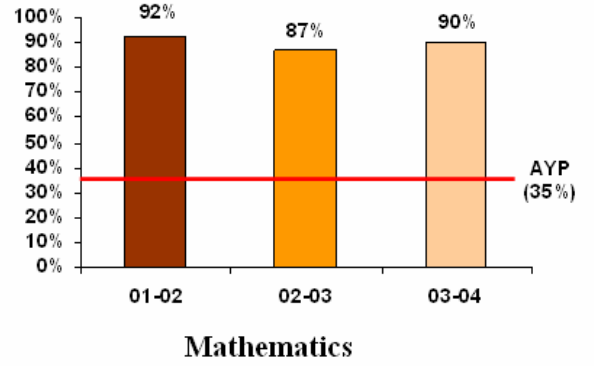
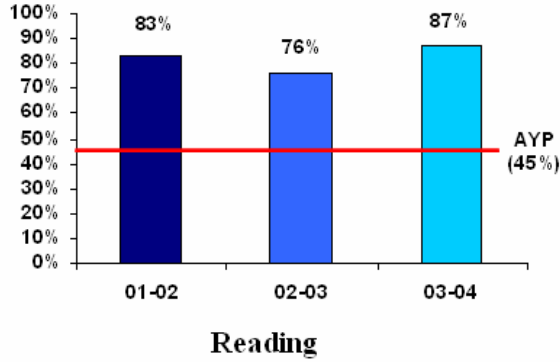


Howe Elementary School

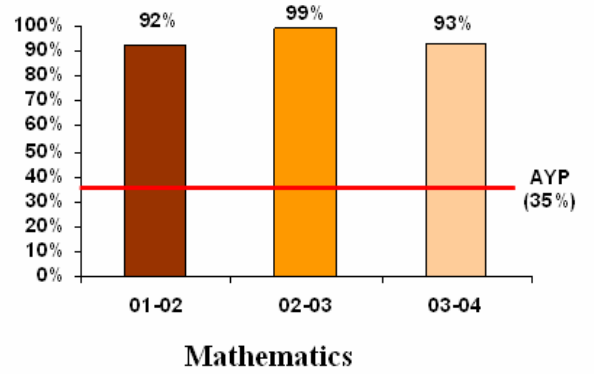
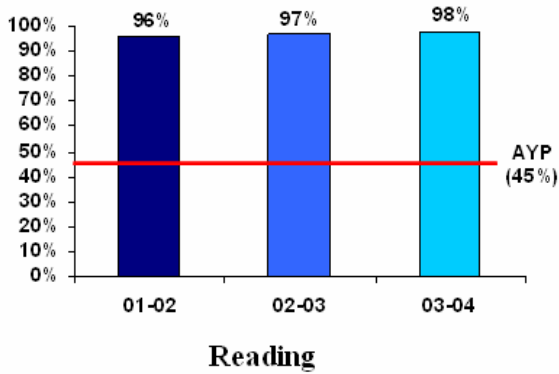


Mt. Lebanon School District 2003-2004 Report Card Three Year Trend Data

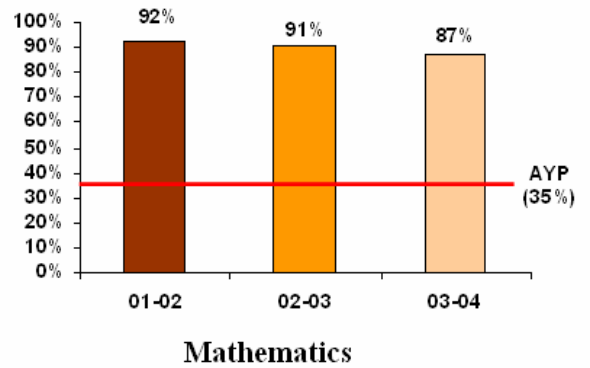
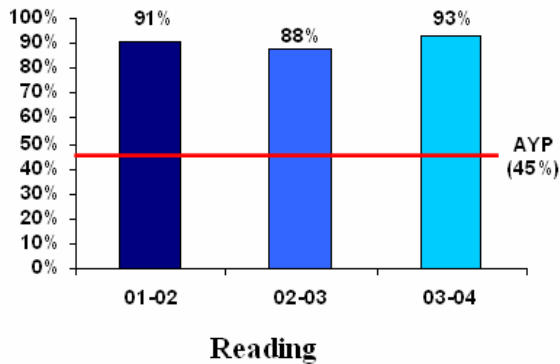
Jefferson Elementary School



Lincoln Elementary School

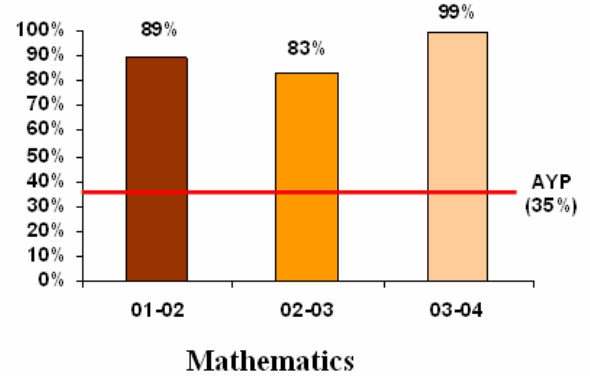
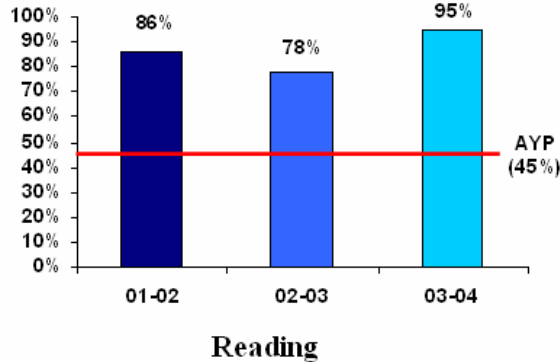


Markham Elementary School



Mt. Lebanon School District 2003-2004 Report Card Three Year Trend Data

Washington Elementary School



Mt. Lebanon School District Awards and Recognitions for 2003-2004

Lincoln Elementary School was named a National Blue Ribbon School by the U.S. Department of Education in 2000-2001 and 2002-2003.

Expansion Management Magazine rated Mt. Lebanon School District one of the top school districts in the country in their Education Quotient 2003. The District received a Gold Medal Rating for outstanding academic achievement.

The Mt. Lebanon School District was selected by SchoolMatch in 2003 and 2004 for their Annual School System “What Parents Want Award.” SchoolMatch is an educational consulting and research firm with a database containing information on all 15,576 school districts in the country.

The Class of 2004 has 11 National Merit Semifinalists. All eleven students were also named National Merit Finalists.

The Class of 2003 graduated 457 students, 99 percent went on to pursue full time or Armed Service education. Approximately 92 percent of the class took the Scholastic Assessment Test. The cumulative mean score of 1146 is 120 points higher than the national mean and 144 points more than the Pennsylvania mean score.

The Mt. Lebanon High School Theatre program was awarded the Educational Theatre Association’s 2003 Outstanding School Award. Only six schools in the nation received this award.

Mt. Lebanon School District Academic Games teams won the 2003 National Championship in all divisions: elementary, middle and high school.

Mt. Lebanon High School sports teams won four championship titles this year. The rifle team, girls' softball, and girls' lacrosse teams all won WPIAL championships this year, while the hockey team won the PIHL Penguin Cup championship and finished as state finalists. Girls' lacrosse also won the WPSLA championship.

Mt. Lebanon student athletes posted an average grade point average of 3.3.

The High School Model United Nations team took best delegation awards at all four of the Model United Nations tournaments they participated in this year, including the prestigious Johns Hopkins University tournament. The team has won nine consecutive championships.

The High School Forensic Team won the Western Pennsylvania District Forensic Championship for the fourth year in a row. The team won the state championship in dramatic interpretation and extemporaneous speaking and moved on to capture a second place title in extemporaneous speaking at the national competition in Salt Lake City.

The High School Orchestra performed to wonderful reviews in April at Carnegie Hall in New York City. This is the second time the orchestra was selected to play at Carnegie Hall.

Mt. Lebanon High School's Future Business Leaders of America had an outstanding performance at the 2003-2004 State Leadership Conference at Seven Springs in March. They captured more awards than any other chapter in the area. Our students competed at the national FBLA conference with over 7,000 other student delegations and won third place honors in website development and JAVA script. This is Mt. Lebanon High School's first year as an FBLA chapter.