

Distribution of Population in Liberia **Villages > 1000 Inhabitants**

— Major Roads

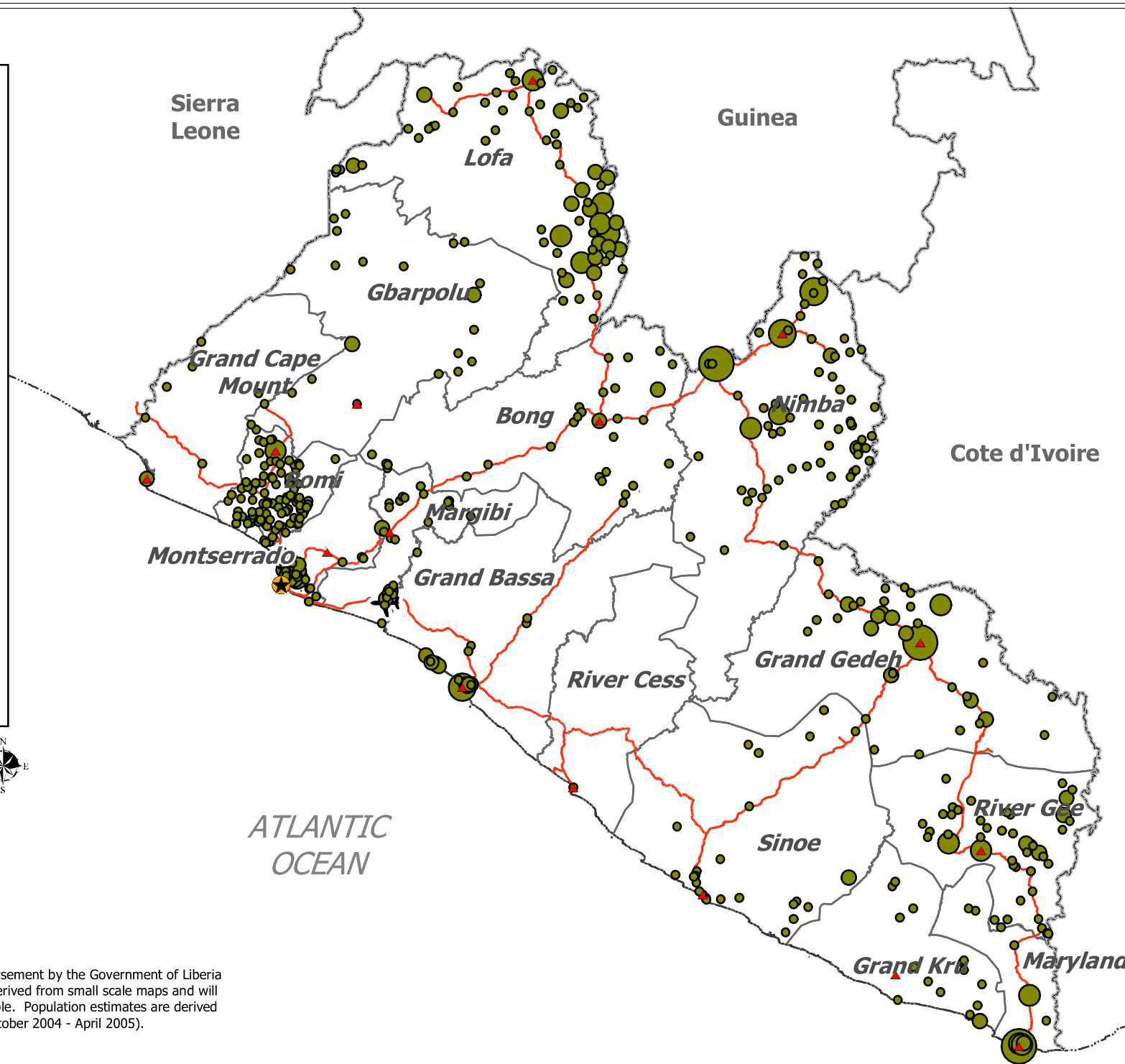
✈ Roberts International Airport

Population Centers

- 1000 - 2750
- 2751 - 7000
- 7001 - 17500
- 17501 - 35250
- 35251 - 75000

Key Cities

- ★ National Capital
- ▲ County Capital
- County Boundaries
- National Boundaries
- - - Coast Line



Boundaries depicted do not represent official endorsement by the Government of Liberia or by the United Nations. Many boundaries were derived from small scale maps and will be updated as soon as better information is available. Population estimates are derived from the results of the Village Mapping Project (October 2004 - April 2005).