



ABERDEEN HIGH

January 2006

251 Paradise Road, Aberdeen, MD 21001 • 410-273-5500 • 410-273-5587 fax

AT A GLANCE

FACILITY OPENED: 1952

ADDITIONS/RENOVATIONS: 2004

SCHOOL CAPACITY: 1,360

TOTAL ENROLLMENT: 1,543

NUMBER OF CLASSROOMS: 74

NUMBER OF PORTABLES: 0

AVERAGE CLASS SIZE: 25.4

COMPUTER/STUDENT RATIO: 1:4

VOLUMES IN MEDIA CENTER: 12,698

NUMBER OF PARKING SPACES: 359

ASSISTANT PRINCIPALS:

Valerie L. Cooper

Aaron H. Pretlow

Michael L. O'Brien

INSTRUCTIONAL FACILITATOR:

Mary A. McComas

CLASSROOM TEACHERS: 81



WELCOME

Aberdeen High School's philosophy of education recognizes and responds to our community of diverse learners with consideration to the demands of an increasingly complex and constantly changing technological society. The beliefs and daily operations of the school hinge upon the necessity of life-long learning in a spirit of cooperation among students, community, and academic leaders.

The Freshman Academy is led by a collaborative group of staff members whose goal is to increase the success of ninth graders as they enter high school. The School of Math, Science, and Technology recognizes and responds to our diverse students with consideration to the demands of an increasingly complex and constantly changing technology society. The School of Humanities, Performing and Visual Arts recognizes that our students possess their unique qualities of creative expression. Additionally, the Science and mathematics Academy magnet school is located in Aberdeen High School, and provides unique opportunities for students in terms of its program and its access to technology. Students are invited to join the Science and mathematics Academy based on an application process conducted during the winter of each year.

The school year is divided into two semesters of 18 weeks each. Credits are semesterized, giving the student the opportunity to earn 16 half-credits annually. Students take eight courses each semester within a rotating modified-block daily schedule. Classes are 45 or 90 minutes in length.

Thomas M. Szerensits
Principal



Student Population Characteristics

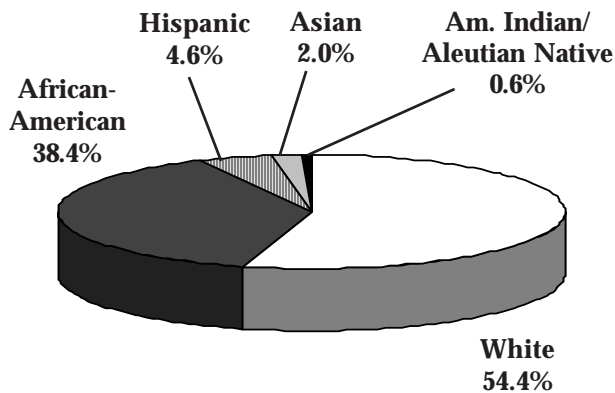
Student Enrollment	2002	2003	2004	2005	2006
Grade					
9	301	358	359	485	526
10	382	318	342	337	418
11	285	305	252	277	312
12	252	269	297	259	287

Students Absent					
< 5 days	18.2%	19.8%	15.9%	20%	
> 20 days	31.5%	31.1%	32.8%	30.7%	
Student Mobility					
Entrants	15.5%	13%	13.8%	12.6%	
Withdrawals	18.3%	17.1%	20.2%	16.7%	

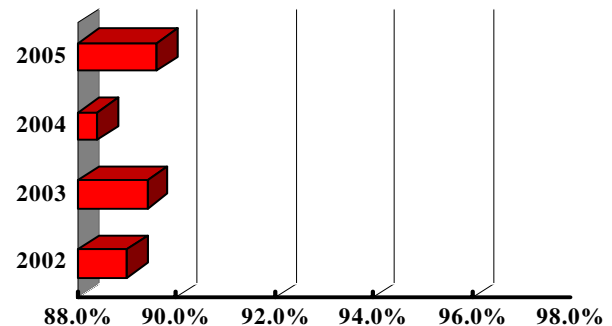
Students Receiving Special Services	2003 %	2004 %	2005 %
Free/Reduced Price Meals	24.8	32.9	28.1
Limited English Proficient	*	*	*
Special Education	15.2	13.6	12.5

* Fewer than 5 students

Student Membership by Ethnicity (2005)



Student Attendance

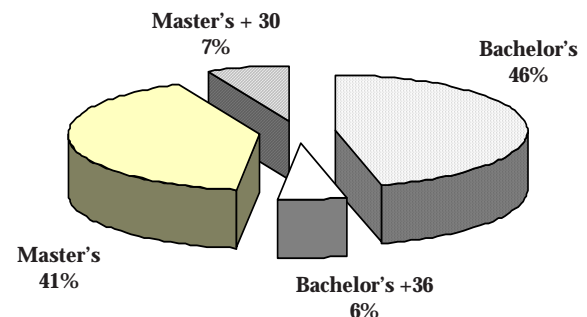


School Staff Characteristics

Professional Staff Experience



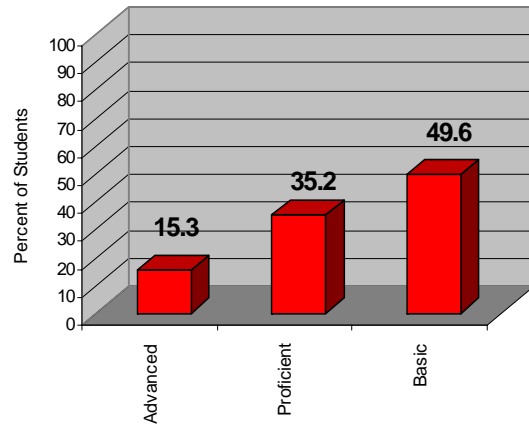
Education of Professional Staff



Post-Secondary Plans/Intentions (Class of 2005)

Plans/Intentions	#	%
Employment	43	19.9
Technical/Specialized School	15	6.9
2 year college	83	38.2
4 year college	88	40.6
Military	12	5.5
Other and no response <i>Includes those entering an apprenticeship program</i>	17	7.8

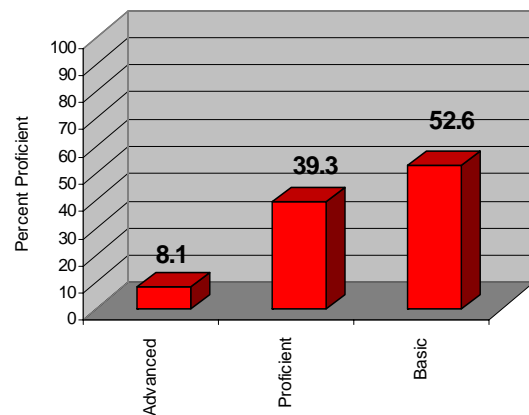
2005 English 2: Grade 10 Proficiency Levels



Grade Point Averages: 2005

Grade	Number of Students	Average GPA
Grade 9	493	2.03
Grade 10	355	2.19
Grade 11	284	2.32
Grade 12	272	2.32
TOTAL Average GPA: 2.22		

2005 Geometry: Grade 10 Proficiency Levels



2005 High School Assessment Results

Test	Passing Score	% Passing
Algebra	412	50.9
English II	407	50.4
Government	394	50.9
Biology	400	42.9

Average SAT Scores

	2005 Math	2005 Verbal	2005 TOTAL	2004 TOTAL	2003 TOTAL
Aberdeen	479	475	954	921	922
Harford County	521	511	1032	1020	1021
State	515	511	1026	1026	1024
National	520	508	1028	1026	1026