

Atlanta, GA

45TH ANNIVERSARY
Six Flags[®]
OVER GEORGIA



**2006
Park Map
& Guide**

**NEW FOR
2006**

GOLIATH

A GIANT AMONG COASTERS

Welcome!

Welcome to Six Flags Over Georgia, home to over 100 acres of shows, attractions, and exciting rides like GOLIATH - A Giant Among Coasters. Since 1967 we have proudly hosted four generations of families with friendly, courteous service. We are honored to continue this tradition with you today and look forward to making your visit a pleasant one. Should you have a question not covered in this guide, please do not hesitate to ask one of our team members for assistance. We hope you have a safe, fun, and memorable visit.



Guest Services

GUEST RELATIONS—The Guest Relations Office is located in The Promenade at the entrance to Six Flags. Team Members are on duty to assist guests with park information or specific needs.

INCLEMENT WEATHER—Some rides and shows may close temporarily during severe weather conditions. As soon as conditions permit safe operations, these rides and shows will re-open. No rain checks will be issued.

STORAGE LOCKERS—Located at Guest Relations, near Monster Plantation, in the USA and Cotton States section of the park, and at Skull Island. Purchase locker wristbands in most nearby retail locations.

BABY CHANGING—A diapering and nursing center is located in the Lost Parents Schoolhouse across from Rabun Gap Railroad Station. Space is also provided in all women's and most men's restrooms.

STROLLER & WHEELCHAIR RENTAL—Strollers, wheelchairs and electronic convenience vehicles (ECV's) are available to rent on a first-come first-serve basis, next to the Georgia Cyclone in the British Section of the park. A nominal fee is required and availability is limited.

CHECKS—Guest Relations cannot accept personal checks made out to "cash". With a valid driver's license, guests may use a check to purchase tickets at Will Call or Season Passes at Guest Relations. Cash can be withdrawn from ATMs located throughout the park.

CREDIT CARDS—American Express, Visa, MasterCard, and the Discover Card are honored at ticket booths and most gift shops.

ATM CASH MACHINES—Seven ATM machines are available at the park. These locations are: Six Flags Marketplace, Dee Jay's Diner, Cotton States Games, Plantation House, Six Flags Mercantile, the USA section near GOLIATH, and the Will Call window at the front gate.

FIRST AID—First Aid is located next to Lost Parents Schoolhouse. A paramedic is on duty at all times. Internal medications cannot be administered, but are available from on-site vending machines.

KENNEL—Pets are not allowed inside Six Flags, but may be boarded in the kennels located at the Toll Plaza. Pets cannot be kept overnight and must have current vaccinations and registration tags. Water is provided, but not food. A nominal fee is required.

LOST PARENTS—All lost children (or parents) are directed to the Lost Parents Schoolhouse across from Rabun Gap Railroad Station. Instruct children to contact any Team Member should they need assistance. Messages for separated parties may also be left inside Lost Parents.

RESTROOMS/WATER FOUNTAINS/TELEPHONES—are located throughout the park and are noted on the enclosed map.



Flash Your Pass

Show your 2006 Season Pass at any dining or retail location to take advantage of special offers available only to Season Pass holders. Even more great offers are available during special events. Visit sixflags.com/georgia for more details throughout the season.



Not a Season Pass holder? Not a problem. Enjoy the benefits of a Season Pass to Six Flags immediately by turning your one-day ticket into a Season Pass at many retail locations in the park. Season Passes are also available online at sixflags.com.

Special Events

Six Flags Over Georgia hosts several local and regional events throughout the year. Check our online calendar at sixflags.com/georgia for more information.

March 4-30—Six Flags Over Georgia opens for weekend operation and March Mayhem begins! Process your season pass early to receive Bring-A-Friend-Free coupons and invitations to upcoming Season Passholder EXCLUSIVE events.

April 1-9: Spring Break—It's a week-long party as Six Flags Over Georgia celebrates Spring Break with a week of rides, shows, and special events.

April 14-15: Christian Music Weekend—Some of your favorite Christian music artists perform at the Southern Star Amphitheater. Concerts are FREE with park admission.

April 21 & 28: Physics/Physical Science Day—Exclusive event for students. Teachers see sixflags.com for details.

April 22: Marketing Education Day—Exclusive event for students. Teachers see sixflags.com for details.

May 5: Elementary Academic Day—Exclusive event for students. Teachers see sixflags.com for details.

April 28 & May 5: Math and Science Days—Exclusive event for students. Teachers see sixflags.com for details.

May 26—Six Flags Over Georgia opens for daily operation.

June 15, 16 & 17: Atlanta Fest—It's three days of fun, music, and fellowship when the largest Christian music festival returns for its 20th anniversary.

July 1-4 : Salute 2 America—Salute our nation's heritage with four full days of all-American pastimes, including fireworks.



August 5-6: Kid's Fest—It's a whole weekend just for kids! Join us for a fun and exciting weekend full of music, interactive exhibits, games and much more.

October Weekends: Family Fright Fest—Your favorite ghouls and goblins are back for another year of frightfully good fun. The entire park transforms into a haunted wonderland, featuring haunted houses, all new shows, and more.

November 4 : Season Passholder Appreciation Day—2006 Season Passholders get the park all to themselves on this exclusive day.

Park Policies



- Six Flags is a smoke-free environment. Guests cannot smoke anywhere in the park except for the designated smoking areas. Please see map for details.
- Line jumping/line cutting or holding places in line is strictly prohibited. Guests are not permitted to save places in line or exit the line and return for any reason. Guests who violate this policy may be ejected from the park without a refund.
- Guests with certain body proportions involving height and/or weight, and guests with certain motor control limitations may not be able to ride some attractions where safety restraints will not operate as designed. Please ask a ride attendant or inquire at Guest Relations before waiting in line if you have any questions.
- For your safety, some rides may close temporarily during electrical storms, heavy rain and other weather conditions, or for required maintenance. Every effort will be made to re-open closed rides as soon as possible. Rain checks will not be issued.
- Shirts and shoes must be worn at all times in the park.
- Radios or tape players are not allowed.
- Bottled beverages, foodstuffs or personal coolers may not be brought into the park.
- Roller blades, roller skates, shoes with wheels, and scooters are not permitted.
- Alcoholic beverages are not sold in the park and are not allowed on park property.
- Guests wearing articles of clothing containing obscenity, profanity or deemed inappropriate may be asked to change the clothing.
- Guests acting in an inappropriate manner may be asked to leave the park.



General Information

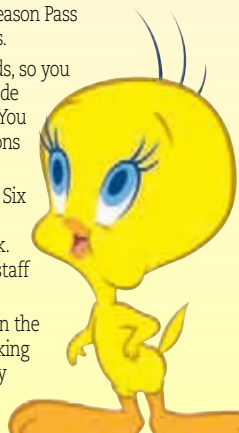
Guests With Disabilities—For more information on rider access to all rides, please stop by the Guest Relations office located at The Promenade and pick up a guide providing detailed information on the accessibility of rides, shows, games and restaurants. Rental of wheelchairs, motorized chairs, TDD machines and Fast Lane (virtual queue line options) are available.

Season Pass—Enjoy unlimited visits during the 2006 operating season with a Six Flags Over Georgia Season Pass on sale at Guest Relations. You can also upgrade your admission today to a Season Pass at many of the park's retail locations. A Six Flags Season Pass may be used at participating Six Flags Theme Parks. The Season Pass processing center is located in the East Plaza at the Main Gate. Season Pass Parking Permits may be purchased at Will Call or Guest Relations.

Looney Loot—Not all locations can accept checks or credit cards, so you may purchase the park's own currency, which can be spent inside the park but may not be used for parking or admission tickets. You may obtain Looney Loot using a credit card at the Guest Relations office at The Promenade.

Bag Check—To ensure that your day is safe, enjoyable and fun, Six Flags Over Georgia uses electronic devices as well as security Hosts/Hostesses to inspect all items being brought into the park. Since metal objects may activate the system, please allow our staff to inspect bags and any other items upon request.

Re-Entry—If you wish to leave Six Flags Over Georgia and return the same day, have your hand stamped at the exit. Retain your parking ticket and present it at the Toll Plaza entrance again for re-entry parking the same day.



Spectacular Shows

Show schedules available in all gift shops.

GOTHAM CITY & USA SECTIONS

95 **Rhythm & Grooves**

Six Flags over Georgia is proud to present this tribute to some of the pioneers and hit makers from the early days of R&B. We salute artists such as Stevie Wonder, Aretha Franklin and Ray Charles, who built the foundation for rhythm and blues and helped guide the direction music has taken today.

104 **Axis Arena**

Various special events throughout the season.

FRENCH & CONFEDERATE SECTIONS

24 **Crystal Pistol Music Hall**

It's Saturday night and the wildest honky tonk party this side of the Chattahoochee is happening at Tiny's Big Tavern. There's no stopping the action until last call, so belly up to the bar as we order up a round of the hottest honky tonkin' hits ever served.

31 **Mariner's Cove**

A pirate parody of preposterous proportions! The captain and his first mate swear to protect the secret of "the lost treasure of Spanish Main". But loose lips sink ships and when Patch-eye Pete, the scurviest pirate to sail the Seven Seas catches wind of the scuttlebutt, this plunder-headed pair of Jolly Rogers must swash and buckle to protect their golden booty.



LICKSKILLET & COTTON STATES

56 **Lickskillet Stage**

Help out the town marshal as he follows a trail of juvenile jokes, painful puns, and silly slapstick in search of that notorious criminal, Bad Bob. If only his dumb deputy would quit trying to help, he might just have a chance.

74 **Southern Star Amphitheater®**

Various concerts throughout the season.

SPANISH SECTION

26 **Bugs Bunny World Theatre**

Bugs Bunny and his *Looney Tunes* pals have formed a band and are ready to take the world by storm. This ensemble has all the essentials to become one of the greatest bands of all time, if they could only decide on a musical style!

CHARACTER APPEARANCES

Meet *Bugs Bunny* and his *Looney Tunes* friends before each show throughout the park. Also, be sure to catch them at *Bugs Bunny World* throughout the day. Show schedules are available at any retail location.



Dining

GOTHAM CITY & USA SECTIONS

- 84 **Daddy O's**—Settle down at the park's newest restaurant with some classic Southern favorites like ribs, chicken, pulled pork, all your favorite fixin's and dessert.
- 88 **DeeJays Diner**® —Your favorite '50s diner just got better. Burgers, fries, onion rings, chicken tenders milkshakes and more, make this a hot spot for lunch.
- 103 **Gotham City Eatery**— Enjoy regular, tangy BBQ and buffalo chicken tenders baskets.

FRENCH & CONFEDERATE SECTIONS

- 17 **Miss Dixie's Depot**—Stop by for turkey legs, delicious BBQ, 1/4 lb. hamburgers, fries, and onion rings.
- 22 **Panda Express**—Enjoy tempting tastes like beef with broccoli, crisp veggies, and everyone's favorite...orange flavored chicken - a Panda Express original. Our flavors are ready to go - hot, fresh and fast.
- 35 **Plantation House**—Fried chicken tenders, regular and spicy, served with all the trimmings. Salads, kids meals and an assortment of desserts are also available.
- 38 **NEW JERRY'S** —That's right... the ice cream! Stop by for some of your favorite flavors.
- 39 **El Jalepeño Jr.**—Stop in for a siesta and some authentic Mexican favorites served fresh daily.
- 45 **Pizzeria**—Pizza by the slice with cheese or pepperoni

LICKSKILLET & COTTON STATES SECTIONS

- 46 **Country Cousins**—Fresh squeezed lemonade, cotton candy and snow cones.
- 52 **Funnel Cakes**—Funnel cakes made fresh and topped with powdered sugar or assorted toppings. Try a delicious waffle cone filled with soft serve ice cream.



- 54 **Miner's Cookhouse**™—Seasoned grilled burgers and BBQ pork sandwiches with all the trimmings.
- 60 **Nawlin's Snowballs**—The original New Orleans frozen treat, in all of your favorite flavors.
- 62 **The Hickory Chip**—Turkey leg baskets and nachos.
- 63 **Picnic Pavilions**—Reserved for group outings of 100 or more; offers catered picnics with a variety of all-you-can-eat meals. For more information, contact Six Flags Over Georgia's Sales Department at (770)948-9290, Mon.-Fri. 9:00 a.m.-5:00 p.m.
- 66 **Cotton States Food Court**—Home of the "Super" foot long chili cheese dog basket or fried chicken tenders basket, Dippin' Dots and ICEE.

SPANISH SECTION

- 28 **The Carrot Club**®—Guaranteed to satisfy adults and children alike, the Carrot Club serves fresh pizza by the slice and Southern fried chicken tenders - All served with french fries.

BRITISH & GEORGIA SECTIONS

- 2 **NEW JERRY'S** —Is there anything better than ice cream? Stop by for some of your favorite flavors.
- 3 **Old South Confectionery**—Funnel cakes with assorted toppings and delicious waffle cones filled with soft serve ice cream.
- 14 **Tondee's Tavern**—Philly and Chicken hoagies cooked fresh to order.

THE PROMENADE

- 8 **Promenade Pizza Place**—Pizza by the slice, garden fresh salads, salads, hot and cold submarine sandwiches, coffee, cappuccino, and desserts.

Shopping

THE PROMENADE

- 1** **Looney Tunes Exposition**—Look for Bugs Bunny, Tweety, and Taz in this Old South location. There's the Plush Bayou, Granny's Parlor, and Tweety's Conservatory, each packed with your favorite Looney Tunes souvenirs.
- 7** **Six Flags Marketplace**—Find all of your park supplies and souvenirs. Featuring value priced souvenirs, a large children's section and all of your favorite ride gear. A must see for all park Guests.

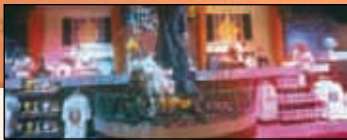
Purchase glow items nightly when open after dark in this area.

BRITISH & GEORGIA SECTIONS

- 6** **Scorcher Cart and SF Photo Too**—Hats, jewelry, and other park necessities. Also, get your park entrance photo here!
- 9** **Fast Lane**—Six Flags' version of virtual line queuing. Enjoy other park attractions as you wait the same amount of time, but don't stand in the actual line. The Fast Lane electronic pager will tell you when your ride is ready. A nominal fee is required, and availability is limited.
- 10** **Cyclone Photos**—Georgia Cyclone ride photos.
- 11** **Six Flags Photo**—Pick up your favorite photo of your visit to Six Flags upon entering The Promenade area.
- 12** **Piccadilly Sweets**—Fudge and fresh baked cookies, as well as candy and drinks.

GOTHAM CITY & USA SECTIONS

- 36** **Caricature Photos**
- 37** **Attitudes**—The hottest and latest goods and gear for teens!



- 39** **Name Rings and Rice Necklace**—Personalized jewelry for young and old.
- 100** **Big Top**—DC Comics souvenirs and novelties.
- 85** **GOLIATH Gifts**—Large assortment of GOLIATH souvenirs and gifts.
- 31** **GOLIATH Photography**—Prove you actually conquered GOLIATH with your souvenir ride photo.

FRENCH & CONFEDERATE SECTIONS

- 19** **Antique Photos and Confederate Hats**—Old time photos in costume and novelty headwear.
- 20** **Six Flags Kids**—Everything for our smallest Guests.
- 21** **Cartoon Candy Kitchen**—Give in to your sweet tooth and pick up some great novelty items too.
- 25** **Cuddly Country**—Lovable critters from cartoons, as well as Ty and assorted stuffed animals. Also, Airbrush Tees and Caricatures next door.
- 34** **N.B. Tween**—Clothing, accessories, and essentials for our growin' and stylin' 'tweenagers.
- 37** **Six Flags Gifts**—Everything that you need to experience and remember the park.
- 42** **Airbrush Shop**—Airbrush T-shirts, caps, and license plates.
- 44** **Georgia Name Factory**—Personalized plaques, tags, and apparel.

LICKSKILLET & COTTON STATES SECTIONS

- 53** **Six Flags Mercantile**—Looney Tunes, park souvenirs, and general store items for everyone.
- 55** **Beary Good Creations**—Stuff your beary own teddy bear.
- 59** **Bullock and Tatum's**—Fudge and fresh baked cookies, as well as candy and drinks.
- 72** **Daily Planet Gifts**—A selection of Superman gifts and souvenirs, as well as photos from Superman—Ultimate Flight.
- 79** **Scalawags**—Towels, Tees, and anything you need to enjoy Skull Island and have fun in the sun.

Rides, Games & Attract

GOTHAM CITY

- 96 **Gotham City Crime Wave**—(48") Fly over 40 feet in the air on this breathtaking family attraction.
- 97 **Mind Bender**® (42")—The world's first triple-loop roller coaster. **Q**
- 98 **The Joker's Game Land**—Newest games of skill from *The Joker*. Winners can take home stuffed animals and other great prizes.
- 101 **Rock Wall**—Try your hand climbing this sheer cliff. There is a nominal charge for this attraction.
- 102 **Batman The Ride** (54")—Ski lift style trains suspended from the track above while riders fly at intense speeds, with nothing but air below their dangling feet. **Q**

USA

- 80 **GOLIATH** (54")—NEW! Standing over 200-feet tall and approaching speeds of up to 70 m.p.h., GOLIATH is a giant among coasters. With no loops, but lots of airtime, this hyper-coaster travels outside of the park and back. **Q**
- 82 **USA Games Area**—Challenge your talents at numerous games of skill. Winners can take home stuffed animals and other fantastic prizes.
- 90 **USA Arcade**—Test your wits on some of the most popular coin operated video arcade games.
- 91 **Extreme Motion Theater**—Enter this 10-seat theater where nothing is as it seems. This attraction is subject to a nominal fee.



- 92 **Fearman's Manor**—Navigate over two dozen rooms of ghosts and goblins in this haunted house... if you dare! There is a nominal charge for this attraction.
- 93 **Free Fall** (42")—Re-creates the sensation of falling off a 10-story building.
- 94 **Shake, Rattle & Roll** (42")—Spin your way through this 50's-themed, indoor ride. **Q**
- 36 **Monster Plantation**®—Boats journey through a land of animated, loveable monsters. **Q**
- 40 **Rabun Gap Railroad Station**—Train tours around the park. Train departs the station every 15 minutes.
- 43 **Metro Arcade**—Try several different Virtual Reality experiences, all in one location! This attraction is subject to a nominal charge.

CONFEDERATE

- 15 **Acrophobia** (52")—High Altitude Attitude—this amazing Gyro Drop defies the laws of gravity **Q**.
- 16 **Marthasville Railroad Station**—Train tours around the park. Train departs the station every 15 minutes.
- 18 **Dahlongega Mine Train** (42")—Roller coasters of a runaway gold mine train.
- 23 **Confederate Sky Buckets**—Cable cars that offer a quick trip to the LickSkillet section of the park.

ions

LICKSKILLET

- 30 **Splash Water Falls**® (36")—A water adventure that transports 20-passenger boats over a 50-foot waterfall.
- 47 **Thunder River**® (36")—White water-rafting adventure through roaring rapids. **Q**
- 48 **Go-Karts** (58" to drive plus 18 years old to drive with passenger 40" or greater)—Get behind the wheel and race against family and friends. Available in single or double Go-Kart racers. There is a nominal charge for this attraction.
- 49 **Déjà Vú** (54")— Super Boomerang Coaster, twice the thrill in just one ride! **Q**
- 50 **Lickskillet Sky Buckets**—Cable cars that provide a relaxing journey to the Confederate Section.
- 51 **Lickskillet Games**—Test your skill at this game location! Winners can take home stuffed animals and other great prizes.
- 57 **Pool Hall Game**
- 61 **Wheelie** (42")—Gondolas rotate to high speeds then lift to a vertical position.

COTTON STATES

- 64 **Ladder Climb**—Climb the ladder to the top to ring the bell and win a prize! There is a nominal charge for this attraction. See rules at location.
- 65 **NINJA**® (48")— The Black Belt of Roller Coasters®! This steel coaster turns upside down five times with upward spirals and corkscrew dives. **Q**
- 67 **Dodge City Bumper Cars** (42")—Demolition style motor cars. **Q**
- 68 **SUPERMAN—ULTIMATE FLIGHT** (54")—The South's only flying roller coaster transforms mere mortals into high flying heroes, diving head first through tortuously twisted turns and a pretzel shaped inverted loop. **Q**
- 69 **Cotton States Games**—Numerous games of skill. Winners can take home stuffed animals and other great prizes.
- 70 **The Great American Scream Machine**® (42")—One of the world's longest and tallest wooden roller coasters. **Q**
- 71 **Fearless Freeps Dare Devil Dive**—This attraction hoists flyers to a launch height of over 100 feet. This attraction is subject to a nominal charge.



- 73 **Skull Island**— Bring a towel and a bathing suit to navigate this enormous interactive play fortress. Changing facilities available.
- 75 **The RiverView Carousel**—A true nostalgic ride from days gone by and Six Flags' contribution to the National Register of Historic Places.
- 76 **Rockin' Tug** (42")—Kids and families can enjoy this boating adventure without getting wet.
- 77 **Up, Up & Away** (36")—This lofty attraction lifts families high in the air on four-person gondolas.
- 78 **Hanson Cars**—Easy-paced cars resembling early roadsters. Min. 2 passengers per car.

GEORGIA

- 4 **The Georgia Scorcher**® (54")— Riders STAND not sit as they race head-over-heels across looping inverted steel track. **Q**
- 5 **Log Flume**—Watery ride of rapids and waterfalls reminiscent of Georgia's early logging camps. No lap children.

BRITISH

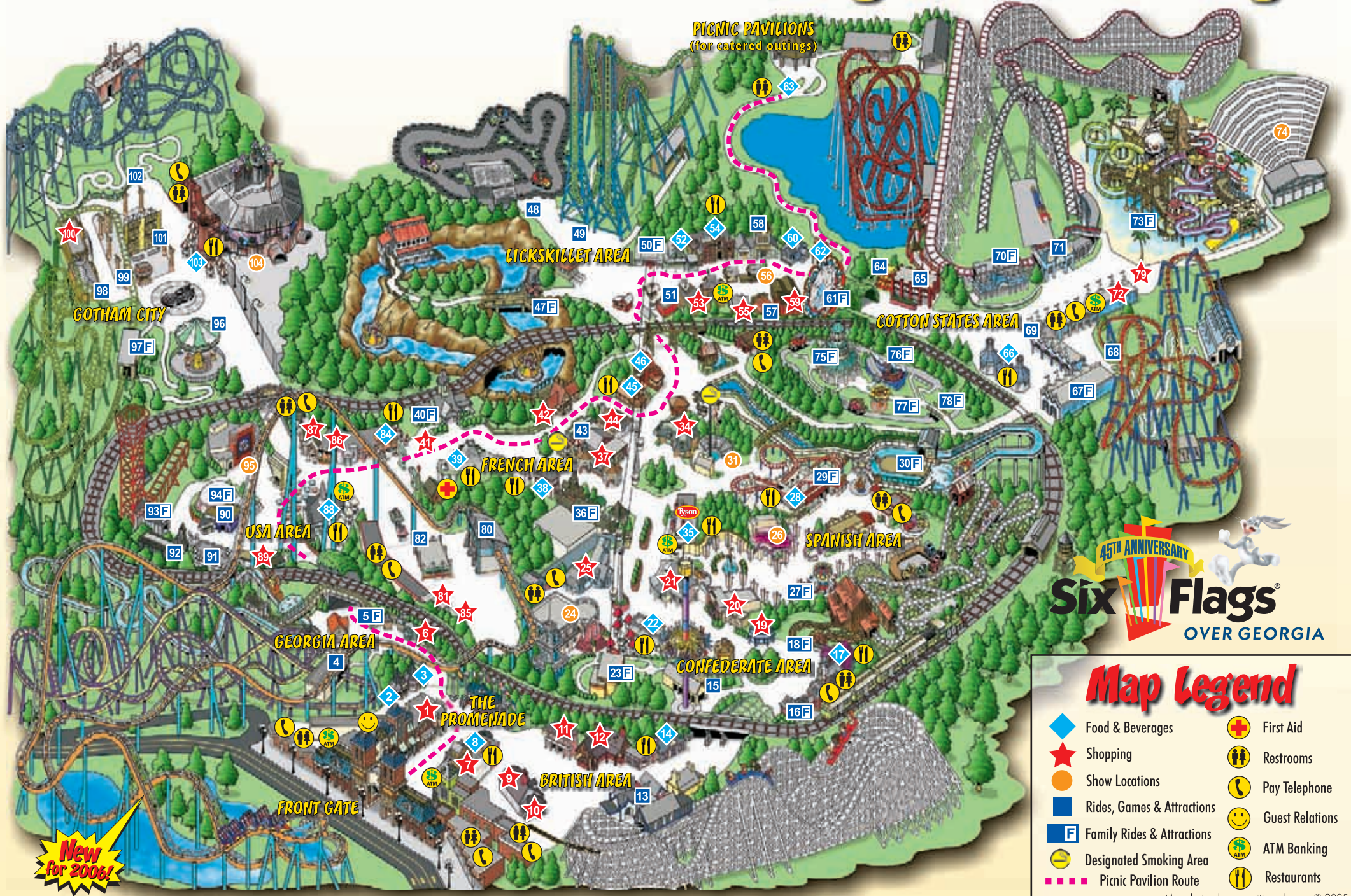
- 13 **Georgia Cyclone**® (48")—A wooden roller coaster with a series of drops, high speed banks and turns. **Q**

SPANISH

- 27 **Bugs Bunny's World** (54" maximum)—An entire section of rides created especially for children. Favorite attractions include: Convoy Grande, Tweety's Clubhouse, Swing Seville and the Little Aviator.
- 29 **Wile E. Coyote Canyon Blaster** (36") — Our newest family roller coaster spans over 900 feet racing in and around Bugs Bunny World! **Q**

*Rides accessible with the Fast Lane system are noted with a **Q**.*

Your Guide to FUN at Six Flags Over Georgia!



Map Legend

	Food & Beverages		First Aid
	Shopping		Restrooms
	Show Locations		Pay Telephone
	Rides, Games & Attractions		Guest Relations
	Family Rides & Attractions		ATM Banking
	Designated Smoking Area		Restaurants
	Picnic Pavilion Route		

New for 2006!