

# Churches



The following churches in Edinburgh have been given official fairtrade status from the Fairtrade Foundation. To become a fairtrade church you have to satisfy three criteria:

- **Use fair trade tea and coffee for all meetings for which you have responsibility**
- **Move forward on using other fair trade products (such as sugar, biscuits and fruit)**
- **Promote fair trade during Fairtrade Fortnight and through other activities whenever possible.**

**South Leith Parish Church**  
**Sacred Heart of Jesus RC Church**  
**Murrayfield Parish Church**  
**St Columba's RC Church**  
**St John Ogilvie's RC Church**  
**St Joseph's RC Church**  
**Emmanuel Scottish Episcopal Church**  
**Mayfield Salisbury Parish Church**  
**St James' Scottish Episcopal Church**  
**St John the Baptist RC Church**  
**The Church of The Good Shepherd**  
**Pilrig St Paul's Church**  
**St Cuthbert's RC Church**  
**Inverleith Church of Scotland**  
**St. Mary's RC Cathedral**  
**Southleith Parish Church**  
**St. Columba's-by-the-Castle Episcopal Church**  
**Leith St. Andrew's Church of Scotland**  
**Wardie Parish Church**  
**St Mary's Star of the Sea RC Church**  
**Duddingston Kirk**  
**Augustine United Church**  
**St. Teresa's RC Church**  
**Leith Methodist Church**  
**St Ninian's RC Church**



The following churches also support fairtrade by selling fair trade goods at their stalls and serving tea and coffee after services but have not as yet received fairtrade church status from the Fairtrade Foundation.

**St Anne's Corstorphine**  
**St Margaret's**  
**St Giles Marchmont**  
**Methodist Mission**  
**St Peter's Lutton Place**  
**Quaker House**  
**Craigsbank Church**  
**Liberton Kirk**  
**Greenside Parish Church**  
**St Martin's Episcopal Church**  
**St Mark's Unitarian Church**  
**St Fillan's**  
**St John's West End**  
**Craiglockhart Church**  
**Balerno Parish Church**  
**Morningside United Church**





## Fair trade on-line

<b>Epona</b>	<a href="http://www.eponasport.com">www.eponasport.com</a>
<b>Tearfund</b>	<a href="http://www.tearfund.org">www.tearfund.org</a>
<b>Traidcraft</b>	<a href="http://www.traidcraft.co.uk">www.traidcraft.co.uk</a>
<b>Ganesha</b>	<a href="http://www.ganesha.co.uk">www.ganesha.co.uk</a>
<b>Gossypium</b>	<a href="http://www.gossypium.co.uk">www.gossypium.co.uk</a>
<b>Hug</b>	<a href="http://www.hug.co.uk">www.hug.co.uk</a>
<b>Trade Plus Aid</b>	<a href="http://www.tradeplusaid.com">www.tradeplusaid.com</a>
<b>People Tree</b>	<a href="http://www.peopletree.co.uk">www.peopletree.co.uk</a>
<b>Ethical Shopper</b>	<a href="http://www.ethicalshopper.co.uk">www.ethicalshopper.co.uk</a>
<b>Ethical Threads</b>	<a href="http://www.ethicalthreads.co.uk">www.ethicalthreads.co.uk</a>
<b>Fairmade Cards</b>	<a href="http://www.fairmade.biz">www.fairmade.biz</a>
<b>Fair Trade On-line</b>	<a href="http://www.store.yahoo.com/fairtradeonline-uk">www.store.yahoo.com/fairtradeonline-uk</a>
<b>Fair Trade Wear</b>	<a href="http://www.ftwear.com">www.ftwear.com</a>
<b>Goodness Direct</b>	<a href="http://www.goodnessdirect.co.uk">www.goodnessdirect.co.uk</a>
<b>Tropical Wholefoods</b>	<a href="http://www.fmfoods.co.uk/shop.htm">www.fmfoods.co.uk/shop.htm</a>
<b>Union Coffee Roasters</b>	<a href="http://www.shop.unionroasters.com/cgi-bin/unionroasters">www.shop.unionroasters.com/cgi-bin/unionroasters</a>
<b>Concepts of Peru</b>	<a href="http://www.conceptsofperu.co.uk">www.conceptsofperu.co.uk</a>
<b>One World is Enough</b>	<a href="http://www.one-world-is-enough.net">www.one-world-is-enough.net</a>
<b>Paper High</b>	<a href="http://www.paperhigh.com">www.paperhigh.com</a>
<b>Silverchilli</b>	<a href="http://www.silverchilli.com">www.silverchilli.com</a>
<b>Simply Fair</b>	<a href="http://www.simplyfair.co.uk">www.simplyfair.co.uk</a>
<b>Tumi</b>	<a href="http://www.tumi.co.uk">www.tumi.co.uk</a>

## Roseburn Primary School

Fair trade is one of the topics included in the global citizenship and Religious and Modern Education (RME) curriculum of the school. The pupils enjoy simulation games in which they represent Ghanaian producers of cocoa, bananas, pineapples and crafts. The producers then trade to enable them to provide amenities for their village. The pupils discuss the priorities of their village and then choose to purchase either a water supply or a teacher or a nurse or a road system. Much is dependent on the fairness of trading and the pupils quickly become aware of the advantages of fair trade and working co-operatively.

Roseburn Primary School has a link with a school in the cocoa-growing area of Ghana and P4 pupils study fair trade focussing on chocolate using the Pa Pa Pa materials. Dressed in Ghanaian costumes, the pupils presented to parents the story 'from bean to bar' and held a poetry competition about fair trade chocolate during One World Week. Pupils from the middle school organise and run a fair trade stall during the school fairs.

Marcia Rankine, a class teacher who has visited the partner schools in Ghana, said: "The study of fair trade has helped the children to understand trade and especially fair trade and consequently they encourage their parents to buy fairly traded goods."

[www.roseburn.edin.sch.uk](http://www.roseburn.edin.sch.uk)





### Fair trade schools:

There are three steps to becoming a fair trade school:

- ✓ **Make fair trade foods available to staff and students**
- ✓ **Present an assembly or lesson on fair trade**
- ✓ **Set up a fair trade tuck shop selling fair trade chocolate, bananas and snack bars**

Find out more at:

[www.fairtrade.org.uk/get\\_involved\\_school.htm](http://www.fairtrade.org.uk/get_involved_school.htm)

# Schools



### Currie Community High School



In 2004 Currie Community High School (CCHS) formed a partnership with Chogoria Girls High School in Meru South district, Kenya. CCHS is a Green Flag Eco School and Chogoria GHS has also entered the programme in Kenya. Several staff and two pupils from each school have exchanged visits and brought back accounts of their experiences to share with and inspire the school community.

Pupils in CCHS have chosen to raise funds through enterprise activities, for several schools in Meru South district and to sponsor a pupil each year. This decision carries a long-term responsibility and the school has made this commitment on behalf of pupils currently attending the school and those in the future. During Fairtrade Fortnight the school plan to sell fair trade food products and handbags that have been made by a women's co-operative in Chogoria.

This year the school will be working with the charity Vetaid, one of the official charities for 'Cow Parade', an international public art event to be hosted in Edinburgh this year. Art and Design pupils will illustrate a fibreglass cow with aspects of subsistence farming.

The experience of forming a partnership with Chogoria Girls High School has been very positive. The 'live' contact between the schools and pupil exchanges has brought to life many issues that affect the developing world. The partnership is based on exchange: learning about and from each other. It is a long-term commitment and an enriching one for both schools.

**Vetaid**  
**Cow Parade**

[www.vetaid.org](http://www.vetaid.org)  
<http://edinburgh.cowparade.com>

## Edinburgh University Student Association restaurants, cafés, bars

Outlet	Products	Opening hours
<b>David Hume Tower</b> Edinburgh University The Refectory, George Square EH8 9LJ 0131 650 3866	W M	During term time Mon-Tues, Thurs, Fri 8.45am-5pm Wed 8.45am-2.30pm
<b>Main Library</b> Edinburgh University 30 George Square EH8 9LJ 0131 650 3421	W M	During term time Mon-Thurs 10am-9pm Fri 10am-6pm Sat, Sun 10am-4pm
<b>Dick Vet School</b> Edinburgh University Summerhall EH9 1QH 0131 650 6090	W M	During term time Mon-Fri 10am-2.30pm
<b>Old College Carry Out</b> Edinburgh University South Bridge EH8 9YL 0131 650 8038	W M	During term time Mon-Fri 10am-2.30pm
<b>New College</b> Edinburgh University Mound Place EH1 2LX 0131 650 8911	W M	During term time Mon-Fri 9am-5pm
<b>James Clerk Maxwell Building</b> Edinburgh University, Kings Buildings Mayfield Road EH9 3JZ 0131 650 8623	W M	During term time Mon-Fri 8.30am-4.30pm



# Outlets

Outlet	Products	Opening hours
<b>Teviot Row House</b> Edinburgh University 13 Bristo Square EH8 9AJ 0131 650 4673	W M	During term time Mon-Fri 8.30am-6pm
<b>Kings Buildings House</b> Edinburgh University 2 West Mains Road EH9 3SF 0131 650 5770	W M	During term time Mon-Fri 8.30am-6pm
<b>Potterrow</b> Edinburgh University Bristo Square EH8 9AL 0131 650 8091	W M	During term time Mon-Fri 9am-5pm
<b>The Pleasance</b> Edinburgh University 60 The Pleasance EH8 9TJ 0131 650 2349	W M	During term time Mon-Fri 10am-6pm
<b>Old College Playfair Library</b> Edinburgh University South Bridge EH8 9YL 0131 650 2087	W M	Open for pre-booked functions only





EDINBURGH  
**ZOO**



is really  
**WILD**  
for fair  
trade  
Products

[www.edinburghzoo.org.uk](http://www.edinburghzoo.org.uk)

Visit our  
website for our  
Organic, Fairtrade  
Promotions on  
[www.greencity.co.uk](http://www.greencity.co.uk)



Organic

Over 3000 products



Fairtrade



GM Free



Ethical



WORKERS' CO-OPERATIVE

Green City Wholefoods is a non-exploitative workplace  
which takes into consideration the interests of workers.

the community and the environment as a whole.

WHOLESALE SINCE 1978



[www.greencity.co.uk](http://www.greencity.co.uk)

# Listings

## Are you listed in this guide?

Help us keep this guide up to date. With the number of fair trade outlets across the city increasing all the time it is important for the retailer and the customer to keep our guide up to date.

If you run a supermarket, restaurant, café or shop in Edinburgh and sell fair trade products please let us know and we will include your details in the next edition of this guide.

Log on to [www.edinburgh.gov.uk/fairtrade](http://www.edinburgh.gov.uk/fairtrade) and complete the form under 'Fairtrade Outlets'. In the mean time your listing will be included on the web site.

## Making fair trade your habit

If you have read this guide and wonder what you can do to make a difference, read on...

- Ask for fair trade products in your workplace, favourite café, restaurant and bar. Look out for the FAIRTRADE Mark on cotton clothes.
- Give fair trade flowers, chocolates or wine to someone you love.
- Relax at the end of the day with a cup of fair trade coffee or a glass of fair trade wine.
- If your local supermarket or shop doesn't stock the fair trade product you're looking for, ask the manager.
- Sign up to receive the Fairtrade Foundation's newsletter 'Fair Comment' on [www.fairtrade.org.uk](http://www.fairtrade.org.uk) and get up to date information on new fair trade products.

# ENJOYED THIS GUIDE?

If you've enjoyed this special guide to Fairtrade, you are sure to love **new consumer** too, the UK's fair trade and ethical lifestyle magazine.



Passionate, irreverent, positive, **new consumer** provides inspiration, information, products and ways to make a difference to you and the world.



SUBSCRIBERS GET 10% OFF ALL PRODUCTS AT  
[WWW.NEWCONSUMERSHOP.ORG](http://WWW.NEWCONSUMERSHOP.ORG)



- Yes, I'd like to subscribe to new consumer magazine.
- £15 for a paper subscription (5 issues a year)
- £30 for a lifestyle subscription (5 issues plus a selection of ethical goodies) (see website for details)

I enclose a cheque for £.....  Please charge my credit card the amount of £.....

Name: ..... Recipient's name: (if different) .....

Delivery address: .....

Postcode: .....

Telephone: ..... Email address: ..... (please use your e-mail address)

Type of Credit Card: Visa / Debit / Maestro / MasterCard / Other .....

Credit Card Number: ..... Start Date: ..... Expiry Date: .....

Please return to: **FREEPOST RLYZ - JARJ - LUKT, New Consumer, 51 Timberbush, Edinburgh, EH6 6QH**

Call our **subscription hotline** for more info: **0131 561 1798**

visit [www.newconsumer.org](http://www.newconsumer.org) or [www.newconsumershop.org](http://www.newconsumershop.org)



# Outlets

## University shop outlets

Outlet	Products	Opening hours
<b>Potterrow Shop</b> Edinburgh University Bristo Square EH8 9AL 0131 650 9227	f m	During term time 9am-6pm
<b>David Hume Tower Shop</b> Edinburgh University George Square EH8 9LJ 0131 650 3865	f m	During term time 9am-5pm
<b>Kings Buildings Shop</b> Edinburgh University 2 West Mains Road EH9 3SF 0131 650 7428	f m	During term time 8.30am-5pm
<b>Pollock Halls Shop</b> Edinburgh University 18 Holyrood Park Road EH16 5AY 0131 651 2091	f m	During term time 8am-10pm



## University catering outlets

<b>The Spot, Kings Buildings</b> Edinburgh University 2 West Mains Road EH9 3SF 0131 651 7158	f m w	Mon-Fri 8.30am-3.30pm
<b>Upstairs Café, Kings Buildings</b> Edinburgh University 2 West Mains Road EH9 3SF 0131 650 7120	f m w	Mon-Fri 8.30am-4.30pm

## Chapters Restaurant, Moray House

Edinburgh University  
Holyrood Road EH8 8AQ  
0131 651 6101

## Absorb Café Bar, Pollock Halls

Edinburgh University  
18 Holyrood Park Road EH16 5AY  
0131 651 2141

## Edinburgh First Fine Dining Pollock Halls

Edinburgh University  
18 Holyrood Park Road EH16 5AY  
0131 651 2189

Outlet	Products	Opening hours
<b>Chapters Restaurant, Moray House</b>	f m w	Mon-Fri 8.30am-4pm
<b>Absorb Café Bar, Pollock Halls</b>	f m w	Sun-Sat 11am-11pm
<b>Edinburgh First Fine Dining Pollock Halls</b>	f	Conference and Events Facilities

## Fair trade universities

In Scotland both the University of Edinburgh and University of Glasgow have achieved Fairtrade University status. To become a Fairtrade University or College five goals must be met:

- 1. The Student Union (SU) and the university authorities both create a fair trade policy incorporating these five goals.**
- 2. Fair trade foods are made available for sale in all campus shops and are used in all cafés/restaurants/bars. Where this is not possible, there is a commitment to begin to use fair trade foods in these establishments as soon as it becomes possible to do so.**
- 3. Fair trade foods (for example, coffee and tea) are served at all meetings hosted by the university and the SU, and are served in all university and SU management offices.**
- 4. There is a commitment to campaign for increased fair trade consumption on campus.**
- 5. Set up a fair trade steering group.**

Useful links

**Oxfam guide:** [www.fairtrade.org.uk/downloads/pdf/students\\_guide.pdf](http://www.fairtrade.org.uk/downloads/pdf/students_guide.pdf) **University of Edinburgh:** [www.ed.ac.uk/news/fairtrade.html](http://www.ed.ac.uk/news/fairtrade.html)

# 5goals

## Theatres

Outlet	Products	Opening hours
<b>Bedlam Theatre</b> 11b Bristo Place EH1 1EZ 0131 225 9873	f w	When shows are on
<b>Royal Lyceum Theatre</b> 30b Grindlay Street EH3 9AX 0131 248 4848	f	When shows are on
<b>Edinburgh Playhouse</b> 18-22 Greenside Place EH1 3AA 0131 524 3333	f w m	When shows are on

## Cafés, restaurants, bars

<b>Always Sunday</b> 170 High Street EH1 1QS 0131 622 0667	f	Mon-Fri 8am-6pm Sat-Sun 9am-6pm
<b>AMT Coffee Stall</b> Haymarket Station	f	Mon-Thurs 6am-9pm Fri-Sat 7am-10pm Sun 9am-9pm
<b>Beanscene</b> 67 Holyrood Road EH8 8AU 0131 557 6549	f	Mon-Sat 8am-8pm Sun 10am-8pm
<b>Bellstane Café Bar and Gift Shop</b> 45/46 High Street South Queensferry EH30 9HN 0131 331 3306	f m	Mon-Fri 9.30am-5pm Sat-Sun 10am-5pm



# Outlets

Outlet	Products	Opening hours
<b>Café@68</b> 68 Haymarket Terrace EH12 5LQ 0131 4674671	f w i m	Mon-Fri 8.30am-4.30pm
<b>Café North</b> North Edinburgh Arts Centre 15a Pennywell Court EH4 4TZ 0131 315 2151	f w	Tues-Sat 10am-3pm
<b>Café Camino</b> St. Mary's Cathedral Broughton Street EH1 3JR	f w	Mon-Fri 8am-5pm Sat 8.30am-5pm Sun 8.30-4.30pm
<b>Café Knight</b> 18 Bridge Road, Colinton EH13 0LQ 0131 441 7510	f	Mon-Sat 9am-5pm
<b>Café Royal Bistro Bar</b> 17 West Register Street EH2 2AA 0131 556 1884	f w	Mon-Wed, Fri 11am-10pm Thurs 11am-midnight Sat 11am-1am Sun 12.30pm-11pm
<b>Coffee etc</b> 4 Chapel Street EH8 9AY 0131 667 8299	f	Mon-Sat 9.30am-6pm
<b>Cornerstone Café</b> St John's Church Princes Street EH2 4BJ 0131 229 0212	f	Mon-Sat 9.30am-4pm
<b>Costa Coffee</b> Edinburgh Airport EH12 9DN 0131 333 2701	f	Mon-Fri 5am-8pm Sat-Sun 6am-6pm





# Outlets

## Cafés, restaurants, bars

Outlet	Products	Opening hours	Outlet	Products	Opening hours
<b>Costa Coffee</b> Princes Mall, Princes Street EH1 1BQ 0131 558 7766	f	Mon-Sat 8.30am-7pm Sun 11am-5pm	<b>Embo</b> 29 Haddington Place EH7 4AG 0131 652 3880	f m	Mon-Fri 8am-4pm Sat 9am-4.30pm
<b>Costa Coffee</b> 1 Hanover Street EH2 2DL 0131 226 4814	f	Mon-Sat 7.30am-6.30pm Sun 10am-6pm	<b>Fair Trade Café (University)</b> Catholic Chaplaincy, George Square 0131 650 0900	f m	During term time only Fri 12noon-2pm
<b>Costa Coffee</b> Waverley Train Station EH1 1BD 0131 556 0204	f	Mon-Sat 6am-10 pm Sun 7.30am-8.30pm Sat 6am-10pm Sun 7.30am-8.30pm	<b>Fenwicks Restaurant</b> 15 Salisbury Place EH2 9DB 0131 667 4265	f	Mon-Sun Lunch 12noon-2pm Dinner 6pm onwards
<b>Cuba Norte</b> 192 Morrison Street EH3 8EB 0131 221 0499	f	Sun-Thurs 12noon-12midnight Fri-Sat 12noon-1am	<b>Filmhouse Trading Ltd</b> 88 Lothian Road EH3 9BE 0131 229 5932	f	Sun-Thurs 10am-11.30pm Fri-Sat 10am-12.30pm
<b>Dash Coffee</b> Festival Square Lothian Road 0131 557 3709	f	Mon-Fri 8am-6pm Sat 10.30am-5.30pm	<b>Fool</b> 308 Morningside Road EH10 4QH 0131 447 1040	b	Mon-Sat 10.30am-5.30pm
<b>Ecco Vino</b> 19 Cockburn Street EH1 1BP 0131 225 1441	f w	Sun-Thurs 12noon-12midnight Fri-Sat 12noon-1am	<b>Forest Café</b> 3 Bristo Place EH1 1EY. 0131 220 4538	f	Mon-Sun 12noon-late
<b>Elephants &amp; Bagels</b> 37 Marshall Street (Nicholson Square) EH8 9BJ 0131 668 4404	f	Mon-Fri 8am-6pm Sat-Sun 10am-7pm	<b>Good Food</b> 255 Morningside Road EH10 4RD 0131 452 9020	f m w	Mon-Fri 9am-5.30pm Sat 9am-5pm
<b>The Elephant House</b> George IV Bridge EH1 1EN 0131 220 5355	f	Mon-Fri 8am-11pm Sat-Sun 10am-11pm	<b>Harlequin Café</b> 30 Buccleuch Street EH8 9LP. 0131 667 5482	f	Mon-Fri 11.30am-7pm
			<b>Henderson's Salad Table</b> 104 Hanover Street EH2 1DR. 0131 225 2131	f	Mon-Sat 7.30am-11pm

## Cafés, restaurants, bars



# Outlets

Outlet	Products	Opening hours	Outlet	Products	Opening hours
<b>Inter.net 1</b> 169 Leith Walk EH6 5NR 0131 554 4552	f	Mon-Sat 9.30am-10pm Sun 11.30am-10pm	<b>Ndebele</b> 57 Home Street EH3 9JP 0131 221 1141	f	Daily 10am-10pm
<b>Inter.net 2</b> 60 Clerk Street, North Bridge EH8 9JB 0131 466 5332	f	Mon-Sat 10am-10pm Sun 11am-10pm	<b>Olive Tree Café</b> St. George's West Church 58 Shandwick Place EH2 4RT 0131 225 7001	f	Mon-Fri 10am-4pm Sat 10am-3pm
<b>Marks &amp; Spencer</b> Café Revive, 54 Princes Street EH2 2DQ 0131 225 2301	f	Daily 9am-5 pm	<b>Sala Café Bar</b> 60 Broughton Street EH1 3SA 0131 478 7069	f w	Tues-Thurs 11am-12pm Fri-Sat 11am-1am Sunday 10.30am-11.30pm
<b>Marks &amp; Spencer</b> Café Revive, 91 Princes Street EH2 0131 225 2301	f	Daily 9am-5 pm	<b>Sandwich Stack</b> 44 Earl Grey Street EH3 9BN 0131 659 7877	f w m	Daily 8.30am-3.30pm
<b>Marks &amp; Spencer</b> Café Revive, The Gyle EH12 9SJ 0131 317 1333	f	Daily 9am-9pm	<b>Sandwich Stack</b> 63 Holyrood Road EH8 8AU 0131 557 5722	f w m	Daily 8.00am-3.30pm
<b>Marks &amp; Spencer</b> Café Revive, Ocean Terminal EH6 6JJ 0131 225 2301	f	Daily 9am-5pm	<b>The Bongo Club Ltd</b> 37 Holyrood Road EH8 8BA 0131 558 7604	f w	Mon-Fri 11am-7pm Sat-Sun 12.30pm-6pm
<b>Millars of Morningside</b> 414 Morningside Road EH10 5HY 0131 447 2468	f	Mon-Sat 10am-9pm	<b>The Honey Pot</b> 46 George IV Bridge EH1 1EJ 0131 226 3269	f i	Mon-Fri 8am-10.30am Sat-Sun 9.30am-10.30pm
<b>Morningside Deli</b> 396 Morningside Road EH10 5HX 0131 452 9410	f	Mon-Fri 8.30am-4.30pm Sat 9am-3.30pm	<b>The Lot Café/Bistro</b> 4 Grassmarket EH1 1EY 0131 225 9922	f w m	Mon-Sat 11am-late Sun 12pm-9pm



## Cafés, bars, restaurants

Outlet	Products	Opening hours
<b>The Thistle Foundation</b> Niddrie Mains Road EH16 4EA 0131 661 3366	f	Mon-Thurs 10.30am-2.30pm Sat 11am-2pm
<b>The 1924 Café and Card Shop</b> The Eric Liddell Centre 15 Morningside Road EH10 4DP 0131 446 3325	f	Mon-Fri 9.30am-5pm Sat 9.30am-4pm
<b>Undercroft Café</b> St Andrew's & St George's Church 13 George Street EH2 2PA 0131 225 3847	f w	Mon-Fri 12pm-2pm
<b>Urban Angel</b> 121 Hanover Street EH2 1DJ 0131 225 6215	f	Mon-Thur 10am-10pm Fri-Sat 10am-11pm Sun 10am-6pm
<b>Victor Hugo</b> 26/27 Melville Terrace EH9 1LP 0131 667 1827	f	Mon-Sat 8am-6pm

## Supermarkets

<b>Asda</b>	f w i m	www.asda.co.uk
<b>Morrisons</b>	f w i m	www.morrisons.co.uk
<b>Sainsburys</b>	f w i m	www.sainsburys.co.uk/home.htm
<b>Scotmid</b>	f w i m	www.scotmid.com
<b>Somerfield</b>	f w i m	www.somerfield.com
<b>Tesco</b>	f w i m	www.tesco.com



## Fair trade accommodation

<b>Glenora Hotel</b> 14 Rosebery Crescent EH12 5JY t 0131 337 1186 f 0131 337 1119 glenorahotel@aol.com	k	Offers fair trade and/or organic cooked breakfasts, complimentary fair trade tea, coffee, hot chocolate and sugar in guest bedrooms
<b>The Edinburgh Apartment</b> 5 Bath Street EH15 1EZ t 0131 669 3159 enquiry@the-edinburgh-apartment.com	k	Offers self-catering apartments. Tea, coffee, hot chocolate, sugar and orange juice provided as part of a breakfast hamper

## Fair trade wholesalers and caterers

<b>Equal Exchange</b> 10a Queensferry Street, Edinburgh EH2 4PG 0131 220 3484	<b>Café Ecosse</b> Dunvegan Business Centre, Cupar Road, Newburgh, Cupar, Fife KY14 6HA
<b>Matthew Algie</b> Wholesalers and Catering Suppliers 16 Lawmoor Road, Glasgow G5 OUL 0800 263333	<b>Green City Wholefoods</b> 23 Fleming Street, Dennistoun Glasgow G31 1PQ 0141 554 7633
<b>Edinburgh Tea and Coffee Co.</b> 15/G 214 Sir Harry Lauder Road Edinburgh EH15 2QA 0131 669 9222	<b>Suma Wholefoods</b> Unit AX1, Dean Clough Halifax HX3 5AN 0845 4582291
<b>Scottish Beverage Services</b> 5 Dalmahoy Road, Ratho EH28 8RE 0131 333 1129	<b>Juniper Fine Foods</b> Unit 2, Downs Way Ind Estate Heathhall, Dumfries DG1 3RS 01387 249 333

# Recipes

## Fair trade Tea Jelly

**This is delicious with cheese, cold meats or spread on hot, buttered crumpets or toast**

1 litre/2 pints water steeped in fair trade tea  
(use about 4 tea bags)  
6-8 cups of fair trade sugar  
cup apple pectin  
Juice of 1 fair trade lemons

Bring tea to the boil. Add the sugar, pectin, and lemon juice. Bring back to the boil and continue cooking for four minutes. Place in jars, cover with a piece of plastic wrap and allow to cool.

## Fair trade Banana and Toffee Pancakes

**By Hugh Fearnley Whittingstall. Serves 4-6**

*The Batter:*  
225g plain flour  
2 medium eggs  
up to 500ml milk

*The Filling:*  
250g good quality butter toffee  
(broken up if in a block)  
3 tablespoons milk  
10 ripe fair trade bananas, sliced

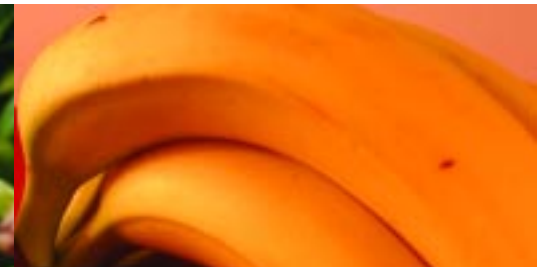
Sieve the flour and beat in the eggs. Beat in the milk a little at a time until the batter has the consistency of single cream.

Put the toffee and 3 tablespoons of milk in a heavy pan. Stir constantly over a low heat until the toffee has melted and the sauce is smooth. It should be nice and hot.

Fry the pancakes in a lightly oiled non-stick pan. When bubbles appear (after approx 1-1½ minutes) turn the pancake.

Stack them up and keep warm while you cook the rest.

Place slices of banana down the middle of each pancake and pour over a generous amount of toffee sauce. Fold over each side of the pancake into the middle. Decorate with more banana slices and toffee sauce.





exchangeipnbe

Fairtrade direct to your door  
**equalexchange, cafédirect  
& Day Chocolate**

Call 0131 554 5912 or email  
mailorder@equalexchange.co.uk



**FAIRTRADE MAIL ORDER**  
[www.equalexchange.co.uk](http://www.equalexchange.co.uk)

**FROM ALL OVER  
THE WORLD  
TO YOUR HOME**



For a full range of Fair Trade foods, crafts, clothing,  
jewellery, toys, furniture and gift ideas visit the One World.

**FAIR TRADE WITH STYLE**  
**ONE WORLD SHOP**



St John's Church, Princes Street,  
Edinburgh

T: 0131 229 4541

[www.oneworldshop.co.uk](http://www.oneworldshop.co.uk)



You can get this publication in Braille, in large print and on disc (only the text in Word) if you ask us.  
Please contact Interpretation and Translation Services on ☎ 242 8181 and quote reference number 05061.

For more copies in English call us on ☎ 529 4040

Make a difference

للحصول على معلومات حول ترجمة هذه الوثيقة إلى لغة جديتكم، الرجاء الاتصال بخدمة الترجمة 0131 242 8181 | هاتف:

Make your choice count

ধাপসহাৰ সাংস্কৃতিকৰ বাবে এই মসিলাসহাৰ অনুবাদৰ বাবেওহাৰ ওপা পেচাৰ হলে আহি উঠাওস। এৰ মতে  
0131 242 8181 নম্বৰে ফোন কৰা কামতাহলে নম্বৰ 05061 উল্লেখ কৰা

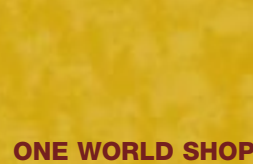
如欲查詢本文件的翻譯資訊，請電愛丁堡市議會翻譯及翻譯服務部  
JTSI 電話號碼為 05061，字號：0131 242 8181。

Make shopping matter

اذا كنت تريد معرفة ما يمكنك ان تشتريه من خلال الشركات التي تبيع منتجاتنا يرجى الاتصال بخدمة الترجمة  
0131 242 8181 | هاتف: 05061

Make Fairtrade your habit

EDINBURGH FAIRTRADE CITY STEERING GROUP MEMBERS



WORLD DEVELOPMENT MOVEMENT