
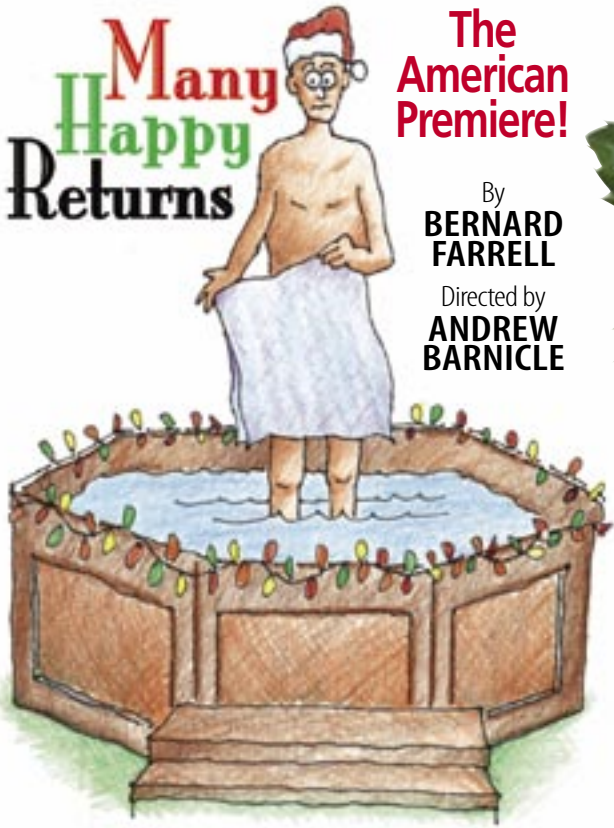


The Laguna Playhouse 
It's not just another night out...

Many Happy Returns



The
American
Premiere!

By
**BERNARD
FARRELL**

Directed by
**ANDREW
BARNICLE**

The Laguna Playhouse

It's not just another night out...



The Perfect Holiday Season Charmer!

It's Christmas, and Irene has an elaborate plan to redeem her out-of-work husband by impressing a super-market tycoon into hiring him. Of course, most everything goes wrong with the plan in this side-splitting holiday farce!

November 14-December 18, 2005

**Tickets On
Sale Now!**

Call 949.497.2787

Online at Lagunaplayhouse.com

Groups call 949.497.2787 ext. 219

Illustration by Tom Swimm



*Before
the Roar
of the
Crowd...*

hush hush hush hush hush hush

Prix Fixe dinner, 5:30-6:30 nightly, \$39.
Free public shuttle service, June - August.
hushrestaurant.com

858 South Coast Highway
Laguna Beach, California 92651
7 nights, 5 p.m. - 1 a.m., 949-497-3616

COLDWELL BANKER

Previews

INTERNATIONAL



Laguna Beach \$9,500,000

McAfoose & Associates

949.499.8957

Dana Point \$3,580,000

Mark Nix

949.633.1166



North Laguna Beach \$3,250,000

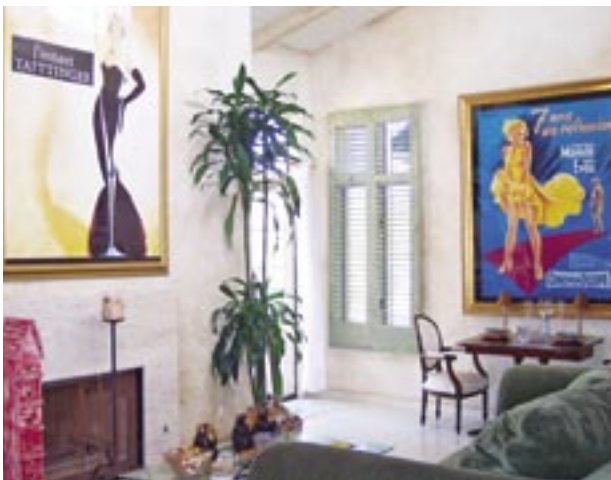
Bob Boyd

949.280.8001

Laguna Beach \$1,375,000

Pamela and Amanda Horton

949.633.6667



Laguna Beach \$1,199,000

Ana Maria Silberman

949.636.0169

Laguna Beach \$1,150,000

Theresa Tatch

949.464.3021

Feature Properties

LAGUNA BEACH
BOAT CANYON
949.494.0215

LAGUNA BEACH
NORTH
949.497.5599

LAGUNA BEACH
SOUTH
949.499.1320

©2005 Coldwell Banker Residential Brokerage. Owned and operated by NRT Incorporated. Coldwell Banker Residential Brokerage does not guarantee the accuracy of square footage, lot size or other information concerning the condition or features of property provided by the seller or obtained from public records or other sources, and the buyer is advised to independently verify the accuracy of that information through personal inspection and with appropriate professionals. Shady Canyon® is a registered trademark of the Irvine Company.



He caught her checking out the Mongolian Short Ribs at the next table.

Exotic fusion menu.
Luscious cocktails and late-night dining.
The O.C.'s hottest rooftop lounge.

OPEN 7 DAYS



spice things up

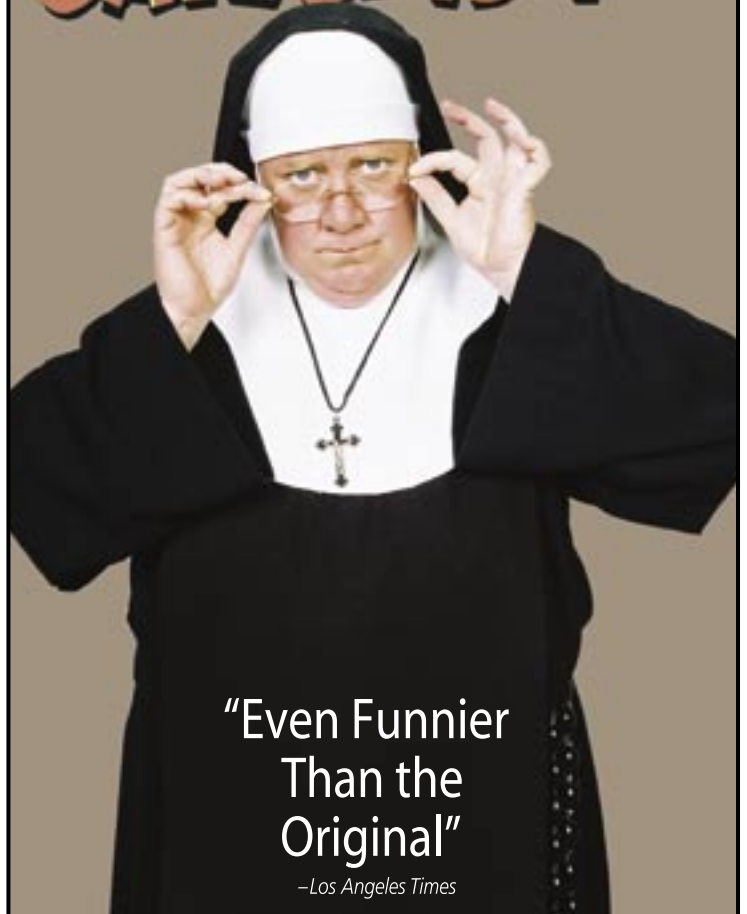
Reservations: 949.376.9718
savourysrestaurant.com

1287 South Coast Highway
Laguna Beach, CA 92651
(Inside the legendary La Casa del Camino hotel)

The Laguna Playhouse 
It's not just another night out...

SHE'S BACK!

LATE NITE CATECHISM 2



"Even Funnier
Than the
Original"

-Los Angeles Times

BY MARIPAT DONOVAN DIRECTED BY MARC SILVIA & MARY McAULIFFE
ORIGINALLY DIRECTED BY JANE MORRIS

SEASON SPONSORS: LAGUNA BEACH Visitors & Conference Bureau AA American Airlines DUNKIN' DONUTS COFFEE
FOR LAGUNA BEACH VISITOR INFORMATION: www.LagunaBeachInfo.org

Tickets on
Sale Now

Call 949.497.ARTS
Online at LagunaPlayhouse.com
Laguna Playhouse 606 Laguna Canyon Rd.
Laguna Beach, CA

RICHARD STEIN
Executive Director

ANDREW BARNICLE
Artistic Director

present

In Association with **MICHAEL ALDEN**

The Southern California Premiere production of

BAD DATES

By

THERESA REBECK

Starring

BETH BRODERICK

Scenic Design

DWIGHT RICHARD ODLE

Costume Design

JULIE KEEN

Lighting Design

PAULIE JENKINS

Sound Design

DAVID EDWARDS

Production Manager

JIM RYAN

Production Stage Manager

VERNON WILLET

Directed by

JUDITH IVEY

September 13-October 16, 2005
Moulton Theatre, Laguna Beach, California

Produced by special arrangement with Samuel French, Inc.

The Laguna Playhouse is a member of the League of Resident Theatres and the Theatre Communications Group.

CAST

Haley..... BETH BRODERICK

SETTING

Scene One – April

Scene Two – 2 Weeks Later

Scene Three – Same 2 Weeks Later

Scene Four – 2 Weeks Later Still

Scene Five – The Next Morning, 6:00 AM

LENGTH: APPROXIMATELY 90 MINUTES
THERE IS NO INTERMISSION
Please turn off all cell-phones and pagers. Photography and recording are prohibited.

Staff for This Production:

Assistant Stage Manager MAYA M. RODGERS




Assistant to Mr. Alden Don McAlaren

Light Board Operator Corinne Carrillo *Dresser* Cliff Senior

Sound Board Operator Jordan Rumery *Carpenters* Joseph Smith, Nate Yeoman

Stitchers Mary Bergot, Jennifer Hart, Maya Lash

Special Thanks to
Stuart Weitzman Shoes

 <p>The Actors and Stage Managers employed in this production are members of Actors' Equity Association, the Union of Professional Actors and Stage Managers in the United States.</p>	 <p>The Scenic, Costume, Lighting and Sound Designers in LORT theatres are represented by United Scenic Artists Local USA - 829, IATSE</p>	 <p>The Director is a member of the Society of Stage Directors and Choreographers, Inc., an independent national labor union.</p>
---	---	--

LAGUNA BEACH
 Visitors & Conference Bureau
Funds for this program provided by the lodging establishments of Laguna Beach.

Season Sponsors
AmericanAirlines®



Media Sponsor
OC METRO
 MAGAZINE



BETH BRODERICK (*Haley*) Beth is best known to audiences for her portrayal of Aunt Zelda on the long running hit series *Sabrina the Teenage Witch*. The show is a phenomenon continuing to air nearly everyday in every country in the World. Beth Broderick has gone on to star in numerous TV projects and Independent films. She is a recurring character on ABC's *Lost* playing Diane,

mother of the criminally minded Katie. Beth Broderick is jack of all trades; master of all of them. Her impressive resume includes roles in numerous feature films and television shows, as well as script writing, voiceover work and theatrical performances. Broderick is also a tireless humanitarian, being a founder of MOMENTUM one of the country's first organizations to help people with AIDS. Beth is thrilled to be returning to the stage in *Bad Dates* and honored to be working with the acclaimed actress and director Judith Ivey. Beth has appeared in numerous LA productions including *Zastrozzi* at the Beverly Hills Playhouse, *Triplets in Unison* at the Skylight Theatre Hollywood and *Carnal Knowledge* at the Pasadena Playhouse. Her NY credits include numerous appearances Off-Broadway among them *Murder at the Rutherford House*, *Elizabeth Rex the Musical* and *Stage Door*. Beth's family hails from Falmouth, Kentucky, she was born in Long Beach, California and Broderick grew up riding horses and bodysurfing in Huntington Beach. She graduated from Huntington Beach High School early, at the age of 16 and went on to study acting at the famed American Academy of Dramatic Arts in Pasadena, California. Upon completing the rigorous training program at 18, she moved to New York and began her professional acting career. Broderick made her motion picture debut as the sexy neighbor who seduces a young, innocent Jonathan Silverman in *Stealing Home*, which starred Jodie Foster and Mark Harmon. She has also appeared on the big screen in *Psycho Beach Party*, *Bonfire of the Vanities* with Bruce Willis; *Fools Rush In*, starring Matthew Perry and Salma Hayek; American Playhouse's *1000 Pieces of Gold*, *Shadow Hunter*; *French Exit*; *The Silencer* and *Man of the Year*. She recently completed filming of Independent films *States Evidence* and *Tom's Nu Heaven*. Broderick starred in several television series including *The Five Mrs. Buchanans* where she met the acclaimed actress Judith Ivey who remains a cherished friend, as well as *Hearts Afire* with Markie Post, John Ritter and Billy Bob Thornton. She also starred opposite Brad Pitt, playing a straight-shooting newspaper editor, in the series *Glory Days*. Broderick also had roles in such television movies as last year's *Homeland Security* opposite Tom Skerritt, as well as *Ordinary Heroes*, *Are You Lonesome Tonight?*, *Into the Deep Woods*, *Justice in a Small Town* and *Maternal Instincts*. Additionally, she is a recurring voice in the animated version of *Men In Black* on the Kids' WB. Broderick and her longtime collaborator Dennis Bailey (author of *Brave Journeys*) have written several screenplays including *A Cup of Joe*, *Wonderland* and *Three for the Money*. Her company, Regardless Films, has optioned the novel *Woodrow's Trumpet* by the late Tim McLaurin. Their latest project *House of Joy* is based on the novel *The Last Great Snake Show*. Broderick has been active in the battle against AIDS since 1984. In addition to her work with MOMENTUM and other AIDS organizations, she was also a founding member of the Celebrity Action Council of the City Light Women's Rehabilitation Program at the Los Angeles Mission, which provides hands-on service to homeless women to help them reclaim their lives and

families. Beth also works with the Good Shepherd Home for Battered Women and Children, Hollygrove Orphanage and El Proyecto del Barrio, providing gifts for each of their residents at Christmas and other holidays. She serves on the Board of Directors for The Progressive Majority and as a mentor/advisor for many youth groups such as the Hollywood Hill and the Young Progressives. Beth wants to extend a special thank you to producer Michael Alden, a gifted guy and life-long pal.



JUDITH IVEY (*Director*) is the recipient of the Tony Award—twice, the Drama Desk Award—twice, the Obie Award, and countless others. Most recently she was honored with the Sydney Kingsley-Madge Evans Award for 2004 from the Dramatists' Guild, and she has been inducted into the Texas Film Hall of Fame.

Some film credits include *Devil's Advocate*, *Washington Square*, *Mystery, Alaska*, *Brighton Beach Memoirs*, *Love Hurts*, *Harry And Son*, *Compromising Positions*, and most recently, *What Alice Found*. Judith starred in four television series, including *Designing Women* and *The Five Mrs. Buchanans*, starring opposite Beth Broderick. She was nominated for an Emmy for her performance in Hallmark's *What The Deaf Man Heard*. Some other TV film credits include *The Long, Hot Summer*, *Decoration Day*, *Half A Dozen Babies*, and *Rosered*. Ms. Ivey's most recent credit as a director is *Steel Magnolias* at the Alley Theatre. Judith has also directed the off-Broadway production of *More*, starring Yeardeley Smith, which she restaged for the Falcon Theatre in Los Angeles. Judith directed *Two For The Seesaw* at the Westport Playhouse, *The Go For It Guy* at the Aspen Comedy Festival, and *Soccer Moms* at Fleetwood Stage. Judith will be touring the U.S. in her one-woman show, *Women On Fire* during the 2005-06 season.



THERESA REBECK (*Playwright*)

Theresa Rebeck's recent theater projects include *The Water's Edge*, produced this summer at the Williamstown Theatre Festival, as part of their 50th anniversary season. *Omnium Gatherum* (co-written with Alexandra Gersten-Vassilaros, and finalist for the Pulitzer Prize) was featured at the Humana Festival 2003, and had a commercial run at the Variety Arts. Past New York productions include *Bad Dates* and *The Butterfly Collection* at Playwrights Horizons, *Spike Heels*, *Loose Knit* and *The Family of Mann* at Second Stage; *View of the Dome* at New York Theatre Workshop. Her work has been widely produced both regionally and internationally. In television, Ms. Rebeck has written for *Dream On*, *Brooklyn Bridge*, *L.A. Law*, *Maximum Bob*, *First Wave*, *Third Watch*, and *NYPD Blue*, where she also worked as a producer. In 2004 she wrote and executive produced a television pilot for Warner Bros/CBS, *The Webster Report*, directed by Barry Sonnenfeld and starring Stanley Tucci. In film, she has written the screenplay for *Kalamazoo*, an independent short starring Wallace Shawn and Adrienne Shelley. Other produced features include *Harriet the Spy*, *Gossip*, and the independent feature *Sunday on the Rocks*. Awards include the Mystery Writers of America's Edgar Award, the Writer's Guild of America award for Episodic Drama, the Hispanic Images Imagen Award, and the Peabody, all for her work on *NYPD Blue*. She has

been a finalist for the Susan Smith Blackburn prize twice, won the National Theatre Conference Award (for *The Family of Mann*), and was awarded the William Inge New Voices Playwriting Award in 2003. Ms. Rebeck is a member of Naked Angels, was the Lark Writer-in-Residence 2002-2004, and was recently elected to serve on the Dramatists Guild Council. Ms. Rebeck holds a Ph.D. from Brandeis University in Victorian Melodrama. She and her husband Jess Lynn have two children, Cooper and Cleo.



DWIGHT RICHARD ODLE (*Scenic Design*) begins his eleventh season as our resident designer. For over 100 Playhouse productions since 1988, his scenic and costume credits include *The Underpants*, *Tuesdays with Morrie* (which also played San Jose Repertory), *Tabletop*, *What the Night is For*, *The Quiltmaker's Gift*, *Rounding Third*, *The Shape of Things*, *American Buffalo*, *James and the Giant Peach*,

Kevin's Bed (American premiere), *A Moon for the Misbegotten*, *Old Wicked Songs*, *Travels With My Aunt* and *The Velveteen Rabbit*. Additional recent scenic designs: *Forever Plaid*, *Bright Ideas*, *The Constant Wife*, *Mr. Shaw Goes to Hollywood* and *Who's Hot, Who's Not* (both World Premieres), *Lovers at Versailles*, *Stella by Starlight* and *Moving On* (all American premieres). Recent costume credits: *Tale of the Allergist's Wife*, *The Last Five Years*, *The Secret Order*, *The Wizard of Oz*, *Spitfire Grill*, *Far East*, *Babes in Toyland*, and *The Glass Menagerie*. His Playhouse costumes for *The Last Session* and *I Love You, You're Perfect, Now Change* were also seen in Los Angeles. With South Coast Repertory, Mr. Odle designed some 90 productions and continues to costume its annual *A Christmas Carol*. Worked locally for McCoy-Rigby Entertainment, Fullerton Civic Light Opera, Ballet Pacifica, the Geffen and Pasadena Playhouses, Burbank's Colony Theatre and the Orange County Performing Arts Center. Created unique projects for two World's Fairs as well as Universal Studios, Disney, SeaWorld and theme parks in Seoul and Barcelona. Designed corporate events for Toshiba, Mazda, Honda, Marriott Hotels and Princess Cruise Lines. Two career highlights: six seasons as resident designer for Robert Redford's Sundance Theatre in Utah and the art direction for Pope John-Paul's 1987 mass in Dodger Stadium. A Yale University School of Drama graduate, Mr. Odle was a professor of theatre design at UC Irvine, CalState Fullerton and Stanford University and has been honored with a Lifetime Achievement Award in Scenic Design by the Los Angeles Drama Critics' Circle.

JULIE KEEN (*Costume Design*) *Bad Dates* is Julie's seventh Mainstage costume design for The Laguna Playhouse, preceded by *Mr. Shaw Goes to Hollywood*, *The Constant Wife*, *Stella by Starlight*, *Lovers at Versailles*, the World Premiere of *Jumping for Joy* and most recently *Bright Ideas*. In addition, Julie has designed three of the Playhouse's educational touring shows, *Sign of the Beaver*, *Island of the Blue Dolphins*, and *Stuart Little*. Design credits for the Playhouse's Youth Theatre include *Summer of the Swans*, *Lily's Purple Plastic Purse* and *Sarah Plain and Tall*. Other designs include *Three Viewings*, *The Interrogation of Nathan Hale*, *Faith Healer*, *Playland*, and *Lips Together, Teeth Apart* for South Coast Repertory, *Mourning Becomes Electra* for A Noise Within, *Sizwe Bansi Is Dead* for Wisdom Bridge Theatre in Chicago, *The Gin Game* and *A Raisin in the*

Sun for TheatreVirginia. In addition to designing for theatre, Julie is resident costume designer for the Dance Department at Santa Ana College and has designed for the Dance program at Stephens College summer campus in Steamboat Springs, Colorado. Other professional credits include work for The Washington Opera and the Utah Shakespearean Festival.



PAULIE JENKINS (*Lighting Design*) Laguna Playhouse: 43 productions since 1994, including *The Tale of the Allergist's Wife*, *The Underpants*, *The Last Five Years*, *The Secret Order*, *Far East*, *Enter the Guardsman*, *Gunmetal Blues*, *The Last Session*, *The Mystery of Irma Vep*. Regional theatre: over 300 productions for at such theatres as the Mark Taper Forum, South Coast Rep, Seattle Rep, Alley Theatre, Denver Center, Children's Theatre

Company of Minneapolis, and Atlanta's Alliance Theatre. International: stage shows in Sweden, Australia, Czechoslovakia, Poland; a royal wedding in Saudi Arabia. Theme parks: stage shows and electrical parades at Disneyland Resort, Tokyo Disney Sea, Lotte World, Universal Studios, Six Flags Magic Mountain. Currently: Parade of Dreams at Disneyland. Honored as exemplary alum by the University of Wyoming and recipient of the Angstrom Award for career achievement from the Los Angeles Drama Critics Circle.



DAVID EDWARDS (*Sound Design*) David is happy to be celebrating his sixteenth season as resident sound designer here at the Laguna Playhouse where he has created sound designs for well over 100 productions for the Main Stage and the Youth Theatre. Recent highlights of the last few years include designs for the national LORT tour of *Copenhagen*, *Always...Patsy Cline*

with Sally Struthers, and the North American premieres of the Sondheim review *Moving On* and Bernard Farrell's *Lovers at Versailles*. Favorite designs consist of: *The Last 5 Years*; *Picasso at the Lapin Agile*; *American Buffalo*; *Tuck Everlasting*; *The Woman in Black*; and the West Coast premiere of *The Secret Order*. His sound designs have enjoyed successful runs in Los Angeles venues as well, including: The Coast Playhouse with the Naked Angels company; The Matrix Theatre; the Norris Theatre; and at the Tiffany Theatre when our production of *The Last Session* continued there. Closer to home, David's designs have recently been heard at the La Mirada Theatre Center with McCoy-Rigby Entertainment's productions of *My Fair Lady* and *Smokey Joe's Café* as well as with other companies such as: Musical Theatre West, Laguna's No Square Theatre, Musical Theatre Company, Saddleback Civic Light Opera, and South Coast Repertory. Mr. Edwards also works as a free lance recording engineer and producer, and has recorded albums with a variety of artists such as the Tom Kubis Big Band featuring Jack Sheldon, folk icon John Renbourn, Orange County's own Bopsicle, and Mr. Steve Allen. David also mixed the Cast Recording for the Laguna Playhouse production of *Gunmetal Blues*, and most recently engineered and co-produced new CD's for the Ron Kobayashi Trio—*No Preservatives*, *Formula—Conduit*, and the Ron Stout Quintet—*For Chet and Other Heroes*.



VERNON WILLET (*Production Stage Manager*) returns to the Laguna Playhouse after stage managing Steve Martin's *The Underpants* earlier this year. Prior to that he helmed *Sherlock's Last Case*, the critically acclaimed *Grand Hotel the Musical* and *Ladies of the Camellias* at the Colony Theatre in Burbank. Other recent shows include Amanda McBroom's *Lady Macbeth Sings the Blues* at the Rubicon Theatre in Ventura and *The Kathy & Mo Show*, the last show at the now defunct Canon Theatre of Beverly Hills. Mr. Willet has worked with the Oregon Ballet Theatre and the Marla Bingham Contemporary Ballet and was the Production Manager for the Musical Theatre Guild in LA, where he has worked in many of the local theaters including the Dorothy Chandler Pavilion, the Henry Fonda Theatre, Cerritos Center for the Performing Arts, the Alex Theatre, La Mirada Center for the Performing Arts, the Pasadena Playhouse, the Canon Theatre, the 1000 Oaks Civic Arts Performing Complex, the Carpenter Performing Arts Center and the Los Angeles Theatre Center. His production company, Night & Day Entertainment, is shared with creative partner Cate Caplin and specializes in custom designed entertainment for private parties, trade shows and corporate events. Mr. Willet has been a proud member of Actors Equity Association since 1983.



MAYA M. RODGERS (*Assistant Stage Manager*) Maya is pleased to return to the Laguna Playhouse for the sixth time. Her training and background include *The Underpants*, *36 Views*, *Rounding Third*, *Mr. Shaw Goes to Hollywood*, and *The Constant Wife* for the Laguna Playhouse; *All My Sons*, *The Beginning of August*, and *The Philanderer* for South Coast Repertory Theatre (Stage Management Internship); *Hamlet*, *Merlin*, *The Marriage of Mr. Mississippi*, *CEO*, and *Cyrano de Bergerac* for the California Repertory Company; *The Crucible*, *Marat/Sade*, *Stand and Deliver* for Santa Ana College, and *Come Back to the Five and Dime Jimmy Dean*, *Jimmy Dean*, *Of Mice and Men*, and *Dracula* for the University Players at Cal State Long Beach as well as other smaller productions around Southern California. She is a graduate of Cal State Long Beach and the Idyllwild School of Music and the Arts and is a proud member of the Actors' Equity Association. Maya would like to thank her husband Jason for all of his support, love and patience.

MICHAEL ALDEN (*Producer*) Recently on stage, Mr Alden co-presented the world premiere of *Palm Beach The Musical* at The La Jolla Playhouse. In 2004, he produced the multi-award-winning *Bat Boy The Musical* at the Shaftesbury Theatre in London and Sarah Jones' *Bridge and Tunnel* at The Culture Project in New York which will open on Broadway

**When it Comes to
Real Estate Sales...**



**Nobody Outperforms
First Team Nolan.**

Supporting Local Arts & Real Estate Needs for Over 35 years
 900 Glenneyre • Laguna Beach • 92651
 949.497.5454

in the winter of 2006. In 2001 he produced *Bat Boy The Musical* at the Union Square Theater in New York and that same year he co-presented a national tour of *Save It For The Stage: The Life Of Reilly*, written and starring Tony Award®-winner Charles Nelson Reilly which had its west coast premiere at The Laguna Playhouse. In 2003 Mr Alden completed Stephen Daldry's award-winning film, *The Hours*. Under his own banner he produced the multi-award-winning hit comedy film, *Kissing Jessica Stein*, and Ralph Ziman's feature, *The Zookeeper* starring Sam Neill. Past films include: the internationally acclaimed, *Mother Mother*; October Films, *Lesser Profits* and *Just Cause* starring Sean Connery. His first theatrical production, the Brochu/Schalchlin musical *The Last Session* was nominated for New York's Drama League and New York Outer Critic's Circle Awards and is the recipient of the GLAAD Media Award for Best Theatrical Production, six Backstage West Garland Awards and four Los Angeles Drama Critic's Circle Awards. The musical had its West Coast premiere at The Laguna Playhouse. Following, Mr. Alden co-presented the Los Angeles production of the award-winning Howard Crabtree's *When Pigs Fly* at the Coronet Theater. Michael Alden Productions is currently in development on the romantic-comedy film *Been There Came Back*, by Shelly Howell, to be directed by Jim Fall; *Unfinished Business* by David Rajter to be directed by Barry Primus and the screen version of *Bat Boy The Musical Movie* under the direction of John Landis. Mr. Alden is thrilled to be working with his long time friend, Beth Broderick and is grateful to the multi-talented Judy Ivey for making this family event complete. He is delighted to be back at The Laguna Playhouse. Many thanks to Andy and Rick.



ANDREW BARNICLE (*Artistic Director*)

Andrew arrived as artistic director of the Laguna Playhouse in July of 1991. Since then he has directed over twenty productions for the Playhouse, including: *The Underpants*, *Bright Ideas*, *Tabletop*, *The Constant Wife*, *Lovers at Versailles*, *Rounding Third*, *Stella by Starlight*, *Wonderful World*, *American Buffalo*, the World Premiere of Sherwood Kiraly's *Who's Hot*, *Who's Not*, the U.S. premiere of *Kevin's Bed*, *Communicating Doors*, *Picasso at the Lapin Agile*, *The Woman in Black*, *Sylvia*, *Laughter On The 23rd Floor*, *Don't Dress for Dinner*, *Rumors*, *Othello*, his world premiere adaptation of his wife Sara's translation of Goldoni's *The Liar*, the Southern California premiere of *Inspecting Carol*, the world premiere of John Twomey's *Teacher's Lounge*, and Joe Orton's *What The Butler Saw*. Andrew previously served as the Head of Theater at United States International University in San Diego, where he directed acclaimed productions of *West Side Story* and *The Venetian Twins* at the Theater At Old Town. He also served as Associate Artistic Director at North Coast Repertory Theater, where his numerous directing credits include the San Diego premiere of *Torch Song Trilogy*. Andrew recently directed *Gunmetal Blues* at the Colony Theatre in Burbank and the female version of Neil Simon's *The Odd Couple* at Michigan's LORT Meadow Brook Theatre. He has appeared in a myriad of television and film roles, and played major roles at the San Diego Rep, Alaska Rep, Alabama Shakespeare Festival and Michigan's Meadow Brook and Hilberry Theatres. He has also appeared in several



Cedar Creek Inn

Enjoy contemporary American cuisine with one of our famous desserts. Cozy up to one of the fireplaces or dine on one of the garden patios.

In Laguna Beach
384 Forest Avenue
949-497-8696

Also in San Juan Capistrano and Brea

Off-Broadway productions including three at SoHo Rep and True West at the Cherry Lane Theater. Andrew recently appeared at the Playhouse as the Actor/Guardsman in *Enter the Guardsman* and also as gumshoe Sam Galahad in *Gunmetal Blues*, and he can also be heard on the cast recording. Playhouse audiences have also seen him as David in *To Gillian on Her 37th Birthday*, Austin in *True West*, and David in *Strange Snow*. Scenic design credits include *Mandrake*, *Emily*, *The Musical Comedy Murders of 1940*, and *Great Expectations* at North Coast Rep, and *The Diviners*, *Brighton Beach Memoirs*, *What The Butler Saw*, *Breakfast With Les and Bess*, *Rumors*, *Room Service*, and *Don't Dress For Dinner* for the Laguna Playhouse.



RICHARD STEIN (*Executive Director*) *Bad Dates* is the 97th Mainstage play produced by Rick since he assumed the top post at The Laguna Playhouse in March 1990. His directorial credits here include the upcoming (April 2006) West Coast Premiere of Bryony Lavery's *Last Easter*, the West Coast Premiere of Mitch Albom's *Tuesdays With Morrie* by Jeffrey Hatcher and Mitch Albom,

co-produced with San Jose Repertory Theatre where it also ran, the American Premiere of Michael Weller's *What the Night is For*, Pulitzer Prize-finalist Jon Marans' *Old Wicked Songs* and the world premiere of Marans' *Jumping for Joy*, the West Coast premiere of Neil LaBute's *The Shape of Things*, Arthur Miller's *The Price* (Robby Award, Best Production

of a Drama), the Southern California premiere of Richard Dresser's *Gun-Shy*, the Los Angeles area premiere of Giles Havergal's adaptation of Graham Greene's *Travels With My Aunt*, the 1996 Laguna Playhouse production of Jeremy Brooks & Adrian Mitchel's adaptation of Dylan Thomas's *A Child's Christmas in Wales* and the world premiere of David Drummond's *The Labors of Hercules*. At the University of Hartford's Lincoln Theatre, he directed professional productions of Isaac Bashevis Singer & Eve Friedman's *Teibele and Her Demon* and Edward Albee's *Seascape*. The latter was named one of the top ten productions that year by Variety. At the Lincoln Theatre, he became known as the nation's foremost presenter of distinguished American regional theatre companies, including the Guthrie Theatre, American Repertory Theatre, Syracuse Stage, Asolo Theatre, The Acting Company, Mabou Mines and Yale Repertory Theatre's original production of August Wilson's acclaimed *Ma Rainey's Black Bottom*. Additionally, he was recognized for producing the work of the renowned French-Canadian playwright Michel Tremblay, including the U.S. premiere of *Albertine, in Five Times*, starring Tammy Grimes. With a colleague, he founded the Contemporary Theatre of Syracuse. He holds degrees from Columbia & Syracuse Universities, returned to Columbia on a National Endowment for the Humanities fellowship, and was sent to Korea by the International Theatre Institute on a cultural exchange. He has served on the Executive Committee of The League of Resident Theatres (LORT), and currently serves as Chair of the Laguna Beach Alliance for the Arts.

South County Bank



Proudly Announces
The Appointment
Of
Matt Greville

Vice President &
Branch Manager

Our Specialties are many and include the following:
Business Banking | Online Banking | Business Loans | SBA Loans
Construction Loans | Commercial Real Estate Loans

South County
BANK

540 South Coast Highway, Ste #202, Laguna Beach, CA. 92651
(949) 464-2800



Validated Underground Parking Available, Convenient Hours

www.southcountybank.com



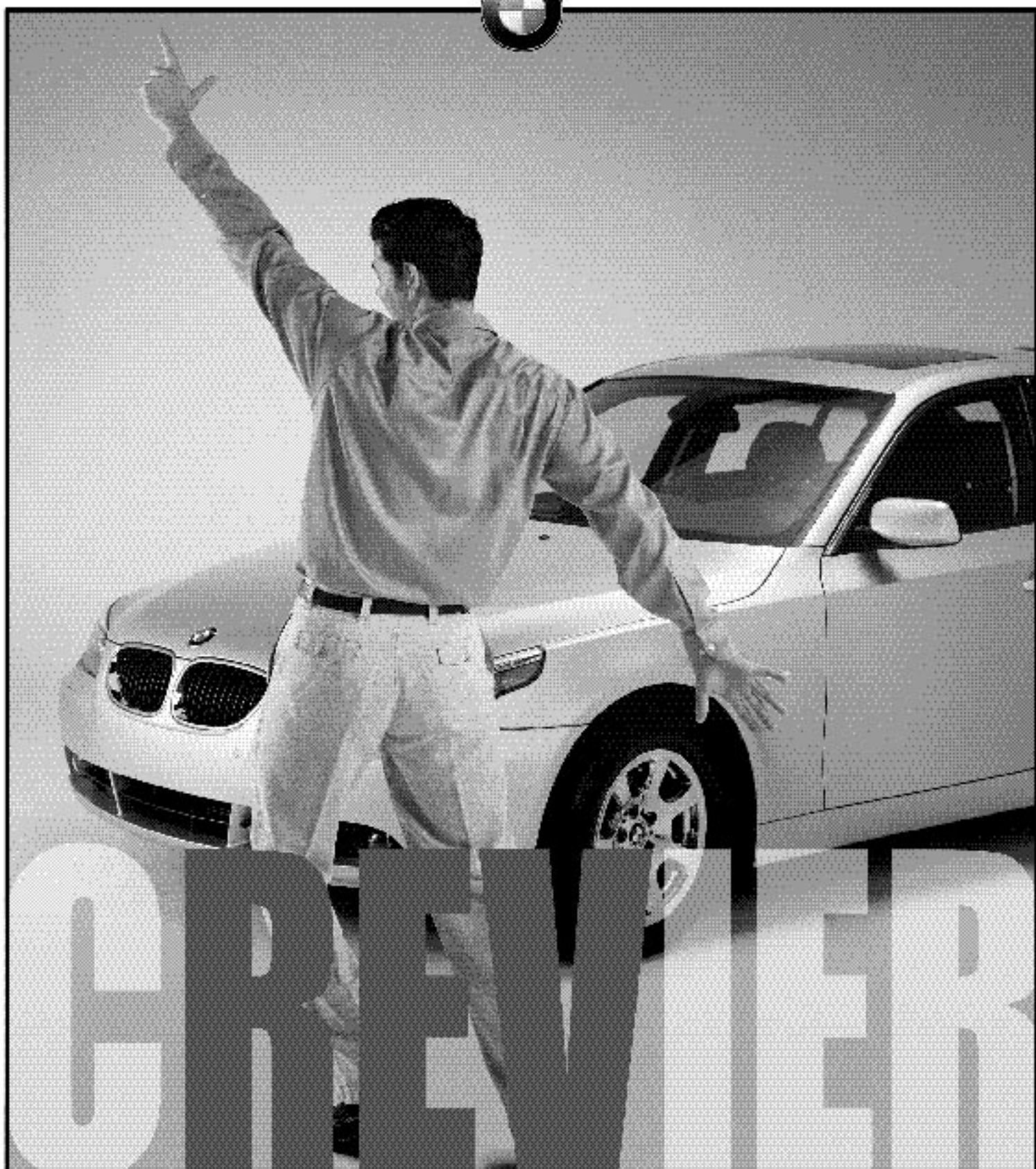
**The staff at L.T. Litho is proud to
Support the Laguna Playhouse.**

*L.T. Litho and Printing Company
is a third generation family business that
has been serving Southern California with
high quality printing for over 30 years.*



L.T. LITHO & PRINTING COMPANY
16811 Noyes Avenue, Irvine
California 92606

(949) 863-1340 • FAX (949) 724-0732



GET YOUR MOTOR RUNNING.

Santa Ana Auto Mall, 55 Freeway at Edinger 1-800-NEWBMWS www.crevierbmw.com



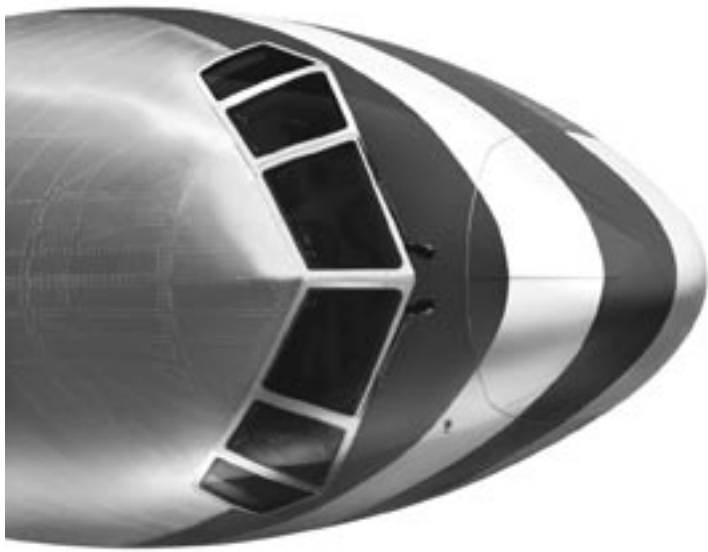
STUART
WEITZMAN

a little obsessed with shoes

© 2001 Stuart Weitzman, Inc.

437 N. Rodeo Drive Beverly Hills

South Coast Plaza Costa Mesa



**American Airlines
Is A Proud Sponsor Of
The Laguna Playhouse
2005-2006 Season.**

To find out more about American, visit us at AA.com.

AmericanAirlines®

AmericanAirlines and AA.com are marks of American Airlines, Inc.





Take Charge of Your Bladder Control Problem!

Do you have to use the bathroom too often, find one quickly or do you suffer from embarrassment of bladder leakage?

At Pacific Coast Urology Medical Center, we specialize in minimally invasive therapies for all of your bladder control problems. Let us show you how you can take charge of your bladder control problem with in-office biofeedback, new medications, or innovative outpatient procedures like our new bladder "pacemaker."

Throw away your pads and resume the activities you love.

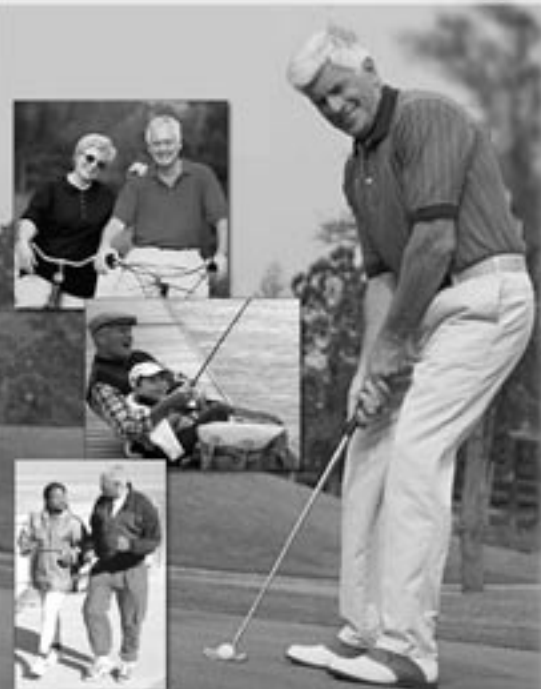
Call Today!
1-888-735-4336
www.pacificcoasturology.com

Robert G. Pugach, MD
SPECIALIZING IN MINIMALLY
INVASIVE TREATMENT
OF UROLOGIC CONDITIONS



Locations in Los Alamitos, Huntington Beach and Long Beach

Tired of Limiting Activities You Love?



If you are over 50, you probably have Benign Prostate Hyperplasia (BPH). You know the symptoms - frequent or sudden bathroom trips, feeling tired because you can't get a good night's sleep, a slow urinary stream or embarrassing urine leakage.

Dr. Robert Pugach is **the most experienced physician** on the West Coast specializing in minimally invasive prostate treatments. Let Dr. Pugach and the staff of Pacific Coast Urology Medical Center show you how you can:

- End your prostate problem with a **30 minute office procedure**
- Return to normal activities the next day
- Avoid hospitalization and surgery
- End your use of less effective prostate medications

Call Today!
1-888-735-4336
www.pacificcoasturology.com

Robert G. Pugach, MD
SPECIALIZING IN MINIMALLY
INVASIVE TREATMENT
OF UROLOGIC CONDITIONS



Locations in Los Alamitos, Huntington Beach and Long Beach

15th Annual
A MOVEABLE FEAST



A Unique Dining Experience

The Laguna Playhouse 
It's not just another night out...

SAVE THE DATE!

Monday, October 17, 2005
5:30 pm-10:00 pm

\$150.00 per person

How it Works

- Twelve of the finest restaurants in Laguna Beach showcase their considerable talents.
- You choose where you wish to enjoy Act I—Appetizers and Act II—Entrée.
- You join other *Moveable Feast* diners as you proceed, by foot or by trolley, to the restaurants of your choice.
- After dining, return to Tivoli Terrace for Act III—Dessert, jazz and cocktails and our exciting *silent auction & grand prize drawing*.

Season Subscribers will be mailed a Feast Invitation in September

Not a Subscriber? Please call 949.497.2787 ext. 308
to request your Feast Invitation

15th Annual A Moveable Feast
Grand Prize Raffle Drawing

NEW YORK, NEW YORK!

Win an all-expenses paid weekend for two to the Big Apple.

- Three nights at a Marriott in New York City.
- Breakfast For two each morning.
- \$100 Gift Certificate to The Palm, a classic American Steak House.
- Lunch or dinner at Union Square Café offering seasonal American cuisine in a relaxed setting of casual elegance (\$150 certificate).
- \$1000 gift cheque for airfare.
- And *of course*, two tickets to a Broadway show. (To be arranged when travel dates are confirmed)



Opportunity Drawing tickets \$10 each. Six tickets—\$50 or Twelve tickets—\$100

Tickets will be sold at the Playhouse September 17- October 17 or by phoning at 949.497.2787 ext. 308
The winner will be drawn at *A Moveable Feast*, October 17. Winner need not be present to win.

Important Reminders

- There is no smoking in our Moulton Theatre facilities.
- Latecomers will be held until an appropriate interval.
- No cameras, flashlights, cellular phones, or recording devices permitted.
- Please turn off beepers and watch alarms.
- Infrared listening devices are available for the hearing impaired.
- Laguna Playhouse mainstage performances may contain adult language and theme, smoking by characters on stage, the use of strobe lights, the use of theatrical fog, or the discharge of firearms.

September, 2005

Dear Haley,

Take my advice and forget dating!
Shop at B&C Custom Hardware and Bath...

You'll like the hot water we get you into.

Your friends,



B&C Custom Hardware and Bath
23461 Ridge Route Drive, Laguna Hills, CA 92653
949.859.6073 www.customhardware.net

Muldoon's Dublin Pub & Celtic Bar

Est. 1974

Juicy
Certified
Angus
Steaks

Truly
Flavorful
Seafood

The Best
Sunday
Brunch



Perfect
Pints

Beautiful
Private
Party
Facilities

Live Music
Friday
thru
Sunday

202 Newport Center Dr. • Newport Beach, CA
www.Muldoonspub.com

949-640-4110

Open Tuesday-Saturday @ 11:30 am
Open Sunday @ 10:30 am
Closed Monday

The Laguna Playhouse

It's not just another night out...

Curtain Call Society

We are pleased to recognize these individuals who are contributing to the long-term future of the Laguna Playhouse by making a gift of cash or securities to The Laguna Playhouse Endowment Fund, or by establishing an estate gift benefiting the Playhouse. Their generosity helps to ensure that the Laguna Playhouse will be here to provide the enrichment of live theatre for our children and for the future generations that follow.

Anonymous	Suzanne S. & James R. Mellor
Estate of Jean B. Adelson*	Sid & Nancy Petersen
Sophie & Larry Cripe	Ryna & Jack* Rothberg
Estate of Rosemary B. Fintor*	Elinor Schmidt
George Heed & Martin Conlon	Sindi & Ron Schwartz
Margaret R. Murdy Lusk	Marguerite Sears*
Iлона Martin	Alison & Richard Stein
Greg & Monica McCaffery	Shirley & Ken Wentzel

*If you would like more information about
the Curtain Call Society, please call Jon Wagner,
Director of Development at
949.497.2787 ext. 215.*

**Deceased*

Lagu□

Annual

Fund. This list reflects donations made within the past 12 months (ending July 31, 2005). These gifts help to bring extraordinary theatre to life while preserving a vital cultural resource for our community. If you have any questions on this listing or would like more information on donating to the Playhouse, please contact Jon Wagner, Director of Development, at (949) 497-2787, x 215.

Major Institutional Support

The Laguna Beach Business Improvement District,
an initiative of the Laguna Beach Visitors & Conference Bureau
supported by lodging facilities within the City of Laguna Beach

Executive Producers (\$25,000+)

Wendy & Rick Aversano
James R. & Suzanne S. Mellor

Larry & Sophie Hall Cripe
Sindi & Ronald Schwartz

Los Angeles Times Family Fund
The Shubert Foundation

Producers (\$10,000+)

Fran Bass
Margaret L. Baldwin
Dr. & Mrs. Raymond M. Contino
Mr. Don Crevier
Janet Dickson in Memory of Jerry Dickson
Andrew & Lori Donchak
Jerry & Maralou Harrington
George Heed & Martin Conlon
Haskell & White CPAs
Ilona W. Martin & Luis Marmol
Vincent J. & Joy McGuinness

PacifiCare Foundation
Pacific Life Foundation
Sid & Nancy Petersen
Marjorie L. Phillips
Playhouse Parents
Westcott (Bill) & Hillary Price
Sylvia Holden Robb
Mr. and Mrs. William H. Roberts
The Samueli Family Foundation
Richard & Betty Schweickert

Shea Properties
Keith & Judy Swayne
John & Gail Ueberroth
Ginny & Peter Ueberroth, The Ueberroth
Family Foundation
U.S. Bank
Elaine & Martin Weinberg
Barbara Steele Williams Fund of
the Orange County Community
Foundation

Artists Circle (\$5,000-9,999)

Allergan Foundation
Claes & Georgia Andersen
Mr. & Mrs. Donald Bendetti
Employees Community Fund
of Boeing California
Nancy & Rod Daley
Alison & Bob Davis
Brian & Sadie Finnegan
Bill & Marcia Gaboury

Huguet & Andre Gaudreau
William Gillespie Foundation
Joan Gladstone & Edward Gillow
Bill & Harriet Harris
Cynthia Harriss
City of Laguna Beach
Link Lancet
Dick & Maggie Murdy Lusk

Maurice & Melinda Masson
Deborah M. & Henry Mayhew
Suzanne Caffey & Terry McKenna
Ursula M. Michaelson
Mike & Anne Morris
Laura & Louis Rohl
Salomon Smith Barney, Pasadena
Miss Elinor Schmidt
Paul & Heather Singarella

Trustees (\$3,000 - \$4,999)

Wylie & Bette Aitken
Andrew & Sara Barnicle
Ms. Jody Upham Billings
Jane & Sean Browne
Nancy Bushnell
William E. Callahan, Jr., M.D.
& Clifton S. Meek II
Salvatore DiMascio
& Pauline Chilton
Citizen's Business Bank
Donald S. Clurman
LaVerne Friedmann
Kurt Grosz

Lisa H. Hale
Julie Burbridge-Hauck
& David Hauck
Otis & Barbara Healy
Michael & Norma Helin
Ms. Kim Herbert
Nancy & Marcus Hiles
Teri & Alan Hoops
Traute R. Huycke
Sue & Ben Itri
Julie Brinkerhoff-Jacobs
& Donald Jacobs
J. Stanley &
Mary W. Johnson Family

Dr. and Mrs. George Kallins
Ken & Jan Kaplan
Gordon Lamb & Greg Patterson
William A. Logan
Victoria & Dale Madler
Nancy & Michael Meyer
Kurt T. & Gretchen Mulville
Mr. & Mrs. Alexander Munro
Michael L. Naples, CFM
Sue & Dennis Parks
Susan & William Pereira
Mrs. Michael J. Peterson
Karyn Philippsen

Mary O'Brien-Pritchard
& Less Pritchard
Barbara Ramsey
Gwynn & Jeff Sharpe
Southern California Gas Company
South Coast Medical Center
Rick & Alison Stein
Patricia Tartaglia
Stephanie & Ken VandeVeer
Jon & Nancy Wagner
Jean & Tim Weiss
Ken & Shirley Wentzel
Jim & Tish Wood
Miki Young

Associate Producers (\$1,000-\$2,999)

Mr. Alexander Alpert
 Dr. Eugene Auerbach
 Baim Family Foundation
 Beach House
 Judy & Jim Bergman
 James Broersma
 Laura Lee &
 Richard C. Browne
 Debbie Chambers
 Pamela & Michael Chozen
 Mr. Richard S. Clark
 Bobbi Cox
 Thomas P. Davis
 Discovision Associates
 Sharon W. Ettinger
 McLaughlin &
 Don McLaughlin
 Barbara & Jim Foster
 Veronica Gray
 Andrew & Loreen Guilford
 Pat & Gene Hancock
 Richard B. & Nora Higgins
 Brian & Lori Hirth
 Harold & Jennifer Hofer
 Jeffrey & Sally Jameson
 Michael Jeffers
 James Klinger
 Bob & Lisa Kraft
 Riki & Ira Kucheck
 Clark & Lockie Leonard
 Vincent J. LePore III, Esq.
 Nadine & Gene Leyton
 Brent & Diane Liljestrom
 Greg & Patricia Lundeen
 J.A. Makena Marangu, M.D.
 Orville L. & Jeane Marlette
 Jack & Janet Massimino
 Northern Trust Bank
 Carolyn Olsen
 Chris & Pat Olsen
 Linda & James Pierog
 Donata Plumley
 Paul Puma
 Shirley Quackenbush
 Questar Engineering, Inc.
 Riviera Publications

Yvonne & Wayne Rumbles
 Diane & Igal Silber
 Deborah Simon
 South County Bank
 Ken & Val Tait
 Renee Turbi
 UPS Foundation
 Charles & Linda Wade
 Dale A. Williams
 Vina Williams & Tom Slattery
 Natalie Zucker

Patrons (\$500-\$999)

Zee Allred
 Avaya
 Barton A. & Karen Beckman
 Josiah G. Belden
 Mr. & Mrs. Ronald E. Blanchard
 Carlson Companies
 Personal Legacy
 Tom & Suzy Casey
 Marjorie Coulomb
 Patricia McCormick &
 Paul Critchlow
 Jim & Nora Cunningham
 The Curtis L. Carlson Family
 Foundation
 Lauri & Steven Delson
 Jack & Cindy Douglas
 Joseph & Eleanor Dunn
 Steven & Jill Edwards
 Elizabeth A. & Joel Ellis
 Mary & Joe Ferguson
 Maryann & Roger Finnestad
 Mari J. Frank Esq. &
 Lloyd Boshaw
 P.J. Geerlings
 Russell & Kathleen Givens
 Ellie & Mike Gordon
 Donn Gusemano
 Heidi Hall & Steve Guzowski
 Rosemary Healy & Thomas Noto
 Insights Worldwide Research
 Dr. & Mrs. Bertram W. Justus
 Phil Kaplan
 Jay & Ellen Kaufman
 Michael Kennedy
 Martin & Estelle Langer
 Joe Lauderdale
 Tom & Karen Mauro
 Charles D. Miller
 Sylvia & Robert Moore
 Karen Morris

Barbara Mosen
 Mike Noggle
 Anne B. Nutt
 Mr. R. Pacini & S. Sylvester
 Greta & Joel Panish
 Pierce Group
 Nancy & Don Pooley
 Algis Ratkelis
 Dr. Sandy Ratner & Hilary Davis
 Fran & Jim Shanks
 Pauline R. Sloan
 Ms. Faith Strong
 John Tatham
 Lynda Thomas
 Luis & Virginia Villa
 Carol Foster & Gary Waldron
 Mr. & Mrs. Don C. Whitaker
 Hope & Jon White
 Robert L. Whitney
 Victoria Koff & Charles Wyman

Sponsors (\$250-\$499)

Stanley & Anne Angermeir
 Barbara & Don Barda
 William & Marion Barstow
 Binnie Beaumont
 Sally & Paul Bender
 Tom & Carolyn Bent
 Grace & David Weston Bixby
 Ralph & Judith Blakeney
 Susan & Bill Blanchard
 Mr. & Mrs. Stan Braden
 Arthur & Deborah Braeger
 Mark Bregman
 Howard Brief & PK Jenican
 Robert & Leslie Brocoff
 Ann Marie Bundy
 John & Yasuko Bush
 David B. & Denise M. Carroll
 Ruth & Charles Castro
 Dr. & Mrs. Aldon E. Clark
 Stewart A. Clark
 Karen Cline
 Lawrence L. Collier
 Linda Crews
 Donald & Dana Davis
 Perry & Ethel Davis
 Sam Dawson
 Helen Diamond
 C. Loren Doll
 George & Marilyn Dowd
 Johnnie Earnest
 El Morro School
 Meri & Charles Fedak
 Jon & Peggy Feder
 Lori Fiduk
 Sharon A. Fitzsimons

Ralph & Francine Flewelling
 Frank Freed
 Wilbur & Glennor Friedson
 Arthur & Cindy Fries
 Josephine Giroux
 Sidney & Shirley Glasser
 Sidney Glazer
 Barbara & Jack Goffman
 James & Gretchen Gorman
 Glenn & Kathryn Gray
 Allen Grogan & Susie Edberg
 Paul & Marilyn Gushard
 Bob & Shirley Haeefe
 James & Jean Hinkle
 W. Frances Holder
 Ara & Sandra Hovanessian
 Donald Jacobson
 Thomas & Judith Jenkins
 Robert & Lunette Jones
 Robert & Patricia Jones
 James & Heidi Kenan
 Stephen King
 Robert Granville Kirkup
 Mr. & Mrs. Warren Knudson
 Ann Kough & John Kennedy
 Raoul LaBate
 Carol & Richard LaBowitz
 Dr. and Mrs. David C. Law
 Diana & Gary Leeds
 Jim & Linda Leisner
 Edward Leonard
 Dr. & Mrs. Eugene B. Levin
 Bud & Ruth MacRae
 Alan & Judy Marsh
 Virginia & William Marshall
 Charles & Candy McBrayer
 William & Lydia McCroskey
 Jo An L. McDonald
 Peter & Carole Meltzer
 Dr. & Mrs. Mark Minot
 Chandler Moisen
 Joseph & Patricia Morabito
 Sharon Morrison
 Joanna Muir
 John & Marjorie Murray
 Ron & Mary Ann Nadolski
 Mrs. Phillip A. Petty
 Thomas Phelan
 Marie & Anthony Pierotti
 Edward & Susan Pirrell
 Larry & Anne Rank
 Michelle Reinglass
 Tom & Michelle A. Rhodes
 Mona Roberts
 Ms. Ryna Rothberg
 Carol Saltzman
 Loren Sandberg
 Joel & Patti Sheiner
 Dr. & Mrs. David Shore

The Laguna Playhouse The Annual Fund

- Paulette Silva
Dorothy Somers
Nancy Staiger
Karl & Charlotte Stal
Robert & Marilyn Steele
Al & Phyllis Steinberg
Barbara & Wayne Stetina
Gideon & Sheryl Strich
Mary A. Summers
Richard Swanson
Richard & Noel Taylor
Shashi Tej Paul
Susan & John Tettemer
Roger & Sharon Vail
Elaine Vanderpool
Vonda Van Dyke Scoates
Anthony Vasek
Mickie Villanueva
John Washer
Whitney Roof
Kathryn S. Wright
- Friends (\$100-\$249)**
- Harry Rawlins &
June Adams-Rawlins
Ann & Dougall Agan
Dennis Aigner &
Camille Bertolet
Dennis & Judi Alekel
Dr. Bill Anderson
Kim & Stuart Anderson
William & Barbara Annan
Juliet Ansley
Allan Arbus
Dixie & George Arneal
Margareth C. Arst
Carol Artmann
Linda Atkins
Don Baddorf
Cora R. Baldikoski
Mr. & Mrs. Glenn E. Baldwin
Edward A. & Jan Barbieri
Karen Barkovitz
Hal & Carole Barnett
Alan & Joyce Barton
Mr. Ralph Bates
Gene Beauchamp
Ronald & Michele Beckler
Terry & Diane Beeman
Rosemary &
Douglas Beliakoff
Nancy & Lantz Bell
Annette & George Bellino
Karen & Gary Belz
Robert & Nancy Berwick
John Besnard
Paul & Bobbi Beyer
Gloria & Mark Bird
- Kathleen Blackburn
Suzanne M. Blecker
Mr. A. Nelson Bone
Elia Bonino
Ms. Judy Bostwick
Betty C. Boyd
Elsa Karen Braden
Jack Bramet
Benjamin Broderick
George & Johanna Brody
Penny & Victoria Brown
James & Carol Browning
Raquel Bruno
Rebecca Bruno
Sonny & June Budd
Sheila W. Bullock
Heather & Ron Burek
Irving & Eleanor Burg
Bob & Kay Campbell
Michael & Valerie Cantwell
Joel & Mary Carlson
Theodore Carter
Tom & Laurie Casey
Thomas Chappell
Richard Cheshire
Ronald Chez, MD
Mr. Alex Cilento
Ms. Krista Clark
Hugh & Katie Coffin
Maxine Cohen
Sue Cohen
Greta Cohn
John & Ann Coil
Bob & Lori Cole
Margaret Coleman
Janet C. Collier
Diane Coltrane
Rosemary & John Connor
John Cooley
Ruth Cooper-Harley
Beverly & Robert Cordova
Dorothy H. Cornish
Iliana Corson
Cynthia & Marcus Crahan
Claudia Crawford &
John Link
Rebecca & Randolph Cripe
Ms. Joan C. Crisci
Edward V. &
Evelyn L. Crook
Mary A. Crowl
Bob and Louise Cryer
Patsy Cundiff
Dee Curry
Lou & Christianne D'Ambrosio
Judith Daniel
Janet Davidson
Ms. Nancy Davis
- Sandra De Angelis
B.J. & Cleo Dennis
Carol Desborough
Christine Devarenne
Gerald & Veronica DeVries
Catherine Diener
Jean E. Dignan
Mr. & Mrs. Mark Disman
June Dittman
Henry Dittmeier
Joanne & Frank Dohn
Sylvia & Norm Dolby
Vivian Draughon
William C. Edmundson
Paul & Jane Egly
Robert & Nancy Englund
James & Carol A. Evans
Charlene Fairclough
Mrs. William Farrington
Marie H. Ferguson
Charles M. Finch
Constance Fleming
Jim & Cindy Fletcher
Patricia Fletcher
Pat & Judi Florentine
Ruben Flores
Sally Flotho
Penny M. Fox
Greg & Kaye Foy
Dennis R. Fratt
Patrick J. Freeman
Dwight & Suzanne Frindt
Margaret Frowd
Lori Gamble
Marsha Gandin
G.B. Business Services, Inc.
Kay Gertz
Ada Kless Gilbert
Anne M. Gilbert
Davey & Gali Glantz
Mr. Robert Glasser
Irwin & Gloria Goldberg
Jeanne & Fred Golding
Deborah Goldman
Gale Goldsberry
Bernard & Ruth Goldware
David Goodman
Henry & Robin Gotterer
Dorothy Jo Gray
Dr. Stuart &
Adrienne Green
Ruth Gross
Franklin & Judith Grossman
Kermit & Betty Gruberg
Dolores S. Grunigen
Harry & Sylvia Gruzen
William Guidas
Grace M. Gundell
- James Haas
Jana Hackett
Catherine Hall
James G. Hall
Loretta Hall Hollo
Lisa & Bob Hart
Massie Hatch
Elaine Hawkey
Michael Healy
Jeff Heath
Mr. & Mrs. Steve Helfer
Alan & Phyllis Henderson
Kathleen & John Herman
R. Bruce & Mickie Hezlep
Ms. Nancy L. Hightower
Jack Hirshberg
Mr. & Mrs. Tom Hollister
Patricia Holt
Mr. Geoffrey Holzrichter
Dan & Jan Horgan
Ken & Beverly Horn
Andrew and Pamela
Horowitz
Jerry & Patricia Howell
Dixie Hubner
Ms. Marie Huffman
Charles Hunter
Valerie & Hans Imhof
Carol Inzitari
Dr. & Mrs. Kenneth F.
Jamieson
Frank & Roberta Jeness
Benjamin Jensen
Mr. & Mrs. Arthur Jeppe
Francis & Patricia Jessoe
Doug Johnson
Lori A. Johnstone
Eva C. Jones
Jan Jones
Mr. & Mrs. Sidney A. Jones
Korey S. Jorgensen
Michael Karn
James M. Kay
Jay Keithahn
George & Diane Keplinger
Steven & Arlene Kern
Frances Kieffer
Jennifer King
Gregory Kirkorowicz
Martha J. Kistler
Dr. Martin Klein
Ray & Shirley Klein
Dr. Robert M. & Joan Klein
Ms. Carroll Klett
Spencer L. & Carolyn Knapp
Robert O. Knecht
Alice & Charles Knight
- Mr. & Mrs. Edward A.
Knoepfle
Pat & Jim Kollenda
Sharlene &
Gilbert Konowitch
Dr. Charles Kovan
Jon Krause
Ben Kraut
Jan & Charles Kristenson
John & Paula B. Kruse
Lee Kucera
Paul R. Kuhn
Sheila & Joel Kushell
Patricia Lamont
Ronald W. Langer
Amy Larson
Maryanne Leckie
Marilyn & Lewis Leeburg
Mr. & Mrs. Jerry Lehman
Nora Lehman
Robert J. Leonard
Janis Liss
John & Bonnie Livingston
David Smith &
Carol Lloyd Smith
Kerr & William E. Low
Michele & John Luna
John T. Lynch
Kate Lyon
Claire MacKay
Jean Madera
William Mangold
Shirley Marr
Roberta & Sheldon Marshall
Don & Joan Marske
Doretta Martin
Michael & Roberta Martin
Elizabeth M. May
Julie & Gordon McAlpine
Karen & James S. McBride
Lynn McCluey
Michael G. & Judy McCoy
Joseph McGuire
Janice & John McIntyre
Cary McKeown
Mark McManus
Morris & Diane Meadow
Jim Mears
Randy Melson
JoAnn & William Mercer
Edward & Jeanette Merrilees
Mark & Janet Merryfield
Mary E. Metcalf
Jeanne R & William Meyers
Linda & Frank Meyskens
Terri & Don Milder
Robert F. Miller
Herbert (Herb) Milligan

Ann Mitchell	Peggy Penjoyan	Kenneth & Judi Saczalski	Sylvia & Bob Srigley	Michelle & Kevin Voigt
Fred Andrew Mitchell	Dr. Jose & Iraida Perez	Hugh Saddington	Marion Stark	Shahin Vosough
Wilfred Mitchell	Sheila & Art Perrone	G. Barrie & Sheila Sale	George Stavros	Cynthia & Robert Wadell
Joan Moe	Rick & Susan Peterson	Mark Saltzman	Mr. & Mrs. Michael Steger	Ken & Mary Wakefield
Mr. Chuck Moniak	Terry Petracca	Richard & Sandra Sanders	Ronald & June Stein	Candace Wallace
Jean R. Moriarty	James B. Pick	Laurie & Richard Sandfer	Barbara Steinberg & Leslie Ingham	Cynthia Wallace
Diane Morris	Tom & Maureen Pietryga	Humberto Sauri	Pearl Steven	Charles W. & Julia Walz
Gene Nalbandian	Bruce Pittenger	Joann Schaum	Allen Stewart	Robert J. Watkins
Debbie Narajowski	Helga Pralle	Elizabeth Schilt	Karen & Richard Stewart	Sandee Welch
Mr. Bradley Neal	Mr. John Pugh	Robert Schlax	Joyce Stoneking	Art Wells
J. Burdette & Frances J. Nelson	E.J. & Betty Quilligan	Joan C. Schonig	Marsha Sutherland	Don West
Donald Neuen	Dr. & Mrs. Jerome Radding	Henry & Meryl Schrimmer	Kathy & Peter Tagni	Gregory A. White
James & Kimberly Neuhauser	Salim Rahemtulla	Cathy Schroder	Cecilia Tallichet	Pamela Whitesides
Rebecca Nevarez	Mr. & Mrs. Peter Rask	Molly & Michael Schwartz	Katie & Keith Tarantino	Lars H. Wiedermann
Jeri Nevins	Edward & Tricia Raymund	Roger Scilley/ Delight J. Lucas	Victoria Tashjian	Louise Wiese
Rowland Davis & Margot Norris	Dr. Francis & Muriel Reed	G.F. & Mary Shallenberger	Janet C. Taylor	Gordon Wiles
Patricia Novelli	John L. & Carolyn Reilly	B. James & Nancy Shapiro	Mr. & Mrs. Prentice Taylor	Arnold Wilken
Don & Gail O'Hearn	Peter & Geri Relich	Sydnee Shapiro	William & Ann Teachout	Judi Williams
Martin Olinger	Alice and Franklin Remer	Tony Shaw	Cynthia Thackara	Ritchie & Lesghinka Wilson
Gary & Marcia Olson	Deanna & Greg Repos	Robert & Barbara Shelton	Gretchen Thomson	Bill & Ruth Winberg
Keith Olwin	Frank Ricchiazzi & Borden Moller	Robert & Marlene Short	Nadia Thorp	David Winkle & Linda Conti
Pam Oravetz	Marilyn Richman	Maxwell & Judith Shuster, Jr.	Lois Tinger	Glenn E. & Maureen Witte
George & Sharon Orff	Dr. Donald Rickabaugh	James & Marie Siegel	Andrew Tomenchuk	Robert C. Wreisner
Eugene L. O'Rourke	Michael & Deborah Rider	Marilyn Silverman	Craig & Deborah Townsend	Karen Yamada
William & Nancy Otto	Linda Ritchie	Ms. Leslie Singer	Elizabeth Trowell	Barbara & Mike Yeargin
Claudia Owen	Theodore Robinson	Jackie Singer & John Pope	Vivian Trudell	Amy & Michael Yoder
Dr. Christine Padesky & Dr. Kathleen Mooney	Marilyn Rock	Valerie Sinkus	Jacques Vanders	Jennifer Yokoyama
Joseph Parker	Frank Rork	Jim & Mary Ann Slevcove	Vicki & Gordon Veal	Nancy Youngman
Phyllis Parkhurst	Linda Rose	Karen & Matthew Smith	Ms. Iris Veneracion	Frank Zelarney
Bruce & Mary Ann Patterson	Richard & Karen Rosenberg	Jan Snedegar	Forrest & Margaret Venz	Evelyn Zimmerman
Rodney Patterson	Gary Rothman	Richard Sneed	Roberta Vickrey	Tracy Zucker
Jeff & Sharon Pence	James & Mary Ellen Rourke	Ira & Lucy Snyder	Ira Victor	
	Cindy Runstrom	Harold W. Sorensen	Martin Voet	
		Judy & Meyer Soroudi	Chris & Charlie Vogelheim	

Matching Gifts

The following companies have generously matched their employee's gifts to the Laguna Playhouse. These matching gift programs, provided by many corporations, increase the amount given to the Playhouse by an individual. In many cases you can double or even triple your gift. Please check with your employer about its matching gift program.

AOL Time Warner	The Chubb Corporation	IBM	Sony Pictures
Avaya	The Coca Cola Company	The Irvine Company	Texas Instruments
Bank of America	Exxon-Mobil Corporation	Pfizer	U.S. Bancorp
Boeing	The Gap	SBC	Unilever
Capital Group Companies, Inc.			Yum! Brands

Gifts and Services In Kind

Agua Dulce Vineyards	Randy Gibbs	Jeff LeFever	Regal Wine Company
American Airlines	Golden Spoon Frozen Yogurt	Los Angeles Times	Rocky Mountain Chocolate
Bianchi Vineyards	Hamilton Oaks Vineyards	L.T. Litho and Printing Company	Round Hill Vineyards
Amicus Cellars	Hi Times Wine Cellars	Martin Family Vineyards	Rue de Chocolate
Beaches & Cream	Justin Vineyards	Jacque Moffett	Schmid's Fine Chocolate San Clemente
Chocolate Soldier	Ketel One Vodka	Nolet Spirits U.S.A.	Tom Swimm
Diedrich Coffee	Laguna Canyon Winery	O.C. Metro	Ste Michelle Wine Estates
Five Feet	James Koch	Premier Marketing	Synergistic Planning Corp.
Jay Fraley	Laguna Culinary Arts	Wendy Price	Verizon
			Wild Oats

Board of Trustees

Sophie Cripe, *President*
 James R. Mellor, *Past President*
 Westcott (Bill) Price,
President Elect/Treasurer
 Ilona Martin, *Secretary*
 Margaret L. Baldwin
 Andrew Barnicle
 Andrew Donchak
 Bill Gaboury
 Richard Schweickert
 Jeff Sharpe
 Richard Stein

Trustees

Wylie & Bette Aitken
 Claes & Georgia Andersen
 Wendy & Rick Aversano
 Margaret L. Baldwin
 Andrew & Sara Barnicle
 Fran Bass
 Mr. & Mrs. Donald Bendetti
 Ms. Jody Upham Billings
 Jane & Sean Browne
 Nancy Bushnell
 Suzanne Caffey & Terry McKenna
 William E. Callahan, Jr., M.D. &
 Clifton S. Meek II
 Donald S. Clurman
 Dr. & Mrs. Raymond Contino
 Don Crevier
 Sophie & Larry Cripe
 Nancy & Rod Daley
 Alison & Bob Davis
 Janet Dickson
 Salvatore DiMascio & Pauline
 Chilton
 Andrew & Lori Donchak
 Brian & Sadie Finnegan
 LaVerne Friedmann
 Bill & Marcia Gaboury
 Huguet & Andre Gaudreau
 Joan Gladstone & Ed Gillow
 Kurt Grosz
 John Gunnin
 Lisa H. Hale
 Jerry & Maralou Harrington
 Bill & Harriet Harris
 Cynthia Harriss
 Julie Burbridge-Hauck & David Hauck
 Otis & Barbara Healy
 George Heed & Martin Conlon
 Michael & Norma Helin
 Ms. Kim Herbert
 Nancy & Marcus Hiles
 Teri & Alan Hoops
 Traute R. Huycke

Sue & Ben Itri
 Julie Brinkerhoff-Jacobs
 & Donald Jacobs
 Don & Elizabeth Johnson
 Dr. and Mrs. George Kallins
 Ken & Jan Kaplan
 Link Lancet
 William A. Logan
 Dick & Maggie Murdy Lusk
 Victoria & Dale Madler
 Ilona W. Martin & Luis Marmol
 Maurice & Melinda Masson
 Deborah M. & Henry Mayhew
 Joy & Vincent J. McGuinness
 James R. & Suzanne S. Mellor
 Nancy & Michael Meyer
 Mike & Anne Morris
 Kurt T. & Gretchen Mulville
 Mr. & Mrs. Alexander Munro
 Michael L. Naples, CFM
 Sue & Dennis Parks
 Gordon Lamb & Greg Patterson
 Susan & William Pereira
 Sid & Nancy Petersen
 Mrs. Michael J. Peterson
 Karyn Philippsen
 Westcott (Bill) & Hillary Price
 Mary O'Brien-Pritchard & Less
 Pritchard
 Barbara Ramsey
 Mr. & Mrs. William H. Roberts
 Laura & Louis Rohl
 Miss Elinor Schmidt
 Sindi & Ronald Schwartz
 Richard & Betty Schweickert
 Gwynn & Jeff Sharpe
 Paul & Heather Singarella
 Rick & Alison Stein
 Keith & Judy Swayne
 Patricia Tartaglia
 John & Gail Ueberroth
 Ginny & Peter Ueberroth
 Stephanie & Ken VandeVeer
 Jon & Nancy Wagner
 Elaine & Martin Weinberg
 Jean & Tim Weiss
 Ken & Shirley Wentzel
 Sharon & Bill Wood
 Jim & Tish Wood
 Miki Young

Support Groups

Tami Morrison, Carrie Gustafson,
Co-Presidents
 Playhouse Parents Association

Richard Stein, *Executive Director* Andrew Barnicle, *Artistic Director*

Administration

Business Manager Kat Hickland
Systems Administrator Deborah Purnell
House Manager/Volunteer Coordinator Lee Prouty
Assistant Business Manager Angela Studley
Assistant Houses Manager San Dee Frei, Michelle Stillwell
Bartenders Jan Koelle, Scott Sheppard, Brian Tomczak, Chris Tomczak

Artistic

Resident Designer Dwight Richard Odle
Resident Lighting Designer Paulie Jenkins
Resident Sound Designer David Edwards
Dranaturg Sara Barnicle
Company Mgr/Casting/Props Coordinator Wally Ziegler

Development

Director of Development Jon Wagner, CFRE
Development Manager Amy Larson

Education

Director of Youth Theatre, Education & Outreach Donna Inglima
Instructors Karan Benton, Kelly Herman,
 Jane Hilary, Chris Villa, Pat Warren

Marketing

Director of Marketing Greg Patterson
Marketing Manager Christina I. Guzmán
Ticket Service Manager Andy Hedden
Ticket Service Representatives Diane Neill, Patti Quinn,
 Anna Couturier, Scott Sheppard (Weekend Manager),
 Michelle Stillwell, Bruce Smith, Janine Stankowski,
 Pamela Turner, Robin Woods

Production

Production Manager Jim Ryan
Technical Director Jerry Russell Stratton
Shop Foreman Dave Talbot
Master Electrician Glenn Powell
Master Carpenter Matt McKibben
Scenic Artist Chris Holmes
Wardrobe Supervisor Gabrielle Harwood
Carpenters Joseph Smith, Nate Yeoman
Stitchers Mary Bergot, Jennifer Hart, Maya Lash

Subscription Sales

Subscription Sales Manager Kyle Yandow
Sales Representatives Michael Bagley, Kathy Bonner, Lisa Costello,
 Clara Mae Collins, Ricky Goodrich, Berta Kang,
 Beverly Keppler, Suzanne Maris

The Laguna Playhouse ...is your theatre...

Joan's Theatre

"This is my theatre because I really love the intimacy. I feel close and involved. The work is eclectic, thought-provoking and truly original. I am never disappointed!"

Joan Gladstone
Laguna Beach



Clif & Bill's Theatre

"This is our theatre because art is the heartbeat of Laguna Beach and the Playhouse has an 80 year history of artistic excellence. As subscribers we get the best seats in the house and we never miss a show."

William E. Callahan, Jr., M.D.
Clifton S. Meek II
Laguna Beach



Jenelle's Theatre

"This is my theatre because I can enjoy a night out in beautiful Laguna Beach...each experience is so unique...dinner with friends before the show at a fabulous local restaurant...theatre chat over coffee at a nearby cafe after the show to discuss interpretation of the play we've just seen, stage design, music, costumes...I'm like a kid, I can't wait for each new show!"

Jenelle Meyer
Laguna Beach



Andy & Lori's Theatre

"This is our theatre because we love the top quality plays and the world premieres. To see something on stage for the first time is thrilling. The Playhouse is such a vital part of our community that it deserves our support."

Andy & Lori Donchak
San Clemente

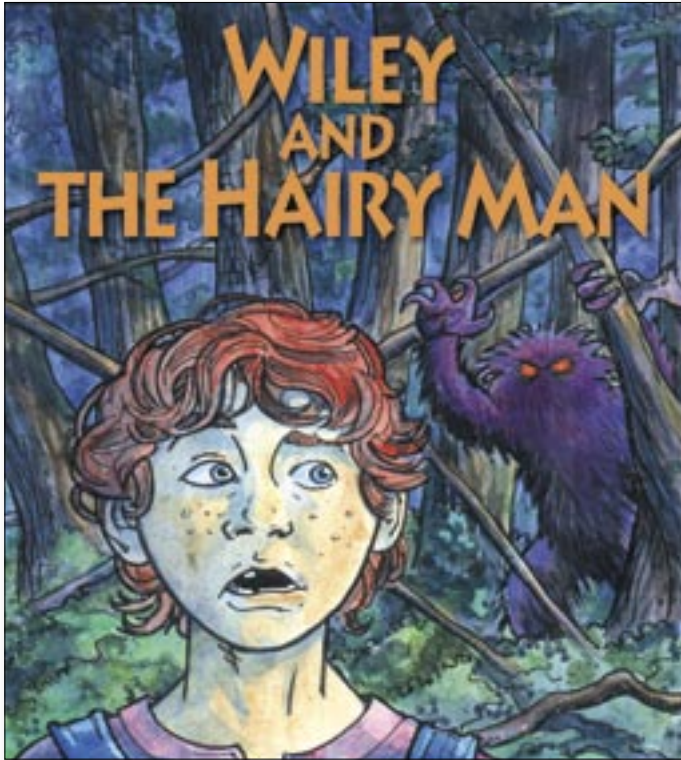


949.497.2787 ext.1 www.lagunaplayhouse.com

Discover why The Laguna Playhouse should be your theatre! Subscribe Today.



2 Outstanding Plays for Young Audiences A family series at family prices



Illustrations by Marcus Harris

Wiley and the Hairy Man

By Suzan Zeder

Based on the classic American folktale

Directed by Joe Lauderdale

October 28-November 6, 2005

We are bringing back one of the most popular plays ever produced on our Youth Theatre season! Deep within the mysterious Tombigee Swamp, Wiley's days and dreams are haunted by a frightening creature called the Hairy Man. Wiley's conjure-woman Mother tells Wiley that he will no longer be tormented by the Hairy Man if he can outwit him three times. So Wiley ventures into the swamp along with his faithful hounddog, because everybody knows that the Hairy Man can't stand hounddogs, and prepares for the confrontation. With the magic of the earth and mud of the swamp, Wiley learns to rely upon his own resources and conquers two villains—the Hairy Man and his own fear.

"Best New Musical –
2000 Olivier Award" (London)

Honk!

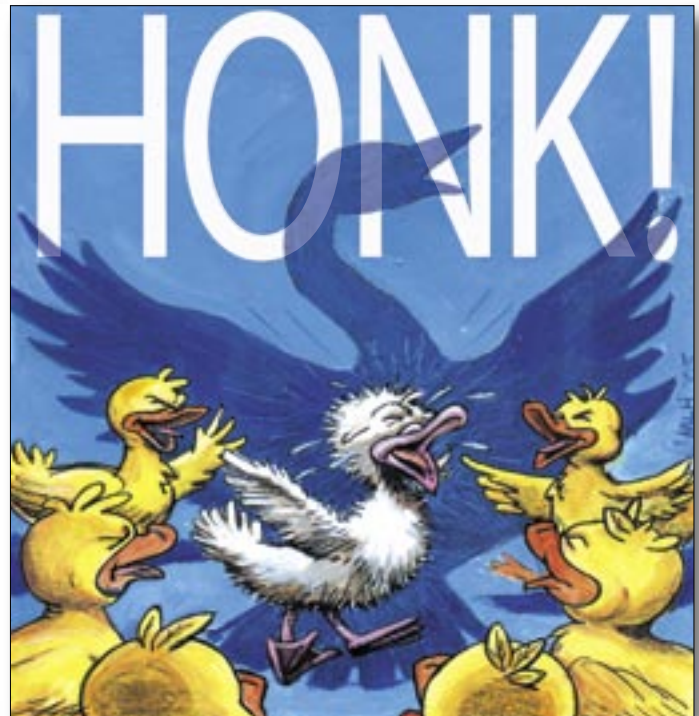
Book & Lyrics by Anthony Drewe

Music by George Stiles

Directed by Donna Inglima

March 31-April 9, 2006

Hans Christian Andersen's tale comes to life in this charming musical. It is the story of Ugly, whose odd, gawky looks instantly incite prejudice from his family and neighbors. Separated from the farm and pursued by a hungry Cat, Ugly must find his way home. Along his rollicking and harrowing journey he not only discovers his true beauty and glorious destiny, but also finds love and acceptance in all its forms.



Subscribe Now!

Call 949-497-ARTS

Online at Lagunaplayhouse.com

Laguna Playhouse 606 Laguna Canyon Rd. Laguna Beach, CA



The last great stretch of coastal property between Laguna and Newport Beach.


CRYSTAL COVE

The ocean is always with you.™

Dramatic custom homesites in the upper reaches of Crystal Cove.

(866) 843-3494 • www.irvineranch.com/crystalcove



Crystal Cove is a planned development by Irvine Community Development Company, a subsidiary of The Irvine Company®. All homes and lots are included in a Community Facilities District (CFD) and an Assessment District. The Irvine Ranch®, Close To Everything, Far From Ordinary® and, The ocean is always with you™, are trademarks of The Irvine Company.



The Irvine Ranch®
Close To Everything. Far From Ordinary.®

FASHION BY MAXMARA ©2005 SOUTH COAST PLAZA

our customers say
SOUTH COAST PLAZA IS DIFFERENT...
explore the difference

AGNONA
BURBERRY
BVLGARI
CARTIER
CHANEL
CHOPARD
ERMENEGILDO ZEGNA
FENDI
GIANNI VERSACE
GIORGIO ARMANI
GUCCI
HERMÈS
JIMMY CHOO
JOHN VARVATOS
LORO PIANA
LOUIS VUITTON
ROBERTO CAVALLI
SALVATORE FERRAGAMO
TIFFANY & CO.
VALENTINO
VAN CLEEF & ARPELS
YVES SAINT LAURENT

PARTIAL LISTING

Quality is

SOUTH
COAST
PLAZA

SAN DIEGO FWY (405) AT BRISTOL ST., COSTA MESA, CA
800.782.8888 WWW.SOUTHCOASTPLAZA.COM