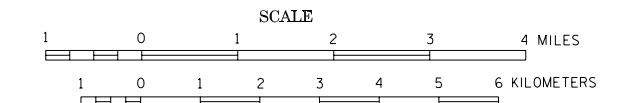


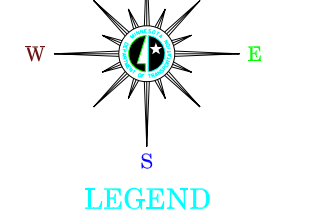
# GENERAL HIGHWAY MAP CARVER COUNTY MINNESOTA

PREPARED BY THE  
MINNESOTA DEPARTMENT OF TRANSPORTATION  
OFFICE OF TRANSPORTATION DATA & ANALYSIS  
IN COOPERATION WITH  
U.S. DEPARTMENT OF TRANSPORTATION  
FEDERAL HIGHWAY ADMINISTRATION

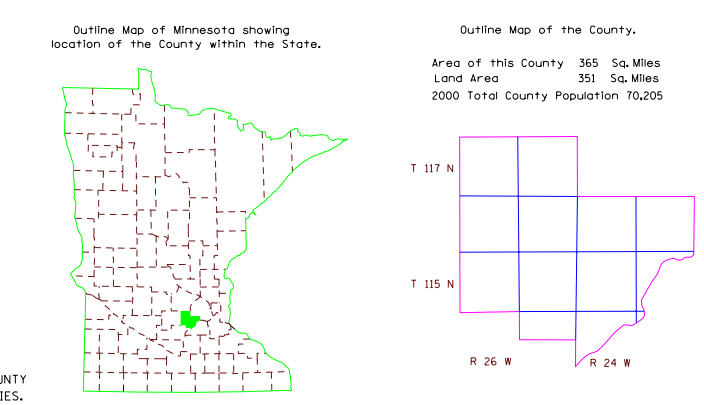
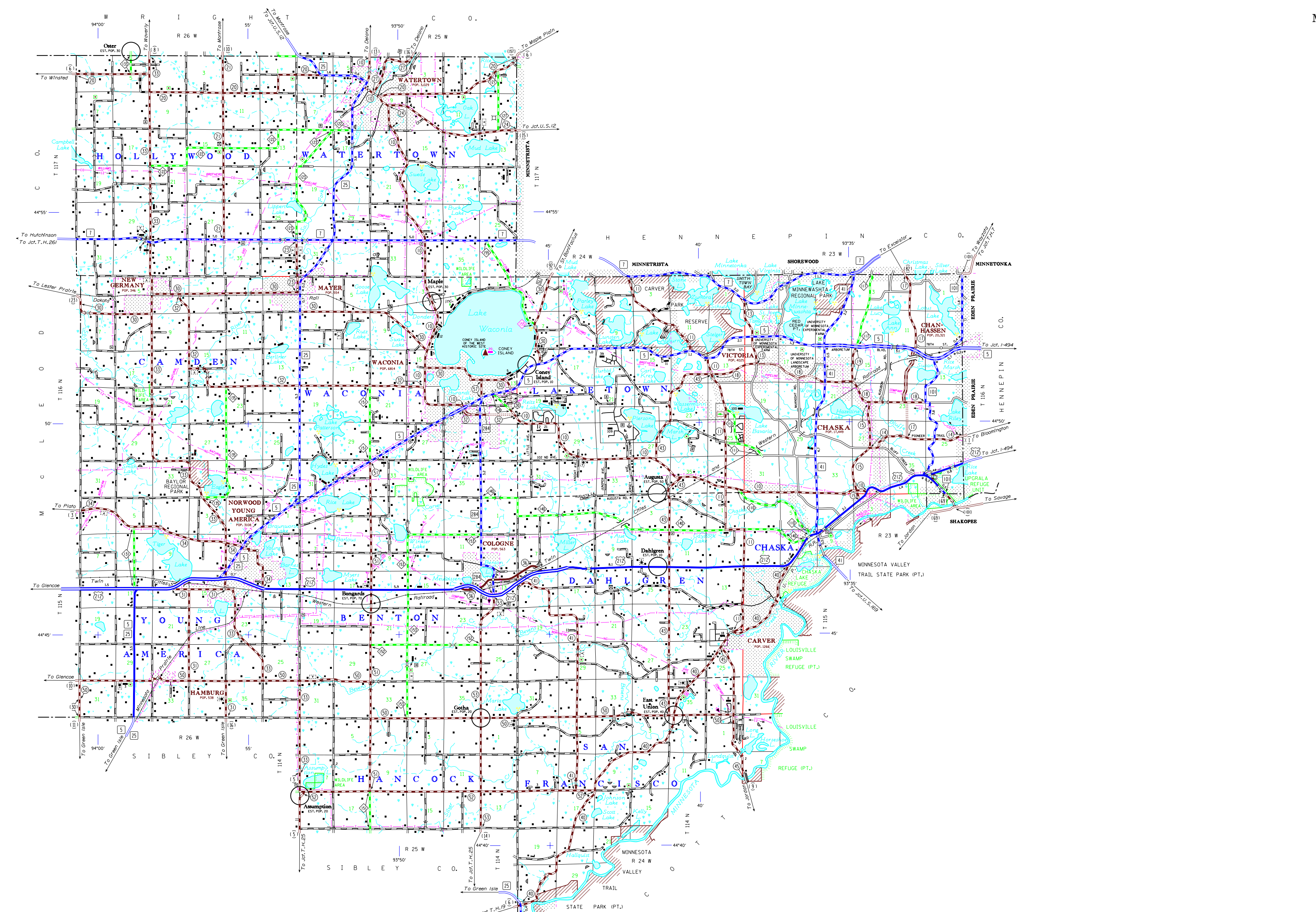


2005

BASIC DATA - 1991  
Projection: Minnesota Coordinate System South Zone  
North American Datum of 1983  
Lambert Conformal Conic



- |                                  |  |
|----------------------------------|--|
| <b>ROAD AND ROADWAY FEATURES</b> | <b>NAVIGATION</b>                        |
| PROJECTED ROAD                   | BANK LINES ON NATURAL STREAMS            |
| UNIMPROVED ROAD                  | SHIP LINES ON CANAL LINES                |
| GRAVEL AND SPARSE ROAD           | DOCK PIER OR LAUNING                     |
| GRAVEL OR STONE ROAD             | NAVIGABLE STREAM                         |
| PLUMBING ROAD                    | LANDMARK LIGHT BEACON                    |
| DIVIDED ROAD                     | LIGHTHOUSE                               |
| TRAIL ROAD UNDER CONSTRUCTION    |  |
| ROADS IN INCORPORATED PLACES     |  |
| ROADS WITHIN MUNICIPALITIES AND  |  |
| PROVINCIAL ROADS                 |  |
| POINTS BETWEEN ROAD DISTANCES    |  |
| AND ROADWAY DISTANCES            |  |
| ROAD SEPARATION                  |  |
| FULL TRAFFIC INTERSECTION        |  |
| PARTIAL TRAFFIC INTERSECTION     |  |
| INDICATING TRAFFIC MOVEMENT      |  |
|                                  |  |
| <b>ROAD SYSTEM DESIGNATIONS</b>  | <b>CONSERVATION</b>                      |
| INTERSTATE FROM HIGHWAY          | FOREST RANGE STATION                     |
| UNLabeled FROM HIGHWAY           | FOREST RANGE STATION                     |
| STATE NUMBERED FROM HIGHWAY      | NOT PERMANENTLY OCCUPIED                 |
| COUNTY STATE AID HIGHWAY         | GAME PRESERVE                            |
| COUNTY STATE AID IN              | SEPARATION OF LANDS                      |
| ADJACENT COUNTY                  | PROMINENT ELEVATION                      |
| TERMINATION OF DESIGNATED ROUTE  | PLANNED PARK OR STATE OF COUNTY          |
|                                  | MANICIPAL, STATE, OR COUNTY              |
|                                  | PUBLIC ACCESS POINT                      |
|                                  |  |
|                                  | <b>RECREATION</b>                        |
|                                  | GOLF COURSE OR COUNTRY CLUB              |
|                                  | ATHLETIC FIELD                           |
|                                  | PLAYGROUND                               |
|                                  | PUBLIC BEACH OR SWIMMING POOL            |
|                                  | CAMP SITE                                |
|                                  |  |
|                                  | <b>FARM AND DWELLING UNITS</b>           |
|                                  | FARM UNIT                                |
|                                  | DWELLING OTHER THAN FARM                 |
|                                  | BARRACKS OR DOMICILES FOR STUDENTS,      |
|                                  | WORKERS, SOLDIERS, ETC.                  |
|                                  | RECREATIONAL BUILDING                    |
|                                  | ROAD OR BRIDGE OF UNUSUAL CLOSELY SPACED |
|                                  | NUMBER INDICATES NUMBER OF EACH UNIT     |
|                                  | INDICATES LOCATION OF EACH UNIT          |
|                                  | SHOWS OUT OF POSITION                    |
|                                  |  |
|                                  | <b>INDUSTRIAL</b>                        |
|                                  | FACTORY OR INDUSTRIAL PLANT              |
|                                  | STORAGE TANKS, OIL OR GAS                |
|                                  | BEET SUMP                                |
|                                  | STORAGE FEEDLOT                          |
|                                  | DUMP                                     |
|                                  | WEEKLY CREAMERY OR CHEESE FACTORY        |
|                                  | WAREHOUSE                                |
|                                  |  |
|                                  | <b>COMMERCIAL</b>                        |
|                                  | STONE OR SMALL BUSINESS ESTABLISHMENT    |
|                                  | HOTEL                                    |
|                                  | RESTAURANT                               |
|                                  | TOURIST COURT                            |
|                                  | DRIVE-IN THEATER                         |
|                                  | MURKIN                                   |
|                                  | GREENHOUSE                               |
|                                  |  |
|                                  | <b>PUBLIC SERVICE FACILITIES</b>         |
|                                  | POST OFFICE                              |
|                                  | FIRE STATION                             |
|                                  | PUBLIC LIBRARY                           |
|                                  | LOCAL                                    |
|                                  | RAILROAD PORT OF ENTRY                   |
|                                  | RAILROAD STATION                         |
|                                  | NURSING HOME                             |
|                                  | HOSPITAL                                 |
|                                  | WELL                                     |
|                                  | CORRECTIONAL INSTITUTION                 |
|                                  |  |
|                                  | <b>CITY CENTERS</b>                      |
|                                  | COUNTY SEAT                              |
|                                  | CITY CENTER                              |
|                                  | INCORPORATED CITY - GENERALIZED          |
|                                  |  |
|                                  | <b>MISCELLANEOUS MAP FEATURES</b>        |
|                                  | CATHOLIC OTHER RELIGIOUS INSTITUTIONS    |
|                                  | CAMPUS WITH CENTER ADJACENT              |
|                                  | FARMHOUSE AND CONCRETE PREPARATION       |
|                                  | MONUMENT (SMALL)                         |
|                                  | GRAND PPT                                |
|                                  | PORT LANTERN CAMP OR MILITARY POST       |
|                                  | WELL                                     |
|                                  | CONGRESSIONAL TOWNSHIP ALLIANCE          |
|                                  | WELL                                     |
|                                  | WELL                                     |
|                                  | STATE PATROL SUBSTATION                  |
|                                  | DEPARTMENT OF TRANSPORTATION TRAVEL STOP |
|                                  | TOLL HOUSE, STATE POINT OF ENTRY OR      |
|                                  | WELL STATION                             |
|                                  | WELL HOUSE                               |
|                                  | WELL                                     |
|                                  | CRUDE OIL OR WATER                       |
|                                  | CRUDE OIL OR WATER                       |
|                                  | NATURAL GAS PETROLEUM PRODUCTS           |
|                                  | PIPELINE NATURAL GAS                     |
|                                  | PIPELINE PETROLEUM PRODUCTS              |
|                                  | PIPELINE CRUDE OIL                       |
|                                  | PIPELINE WATER                           |
|                                  | TRANSMISSION LINE OVER OR UNDER          |
|                                  | POWER PLANT                              |
|                                  | TRANSFORMER STATION                      |
|                                  | TRANSFORMER STATION                      |
|                                  | LOOKING UP THE TRANSMISSION SYSTEM       |
|                                  | LATITUDE AND LONGITUDE INTERSECTION      |
|                                  | HISTORIC STATE OR NATIONAL               |
|                                  | OPEN TO THE PUBLIC                       |
|                                  |  |



\*NOTES: ALL FEATURES EXCEPT TOWNSHIP ROADS AND CULTURE ARE CURRENT AS OF JANUARY 1, 2005.  
NOTES FOR DETAIL OF COUNTY STATE AID HIGHWAYS AND COUNTY ROADS IN INCORPORATED PLACES, SEE MAPS OF MUNICIPALITIES.