

Window Pane Seaman's Scarf

by *Hélène Chapados* exclusively for *Knit Picks*

Special Abbreviations:

T3B: Slip next st onto cable needle and hold at back of work, knit the next 2 sts from left-hand needle, then purl st from cable needle.

T3F: Slip next 2 sts onto cable needle and hold at front of work, purl the next st from left-hand needle, then knit the 2 sts from cable needle

C4B: Slip next 2 sts onto cable needle and hold at back of work, knit next 2 sts from left-hand needle, then knit sts from cable needle

Stitch Pattern:

36 stitches (18 sts repeat twice) and 18 rows.

Row 1, 5: Purl

Row 2, 6: Knit

Row 3, 7, 9, 17: *K4, (P2, K2) twice, P2, K4* repeat from * to * once more

Row 4, 8, 10, 16, 18: * P4, (K2, P2) twice, K2, P4* repeat from * to * once more

more

Row 11: *K4, P2, T3F, T3B, P2, K4* repeat from * to * once more

Row 12, 14: *P4, K3, P4, K3, P4* repeat from * to * once more

Row 13: *K4, P3, C4B, P3, K4* repeat from * to * once more

Row 15: *K4, P2, T3B, T3F, P2, K4* repeat from * to * once more

(Chart on following page)

Directions:

Cast on 36 sts. Knit the 18 rows of the pattern 5 times; then knit the first 6 rows again. Work in ribs (Knit 1, Purl 1) for 12 inches. Knit the 18 rows of the pattern 5 times; repeat the first 6 rows. Cast off. Gently block the two ends only, do not block the ribs.



Finished Sizes:

One size: 8" x 54"

Yarn:

Knit Picks *Panache* (40% Baby Alpaca, 20% Cashmere, 20% Silk, 20% Extrafine Merino; 68 yards/50 gms): Moss 23751, 5 balls.

Needles:

Size 10: Straight needles. Adjust needle size if necessary to obtain correct gauge.

Notions:

Cable Needle

Gauge:

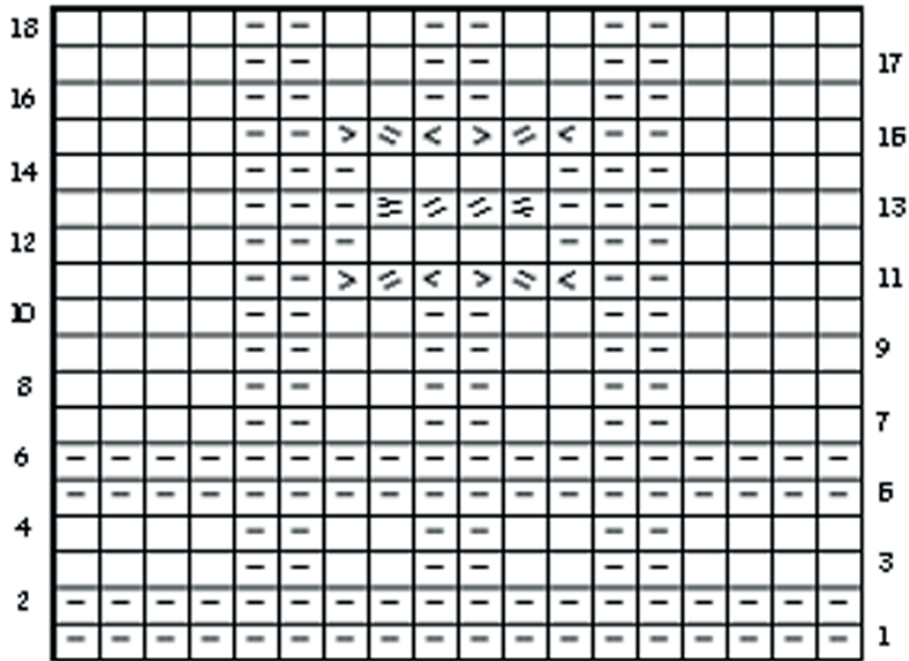
16 sts/20 rows = 4", in stockinette stitch unblocked. Check your gauge before you begin.

Revised 12/6/2005



50424

Stitch chart:



18 stitch repeat

 Knit on RS and Purl on WS

 Purl on RS and Knit on WS

 T3F

 T3B

 C4B

Abbreviations		cm	centimeter(s)	P, p	purl	skp	sl, k, pssso: 1 st dec
"	inches	cn	cable needle	p2tog	purl 2 sts together	sl	slip
()	rep inst bet ()'s as many times as noted afterward	CO	cast on	pat	pattern	sl st	slip stitch(es)
*	rep inst foll single * as directed	cont	continue	pm	place marker	sl1k	slip 1 kwise
**	rep inst bet **s as many times as noted after	dec	decrease(es)	pop	popcorn	sl1p	slip 1 pwise
[]	rep inst bet []'s as many times as noted after	dpn	double pointed needles	pr	previous row	SSK	sl, sl, k these 2 sts tog
alt	alternate	fl	front loop(s)	prev	previous	sssk	sl, sl, sl, k these 3 sts tog
approx	approximately	foll	follow(s)(ing)	pssso	pass slipped stitch over	st st	stockinette stitch
beg	begin/beginning	Inst	instructions	pwise	purlwise	sts	stitch(es)
bet	between	K, k	knit	R	row	tbl	through back loop
BO	bind off	k2tog	knit two sts together	rem	remain(ing)	tfl	through front loop
CA	color A	knitwise	knitwise	rep	repeat	tog	together
CB	color B	LH	left hand	Rev st st	reverse stockinette	WE	work even
CC	color C	lps	loops		stitch	WS	wrong side
		m	meter	RH	right hand	wyib	with yarn in back
		M1	make one stitch	rnd(s)	round(s)	wyif	with yarn in front
		MC	main color	RS	right side	yd(s)	yard(s)
		mm	millimeter(s)	sk	skip	yfwd	yarn forward
		ndl(s)	needle(s)	sk2p	sl 1, k2tog, pass slipped stitch over	yo	yarn over
		oz	ounce		k2tog: 2 sts dec	yon	yarn over needle
		P up	pick up and purl			yrn	yarn around needle