

TOLL-FREE 800-321-3310  
 IN OHIO 216-362-7500  
 FAX 216-362-0999

# ARMATURE COIL DATA



SWIGER COIL  
 SYSTEMS INC.  
 4625 MANUFACTURING RD.  
 CLEVELAND, OHIO 44135

Mfg. \_\_\_\_\_ Type \_\_\_\_\_ Frame \_\_\_\_\_ Form \_\_\_\_\_  
 HP/KW \_\_\_\_\_ Volts \_\_\_\_\_ RPM \_\_\_\_\_ Serial No. \_\_\_\_\_  
 Model \_\_\_\_\_ Style \_\_\_\_\_ Temp \_\_\_\_\_ Deg. c \_\_\_\_\_ Amps \_\_\_\_\_

1. Core outside diameter \_\_\_\_\_
2. Core length \_\_\_\_\_
3. Core to comm \_\_\_\_\_
4. Rear coil extension \_\_\_\_\_
5. Riser width \_\_\_\_\_
6. Riser depth \_\_\_\_\_
7. Riser diameter \_\_\_\_\_
8. Knuckle depth \_\_\_\_\_
9. Min. dia. rear support \_\_\_\_\_
10. Max. dia. rear support \_\_\_\_\_
11. Min. dia. front support \_\_\_\_\_
12. Max. dia. front support \_\_\_\_\_

Coil span 1 & \_\_\_\_\_  
 Wave or lap coil \_\_\_\_\_  
 Tin or bare leads \_\_\_\_\_

Throw direction:  
 Right hand coil   
 Left hand coil

Wire size \_\_\_\_\_ X \_\_\_\_\_  
 Wire size \_\_\_\_\_ X \_\_\_\_\_  
 Arrangement \_\_\_\_\_ X \_\_\_\_\_

Wires in hand \_\_\_\_\_  
 Strand insul & build \_\_\_\_\_  
 Number of turns \_\_\_\_\_  
 Number of slots \_\_\_\_\_  
 Number of comm bars \_\_\_\_\_  
 Coils per bundle \_\_\_\_\_  
 Coil weight \_\_\_\_\_ lbs./kg.

13. Top straight length \_\_\_\_\_
14. Bottom straight length \_\_\_\_\_
15. Pin depth \_\_\_\_\_
16. Overall coil length \_\_\_\_\_
17. Wedge/band depth \_\_\_\_\_
18. Coil space U/B U/W \_\_\_\_\_
19. Total slot depth \_\_\_\_\_
20. Slot width \_\_\_\_\_

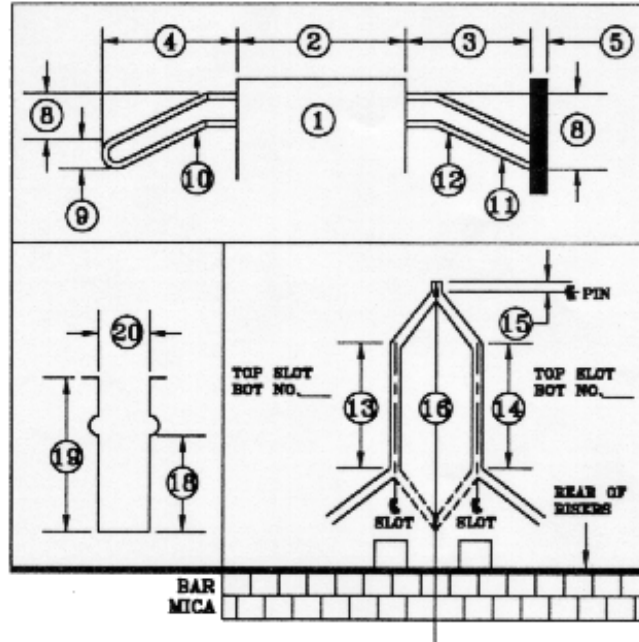
Your meas. were taken from an:  
 Insulated coil   
 Uninsulated coil   
 Data taken by \_\_\_\_\_

SPECIAL FEATURES (please circle) Winding supplies Skewed slot VPI coil  
 Dip coil Varnish filled coil

Insulation Class \_\_\_\_\_ Slot liner thickness \_\_\_\_\_

PLEASE PROVIDE US A SAMPLE ARMATURE COIL AND THIS DATA SHEET  
 Thank you for your coil business.

CF-1060.1



Coil lead span 1 & \_\_\_\_\_  
 Dead coil  yes  no

Equalizer type (please circle)  
 End of comm Rear knuckle  
 Involute riser Comm under winding

Equalizer span 1 & \_\_\_\_\_  
 Equalizer wire size \_\_\_\_\_ X \_\_\_\_\_  
 Number of equalizers \_\_\_\_\_  
 Equalizers weigh \_\_\_\_\_ lbs./kg.