



PROGRESS PAPAKURA

VOLUME ONE - OVERVIEW AND COMMUNITY PLAN

Papakura District Council Long Term Council Community Plan 2006 - 2016



Private Bag 7 Papakura
35 Coles Crescent, Papakura
Customer Services Centre 09 295 1300
Email: customerservices@papakura.govt.nz
www.papakura.govt.nz



Mayor's Welcome

Welcome to Progress Papakura, our Long Term Council Community Plan covering the period from 2006 to 2016. This Plan sets out a framework for the development of our District over the next ten years. Its impacts will be felt for many decades ahead, for the way we set the stage today will determine the shape of our District in the year 2050.

Progress Papakura is being developed at a time when our population is growing at more than two per cent each year. If we are bold and embrace this Plan, we will grow into a place that is keenly sought after in which to live. There is a base level of service which we are committed to maintaining. This enables us to continue to deliver all the services currently required of us and allows for increased expenditure in maintaining and reviewing infrastructure such as roads, footpaths and stormwater pipes. The recent draft version of Progress Papakura detailed this and then set out a range of optional "packages" that addressed key community aspirations identified through our recent consultation. Some of these packages call for substantial public and private sector investment and I am pleased to say there was strong support for all proposals.

Let me give you a picture of what our District could look like in the future. By 2016, three more new schools will have been established in our District. More than four thousand new homes will have been built, with most concentrated in Takanini and Hingaia. Housing densities will be greater than seen before in Papakura. New rail stations will have been built in the Town Centre, Takanini and Drury. We will have invested in land for new sports fields, the Pahurehure Inlet will have been opened up, and walkway development will be well underway.

By 2026, the Papakura Town Centre will be a busy retail precinct, a place of entertainment and cafes, a place connected to Central Park and Massey Park. Community events will be regularly staged. The District's sub-centres of Drury, Hingaia, and Takanini will provide community and retail services to their communities.



By 2050, our population will have more than doubled, to approach one hundred thousand. Our well planned investment in earlier years will make our District a great place for children to grow and families to thrive. This Plan sets us on our way.

It is important that we provide sound leadership in our community today in order to achieve great things for the future.

Over the next ten years, Progress Papakura:

- applies substantial resources to secure a healthier and more accessible natural environment on land and in our harbour;
- addresses in a systematic yet aggressive way the considerable deferred maintenance that is evident on our roads and in our stormwater networks;
- places a priority on the design of a family friendly and well connected built environment;
- promotes through investment in the arts, heritage and sports a strong sense of community and cultural pride;
- re-directs our District from being largely a dormitory suburb of Auckland to one that has a much stronger retail and commercial economic base;

Information on the key changes made to Progress Papakura after consultation are summarised in the CEO's message which can be found in Volume Two from page three.

Your Council has prepared this ten year Community Plan with the support of the community. This continued support is going to be even more important as we implement the plan to make Papakura a place "where families grow and children thrive".

A handwritten signature in black ink that reads "John Robertson". The signature is written in a cursive, flowing style.

John Robertson

Mayor, Papakura District Council

District Profile

He kupu tuatahi me wehi ki te Atua

Ngā maunga tapu, ngā wāhi tapu, ngā awa e rere iho, te moana, nga marae maha, ngā iwi me ngā hapū
Tēnā koutou katoa.

Ngā manaakitanga a te Kaihanga ki te Kuini Māori a Te Atairangikaahu me te Whare Kāhui Āriki

Ngā mate maha o ngā hau e whā, moe mai koutou i ō koutou moengaroa

Ko te hunga ora

Paimarire ki a koutou.



Papakura District has been inhabited for 1000 years or more. It has long been home to Māori belonging to Waiohua ki Waikato. Papakura is a relatively modern name for the area, and its origins are unclear. In early times the name was applied to the stream which forms a small part of the northern boundary between Papakura and Manukau.

The traditional name for the District is Wharekawa, while the site of the original European village of Papakura was known to Māori as Waipapa. The people of Wharekawa derived mana from their association with the Manukau Harbour and from Hunua, which provided all their needs.



Throughout New Zealand's human history, this area has been a gateway between the Auckland isthmus and the southern lands, a relatively narrow flat area of land through which traders, explorers and aggressors alike would pass on their way north or south.

Papakura's wooded hills and the pa Pukekiwiriki afforded quick and welcoming haven when local people found themselves confronted by aggressors from other areas. A coveted part of the "Manukau food bowl", Papakura has been for centuries a rich source of the avian, aquatic and traditional forest food sources that supported pre-European Māori society.

When they arrived, the first European settlers found the area a fertile base for agriculture and Papakura became both market garden and dairy to the Auckland region.

In the 19th Century, the region saw conflict between Māori and Pakeha – as did much of New Zealand. Both sides saw the area's strategic value as well as its potential for the agriculture and commerce that blossomed and developed throughout the century. To support the increasing trade with Auckland, rail links were built, water-based commercial freight transport boomed, and the Great South Road was developed as a main artery linking the Pukekohe/Bombay area with Auckland.

The 20th Century, brought significant development and progress at even greater pace. Papakura continued its role as an important market garden and gateway to Auckland, its value as a service centre for the rural community increased, and it became home to a range of major industries including dairy factories, quarries and a wide range of manufacturing businesses.

Its strategic significance meant it remained a focus for the military, with massive barracks established at Papakura Military Camp for training and provisioning Army forces, particularly during World War Two.

Likewise, Ardmore Airport, still the busiest in New Zealand, had military beginnings. Its two main runways were built by the RNZAF and it was an Air Force base until 1946. Now in private ownership, the airport supports a valuable group of specialist aviation businesses and thriving flying schools.

Equine business found a home in Papakura in the early days of the 19th century when horses were personal transport and the mainstay of the farm. Developments in the mid and late 20th Century saw a horse racing track and training facility established at Takanini and more recently a lucrative thoroughbred breeding and sales business has become established in the Karaka area.

Today, Papakura offers many things to all those who live, work and play here. It is a place of lifestyle and opportunity, one that offers families a stable and secure environment, and one that welcomes new business and the benefits they bring.

Our population is increasingly diverse, and growing quickly. Papakura has 44,000 people and we are planning for expected growth that will more than double this number over the next fifty years.

The people of Papakura are mostly European with a significant number of Maori and smaller populations of Pacific Island people and people of Asian origin.

The geography of the District encompasses fertile plains, the inlets and foreshores of the Manukau Harbour, and the rolling foothills of the Hunua Range. Papakura is 126 square kilometres in size and is just 32 km from downtown Auckland.

South of Manukau and Auckland cities, close to Auckland International Airport and with major road networks, excellent rail and motorway access, Papakura maintains its role as a gateway for travel and commerce to the north and south and has preserved much of the character of its origins, becoming an ideal place in which to live and to do business.

Lifestyles in the District are as diverse as its people with lifestyle blocks and countryside living through traditional suburbs to new ultra-urban housing initiatives like Addison in Takanini and the planned Hingaia development on the western side of the motorway.

Papakura has been fortunate to retain its friendly character and much of the classic Kiwi “town” feel as the greater Auckland area intensifies housing and many new developments adopt an urban-metropolitan character.

Almost 3,500 businesses are located in the Papakura District, employing just over 17,100 full time equivalent workers. The District is host to a wide range of established industries including dairy, quarrying, manufacturing, horticulture, the equestrian industry and aerospace businesses that serve the growing aviation activity based around the Ardmore airport.

Increasing pressure on available land closer to Auckland means Papakura will become an increasingly attractive option for new businesses.

A vibrant and thriving central business district is clustered around Great South Road with a diverse range of retailers already active and many new businesses becoming established, while a number

of major retailers have set up northwest of the Papakura town centre along Great South Road at Takanini.

Recreational opportunities are many, and Papakura can be rightly proud of its many parks and green areas, including Central Park and Massey Park near the town centre and Bruce Pulman Park.

At Massey Park, the District’s Aquatic Centre provides year-round fun for children and families and also offers serious swimmers excellent training facilities.

Massey Park is also home to rugby and athletics and features a large grandstand and floodlights for evening training or sporting activity.



Other parks cater to a wide variety of organised sports including soccer, softball and touch rugby.

Flying remains a popular pastime in the Papakura District. In addition to flying schools operating from Ardmore, a gliding club operates from a grassed airfield near Drury. A highlight for fans of aircraft old and new are the air shows held at Ardmore.

The many parks and green spaces of the District provide opportunities for less formal recreation – whether throwing a ball or Frisbee, walking the dog, or enjoying a picnic with friends.

Papakura is a diverse and welcoming District which is developing its own character with a dynamic and unique future.

It is truly the gateway to the Auckland region.

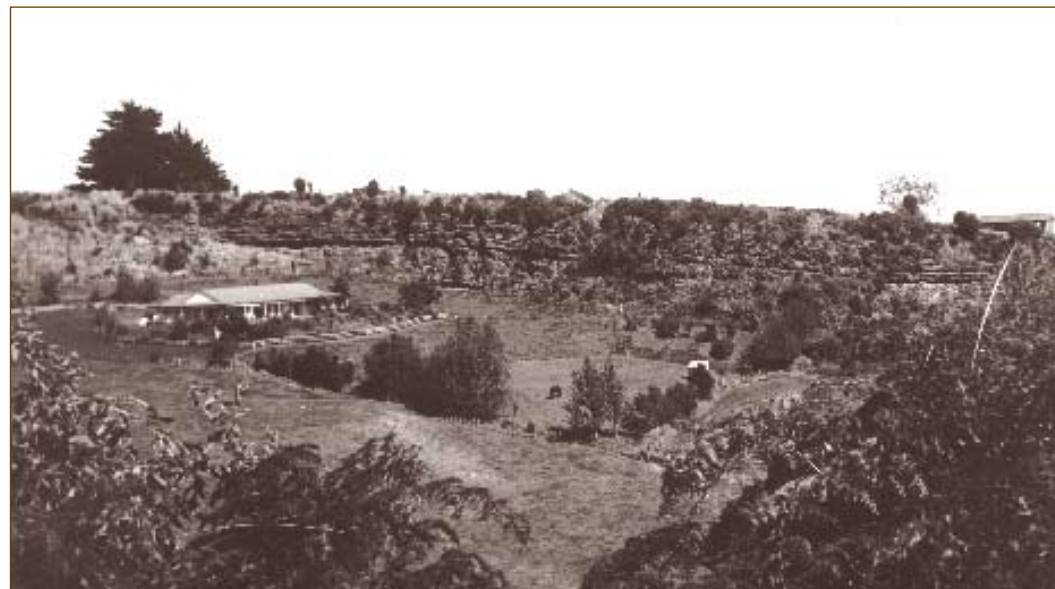
Pukekiwiriki or Red Hill is a taonga (treasure) of national and regional significance.

Pukekiwiriki means “The Hill of the Little Kiwi”. It is also known as “The Hill of Koiwiriki”.

One of the highest points in the hills that line the eastern edge of the District, Pukekiwiriki occupies a strategic location atop the eroded remains of a 1-million-year-old basalt volcano. Throughout the human history of the region, it has overlooked all activity on the flats of this narrow part of the Auckland isthmus.

When the volcano that formed this peak erupted along the line of the Drury Fault, scoria and ash were thrown out and lava flowed from the vent. Today, ash layers, red soils and remnants of lava flows underlie parts of Papakura and are the visible remains of this ancient volcanic activity.

The flat summit of Pukekiwiriki, surrounded on three sides by cliffs, provided an ideal position for the construction of a defended Māori pa. Its gently sloping northern side was defended by a ditch and bank topped by wooden palisades. Today, the remains of a number of man-made depressions within the pa identify the location of houses and rua (storage pits).



Volume One Contents

Section One

Mayor's Welcome	3
District Profile	5
Progress Papakura	11
How to read this plan	12
Strategies Framework	13
Progress Papakura Overview	14
Volume One: Community Plan	17
Interaction of Community Outcomes and specific Māori outcome themes	21

Section Two - Community Outcomes and Measures

Accessible and Cared for Natural Environment	22
A Safe and Stable Community	26
Fostering involvement in Arts and Recreation	31
Pride in our Community and Heritage	35
Town Centre as the Heart of our District	39
A Well Planned Built Environment	42
Healthy Lifestyles	47
Releasing the Potential of our Rangatahi	52
How Community Outcomes relate to other Strategic Documents	57

As a requirement of the Local Government Act 2002, this document has been audited by Audit New Zealand. Their full opinion can be found on page 6 in Volume Two of Progress Papakura.



Progress Papakura

AN OVERVIEW OF THE LONG TERM COUNCIL COMMUNITY PLAN 2006 - 2016

Progress Papakura is our Long Term Council Community Plan (LTCCP) for 2006-2016. Following is a summary of the information contained in each volume and an explanation of how each relates to the others.

Progress Papakura is divided into four sections. Volume One – the Community Plan – sets out how a wide range of organisations work toward outcomes the community is seeking; Volume Two sets out Council activities that meet outcomes identified by the community and its other statutory obligations. Volumes Three and Four contain supporting information relating to Council’s activities.

How to read this plan

VOLUME ONE: COMMUNITY PLAN:

This volume explains how we have gathered and recorded the community's desires for Papakura's future. It lists the key community outcomes that have emerged from talking with members of the Papakura community.

Our approach to achieving these outcomes has been to partner with other organisations, to build community ownership and to guide sustainable development of Papakura by promoting economic, social, cultural and environmental well-being of the District. We have identified and summarised the activities of larger organisations that contribute toward the achievement of these community outcomes. This volume is a record of what of what some agencies are already doing to achieve these outcomes. Of course, it doesn't stop here, and this volume also explains what we will be doing next.

VOLUME TWO: ACTIVITY STATEMENTS:

This volume describes all the major activities of Council including those that contribute to outcomes identified by the community and those required of Council by law. It identifies current and future issues including growth projections and demand likely to affect each area of activity. This volume also includes a brief overview of expected results for many activities and details of how these are to be measured where this is appropriate. Much of the Council's role in the next decade is driven by community feedback, though other activities are of course required of us by central government. Finally, this volume also includes the audit opinion on Council's LTCCP 2006 - 2016.

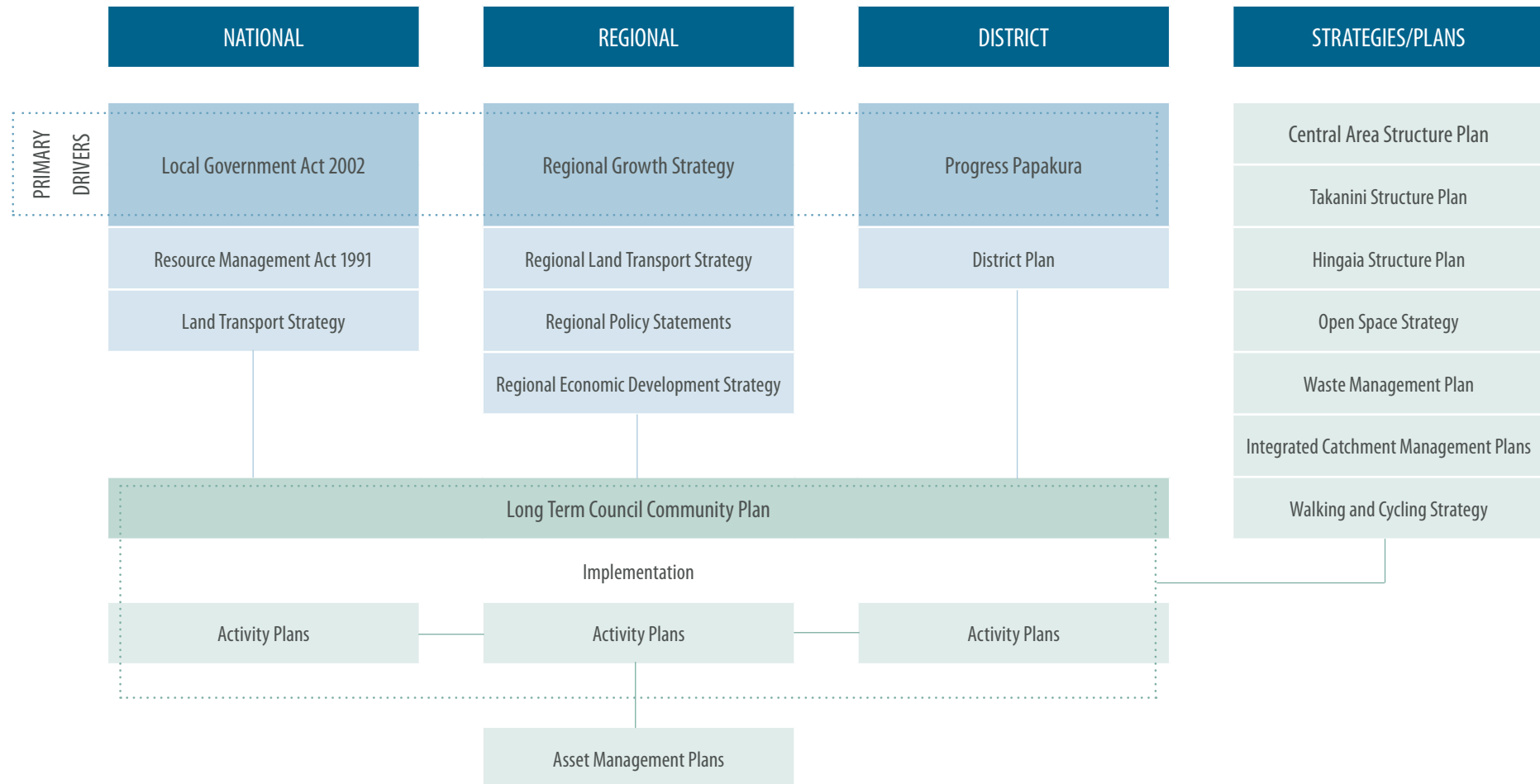
VOLUME THREE: FINANCIALS AND PROJECTIONS:

All activities undertaken by the Council have a financial impact on the Council and the community. Some of these are in response to what you have told us you would like to see done; others are carried out to meet our statutory responsibilities. This volume provides summary details of the Council's ten year financial projections. It also contains Council's accounting policies.

VOLUME FOUR: POLICY DOCUMENTS AND SUPPORTING STATEMENTS:

Contains the policies and background information that support and guide Council's planning and decision-making. Volume Four includes information on the development of Māori capacity to contribute to decision making.

Strategies Framework



Progress Papakura Overview

The Local Government Act 2002 creates a closer relationship between councils and other government agencies and the communities they serve. As part of this relationship, councils are required to consult with their communities on the future direction of their districts; and to produce a Long Term Council Community Plan (LTCCP) that maps key community outcomes and other activities proposed for the coming ten years.



Progress Papakura, our Long Term Council Community Plan, guides the development of the District and gives us a long-term framework for making decisions.

In order to build a successful and sustainable future for all the people of Papakura, we know we need to have a clear understanding of what people want for the future, and what we need to plan for as the District grows and prospers.

Through Progress Papakura, we want to give people the chance to take part in decision-making, and we want to promote community well-being through wise decision-making for the future. Progress Papakura describes what Council does, sets out the community's vision for the future, and helps make decisions more effective and efficient by creating a relationship between the community, the Council and other agencies.

In our plan, we also describe our involvement as a Sustainable Communities “demonstration project” as a member of the Auckland Sustainable Cities Programme together with the Department of Internal Affairs, Auckland Regional Council, Ministry of Social Development, the Counties-Manukau District Health Board and Te Puni Kokiri.



This project explored how best to reach out to the community and also how to draw together what people believe is most important for the future of Papakura.

It takes a broad view of achieving community outcomes, aiming to achieve better connections within the community, a healthy environment, greater prosperity and enhanced cultural expression. The demonstration project has helped us build a detailed and comprehensive Community Plan, which now forms Volume One of this plan.



What's next for Progress Papakura?

This plan outlines the Council's priorities for growth and development over the next ten years, and sets out the wishes and aims of the community for that same period. In many but not all areas, these aims, wishes and priorities overlap and mingle; though there will always be other activities Council has a statutory duty to deliver. To ensure it accurately reflects the views and vision of the people of the District and any changes in regulations governing, guiding and empowering local government, we will review and re-issue Progress Papakura every three years.

Volume One: Community Plan

This Community Plan is a record to date of the key outcomes identified during our discussions with the Papakura community, and a summary of the things that larger agencies are already doing that contribute toward the achievement of these outcomes.

The Community Plan has been developed as part of a partnership between Papakura District Council and the Sustainable Communities group, part of the wider Sustainable Communities workstrand of the Auckland Sustainable Cities Programme. Sustainable Communities has brought together the Department of Internal Affairs, Auckland Regional Council, Ministry of Social Development, Counties-Manukau District Health Board, Papakura District Council and Te Puni Kokiri.

Papakura District Council and Sustainable Communities see this Community Plan as a first version which we will continue to develop with the Papakura community in the coming years.

AUCKLAND SUSTAINABLE CITIES PROGRAMME

A regional partnership with the Sustainable Development Programme of Action





Under the name “Progress Papakura”, Sustainable Communities and the Council have joined forces to encourage community ownership and participation as we create a sustainable future for the District. Sustainable development means taking the broadest possible view of achieving community outcomes, which means we aim to achieve:

- A healthy natural and built environment
- Enhanced social links
- Greater economic prosperity
- Enhanced cultural expression

The first step was to ask the community to think about their top priorities for the District’s future.

We held a workshop in December 2004, inviting community leaders and government agency representatives to contribute to designing the process we should undertake to reach out to the community.

Leaders told us to ensure that we ask the young people of the district for their views as well as other sectors.

For the first part of 2005, we approached the community in a number of ways and gathered people’s ideas and views about what was important for Papakura and what they would like to see here in the future.

For young people we organised a children’s art activity, undertook a survey through the Youth Expo gathering opinions from more than 600 young people, and commissioned high school students to create videos of young people’s views. We gathered feedback from teenagers involved in a kapa haka group, and held hui-a-iwi for Māori. We ran an event for business people, and organised bus tours of the district for all interested people to join and talk to us about what they saw and what they want. We also ran a telephone survey and focus groups. From this feedback, we identified eight main themes, each with several points of common interest across Papakura’s communities.

These outcomes are:

- Accessible and cared for natural environment
- Safe and stable community
- Fostering involvement in arts and recreation
- Pride in our community and heritage
- Town centre as the heart of the district
- A well planned built environment
- Healthy lifestyles
- Releasing the potential of our rangatahi.

The Council and Sustainable Communities published these outcomes in a brochure in July 2005. We then approached the larger agencies, both government and non-government, who are active in Papakura and who are contributing to achieving these outcomes.

In the rest of this volume, for each outcome there is a table listing the activities that these larger agencies are currently doing towards these outcomes.

This is a starting point for looking at more opportunities for action and partnership across community, individuals, groups and agencies to achieve community well-being across social, cultural, economic and environmental areas, now and for the future.

Over the next year, we aim to build on this plan further. The next step is to engage and involve members of the community and community organisations. We will then produce an updated Community Plan by June 2007 that sets out the contributions of the community as well as central and local government to the achievement of the community's vision for Papakura.

We will be developing the targets for each measure as we find more information relating to these measures. While we must report progress every three years we also hope to produce a progress report annually.

Our approach under the Progress Papakura project is to build partnerships across organisations working for the Papakura district, to build sustainable development principles into what we do, and to encourage community ownership in shaping Papakura's future.

As part of its brief to engage the community, the project team is also setting out to build youth leadership, and is building involvement from various community sectors including Māori, business, community organisations and interested individuals.

We encourage everyone to take a holistic approach and to consider future as well as present needs.



Steps in the journey

Some aspects of this work have advanced more quickly than others, in particular work with Māori and around youth outcomes, where there has been valuable dialogue and the beginnings of measurable progress.

As part of the Progress Papakura Sustainable Communities demonstration project, a sub-group is focussing on engaging with the Māori community in thinking about what they want for their community and how this could be achieved.

The group includes representatives of the Department of Internal Affairs, Ministry of Social Development, Te Puni Kokiri, Counties Manukau District Health Board and Papakura District Council. Its role is to help co-ordinate the involvement of local Māori in Progress Papakura, and it has done so through interviews with key community members; through hui with rangatahi (youth) and with the iwi of the District.

The group is also working on how best to incorporate into Progress Papakura the outcomes, issues and priorities already identified by Māori. These are similar to, but not identical with, the broader community outcomes identified earlier.



Interaction of Community Outcomes and specific Māori outcome themes

PROGRESS PAKAKURA OUTCOMES

Accessible and Cared for Natural Environment

Safe and Stable Community

Fostering Involvement in Arts and Recreation

Pride in Our Community and Heritage

Town Centre as Heart of District

A Well Planned Built Environment

Healthy Lifestyles

Releasing the Potential of Our Rangatahi

MĀORI OUTCOME THEMES

Natural Environment

Social and Community Wellbeing

Economic Development

Decision Making

Cultural Wellbeing

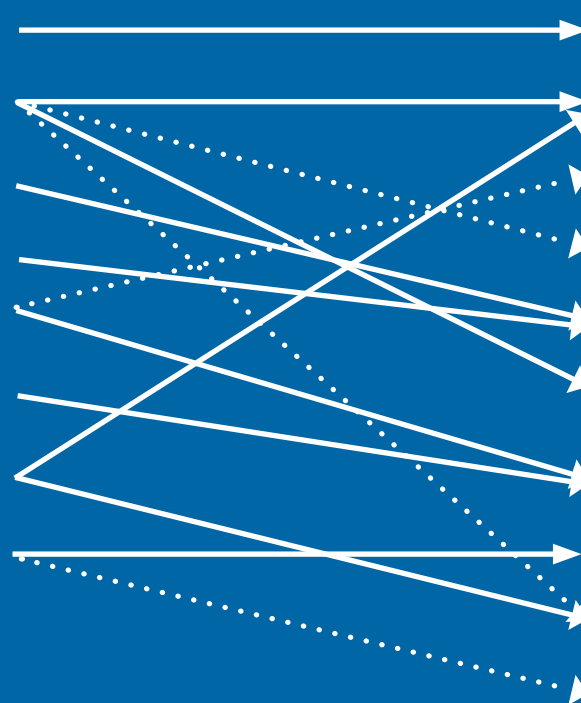
Community Services

Built Environment

Rangatahi

Health

Education





Accessible and cared for natural environment

Our natural environment is a major asset to the District. Papakura has a wealth of diverse environments, from the rugged hills of the Hunua ranges to the fertile Drury plains and the soft peat soils of Takanini. Small remnants of native bush still cloak inland hills, grassy rolling plains surround the urban areas – some of this area is still productive farmland; though it is much in demand from those who seek a country lifestyle but do not need significant land area. The District also touches the water, with the Pahurehure Inlet and parts of Manukau Harbour both highly regarded by the community.

You have told us that you appreciate and enjoy the natural environment of this District and that you want to have easy access to our water and forest areas. You also say that it is important for the community to protect and care for these areas and ensure they are accessible for future generations. The outcomes in this section seek to ensure access to our natural environment is maintained while making sure we enjoy our environment in sustainable ways to preserve it for future generations.

Community Outcome Activities and Measures

Here we identify community outcomes that affect the natural environment, and set out work underway to sustain our environment and to enhance access for recreation and other uses. The numbered outcomes below are those identified as priorities by the Papakura community. There are a wide range of activities that contribute to these outcomes, and we also identify ways of measuring progress toward achieving each outcome. Many groups and agencies are involved in this work, including Auckland Regional Council, Bruce Pulman Park Trust, Papakura District Council, Land Transport New Zealand, the New Zealand Police, and Auckland Regional Public Health Services.

Accessible and cared for natural environment

1 Appropriate recreational facilities are available around water and forest areas

Activity ¹	Agency
1.1 Coastal Management – protection of natural character, biodiversity, and management of human use and values	Auckland Regional Council
1.2 Coastal walkway development	Papakura District Council
1.3 Pahurehure Inlet Management Plan development	Auckland Regional Council / Papakura District Council

Outcome Measure	Target	Source
1.1 Percentage of residents satisfied with recreational facilities available around water and forest areas	60%	Residents' survey

2 There is sustainable recreational use of the natural environment

Activity	Agency
2.1 Environmental development of park and facility surroundings	Bruce Pulman Park Trust
2.2 Pahurehure Inlet Management Plan	Auckland Regional Council / Papakura District Council
2.3 Native bush remnant enhancement in Council reserves	Papakura District Council

1. All Activities are ongoing, except where specifically highlighted

Community Outcome Activities and Measures

Accessible and cared for natural environment

2 There is sustainable recreational use of the natural environment

Outcome Measure	Target	Source
2.1 Increase in native fish species prevalent in Pahurehure Inlet	Baseline to be set	Ecological survey
2.2 Increase in native fauna prevalent in Council reserves	Baseline to be set	Papakura District Council

3 Access to the natural environment and recreational opportunities is encouraged through integrated physical infrastructure (e.g. roading, walkways)

Activity	Agency
3.1 District Plan: Policies, objectives and rules in the District Plan	Papakura District Council
3.2 Resource consent process: ensuring that proposals requiring consent do not adversely impact access to the natural environment	Papakura District Council
3.3 Provision of infrastructural assets including access ways, walkways, footpaths, roading, cycleways. Maintenance of infrastructural assets	Papakura District Council
3.4 Provision of information for cycling to enhance accessibility of transport system by 2006	Papakura District Council
3.5 Establishing fully connected green corridors	Papakura District Council
3.6 Joint funding of infrastructure (including cycle facilities) (ongoing annual programmes)	Land Transport New Zealand

Outcome Measure	Target	Source
3.1 Establish green corridors linking esplanade reserves and walkways	One new linkage established per annum	Papakura District Council
3.2 Percentage of residents satisfied with access to the natural environment and recreational opportunities	60%	Residents Survey

Accessible and cared for natural environment

4 People take collective responsibility for the care of our natural environment

Activity	Agency
4.1 Prosecution of persons damaging natural environment	New Zealand Police
4.2 Coastal environment foreshore planting project	Papakura District Council Auckland Regional Public Health Services
4.3 Pollution Control: 24 hour emergency callout service for pollution emergencies	Auckland Regional Council
4.4 Enviroschool programme (active at Papakura Normal School and Opaheke School)	Auckland Regional Council
4.5 Big Clean Up – volunteer programme incorporating public awareness and action for the environment – several hundred members in Papakura	Auckland Regional Council
4.6 Trees for Survival programme – students planting trees on rural land	Auckland Regional Council
4.7 Public education on water quality issues in neighbourhood waterways and streams	Papakura District Council
4.8 Waste reduction/recycling education programmes including Create Your Own Eden, Second Hand Sundays, Construction Demolition minimisation project, school programmes, public awareness campaigns	Papakura District Council

Outcome Measure	Target	Source
4.1 Increased membership of ARC Sustainable neighbourhood programmes	5% increase per annum	Auckland Regional Council
4.2 Number of foreshore planting projects	1 per annum	Papakura District Council Auckland Regional Council
4.3 Number of schools with a Wastebuster Club (aimed at motivating children to reduce waste)	2006-7 – 6 schools; 07-08 – 10 schools; 08-09 – 13 schools	Papakura District Council
4.4 Number of WaiCare projects	1 additional per annum from 2008	Papakura District Council



A safe and stable community

A strong part of the appeal of Papakura is its strong sense of community. People greet each other in the street, neighbours chat over the fence and children grow and thrive in a secure environment. This District has a place for everyone – and it is a safer, more enjoyable place to live when this sense of community is maintained and enhanced, when we work together to make sure the things we value are sustained. When our priorities for a safe and stable community are obvious then people will choose to come and live here for the lifestyle; residents and visitors see Papakura as a clean and safe place to work and play and above all the District is truly a place where families grow and children thrive. You told us that you wanted the District to be a place where people feel safe and welcome and choose to stay long-term.

Things that you thought would help achieve this include working to make the District litter and graffiti free, ensuring that new housing developments are attractive and well-planned, and people have a sense that they can have a say in matters that affect their quality of life and local communities.

Community Outcome Activities and Measures

The numbered outcomes below are those identified as priorities for a safe and stable community in recent consultation. Here we identify activities that help build a safe and stable community through meeting these outcomes, and we also identify ways of measuring progress toward achieving each outcome. A range of groups and agencies are involved in this work, including Auckland Regional Council, Bruce Pulman Park Trust, Papakura District Council, Land Transport New Zealand, the New Zealand Police, Housing New Zealand, Te Puni Kokiri and the Department of Internal Affairs.

Safe and Stable Community		
1	Our physical environments enhance personal safety	
Activity		Agency
1.1	Development and promotion of safety standards for people, vehicles and roads.	Land Transport NZ
1.2	Development of safety management systems (2005/2006)	Land Transport NZ
1.3	Funding for Police land transport safety activity - National Land Transport Plan (NLTP)	Land Transport NZ
1.4	Funding for community road safety programme (via NLTP) (annual programme)	Land Transport NZ
1.5	Shared funding for road safety co-ordinator	Land Transport NZ Papakura District Council
1.6	Funding for ethnic community groups (annual programme for traffic safety)	Land Transport NZ
1.7	Protection of public from harm to persons or property	New Zealand Police
1.8	Encouraging Council and private business to adopt Crime Prevention Through Environmental Design (CPTED)	New Zealand Police
1.9	Community road safety co-ordination	Papakura District Council Auckland Regional Council
1.10	Regional road safety advertising programmes	Papakura District Council Auckland Regional Council
1.11	Crash studies and crash analysis system (Roading)	Papakura District Council Land Transport NZ
1.12	Crime prevention through environmental design principles are incorporated in the District Plan	Papakura District Council

Community Outcome Activities and Measures

Safe and Stable Community		
1 Our physical environments enhance personal safety		
Outcome Measure	Target	Source
1.1 Increased number of public reserves meeting CPTED principles	2 per annum	Papakura District Council
1.2 Percentage of residents who believe that Papakura is a safe place to live	Target 70% (10% increase from 2005-6 result)	Residents' survey
1.3 Number of road deaths and casualties per 10,000	Less than 31 (2005 result – 38)	Land Transport NZ
2 There is minimal graffiti and littering in the District		
Activity		Agency
2.1 Maintenance of litter and graffiti free environment		Bruce Pulman Park Trust
2.2 Co-operative waste minimisation projects including: HazMobile, PaintWise, WasteWise Schools, landfill consents		Auckland Regional Council / Papakura District Council
2.3 Graffiti by-laws		Papakura District Council
2.4 Improving the refuse and litter collection services		Papakura District Council
2.5 Target hardening of graffiti-prone public areas		Papakura District Council
2.6 Truancy services		Papakura District Council Ministry of Education
Outcome Measure	Target	Source
2.1 Reduce graffiti-prone targets in public areas	Hardening of four areas per annum	Papakura District Council
2.2 Percentage of residents satisfied with cleanliness of the District streets	75%	Residents' survey
2.3 Reduce tonnage of illegal dumping per annum	<240 tonnes per annum	Papakura District Council

Safe and Stable Community			
3	A range of quality housing in well-planned neighbourhoods is available throughout the District		
Activity			Agency
3.1	District Plan: use of zoning controls and zone changes	Papakura District Council	
3.2	Formal relationship to promote and deliver sustainable communities including the management of the current housing portfolio	Housing NZ Papakura District Council	
3.3	Development control: consideration of subdivision and development applications, modifications, and conditions	Papakura District Council	
3.4	Ensuring that building standards are complied with and that buildings are safe (inspection processes and consent processes)	Papakura District Council	
3.5	Definition, maintenance, and control of flood plain areas	Papakura District Council	
Outcome Measure		Target	Source
3.1	Percentage of residents satisfied that the District has quality housing in well-planned neighbourhoods	60%	Residents' survey
4	Residents demonstrate commitment to the long-term wellbeing of the District		
Activity			Agency
4.1	Facilitating new community-based initiatives to contribute to Outcomes	Papakura District Council	
Outcome Measure		Target	Source
4.1	Number of households participating in Neighbourhood Support groups	At least 5400	Papakura District Council
4.2	New community-based initiatives to contribute to Community Outcomes	2 new initiatives per annum	Papakura District Council
4.3	% of residents who have lived in Papakura for 5 years or more	Maintain at 2006 census level	Residents' survey

Community Outcome Activities and Measures

Safe and Stable Community			
5	People living and working in the District are aware of and can influence decision-making that affects the community		
Activity			Agency
5.1	Provision of advice and information on local government and local electoral systems (ongoing/triennial)		Department Internal Affairs
5.2	Advertising all Council meetings		Papakura District Council
5.3	Consultation meetings on issues widely available to the community		Papakura District Council
5.4	Provision of community development e-news.		Papakura District Council
5.5	Provision of a District newsletter to all households		Papakura District Council
5.6	Investment in regard to organisational infrastructural development, including governance and management, and policy and procedure		Te Puni Kokiri
Outcome Measure		Target	Source
5.1	Percentage of residents that are satisfied with the way Council involves people in key decisions	2006 – 80% (2005 result 79%)	Residents' survey
5.2	Percentage of residents who have participated in a decision making process affecting their community	15%	Residents' survey



Fostering involvement in Arts and Recreation

Arts, culture, sport, recreation: these are the binding forces that help us feel good about ourselves and our community. They record and reflect who we are and how we view the world around us, and they give us important and enjoyable ways of interacting with others outside our neighbourhood and work-day contact. Arts and recreation are also areas where Papakura people excel on a local, national and international level.

Arts and recreation are important to many people in the Papakura community.

You told us that there are good facilities in the District and you would like to see more of them. You also say that taking part in arts and recreational activities contributes to people's feelings of health and wellbeing and it is important that people of all ages and abilities have access to these opportunities.

Community Outcome Activities and Measures

Here we identify community outcomes that help to build involvement in arts and recreation and that enhance access to these activities. We detail the work underway to achieve these outcomes and identify ways of measuring progress toward achieving each outcome. The numbered outcomes below are those identified as priorities for arts and recreation in recent consultation. A range of groups and agencies are involved in this work, including Papakura District Council, Bruce Pulman Park Trust, Counties Manukau Sport, Department of Education, and Auckland Regional Council.

Fostering involvement in arts and recreation		
1	The District has well developed and maintained centres for arts and recreation activities	
Activity		Agency
1.1	Provision of facilities across the Greater Auckland Region which are accessed by Papakura residents (e.g. regional botanical gardens, Ericsson Stadium, regional parks)	Auckland Regional Council
1.2	Provision of quality library services within the District	Papakura District Council
1.3	Support for community-based arts providers and Papakura Art Gallery	Papakura District Council
1.4	Provision of a range of recreational facilities that meet community needs.	Papakura District Council
1.5	Development of Bruce Pulman Park	Bruce Pulman Park Trust as lead agency in development of park Papakura District Council
1.6	Development of Central Park (2006/2008)	Papakura District Council
1.7	Development of Massey Park	Papakura District Council

Fostering involvement in arts and recreation				
1 The District has well developed and maintained centres for arts and recreation activities				
Outcome Measure		Target		Source
1.1	Percentage of residents that use cultural and recreation facilities:	2005 results	Target	Residents' survey
	• Papakura Art Gallery	14%	20%	
	• Papakura District Community Arts Centre	7%	10%	
	• Library	54%	60%	
	• Hawkins Centre		20%	
	• Recreation Centre		20%	
	• Papakura and Districts Museum	16%	20%	
	• Aquatic Centre		20%	
1.2	Percentage of residents that are satisfied with the arts and recreation centres in the District	60%		Residents' survey
2 A variety of accessible and attractive places and opportunities for recreational activity cater for people of all ages and abilities				
Activity				Agency
2.1	Provision of longer outdoor pool season at Aquatic Centre			Papakura District Council
2.2	Ongoing sports and recreation programmes and activities			Bruce Pulman Park Trust Papakura District Council as second agency involved in this activity
2.3	Council events programme: including events such as Carols in the Park, Fireworks etc			Papakura District Council
2.4	Provision of monitoring and management programmes to ensure safety of recreational areas (eg water monitoring and improvement)			Papakura District Council
2.5	Provision of open space for positive recreation			Papakura District Council
2.6	Provision of new sports fields			Papakura District Council

Community Outcome Activity and Measures

Fostering involvement in arts and recreation

Outcome Measure	Target	Source
2.1 Number of community events taking place within the District per annum	Council is involved in providing or assisting to provide a minimum of 8 events per year	Papakura District Council
2.2 New barrier-free improvements to recreation and community facilities	1 per annum	Papakura District Council
2.3 Percentage of residents who believe that Papakura offers a variety of accessible and attractive places and opportunities for recreational activity for people of all ages and abilities	50%	Papakura District Council
2.4 Percentage of residents using Council reserves for recreational activity	30%	Papakura District Council

3 People are healthy through involvement in recreational activity

Activity	Agency
3.1 Development of Physical Activity Plan (current 2006) Implementation of Physical Activity Plan (ongoing)	Counties Manukau Sport Papakura District Council Bruce Pulman Park Trust Department of Education Counties Manukau District Health Board

Outcome Measure	Target	Source
3.1 Physical activity rates for Papakura residents will increase to match the national average	national average activity rates	Counties Manukau Sport



Pride in our community and heritage

Papakura has been inhabited for more than 1,000 years. Its geography is much modified as a result, yet every change has its own story to tell and forms a unique part of the story of the district. The paths trodden by those who lived here before us are in some cases long since lost; in other cases overlaid with those of more recent residents and visitors. This District has a long history of habitation by Māori, yet the casual observer would be hard pressed to identify many areas of great significance to the original inhabitants.

How many are aware that the Takanini area was once mainly peat swamp, and that it yielded massive swamp kauri logs and was even a source of the prized kauri gum in the 19th Century? Knowing and cherishing our history is part of developing an understanding of our present. We need a clear sense of who we are and where we have come from if we are to develop a sense of belonging and a respect for our surroundings. Papakura people say it is important for Papakura to have a clearly stated identity, and equally important for people to be proud to live here. Our history and heritage is important and should be recognised and protected. You have told us you want to see a stronger sense of ownership and celebration of our cultural heritage by residents of the District.

Community Outcome Activities and Measures

Here we identify community outcomes that help to build understanding and appreciation of our heritage and a strong sense of community among the people who now make Papakura their home. We detail the work underway to achieve these outcomes and identify ways of measuring progress toward achieving them. The numbered outcomes below are those identified as priorities to achieve these outcomes. A range of groups and agencies are involved in this work, including Auckland Regional Council, Papakura District Council, Department of Internal Affairs and Te Puni Kokiri.

Pride in our Community and Heritage

1 Papakura District has a strong and positive identity

Activity	Agency
1.1 Road naming policy – development of District identity through use of names associated with the District (policy 2005 / implementation 2006)	Papakura District Council

Outcome Measure	Target	Source
1.1 Percentage of residents who believe Papakura has a strong and positive identity	60%	Residents' survey

2 Our important cultural and heritage sites are known and protected

Activity	Agency
2.1 Environment and heritage funding	Department Internal Affairs
2.2 Heritage policy and advice	Auckland Regional Council Papakura District Council
2.3 Cultural and historic conservation including education and advocacy, identification and protection of historic sites through regulation. Provision of advice	Auckland Regional Council
2.4 Development of Pukekiwiriki Management Plan	Papakura District Council
2.5 Protection of historic buildings and sites through District Plan and Resource Consent processes	Papakura District Council
2.6 Management of areas of historical and cultural significance such as wells and springs	Papakura District Council

Pride in our Community and Heritage

2 Our important cultural and heritage sites are known and protected

Outcome Measure	Target	Source
2.1 Number of cultural and heritage resources formally protected through regional and District plans	15 resources	Auckland Regional Council Papakura District Council
2.2 Number of care groups and volunteers for cultural and heritage sites	2	Papakura District Council
2.3 Percentage of residents who are aware of two or more natural and cultural heritage sites	50%	Residents' survey

3 There is a sense of community pride and belonging among District residents

Activity	Agency
3.1 Volunteer recognition awards (annual)	Counties Manukau Sport Papakura District Council
3.2 Volunteer coach awards (annual)	Counties Manukau Sport
3.3 Sporting excellence awards	Counties Manukau Sport
3.4 Citizenship ceremonies	Papakura District Council
3.5 Garden competition (annual) Neat Street competition (annual)	Papakura District Council Papakura District Council

Community Outcome Activities and Measures

Pride in our Community and Heritage

3 There is a sense of community pride and belonging among District residents

Outcome Measure	Target	Source
3.1 Percentage of residents who are proud to live in the District	90%	Papakura District Council
3.2 Number of nominations for awards: <ul style="list-style-type: none"> • Volunteer recognition • Volunteer coach • Sporting excellence • Neat Street competition • Garden competition 	Increase in nominations received. (Baseline actuals and target % increases to be identified)	Counties Manukau Sport Papakura District Council
3.3 Percentage of residents who are satisfied with the quality of life in the District	2005 – 79%; target – 85%	Residents' survey

4 People in Papakura celebrate and support our cultural heritage

Activity	Agency
4.1 DIA funding advisors support for community cultural projects	Department Internal Affairs Papakura District Council
4.2 ANZAC Day ceremonies	Papakura District Council
4.3 Waitangi Day celebrations	Papakura District Council
4.4 Supporting Mana Whenua realise their potential	Te Puni Kokiri
4.5 Promotion of Māori Language Week to community	Papakura District Council



Town Centre as the heart of our District

Papakura is fortunate to have a town centre with such a diverse range of businesses, and one that also welcomes locals and visitors alike with areas where friends can meet and enjoy time together. The CBD features many buildings that evoke the heritage of the District, perfect homes for all kinds of retail activity. It is an essential hub for the community, one central place where so many interests and activities coincide. A focus for events and entertainment, and close by the District's excellent aquatic centre, its features include a commuter rail station, bus stops and the open green spaces of Massey and Central parks. Sustaining and enhancing this environment and adding fresh vitality to the area is a strong theme for the people of the District.

You have told us that it is important to sustain a lively and interesting town centre with a good variety of retail stores and areas that encourage leisure activities. You also say you want the town centre to be well planned and attractive to both local people and visitors so that it is even more of a focal point for the District. There's strong support for speciality and boutique stores in the town centre, while others are keen to see national chain stores in the CBD. Most of all, you want the town centre to develop into a vibrant and attractive place with an appealing mix of both niche and broad-appeal retail outlets that attracts both local shoppers and visitors from out of the District.

Community Outcome Activities and Measures

Here we identify community outcomes that focus on the town centre as the heart of the District. We detail the work underway to achieve these outcomes and identify ways of measuring progress toward achieving them. The numbered outcomes below are those identified as priorities in recent consultation. Papakura District Council is the main agency active in this outcome.

Town Centre as the Heart of our District

1 The Town Centre is vibrant and attractive

Activity	Agency
1.1 District Plan: Plan policies establish the Town Centre as the pre-eminent retail destination in the District	Papakura District Council
1.2 District Plan changes to encourage and support additional mix of uses (eg residential) in the Town Centre	Papakura District Council
1.3 Bylaws and policies implemented in the Town Centre to ensure safety and amenity	Papakura District Council
1.4 Town Centre cleaning increased	Papakura District Council

Outcome Measure	Target	Source
1.1 Residents' rating of the Town Centre as vibrant and attractive	70%	Residents' survey
1.2 Shoppers' rating of the Town Centre as vibrant and attractive	2004 – 6.2 out of 10; target 8 out of 10 (or higher)	CBD survey
1.3 Number of pedestrians and vehicles per hour in the Town Centre	2004 – 960 pedestrians, 850 vehicles; target – 5% increase	CBD survey
1.4 Percentage of residents satisfied with town centre opening hours	70%	Residents' survey

2 The Town Centre area has both a strong business presence and a variety of leisure opportunities

Activity	Agency
2.1 Town Centre promotion through Papakura Town Centre Association	Papakura District Council

Town Centre as the Heart of our District			
2 The Town Centre area has both a strong business presence and a variety of leisure opportunities			
Activity			Agency
2.2	Village Green playground refurbishment (2006)		Papakura District Council
2.3	Upgrading Central Park		Papakura District Council
Outcome Measure		Target	Source
2.1	Increase occupied retail floor space in the Town Centre	2004 - 39,060; target - 5% increase	CBD survey
2.2	Low Town Centre vacancy rate	2004 – 8%; target – less than 10%	CBD survey
2.3	Residents' rating of leisure opportunities in the Town Centre	70% express satisfaction	Residents' survey
3 The Town Centre has a distinctive identity embraced by residents			
Activity			Agency
3.1	Town Centre revitalisation projects: streetscape / road network / public facilities		Papakura District Council
Outcome Measure		Target	Source
3.1	Percentage of residents who believe the Town Centre has a distinctive identity	70%	Residents' survey
4 There is a mix of boutique and chain stores in the Town Centre			
Outcome Measure		Target	Source
4.1	Number of chain tenants in the Town Centre	2004 – 29; target – increase	CBD survey
4.2	Number of retail stores in the Town Centre	2004 – 227; target - increase	CBD survey
4.3	Shoppers' satisfaction with the mix of retail stores in the Town Centre	70% express satisfaction	CBD survey



A Well Planned Built Environment

Papakura is about to experience a period of significant growth. How we plan for and manage that growth to provide the services needed to maintain and enhance our standard of living here is going to be a constant challenge through the next ten years. The District's roads have coped well with current traffic levels and there is a programme to develop key "arterial" routes to ensure smooth flow of traffic into and out of the District as traffic levels increase; our stormwater ponds and drains are being upgraded to cope with the increased flows likely as new developments are completed; water supply and related services reliably provide services essential to living here. Continuing to provide these services as the District grows, we will also keep in mind the need to preserve the natural beauty and character of the District.

You have told us that good roading and transport networks are important to you. You also say you want to see new housing developments that encourage strong neighbourhood communities – well designed and appealing places where families and children are able to grow in a safe and stable community. While the storm water, roading and other assets managed by us on your behalf must of course work well, you also want to see the environment preserved and sustained – maintaining a balance between function and aesthetics in our environment.

Community Outcome Activities and Measures

Here we identify community outcomes that focus on maintaining and enhancing a well planned built environment for the District. We detail the work underway to achieve these outcomes and identify ways of measuring progress toward achieving them. The numbered outcomes below are those identified as priorities in recent consultation. Groups and agencies involved in this work are Auckland Regional Transport Authority, Papakura District Council and Housing New Zealand, Land Transport New Zealand and Auckland Regional Council.

A well planned built environment		
1 The District's infrastructure is sustainable and caters for the community's diverse needs and activities		
Activity	Agency	
1.1 District Plan: the Plan includes objectives, policies and rules to regulate development of the District so that different parts of the District provide for choice in uses of the land	Papakura District Council	
1.2 Development of a Business Location Strategy	Auckland Regional Council Papakura District Council	
1.3 Water resource allocation, monitoring of groundwater flows, and management with community of water demand	Auckland Regional Council	
1.4 Upgrading of stormwater devices to protect water quality (integrated with open space strategy to maximise community benefit and amenity)	Papakura District Council	
1.5 Development and upgrading of routes for walking and cycling	Papakura District Council	
1.6 Provision of open space areas	Papakura District Council	
1.7 Provision of recreational facilities	Papakura District Council	
Outcome Measure	Target	Source
1.1 Percentage of urban pedestrian crossings with enhanced facilities for those with visual or hearing impairment	60%	Papakura District Council
1.2 Percentage of residents satisfied with provision for pedestrians in rural areas	40%	Papakura District Council

Community Outcome Activities and Measures

A well planned built environment

1 The District's infrastructure is sustainable and caters for the community's diverse needs and activities

Outcome Measure	Target	Source
1.3 Percentage of residents satisfied with provision for pedestrians in urban areas	80%	Papakura District Council
1.4 Uninterrupted water supply and wastewater service	No significant interruptions to supply and service	Residents' survey
1.5 Percentage of residents satisfied with the delivery of stormwater services	75%	Residents' survey

2 New developments are designed to enhance people's quality of life, health, and social connectedness

Activity	Agency
2.1 Urban design initiatives	Papakura District Council
2.2 New HNZN developments are designed to promote quality of life through HNZN working in partnership with PDC and developers (e.g. Takanini development)	Housing New Zealand Papakura District Council
2.3 Use of Housing Innovation Fund to upgrade Housing for Elderly	Housing New Zealand Papakura District Council
2.4 Consent and inspection processes ensure that developments are designed and buildings are constructed to required standards	Papakura District Council

2 New developments are designed to enhance people's quality of life, health, and social connectedness

Outcome Measure	Target	Source
2.1 Number of initiatives undertaken in support of the urban design standards within the District	2 per annum	Papakura District Council
2.2 New walkways and cycleways	Increased length from 2005 distance	Papakura District Council

A well planned built environment		
3	Roading and public transport infrastructure is integrated and functions	
Activity		Agency
3.1	Contribution to Regional Land Transport Strategy (three yearly)	Land Transport New Zealand
3.2	National Land Transport Programme development and funding (via Auckland Regional Transport Authority) for: roading, passenger transport, rail, operations transport planning (annual programmes)	Land Transport New Zealand
3.3	Support of walking and cycling modes of transportation (funding)	Land Transport New Zealand
3.4	Contributions to Regional Land Transport Strategy, LTCCP/Annual Plans	Land Transport New Zealand
3.5	Land Transport Programme	Auckland Regional Transport Authority
3.6	Passenger transport network plan	Auckland Regional Transport Authority
3.7	Arterial roading plan	Auckland Regional Transport Authority
3.8	Auckland Regional Growth Strategy to manage growth for the region	Auckland Regional Council Papakura District Council
3.9	District Plan: Roading patterns and connections with public transport are established through District Plan changes	Papakura District Council
3.10	Upgrading and maintenance of the transportation infrastructure within the District including renewal and capital works programmes to improve capacity and safety	Papakura District Council

Community Outcome Activities and Measures

A well planned built environment

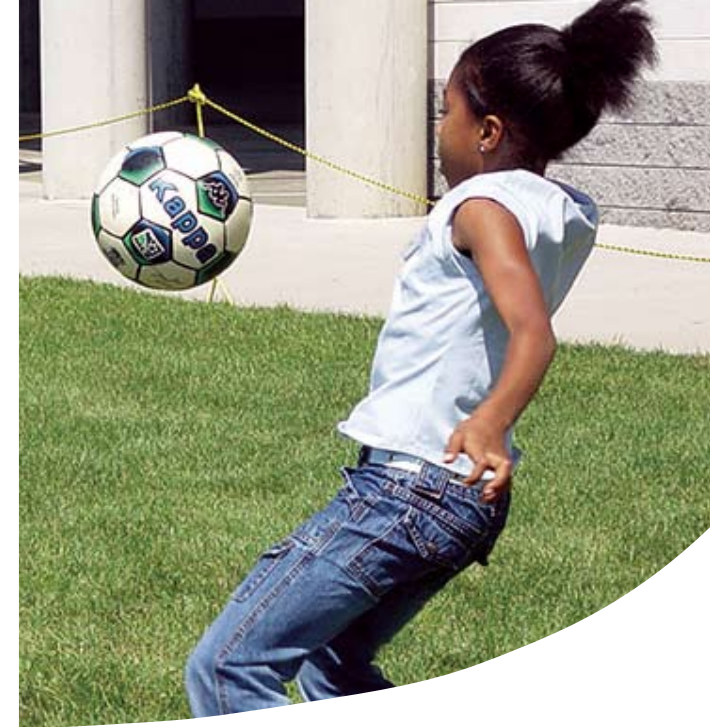
3 Roothing and public transport infrastructure is integrated and functions

Outcome Measure	Target	Source
3.1 Percentage of residents who are satisfied with the public transport service	2005 – 41%; target - 45%	Residents' survey
3.2 Growth in numbers using the train in the District.	5% pa increase	Auckland Regional Transport Authority
3.3 Percentage of residents who are satisfied with roads in the District	2005 – 52%; target - 70%	Residents' survey

4 Beauty and functionality are balanced in our built environment

Activity	Agency
4.1 Development of urban design initiatives	Papakura District Council
4.2 Development of well managed and maintained waterways	Papakura District Council
4.3 Riparian planting of stormwater ponds	Papakura District Council

Outcome Measure	Target	Source
4.1 Residents' satisfaction with how growth is being managed in the District	50% express satisfaction	Residents' survey
4.2 Residents' rating of sense of pride in the way the District looks and feels	50% express a sense of pride	Residents' survey



Healthy Lifestyles

A healthy lifestyle is part of everything we say and do. Being physically active, living in clean and healthy places, driving low emission vehicles or choosing public transport, having excellent quality drinking water on tap – all these are small elements in an overall theme of healthy living.

The links between physical activity and health – including mental health - are known to all. With such a wide range of parks and sports grounds around the District, and with so many sports clubs serving both young and old, Papakura already has many of the elements to promote a healthy lifestyle for all its people.

You told us you want Papakura to be a place where people are healthy in body and mind, and where it is easy to achieve this goal. You identify healthy living environments as important. You also say it's essential that people have unrestricted access to activities that foster personal health and well-being. Making it easy for people to access health services, and where required to use public transport to do so, is a high priority.

Community Outcome Activities and Measures

Here we identify community outcomes that focus on healthy lifestyles. We detail the work underway to achieve these outcomes and identify ways of measuring progress toward achieving them. The numbered outcomes below are those identified as priorities in recent consultation. Groups and agencies involved in this work are Papakura District Council, the Auckland Regional Transport Authority, Counties Manukau District Health Board, Counties Manukau Sport, Land Transport New Zealand, Auckland Regional Council, Ministry of Social Development and Bruce Pulman Park Trust.

Healthy lifestyles		
1 The way we plan and use our environment promotes healthy lifestyle choices		
Activity		Agency
1.1	Promotion of walking and cycling strategies	Land Transport New Zealand Papakura District Council
1.2	Reduction of vehicle emissions	Land Transport New Zealand
1.3	Air quality – regulations, policy, advocacy, pilot programmes for emissions testing and public education to improve air quality for the region, to reduce air pollution’s adverse human health effects	Auckland Regional Council
1.4	Building and Environmental Health activities ensuring the safety and healthy design (eg insulation) of housing and commercial buildings	Papakura District Council
1.5	Provision of open space that is capable of being used for physical activity	Papakura District Council

Outcome Measure	Target	Source
1.1	Accessibility of open space reserves to residential properties	100% of properties within 400 metres and sized not less than 0.35 ha Papakura District Council
1.2	People choosing active transport; • walking and cycling • walking school bus programme	5% increase per annum Papakura District Council Auckland Regional Transport Authority

Healthy lifestyles		
2	People have access to and are encouraged to participate in a range of activities that promote personal health and wellbeing	
Activity		Agency
2.1	Offering involvement in recreational and competitive sporting activities	Bruce Pulman Park Trust
2.2	Let's Beat Diabetes Programme (2005 - 2010)	Counties Manukau District Health Board
2.3	Active Living programme	Counties Manukau Sports
2.4	Sports Development programme	Counties Manukau Sports
2.5	ACC Sportsmart Programme	Counties Manukau Sports
2.6	Papakura Physical Activity Plan development	Counties Manukau Sports Papakura District Council
2.7	Family Violence Intervention Programme	Ministry of Social Development
2.8	Provision of a range of recreational and relaxation activity opportunities through parks and reserves, library and sports facilities etc	Papakura District Council
2.9	Ensuring that businesses requiring licenses (eg food preparation and sale) are assessed and licensed appropriately and that they operate within the required standards	Papakura District Council
2.10	Provision of education programmes in regard to licensed premises	Papakura District Council
2.11	Active transport promotion (walking and cycling options, walking school bus programme, school travel plans)	Papakura District Council

Community Outcome Activities and Measures

Healthy lifestyles

2 People have access to and are encouraged to participate in a range of activities that promote personal health and wellbeing

Outcome Measure	Target	Source
2.1 Reduction of incidence and impact of diabetes	Reduction in current numbers	Counties Manukau District Health Board
2.2 Participation in Counties Manukau Sports programmes; <ul style="list-style-type: none"> • Active Living Programme • Sports Development Programme • Coaching Development Programme • ACC Sportsmart Programme 	Increase in participation Increase in attendees Increase in offered programmes Increase in attendees	Counties Manukau Sports

3 People and communities have access to a range of appropriate health services and resources

Activity	Agency
3.1 Access to health services (providers)	Counties Manukau District Health Board
3.2 Access to health services (transportation – including public transport)	Counties Manukau District Health Board
3.3 Health and nutrition workshops	Counties Manukau Sports
3.4 Sports opportunity (promoting physical activity for people with special needs)	Counties Manukau Sports
3.5 He Oranga Poutama (Māori physical activity initiative)	Counties Manukau Sports
3.6 GRX programme (Green prescription)	Counties Manukau Sports

Healthy lifestyles		
3 People and communities have access to a range of appropriate health services and resources		
Outcome Measure	Target	Source
3.1 Percentage of residents who believe they have satisfactory access to health services and resources	50%	Residents Survey
3.2 Increase access to services so they align with national levels	Decrease the proportion of services which are below the national access levels	Counties Manukau District Health Board
3.3 Improve access to and management of elective services	Decrease the number of patients who have not been managed according to their assigned status and who should have received treatment	Counties Manukau District Health Board
3.4 Increase primary care utilisation	Increase the age standardized rate of GP and nurse consultations for PHO enrolled populations for high needs people (Māori, Pacific or living in decile 9 or 10 area) compared with non-high needs people	Counties Manukau District Health Board
3.5 Improve the continuum of care for services provided to older people	Increase the ratio of older people receiving home based care to the number of people	Counties Manukau District Health Board
3.6 Increase participation on Counties Manukau Sports programmes; <ul style="list-style-type: none"> • He Oranga Poutama (Māori physical activity initiative) • Sports Opportunity (promoting physical activity for people with special needs) • Health and nutrition programme • Green Prescription programme 	Increase in participation Increase in participation Numbers receiving satisfaction from programme	Counties Manukau Sports



Releasing the potential of our rangatahi

Our population has a significantly greater number of young people than most other parts of New Zealand. In business, sport, the arts and more, young people shape the future of our District and of the country. The school-age individual of 2006 will mature to become a young adult during the scope of this plan. Helping young people develop their skills and abilities and encouraging them to see themselves as valued members of the community are crucial to the ongoing success of society. Recognising the relevance of a youth perspective and giving careful consideration to their points of view on issues and opportunities affecting the community is part of this process.

You told us that you see supporting the development of young people in the District as a priority. As part of that, you say access to a good education and quality work opportunities within the District is essential if we are to encourage our young people to continue to work and live in the District. You say having good adult role models is important and that young people need ways to express their ideas; equally, that young people need access to good facilities and events that encourage them to take part in leisure, cultural and sporting activities.

Community Outcome Activities and Measures

Here we identify community outcomes that focus on releasing the potential of our rangatahi – our young people. We detail the work underway to achieve these outcomes and identify ways of measuring progress toward achieving them. The numbered outcomes below are those identified as priorities in recent consultation. Groups and agencies involved in this work are the Tertiary Education Commission, Ministry of Education, Department of Internal Affairs, Counties Manukau Sport, Papakura District Council, Bruce Pulman Park Trust, Ministry of Youth Development, Te Puni Kokiri, Ministry of Social Development, Land Transport New Zealand and Progress Papakura.

Releasing the potential of our rangatahi		
1	A range of quality educational and vocational opportunities are available to our youth	
Activity	Agency	
1.1	Youth based driver licensing courses	Land Transport New Zealand Papakura District Council
1.2	Funding for training programmes and providers	Tertiary Education Commission
1.3	Identification and planning for new school sites	Ministry of Education Papakura District Council
1.4	Papakura Youth Works (Youth Transition Service)	Papakura District Council Tertiary Education Commission Ministry Social Development
Outcome Measure	Target	Source
1.1	Employment success for youth training programmes	Percentage of participants gaining employment Tertiary Education Commission

Community Outcome Activities and Measures

Releasing the potential of our rangatahi

2 Youth development is supported by role models and mentors

Activity	Agency
2.1 Youth worker training	Department Internal Affairs
2.2 Sports ambassador / Sports Leader programmes	Counties Manukau Sport
2.3 Youth Leadership programme (Jones 7)	Progress Papakura (Demonstration Project)

Outcome Measure	Target	Source
2.1 Increase number of youth workers	Number of youth workers	Department Internal Affairs
2.2 Secondary school students undertaking sports ambassador/sports leader programmes	Maximum participation on programmes	Counties Manukau Sport
2.3 Number of youth leadership programmes in District	Number of youth participating in youth leadership programmes - 25 per annum	Papakura District Council
2.4 Number of schools and educational training institutions offering education/training to 13-25 year olds in the District	Baseline – regional average	Ministry of Education
2.5 Percentage of school leavers with (highest) qualifications	Baseline – regional average	Ministry of Education
2.6 Percentage of school leavers without any qualification	Baseline – regional average	Ministry of Education
2.7 Satisfaction with range and quality of educational and vocational opportunities	60% of residents express satisfaction	Residents' survey

Releasing the potential of our rangatahi			
3 Quality facilities and events encourage youth participation in recreation and leisure activities			
Activity			Agency
3.1	Provision of facilities and programmes for sporting activity		Bruce Pulman Park Trust
3.2	Active School initiative		Counties Manukau Sport
3.3	Physical activity programme provision for Alternative Education groups and training courses		Counties Manukau Sport
3.4	Papakura Skate Parks Project		Counties Manukau Sport Papakura District Council
3.5	Provision of a range of recreational and leisure facilities throughout the District (including library services, aquatic centre, skate parks, sports fields)		Papakura District Council
Outcome Measure		Target	Source
3.1	Percentage of residents who believe there are sufficient things for young people to do in the District	2005 – 32%; target – 50%	Residents' survey
3.2	Percentage of young people who believe there are sufficient things for young people to do in the District	70%	Survey of young people
3.3	Schools enrolled in Active Schools initiative	Maximum participation by all schools	Counties Manukau Sport
3.4	Library facilities attract youth	Increase in number of issues from Library's youth collection	Papakura District Council
3.5	Provision of facilities and programmes for sporting activity	Increase in number of programmes and activities	Bruce Pulman Park Trust Papakura District Council

Community Outcome Activities and Measures

Releasing the potential of our rangatahi

4 Youth initiatives within the District are encouraged and supported

Activity	Agency
4.1 Supporting youth initiatives	Ministry of Youth Development
4.2 Supporting cultural initiatives for rangatahi	Te Puni Kokiri

Outcome Measure	Target	Source
4.1 Number of new youth driven initiatives	Number of initiatives per annum	Papakura District Council Ministry of Youth Development Te Puni Kokiri Ministry Social Development Department Internal Affairs

How Community Outcomes relate to other Strategic Documents

The Council has adopted the community outcomes of Progress Papakura as the high-level framework for its planning. All other Council plans, policies and processes are developed to reflect the community outcomes. This cyclic process is illustrated in the following chart.





Private Bag 7 Papakura
35 Coles Crescent, Papakura
Customer Services Centre 09 295 1300
Email: customerservices@papakura.govt.nz
www.papakura.govt.nz