

**APPENDIX A**  
**CATALOGUE OF SAN ANDRÉS CERAMIC FIGURINES**

This catalogue describes each of the figurine heads, torsos, and animals. A general description and examples of limb fragments are also provided. For each image of heads, torsos or animals, the following information is given:

- 1.) Identification code - This code is for my tally of the numbers of the figurine parts and to provide a unique identification designation for each figurine specimen. Each identification code begins with a letter followed by a number. The letters represent the following: H=Head, T=Torso, L=Limb, A=Animal, and U=Unidentifiable.
- 2.) Provenience - Unit/Level or Feature
- 3.) FS # = Field Specimen number
- 4.) Unit, Level, Depth
- 5.) Feature number (if applicable)
- 6.) Dimensions: L=Length, W=Width, T=Thickness
- 7.) Munsell color code and color description
- 8.) Ceramic phase

### Molina Phase (1400-1200 BC)

Six figurine fragments emerged from the Molina levels, roughly 2 percent of the San Andrés figurine assemblage. One completely fired limb fragment (L-135), possibly an arm, was found in Unit 8 in dark silty clay. It is solid with a light gray color (10YR 7/2). A lower leg fragment with a foot (L-136) was found in association with this limb fragment. The leg fragment is solid and is almost completely fired. Its color is a pinkish gray (7.5YR 7/2). Another fragment, U-29, was found in a Molina level mixed with some Early Puente materials. U-29 is a solid, almost completely fired fragment with a pinkish gray color (7.5YR 6/2). Two fragments (U-39 and L-173) were found in the deep levels of Unit 1. They are associated with Feature 18, from which fragments of a burned tecomate and squash seeds were recovered. One of the two fragments, L-173, is a figurine leg that appears to have folds of skin (Figure A.1). The fleshiness and proportions of the leg suggest that it may be that of an infant.

L-173

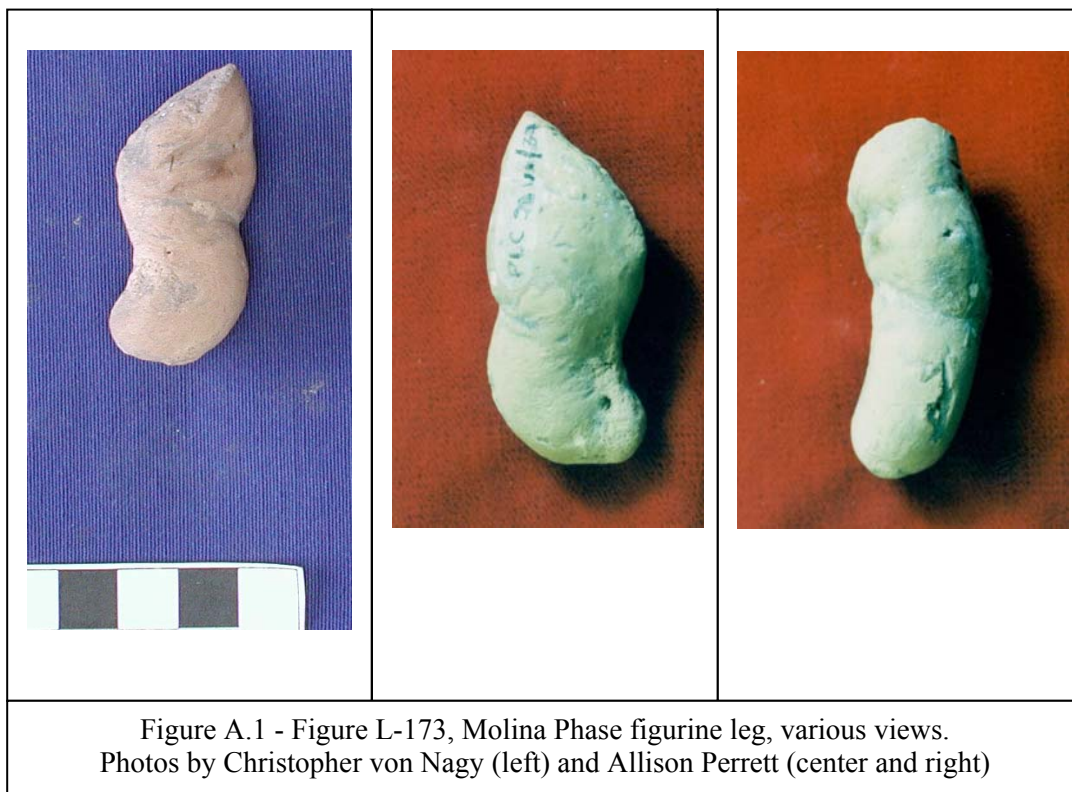
U1/37

FS#: 897

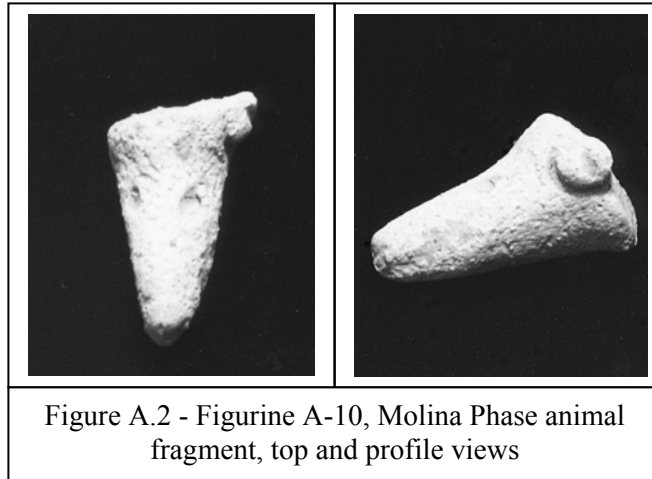
Unit 1, Level 37, 520-535 cmbd

5 cm (L), 3.2 cm (W)

Molina Phase



A-10  
U7/F5-16  
FS#: 524  
Unit 7, 255-275 cmbd  
Feature 5-16  
3.2 cm (L), 1.7 cm (W),  
1.9 cm (T)  
10YR 7/2, light gray  
Molina Phase



The sixth figurine fragment, A-10, (Figure A.2) from the Molina levels is a solid animal fragment from Unit 7, Feature 5. It is a bird beak with the left eye still attached and two shallow punctations on the top of the beak. The eye is a round pellet appliqué with a slit in the center. It was incompletely fired with a fine sand temper.

## Early Puente Phase (900-750 BC)

The Early Puente levels yielded 7 figurine fragments, which include 1 head fragment, 2 torsos, and 4 limb fragments. These fragments account for about two percent of the total number of figurines.

### Early Puente Head

H-14

U1/F12ext.

FS #: 686

Unit 1, 190-255 cmbd

Feature 12 extension

2.6 cm (L), 2.4 cm (W), 1.5 cm (T)

7.5YR 7.5/2, pinkish white

Early Puente Phase



Figure A.3 - Figurine H-14, Early Puente Phase face fragment

A face fragment, Figurine H-14, was found in the Early Puente levels of Unit 1. The fragment is solid and incompletely fired with a fine sand temper. The bottom half of the face is present, with a small, round chin. The nose is triangular in shape and raised with punctated nostrils. The mouth has a subtle line to indicate the top lip with a bottom lip protruding out. The corners of the mouth are punctated. A partial right eye is present (the inner half only) indicated by a slit. The gender is indeterminable because the top and sides of the head are not present to indicate garments or ornamentation.

## Early Puente Torsos

T-08

U 1-S/18

FS #: 456

Unit 1-S, Level 18, 160-170cmbd

4.2 cm(L), 5.0 cm (W), 1.6 cm (T)

7.5YR 7/4, pink

Early Puente Phase



Figure A.4 - Figurine T-08,  
Early Puente Phase figurine torso

Torso T-08 is a solid fragment of the top half of a torso. Although breasts are minimally apparent, the torso is pinched high in the waist, indicating that it is most likely female (see Chapter 3 on gender). A shallow incision is present on the left side to indicate a nipple, with a faint incision evident on the right side. A round appliqué is present on the chest to indicate a pendant, most likely a mirror (see Chapter 3, Figure 3.8). It is incompletely fired and has a fine sand temper.

T-31  
U7/10  
FS#: 432  
Unit 7, Level 10, 170-190cmbd  
8.2 cm (L), 4.5 cm (W), 2.6 (T)  
10YR 6/2, light brownish gray  
Early Puente Phase



The other Early Puente torso, T-31, is also a female torso and is one of the more complete torsos in the entire San Andrés collection. Figurine T-31 emerged from Level 10 of Unit 7, which is a level with Early Puente materials mixed with some Late Puente materials. The right shoulder and both thighs are present. This particular torso has full breasts with no nipples indicated. The navel is made with a large and deep punctation. An incised vertical line, representing the *linea gris* or gray line (Guillén, 1993:213), runs along the middle of the abdomen and through the navel. The *linea gris* is usually an indication of a woman having given birth. During pregnancy, the line (called the *linea nigra* - Eisenberg et al. 1991:178) becomes darker due to hormonal changes in the body, particularly in women with darker complexions. After pregnancy, the color of the line usually fades to a light gray. Thus, figurine T-31 may represent a woman who has given birth. Below an incised horizontal line on the lower abdominal area, a pubic "Y" or triangle is present. The waist is pinched below the breasts. On the back of the torso, a vertical groove is present in between fairly developed buttocks. The torso has a fine sand temper and is incompletely fired.

The remaining Early Puente fragments (L-44, L-49, L-53, and L-167) are limb fragments. Three fragments are solid, incompletely fired, and are tempered with fine sand. L-44 is pink (5YR 7/4), along with L-49 (5YR 7.5/4), and L-53 is reddish yellow (5YR 6/6) in color. The fourth limb fragment (L-167) has not been analyzed.

### **Late Puente Phase (750-700 BC)**

Forty-four figurine fragments emerged from the Late Puente levels. The fragments consisted of the following: 5 heads, 3 torsos, 27 limbs, 2 animal fragments, and 7 unidentifiable fragments (U-11 to U-15 and U-32). The Late Puente figurines are roughly fourteen percent of the total figurine collection at San Andrés.

#### **Late Puente Heads**

H-10  
U1/North Side  
FS #: 350  
Unit 1, "Ceramic Midden"  
7.2 cm (L), 5.0 cm (W), 1.0-1.8 cm (T)  
7.5YR 6/4, light brown  
Late Puente Phase

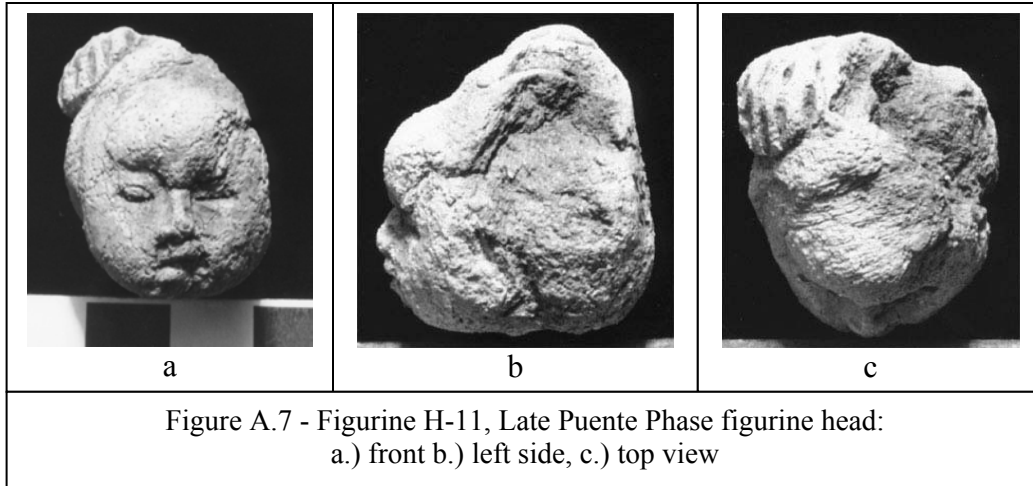


Figure A.6 - Figurine H-10, Late Puente Phase figurine ear fragment

Figurine H-10 is a head fragment of an ear and partial neck. The fragment is from a hollow figurine, incompletely fired, and with a fine sand temper. The ear is realistic showing the cartilaginous detail and circular structures of the human ear. A punctation on the earlobe is present.

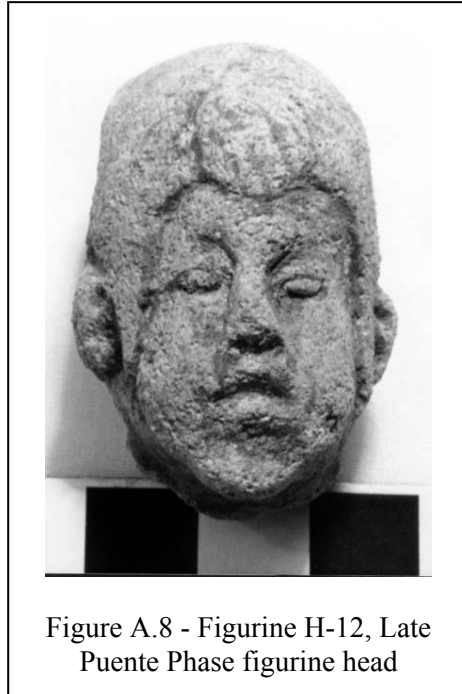


H-11  
U1-N/F9  
FS #: 491  
Unit 1-North, 210-220 cmbd  
Feature 9  
3.3 cm (L), 2.4 cm (W), 2.8 cm (T)  
10YR 7.5/2, light gray  
Late Puente Phase



Figurine H-11 is from Feature 9 of Unit 1. The head is solid with a fine sand temper and is incompletely fired. The left side of figurine H-11 is broken off, but the rest of the head appears to have indications of hair, and a bun sits on the top right side marked with striations. Because of the hairstyle, this head is probably female. The back is undeveloped. The shape of the face is round with full cheeks. The forehead has a lump and the brow ridge is distinct, giving this particular figure an appearance of illness or injury. These characteristics, which are not present in the figurines at La Venta, are unique to the San Andrés collection. The right eye is slit in an oval shape, making the eye appear swollen or closed with the eyelid exposed. The left eye is a simple slit and also appears swollen or injured. The nose has a distinct bridge with the right nostril present. The mouth is incised and downturned, with the lower left side broken off. Ears or adornments such as earspools or beads are absent.

H-12  
U1-N/F9  
FS #: 510  
Unit 1-North, 218 cmbd  
Feature 9  
4.2 cm (L), 2.3 cm (W), 1.8-2.5 cm (T)  
5YR 7/4, pink  
Late Puente Phase



Figurine H-12 was also found in Feature 9 on the northern half of Unit 1. Another head (Figurine H-13) and an arm fragment were found in association with this head. Figurine H-12 is solid, has a fine sand temper, and is incompletely fired. The head has an inverted U shape framing the face, which may indicate the hairline. Or it may be wearing a turban with ornamentation, possibly a shell, jewel or mirror, in the forehead area. These characteristics may indicate that this is a female head. The face is oblong with a slightly pointed chin. The ears have two punctations, the nose is raised with lightly punctated nostrils, and the mouth is incised downwards. The eyes are incised into an oval shape with no pupils. Two ridges above the upper eye area are present. The shell or bead ornament on the turban has horizontal striations on it. This head is similar to one from La Venta (Drucker 1952: Plate 28-g).

H-13  
U1-N/F9  
FS #: 510  
Unit 1-North, 218 cmbd  
Feature 9  
2.5 cm (L), 1.9 cm (W), 1.8 cm (T)  
7.5YR 7/4, pink (light brown)  
Late Puente Phase



Figure A.9 - Figurine H-13, Late Puente Phase figurine head

Figurine H-13 was found in association with Figurine H-12. It is unlike any of the other heads at San Andrés because it is unfired, has no temper, and is crudely made. The lack of temper in the clay caused this figurine to crack while it was drying after excavation. Indications of hair or head garments are absent, which makes its gender indeterminable. The shape of the face and the facial characteristics appear distorted. The nose is wide and flattened and the lips are thick, almost swollen-looking. The asymmetrical eyes are slit horizontally but at a slight angle. The overall appearance of this figurine gives the impression of an injured or deformed individual. A fingerprint was found on the bottom of the head, which Warren Barbour has identified as a female fingerprint (personal communication, 2000).

H-15  
U3/11  
FS #: 852  
Unit 3, Level 11, 120-130 cmbd  
3.1 cm (L), 2.8 cm (W), 2.4 cm (T)  
7.5YR 5/2, brown  
Late Puente Phase

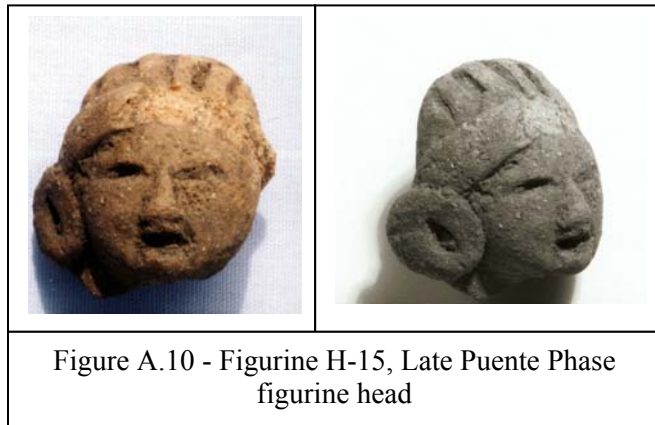
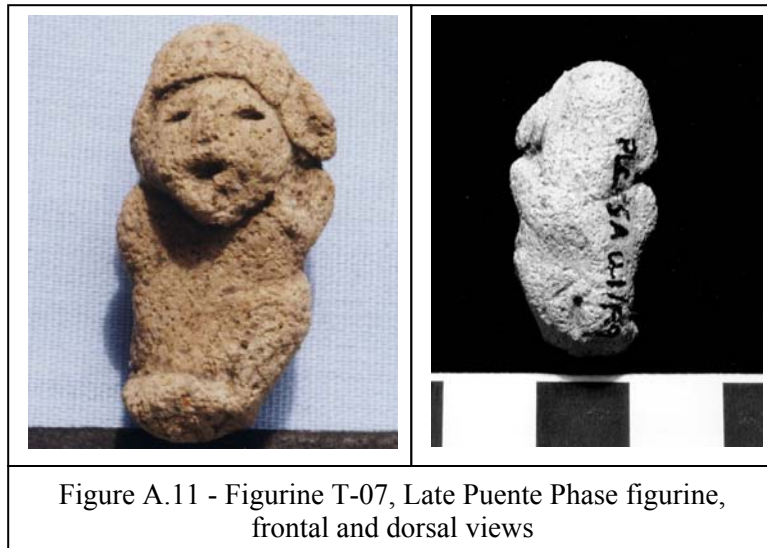


Figure A.10 - Figurine H-15, Late Puente Phase  
figurine head

Figurine H-15 is the only head found in Unit 3. It was found in dark gray clay of Level 11. It is solid with reburned firing and has a fine sand temper. The color is brown in the face with a mottled pinkish gray and light brown at the top of the head (7.5YR 6/2 and 6/4). Vertical striations present on the top of the head may indicate hair. A band goes across the top of the forehead but is broken off on the left side. A possible bun or large earpool is present on the right side. These characteristics most likely indicate that this is a female head. The back of the head is flat. Figurine T-07 (see Figure A.11) shares this characteristic with H-15, as well as having similar facial details. The left side of H-15 may have had a bun or earpool that broke off. The face is round with a small chin. The nose is triangular in shape and is slightly raised. The mouth is open with a deep incision, and the eyes are horizontally slit. The open mouth may indicate that the person depicted is singing or speaking. This figurine was found with an ocarina in the shape of a bird (A-05, see Figure A.15), and turtle shell refuse, some of which might have been used as drums.

## Late Puente Torsos

T-07  
U1-N/F9  
FS #: 452  
Unit 1-North  
Feature 9  
3.1 cm (L)  
1.3-1.6 cm (W)  
0.8-1.3 cm (T)  
5YR 8/3, pink  
Late Puente Phase



Figurine T-07 is unique in that it is the only complete figurine in the San Andrés collection. It is one of the smallest figurines in the collection as well. Because of its small size, the details are minimally indicated on its head and torso. It appears infant-like with stubby arms and seated with the right leg folded in front, or it may be a dwarf. The back of the torso has a vertical slit to indicate the cleft of the buttocks. A round clump, possibly a bun or ear spool similar to that on H-15 (see Figure A.10), is present on the left side of the head. The face is outlined with an inverted U shape, which may be indicative of hair. The face is round with punctations for the eyes and mouth. A subtle bump is present for the nose. Its facial features and bun or earpool detail are similar to those of Figurine H-15 (Figure A.10), whose hairstyle is probably female. Other than the head characteristics, the gender is indeterminable. It is solid, of a fine sand temper and may not be completely fired. Small figurines like T-07 are present at Chiapa de Corzo and known as the I-Chiapa-A8 variety (Lee 1969:17). Like figurine T-07, these figurines have "round fillets of clay " on the side of the head that may be earplugs.

T-09 and T-10

U5/F4-6

FS #: 108

Unit 5, 100-120 cmbd

Feature 4-6

Late Puente Phase

T-09: 6.2 cm (L), 0.9-3.1 cm (W),  
1.7-3.1 cm (T)  
7.5YR 7/4, pink

T-10: 6.7 cm (L), 1.9-3.4 cm (W),  
2.0-3.1 cm (T)  
7.5YR 7/4, pink



Figure A.12 - Figurine fragments T-09 and T-10 respectively, Late Puente Phase figurine torso

Figurine fragments T-09 and T-10 make up an upper torso. Both halves have subtle breasts with punctated nipples. Although the waist does not appear constricted, the figurine is most likely female due to the presence of breasts. The torso has a medium sand temper and is incompletely fired. The surface is cracked throughout and crumbles easily. The back of the torso contains a light brown color (7.5YR 6.5/2, pinkish gray) differing from the color of the rest of the torso.

## Late Puente Limbs

Twenty-seven limb fragments were found in the Late Puente levels. With the exception of three fragments not analyzed (L-168 to L-170), the Late Puente limb fragments consist of the following: 8 leg fragments (L-26, L-32, L-50, L-55, L-61, L-65, L-134, L-154), 7 arm fragments (L-46, L-51, L-52, L-59, L-60, L-64, L-155), 2 hand fragments (L-58 and L-63), and 7 undetermined fragments (L-27, L-45, L-47, L-48, L-56, L-57, L-62). A fingerprint was present close to the top edge of leg fragment L-134. Warren Barbour's analysis of the fingerprint indicates that it most likely belonged to a female (personal communication, 2000).

The twenty-four analyzed limb fragments are solid. An example of a Late Puente limb fragment is pictured in Figure A.13 below. Most of the limbs are incompletely fired with the exception of two undetermined limb fragments that appear to be completely fired and one undetermined fragment that is not fired. The majority of the limbs have a fine sand temper. The colors of the Late Puente limbs range from pinkish white and light gray to pink, light brown, and reddish yellow. The sizes of the limbs are relatively small (1.4-5.1 cm in length, 0.4-3.1 cm in thickness).

L-60  
U3/9  
FS #: 829  
Unit 3, Level 9, 100-110 cmbd  
4.1 cm (L), 1.7 cm (W), 1.7 cm (T)  
5YR 7/4, pink  
Late Puente Phase



## Late Puente Animal Figures

A-04

U1-N/F9

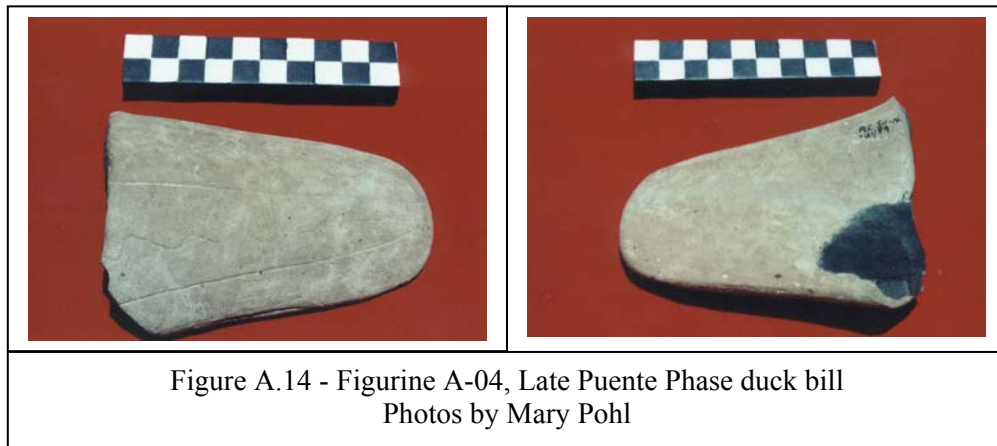
FS #: 450

Unit 1-North

Feature 9

Late Puente Phase

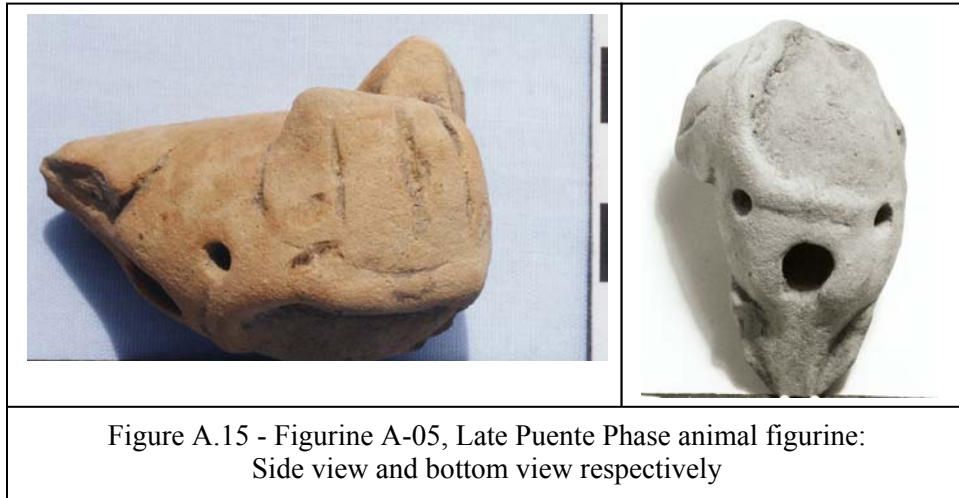
(dimensions and color not analyzed)



Two animal figurines are from the Late Puente levels. Both of the figurines appear to be of birds. Figurine A-04 is possibly a duck beak with a solid composition. A straight incision is present along the center of the beak and close to the sides, with a wavy incision on either side of the central incision. The beak is broken along the thickest edge and underside of the fragment.



A-05  
U3/11  
FS #: 838  
Unit 3, Level 11, 120-130 cmbd  
5.6 cm (L), 1.8-3.7 cm (W), 0.3-3.5 cm (T)  
5YR 6/8 with 7.5YR 7/6, reddish yellow  
Late Puente Phase



The other Late Puente animal figurine, A-05, is an ocarina or whistle in the shape of a bird. The head is absent. The hollow bird body sits with a folded right wing and a missing left wing. The wing and neck area has three striations each. A relatively large hole is present in the back end of the bird body accompanied by two smaller holes on either side of the central hole. The tail end has two incisions present. The ocarina is made with a fine volcanic ash temper. It was found in association with a figurine head (H-15) and with turtle shell that may have been used as drums.

### **Mixed Levels of Early & Late Puente/Early Franco Phases**

Unit 1 contained mixed materials at 140-160 centimeters deep. The materials were of Early and Late Puente Phases mixed with Early Franco Phase materials. Seven figurine fragments were found in this level, consisting of 1 torso, 5 limb fragments, and 1 animal figurine. All of the figurines are solid in composition.

#### **Mixed Early & Late Puente/Early Franco Torso**

T-06

U1/11

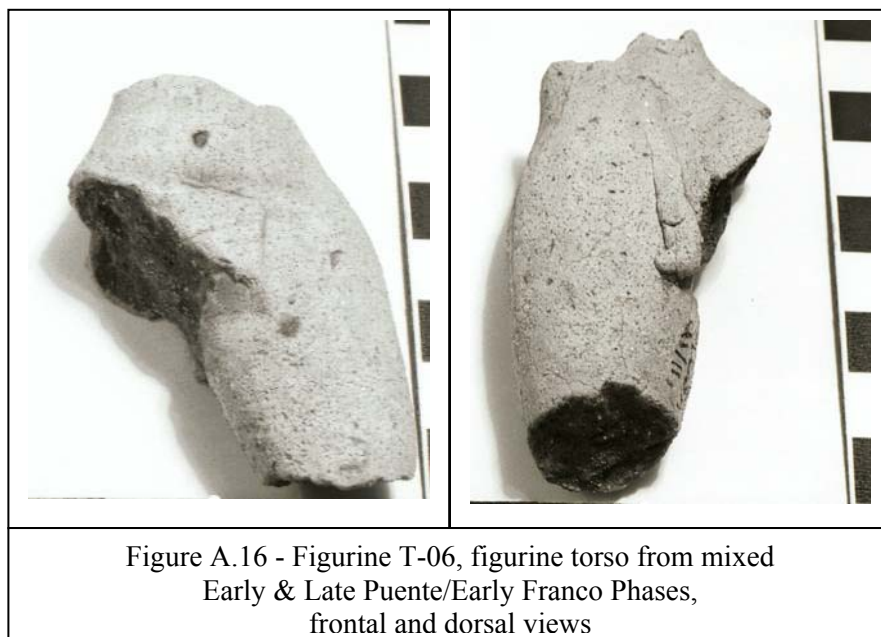
FS #: 295

Unit 1, Level 11, 140-160 cmbd

6.3 cm (L), 2.2-3.5 cm (W), 2.2 cm (T)

5YR 7/3.5, pink

Mixed Early & Late Puente/Early Franco Phases



Figurine T-06 is a solid, lower torso fragment with the abdomen, left hip and upper thigh present. It has a fine sand temper. The fragment appears to be female due to the constricted waist, the flaring of the left hip, and the subtle horizontal line below the navel, which may be indicative of a low-slung garment. Another indicator of female gender is present in the back of this torso, where a tie or string hangs down. This is indicative of an apron or pubic covering, which are garments worn by females.

### Mixed Early & Late Puente/Early Franco Limbs

Five limb fragments were found in the mixed Early and Late Puente and Early Franco levels of Unit 1 (Level 11). An example is Figure A.17 below. All of the limbs appear relatively light in color: three are pink (L-038, L-039, L-041), and two are pinkish white (L-037 and L-040). One fragment (L-040) has spots of a reddish yellow color (5YR 7/6). All five limbs are solid, made of a fine sand temper and are incompletely fired. Three appear to be leg fragments. The other two limb fragments are undetermined. Lengths range from 1.8 cm to 4.6 cm. The thickness of the limbs range from 0.9 cm to 2.5 cm.

L-037  
U1/11  
FS #: 295  
Unit 1, Level 11, 140-160 cmbd  
4.6 cm (L), 0.9-2.5 cm (W), 1.3-2.5 cm (T)  
5YR 8/2, pinkish white  
Mixed Early & Late Puente/  
Early Franco Phases



Figure A.17 - Figurine L-037,  
figurine limb from mixed  
Early & Late Puente/  
Early Franco Phases

## Mixed Early & Late Puente/Early Franco Animal Figure

A-03

U1/11

FS #: 295

Unit 1, Level 11, 140-160 cmbd

2.6 cm (L), 2.1 cm (W), 1.2-2.5 cm (T)

5YR 8/2, pinkish white

Mixed Early & Late Puente/

Early Franco Phases



Figure A.18 - Figurine A-03, animal figurine from mixed Early & Late Puente/Early Franco Phases

One animal figurine, A-03, is from Level 11 of Unit 1. It appears bird-like and may represent the Ferruginous pygmy owl, which inhabits river woodlands, forest edges, and second growth (Peterson and Chalif 1973, Beletsky 1999). It is active during the day and may be seen around the entrances to caves (Pohl - personal communication, 2003). A beak may have once been present but has broken off. The top of the head is broken and is darker in color than the rest of the head. The eyes are simple slits encircled with a round incision. A fingerprint is present between the right eye and the base of the broken beak. According to Warren Barbour, the fingerprint is most likely that of a female (personal communication, 2000). The bird head is solid, incompletely fired, and made with a fine sand temper.

### Mixed Levels of Late Puente/Early Franco Phases

Two figurines are from levels with mixed materials of Late Puente and Early Franco Phases. More specifically, 1 head (H-05) and 1 limb fragment (L-166) emerged from Unit 1-Feature 1 and Unit 1-Feature 3.

#### Mixed Late Puente/Early Franco Heads

H-05

U1/F1-1b-2

FS #: 142

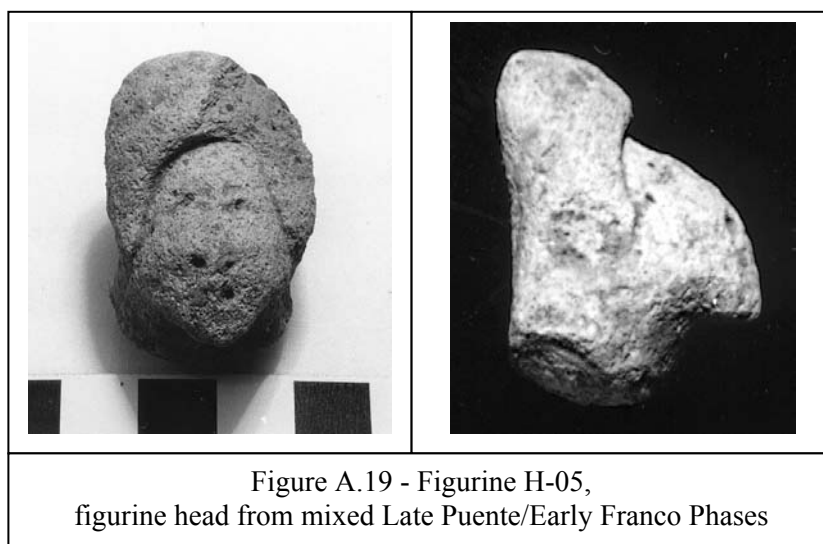
Unit 1, Level 2, 85-95 cmbd

Feature 1-1b-2

4.0 cm (L), 2.2 cm (W), 1.2-2.6 cm (T)

5YR 7/6, reddish yellow

Mixed Late Puente/Early Franco Phases



Figurine H-05 wears a tall turban, the base of which is clearly defined around the forehead area in an inverted U shape, which may indicate that this is a female head. The face is long and oval in shape with a pointed chin. This particular head is the only one in the collection with the nose and mouth area indicated by punctations. It resembles heads in Weiant's (1943: Plate 4 and 8) ceramic analysis of Tres Zapotes. The eyes are lightly slit with punctations, and the eyebrows are incised. The left side is broken off revealing a darker red core, which may indicate that it was reburned.

### **Early Franco Phase (700-550/500 BC)**

The figurines of the Early Franco Phase comprise the largest group in the San Andrés collection. Fifty-eight percent of the total number of figurines, or 178 fragments (including fragments from Unit 7-8 feasting refuse and sump pump salvage), emerged from the levels with Early Franco Phase materials. The figurines include: 25 heads, 33 torsos, 98 limb fragments, 4 animals, and 18 unidentifiable fragments (U-16, U-17, U-19 to U-28, U-30, U-34 to U-38).

Objects from the Unit 7-8 feasting refuse refer to a slump in the walls of these units. The objects recovered are Early Franco Phase. The 24 figurine fragments from the feasting refuse make up about 8 percent of the total figurine collection and include: 4 heads, 8 torsos, and 12 limb fragments.

Of the 178 Early Franco fragments, eight figurines (3 percent of the total collection) came out of the pump sump salvage. They include: 2 heads, 1 torso, and 5 limb fragments. One head and one limb fragment is hollow and the remainder of the figurines are solid.

## Early Franco Heads

Figurine H-16

U7/5

FS #: 173

Unit 7, Level 5, 80-100 cmbd

4.0 cm (L), 2.8 cm (W), 2.9 cm (T)

10YR 6/1 and 6/2, gray and

light brownish gray

Early Franco Phase

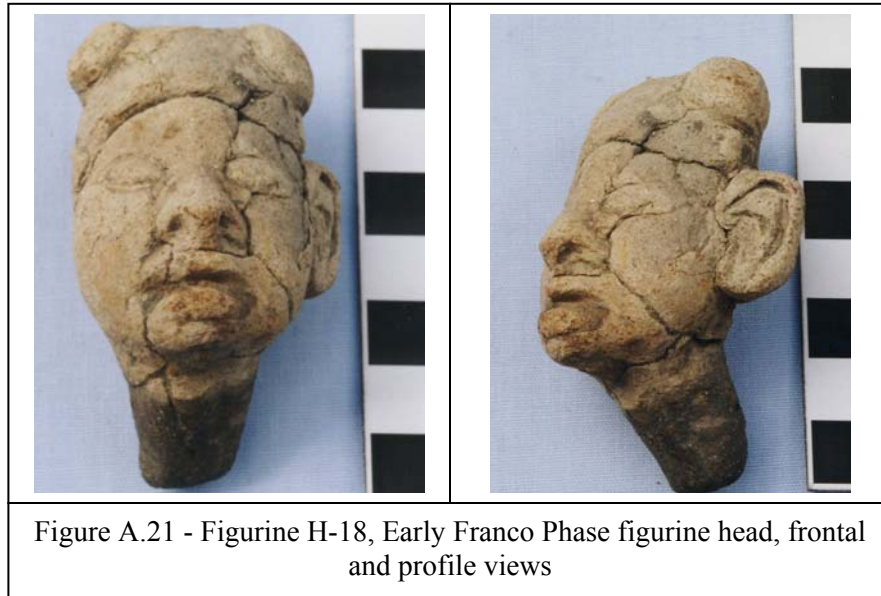


Figure A.20 - Figurine H-16,  
Early Franco Phase  
figurine head

Figurine H-16 has possible hair or a close-fitting cap, with the left side broken off. The hairline may be indicated with an inverted U shape but the detail is faint. The hairline may indicate this head is female but the face shape is round with a square jaw, which gives it a male characteristic. The chin sticks out, and the nose has a triangular shape. The mouth is indicated by a faint slit with a square shape and thick lips. The eyes are horizontally slit, the left one at an angle. It is solid and tempered with medium-fine sand, and is incompletely fired.

Figurine H-17 (not pictured) appears to be the top part of a head, possibly with hair that is indicated by vertical striations. It was found in Unit 7, Level 5 (PLCSAU7/5, FS# 173) at 80-100 cm. It is solid, incompletely fired, and has a fine sand temper. The front of the head fragment has a dark gray color (10YR 4/1, dark gray), and the back has a light brown color (10YR 7/3, very pale brown). It is 1.9 cm tall, 2.5 cm wide, and 0.9-1.4 cm thick.

H-18  
U7/6  
FS #: 205  
Unit 7, Level 6  
Gray midden  
6.5 cm (L), 3.0-3.5 cm (W), 2.5 cm (T)  
10YR 7/2.5, very pale brown (light gray)  
Early Franco Phase



Figurine H-18 is very distinct because of its long neck stem, large ear, and two nodules on either side of the head. The long neck stem or tenoned neck is like figurine H-36 and may have fit into a torso. The two lumps are similar to those found in figurines from the Mazatan region (Blake et al. 1995:170, Clark, 1991:21) during the Ocos phase (1250-1100 B.C.) and Cherla phase (1100-1000 B.C.). Clark states that the round shapes may represent mirrors that were parts of helmets or headdresses (p.20-21). Evidence of high status use of mirrors has been found in burials at El Vivero and Paso de la Amada in the Mazatan area, where a forehead mirror was present on the head. On the other hand, the two knobs may be buns, which are female characteristics found on Olmec images, such as a seated ceramic female figurine from La Venta (see Follensbee 2000:Figure 41). The head appears to be outlined on the top, which may indicate a hairline, or it may be wearing a hat instead. The shape of the face is oval. The left ear is realistically detailed with a cartilaginous interior. The nose is triangular and wide with punctuated nostrils. The mouth is open with a thick lower lip. The eyes are incised in an oval shape with no pupils or eyeballs indicated. Figurine H-18 is solid, incompletely fired, and tempered with fine sand.



H-19  
U7/F1B-6  
FS #: 241  
Unit 7  
Feature 1B-6  
Gray midden  
5.1 cm (L), 3.2 cm (W), 1.8-3.8 cm (T)  
7.5YR 8/2, pinkish white  
Early Franco Phase

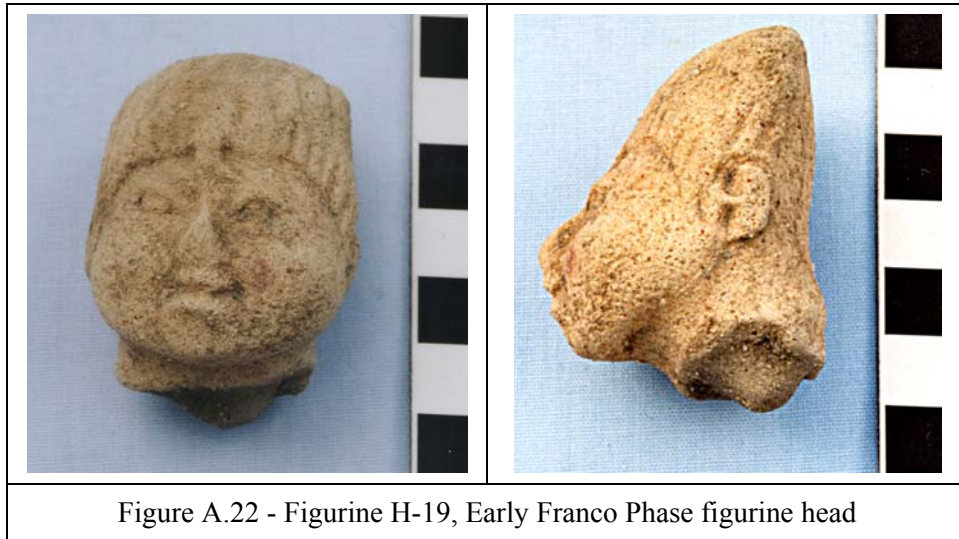


Figure A.22 - Figurine H-19, Early Franco Phase figurine head

Figurine H-19 is from the gray midden area of Feature 1B in Unit 7. It is solid with a fine sand temper and is incompletely fired. It may have been reburned. The head has either a tall turban or hair with vertical incisions, and may show head deformation. It has a round inverted U shape outlining the face, which may indicate that this is a female head. A small raised area sits below the hairline, in the middle of the forehead, which may be an ornament. The face shape is round with full cheeks and a small chin. The left ear is present, the nose is triangular with a thin bridge, and the mouth is incised in an upturned direction. The eyes are incised into an oval shape with no pupils indicated. A ridge is present above the upper eye area, and a slight brow ridge is present.

Figurine H-20 (not pictured) is from Unit 7, Feature 1b-6 (PLCSAU7/F1b-6, FS# 241). It was found with figurine H-19 in the gray midden area at 100-120 cmbd. Unfortunately, its face is eroded but the head retains its shape. The right side has what may have been an ear or earspool or a bun. The head is solid with a medium-fine sand temper, and is incompletely fired. Its color in the front is mottled light gray with brown (5YR 7/1 with 7.5YR 5/4), and is gray in the back (5YR 5/1) with spots of red (10R 4/8). Its length is 3.7 cm, with a width of 3.2 cm and a thickness of 2.0 cm.

H-21  
U7/7  
FS #: 258  
Unit 7, Level 7, 120-140 cmbd  
BGS clay  
2.3 cm (L), 1.7 cm (W), 1.7 cm (T)  
5YR 8/1, white  
Early Franco Phase



Figure A.23 - Figurine H-21, Early Franco Phase figurine head

Figurine H-21 (above) is smaller than most of the heads described thus far. It is incompletely fired with a fine sand temper and is solid. The head has a ridge or crest along the top of it, and has a round, inverted U shape framing its face, which are characteristics indicating a female head. The shape of the face is oval with a pointed chin. Ears or round circular earpools are present on both sides. The nose has a triangular shape, and a faint trace of a mouth is indicated by a slit. The eyes are horizontally slit.

Figurine H-22 (not pictured) was found with another head (Figurine H-23) in Unit 7, Level 9 at 150-170 cm (PLCSAU7/9, FS# 319). Figurine H-22 is small compared to most of the other figurine heads. It is 2.5 cm in length, 1.4-1.7 cm in width, and 0.6-1.6 cm in thickness. It is solid with a fine sand temper, and is almost completely fired with a light gray core. It has a light gray color overall (5YR 7.5/2). The head wears a tall, simple hat, slightly broken on the right side, and has a round inverted U shape framing the face, which may indicate that this is a female head. The face is round with the chin sticking out. The mouth is slit in a downturned position and no ears are present. The eyes are slit in a diagonal position.

H-23  
U7/9  
FS #: 319  
Unit 7, Level 9, 150-170 cmbd  
BGS clay  
5.5 cm (L), 2.5-3.1 cm (W), 1.0-2.8 cm (T)  
7.5YR 7/2, pinkish gray  
Early Franco Phase

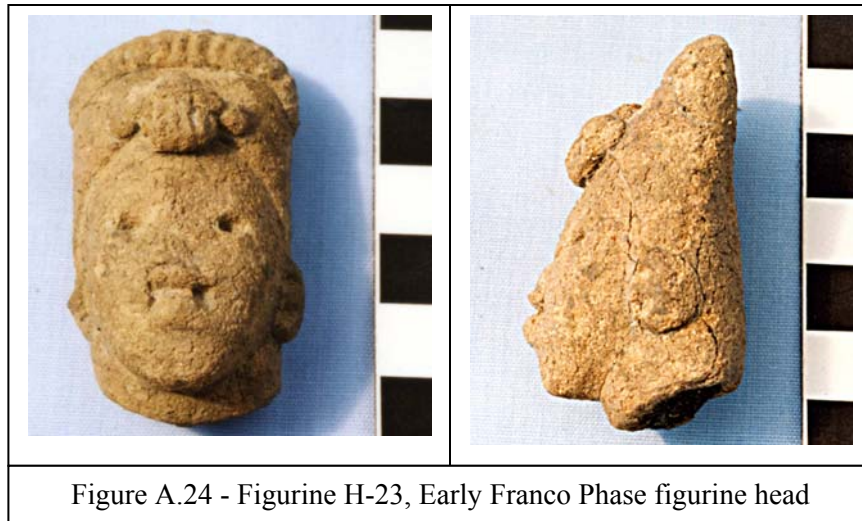
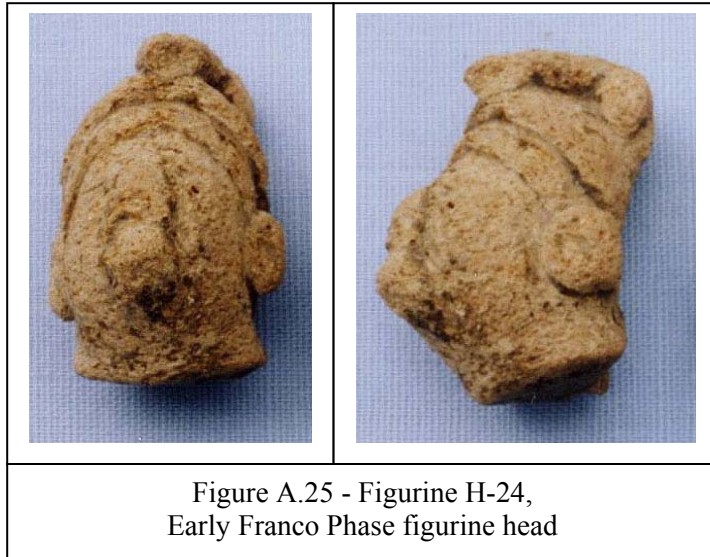


Figure A.24 - Figurine H-23, Early Franco Phase figurine head

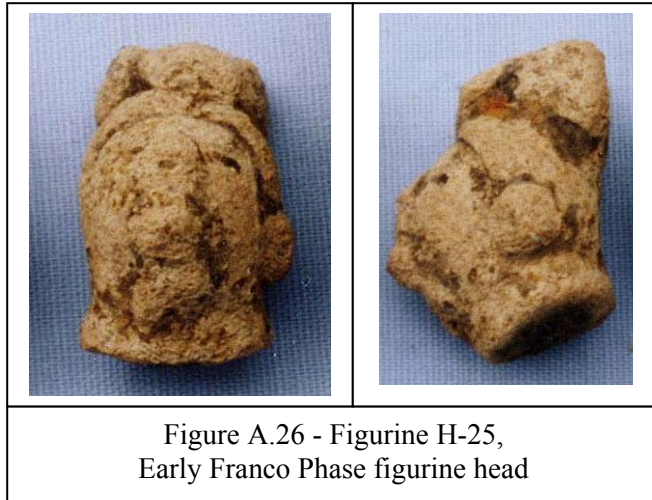
Figurine H-23 is similar to one from La Venta (Drucker 1952: Plate 37-c). It is also similar to Figurine H-12 (see Figure A.8) in that it also has a shell on the forehead area but with five round beads applied over it. The headdress is tall with a serrated band or ridge at the top. An inverted U shape frames the face. Together, these characteristics indicate that H-12 may be female. The face is oval, and the chin sticks out. Both ears are present with the right one broken. The right nostril of the nose is present, the mouth is open with vertical incisions on the sides and the lips are rectangular in shape. The eyes are the only ones of the Early Franco Phase that are indicated by simple punctations. The color is a mottled pinkish gray with some pinkish white (7.5YR 8/2). It is solid and incompletely fired with a fine sand temper.

H-24  
U8/5  
FS #: 337  
Unit 8, Level 5, 80-100 cmbd  
Brown midden  
2.8 cm (L), 1.0-1.8 cm (W),  
1.2-1.9 cm (T)  
7.5YR 8/2, pinkish white  
Early Franco Phase



Three heads (Figurines H-24, H-25, and H-26) were found together in Unit 8, Level 5 at 80-100 cm. Figurine H-24 is solid with a medium-fine sand temper and incomplete firing. It wears a headdress with a crest over the top. It appears to have facial hair above the lips and on the chin. The head displays what are more likely earspools than ears because of the circular shape. The head garment, facial hair, and earspools are characteristics that indicate this is a male head. The face is round and the chin sticks out. The nose is wide and no nostrils are indicated. The mouth is slit in a downturned position, and the eyes are slit horizontally. Figurines T-17, T-18, L-115 to L-120, and U-22 were found associated with heads H-24 to H-26.

H-25  
U8/5  
FS #: 337  
Unit 8, Level 5, 80-100 cmbd  
Brown midden  
2.6 cm (L), 1.2-1.5 cm (W),  
1.1-1.8 cm (T)  
7.5YR 8/2, pinkish white  
Early Franco Phase



Figurine H-25 is very similar to Figurine H-24 because of the similar size and style of the head, indicating that both heads were most likely made by the same maker. It is of a solid composition with a medium-fine sand temper and is incompletely fired. Like Figurine H-24, it also wears a headdress with a crest on top. Figurine H-25, however, has 2 circular knobs or ornaments on either side of the top of the head. Like H-24, it appears to have facial hair above the lips and on the chin, or it may indicate an extra fold of skin under the chin. The left ear or earpool is present, which is circular in shape. The similar characteristics that H-25 shares with H-24 may indicate that this head is also male. Its face is round with the chin sticking out. The nose is small and wide, and the mouth is incised in a downward position. The eyes are horizontally slit. Figurines T-17, T-18, L-115 to L-120, and U-22 were found associated with heads H-24 to H-26.

H-26  
U8/5  
FS #: 337  
Unit 8, Level 5, 80-100 cmbd  
Brown midden  
4.3 cm (L), 2.4-2.8 cm (W), 0.7-2.7 cm (T)  
10YR 8/2.5, very pale brown  
Early Franco Phase

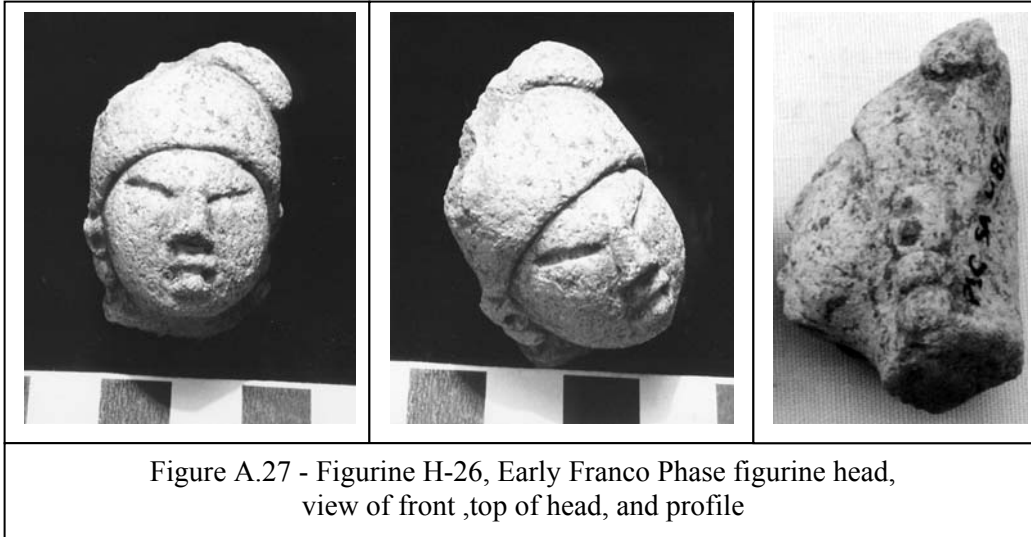
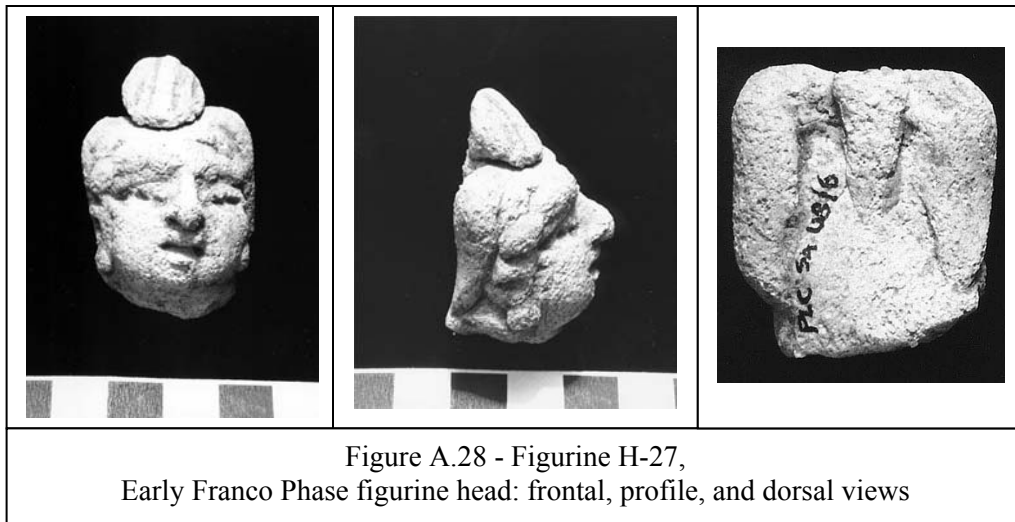


Figure A.27 - Figurine H-26, Early Franco Phase figurine head,  
view of front ,top of head, and profile

Figurine H-26 is the largest of the three heads of FS# 337. It is solid and incompletely fired with a fine sand temper. It wears a hat or turban with a band or crest (similar to Figurine H-21 or Figurine H-23) over the top, although the right side is broken. The face is clearly outlined with a round inverted U shape. The ears have two punctations and two beads dangling from each lobe. The head decoration and ear ornamentation indicate that H-26 is a possible female. The face is oval with full cheeks and the chin protrudes out. The nose has a triangular shape, and the mouth is downturned with two small vertical incisions on either side (similar to Figurine H-23 in Fig.A.24), a characteristic trait in Olmec imagery. The eyes are deep, long slits. Figurine H-26 resembles two particular heads from La Venta (Drucker 1952: Plates 28-b and 37-d). Figurines T-17, T-18, L-115 to L-120, and U-22 were found associated with heads H-24 to H-26.

H-27  
U8/6  
FS #: 347  
Unit 8, Level 6, 100-120 cmbd  
Brown midden  
3.5 cm (L), 2.5-3.2 cm (W),  
1.9-2.9 cm (T)  
10YR 8/2, white  
Early Franco Phase



A round fragment (1.5 cm tall), previously broken off, refits on the top of Figurine H-27. The broken fragment has vertical striations and resembles a shell, jewel or mirror similar to those found on heads Figurines H-12 and H-23 (Figures A.8 and A.24, respectively). Figurine H-27 resembles a head from Chiapa de Corzo (Lee 1969: Fig.2-q, p.14) that dates to the Dili phase (900-600 B.C.). The face of H-27 is round with full cheeks. The mouth is open with a deep slit and a small lower lip slightly protruding. The nose is large and protruding with punctated nostrils, and the bridge extends up to the forehead. The head wears a turban with three ponytails or tassels in the back. A band of circular beads goes across the forehead. The ears of Figurine H-27 have two punctations with a round bead on each lobe. The hairstyle, head decoration, and ear ornaments indicate this is a female head. The eyes are different from the other heads by having deep slits and punctations within the slits to indicate the pupils. The eyeballs are outlined as well, within the slits. Ridges above the eyes are present that blend into the forehead. The color is a very light orange-brown with spots of a reddish yellow color (7.5YR 6/6). Like most of the heads described thus far, it is solid and incompletely fired with fine sand temper.



H-28, H-29, H-30

U8/6

FS #: 347

Unit 8, Level 6, 100-120 cmbd

Early Franco Phase

H-28: 3.7 cm (L), 2.2-3.7 cm (W), 0.6-0.9 cm (T)

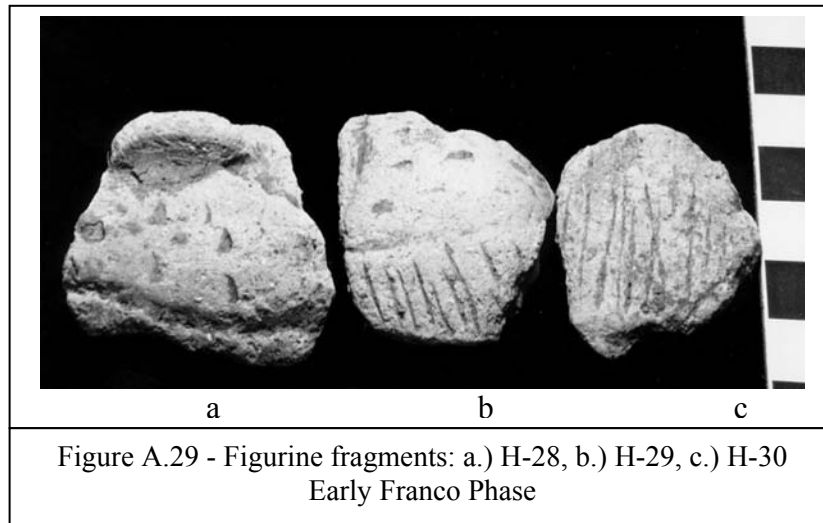
10YR 7/3, very pale brown

H-29: 4.2 cm (L), 1.2-3.2 cm (W), 0.8-1.1 cm (T)

10YR 8/1, white

H-30: 3.8 cm (L), 2.1-3.0 cm (W), 0.5-0.8 cm (T)

10YR 7/2, light gray

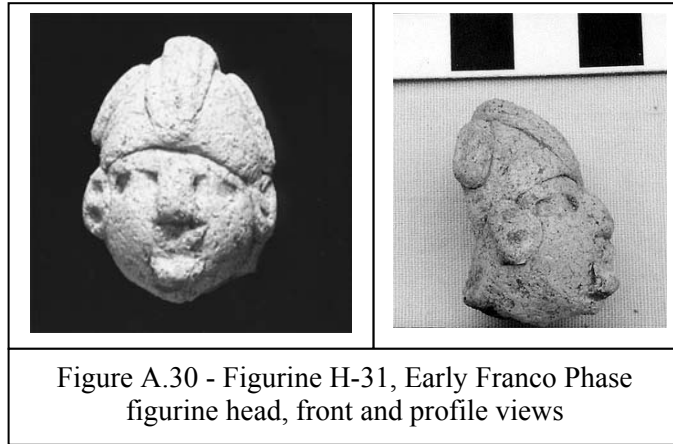


Figurines H-28, H-29, and H-30 are fragments of what may have been a large hollow head. Although all three fragments did not refit with each other, they may have been part of the same figurine. The part of the figurine head that they may have been a part of is difficult to determine due to the shapes of the fragments. Figurine H-28 (Figure A.29a) has small, scallop-shaped incisions on one side of the fragment. It also has a groove on one end of the fragment, and a protruding piece on the other end. It is incompletely fired and has a medium sand temper. Some areas of the fragment have red spots (2.5YR 4/6, red).

Figurine H-29 (Figure A.29b) also has a few scallop-shaped incisions on one side of the fragment similar to Figurine H-28, as well as striations. It has a medium sand temper and is incompletely fired. One edge of the fragment has the same red color as Figurine H-28 (2.5YR 4/6, red). Figurine H-30 (Figure A.29c) has striations on one side of the fragment. Like the previous two fragments, it is incompletely fired and has a medium sand temper. Rather than having red spots, the fragment has orange-brown spots on it (7.5YR 5/8, strong brown).

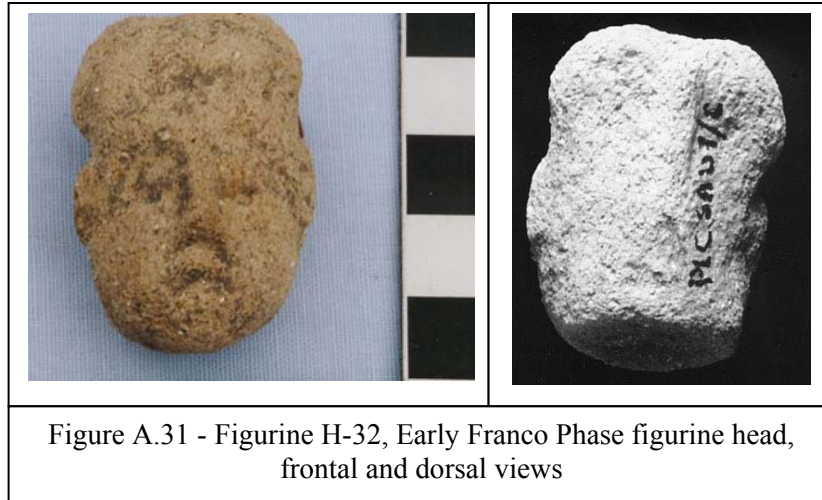


H-31  
U8/8  
FS #: 418  
Unit 8, Level 8, 140-160 cmbd  
BGS clay  
3.3 cm (L), 2.5 cm (W),  
1.0-2.4 cm (T)  
Early Franco Phase



Figurine H-31 is solid and incompletely fired with a fine sand temper. This unique head has three tassels or strips on top of the head (down each side of the head and down the center) with striations on them. These striated tassels may represent buns or ponytails, similar to heads H-27 (Figure A.28), H-32 (Figure A.31), and H-33 (Figure A.32). Because of this detail, H-31 may be female. Other female gendered characteristics are not present, however, such as the inverted U-shape of the hairline, or elaborate ear ornaments. The mouth might be indicated by a large, protruding bottom lip (the top may have broken off). The position of this protruding part appears low on the face, however. It may represent facial hair on the chin instead, giving this head a male characteristic. Because of the mixed gender characteristics, the gender is indeterminable. The face is oval with full cheeks and the nose is rectangular. The eyes and ears have a unique style for they appear to have been punctated with a small, square tool. Each of the eyes and ears have two square punctations. A globular piece, possibly indicating an ear ornament, sits closely below the left ear.

H-32  
U7 feasting refuse  
FS #: 816  
Unit 7  
BGS clay  
4.1 cm (L), 2.3-2.7 cm (W), 1.2-2.4 cm (T)  
7.5YR 8/2, pinkish white  
Early Franco Phase



Figurine H-32 was found in the deeper levels of the Unit 7 feasting refuse. It is solid with a fine sand temper and is incompletely fired. The features on the head are more eroded than the other heads in the collection. The head has a faint crest across the top and a light inverted U shape frames the face, which may mean this is hair. A faint tassel or ponytail hangs down the back of the head. These characteristics may signify that this is a female head. The face is oval with full cheeks, and the chin sticks out. The ears each have two punctations but no ornamentation. The nose is long, with the bridge extending to the forehead, and has a triangular shape. The mouth is incised and downturned. The eyes are each indicated with two horizontal incisions, almost forming an oval shape, with two punctations to indicate the pupils. Faint ridges above the eyes are present. The head was found with figurine torso T-34.

H-33

Pump sump

FS #: 824

4.9 cm (L), 1.3-3.5 cm (W), 1.0-3.0 cm (T)

10YR 7/2, light gray

Early Franco Phase

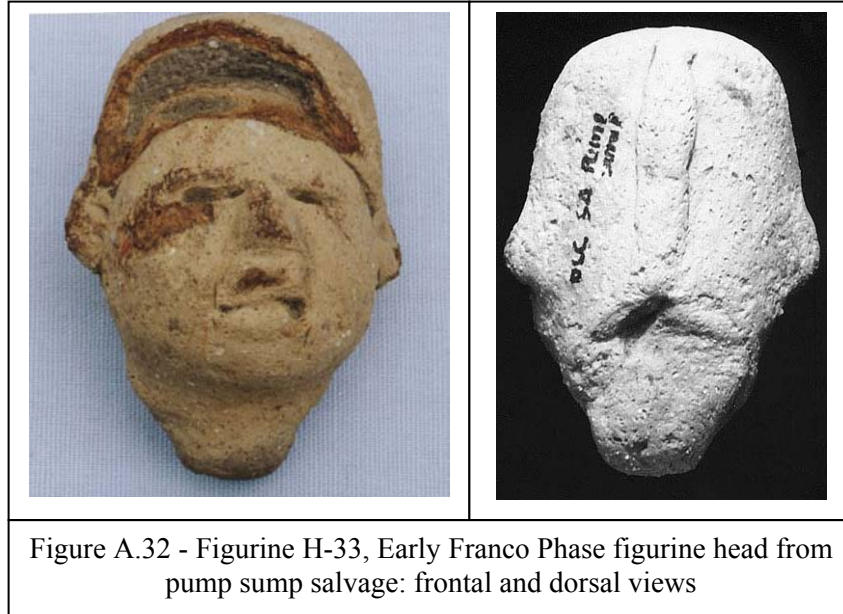


Figure A.32 - Figurine H-33, Early Franco Phase figurine head from pump sump salvage: frontal and dorsal views

Figurine H-33 is solid and incompletely fired with a medium sand temper. It is similar to Figurine H-32 (Figure A.31) because of the ponytail or tassel that hangs down the back of the head. Figurine H-27 (Figure A.28) also shares this same detail but with three ponytails instead of one. Figurine H-33 wears a tall head garment, but the right and central portion is broken off. The face is outlined with a round inverted U shape. The hair treatment is the only female gendered characteristic present. The face is round, the cheeks are full, and the chin protrudes. A small neck stem is also attached to the base of the head. The ears each have two punctations, with no ear ornaments apparent. The nose is wide and triangular, and the mouth is slit and broken at the top. The eyes are deep, horizontal slits.

Figurine H-34 (not pictured) is from Unit 7, Level 4 (PLCSAU7/4, FS# 866) at 60-80 cm, and is from the Early Franco levels. It is a fragment of what appears to be the back of the head. A tassel or ponytail, similar to those found on Figurines H-32 and H-33, runs down the middle of the fragment. It is 1.6 cm tall, 1.9 cm wide, and 0.2-0.4 cm thick. It most likely was part of a solid figurine, and has a light gray color (10YR 7/1). It has a fine sand temper and is completely fired.

H-35

Pump sump

FS #: 996

5.1 cm (L), 3.8-5.7 cm (W), 0.5-0.9 cm (T)

5YR 6/8, reddish yellow

Early Franco Phase



Figure A.33 - Figurine H-35, Early Franco Phase hollow figurine head from pump sump salvage, frontal and dorsal views

Figurine head H-35 is broken below the nose and ears. It is hollow, incompletely fired, and has a fine sand temper. Hair is absent, but two holes are present for firing purposes or for attaching garments: one in the middle of the forehead and one at the back of the head on the top. The head looks similar to the male, loincloth-clad basalt figure from Veracruz (Van Gerstel, personal communication 1998), popularly known as "The Wrestler" (Benson and de la Fuente, 1996:174). For this reason, this head may be male. Follensbee (2000) notes, however, that bald female heads do occur in Olmec imagery. The ears on H-35 are realistically modeled having cartilaginous detail. The nose is somewhat eroded and broken at the end. The eyes are modeled into almond shapes and pupils are absent. Ridges are present above the eyes.

H-36  
U7/9  
FS #: 1006  
Unit 7, Level 9, 150-170 cmbd  
BGS clay  
12.7 cm (L), 9.0 cm (W), 7.6 cm (T)  
10YR 7/1.5, light gray  
Early Franco Phase



Figure A.34 - Figurine H-36,  
Early Franco Phase  
figurine head

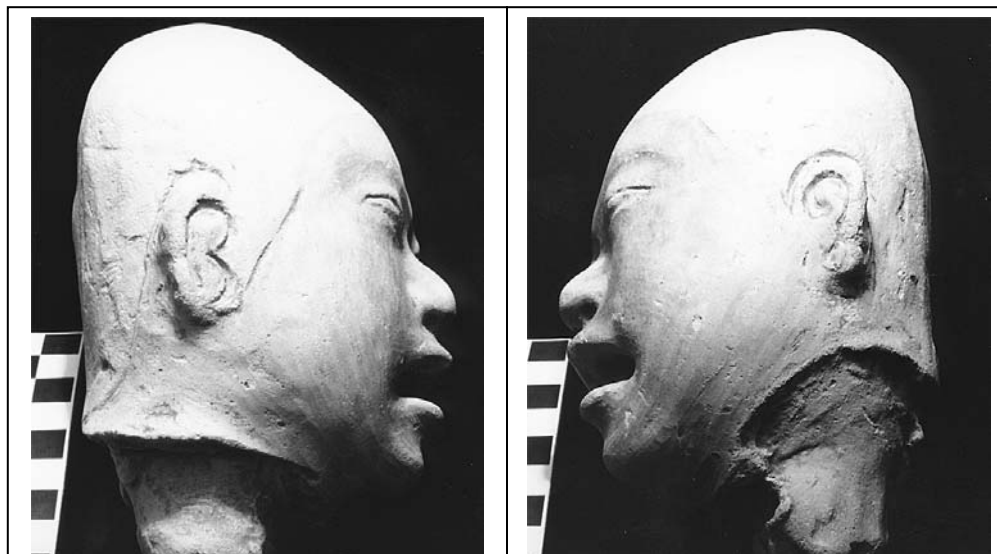


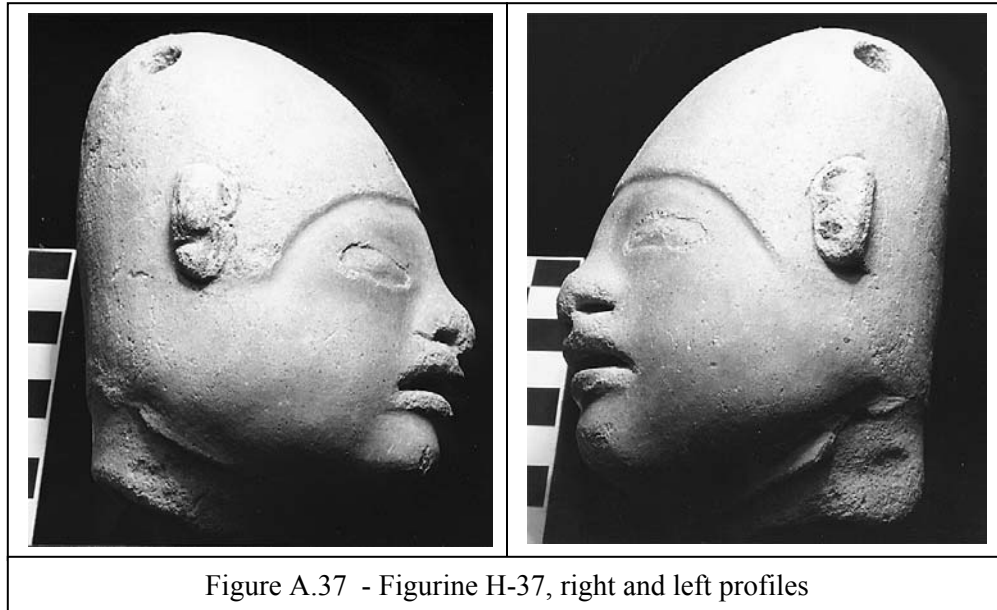
Figure A.35 - Figurine H-36, right and left profiles

Figurine heads H-36 and H-37 are the largest in the San Andrés collection. In general, they are different from other ceramic figurine heads of the Formative period because of their large size and unusual facial characteristics. Because of their larger size, their makers were able to give them facial characteristics that were more life-like than the smaller heads. Both heads are from Unit 7, and both are hollow.

The larger of the two heads, Figurine H-36 (Figures A.34 and A.35 above), is not fired. It was found in Level 9 of Unit 7 at 150-170 cm. This level contained numerous nearly-whole vessels, and the head was surrounded by animal bones. The facial features may be representative of local indigenous features. The head appears to have hair with a part or tonsured groove along the middle. The inverted U shape of the hairline may indicate that this individual is female. The top of the head is lighter in color than the face. A hole is present at the top of the head to facilitate firing or for attaching clothing. If the latter is the case, the possibility that the garment worn may or may not have been a male gendered headdress cannot be dismissed. The shape of the face is somewhat round with a pointed chin. The ears are well defined and have no ornamentation, and the nose is wide with punctated nostrils. The mouth is open with protruding lips, giving the appearance that this individual is speaking or singing. The eyes are incised into crescent shapes with no pupils indicated, and eyebrows are indicated. A small base or crude neck (3.1 cm wide) is attached to the bottom of the head that may have attached to or fit into a body. It probably has a very fine sand temper that has prevented it from cracking during the drying process.

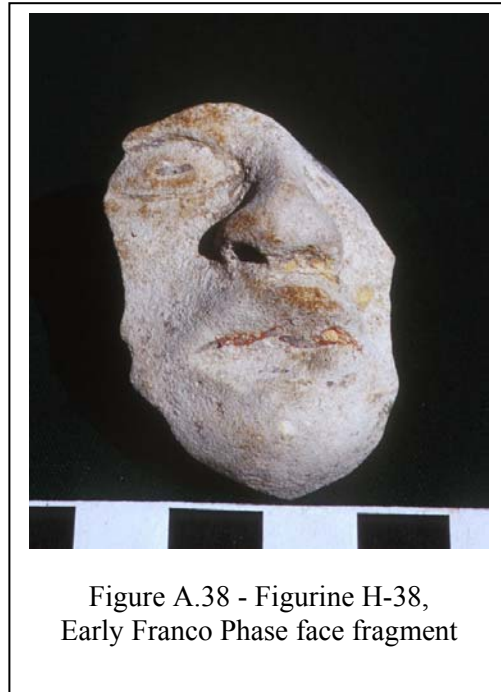
Figurine H-37 (Figures A.36 and A.37 below) is similar to Figurine H-36 in size. It is the second largest head in the collection. An inverted U-shaped hairline or helmet is present that may indicate that this head is female. The back of the head is not developed. The top of the head is somewhat square, and there are three holes present - one in the middle of the forehead and two on the top sides of the head for firing or, possibly for attaching clothing. The shape of the face is round and wide, and the cheeks appear round or full. The ears are clearly defined and each has two shallow indentations within. The nose is raised with deep punctations to indicate the nostrils. The mouth is open, which may indicate this individual is speaking or singing. The lips are roughly defined, and a small indentation is present above the upper lip. The eyes are oblong shapes with no pupils indicated. The asymmetrical characteristic of the eyes may portray an individual with a deformity. A slight brow ridge is present. A small base (4.0 cm wide) is attached to the bottom of the head. Unlike Figurine H-36, this head is completely fired with a fine sand temper. The color is light gray with some areas having a reddish yellow color (5YR 6/6).

H-37  
U7  
Unit 7, BGS Clay  
9.8 cm (L), 7.2 cm (W), 6.0-7.0 cm (T)  
10YR 7/2, light gray  
Early Franco Phase





H-38  
U7-8 feasting refuse  
Units 7-8  
4.3 cm (L), 1.7-3.0 cm (W), 0.2-1.5 cm (T)  
5YR 8/1, white  
Early Franco Phase



Figurine H-38 is a face fragment found in the Unit 7-8 feasting refuse. The right eye is present, which is an incised oval with a horizontal incision in the middle to indicate the pupil. The nose is raised, and the right nostril has a deep punctation. The upper lip is present, but the bottom lip is broken off. The face fragment was part of a hollow head, and the white color is lighter than the other heads in the collection. A brownish-red color is present around the eye and mouth areas. The fragment is incompletely fired and has a fine glassy volcanic ash temper. The gender of this head fragment is indeterminable because the hair or head treatment and ears are not present.



H-39  
U7-8 feasting refuse  
Unit 7-8  
5.3 cm (L), 1.4-3.5 cm (W),  
1.4-3.2 cm (T)  
10YR 7/2, light gray  
Early Franco Phase

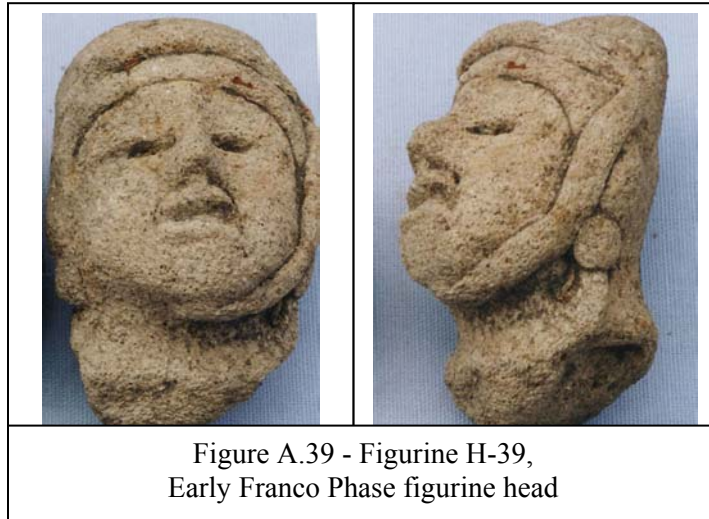
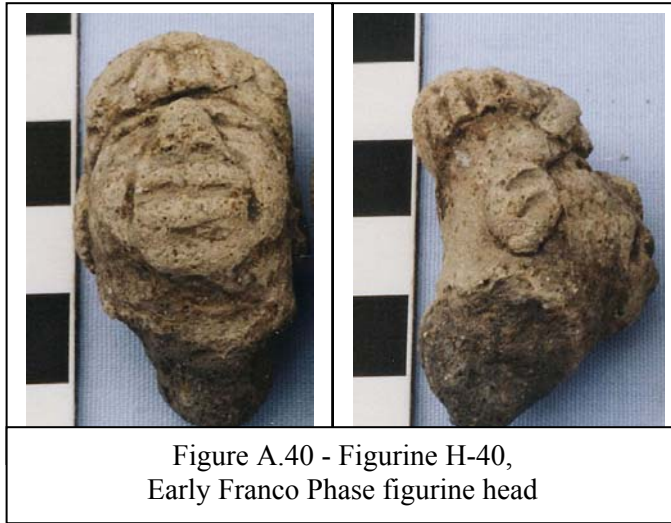


Figure A.39 - Figurine H-39,  
Early Franco Phase figurine head

Figurine H-39 is solid with a medium sand temper and is almost completely fired. The head garment is unique because the head appears to be wrapped in a turban, and a strap on the left side goes around the side of the face and under the chin. The right side may have had a strap at one time. Another strap goes across the forehead, again possibly broken off on the right side. A round ear ornament adorns each side of the head, but no ears are indicated. Apparent pendants below the ears, along with the head decoration, suggest that this figurine is female. The face is oval and the nose is raised with a prominent bridge. The mouth is open with a deep groove, and a line is incised on either side of the mouth, giving the appearance that this head is speaking. The eyes are slit horizontally with deep incisions.

H-40  
U7-8 feasting refuse  
Unit 7-8  
4.2 cm (L), 2.0-2.5 cm (W),  
1.5-2.3 cm (T)  
mostly 7.5YR 8/2, pinkish white  
Early Franco Phase



Figurine H-40 appears to have hair indicated by numerous striations. A band of round beads also lies on the head, close to the forehead area. Because of the hairstyle and head decoration, this head may be female. Each of the ears has two grooves rather than punctations. The face is oval with the chin sticking out. The nose is wide and triangular. The lips are large and the mouth is slit. A vertical line is slit on either side of the mouth, which may indicate the labio-nasal fold of older people. The eyes are also slit. It is also solid, incompletely fired and has a fine sand temper.

## Early Franco Torsos

T-05

U1/10

FS #: 291

Unit 1, Level 10, 125-140 cmbd

5.9 cm (L), 6.0 cm (W), 1.0-2.4 (T)

5YR 7/3.5, pink

Early Franco Phase



Figure A.41 - Figurine T-05,  
Early Franco Phase figurine torso

Figurine T-05 is a top half of a torso with the right shoulder and upper right abdominal portion present. The torso appears female with subtle breasts having an unusual detail of simple horizontal slits to indicate nipples. This torso is the only one in the San Andrés collection with horizontal incisions to portray nipples as opposed to round punctations. A round pendant is present on the chest. The torso is incompletely fired with a medium sand temper.

T-11  
U7/F3-4  
FS #: 183  
Unit 7, 72 cmbd  
Feature 3-4  
4.1 cm (L), 2.4 cm (W), 2.2 cm (T)  
10YR 8/2, white with patches of  
7.5YR 6/6, reddish yellow  
Early Franco Phase

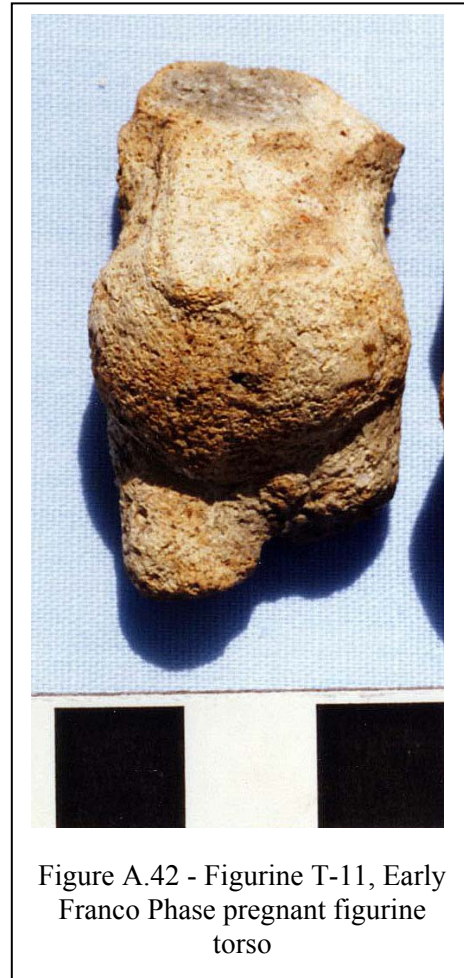


Figure A.42 - Figurine T-11, Early  
Franco Phase pregnant figurine  
torso

Figurine T-11 is a torso of a pregnant female. The arms and legs are absent, with the exception of the upper right thigh. The torso appears to wear some type of garment that covers the chest. A navel is indicated by a small punctation. The fullness of the abdomen suggests that this figure is in the later stages of pregnancy. The torso is solid and is incompletely fired with a fine sand temper. Some red pigment may have been applied to the figurine, especially around the abdomen.

T-12  
U7/F1b-6  
FS #: 241  
Unit 7, 100-120 cmbd  
Feature 1b-6  
4.3 cm (L), 2.9-5.3 cm (W), 2.5-2.8 (T)  
10YR 8/1.5, white  
Early Franco Phase



Figurine T-12 is a mid-portion of a torso, showing only the abdomen and the upper hip area. The constriction of the waist and the curve of the hips indicates that this figurine is most likely female. Another female characteristic is that a string sits low at the hips, indicating a garment (perhaps a loincloth apron) on the figurine. The detail of a knot or tie of the string shows the creator's attention to detail. A deep punctation on the abdomen indicates the navel. The torso is solid, has a very fine sand temper, and is incompletely fired.

T-13  
U7/7  
FS #: 258  
Unit 7, Level 7, 120-140 cmbd  
7.3 cm (L), 4.5-6.8 cm (W), 2.5-3.7 (T)  
10YR 7/2, light gray  
Early Franco Phase

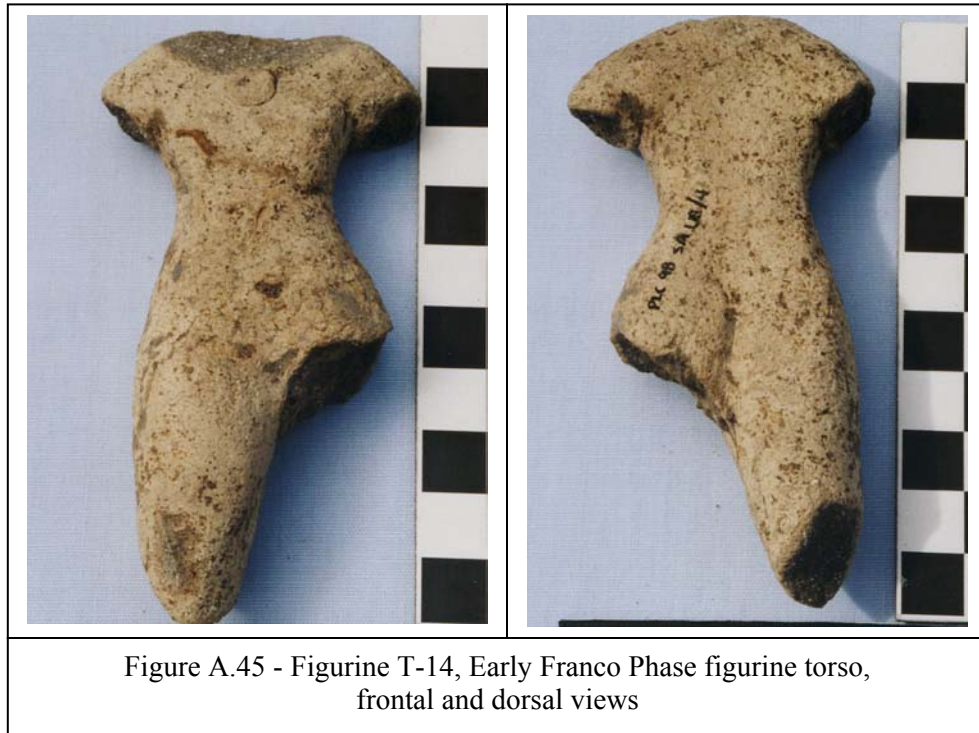


Figure A.44 - Figurine T-13, Early Franco Phase figurine torso

Figurine T-13 is an unusual torso because of its construction. The torso appears to be male because of the absence of breasts as well as having a relatively straight waistline (as opposed to a pinched or constricted waist). The abdomen, however, protrudes outward in a manner resembling pregnancy. A punctation on the right side of the abdomen is unusually placed. Overall, the torso is crudely made compared to the other San Andrés torsos. The right chest area is cracked and the back of the torso, as well as some areas on the front, have spots of brown (7.5YR 5/5, brown). The torso is solid, incompletely fired, and has a fine sand temper. A deep socket is present at the top of the torso, most likely for the insertion of a head.



T-14  
U8/4  
FS #: 298  
Unit 8, Level 4, 60-80 cmbd  
9.9 cm (L), 2.2-5.1 cm (W), 1.6-2.5 cm (T)  
7.5YR 8/2, pinkish white  
Early Franco Phase



Figurine T-14, like T-31 (Figure A.5) and T-40 (Figure A.63) is one of the more complete and classic examples of the San Andrés female figurine. It has minimally pronounced breasts with subtle punctations for nipples, a pinched waist, flaring hips and thigh, and a vertical cleft in the back to accent the buttocks. The one female characteristic that is absent is the pubic "Y" or triangle. Nevertheless, this torso is a good example of how the female form is represented in the San Andrés collection. It is solid, incompletely fired with a medium sand temper. The navel is indicated with a punctation. The right thigh is present and has a mark on the bottom that appears as though the surface was scraped. The torso wears a round pendant on the chest.

T-15  
U7/9  
FS #: 319  
Unit 7, Level 9, 150-170 cmbd  
4.5 cm (L), 2.0-4.2 cm (W), 1.5-2.0 cm (T)  
10YR 7.5/2, light gray  
Early Franco Phase



Figure A.46 - Figurine T-15,  
Early Franco Phase figurine torso

Torso T-15 was found with torso T-16 in Unit 7. Torso T-15 is a female torso with a constricted waist and slight breasts. The left shoulder and upper arm are present. The navel is indicated by a round punctation. A round pendant is present on the chest. It is solid, incompletely fired, with a fine sand temper.



T-16  
U7/9  
FS #: 319  
Unit 7, Level 9, 150-170 cmbd  
4.3 cm (L), 2.0-5.0 cm (W), 1.1-2.2 cm (T)  
10YR 6/2 and 10YR 6/1  
light brownish gray and gray  
with areas of 10YR 4/2,  
dark grayish brown  
Early Franco Phase



Figure A.47 - Figurine T-16,  
Early Franco Phase  
figurine torso

Torso T-16 was found in association with torso T-15. T-16 is one of the more crudely-made torsos in the collection. The surface, unlike the smooth surfaces of most of the figurines, is bumpy with small nodules present, and it appears reburned. This solid figurine was made with a fine sand temper and incompletely fired. It may be a female torso due to the constricted waist and subtle indications of breasts. A light trace of a pendant is present on the chest. Both shoulders are present but the torso is partially broken on the right side and broken below the abdominal area.

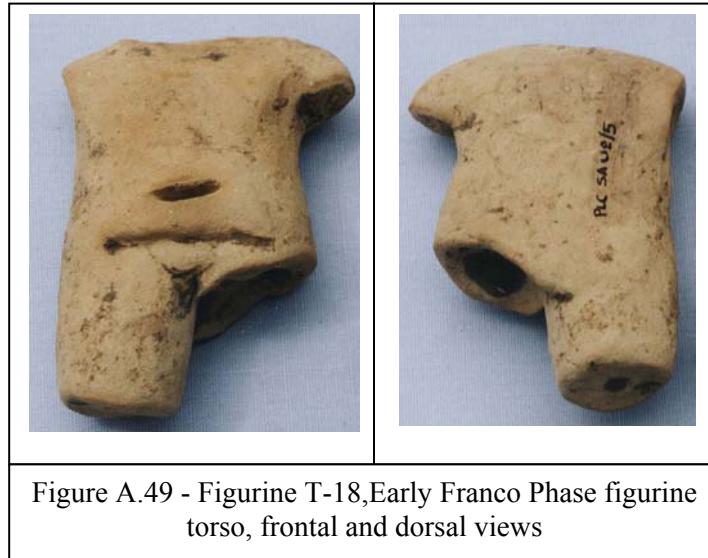
T-17  
U8/5  
FS #: 337  
Unit 8, Level 5, 80-100 cmbd  
5.5 cm (L), 2.7-4.4 cm (W), 2.1-2.6 cm (T)  
10YR 8/2.5, very pale brown  
Early Franco Phase



Figure A.48 - Figurine T-17, Early Franco Phase figurine torso, frontal and dorsal views

Figurine T-17 is one of the few female torsos in the San Andrés collection with clothing, however minimal it may be. The torso wears a simple pubic flap. The flap is a rounded rectangular shape with vertical striations on it, perhaps to suggest that it is a woven piece of garment. A horizontal line is present on either side of the pubic cloth, perhaps to indicate a string. The breasts are subtle, and the nipples are indicated by horizontal incised marks. The navel is also horizontally incised. The buttocks are separated with a deep vertical cleft. The waist is pinched below the breasts. A partial round pendant is present on the chest. The torso is solid and incompletely fired with a fine sand temper. Figurines T-18, H-24 to H-26, L-115 to L-120, and U-22 were found in association with this torso.

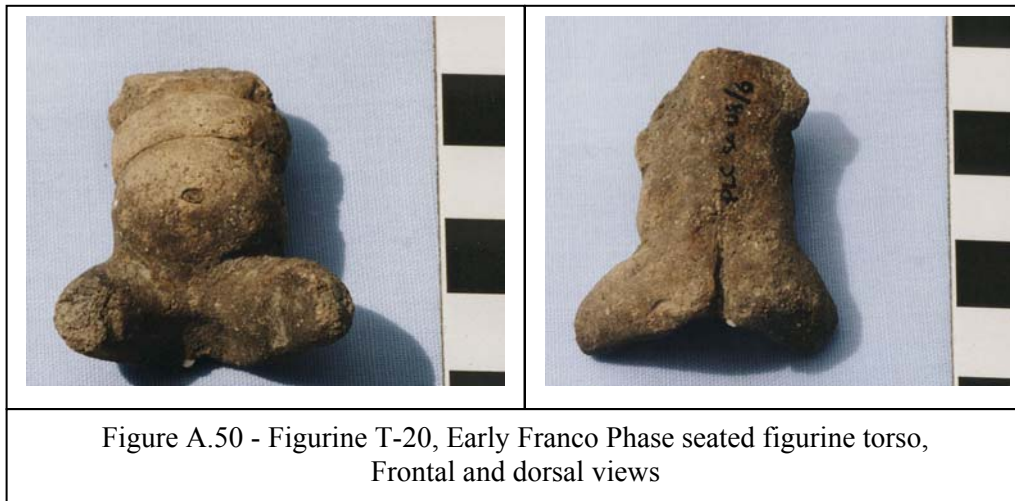
T-18  
U8/5  
FS #: 337  
Unit 8, Level 5, 80-100 cmbd  
6.5 cm (L), 2.0-4.8 cm (W), 1.2-2.0 cm (T)  
10YR 8/2, white with 7.5YR 7/6, reddish yellow on front  
Early Franco Phase



Figurine T-18 is one of the few male torsos in the collection. The characteristics that suggest that this torso is male are the flat and rectangular body, and a smooth chest with no undulations. The torso is wearing a pubic covering and a dark area is present below the covering, possibly where male genitalia had once been present or what may have been part of a loincloth. A horizontal line below the navel is incised and similar to figurine T-17, perhaps to indicate a string attached to the pubic covering. The pubic covering is a rare male garment because male Olmec figures usually wear more clothing, such as loincloths and belts high on the waist. The torso wears no ornamentation. A large and horizontally long punctation is present on the abdomen to indicate the navel. The torso is solid and incompletely fired with a fine, glassy volcanic ash temper. A reddish yellow pigment (7.5YR 7/6) is present on the front. This torso was found in association with figurines T-17, H-24 to H-26, L-115 to L-120, and U-22.

Figurine T-19 (picture not available) is from Unit 8, Level 6 (PLCSAU8/6, FS# 345). The small fragment is an upper female torso with the right shoulder and breast present. It is approximately 2.8 cm long, 1.3-2.6 cm wide, and 1.4-1.9 cm thick. A faint, round appliqué is present on the breast to indicate a nipple. The fragment is solid, incompletely fired with a fine sand temper, and is pinkish white (5YR 8/2) in color.

T-20  
U8/6  
FS #: 347  
Unit 8, Level 6, 100-120 cmbd  
3.8 cm (L), 2.1-3.6 cm (W),  
0.6-2.0 cm (T)  
5YR 5/1, gray with some  
7.5YR 7/2, pinkish gray  
Early Franco Phase



Figurine T-20 is one of the few seated torsos in the collection. The torso is possibly a pregnant female due to the presence of a full, round abdomen. A punctuated nipple is present on the right side. The buttocks are separated with a vertical cleft. The torso wears a thick belt above the abdomen. For this reason, the torso might be a male figure. In general, male figurines wear belts high on the waist, particularly ballplayers. Nevertheless, this torso is similar to Drucker's Plate 31-i, which is a seated female figurine with a protruding abdomen but not wearing a belt (See Chapter 4). Figurine T-20 is solid, incompletely fired, possibly reburned, and has a fine sand temper.

Figurine T-21 (picture not available) is from Unit 8, Level 6 (PLCSAU8/6, FS# 347). The fragment is a top portion of a female torso with the shoulders and chest present. The breasts are minimally pronounced. In between the breasts is a dark area, possibly where a pendant had previously been present. The torso is approximately 4.9 cm long, 1.0-1.7 cm wide, and 1.0-1.6 cm thick. It is white in color (10YR 8/2). It is solid, incompletely fired, and has a medium sand temper. Figurines H-27, T-20 (above), and L-121 were found in association with this torso fragment.

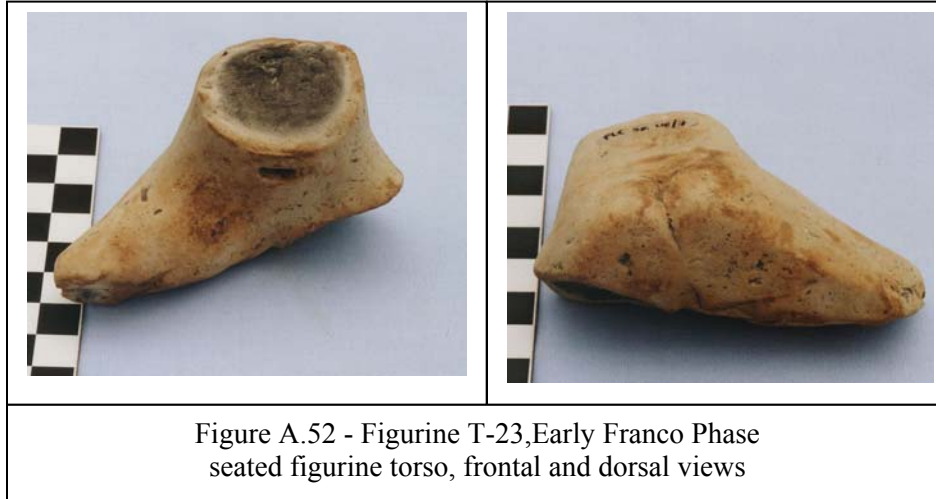
T-22  
U8/7  
FS #: 367  
Unit 8, Level 7, 120-140 cmbd  
4.6-4.7 cm (L), 2.7-5.4 cm (W),  
1.0-2.5 cm (T)  
5YR 8/1 & 8/3, white & pink with some  
7.5YR 6/2, light brown  
Early Franco Phase



Figure A.51 - Figurine T-22, Early Franco  
Phase seated figurine torso

Figurine T-22 is a seated female torso and the most complete figurine in the San Andrés collection. The head, hands, and feet are all that are missing. This torso sits with its legs crossed at the ankles and with arms resting on the thighs. The large and drooping breasts probably represents a female figure of a more mature age. The right breast has a light punctation for a nipple, but a punctation is absent on the left breast. A round pendant is present on the chest. Below the rounded abdomen is a concavity the size of a thumb. The maker of this figurine had pushed the bottom of the abdomen with their finger and left it this way, the reason for which is unknown. Perhaps this characteristic was to indicate that this particular figure was past the age of childbearing. An alternative view is that this female represents someone who has just given birth; thus the full breasts and concave abdomen. The torso is solid and incompletely fired with a fine sand temper. The following figurines were found in association with T-22: T-23 to T-25, L-122 to L-130, A-09, and U-23 to U-26.

T-23  
U8/7  
FS #: 367  
Unit 8, Level 7, 120-140 cmbd  
8.8 cm (L), 1.9-5.5 cm (W), 1.0-3.4 cm (T)  
10YR 8/2, white with some  
5YR 7/6 & 6/6, reddish yellow  
Early Franco Phase



Figurine T-23 is the bottom half of a seated torso. The waist, buttocks, and upper thigh are present. A deep, horizontal incision is present on the abdomen to indicate the navel. The buttocks are separated with a subtle vertical incision. The way in which the torso sits indicates that the legs were probably splayed out as opposed to being bent and crossed at the calves or ankles. The torso was found in association with figurines T-22, T-24, T-25, L-122 to L-130, A-09, and U-23 to U-26. Figurine T-23 is solid and incompletely fired. It has a fine, glassy volcanic ash temper. The gender of this torso fragment is difficult to determine due to the limited gender characteristics present.

Figurine T-24 (picture not available) is from Unit 8, Level 7 (PLCSAU8/7, FS# 367). It is an upper torso fragment of a chest. The torso is most likely female due to the presence of minimally pronounced breasts. A faint, round pendant, broken at the top, is present on the chest. The torso fragment is solid, incompletely fired, and has a fine sand temper. It is approximately 3.0 cm long, 2.6-3.5 cm wide, and 1.6 cm thick. It is white in color (10YR 8/2). Figurines found in association with this torso are T-22, T-23, T-25, L-122 to L-130, A-09, and U-23 to U-26.

Figurine T-25 (picture not available) is from Unit 8, Level 7 (PLCSAU8/7, FS# 367). The figurine is a torso fragment of the chest and abdominal area. The shoulders, hips, and limbs are absent. The torso may be male because of the straightness and rectangular shape of the body, and the lack of curves or undulations. A deep socket is present on one end where a head may have been inserted. The torso is approximately 4.8 cm in length, 2.2-2.9 cm in width, and 1.8 cm in thickness. It has a light gray color (10YR 6.5/1). It is solid with a medium sand temper and is incompletely fired. This torso was found in association with T-22 to T-24, L-122 to L-130, A-09, and U-23 to U-26.

T-26  
U8/F1-7  
FS #: 407  
Unit 8, 120-140 cmbd  
Feature 1-7  
6.3 cm (L), 2.6-4.1 cm (W), 1.9-2.3 cm (T)  
10YR 7.5/2, light gray  
Early Franco Phase



Figurine T-26 is the lower fragment of a female torso that includes the waist, hips, and both thighs. The female characteristics are the constricted waist, flaring hips and thighs, and the pubic "Y." A horizontal line below the abdomen may signify a string for a loincloth apron. A punctation on the abdomen indicates the navel. The torso is solid, tempered with fine sand, and incompletely fired. Figurines T-27, T-28, L-131, and L-132 were found in association with T-26.



T-27  
U8/F1-7  
FS #: 407  
Unit 8, 120-140 cmbd  
Feature 1-7  
8.4 cm (L), 0.9-4.4 cm (W), 1.1-2.3 cm (T)  
10YR 7/3, very pale brown  
Early Franco Phase



Figurine T-27 is a classic example of a male figurine and is one of the more complete figurines in the San Andrés collection. It resembles the torso in Drucker's (1952) Plate 31-c as well as a stone sculpture from Loma del Zapote (Cyphers 1997:Fig.7.16), a site 3 km south of San Lorenzo. The stone sculpture, in turn, is similar to the figure in the Oxtotitlán Cave painting in Guerrero, Mexico (Grove 1970: Mural1). The similarities suggest a common mode of Middle Formative period dress for males that include a loincloth with a thick belt having hip cloths hanging down from it, and a pendant or pectoral worn on the chest. The belt is worn high around the abdominal area, unlike the low-slung aprons that female figures wear. T-27 wears a round pendant with a smaller bead above it, and a possible cape. The torso is solid, incompletely fired with a fine sand temper, and has a deep head socket. T-27 was found in association with figurines T-26, T-28, L-131, and L-132.



T-28  
U8/F1-7  
FS #: 407  
Unit 8, 120-140 cmbd  
Feature 1-7  
5.0 cm (L), 3.0-4.7 cm (W), 1.9-2.4 cm (T)  
10YR 7/3, very pale brown  
Early Franco Phase



Figure A.55 - Figurine T-28, Early Franco Phase figurine torso

Figurine T-28 is a fragment of a seated female torso. Two characteristics make this a seated figurine. One characteristic is that although the legs were broken off, the location of the breakage indicates that the legs were placed in front instead of below the hips. The second characteristic is that the bottom of the torso is somewhat flat, allowing the figure to be positioned on this flat surface. The torso is female due to the presence of breasts, a pinched waist, hips that flare out, and prominent buttocks. Nipples are indicated on the breasts with a punctated technique. A punctation on the mid-abdomen indicates the navel. The torso wears a kind of band or belt below the breasts or high on the waist, and is connected to a round pendant on the chest. T-28 is solid and incompletely fired with a fine sand temper. It was found in association with figurines T-26, T-27, L-131, and L-132.

T-29  
U8/8  
FS #: 418  
Unit 8, Level 8, 140-160 cmbd  
6.7 cm (L), 5.0 cm (W), 2.2-2.6 (T)  
10YR 6/2 & 7/2,  
light brownish gray, light gray  
Early Franco Phase



Figurine T-29 is a solid torso fragment of a female figure. The abdominal area is present along with the left shoulder and the left side of the chest. The left breast is minimally pronounced and has a nipple indicated by a punctation. The waist flares out at the bottom where the hips would begin. The mid-left portion of the abdomen is broken off. A horizontal incision on the central abdomen indicates the presence of a navel. The torso has a fine sand temper and is incompletely fired. It was found in association with H-31, T-30, and L-133.

T-30  
U 8/8  
FS #: 418  
Unit 8, Level 8, 140-160 cmbd  
4.8 cm (L), 5.3 cm (W), 1.9-2.1 cm (T)  
7.5YR 7.5/2, pinkish gray with some  
7.5YR 6/8, reddish yellow  
Early Franco Phase



Figure A.57 - Figurine T-30, Early  
Franco Phase figurine torso

Figurine T-30 is an upper torso fragment of a male figure. The upper left arm, both shoulders, and the chest are present. This torso is unique because it is the only figurine in the San Andrés collection that appears to wear clothing on the upper body. Parallel incisions around the left arm show a fringe-type detail of a short-sleeved shirt or cape. Two vertical incisions on the chest show the shirt was worn in an open manner. A fragment of a belt with a round ornament is present around the abdominal area. The torso is male because of the lack of undulations on the chest. T-30 is solid, incompletely fired, and has a fine/very fine sand temper. Figurines H-31, T-29, and L-133 were found in association with this torso.

T-32  
U7-8 Feasting refuse  
FS #: 729  
Units 7-8  
3.2 cm (L), 2.5-4.6 cm (W), 1.3-1.7 cm (W)  
10YR 6/3, pale brown  
Early Franco Phase



Figure A.58 - Figurine T-32,  
Early Franco Phase  
figurine torso

Figurine T-32 is a female upper torso fragment. It has small breasts with punctated nipples. A round pendant is present on the chest in addition to smaller beads below and on either side of the central pendant. This type of ornamentation is similar to that found at La Venta, particularly the torso in Drucker's Plate 35-1 (1952). Torso T-32 is incompletely fired, solid, and has a fine sand temper.

T-33  
U7 Feasting refuse  
FS #: 765  
Unit 7  
12.0 cm (L), 2.4-6.3 cm (W), 1.4-2.5 cm (T)  
10YR 8/2, white  
Early Franco Phase



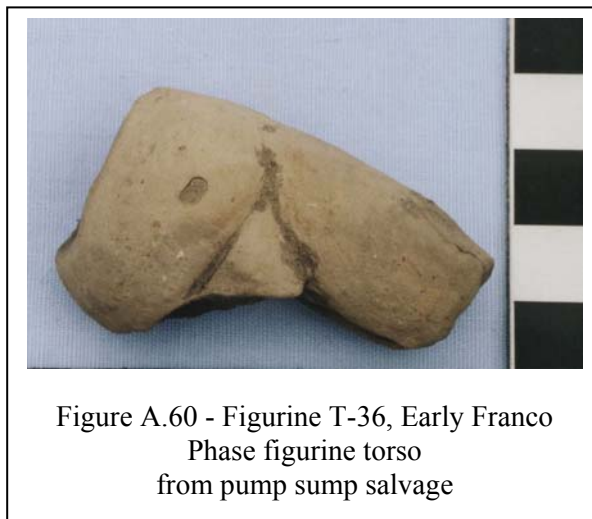
Figure A.59 - Figurine T-33, Early Franco Phase figurine torso, frontal and dorsal views

Figurine T-33 is the largest solid torso in the collection. Based on the characteristics that Follensbee uses to distinguish between male and female torsos, figurine T-33 is a female torso. Although no breasts are present, two female attributes are the constricted waist and the low-slung loincloth apron worn by the torso. If the torso were a male, the shape of the body might be more cylindrical or rectangular in shape, and the loincloth would be thicker and worn higher on the waist. This particular torso may portray a young female of pubescent age. It is incompletely fired, and has a fine, glassy volcanic ash temper. A red pigment may have been applied to the torso. The apron shows a woven detail that is one of the finer examples of textiles used at San Andrés.

Figurine T-34 (picture not available) is a fragment of an upper torso. It was found from the Unit 7 feasting refuse (FS# 816). Its crude construction makes the gender difficult to determine. Nevertheless, a faint vertical groove along the upper abdomen and a horizontal groove on the left side of the abdomen may indicate that the torso is a male wearing a belt high on the waist. No breasts are present but the waist appears somewhat constricted. The torso is solid, has a medium sand temper, and is incompletely fired. It is about 3.6 cm(L)x1.8-3.8 cm (W)x1.2-2.0 cm(T). It is light gray (10YR 7/1) in color. The torso was found with figurine head H-32.

Figurine T-35 (not pictured) is from Unit 8, Level 6 (FS# 823). The figurine is a bottom torso fragment with the upper legs present. A fingerprint was present on the right side and bottom edge of the right leg. Warren Barbour's analysis of the fingerprint concludes that it most likely was a female fingerprint (personal communication, 2000). The torso appears to have a somewhat constricted waist. A navel is indicated by a punctation on the abdomen. The hips appear neither straight nor curvy, but more like that of an infant. The torso is very pale brown in color (10YR 7/3). It is approximately 4.6 cm in length, 1.9-3.9 cm in width, and 0.9-1.6 cm in thickness. It is solid, completely fired, and has no temper. The surface is bumpy, giving the torso a crudely made appearance. Figurine L-142 was found in association with T-35.

T-36  
Pump sump  
FS #: 824  
4.7 cm (L), 1.6-3.3 cm (W),  
1.6-2.1 cm (T)  
10YR 7/1, light gray  
Early Franco Phase



Figurine T-36 is a lower torso fragment of an abdomen and left thigh. The torso is possibly a female figure due to the curve of the hip and flaring thigh. A triangular-shape pubic covering is present. A rectangular punctation on the abdomen indicates a navel. The torso is solid and incompletely fired with a fine, glassy volcanic ash temper. It was found in association with H-33, and L-143 to L-145.

T-37  
U8 West Wall Feasting refuse  
FS #: 842  
Unit 8  
6.2 cm (L), 2.7-4.5 (W), 1.3-2.4 (T)  
5YR 8/1, white  
Early Franco Phase

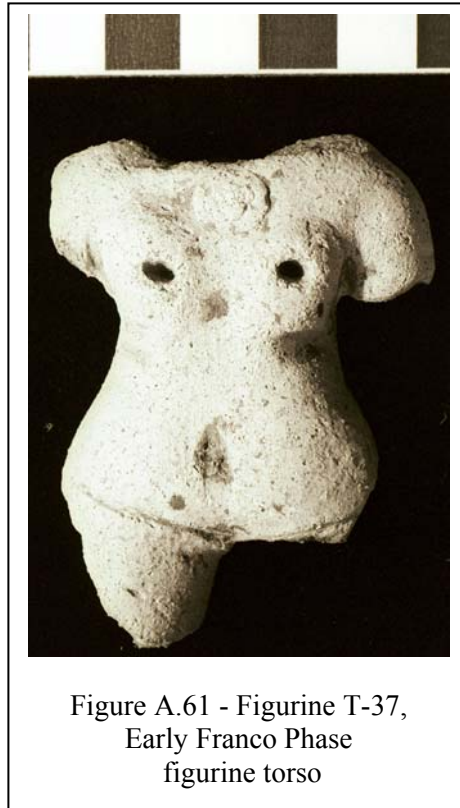


Figure A.61 - Figurine T-37,  
Early Franco Phase  
figurine torso

Figurine T-37 is a female torso found in the west wall feasting refuse of Unit 8. The breasts are relatively large in comparison to those of the other San Andrés figurine torsos. The nipples are indicated by deep punctations. The waist is constricted and the hips flare out. The navel is indicated with a small punctation, and a dark area surrounds the navel, as though the surface was scratched or scraped off. A horizontal incision along the bottom of the abdomen is present, perhaps to indicate the strings of a loincloth or other garment worn by this particular figure. A fragment of the upper right thigh is present as well as both shoulders and the top of the left arm. A round pendant is present on the chest. The torso is solid with fine sand temper and is incompletely fired.

T-38  
U7/4  
FS #: 866  
Unit 7, Level 4, 60-80 cmbd  
6.4 cm (L), 2.8-3.0 cm (W), 0.8-2.1 cm(T)  
7.5YR 7/4, pink  
Early Franco Phase



Figure A.62 - Figurine T-38,  
Early Franco Phase figurine torso

Figurine T-38 is an upper torso fragment of a chest with its right arm. The limited characteristics on the torso make its gender indeterminable. Two subtle punctations on the chest indicate nipples. The right arm is in a raised position that is not found in any other San Andrés torso. It is solid and incompletely fired with a fine sand temper. It is pink (7.5YR 7/4) in color, but appears like a light brown. Its dimensions are approximately 6.4 cm in length, 2.8-3.0 cm in width, and 0.8-2.1 cm in thickness. Figurines H-34, T-39, and L-146 were found in association with this torso fragment.

Figurine T-39 (picture not available) is from Unit 7, Level 4 (PLCSAU7/4, FS# 866). It is a small fragment of an upper torso. The left breast, left shoulder, and the top portion of the left arm are present. The presence of a relatively large breast makes this torso female. Its color is pinkish white (7.5YR 8/2) with dimensions of 4.0 cm in length, 4.8 cm in width, and 0.9-1.7 cm in thickness. It is solid, incompletely fired, and has a fine sand temper. This torso was found in association with H-34, T-38, and L-146.



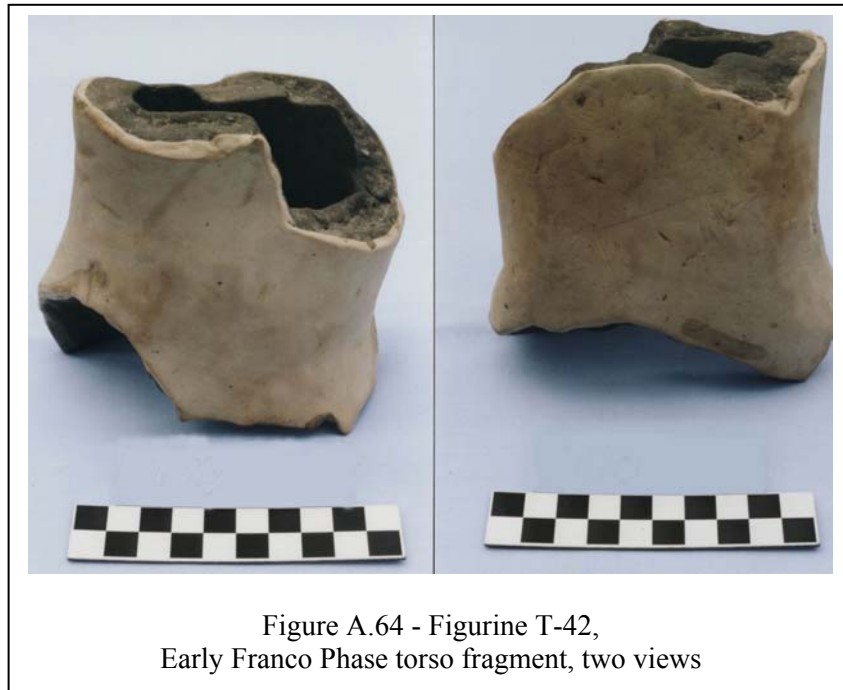
T-40  
U7-8 Feasting refuse  
FS #: 875  
Units 7-8  
7.8 cm (L), 2.6-4.7 cm (W), 1.2-2.2 cm (T)  
5YR 8/1, white (front)/  
10YR 8/2, white (back)  
Early Franco Phase



Figure A.63 - Figurine T-40, Early  
Franco Phase figurine torso

Figurine T-40 is one of the more complete torsos in the San Andrés collection because of the presence of the upper left arm and the upper right thigh. The torso is female with subtle breasts, a pinched waist, flaring hips and thigh, and a pubic triangle. A shallow punctation in the middle of the abdomen indicates the navel. A round pendant is present on the chest. It is solid, incompletely fired with a medium sand temper.

T-42  
U7 Feasting refuse  
Unit 7  
12.0 cm (L), 10.8-11.6 cm (W), 1.0-2.3 cm (T)  
5YR 8/1, white  
Early Franco Phase



Figurine T-42 is the largest figurine fragment in the San Andrés collection. It is also the only hollow torso fragment. It is most likely an abdominal section of a figurine torso. The fragment has no decoration but is instead a smooth, almost cylindrical piece. It is made with a white, fine glassy volcanic ash temper. Given the dimensions of this fragment alone, this particular figurine is unusually large and an uncommon occurrence for Middle Formative period figurines in general.

T-43  
U7-8 Feasting refuse  
Units 7-8  
4.4 cm (L), 2.1-4.0 cm (W), 1.3-1.7 cm (T)  
7.5YR 8/2, pinkish white  
Early Franco Phase



Figure A.65 - Figurine T-43,  
Early Franco Phase  
figurine torso

Figurine T-43 is a fragment of a female upper torso. It has small, round breasts with punctations for nipples. The waist is pinched below the breasts, and the navel is indicated with a deep punctation. The torso wears a round pendant on the chest. The upper-most right arm is present as well as a shallow head socket. It is solid and incompletely fired with a fine sand temper.

T-44  
U7-8 Feasting refuse  
Units 7-8  
3.5 cm (L), 5.8 cm (W), 1.7-2.0 cm (T)  
10YR 8/2 with 7.5YR 5/6,  
white with strong brown  
Early Franco Phase



Figure A.66 - Figurine T-44,  
Early Franco Phase  
figurine torso

Figurine T-44 is a solid torso fragment broken just below the breasts. Both of the shoulders are present but the arms appear to have broken off just below the shoulders. The torso is female with small, almost round breasts. Subtle punctations mark the nipples. It is tempered with fine sand and is incompletely fired.

## Early Franco Limbs

The limbs from the Early Franco levels make up the largest group of fragments in the San Andrés collection. Ninety-eight fragments, or approximately 32 percent of all of the figurines, are Early Franco limbs. Seventeen of the fragments are from the Unit 7-8 feasting refuse and pump sump salvage (see below). Of the remaining 81 fragments, 74 are solid limbs, 3 are hollow, and 4 have not been examined (L-163, L-164, L-171, L-172). The solid limb fragments consist of 30 legs, 27 arms, 6 foot fragments, one hand fragment, 10 are undetermined. The 3 hollow limb fragments consist of a hand, an arm, and a foot. The colors range from white, pinkish white, pink, to shades of red, brown, and gray. Most of the Early Franco limbs have a fine sand temper, with the exception of 5 limbs with medium sand temper, 3 with very fine sand temper, and 5 limbs with fine volcanic ash temper. Almost all of the limbs are incompletely fired except for 3 limbs (L-036, L-100, L-113, L-115, L-122, L-150) that are completely fired. Examples of Early Franco limbs are Figures 67-75.

Twelve limb fragments were recovered from the Unit 7-8 feasting refuse. They include: 2 leg fragments (L-138 and L-139), 2 foot fragments (L-152 and L-156), 6 arm fragments (L-140, L-141, L-157, L-158, L-159, L-160), and 2 fragments not analyzed (L-161 and L-162). The 10 analyzed fragments consist of 8 solid and 2 hollow limbs. Six limb fragments are white in color, one is pinkish gray, one is pinkish white with areas of reddish yellow, and two are reddish yellow. Most are made with a fine sand temper, one is of a fine volcanic ash temper, and one has a medium-fine sand temper. Almost all of the limb fragments are incompletely fired except for L-140, which is completely fired. Four of these limbs may have been reburned (L-138, L-139, L-152, L-156).

Five limb fragments are from the pump sump salvage. The limbs consist of: 2 arms (L-143 and L-151), 2 legs (L-144 and L-145), and 1 undetermined leg fragment (L-137). The undetermined fragment is hollow and the other four fragments are solid. All of the limbs were made with a fine volcanic ash temper. Four limbs are incompletely fired; the fifth limb is reburned. Three limbs are white in color, one is pink, and one is light gray.

L-28  
U1/9  
FS #: 259  
Unit 1, Level 9, 115-125 cmbd  
2.6 cm (L), 1.1-1.3 cm (W), 0.6 cm (T)  
7.5YR 8/2, pinkish white  
Early Franco Phase



Figure A.67 - Figurine L-28,  
Early Franco Phase hand

L-98 and L-99  
U8/4  
FS #: 298  
Unit 8, Level 4, 60-80 cmbd  
Early Franco Phase  
L-98: 6.9 cm (L), 1.1-3.7 cm (W),  
1.8-2.8 cm (T)  
7.5YR 8/2 with some 7.5YR 5/6,  
pinkish white with some strong brown  
L-99: 6.1 cm (L), 1.3-2.2 cm (W),  
1.3-2.2 cm (T)  
Mottled 7.5YR 8/2 and 7.5YR 7/2,  
pinkish white and pinkish gray



Figure A.68 - Figurines L-98 and L-  
99 respectively, Early Franco Phase  
figurine legs

L-100  
U7/8  
FS #: 307  
Unit 7, Level 8 140-150 cmbd  
2.5 cm (L), 2.4 cm (W), 1.2 cm (T)  
7.5YR 7.5/2, pinkish white  
Early Franco Phase



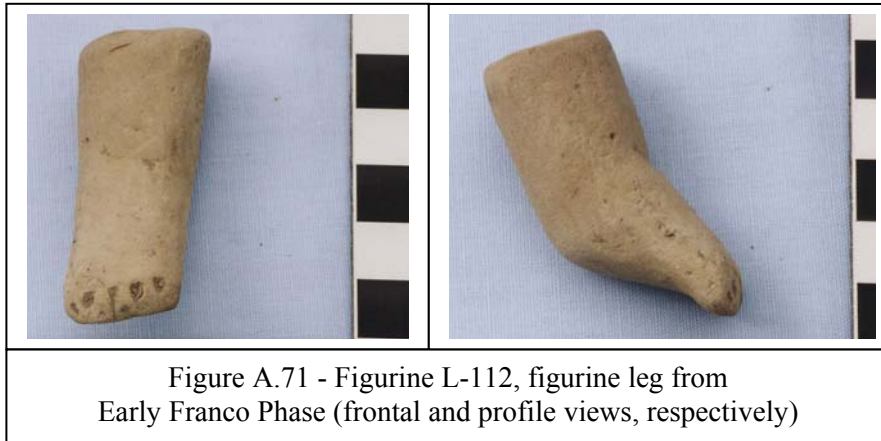
Figure A.69 - Figurine L-100,  
Early Franco Phase foot  
fragment

L-108  
U7/9  
FS #: 319  
Unit 7, Level 9, 150-170 cmbd  
8.0 cm (L), 2.7-3.3 cm (W), 0.6-3.7 cm (T)  
10YR 6/2, light brownish gray  
Early Franco Phase



Figure A.70 - Figurine L-108, hollow figurine arm from  
Early Franco Phase (view of palm and back of hand,  
respectively)

L-112  
U7/9  
FS #: 319  
Unit 7, Level 9, 150-170 cmbd  
5.3 cm (L), 1.9-2.1 cm (W), 0.9-2.0 cm (T)  
10YR 7.5/1, light gray  
Early Franco Phase



L-123 and L-125  
U8/7  
FS #: 367  
Unit 8, Level 7, 120-140 cmbd  
Early Franco Phase  
L-123: 3.2 cm (L), 0.5-0.9 cm (W),  
0.5-1.0 cm (T)  
7.5YR 7.5/2, pinkish gray

L-125: 12.4 cm (L), 1.5-2.2 cm (W),  
1.8-2.5 cm (T)  
10YR 7/2 with some 10YR 6/3,  
light gray with some pale brown





L-131 and L-132  
 U8/F1-7  
 FS #: 407  
 Unit 8, 120-140 cmbd  
 Feature 1-7  
 Early Franco Phase  
 L-131: 3.0 cm (L),  
 1.2-1.8 cm (W), 0.8+(W)  
 7.5YR 8/2, pinkish white  
 L-132: 5.0 cm (L),  
 3.0-3.8 cm (W), 0.6-0.9 cm (W)  
 5YR 8/1, white



Figure A.73 - Figurines L-131 (left), L-132 (right) Early Franco Phase figurine limbs

L-138  
 U8 W Wall Feasting refuse  
 FS #: 738  
 Unit 8  
 4.9 cm (L), 1.8-2.8 cm (W),  
 0.3-1.0 cm (T)  
 5YR 6/6, reddish yellow  
 Early Franco Phases



Figure A.74 - Figurine L-138, Early Franco Phase hollow figurine leg, views of front and heel of foot

L-144  
Pump sump  
FS #: 824  
7.8 cm (L), 1.3-3.1 cm (W),  
0.9-4.2 cm (T)  
5Y 8/1 with some 10YR 8/1,  
white with white  
Early Franco Phase



Figure A.75 - Figurine L-144, Early Franco Phase  
figurine leg from pump sump salvage, view of both  
sides

L-156  
U7 Feasting refuse  
Unit 7  
6.6 cm (L), 2.3-4.1 cm (W), 0.7-1.1 cm (T)  
10YR 8/2, white  
Early Franco Phase



Figure A.76 - Figurine L-156,  
Early Franco Phase  
hollow figurine foot

## Early Franco Animal Figures

A-06

U7/F4-7

FS #: 280

Unit 7, 120-140 cmbd

Feature 4-7

2.8 cm (L), 0.7-1.4 cm (W), 1.7 cm (T)

5YR 8/1, white (very pale brown)

Early Franco Phase



Figure A.77 - Figurine A-06,  
Early Franco Phase animal figurine

Figurine A-06 is a head fragment of a bird, probably a duck. A pointed beak is present, along with round, appliquéd pellets for eyes. The head is solid and incompletely fired with a fine sand temper. It was found in association with limbs L-090 to L-093.

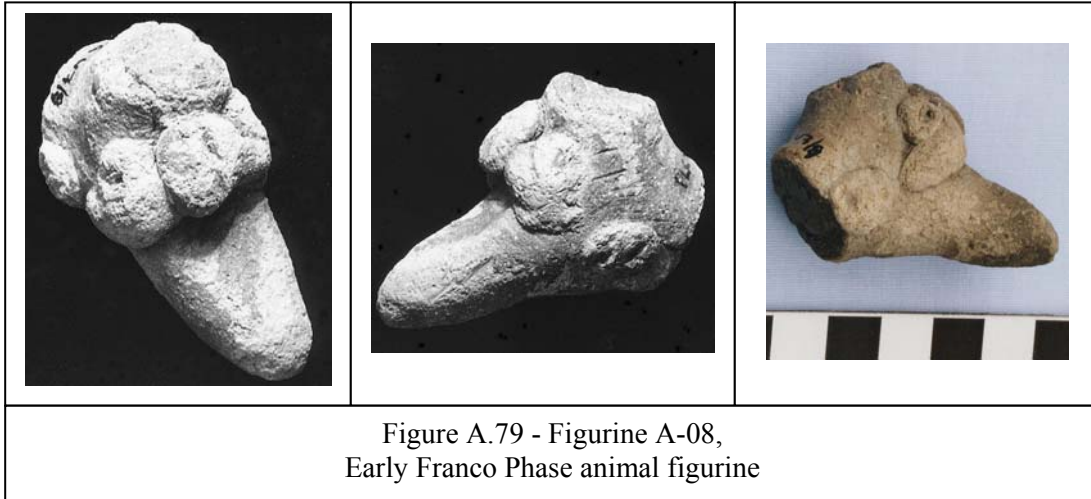
A-07  
U7/8  
FS #: 307  
Unit 7, Level 8, 140-150 cmbd  
4.3 cm (L), 1.7-2.3 cm (W), 2.1-3.5 cm (T)  
10YR 7/2, light gray  
Early Franco Phase



Figure A.78 - Figurine A-07,  
Early Franco Phase  
animal figurine

Figurine A-07 is a head fragment of an animal, possibly a paca. A long, thick neck is present along with the head. The animal appears to have a long snout or beak that is slightly open. The eyes are round with a light punctation in the center and eyelids are present above each eye. The head is solid, incompletely fired, and has a fine sand temper. It was found in association with L-100 to L-107 and U-21.

A-08  
U7/9  
FS #: 319  
Unit 7, Level 9, 150-170 cmbd  
5.4 cm (L), 1.0-2.6 cm (W), 1.1-3.5 cm (T)  
7.5YR 7/2 with 5YR 5/1,  
pinkish gray with gray  
Early Franco Phase



One animal figurine, A-08, was found in Level 9 of Unit 7. It appears bird-like with a beak featuring knob-like ornamentation, possibly depicting a Muscovy duck. An ornament or a circular detail in the center of the head is present along with two globular eyes on either side of it. Two round nodules with small incisions appear on the lower area of both sides of the head. The top and neck areas appear broken. The head is solid and incompletely fired with a fine sand temper.

A-09  
U8/7  
FS #: 367  
Unit 8, Level 7, 120-140 cmbd  
2.3 cm (L), 1.2-1.6 cm (W), 1.2-1.6 cm (T)  
10YR 8/1, white  
Early Franco Phase



Figure A.80 - Figurine A-09,  
frontal and top views,  
Early Franco Phase animal figurine

Figurine A-09 is the only animal figurine in the collection that appears cat-like, perhaps representing a jaguar. The head itself is round with rounded, full cheeks. A snout, as opposed to a beak, is present that is feline in appearance. A small, slit eye is present on the right side. The mouth is slit and slightly open. Dark spots are present on both sides of the head where ears may have been. A small neck is still attached to the head. This animal figurine is solid with a fine or very fine sand temper, and is incompletely fired. Figurines found in association with this animal head are: T-22 to T-25, L-122 to L-130, and U-23 to U-26.

### **Late Franco Phase (550/500-350 BC)**

The figurines of the Late Franco phase are the second largest group in the San Andrés collection. Fifty-three figurines, or 17 percent of the collection, emerged from the Late Franco levels. The figurines include: 7 heads, 5 torsos, 28 limb fragments, 2 animals, and 11 unidentifiable fragments (U-01 to U-10 and U-31).

#### **Late Franco Heads**

H-02

U1/4

FS #: 95

Unit 1, Level 4

3.7 cm (L), 1.6 cm (W), 1.2 cm (T)

7.5YR 8/4, pink

Late Franco Phase

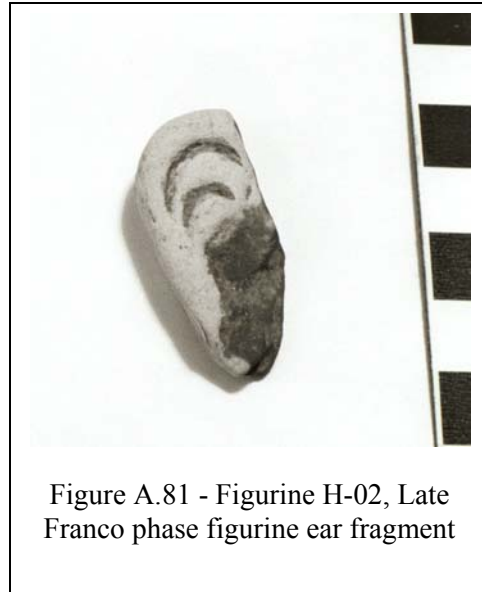


Figure A.81 - Figurine H-02, Late Franco phase figurine ear fragment

Figurine H-02 is a solid ear fragment with a very fine sand temper and is incompletely fired. Two arcs are incised to indicate the cartilaginous details of the ear. The middle to lower portion of the ear is broken off. The size of this ear fragment suggests that it was part of a relatively large figurine head. Figurines found in association with H-02 are a torso (T-01), a limb (L-004), and unidentifiable figurine fragments (U-02 to U-04).

H-03  
U1/5  
FS #: 113  
Unit 1, Level 5, 75-85 cmbd  
4.4 cm (L), 3.1 cm (W), 3.2 cm (T)  
5YR 8/2.5, pinkish white  
Late Franco Phase

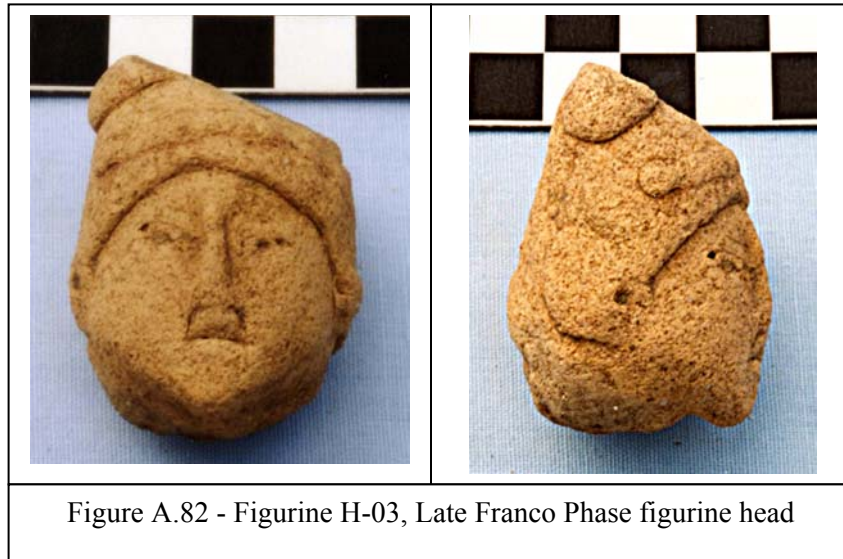


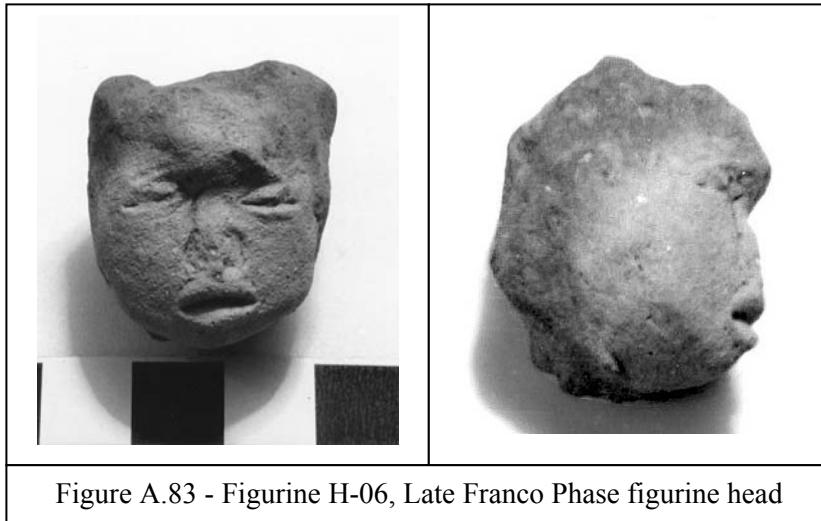
Figure A.82 - Figurine H-03, Late Franco Phase figurine head

A gray core is present in Figurine H-03, which indicates that it was incompletely fired. No hair is apparent, but instead, the head wears a turban with a strip across the front and a fragment of a top crest is on the right side. The top left side appears to have been removed, almost as though it were sliced. The face is framed in a somewhat rounded, inverted U shape. The face is round in shape and has a pointed chin, which may indicate a beard. The mouth is horizontally slit with two smaller slits above it, which may be indicative of facial hair. Because of the female gendered characteristic of the head treatment, and the male gendered characteristic of the facial hair, the gender of this head is indeterminable. The ears have small punctations, and the nose is long and slightly raised. The eyes are indicated by slits at an angle with small punctations. It is solid with a fine sand temper.

Figurine H-04 (not pictured) is from Unit 1, Level 5 (PLCSAU1/5, FS# 118) and is a small fragment of a side of a head with an ear. It is hollow, reburned, has a fine sand temper, and is reddish yellow in color (5YR 7/6). The fragment measures 4.2 cm in length and is 0.6-1.2 cm in thickness. Two punctations are present in the central area of the ear.



H-06  
U1/6  
FS #: 197  
Unit 1, Level 6, 85-95 cmbd  
3.2 cm (L), 2.2 cm (W), 2.5 cm (T)  
5YR 7/6, reddish yellow  
Late Franco Phase



The unique aspect to figurine H-06 is that it appears intentionally undeveloped on the top right side as well as the top and back of the head, and it appears more crude than most of the other heads. The forehead has a slight protuberance or bump on it, as though to convey an injury or deformation. The open mouth is deeply slit with raised areas around it to indicate lips. The nose is relatively flat, although it does have a slight bridge and punctated nostrils. The right eye is not clearly defined but may have been a horizontal slit that appears almost smudged or smoothed out before firing. The left eye is indicated with a horizontal slit and has a faint ridge above it. The overall appearance of the face conveys an expression of an individual in pain or with an illness. The gender is indeterminable because hair and ear features are not present. The head is solid and may have been reburned. It has a fine sand temper. This piece was found with a face fragment (H-07), limb fragments L-012 to L-017, and unidentifiable figurine fragments U-07 and U-08.

H-07  
U1/6  
FS #: 197  
Unit 1, Level 6, 85-95 cmbd  
3.5 cm (L), 2.3 cm (W), 0.7-1.4 cm (T)  
7.5YR 7.5/2, pinkish gray  
Late Franco Phase



Figurine H-07 is a fragment of a nose and upper lip that was part of a hollow head. Although it is a fragment, the dimensions indicate that it was part of a relatively large figurine head. The nose is raised and is outlined with shallow, semi-circular grooves or incisions around the nostrils. The nostrils also have deep, round punctations. The partial upper lip is subtly indicated and has a small indentation above the middle. The temper has fine, glassy volcanic ash elements. It was found with Figurine H-06 as well as limbs and unidentifiable figurine fragments.

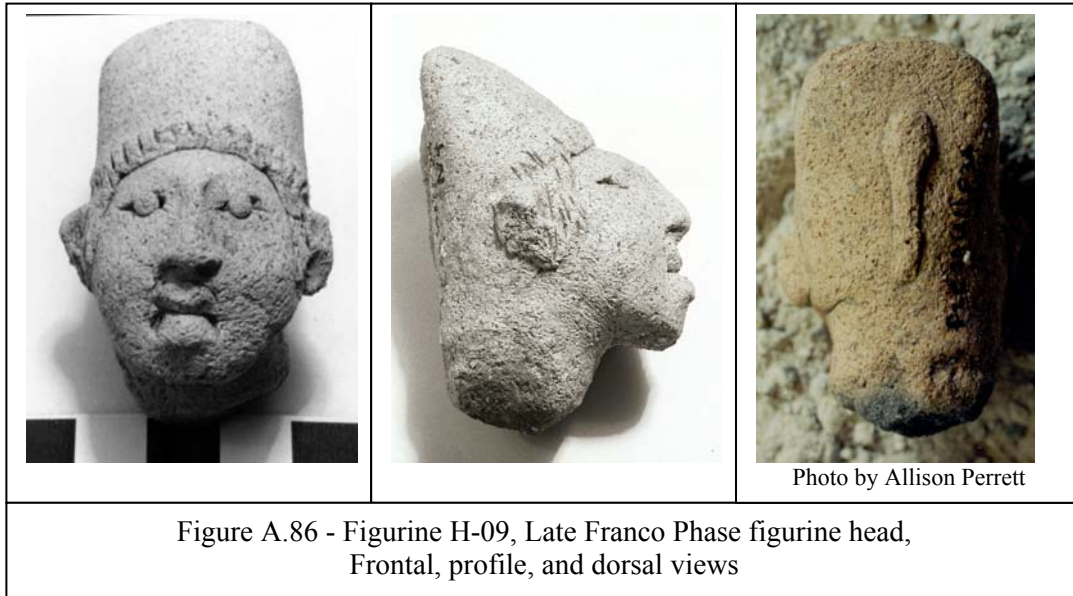
H-08  
U1/7  
FS #: 231  
Unit 1, Level 7, 95-105 cmbd  
3.6 cm (L), 2.7 cm (W), 0.7 cm (T)  
5YR 6.5/4, light reddish brown  
Late Franco Phase



Figure A.85 - Figurine H-08, Late Franco Phase figurine ear fragment

Figurine H-08 is a possible ear fragment with an earplug. The fragment resembles the shape of an ear, but the oval shape in the center makes the fragment appear more like a pottery sherd with decoration. It has a fine sand temper and is almost completely fired but a light gray core remains. The fragment may have been part of a hollow figurine. It was found with figurine torsos T-03 and T-04 and limb fragments L-023 to L-025.

H-09  
 U1/4  
 FS #: 279  
 Unit 1, Level 4, 115-125 cmbd  
 Feature 3A  
 5.7 cm (L), 2.4-3.7 cm (W), 1.3-4.1 cm (T)  
 5YR 8/3.5, pink  
 Late Franco Phase



Figurine H-09 has a dark gray core, indicating that it was incompletely fired. The head wears a tall head garment that has small vertical incisions along the base of it, and has a tassel or ponytail on the back of the head. The head also appears to have hair on the sides of the face and close to the ears, indicated by striations. The ears have two round indentations but no ear ornaments are present. The nose has a distinct bridge, with the nostrils lightly punctated. The mouth appears downturned and is slit with the bottom lip sticking out. A subtle incision above the lips is present, similar to that found on H-03. Given the unusual head garment and the possible facial hair above the lips, this head may be male. On the other hand, the ponytail or tassel on the back and the striated portions of hair by the ears may indicate that this is a female head. The face is framed in a somewhat rounded, inverted U shape, lending another female gendered characteristic. The eyes are unique in that two round pellets are applied over horizontal slits. H-09 is solid and has a fine sand temper.

H-01  
U1/2  
FS # 19  
Unit 1, Level 2, 20-40 cmbd  
3.4 cm (L), 2.4 cm (W), 2.0 cm (T)  
7.5YR 6/5, reddish yellow  
Mixed Late Franco/  
Late Classic/Postclassic Phases

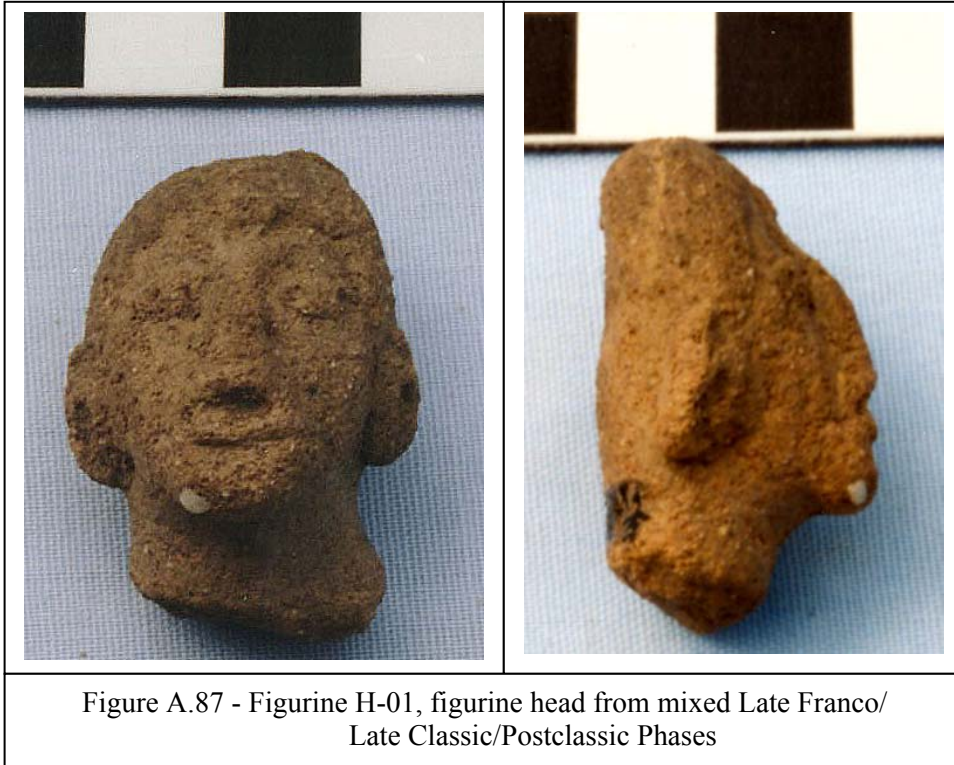


Figure A.87 - Figurine H-01, figurine head from mixed Late Franco/  
Late Classic/Postclassic Phases

Figurine H-01 is solid and completely fired with a fine sand temper. The head appears to have hair that frames the forehead, and a small lump or bun is present on the top left side. The forehead has a subtle round bump on it, indicating an ornament decoration. Such characteristics indicate this to be a female head. The ears appear to have small earpools that are round in shape with a punctation in the center. The shape of the face is oval with a pointed chin. The eyes are small, round appliqué pieces, and the eyebrows are indicated by slight ridges. The nose is slightly raised but is mostly eroded. The open mouth is indicated with a shallow groove. Figurine H-01 was found in association with a limb fragment (L-001). The level that the figurine came from contained mixed Late Franco Phase and Late Classic Phase materials.

## Late Franco Torsos

Figurine T-01 (picture not available) is from Unit 1, Level 4 (U1/4, FS# 95). It is a small fragment of a possible female breast. A round, appliqué pellet is present, which may indicate a pendant or a nipple. The fragment is approximately 1.9 cm long (or wide), 2.6 cm wide (or long), and 0.9 cm thick. It is solid, incompletely fired with a fine sand temper, and is pink in color (7.5YR 8/4). Figurines H-02, L-004, and U-02 to U-04 were found in association with T-01.

T-02  
U1/7  
FS #: 219  
Unit 1, Level 7  
4.9 cm (L), 1.7-3.1 cm (W), 0.7-3.0 cm (T)  
5YR 8/4, pink  
Late Franco Phase

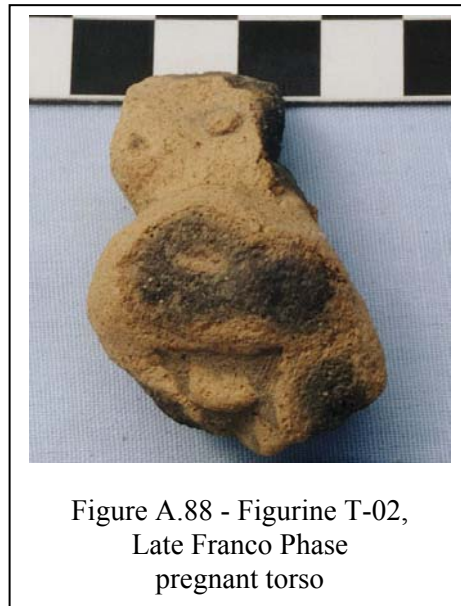


Figure A.88 - Figurine T-02,  
Late Franco Phase  
pregnant torso

Figurine T-02 is one of the few pregnant female torsos in the collection. The right and middle section of the chest is present as well as a full and round abdomen. The abdominal area is broken off showing a dark, incompletely fired layer. The right breast has a nipple indicated by a punctation. The torso wears a pubic flap in the shape of a half crescent. A round clay pellet is appliquéd to the chest to signify a pendant. T-02 is solid, incompletely fired, and has a fine sand temper. Figurines found in association with T-02 are L-018 to L-022, U-09, and U-10.

T-03  
U1/7  
FS #: 231  
Unit 1, Level 7, 95-105 cmbd  
4.1 cm (L), 2.1-3.3 cm (W), 1.6-1.9 cm (T)  
5YR 6.5/4, light reddish brown  
Late Franco Phase



Figurine T-03 is a solid female torso. It is broken below the abdomen and partially broken on the right side. The left shoulder, chest, and abdomen are present. The breasts are round in shape, but the left breast is more pronounced than the right breast. Two punctations mark the nipples on the breasts. Based on the left side of the torso, the waist appears pinched below the breast and begins to flare out. A subtle punctation may be present on the center of the abdomen to indicate the navel. This figurine is solid and almost completely fired with a fine sand temper. It was found in association with figurines H-08, T-04, and L-023 to L-025.

Figurine T-04 (picture not available) is from Unit 1, Level 7 (PLCSAU1/7, FS# 231). The figurine is the bottom of a torso fragment. The bottom half of the abdomen is present as well as the buttocks. The torso is relatively flat around the buttocks allowing the torso to be in a seated posture. Because it is a torso fragment with limited body parts, the gender is indeterminable. It is solid and incompletely fired with a fine sand temper. It is approximately 2.6 cm long, 4.8 cm wide, and 2.5-2.8 cm thick. It is pink in color (5YR 7/4 front, 5YR 7/3 back). Figurines found in association with this figurine are H-08, T-03, and L-023 to L-25.

T-41  
U1/F3-3  
Unit 1, 105-115 cmbd  
Feature 3-3  
4.5 cm (L), 2.3-3.8 cm (W), 1.5-2.1 cm (T)  
Between 2.5YR 6/8 and 5YR 7/6,  
light red and reddish yellow  
Late Franco Phase



Figure A.90 - Figurine T-41,  
Late Franco Phase figurine torso

Figurine T-41 is a female torso with the shoulders, breasts, and abdomen present. A small portion of the upper left arm is also present. The characteristics that make this figurine female are the round, minimally pronounced breasts and the pinched waist, which begins just below the breasts and flares out. The breasts have light punctations for nipples, and the navel is indicated with a light punctation as well. A faint incision is present below the navel and on the left side above the hip area. A round appliqué pellet is present on the chest to represent a mirror pendant. The figurine is solid with a fine sand temper and is completely fired and reburned.



## **Late Franco Limbs**

The Late Franco limbs consist of 28 fragments, which are approximately 9 percent of the total San Andrés collection. All of the limbs are solid in composition, except for one that has not been analyzed (L-165). The limb fragments consist of: 7 legs (L-010, L-017, L-018, L-020, L-025, L-042, L-054), 5 arms (L-006, L-019, L-021, L-023, L-024), 2 hands (L-015, L-043), 1 foot (L-011), and 12 undetermined limb fragments (L-002 to L-005, L-007 to L-009, L-012 to L-014, L-016, L-022). The majority of the Late Franco limbs have a fine sand temper. Four limbs have a very fine sand temper, one limb has temper of extremely fine sand, and one limb has a fine volcanic ash temper. Sizes range from approximately 1.8-6.1 cm in length, and 0.3-3.1 cm in thickness. The clay colors are mostly pink; some are reddish yellow and light brown or pale brown. One limb is pinkish gray and one other limb is pinkish white. White is absent in Late Franco limbs. Six of the limbs are completely fired, two are reburned, and the remaining limbs are incompletely fired.

## Late Franco Animal Figures

A-01

U1/5

FS #: 100

Unit 1, Level 5

2.8 cm (L), 1.9 cm (W), 1.0-1.8 cm (T)

5YR 8/3, pink

Late Franco Phase



Figure A.91 - Figurine A-01,  
Late Franco Phase  
animal figurine

Figurine A-01 is a solid head of an animal figure, possibly a bat. The odd shape of the head is globular and thick on one end and thins out toward the other end, giving the head a snout-like feature. Two indentations appear at the end of the snout, probably representing nostrils. The cheeks appear round and full with the presence of circular appliqué pellets on both sides. The eyes are round appliqué pellets that are on the sides of the head. Two appliqué fillets, possibly eyebrows or ears, sit above the eyes. The head appears more animal-like than human, but the features look unreal or exaggerated. It is reburned and has a fine sand temper.

Figurine A-02 (photo not available) appears to have been a fragment of a hollow figurine or may be a pottery sherd. A small, open beak is present or a small triangular piece may have been cut out of the clay. It is probably from a hollow figurine because its thickness is only 0.7-1.5 cm. It is approximately 4.7 cm long and 2.5 cm wide. It is completely fired with a fine temper. It is pale brown (10YR 6/3) in color. Figurine A-02 was found 75-85 cmbd in brown clay in Level 5 of Unit 1 (PLCSAU1/5, FS#113). It was found associated with the following figurines: H-03, L-006, L-007 and U-05.