



AGRICULTURE STATISTICAL OVERVIEW 96/97

SHIRE OF CUBALLING

Graham Annan – Economist, Mandy Dearden – Development Officer, July 2000



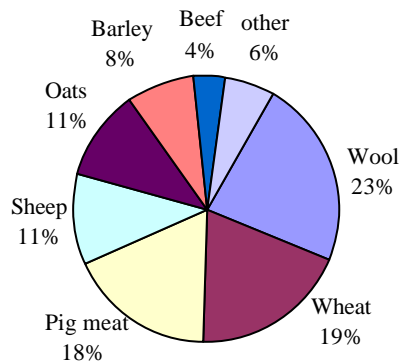
The Shire of Cuballing is part of the Central Agriculture SRD Region¹. It contributes approximately \$20 million to the region's gross value of agricultural production (GVAP). In 1996 the shire covered 125,000 hectares and contained 79 farms². The 1996 census population was 742 - an increase of 106 people since 1986.

Table 1: Comparative Statistics 1996/97

Region	GVAP (\$M)	Farm Area ('000 Ha)	No of Farms
Shire of Cuballing	20	82	79
Central Agriculture SRD	1,467	8,070	3,507
Total WA	4,261	112,482	13,872

In 1996/97 wool was the major commodity produced in Cuballing and was worth over \$4.55 million. The next most valuable commodities were wheat (\$3.75 million) and pig meat (\$3.5 million). Cuballing produced 14% of the regions pig meat in 1996/97.

Fig 1: Proportion of GVAP (Total \$20M) by commodity: 1996/97



Nearly 84 hectares were used to produce \$3.5 million worth of pig meat. This makes up the bulk of intensive animal products from the region with egg production being the other contributor – less than 1 hectare of land is used to produce \$112,000 worth of eggs.

The shire's GVAP (figure two) in 1982/83 was \$13.4 million. During the 14 year period to 1996/97 it peaked at \$21.6 million in 1988/89 and \$22.4 million in 1994/95. By 1996/97 it had fallen slightly to \$19.7 million. Figure

three shows the trends of major commodities and it is easy to match the trend in wool with the trend in the shire's overall GVAP.

Fig 2: GVAP, 1982/83 to 1996/97: Shire of Cuballing

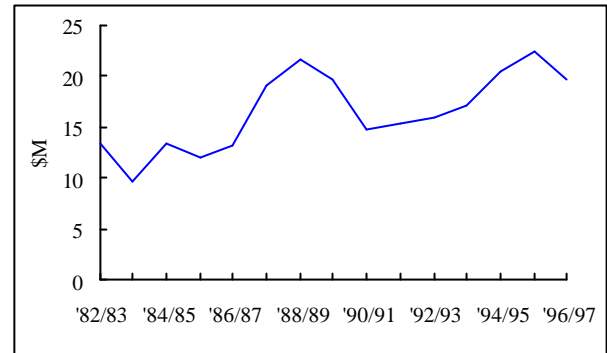


Table 2: Production by major shire, 1996/97

	GVAP (\$M)	No of farms	Area of farms ('000HA)
Lake Grace	132	285	762
Yilgarn	88	124	721
Kulin	87	164	434
Wongan	80	127	353
Narembeen	73	129	383
Kondinin	72	131	364
Kent	70	167	413
Mt Marshall	59	111	636
Bruce Rock	58	112	251
Merredin	51	116	287
Corrigin	50	134	243
Mukinbudin	48	78	285
Cunderdin	46	97	186
Dowerin	44	88	173
Quairading	39	107	196
Kellerberrin	36	78	171
Goomalling	35	107	158
Koorda	35	74	210
Westonia	35	52	219
Wyalkatchem	35	59	149
Williams	34	128	185
Trayning	33	65	151
Tammin	29	50	122
Beverley	27	166	157
Pingelly	26	87	127
York	26	133	136
Northam	24	159	109
Brookton	23	99	126
Nungarin	21	33	102
Cuballing	20	79	82

¹ The Central Agriculture Sustainable Rural Development (SRD) Region contains the shires listed in table 2.

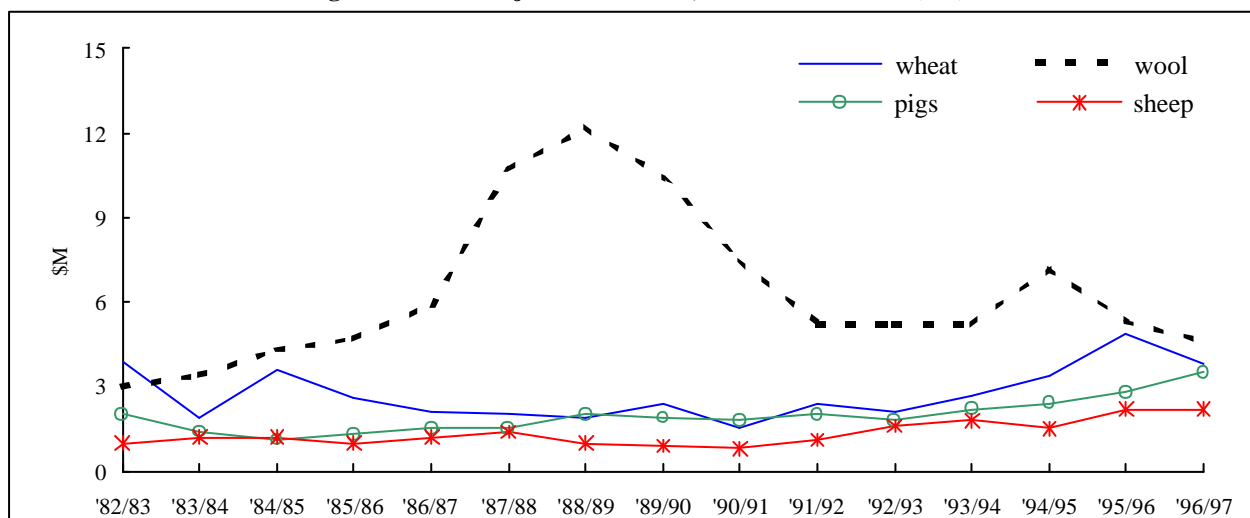
² The Australian Bureau of Statistics describes a farm as "an establishment which is engaged in agricultural activity, regardless of the unit's predominant activity."

Toodyay	17	106	91
Wandering	15	62	87

**Table 3: GVAP, area and dollars per hectare for major agricultural activities
Shire of Cuballing 1996/97**

Agricultural Industry	Value of farm production (\$'000)	Total area of production (Ha)	Dollars per hectare (\$/Ha)
Intensive animal products			
Apiculture	0	0	
Intensive meat	3,462	83.75	
Eggs	112	0.84	
Total intensive animal products	3,574	84.59	42,250
Pasture animal products			
Wool	4,552	21,250	
Milk	0	0	
Grazing meat	2,995	24,200	
Other	0	0	
Total pasture animal products	7,547	45,450	166
Crops - broadscale			
Cereal crops for grain	7,500	23,672	
Grain legumes and oilseeds	584	2,378	
Hay/pastures	486	850	
Total broadscale crops	8,571	26,900	319
Crops - horticulture			
Nurseries, turf and cut flowers	0	0	
Vegetables	0	0	
Fruit	0	0	
Grapes	0	0	
Total horticulture crops	0	0	0
Non productive land (ha)		9,303	
Total Shire of Cuballing		19,693	272

Fig 3: GVAP of major commodities, 1982/83 to 1996/97 (\$M)



Reference – Australian Bureau of Statistics (1997). *Agricultural Statistics*, Australian Bureau of Statistics, Perth, Western Australia.

© Chief Executive Officer of the Department of Agriculture, 2000

For further information contact Allan Johns, Regional **AGPLAN**ä Co-ordinator Tel (08) 9881 0222 or Fax (08) 9881 1950