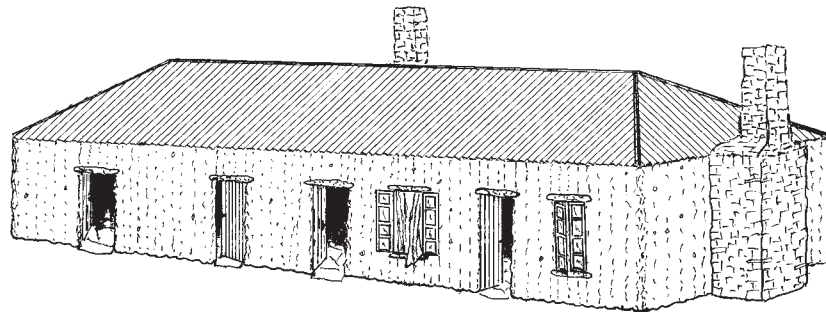


Martin's Eating House

Henry Martin's eating house was established before the township was surveyed in 1873. It was built with walls of vertical native pine logs dropped into a trench and held together with a plate along the top. Sawn pine rafters supported a galvanised iron roof and the flooring was of local irregular slate. The pine walls were pugged and whitewashed inside and out. After the township was surveyed, including the eating house within the plan, a stone stable was built behind it, right on the township boundary. Before the railway was built the eating house catered for teamsters en-route between Port Augusta and the Angepena gold fields, Bolla Bollana copper mines and the newly developed copper mine, Sliding Rock.

After the railway was built, the teamsters continued to deliver goods to outlying communities. From 1874 to 1897 it became Beltana's first licensed hotel, and a new stone building was built in front of the eating house. During the 1930s the eating house was in disrepair. It was purchased in 1939 by a local hawker Hassan Ali (Harry) Monsoor, who repaired the walls and re-roofed it with new corrugated iron. It became Harry's family home, the base store for the area he served as a hawker, and a general store with groceries, fruit and vegetables for the local community. It continued that way for the next 20 years. In the 1970s the building was the site for the Beltana Field Study Centre, operated by Ivan Hull and his family. It is now a private residence.



Sketch of Martin's Eating House

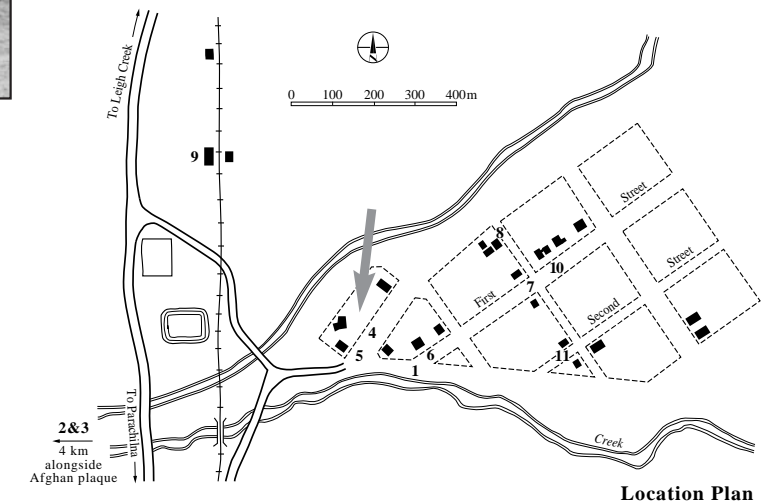
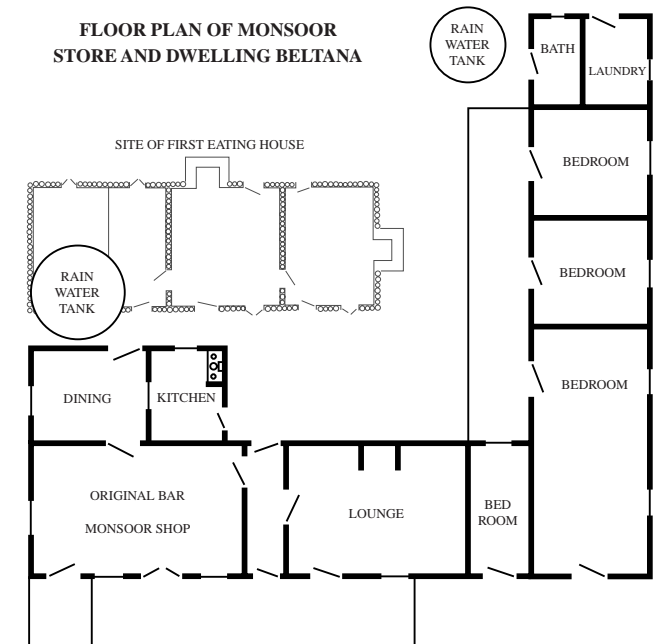


Stone building built at the front of the original Martin's Eating House

Monsoor delivery van



FLOOR PLAN OF MONSOOR STORE AND DWELLING BELTANA



Location Plan



The Beltana Sport & Social Progress Association
and the Beltana Memorial Committee
Supported by the Commonwealth



Heritage South Australia
Government of South Australia