

Making a splash with fashion at Paintworks



## In this month's issue

- 2 UWE triumph in Varsity boat race
- 3 Major redevelopment announced for Bristol School of Art, Media and Design
- 3 Chancellor recommended for non-party-political peerage
- 4 Fashion Show at Paintworks
- 5 UWE tackles food technology teacher shortage
- 7 Researchers launch new report on 'Binge Britain'
- 9 Visitors to UWE 'assured' of a warm welcome
- 10 Work travellers wanted for UWE transport project
- 14 Fairtrade status for UWE

The Bulletin is published by the Marketing and Communications Office who reserve the right to select items for inclusion and to edit copy. For further information contact Jane Kelly or Mary Price on ext 82208, e-mail [Jane.Kelly@uwe.ac.uk](mailto:Jane.Kelly@uwe.ac.uk) and [Mary.Price@uwe.ac.uk](mailto:Mary.Price@uwe.ac.uk).

Editor: Jane Kelly

Editor: Mary Price

Production: Jayne Andrews

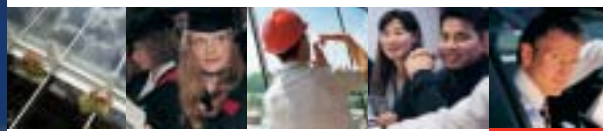
Designed by Graphic Design

Printing and Distribution by Printing and Stationery

The next issue will be circulated at the end of June. Copy date for this is 1 June. Please do keep sending contributions in. The Bulletin regrets that it cannot be held responsible for any claims that arise out of advertisements carried.

### Front cover:

Fiona Hayne (pictured bottom middle) with (clockwise) Maria-Elise Llagas, Steph Hall and Liz Hill



NEWS

## UWE triumph in Varsity boat race



UWE won the Varsity title for the fourth year in succession by beating the University of Bristol on Saturday 6 May in the 12th Annual Lloyd's TSB Varsity Boat Race by four races to one.

In a thrilling finish the men's seniors had to be re-run after both teams finished in a dead heat but UWEBC (UWE Boat Club) then went on to win.

The boats raced over a 1,300m course, through Bristol's Floating Docks, passing the SS Great Britain and Ampitheatre to finish at the Lloyd's TSB Building.

UWE won four of the five Varsity races including the women's and men's seniors.

At the start of the Varsity races the UWEBC men's novices lost to Bristol University Boat club (UBBC), but UWE's novice women won by several lengths. In the next race the men's alumni, boosted by the appearance of Peter Reed, ex UWEBC president and current world champion, won easily with their strongest performance to date.

UWE's senior women rowed brilliantly and achieved a convincing victory.

The men's senior race proved to be a nail-biting finish. A horn sounded amongst the spectators caused the UWE team to stop rowing before the line thinking they had finished. They quickly realised their mistake and crossed the finish line at the same time as UBBC resulting in a dead heat. This meant there had to be a re-row of the race.

After a tense wait the re-run race got underway and UWEBC rowed brilliantly, despite the added strain of the extra race, and crossed the line two lengths up, meaning UWEBC had won the Varsity series four races to one.

Since the event began in 1995 the University of Bristol Boat Club (UBBC) has won eight of the 12 races, UWE winning for the first time in 2003.

*UWE team celebrate victory (above) (Picture copyright Bristol Evening Post)*

*Pro Vice-Chancellor Julie Lydon is pictured at her leaving do in the Octagon on 16 March with Deputy Vice-Chancellor Rob Cuthbert (left) and Vice-Chancellor Sir Howard Newby. Julie, who joined UWE in 2002, was presented with a Bristol Blue Glass bowl and earrings, flowers, a Wallace and Gromit framed tile produced by the Bristol School of Art, Media and Design - and the UWE hoodie she had always wanted. In making the presentations Rob Cuthbert paid tribute to Julie's dedication, energy and academic leadership for major events such as the QAA Institutional Audit visit in 2004. Julie leaves the University to become Pro Vice-Chancellor at the University of Glamorgan.*



# Major redevelopment announced for Bristol School of Art, Media and Design

Planning has been granted for a phased ten year redevelopment of the Bristol School of Art, Media and Design at the Bower Ashton Campus. The £11.5million refurbishment and development programme has been agreed to enable the University to use the Bower Ashton Campus as a hub serving satellite sites at Spike Island, Bush House (above the Arnolfini), Watershed, the Tobacco Factory and from 2008 the studios alongside Royal West of England Academy at Queens Road .

Professor Paul Gough, Dean of the BSAMD, said, "This redevelopment plan is crucial to the future success of the Bristol School of Art, Media and Design. Our strong links and partnerships with all of the major design, art and media organisations in Bristol have lead to a phenomenal increase in student numbers (40% since 1997). Our recent agreement with Aardman Animations will attract budding animators to Bristol and we continue to strengthen our links with Watershed, Arnolfini, Spike Island and the Royal West of England Academy."

"Our strategy has been to create a strong hub and spoke; Bower Ashton as the hub, the 'spokes' will ensure that we maintain our partnerships with the very best creative industries and organisations in the city and region. Students can now work alongside professional designers, artists and media practitioners.



We need to ensure that we develop the core Campus Buildings to accommodate this demand and exceed students' expectations by providing first rate studios, exhibition space, and a stimulating learning space."

Pro Vice Chancellor Professor Colin Fudge is leading the development project. He said, "Students will enjoy greatly improved facilities including a new two storey studio building, a revamped art materials shop, expansion of student social areas including a new bar and canteen and expansion of the existing library.

"There will be new buildings for student resource centres for textiles, wood, metal and media work, improved facilities for research and knowledge transfer activities and many old studios will be replaced. The redevelopment also includes expansion of student support services including careers, student advice centre, student union offices, a new reception area and staff administration offices.

"The first phase of the redevelopment starts this summer with the construction of the new studio building. Designed to ease space pressures as the School is developed, this building will feature specially designed studios with north facing sky lights on the first floor. The ground floor will house the Electronic and Photographic Imaging Centre, the main reception and administrative offices."

Special attention will be focused on ensuring that the site blends well into its surroundings. Landscaping will include the replanting of a bluebell wood on the corner of Kennel Lodge Road and Park Farm Road.

Improved transport links will be established aimed at encouraging students to use low impact, energy efficient transport to the Campus. A bus turning circle will be installed making it easier to negotiate more bus services to the campus together with well lit shelters in waiting areas. Secure bike racks, lockers and improved showers and changing facilities will be provided for cyclists.

The new studio building is to be completed by Autumn 2007.

Sir Howard Newby, Vice-Chancellor, said, "The redevelopment of the Bristol School of Art, Media and Design is a major investment and will ensure that students gain the best possible experience and opportunities for knowledge transfer. The scope of the project gives us the potential to create a special place that will attract the best students and enable us to continue to develop and maintain our close links with the wider artistic community in the region."

*Artists' impressions of Bower Ashton Campus*

## Chancellor recommended for new non-party-political peerage

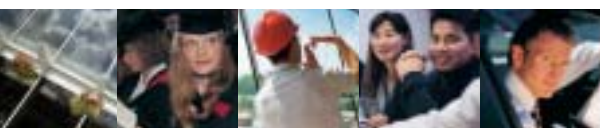


The University's Chancellor, Dame Elizabeth Butler-Sloss (left), has been recommended by the Appointments Commission of members of the House of Lords to be a non-party-political peer. Seven new non-party-political peer recommendations were announced earlier this month.

Dame Elizabeth was President of the Family Division of the High Court until 2005. Prior to this she sat on the Court of Appeal and was a High Court Judge in the Family Division. Dame Elizabeth was Chairman of the Commission for the Appointment of the Archbishop of Canterbury in 2002. She retired last year as Chairman of the Security Commission and is currently Chancellor of the University of the West of England.

Sir Howard Newby, Vice-Chancellor, said, "This is wonderful news, the whole University is delighted that Dame Elizabeth's outstanding contribution to public service and the legal profession has been recognised in this way."





## Fashion Show at Paintworks

Fashion and textiles students from the Bristol School of Art, Media and Design showed off their final year collections at two special shows at Paintworks on Saturday 20 May.

Fashion Programme Leader, Adrian Grandon, said, "All students produced some excellent work and the show was a real treat. At UWE we are building on the tradition that is now long established producing very individual students who are well received within the fashion industry. Last year one of UWE's students, Jesse Noy, won the largest cash prize ever awarded to any UK Fashion student at Graduate Fashion Week and she is currently touring South East Asia with the British Fashion Council. We hope to repeat this success story."

Samantha Whitty, third year BA(Hons) Fashion and Textiles Design, has designed a collection of lingerie inspired by pearls and the seashore. The lingerie comes in pale and dark oyster pearlescent colours and is decorated with swarovski pearls sourced from a Bristol bead seller based in Brislington and lace trims bought in Paris. Fabrics used include silk, crushed satin and stretch chiffon.

Sam has always been interested in designing lingerie but before coming to UWE did not have the pattern making skills. She said, "Designing lingerie requires the ability to cut very complicated patterns. It took me lots of practice to learn how to cut to the correct sizes and shapes from scratch. To help expand my understanding of the lingerie business I have worked at 'Fleur T', a lingerie company based in Redland in Bristol. This has given me a great insight into how being a successful designer means having a collection of skills including business, marketing, sales and accounting as an integral part of the mix – it takes more than a good design to make it in this competitive industry. Organising the student Fashion Show at Paintworks has also been a great learning experience for me."

Glyn Andrews, third year BA(Hons) Fashion, has designed a collection aimed at the more avant-garde end of the design market. His collection of women's clothing is styled for creative sophisticated women who like to experiment with their clothes. He came up with a very innovative pattern-cutting technique where he develops new garment shapes from spiral cut panels. Glyn describes his influences, "I was inspired by minimalism and wanted to move away from the accessorised clothing very much in vogue at the moment. The colour palette used is inspired from an exhibition of ice and snow installations called the Snow Show.

"My new pattern-making technique works in different ways depending on the fabric. Wool tends to take on a more rigid shape whereas chiffons and silks flow more organically." Glyn's collection uses a range of fabrics, varying from opaque to translucent, including wool, silk chiffon, silk satin and silk habotai, and experiments with the properties of the fabrics.

Fiona Hayne, third year BA(Hons) Fashion and Textiles, has made her collection almost entirely out of scrap finds and decorated garments. Her vibrant designs include bright pom-pom necklaces, sequined netting skirts, paint sprayed leather jackets with fine detail decoration in biro pens and jewellery using chains from Scrapstore, DIY stores and metal door letters. Fiona said, "For me the fun comes in creating clothing by combining scrap finds with second hand clothes and customising and reconstructing to produce something completely different. I like sequins and vibrant colours and my collection is inspired by Disco and Glam rock of the 1980s."

*(top left) Pictured are Fiona Hayne (seated left) with Maria-Elise Llagas and Liz Hill (top left) and Steph Hall*

*(bottom left) Design by Glyn Andrews*



# UWE tackles food technology teacher shortage

Food Technology teachers are in short supply nationally and in some areas of the UK the subject is not taught in schools as vacancies are impossible to fill. In East Sussex the subject has been wiped from the curriculum because schools and colleges have failed to attract any teachers at all.

UWE has teamed up with Uckfield Community Technology College to create an innovative training scheme that aims to reverse this worrying trend.

Programme director, Sally Bassett from UWE, is working with colleagues at Uckfield to develop a distance learning PGCE in training Food Technology teachers that utilises the expertise of teacher trainers in Bristol but gives opportunity to those who want to remain in East Sussex during their training period. Flexibility to carry out postgraduate teaching practice in schools that will be clamouring to employ them is offered as an integral part of the course.

Sally Bassett explains, "This innovative teaching programme is an excellent example of what UWE does best, transferring knowledge and expertise in a way that has a positive and important impact. It is exemplified here by the way that we are helping to inject a positive turnaround in an important curriculum area in East Sussex.

"The PGCE course runs for 36 weeks of which 24 weeks are spent training 'on the job' via work experience in schools. The remainder of the course work is delivered by experienced teachers at Uckfield and through distance learning via the web and video conferencing hosted at Uckfield. UWE has had enormous success in recruiting teachers to train on Design and Technology programmes at the Faculty of Education in Bristol. When I met with Craig Pamphilon, the headteacher at Uckfield, we discussed the possibility of utilising UWE's success to help to rebuild the potential for this important subject area to return to the curriculum in East Sussex.

"Food Technology is a subject that all students enjoy; it mixes in other subjects like science and Maths in a fun way that is meaningful to children because the results usually taste good. Producing tasty food is however just one aspect of the subject,

Food Technology also teaches children how to identify a healthy diet that is nutritionally sound, to choose quality ingredients that are seasonal, to explore the cooking of other countries and cultures and to understand the commercial production of food. Every child should be able to prepare a tasty, nutritious meal using a range of skills learnt in Food Technology.

"So far interest in the course has been very encouraging and we hope to fill the programme that starts in September 2006. Sally continues, "We hope that by starting in a small way we can grow into a programme that will put an end to the shortage of Food Technology teachers."

## Student profile

### Kirstyn Coggins (31)



Kirstyn Coggins is in her final term training to be a Food Technology teacher at UWE. She has already secured her first job at Gordano School in Portishead for September 2006. Kirsty worked as a food technologist for ten years before deciding to train as a teacher. She said, "After 10 years I was looking for a change and I felt that teaching would be the perfect next move. The

course developed my confidence in the classroom and I've enjoyed meeting new people and sharing the experience with them. It was especially rewarding to watch pupils surprise themselves with their own abilities – in food practical sessions some pupils start out a little bit negative and then taste what they have made and are really pleased.

## Postie to Pastor



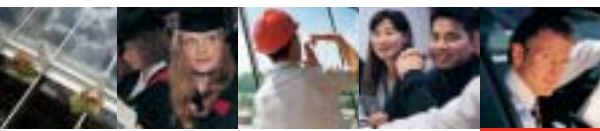
For one night only Paul Bircham, UWE postman, is fulfilling a lifetime ambition and is leading the Evening Church Service at Hanham Baptist Church. The church is on the High Street in Hanham and Paul will be leading the service on Sunday 11 June at 18.00. The theme of the service will be 'Faith, Jesus, others and me'.

All welcome.



Professor Paul Gough held an exhibition during May with fellow artist Professor Jeremy Diggle from the University of Plymouth entitled 'Remembering' at New Zealand House in the Haymarket London. The photo shows Paul hanging work for the exhibition.





## Student wins national essay competition

Ed Flett, a third year student from the Faculty of Humanities, Languages and Social Science has won a prestigious literary prize for an essay on American writer Paul Auster. The Ambassadors Award was presented to him by the British Association for American Studies at the University of Kent at Canterbury.

Ed Flett's winning essay is entitled, 'Transparency in the New York Trilogy – Paul Auster and the inescapable paradox'. Ed explained, "My essay concentrates on the shifting perception of the city of New York and the ephemeral nature of city life. Paul Auster's work gives a great insight into New York and American national identity, in the 1980s and beyond. The New York Trilogy is a philosophical novel that looks back to the American literary tradition of transcendentalists such as Thoreau and Hawthorne."

Speaking about the impact the prize has had, Ed said, "As a mature student who went back into full time education at the age of 27 after a fairly long break this prize is a real validation of my writing skills and development of my writing over the past three years. I did enter an essay for this competition last year that received a commendation and this spurred me on to send in another entry this year. I also feel that the prize is a great testament to the quality of teaching by the lecturers at UWE and I feel that the award is a great reflection on the English Department."

Dr Sarah Robertson, lecturer in American literature at UWE encouraged Ed to re-enter the competition this year, she said, "Everyone in the School of English is delighted at Ed's success. He beat off competition from many of the Russell group universities and is a credit to the department."

Peter Rawlings, Head of English and Drama at UWE, said, "We are thrilled at this tremendous result for Ed. It is the first time that a student from UWE has won this award. Ed plans to continue his studies at the University of Edinburgh where he hopes to win funding to study for an MA Writing and Cultural Politics. We wish him all the best."

## World's first Distributed Analog Supercomputer prototype to be built at UWE

Professor Jonathan Mills of Indiana University (USA), one of the world's leading experts in analog computers, is to work at the Faculty of Computing, Engineering and Mathematics (CEMS), to develop and build the world's first prototype of a Distributed Analog Supercomputer. The work will be carried out during Professor Mills, nine month Leverhulme Trust Visiting Professorship at UWE.

UWE, which is a centre of unconventional computing (a joint venture established at CEMS and the Faculty of Applied Sciences), is hosting Professor Mills' visit.

Professor Jonathan W Mills has investigated the design and application of the extended analog computer, which was first described theoretically by the late Professor Lee Rubel in 1993. Rubel, a mathematician, believed that his theoretical machine was too general to be constructed, perhaps too general even to be considered as a computer. However, using innovative techniques and materials, Professor Mills, his students and staff at Indiana University have built a series of these machines, and developed applications and interfaces to explore this non-digital approach to computing.

Analog computers in the 1950s and 1960s were cumbersome, complex and difficult to use. The new extended analog computers are small, simple and can be applied by reflecting on a problem until a match—an analogy—is found between it and the computer. Configuring these machines is physically simple, rather like drawing a diagram on the back of an envelope or creating a web page, and is far less complex than writing a digital computer program.

These new computers also have the potential to solve trillions of partial differential equations per second, a speed that is orders of magnitude faster than even the most advanced digital supercomputers today. The research funded by the Leverhulme Trust will duplicate prototypes that have been fabricated with plastic and chemical 'wetware,' which are powerful and easily built, although they are much slower than silicon chips.

Professor Mills says, "I find it difficult to believe that the opportunity to be the first at anything would come my way! But it is true: UWE and the Leverhulme Trust have generously given us the chance to build the world's first EAC supercomputer prototype in the UK. This project is considered risky in the USA. It does not currently follow conventional directions in computing. Yet ignoring 'blue sky' research allowed the Russians to put the first satellite in orbit, and let the Japanese implement W Edward Deming's statistical process control in their automotive industry. Our local economies still suffer from the loss of jobs and business. Europe is much more forward-thinking. Collaborating on this advanced research project at UWE is exciting!"

Professor Adamatzky (Unconventional Computing Group, CEMS) says, "We are delighted to be working with Professor Jonathan Mills and excited about working on this new prototype. It links closely to the work we have been



doing on 'wet brains' and we will all benefit from working together on this innovative project."

Professor Mills will join UWE in January 2007 for nine months.

*Professor Mills in front of his polymer computer*

# Researchers launch new report on 'Binge Britain'

Researchers from UWE launched a new report entitled, *Binge Britain: Alcohol and the national response*, at a press conference in London on Thursday 18 May.

This press conference marked the publication by Oxford University Press of a major critique of Britain's drinking habits, its escalating alcohol problems and its alcohol control policies. This event gave journalists the opportunity to hear a succinct overview of this review by the authors, Professors Moira Plant and Martin Plant (HSC). The press conference was chaired by Judy Orme, Director of the Centre for Public Health Research.

Alcohol has played a major part in British life for centuries. It has led to the rise and fall of governments, financed wars, provoked civil disorder and even acts of terrorism. In many countries, alcohol consumption has been decreasing in recent years, but in Britain we are drinking more and more, and from an earlier age. With the relaxation of licensing hours, there is real concern that the current epidemic of binge drinking will get even worse. So why has this problem not arisen in most of continental Europe? Why are British adolescents drinking more now than ever?



What will be the effect of the relaxation of licensing hours? Why have so many city centres become no-go zones, filled with social unrest and violence? Is it just that we can't hold our drink - or that we don't know when to stop?

The authors of this book are two of the leading authorities on alcohol and its problems. In this highly topical book, the first ever on binge drinking, they take a look at the UK and its alcohol problem. They review the role of alcohol in Britain in the past 1,500 years. *Binge Britain* considers why our drinking culture is maintained and why politicians seem reluctant to act effectively to reduce the problem. The authors examine the power of the beverage alcohol industry and the huge amount of money that it contributes in taxes. The book provides an informed and highly critical overview of recent developments in alcohol consumption and alcohol-related problems, together with a commentary on and critique of the development of recent policy and the national response to this policy. Informative, authoritative and accessibly written, *Binge Britain* provides a fascinating look at our need for intoxication.

## UWE attracts leading figure to employer and innovation role



UWE has appointed Professor Stephen Hagen (left) as Director of the Centre for Research Innovation and Graduate Studies.

Professor Hagen is currently Director of the Mercia Institute of Enterprise at the University of Warwick. Mercia Institute of Enterprise is the Science Enterprise Centre for the West Midlands specialising in enterprise creation, technology transfer and enterprise education.

Professor Hagen has extensive leadership experience in the field of university links with business, entrepreneurship and innovation in universities. He also has experience of working in business both as a director of Warwick's four successful trading companies, as well as founding two start-up businesses himself. In addition Professor Hagen is an expert in the role of foreign languages in business, having published a number of studies in this field and acting as a government adviser to DTI, TPUK and UKTI for the National Languages for Export Campaign (1993-2004).

Professor Hagen's appointment is welcomed by Deputy Vice-Chancellor John Rushforth, "UWE's links with employers are hugely important to the delivery of our mission. The University

already has a well developed network of links with business and the community of the West of England. Professor Hagen's extensive experience as one of the country's leading enterprise practitioners will help us to further enhance this area. We are delighted that Stephen Hagen has accepted this key post."

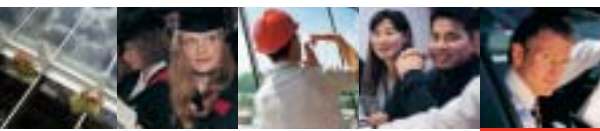
The Centre for Research Innovation and Graduate Studies (CRIGS) provides support for UWE's knowledge transfer activities ranging from student placements to blue skies research.

Professor Hagen, who will take up his post in September, was born in Bristol and lived with his family in Filton Avenue before moving to Birmingham when still a child.

Professor Hagen, says "I am delighted to be taking up this exciting post at UWE, where there is tremendous potential for building on UWE's already successful links with business. I firmly believe that when universities work closely with business and the community there is a massive boost to the local and regional economy.

"UWE has a strong record in developing professional degree programmes with an emphasis on business and community needs and I plan to build on this tradition and expand on UWE's existing success in Knowledge Transfer activities in close partnership with local and regional business and public sector organisations. I would like to see UWE providing a wide range of on-demand services to business and the community in Bristol and the South West and to be the first point of contact whenever specialist knowledge or higher skills are needed in the workplace. I am particularly happy to be returning to Bristol, my birthplace."

Professor Hagen's full biography can be seen at: <http://www.mercia institute.com/miedirector/>



## Boys feel pressure too

A new study from the Centre for Appearance Research (FAS) says teenage boys are at risk of developing body dissatisfaction and eating disorders as a result of perceived peer pressure and media images – the key factors known to affect adolescent girls. Perceived pressure from peers and the media has long been seen as one of the key risk factors in the development of body dissatisfaction and eating dysfunction amongst adolescent girls. However this new research has now found that this is also a major risk factor amongst teenage boys.

The study, which was carried out by Emma Halliwell (FAS) and Martin Harvey from the University of Sussex, was published in May in the British Journal of Health Psychology.

Involving 507 adolescents aged 11-16 years, the research assessed perceived pressure from parents, siblings, friends and the media to be thin, internalisation, peer comparison, body satisfaction, eating behaviour, and perceived weight.

While substantial gender differences were found, for both boys and girls perceived pressure to lose weight was associated with eating behaviours through social comparison, internalisation, and body dissatisfaction. Perceived weight, rather than self-reports of actual weight, was also found to be a vulnerability factor.

Previous research has found that while most young women aim to look better than their peers, young men do not want to stand out as looking different. In line with this, the study found that it was only among boys who perceived themselves as overweight that social comparisons were significantly associated with body dissatisfaction.

Dr Halliwell said, "The consequences of social comparisons, particularly for boys, depend on one's perceived weight. Understanding appearance goals and the way social comparisons serve these goals could be used to decrease the impact of social comparisons on vulnerable adolescents, for example, by suggesting appropriate comparison targets to protect against body dissatisfaction."



She continued, "As these attitudes and behaviours are already developed by early adolescence, prevention programmes should be targeted at pre-adolescents, before internalisation and body-image concerns become established."

Emma Halliwell

## 'Wet brain' project wins 'Brunel of the future' contest

UWE research students have been named the Brunel figures of the 21st century with their work on robotics and artificial intelligence. Students Matt Studley and Adam Budd from UWE were thrilled to win the contest with the Universities of Bath and Bristol to find the 'Brunel of the future'.

The result was revealed in an ITV West programme shown on 20 April to mark the 200th anniversary of the birth of Brunel. The judges - James Dyson, Gordon Masterton, President of the Institution of Civil Engineers – decided that of the three projects submitted, UWE's 'wet-brain' project was the most exciting and symbolised the vision and spirit of innovation that Brunel would have shown if he had been alive today.

The winners received a cash prize of £5,000 donated by ITV West and the South West Regional Development Agency.

Dean of the Faculty of Computing, Engineering and Mathematical Sciences Dr John Vinney congratulated all involved, saying, "This is a fantastic achievement and one that clearly demonstrates that our students really are the best in the west of England!"

The winning team was from the Faculty of Computing, Engineering and Mathematical Sciences and the Faculty of Applied Sciences. It consisted of students Matt Studley and Adam Budd, with supervisors Professor Larry Bull and Dr Ben de Lacy Costello. The research is part of a wider project involving Professor Andrew Adamatzky.

Matt said, "New approaches to robotics have many possible applications and could revolutionise the way repetitive or dangerous tasks – such as mine clearing or pollution control - are carried out."

Adam continued, "This award reflects the fact that future advances in engineering will draw on skills from a wide range of disciplines, from advanced mathematics to an understanding of how the human brain carries out multiple and parallel tasks."

Brunel 200 is an initiative from Business West and Bristol City Council to celebrate the 200th anniversary of the birth of the engineer and innovator. Further information can be found at [www.brunel200.com](http://www.brunel200.com)

*Adam Budd and Matt Studley receive their Brunel of the Future award from ITV's Lisa Aziz*





## Visitors to UWE assured of a warm welcome

Visitors to UWE can be assured of a warm and helpful welcome through a prestigious new award achieved by Reception staff at the University.

UWE is the first university in the West Country to achieve Hospitality Assured – the internationally recognised industry-specific standard for delivering service and business excellence in the hospitality industry. It is also one of only twelve universities in the UK to have gained the prestigious accreditation.

The Main Reception has received recognition for its high standard of customer service and quality management through the Hospitality Assured accreditation which was undertaken by a team of independent assessors, led by the Hotel & Catering International Management (HCIMA) – the professional body for hospitality industry managers worldwide.

The award was presented by Linda Martin, the HCIMA's Director of Programmes responsible for Hospitality Assured, to Gina Taylor, Reception Manager at a special ceremony at the university on Tuesday, 16 May.

Linda Martin said: "I am delighted that the University of the West of England is leading the way by being the only university in the region to be currently accredited with the Hospitality Assured standard, and only the twelfth in the UK. It is a fine achievement and I hope many more universities will follow suit in the coming months. The Main Reception team is to be congratulated on adopting a sound approach to service and business excellence, demonstrating a keenness to learn and continually improve; and I am particularly pleased that UWE wants to use the accreditation of the Main Reception as the starting point for further Hospitality Assured assessments, involving a number of the University's other key hospitality operations."

Reception staff have been working towards the award since last year, and they have implemented all ten steps of the Hospitality Assured award through a Quality Management

System (QMS) across the three main areas of work: reception, information and events.

Chris Abbott, Head of House Services, said, "We are absolutely delighted with this award, and we are looking forward to ensuring that we provide the best quality service for all visitors to the University. UWE is a large and complex institution, and our reception staff play a vital role in helping visitors to feel welcome and to be well informed throughout their visit to the University. We are now aiming to roll this system out across other areas of the University to ensure that we achieve the same high standards across the board."

The new QMS system was introduced last summer in the busy pre-clearing period and the Hospitality Assured accreditation was achieved in February 2006. The importance of training has also been recognised through the establishment of a pool of trained staff that can be called on to provide cover at busy times or for holiday/sickness relief.



*The Hospitality Assured Award was presented on 16 May. Pictured at the ceremony are (l to r) - back row - Chris Abbott (Head of House Services) and John Rushforth (Deputy Vice-Chancellor) and front row - receptionists Sam Norcliffe, Rob Stroud, Emma Prowse, Reception Manager Gina Taylor and Linda Martin of the HCIMA.*

## UWE and Knowle West Media Centre win research bid

The Bristol School of Art, Media and Design (BSAMD) and Knowle West Media Centre are celebrating success in winning Arts and Humanities Research Council (AHRC) funding for a collaborative three-year PhD research post to extend research into the impact and potential of community-based media.

The PhD will commence in October 2006 and is funded through a new AHRC scheme which encourages innovative collaborations between HEIs and media and arts organisations. This formal collaboration builds on longstanding informal links between UWE and Knowle West Media Centre, and gives both organisations the opportunity to extend their research interests in this area.

The research post will explore how young people interact with and subvert technology for their own uses, and will investigate new ways in which young people may engage with technology in the future.

Barbara Hawkins, Head of Graduate School at BSAMD, said, "Bristol School of Art, Media and Design has long been a supporter of the aims of community media and arts organisations in the region, and we are delighted that our commitment to widening participation has been recognised by the research council in supporting this doctoral study. This project is a unique

form of collaboration between community-based work and academic study, and we are excited by the potential outcomes."

Carolyn Hassan, Director of Knowle West Media Centre said "KWMC are delighted with this success – we know that the work we do with young people and the community is important, and are committed to sharing our experience and to learning. This research post will enable us to really explore the ways in which young people use technology and to contribute to debate at a national level. We are looking forward to working with UWE in a more formal capacity and I am sure this will be a very productive partnership for all concerned."

The fully funded AHRC PhD studentship will be advertised nationally and the researcher who takes up the post will contribute to the already established research strength in community media that currently exists in BSAMD, as well as contributing to the wider community across Bristol and in Knowle West.

For further details of the PhD post e-mail [anne.conoley@uwe.ac.uk](mailto:anne.conoley@uwe.ac.uk) or see [www.uwe.ac.uk/amd](http://www.uwe.ac.uk/amd). For further info about KWMC and links to sites about community media go to [www.kwmc.co.uk](http://www.kwmc.co.uk)



## Work travellers wanted for FBE transport project

Do you sometimes have to make journeys (by car, train etc) as part of your working week? How do you use the time? Do you catch up on e-mails and paperwork, fix up meetings, revise work, talk to friends or colleagues on the phone or do you use the time as precious thinking or preparation space away from other commitments? Or perhaps you find the travel time itself a waste of time?

A researcher from the FBE is looking for people to participate in a project that examines how business travel time is spent. David Holley wants to find out more about what people do when they travel and how the travelling time relates to the working day.

David said, "I need people who travel occasionally or regularly as part of their job. This includes any work related travel apart from the commute to or from a fixed workplace. This could be for a business meeting, attending a conference, seeing a client or visiting satellite sites or retail outlets. I am looking for people from a wide range of professions to explain how they use their travelling time. All I ask is that they have a fixed place of work and can potentially do at least part of their job away from that location, say at home.

"Whatever your experience I want to talk to you about how you use the time spent travelling to your different work destinations. I want to talk to people who travel by air, train, bus, car, bicycle or foot to identify how different modes of transport effect productivity during travel time.

"You need to commit to two interviews between which you will record your time use in a diary for two days. It should be an interesting and self-reflective experience! You will also be contributing to an important study that could impact on the UK Transport system including how decisions are made for new road and rail projects and how vehicles are designed.

"The research findings will be very useful as they will help better understand the roles business travel time plays within the wider context of an individual's day-to-day working life. Many assumptions are made to suggest that travel time is wasted time and I want to find out more to test the validity of such assumptions. Transport schemes often gear up to reduce journey time, particularly in business travel as the travel time can be seen to be unproductive. But technological advance means that many people can use time productively and that the changing roles workers play could point to recognition that travel time should not be considered wasteful."

Please contact David Holley on 0117 32 83799  
E-mail David2.Holley@uwe.ac.uk.

## Foundation Summer Show 2006

Foundation Studies students showed their work at a special exhibition held at the Bower Ashton Campus from Friday 12 May to Tuesday 16 May.

The students who are completing their Foundation Studies Diplomas in Art and Design and Media, showed a wide range of work in a number of disciplines including animation, fashion and textiles, fine art, graphic design, illustration, interactive and multi-media, moving image, photomedia, sculpture and 3D design as well as sound pieces.

Head of Foundation Programmes, Sam Thomson said, "There is always a very lively and creative mix of work on show from foundation students. Throughout the programme students are identifying the areas in which they want to specialise and this often makes their work experimental and innovative. The tradition of the Foundation year in which post A-level students spend a year studying a broad range of art disciplines before applying to study at degree level is an excellent way of preparing them for higher level study in their chosen field, and enabling them to make informed decisions about progression into undergraduate study."

Amongst this year's students is Luke Pomeroy, a Fine Art Foundation student, from Fishponds in Bristol, who has created an installation called 'The Obsession of Collection' which looks at the notion of 'collections' and how they are put together by focusing on the natural history collection of Sir John Henry Greville Smyth (of Ashton Court).

Luke says, "Sir Greville Smyth was a natural history collector and self-made taxidermist whose extensive collection was donated to Bristol City Museum after his death. The collection suffered in the blitz and the remains are now largely uncatalogued by modern day standards, with much of it integrated into the museum's natural history collection. The collection is now held in the Bristol City museum basement, where it sits in darkness within long glistening cabinets.

"I am very interested in the concept of the collection, and also of the private and selective nature in which some collections are shown. My piece consists of an installation in a room with natural history ephemera scattered on a pedestal desk, my research covers the walls and a slide projector shows the rooms inside the mansion where the collection was stored, in the 60s when it was derelict, during restoration and the current day. There are two black and white television screens, one showing the Greville Smyth collection being revealed in the museum basement, the other a frantic flicking of research catalogues, filmed within the Bristol records office. A figure sitting at the desk, who is revealed to be Sir Henry Greville Smyth guides you through the processes of collection and the history behind the collection via a reel to reel tape player."

Emily Sivyer, a Media Studies Foundation student from Bridgwater in Somerset, gave an ultra-modern treatment to Shakespeare's *The Tempest*. Working with sound and moving image Emily created an installation with three screens where a short film she created of a storm is played out with the words of Prospero, and later of Miranda being heard along with images from the film, *The Perfect Storm*.



Emily says, "In the beginning of my piece there is a calm sky with clouds passing, but as the storm gathers on one screen, we see Prospero controlling the storm with his breath on another screen. As the storm abates we hear the words of Miranda, "Oh Brave new world that has such people in it." The final part of my piece, which is a growing crescendo of sound, ironically contrasts the calm of the island and the innocence of Miranda's words, with the conflict and struggle of society and poses the question, Which should we fear more - to be banished from society or society itself?"

Work by Tilly McKerrow, one of last year's Foundation students



# Successful launch of 'Identity and the City: 1001 years of ethnic minorities in Bristol'

It was standing room only at the Watershed on 21 March when over 130 people came to the launch of UWE's new Lottery-funded History Project, 'England's Past for Everyone' (EPE).

Tony Benn held the audience spellbound with his witty and impassioned talk: 'Learning to Live Together', the keynote speech of the launch. Proceedings were opened by UWE Vice-Chancellor, Sir Howard Newby, who spoke of the need to open up the University to new constituencies and to make sure the University shared its knowledge with the wider community.

Professor Geoff Channon (Dean, HLSS), explained how UWE won a grant of £120,000 in June 2005 for the two year project which is part of a £3.5 million national initiative called 'England's Past for Everyone'. Co-ordinated by the Institute of Historical Research's Victoria County History Project, EPE spans 14 different history projects across the nation. Bristol's project, as the only one to focus on ethnicity, is particularly innovative.

The project's leaders, historians Madge Dresser and Dr Peter Fleming (both HLSS), outlined the proposed content of the book (due out at the end of 2007) and the website which was officially launched that evening. Bristol's long pedigree as a port and a city means, they

said, that historians can chart how ethnic diversity has enriched and challenged the city over 1001 years, up to the watershed year of 2001 when 9/11 dramatically redrew global relations and urgently brought home the need for historically well-informed debate on ethnic diversity and civic identity.

1001 years also recalled the feat of Scheherazade whose story-telling powers confirmed the importance of engaging one's audience. The aim of the historians on this project will be to marry academic rigour and archival research with local expertise. To this end, a wide range of volunteer researchers and interviewees will work with professional historians on both the book and the website.

Kate Brindley, the new director of Bristol's Museums, Galleries and Archives Service, outlined how UWE historians, and city archivists, curators and librarians as well as film-makers at the Watershed were co-operating together on a number of related projects, including the Black Archive Partnership, Digital Stories, and the proposed new Museum of Bristol to look anew at the city's history. More information is available at

[www.EnglandsPastForEveryone.org.uk/Bristol](http://www.EnglandsPastForEveryone.org.uk/Bristol)

*Tony Benn gives the keynote speech (above)*



## UWE wins top social science award for hospital project

The Economic and Social Research Council's award for a Knowledge Transfer Partnership with the best social science application was presented to UWE by Alan Johnson, former Secretary of State for Trade and Industry (now Secretary of State for Education). The award for the KTP, between the Faculty of the Built Environment and North Bristol NHS Trust, was presented at a ceremony at the Savoy Hotel to celebrate the 30th anniversary of the partnership scheme. For more information on KTPs, contact [clare.rowson@uwe.ac.uk](mailto:clare.rowson@uwe.ac.uk)

*The picture shows, from left: Professor Bob Grimshaw, FBE; David Guy, ESRC; Joscelin Miles, KTP Associate; Ian Harrison, Department of Trade and Industry; Clare Rowson, KTP Office Manager, Centre for Research, Innovation and Graduate Studies; and David Tappin, North Bristol NHS Trust*



## Primary Languages conference

HLSS recently hosted the first Primary Languages conference to be held in Bristol. The conference was organised jointly by Comenius South West, based in HLSS, and the Bristol Early Language Learning Regional Support Group, based in the University of Bristol and was attended by 120 primary teachers and trainees.

Irene Wilkie, Comenius SW Regional Manager, gave an overview of the progress of the primary languages agenda from the publication of the National Languages Strategy in 2002, to the current situation in which approximately 70% of primary schools are now engaged in some form of foreign language teaching. The keynote speech was delivered by Therese Comfort, a primary language adviser from CILT, the National Centre for Languages, who outlined the recently published framework for primary

languages. Participants then enjoyed a varied programme of workshops from ideas for making language learning fun, such as French through football, parachute games and Spanish songs to pedagogical issues such as integrating languages across the primary curriculum, using ICT, and managing the transition from primary to secondary.

By 2010, all primary school children must have the opportunity to learn a foreign language in curriculum time, not just as an after school club or a lunchtime extra activity. This presents a major challenge for many schools, but the participants in the conference were certainly embracing it enthusiastically and said they would be returning to their schools 'buzzing with new ideas'.



# Knowledge Exchange with the Middle East

## What is a university for?

The Centre for Critical Theory held a well attended conference on 25 April which posed the question: 'What is a University for?'

There has never been a better time to re-examine the role of 'The University'. With the arrival in February of Sir Howard Newby as Vice-Chancellor, the introduction of additional tuition fees, and the changing expectations of students, a realignment of UWE seems inevitable.

In his introduction, Simon Thompson, Director of the CCT, encouraged participants to think in the broadest terms about the role of Higher Education in the UK today. There was certainly no shortage of ideas. The series of workshops included talks and lively debate on 'The formation of social capital', 'Education for citizenship', and 'A repository of memory'. There followed sessions in 'Knowledge transfer', 'Training for employment', 'A community of scholars', 'The production of new knowledge', and 'Knowledge exchange'. A session entitled 'What is UWE for?' looked at the University's middle ground position where the practical meets the intellectual. In a world with few certainties and a changing educational context, UWE must stay on its toes.

Dominant themes that emerged in the discussions were the University's engagement with the community, the transferable skills students gain at UWE, the values of the Polytechnics (do they live on?), the ways in which 'knowledge' is learned, used, exchanged and transferred, and the success of UWE graduates in the workplace. (After three and a half years in work, 80% of UWE graduates say that they are broadly satisfied with their job.)

Attempting to sum up the day, Simon Thompson sensed a collective determination by the participants not merely to be the slaves of 'external drivers', but to play an active part in re-thinking what UWE is for. The conference left the delegates with plenty to think about.



Professor Ron Ritchie, (Dean, EDU, pictured left) led a British Council seminar using video conference facilities with policy makers and school leaders from seven countries in the Middle East (Bahrain, Saudi Arabia, Kuwait, Yemen, Qatar, UAE and Oman) in March.

The seminar was the last of six in the 'Oxford Leadership Series' which began in September 2005, in which education leaders delivered a keynote lecture in Oxford. Each lecture was recorded onto DVD and sent to each of the countries with a paper and questions for discussion.

Ron Ritchie's contribution focused on distributed leadership and the role of middle leaders in schools. It was based on his recent research funded by the NCSL in which case studies of schools with distributed leadership were collected from seven local authorities in the west of England. Ron said, "This was a fascinating and educative process for all involved, but I especially found it a valuable experience to be able to interact with colleagues in other countries and cultures on such a fundamental topic, without leaving the office!"

The seminar was organised by the British Council and funded through a Regional Organisation of Gulf States.

## Public Health research in the spotlight

Public Health research at UWE was celebrated at a special event entitled 'Healthy Communities' at the Frenchay Campus on 26 April 2006 which attracted over 130 delegates from a wide range of agencies and organisations. The event concentrated on how public health relates to the sustainability agenda and speakers from three Faculties explored a range of dilemmas in public health with regional and national colleagues.

Speakers included Professor David Hunter, chair of the UK Public Health Association and Professor Gabriel Scally, South West Regional Director of Public Health.

The event showcased the increasing range of public health research undertaken by academics at UWE in the Faculties of Health and Social Care, Applied Sciences and the Built Environment. Judy Orme, Reader in Public Health (HSC), said, "This event brings together academics from different parts of the university whose work areas embrace a common theme. We all work to improve our communities in different ways and this 'Healthy Communities' event worked towards expanding awareness of the extent and breadth of expertise across the three Faculties."

Those attending came from a range of agencies and organisations including the Environment Agency, Health Protection Agency, Sustainable Development Commission, Sustainability South West, Government Office South West, The Welsh Assembly, Strategic Health Authorities, Primary Care Trusts, Local Authorities, private regeneration and landscape companies, countryside and wildlife organisations and community groups.

UWE academics including Professor Marilyn Taylor, Professor Jim Longhurst and Professor Elizabeth Towner shed light on projects currently taking place in the public health arena in subjects including health, governance and neighbourhoods, regeneration, urban planning, community participation, environmental health, arts and health, workplace health, children and young people including childhood accidental injury.



The conference organising committee from left to right Jane Powell (HSC), Judy Orme (HSC), Marcus Grant (FBE), Selena Gray (HSC), Melanie Grey (FAS), Joanne Bailey (UWE Conference Office) and Emma Griffin (HSC)



# UWE encourages enterprise among students

Student teams have swept the board in this year's Business Plan Competition, run by UWE. Students Emily Gray and David Wilson (FBE) won the open prize against tough opposition with a bright new business idea called ActiveBuddy.co.uk. The new website aims at linking individuals who enjoy sport with others in the same area who are of similar sporting ability.

Emily said: "Our business will tap into the growing fitness and introduction markets. It has a great potential to generate revenue from subscriptions, advertising and links with clubs, venues and sports equipment specialists."

There are three prizes in the Business Plan Competition, worth a total of £19,500, and the runner-up award and the special prize for social enterprise were also won by teams containing students. As well as cash prizes, the winners receive a rent-free place in UWE's city-centre business incubator for a year to help them on their way to business success.

The social enterprise award was won by the Student Community Portal System, which offers an integrated online service linking all counselling available to students, such as career development, scholarships, chaplaincy, and health advice. The judges were impressed by the professional and passionate presentation of the idea, developed by Patrick Dasoberi, Christopher Torkornoo and Joseph Agamah (CEMS).

The student prize was won by Buckhill Ltd with their idea for Business to Web, an innovative, easy-to-use system combining web management software with a customer relations management database, suitable for the small or medium enterprise. Student

Stuart Buckell from UWE's Bristol Business School teamed up with his father Steve for this winning plan.

The sponsors of the competition are Business West, Bristol City Council, Haseltine Lake, Osborne Clarke, Royal Bank of Scotland and UWE. The keynote speaker at the award ceremony was James Murray-Wells, a former UWE student whose online business [www.glassesdirect.co.uk](http://www.glassesdirect.co.uk) is challenging the domination of chains of high-street opticians.



*Pictured back row from left to right are Stuart Buckell; David Wilson; James Murray-Wells and John Rushforth (Deputy Vice-Chancellor). Front row Emily Gray, Patrick Dasoberi and Anna Keeling*

## UWE collaborates on Europe-wide animation project

The Bristol School of Animation (BSAMD) and the Faculty of Education are collaborating on a European wide initiative to develop an animation programme as a teaching tool for use by teachers in schools.

As a partner in the Leonard da Vinci Community Vocational Training Action Programme, the Bristol School of Animation has received funding to work with The Animation Workshop at CVU Midt-Vest (Denmark), L'Equipée (France), 9 Zeros Catalunya (Spain) and the Kinobuss Project (Estonia) on the 'Teaching in Animation' project.

In a world where children are exposed to animation on a daily basis through television, the internet, mobile phones, and cartoons, research by experts in partner institutions suggests that computer animation is a suitable learning instrument for children across all subject areas in the classroom. In addition, the technique has been shown to be a suitable learning method to integrate pupils who are not traditional learners or those who experience learning difficulties in traditional classroom situations.



The aim of the project is to transfer knowledge throughout the European partnership, about how animation can be used as an innovative learning methodology within the classroom, and to develop a user-friendly self-instructive training programme accessible to all teachers. The Bristol School of Animation will be directly involved in the analysis and evaluation of the results, and will have a central role in writing up the final programme manual. Working with teachers trainers and trainee teachers from the Faculty of Education, Kari Nygård, a tutor at the Bristol School of Animation, and Hanne Pederson from the Animation Workshop (Denmark), have been providing animation workshops which can be translated into curriculum activities in schools, as the basis of the research.

Amanda Wood, Director of the Bristol School of Animation, says, "The Bristol School of Animation is pleased to be selected as part of this European wide project. It is the only animation school selected in the UK, and it reflects our ever increasing focus and knowledge transfer initiatives throughout the European animation community."

*Teaching with Animation Project February 2006*



## UWE publications switch to recycled stock

Following detailed negotiations the University has, for the first time this year, printed the UWE prospectus on recycled paper and the Bulletin will also be using the same paper.

Since the appointment of the Environmental Management team in 2004, the University's green credentials have been improving month on month. Waste management has been overhauled, with a significant increase in recycling; the University has signed up to the carbon management pilot scheme, and we have recently gained Fairtrade status.

Marketing and Communications have also been working closely with Procurement and Printing and Stationery on a number of sustainability issues, such as the paper used in many of UWE's publications.

Printing on recycled paper at UWE is not new. The Faculty of the Built Environment for instance has been using recycled for some years. Traditionally, there has been a premium to pay for recycled paper and this was one of the principal reasons for not using it for major publications like the prospectuses. In terms of quality, recycled paper is indistinguishable – for most readers - from virgin stock.

This year, the University took the decision to use recycled paper for the undergraduate prospectus. We were expecting to pay significantly more for the paper, but following negotiations with printer and paper supplier, and with encouragement from the Government-funded Waste and Resources Action Programme (WRAP), we were pleased to find that the difference was far smaller than we feared.

Following a review by Procurement and Printing and Stationery, the University switched to 75% recycled paper from 27 March for all office copying and printing and central high volume laser printing. The next stage will be to trial the use of 50% recycled paper for in-house litho printing. The third step will then be to work with our external printers to ensure that they too use the same paper stock.

Best of all, initial indications are that we have made a saving of about £7,000 per year on the initial paper changes. We will be seeing a lot more recycled print in the future.

## University gains Fairtrade status

UWE is now a Fairtrade university. The Fairtrade Foundation has confirmed that the University has met all of the guidelines set to achieve Fairtrade status.

Susan Burton has co-ordinated UWE's bid for Fairtrade status: she said, "It's wonderful news and a great joint achievement for UWE's House Services and the Students' Union, but we cannot allow ourselves to become complacent – it is one of the requirements that we commit to campaigning for increased Fairtrade consumption. We need to ensure we keep promoting Fairtrade, to ensure we educate as wide an audience as possible about its benefits to the producers, their workers, their communities and their environment."

In order to gain Fairtrade status, the University had to work towards goals including creating a Fairtrade policy, ensuring that Fairtrade products are available in all shops, bars, cafés and restaurants, and offering Fairtrade options at meetings and hospitality.

Mark Webster, UWE's Environmental Manager, said, "This is great news for UWE. We have worked very hard to ensure that Fairtrade products are well promoted. We now aim to take things further and are currently in talks with the Soil Association, based in Bristol, to increase the range of organic and locally sourced produce used and sold in all restaurants."

The Fairtrade Foundation said, "Congratulations on becoming a Fairtrade university. We are delighted that staff and students of the University of the West of England are working together to promote the Fairtrade Mark. We hope that this work will continue and be extended to enthuse other universities in the future. The awareness that this is raising among the students and staff at the university will help make a better future for producers in the developing world. "

*Pictured from left to right Susan Burton (Environmental Assistant), Ryan McGavock (SU Activities President), Jayne Seymour (Catering Operations Manager) and Mark Webster (Environmental Manager).*



## Creativity and Commerce – The Film Producer

A study day was held at Watershed on 6 May by Dr Andrew Spicer, Visual Culture Research Group (BSAMD). This study day explored the neglected and misunderstood role of the film producer and in what ways creativity is possible in a commercial context. It focused on Sydney Box, one of British cinema's most successful and significant producers in the post-war period (1940-1965), best known for *The Seventh Veil* (1945).

Box's career was exceptionally varied, encompassing playwright, novelist and documentarist – his company Verity Films produced over 100 short propaganda films during the Second World War – as well as feature film producer, managing director of Gainsborough Pictures (1946-49) and independent filmmaker. Combining film and television interests, he made imaginative if unsuccessful bids for British Lion and London Weekday Television in 1963/64 before retiring to Australia.

The day was the occasion for the launch of Andrew's study of Box for the British Film Makers series (Manchester University Press) and for the UK launch of his critical edition of Box's autobiography, *The Lion That Lost Its Way and Other Stories of the Show Business Jungle* (Scarecrow Press), a witty and perceptive account of the film industry offered for publication in 1977 and believed lost until rediscovered by Andrew during his AHRC funded research.



## The Association of University Administrators (AUA)

Queen's University, Belfast, was the beautiful setting for this year's AUA Conference, held in April. Fifteen members of Bristol UWE Branch attended to gain information about current developments in Higher Education; attend workshops to enhance their professional practice; find out about practice at other institutions; and to network with colleagues locally, regionally and internationally.

This year's conference was particularly special for UWE as Beryl Furey-King (BSc(Hons), AdvDipEd, MEd), Deputy Faculty Administrator, HLSS, was recognised as a Fellow of AUA for her contribution to the development of the Association, the management and administration of HE and her commitment to continued professional development. Congratulations go to Beryl for this fantastic achievement which is excellent news for UWE as recognition of the professionalism of a member of its administrative staff.

Administrators currently looking to advance their career in higher education and who want evidence of their professionalism to increase their employability might be interested in participating in the AUA's Postgraduate Certificate in Professional Practice (Higher Education Administration and Management), a work-based

learning programme validated by the Open University. Other administrators looking to gain experience of mentoring and the many real benefits deriving from it, might find being a mentor on the PGCert programme very rewarding. Further information on becoming both a participant and mentor on the AUA's PGCert can be found at [www.aua.ac.uk](http://www.aua.ac.uk)

UWE has a fast-growing branch of the AUA and membership is an ideal way to keep up-to-date with policy and practice in HE. Membership is open to all grades of administrator at UWE. Annual Conference is due to be held in 2007 at the University of Nottingham (2-4 April) and in 2008 at the University of York (31 March – 2 April). Will you be there to put UWE firmly on the AUA



map? You could be a graduate of the PGCert, a mentor, being recognised as an AUA Fellow, a Conference speaker or a regular delegate soaking up the information! For further information please contact Helen Millican, UWE AUA Branch Co-ordinator on extension 82508.

*Beryl Furey-King*

## New look for Frenchay (Bolland) library entrance

The entrance to the Frenchay Campus (Bolland) Library is to have improved security and a new look for Autumn 2006.

With the introduction of extended opening hours in recent years, the library is now open 24 hours a day, seven days a week for approximately 34 weeks of the year. In order to increase security for library users throughout opening hours, turnstile- controlled access will be introduced at the entrance from Autumn 2006.

This means that from Autumn 2006 all UWE staff and students will need to have their UWE id card with them to enter the library. Gates will be available for those for whom turnstiles are unsuitable. A member of staff will be on duty at the entrance at all times. Although it may take some time for library users to become accustomed to using the new turnstiles,

library staff hope that the increased security will be welcomed by all library users – particularly during overnight opening hours.

In addition, as part of the project, the layout and appearance of the entrance area will also be improved for the benefit of all library users.

The building works are expected to begin on Monday 19 June and to be completed by early September. Although there will be some disruption while the works are underway, all library services will remain available over the summer.

For further information, please visit [www.uwe.ac.uk/library](http://www.uwe.ac.uk/library) or contact Library Customer Services. Tel: 0117 32 82277. E-mail: [customer.services@uwe.ac.uk](mailto:customer.services@uwe.ac.uk)

## Towards Sustainable Mobility for People in Urban Areas (SMILE)

The Centre for Environment and Planning (FBE) is undertaking the Cumulative Effects evaluation of this CIVITAS II initiative. SMILE is a four year European project funded by the European Commission which is promoting the demonstration of cleaner and better transport in seven cities across Europe.

51 demonstration measures will be implemented across the cities of Norwich, Malmö, Potenza, Tallinn, and Suceava with the objective of lowering hazardous emissions from city traffic and promoting more sustainable alternatives for people movement and the distribution of goods. In addition to undertaking the process and technical evaluation, the Centre for Environment and Planning (CEP) is also supporting the dissemination activities of these cities.

CEP is using sophisticated GIS based modelling and network analysis techniques in undertaking the Cumulative Effects Assessment (CEA). UWE will identify which measures are suitable for CEA and what data is needed. The team also will set up a GIS model for CEA, carry out an analysis of relevant policy documents and help local site evaluation teams to establish baseline positions and developing 'do nothing' scenarios.

UWE will also play a role in SMILE dissemination. SMILE will develop and implement an advanced Dissemination, Exploitation and Training Plan (DET) to exchange know-how between the European cities. The results of SMILE will have wide transferability in Europe, with particular focus on the cities of the new EU member states.

UWE will also support the DET co-ordinator through provision of input for the SMILE part of the CIVITAS II website and management of the content information about the SMILE measures and cities. With the knowledge gathered during the project UWE will also support the training activities, by providing analysis needed and by capturing the content of the training sessions in compliance with the guidelines from the DET co-ordinator.

For further information contact Professor Angela Hull ([Angela.Hull@uwe.ac.uk](mailto:Angela.Hull@uwe.ac.uk)). Team members also include Clare Mitchell, Besik Tkheldze and Reginald Tricker.



## Professor influences British Standard for sanitary installations

The revised version of British Standards Institute Document BS6465 Part 1 on levels of 'Sanitary Installations' was published in April following extensive consultations with industry, user-groups, local authorities, and building managers and designers. Professor Clara Greed (FBE), John Griggs, DTI and Michelle Barkley, SheppardRobson Architects, comprised the core group which updated these standards, providing an opportunity to transfer knowledge from UWE-based research on public toilets to shape national government policy on provision. The standards set the levels of provision for 'away from home toilets' in all sorts of buildings, such as offices, shops, factories, theatres, schools, whilst the public toilet component has also been greatly improved too.

Clara says that as a result of the changes, 'women will no longer have to queue' whilst provision will be better for everyone.

Innovations include introduction of new toilet calculation criteria, which distinguish between those facilities that are used 'regularly' throughout the day and those where the interval factor results in sudden pressure on toilets, such as during theatre intervals, sports half-times and school break times. Toilet provision has been one of the last vestiges of gender discrimination and the new standards introduce more equal provision for women, and higher overall levels by calculating building occupancy rates, using figures used for Fire Regulation evacuation figures. However, the standards are not retrospective and only relate to new buildings, but nevertheless, in due course, this should make the situation better for everyone. Great interest has been shown in the standard internationally which is now on the BSI global web.



*The Students' Union held its first Student Rep Awards Ceremony at Traders Bar on St Matthias Campus. Over 120 student reps received a certificate, signed by Sir Howard Newby and the Student Representative President, acknowledging their contribution to improving the student experience at UWE. Special awards were also handed out for best achievement, most random issue, best attendance, wooden spoon and outstanding contribution. To see the full set of photos and find out which Faculty won the awards, log onto [www.uwesu.net](http://www.uwesu.net) or e-mail [David.Owen@uwe.ac.uk](mailto:David.Owen@uwe.ac.uk).*



## The Ede & Ravenscroft Prizes for 2005/6

This year there are two prizes available.

### Prize one

Nominations are requested for the prize of £1,000 which is donated by Ede & Ravenscroft, the University's appointed robe makers, to a student that has shown outstanding personal achievement.

This is not simply a prize for the 'best student' in academic terms but can be awarded, for academic performance; improvement from previous year's performance or initial entry qualifications; overcoming disadvantages concerned with home circumstances, disability; health or other matters; leadership and promoting the interests of the University community; community services; contribution to the life of the University.

The prize is awarded each year to an undergraduate student who is not in the final year of his or her course. Both full-time and part-time students are eligible to receive the prize.

### Prize two

Nominations are requested for the prize of £250 which is donated by Ede & Ravenscroft, the University's appointed award ceremony photographers to a student for services to the local community.

Citations may refer to one or more of the following: environment issues; assisting elderly people; assisting disabled people; mentoring children; mental health support; family support; working with charitable organisations.

The prize is awarded to any UWE student (full-time, part-time, undergraduate or postgraduate).

Nomination forms can be obtained from libraries, Faculty offices, the Students' Union, Student Accommodation Services and the Centre for Student Affairs.

Completed nomination forms should be returned to the Centre for Student Affairs, UWE, 3F Reception, Frenchay Campus, Coldharbour Lane, Bristol BS16 1QY by 14 July 2006. Any queries contact Alison Warren tel. 0117 32 82853 or e-mail [Alison.Warren@uwe.ac.uk](mailto:Alison.Warren@uwe.ac.uk).



## Event compares Europe-wide social work practices

Lecturers from all over Europe recently attended a series of workshops in HSC in which they shared their experience of how particular social problems were addressed in their respective countries with their counterparts from the UK.

'What can we learn from Europe?' was organised by Liz Frost (HSC's Director of International Developments and the social work programme) with support from Barnados Bristol and the University of Gloucestershire.

Over 40 social work practitioners, students, trainers and academics reflected on the similarities and diversities in European social work and shared their knowledge on key areas in a series of workshops and panel discussions.

Speakers covered issues like the change in family functioning in Lithuania since independence, contemporary youth work in Hungary, and the current policy on asylum seekers within the EU and in the UK. Workshops offered European perspectives on various aspects of social work theory, policy, research or practice and each day ended with an open panel discussion in which the European lecturers answered questions on their country's social welfare.

This is the first training project launched in relation to the social work programme's membership of the 'European Social Work Thematic Network: European Platform for World Wide Social Work'.

"The informal evaluations were fabulous", said Liz Frost. "Everyone was just so excited by the topics presented and about how so much diversity and so much similarity can exist at the same time in one continent. Hopefully lots of good new networking also came out of the time spent together. The EUSW thematic network currently has a hundred members, across every EU state, and three of which, including UWE, are from the local area. We are now on the core board of this exciting project, and we hope this gives us the chance to make strong and far-reaching European connections for social work research, for training and for offering our students a far more internationally informed education."

For further information please contact Dr Liz Frost on: ext 88766 or e-mail: [Elizabeth.Frost@uwe.ac.uk](mailto:Elizabeth.Frost@uwe.ac.uk)



*European social work lecturers with Liz Frost at St Matthias*

## Obituary: Jessie Boyd

We were very sad to hear of the death on 23 April of Jessie Boyd. Jessie worked in Marketing and Communications as receptionist (job-share), in the days when the University's Main Reception was in A block. Jessie made up for her physical frailness with tremendous mental energy and determination, and a wicked sense of humour. Her cakes were legendary, as those who were lucky enough to have a birthday at the right end of the week can testify. She will be greatly missed.

## Students from local schools get into science at UWE

Around 100 budding young scientists got the chance to experience the excitement and challenge of science subjects at university in a one-day event designed especially for them by staff in the Faculty of Applied Sciences.

Year 10 students from secondary schools in Bristol visited UWE's Frenchay Campus on Wednesday 26 April for 'The Excellence Challenge', a one-day event designed to challenge and stimulate their knowledge and understanding of science subjects. Students were given opportunity to do workshops in DNA, genetic engineering, glowing bacteria, antibiotics, and Forensic Science.

Organiser, Dr Stuart Shales said, "This is the fifth year running that we have held this event and it gives the students a chance to experience a far greater range of possibilities and broadens their understanding of what studying science might open up for them. It is an opportunity for them to extend their scientific knowledge and to focus on new areas which they may not previously have considered – such as forensic science and genetic engineering."

The secondary schools taking part were Hengrove, Fairfield, Whitefield, Monks Park, Brislington and St Bernadettes.

## Free foreign language learning for staff

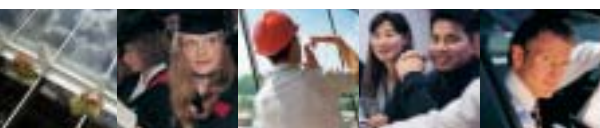
Would you like to learn a foreign language or continue studying a language at a higher level? The Faculty of Humanities, Languages and Social Sciences (HLSS) offer part-time courses in 11 languages as part of the Institution-Wide Language Programme (ILP).

- Arabic • Cantonese • Mandarin Chinese
- English as a Foreign Language • French • German
- Italian • Japanese • Portuguese • Russian • Spanish

Classes are taught for a total of 23 weeks throughout the academic year from October to May/June and are free to UWE staff (up to a maximum of 30 credits).

UWE staff may enrol for an ILP language module from June 2006 onwards by coming to HLSS Information Point (3E31) or attending one of the ILP enrolment sessions between 19 and 28 September (details can be found on our website).

For further information please visit [www.uwe.ac.uk/ilp](http://www.uwe.ac.uk/ilp) or e-mail [ilp@uwe.ac.uk](mailto:ilp@uwe.ac.uk)



## Book has second print run to meet demand

*Interprofessional Working in Health and Social Care: Professional Perspectives*, co-edited by Gillian Barrett, Derek Sellman and Judith Thomas (all HSC) and published by Palgrave Macmillan is to have a second print run due to its success since its launch in December.

The book aims to help health and social care professionals gain an understanding of interprofessional working and gives examples of interprofessional working in practice. A broad range of expertise is covered, with case studies providing insights into the realities of working in education, housing, nursing, medicine, midwifery, physiotherapy, occupational therapy, police, probation, radiography, social work and youth work.

The book includes contributions from 14 members of Faculty of Health and Social Care staff as well as staff from FBE and Education. In addition there are contributions from academic colleagues at the Universities of Bristol, Portsmouth, Salford, Middlesex, Kingston as well as colleagues from practice.

A recent review by Hugh Barr (Emeritus Professor of Interprofessional Education and President of The Centre for the Advancement of Interprofessional Education) included within the

Journal of Interprofessional Care identifies this book as a 'timely and well-judged contribution', based upon the experiences of the editors and contributors, commenting that others may be 'inspired by the example set by the University of the West of England' in sharing experience with fellow teachers.



Editors and authors of the book

## Inaugural UWE staff seven-a-side football league reaches a climax

The first season of the UWE Faculty/Service seven-a-side football league is now reaching a climax. The final round of games will be played in early May. This inaugural league has featured four teams fighting it out for the league title.

FAS, CEMS, ITS and BBS have played each match on the UWE Frenchay all weather pitch, on Thursday evenings between 18:00 – 19:00, and have offered the opportunity for all closet Wayne Rooneys and John Terrys amongst UWE staff to show off their silky skills.

There are plans to run another league over the summer and the league organisers would be happy to hear from anyone who would be interested in fielding a team. Teams are seven-a-side and should be available between 18:00 – 19:00 on weeknights for the league games. There is a small cost per team for entry to cover the cost of pitch hire.

Please contact Karl Daly on Karl.Daly@uwe.ac.uk or Dave Voss on David.Voss@uwe.ac.uk for further details.

*MSc Environmental Health students decided to celebrate the end of their course by spelling out UWE. Pictured from left to right are back row David Coles and Neil Green (U), Darren Naraine and Tom Carley (W) and Charlotte Thomas and Emily Greenway (E), front row Stephanie Loveitt and John Pullen.*



## Centre for Psycho-Social Studies hosts colloquium at Dartington Hall

The Centre for Psycho-Social Studies (HLSS) hosted a colloquium at Dartington Hall in Devon on the weekend of 7 April 2006. The colloquium explored the nature of love and passion in the workplace and the way in which people share quite strong commitments to work and vocation but often in different ways.

The event was attended by over 30 passionately committed professionals from a wide range of disciplines. They included health care professionals and executives, businessmen, academics, researchers, organisational consultants, psychotherapists, spiritual leaders and even a television producer.

The result was an intensely engaging work-related weekend shared by people who would be unlikely to meet in the course of their daily work. Participants were able to exchange knowledge and experience from different spheres of work through a series of group and small group work sessions. The programme included sharing, illustrating and conversing about roles and passions; and initiating specialised small group learning opportunities.

The colloquium was organised and facilitated by Herbert Hahn, Senior Visiting Research Fellow at the Centre for Psycho-Social Studies in association with Teresa Howard (University of Reading and The Group Analytic Society) and Amelie Noack (Institute of Group Analysis).



## Obituary: Professor Tamsin Wilton (1952-2006)

Professor Tamsin Wilton's untimely death on 30 April has deprived the Sociology School of one of its most dynamic and colourful characters, and ended an extraordinary research and teaching career of growing international acclaim.

Tamsin's educational background was a rich and complex one – and her students and colleagues benefited enormously from that fact. She took her first degree in English and Fine Art in 1973 at the University of Exeter, and, after a PGCE, went on to become a schoolteacher of both those subjects. Her enthusiasm and artistic creativity soon took her on into a career as a book illustrator and links with the Arnolfini, where she became Executive Manager. HTV too appointed her as a community media officer.

At the same time she developed a growing interest in gay and lesbian issues and the explosion of the AIDS crisis of the 1980s saw the development of a new side of Tamsin – as a researcher and activist, initially with the Aled Richards Trust Women and AIDS group. She went back to university as a postgraduate student in 1990, taking an MSc in Gender and Social Policy at the University of Bristol. After that her links with Bristol Polytechnic/UWE began as she was made Director of the HIV/AIDS Social Research Unit.

Working initially in the old Faculty of Nursing Health and Applied Social Studies, then, at a later date joining the



Sociology School in HLSS, Tamsin's career as a researcher into the social aspects of human sexuality really took off. She was made Professor of Human Sexuality in 2005. Tamsin's energy and capacity for research work was prodigious, in spite of often poor physical health. Somehow, she published ten, single authored, books in 14 years and goodness only knows how many articles, chapters, pamphlets and reports. She gave papers all over the world as her reputation grew and she was an international consultant to the AIDS Education Research Trust in Southern Africa.

Colleagues treasured her good nature and humour as much as her scholarship; she had a sly grin and a wicked capacity to tease, not least in the outrageous titles of many of her publications. Her brilliant and exciting inaugural lecture, held in the Watershed before an astonishingly large audience for a professorial debut, was entitled 'Popcorn Venus and the Ithyphallic Tintinnabulum' and it drew on her extensive knowledge of art and literature as well as on her original research. Tamsin's creativity, humour and intelligence shone through everything she did. She was very much a West Country girl, studying in Exeter and Bristol, and she died in her second home in Cornwall. She leaves a son, and a gap in the sociology research field that cannot be filled.

*The annual School of History (HLSS) Sixth Form Study Day was held on 20 April and was attended by over 140 students from across the South West, including some local schools. The event included lectures, seminars and workshops on a range of topics, from Al Capone to poverty and welfare in Edwardian Britain. The purpose of the day was to build links with schools and with prospective students and their teachers; a key strand of knowledge exchange. In addition, for many of the students the study day was a first experience of teaching and learning methods at university, as well as providing an opportunity to interact with students from other schools and see the campus and its facilities. The participation of several schools in successive years reflects the value placed on the study day as well as the development of effective links. Feedback from students and teachers was overwhelmingly positive. As well as input from the School of History the event also drew upon the expertise of other HLSS colleagues and the Admissions, Marketing and International Office and was, therefore, a collaborative effort.*



*Dr Phil Ollerenshaw leads a workshop on The Irish Question*

## Musical morning for Halley Nursery children

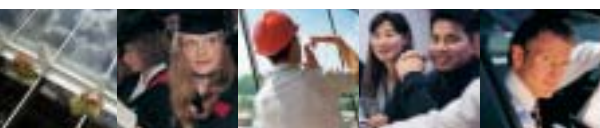
The children and staff at the Students' Union Halley Nursery were treated to an exciting morning of music from musician and record producer John Parish. John, whose daughter attends the nursery at St Matthias, has worked with bands such as PJ Harvey, Eels and Tracy Chapman.

John kindly brought his drums and guitar to give the children a morning of singing, dancing and music making. They excitedly took turns to make their own music - some showing promise as possible future musicians!

The SU Halley nursery offers caring quality childcare for children (aged six months to four years) of students and staff at UWE. For more information or an application form please ring 32 84452 and ask for Jane or Jackie.

*John Parish, right, with children and staff at SU Halley Nursery*





## New research opens doors to independence for people with dementia

A new research report carried out by older people's housing association Housing 21 in collaboration with UWE, the Housing Corporation, and Dementia Voice says that extra care housing is a resoundingly popular accommodation choice for older people who develop memory problems or dementia and need to move out of their homes.

Simon Evans, (HSC) was co-author of the report, 'Opening doors to independence', a three year study into older people with dementia who live in extra care housing. The report warns that the Government's agenda for increased choice and independence of older people is at risk without better resources and increased co-operation between housing, health and social care providers.

The study found:

- Extra care housing has a key role in maintaining independence and health of people with dementia.
- With the right support, people with dementia and memory problems are able to live independently in extra care housing for nearly as long (around two years) as people without significant cognitive impairment.
- Older people with dementia – and their families – choose extra care housing because it meets their needs and aspirations better than other accommodation options.
- Friends and relatives are more likely to remain part of an informal support network of residents living in extra care housing, compared to people living in hospital, or nursing or residential homes.

Simon Evans, senior research fellow at UWE says, "This is the first national study of extra care housing for people with dementia. Its findings have implications for government policy in providing appropriate housing options for increasing numbers of older people. A major strength of this study is that it involved older people with dementia and their families and shows we can gain meaningful insight into their views. The findings are firmly based on the views and experiences of people with dementia."

Copies of 'Opening doors to independence' are available, price £25, from Housing 21. A summary of the report is available free and can be downloaded from [www.housing21.co.uk](http://www.housing21.co.uk).

## Positive feedback on new Nursing electives

Nursing students in Health and Social Care are full of praise for the new system of Year 3 electives which have taken students to a variety of health settings from rural Family Health Clinics in Uganda and Ghana, to prison hospital units at Shepton Mallet and Horfield prisons, Avon Ambulance Service, and emergency departments in South London hospitals.

Pre-registration nursing students now have the opportunity to apply to undertake a four week elective in a non UWE health and/or welfare setting at the beginning of their third year. Students taking the elective have also been to Dubai working with children's in-patient health care, a residential school for children with complex health needs, and Starship Children's Hospital, Auckland.

Student feedback on the electives has been positive with all students saying they value the opportunity to diversify their learning. Students say taking part gives them new skills and knowledge, but also boosts their confidence and enhances future career opportunities. Responsibility for the smooth running of the electives lies with a small but dedicated group of nursing lecturers. For further information contact Maggie Whittle, Eric Broussine, Victoria Lavender, Sue Yates, or Eirlys Grindrod.



Students reporting back from an elective in Dubai

## Martial Art Classes for Women

(female instructor)

**Learn self defence, improve your fitness and confidence**

Classes of the ancient Korean art of 'Tang Soo Do' take place on Monday and Wednesday nights at Warmley and Mangotsfield.

Mixed gender classes also available at Kingswood and Whitchurch

For further information

e-mail: [Victoria.Elvens@uwe.ac.uk](mailto:Victoria.Elvens@uwe.ac.uk) or  
tel: 07773 345407

## World Cup Football on the Big Screen in Core24

The World Cup is about to kick off in Germany as on Friday evening 9 June the opening match will be played between Germany and Costa Rica and England playing their first game on Saturday 10 of June against Paraguay.

During the week all live matches starting at 15:00 or 17:00 will be shown.

In addition to this all recorded evening matches will be shown the next day from 12 noon onwards.

The World Cup progress and match schedules to be shown on the Big Screen is on display in Core 24.



# BRISTOL FESTIVAL OF NATURE

3-4 JUNE 2006



## Saturday 3 – Sunday 4 June 2006

**Get ready to go wild around Bristol's Harbourside**

Explore the changing face of our planet with unusual creature encounters, wild walks and talks, nature boat trips, workshops, outdoor film screenings and a vibrant marketplace.

**At-Bristol, Millennium, Anchor and Waterfront Squares**

For details visit [www.festivalofnature.org](http://www.festivalofnature.org) or call 0117 915 0178



## The Alternative Series 2006

# A Crisis of Multiculturalism or of Britishness?

## Professor Tariq Modood

Centre for the Study of Ethnicity  
and Citizenship, University of Bristol

Is there a crisis of multiculturalism and if so, is multiculturalism worth saving? Should it be replaced with 'integration' into Britishness? Tariq Modood suggests that these are not minority problems alone. If too many white people do not feel the power of Britishness, it will only be a legal concept and other identities will prevail. We cannot both ask new Britons to integrate and profess that being British is a hollowed-out, meaningless project whose time has come to an end. This will inevitably produce confusion and will detract from the sociological and psychological processes of integration, as well as offering no defence against the calls of other loyalties and missions – such as jihadism.

Tariq's most recent book is *Multicultural Politics: Racism, Ethnicity and Muslims in Britain* (Minnesota and Edinburgh University Presses, 2005); he has also co-edited *Ethnicity, Nationalism and Minority Rights* (Cambridge University Press, 2004); *Ethnicity, Social Mobility and Public Policy in the US and UK* (Cambridge University Press, 2005); *Multiculturalism, Muslims and Citizenship: A European Approach* (Routledge, 2006).



Tickets £6.00  
(concessions £4.50)

Wednesday 21 June 2006 at 19.00  
Watershed Media Centre, Bristol

Tickets available in advance from the Box Office, Watershed Media Centre,  
1 Canon's Road, Bristol BS1 5TX Tel: 0117 9275100

For further information about the Centre for Critical Theory, please  
Tel 0117 32 84321 or visit <http://www.uwe.ac.uk/hlss/research/cct>





**Dr Benedict O'Donohoe (HLSS)** gave an invited lecture to the French Department of the University of Bristol on 2 May. Ben's well-attended talk, entitled 'Why Sartre stopped writing plays', drew on the concluding chapter of his recent book, *Sartre's Theatre: Acts for Life* (Peter Lang, 2005).

**Christien van den Anker (Politics, HLSS)** will be leading a project on trafficking for forced labour funded under the ESF collaborative research scheme. The project has partners in Sweden, Poland, Czech Republic, Belgium and Ireland. It will look into practices of migrant trafficking for forced labour in a range of industries and domestic work. The partners are funded through their national funding agencies and the overall project budget is nearly 1 million Euros. The project will last from September 2006 until August 2010.

**David Allen (Economics, BBS)**, has recently won a JISC bid worth £25k to continue to develop his work on an 'academic performance profiler' (APP).

## Conferences

**Hugh Barton (FBE)**, Director of the World Health Organisation (WHO) Collaborating Centre for Healthy Cities, attended the WHO Member States intersectoral consultation on promoting physical activity for health, held in Ljubljana, Slovenia on 9-10 May 2006. Organised by WHO Regional Office for Europe, this was the preparatory meeting for the Ministerial Conference on Counteracting Obesity, in Istanbul in November. Hugh gave one of the key agenda-setting speeches. His subject was the role of urban planning in either constraining or creating opportunities for physical exercise. The consultation meeting was attended by top officials from most European Countries, including the Russian Federation, Turkey and the countries of former Yugoslavia. Its main purpose was to revise and validate the draft European Charter on Counteracting Obesity, to which all countries will be invited to sign up at the Istanbul conference.

**Dr Julie Kent (HLSS)** attended a workshop in Lund, Sweden in March organised by the EU Framework funded Eurostemcell Project. The focus of the workshop was 'Commercialisation and Ethics of Stem Cell Research' and explored a range of issues relating to the patentability of the human body, human embryos and stem cell lines and obstacles to commercialisation of therapies using stem cells. It provided an important opportunity to meet with international researchers from a variety of disciplinary backgrounds with interests in this area and to discuss aspects of the ESRC project Julie is working on with Professor Naomi Pfeffer (London Met) looking at the collection and use of foetal stem cells.

On 6 April, **Dr Charles Butler (HLSS)** gave a paper entitled 'Children of the Stones: Prehistoric Sites in Children's Fantasy Fiction' to the interdisciplinary conference on 'The Cultural Reception of Prehistoric Monuments' held at the University of Bristol, 6-7 April.

**Professor David James (EDU)** presented a paper with Professors Crozier (Sunderland) and Reay (Cambridge) at the American Educational Research Association annual conference in San Francisco, 7-11 April. The paper set out some early analysis from their joint ESRC project entitled 'Identities, Educational Choice and the White Urban Middle Classes.'

**Dr Karen Harrison (Law)** attended the Socio-Legal Studies Association annual conference in Stirling, Scotland from 28-30 March and gave a paper entitled 'Tough on Crime, tough on the causes of crime: should the sex offender strategy in England and Wales also include the option of chemical castration?'

**Professor Clara Greed, (FBE)**, presented a paper on 'A spatial strategy for public toilet provision' and co-presented with Professor Julienne Hanson of UCO a second paper on 'The Challenge of Designing Accessible City Centre Toilets' at the Annual Ergonomics Society Conference at Robinson College, Cambridge, 5-7 April, and also chaired the introductory

session of the 'Inclusive Design in the Built Environment Symposium'.

**Fern Urquhart, Business Interface Team Manager (CRIGS)**, gave a keynote speech at Stirling University on 4 May on best practice in Knowledge Transfer between universities and HEIs. She presented on UWE's recent prizewinning Knowledge Transfer Partnership (between FBE and North Bristol Healthcare Trust) which won this year's ESRC prize for KTP programmes. The conference in Stirling was entitled 'Innovation and Healthcare in the Delivery of Health and Social Care' and the UWE presentation focused on Stakeholder Consultation expertise across UWE faculties. Present were NHS Trusts from across the UK, together with representatives of DTI, DOH and other UK universities with an interest in health-care research.

## Staff in the media

An article on the 'chemical brains' research of **Professor Andy Adamatzky (CEMS)** and **Ben De Lacy Costello (FAS)** has been published in the German magazine *Gehirn & Geist* (an analog of American 'Scientific American').

**Philip Jones (Law)**, was interviewed on the Keith Warrington Show on BBC Radio Bristol on Monday 27 March in relation to the Court of Appeal case between Ann Marie Rogers and Swindon Primary Care Trust. The case concerns the refusal of the Trust to fund treatment of her early stage breast cancer with the drug herceptin pending the licensing decision of NICE (the National Institute for Health and Clinical Excellence).

**Henry Shaftoe (FBE)** was interviewed about the effectiveness of Anti-Social Behaviour Orders (ASBOs) on BBC Points West on Thursday 30 March.

**Ron Ritchie (EDU)** was interviewed by BBC Radio Bristol on 16 March and BBC Points West on 17 March about Trust schools and the Education Bill.

**Moirra Plant (HSC)** was interviewed by numerous regional radio stations following a press release that was sent out entitled 'Binge Drinking Culture Fuels Future Health Problems', these included BBC Radio 4 Women's Hour, BBC Radio Kent, BBC Radio Stoke, Century FM, Herts Radio 106, East Midlands and BBC1 Extra. Moirra was also quoted in various regional newspapers, the Daily Mail and BBC online.

**Debra Salmon (HSC)** was interviewed by BBC Radio Bristol on 3 April about training Ghanaian midwives to spot domestic violence.

**Professor Martin Plant (HSC)** took part in a discussion on addiction on the Chris Evans Show, on BBC Radio Two on Wednesday 3 May.

**Ian Henderson (CPA)** was interviewed by BBC Radio Bristol on 13 March about the latest CPA production *Fame*.

**Professor Philip Lawrence (CEMS)** was interviewed by BBC Points West and BBC Radio Bristol on 7 April about Airbus sell off.

**Lisa Harrison (HLSS)** appeared on ITV West's The West this Week a local election programme on 4 May. Lisa was also interviewed by BBC Radio Bristol on 2 May about current Labour party issues and the local election.

**Professor Nicky Rumsey (FAS)** was interviewed on the BBC World Service on Thursday 4 May where she took part in a panel discussion about cosmetic surgery.

**Dr Emma Halliwell (FAS)** was interviewed on BBC Points West, HTV West, BBC Radio Bristol, GWR and Star FM on 3 May about the new study from the Centre for Appearance Research about teenage boys being at risk of developing body dissatisfaction and eating disorders as a result of perceived peer pressure and media images. Emma was also interviewed on ITV West, GWR FM, Vibe FM, and BBC Radio Bristol on 16 May about her research looking at how Barbie dolls affect the self image of young girls.

*continued overleaf*



University of the  
West of England

Start here, go anywhere

**UNDERGRADUATE**

**OPEN DAY**

**Wednesday 14**  
June 2006

**10.00 - 16.00**



**Register online**  
[www.uwe.ac.uk](http://www.uwe.ac.uk)


Up to  
**£3,950**

each year to  
help you with  
the cost of  
your studies

telephone  
e-mail  
write to

**0117 32 83333**  
**[open@uwe.ac.uk](mailto:open@uwe.ac.uk)**

Open Days, Admissions and International  
Recruitment, Bristol UWE,  
Frenchay Campus, Coldharbour Lane,  
Bristol BS16 1QY

 [www.uwe.ac.uk/money](http://www.uwe.ac.uk/money)





## Publications

Professor Grace Dorey's (HSC) book entitled, 'Clench it or Drench it!' for *Ladies who Lunch, Laugh and Leak* was recently mentioned in *The Mail on Sunday, You Magazine*. This generated 600 requests for the book, mostly from women too embarrassed to see their GP. The book costs £7 + £1 p&p and is available from Professor Grace Dorey, Old Hill Farm, Portmore, Barnstaple, Devon, EX32 0HR.

Research work in Romance Philology by **Dr Cyril Hershon (HLSS)** is being published by the University of California. The first is a long review of *Sempre los camps aura segadas resurgantas*, *Mélanges*, 53 contributions offered to Professor Xavier Ravier. The second is an edition of the Occitan manuscript, *Bibl Nat fr 1852*, 'How

to Gain Salvation', a 15th century cleric's advice to the lady to whom he was confessor, and written in the dialect of the Rouergue. Further, the Société Archéologique de Béziers has just published Dr Hershon's researches on Matfre Ermengaud and the Law.

The latest article by **Dr Neil Edmunds (HLSS)** 'William Glock and the British Broadcasting Corporation's Music Policy, 1959-73' will be published in the June edition of *Contemporary British History*. The article sets the ideas of Sir William Glock, Controller of Music at the BBC 1959-73, in their historical and philosophical context, and by doing so seeks to explain why the labels 'contemporary' and 'avant-garde' became indistinguishable during the 1960s and the logic by which more traditional but still contemporary

works were excluded from programmes devoted to 20th century music.

**Professor Clara Greed (FBE)** contributed two chapters to the recently published book *Managing Diversity and Equality in Construction*.

## Appointments

**Dr Abdul Farooq (CEMS)** researcher in the Machine Vision Laboratory, part of the Centre for Innovative Manufacturing and Machine Vision Systems (CIMMS) recently obtained his Chartered Engineer Status.

**Professor David James (EDU)** has been invited to become Visiting Professor of the Faculty of Education and Psychology at the University of Latvia. The arrangement will include research

seminars for staff and doctoral students. It builds upon a long-standing collaboration that began with a joint Master's programme shortly after Latvian independence.

**Professor Colin Fudge (Pro Vice-Chancellor)** is to be appointed Chair of the International Expert panel on Sustainable Development and Climate Research of the four Swedish Research Councils. This joint programme of research across the Research Councils involves the Swedish Research Council for Environment, Agricultural Sciences and Spatial Planning; the Swedish Science Research Council; Swedish Governmental Agency for Innovation Systems; and the Swedish National Space Board. Work will begin later in the Summer.

## Centre for Performing Arts

### Canterbury Tales

Geni Hall-Kenny's excellent professional direction of her seventh play for UWE made this show uniquely outstanding. Martin Riley gave a most interesting pre-performance talk, with which he had previously greatly inspired both the play's cast and director.

The completely different tales were cleverly interwoven by four alchemists. True to their title those actors really could turn metal into gold! In fact all the large cast did this in terms of their superb performances making perfect use of a flat uncurtained stage with a minimum of scenery.

The popular five tales, being quite diverse, challenged each cast to, at least, match their colleagues in the others. The musical accompaniment throughout represented the historical acting themes. Consisting mainly of an African style drum and electric keyboard it was excellently performed. The props though simple were cleverly designed, mostly positioned to provide the maximum dancing and general performing area. Dustbins, a round table with a box and two sets of steps supporting a board between them with a curtain hanging down (which gave two lovers a hiding place!) A staircase on each side of the stage.

It would be difficult to place in an order of excellence such different plays each with requisite acting and appropriate costumes, superbly designed overall by Donna Best. Every aspect was outstanding to the great credit of Geni Hall-Kenny's direction, aided by her assistant Emma Kendrick, Choreographer Malcolm Grieve, Production Manager Andy Broomsgrove and all members of the crew. Similarly, the acting by 26 students who, undoubtedly, spent a great deal of their 'spare time' rehearsing over many weeks, thereby giving brilliant performances. An excellent and quite outstanding show that will undoubtedly be long remembered.

### Fame

A story of students at a School for Performing Arts in New York. It is intriguing that UWE's CPA transposed it to Bristol, particularly since *Fame* is an especially challenging musical. Commencing with the excitement of young people opening their mail, anxious to know whether they have been accepted for the School, spirited dancing expresses their joy on reading the good news.

The experience and progress of students was challenging to those involved in the separate Drama, Dance and Music classes. The teaching roles were equally exacting and demanding - all well met particularly by Jacelah Galbraith's leading English teacher role of Miss Sherman. Interplay between students forms the development of the plot with appropriate musical - and dancing - numbers well performed with songs such as 'I Want to Make Magic' and exhilarating dancing, including rap. A lunch scene featuring 'There she Goes/Fame' was quite electrifyingly performed. The excitement and performing skill enthralled the audience throughout bringing spontaneous bursts of applause.

The choreography was superb throughout with 30 or more dancing around energetically and including two students skillfully dancing a ballet pas de deux. Singing and acting were excellent, particularly Naomi Bates' Serena, Alex Milner's Jo and Sean Green's Tyrone (and his rap!). It reflected great credit on all concerned with the production and musical direction led by Ian Henderson. The prolonged loud applause acknowledged this. Very professional indeed.

Alec Ewens

### Bulletin deadlines 2006

Month/Issue	Copy deadline
June/59	Thursday 1 June
July/60	Monday 3 July
September/61	Friday 1 September



University of the  
West of England



Centre for  
Critical Theory

## Talks@Watershed - Spring 2006

CCT presents a series of informal talks at the Watershed by UWE academics. Come and join in the debate.

### Dr Pamela Karantonis

Lecturer in Drama, UWE

### Dr Andrew Wyllie

Lecturer in Drama, UWE

---

## Staging Identity: Theatre, Sexuality and Gender

---

Wednesday 7 June, 2006 18.30

Where does the drama of our identity begin and end? Performativity and role-play are central to the formation of identity in the post-war Anglophone world. Connected to this is the controversy of authenticity and its enabling opposite – the inauthentic – in these processes. In drama and performance art the metaphor and reality of theatricality exists both on the stage and in the world, where it impacts upon the self and wider social and cultural perceptions of gender, sexuality and selfhood.

---

Tickets £2.50 (concessions £2.00) Tickets available in advance from the Box Office. Watershed Media Centre, 1 Canon's Road, Bristol BS1 5TX  
Tel: 0117 9275100

For further information about the Centre for Critical Theory Tel: 0117 32 84321 E-mail: [cct@uwe.ac.uk](mailto:cct@uwe.ac.uk) or visit our website  
<http://www.uwe.ac.uk/hlss/research/cct/>





## Personnel Update

### Local Government Pension Fund Clinic

Thursday 8 June, 4E13

If you would like an appointment, to discuss your pension with a team of experts from the Avon Pension Fund, please e-mail Tracy.Sage@uwe.ac.uk or telephone ext 82730 for further information. Appointments will be limited, so contact me today to avoid disapproval.

### Age discrimination

The Employment Equality (Age) Regulations 2006 come into force on 1 October 2006. The Regulations aim to provide protection to those subject to discriminatory practices and to stimulate cultural change to increase the population of older and younger workers in the economy, while at the same time helping employers draw upon a wider pool of workers. The regulations:

- cover employment, vocational training (including staff

training), dismissal and retirement, occupational pensions, recruitment, promotion and transfer, pay and non-pay benefits, harassment and victimisation

- introduce as lawful either a retirement age above age 65 or a default retirement of age 65 (NRA – normal retirement age)
- lower age for retirement only where this can be objectively justified
- introduce a right, for employees, to request to continue to work beyond the retirement date. The employer has a duty to consider that request.
- remove the upper and lower limits for statutory redundancy payments and the tapering of provisions post age 64

The University is currently looking at its policy provisions in line with these regulations and will be developing a policy specifically to deal with its duty to consider requests from employees to continue to work beyond the NRA.

## Staff Association

### Prize winners of the Grand Christmas Raffle – 15 Dec 2005

Giant Decorative Egg - Claire Denney, Fin  
M&S Luxury Basket - Teri O'Riley, TSU  
Outdoor plant & pot - Val Wicksey, FAS  
Purple floater bowl + Bag of chocolate eggs - Luke French, P&S  
GuyLian Luxury Egg - Carol Graham, FBE  
Thorntons Dark Chocolate Egg - Brenda Scammel, Traders  
Hotel Chocolate Butterfly Egg - Monica Sowinska, Catering  
Carton of egg candles - Pat Clark, Fin  
Cadbury's Roses Easter egg delight - Jane Sheppard, Lib  
Chivas Regal Whiskey - P Parnell, 3rd age  
Chocolatier Egg - Claire Smith, SU  
Thorntons Milk Continental Egg - Pat Clark, Fin  
Planter set - Helen Jackson, SaRI  
Dove Waves - Chris, Vending  
B B Q - Isobel Cooke, CRIGS  
Thorntons Bunny Pals - Jan Major, FBE  
Lindt Swiss Egg - Mavis Baldwin, SAS  
Harrods Easter Bunny - John Kemp, ITS  
Hand decorated rich fruit cake - Jenny Ball, 1D11  
Bunny Go Round - Shaila Shastry, Fin  
Set of 4 Purple Wine Glasses - Claire Gardner, Glen  
Sainsbury's Belgian Dark Choc Egg - Barbara Villis, H&S  
M&S Mr & Mrs Duck - Alice Maltby, BBS  
Winnie the Pooh Honey Egg - Andrew Robinson, P&S  
Ferrero Cherry - Tina Hattingh, SU  
Body Fat Scales - Carolanne Cairns, ITS  
M&S Great Egg Hunt - Mel Clarke, Lib  
Large Milka Rabbit - Della Kempton, Fin  
Ferrero Rocher - Katy Veale, Felixstowe  
Champagne - Katy Oliver, Lib  
Milk Tray chocolates - Nicola Maher, M&C  
M&S Simnel Cake - Julia Long, HLSS  
Thorntons Bunny - Graham Wright, Law  
M&S Swiss Chocolate Box - Roland Kandiah, Glen  
Indoor plant arrangement - Malcolm Hodges, BBS  
Garden lights - Kate Britton, CEMS  
M&S Operetta & Cherry Liqueurs - Sam Hutchins, FAS  
Hotel Chocolat Champagne Truffles Egg - Lorraine Kirby, HLSS

Egg Cooker - Gill Weaden, FBE  
Green & Blacks Egg - Jane Lovell, BBS  
Thorntons Special Toffee Egg - Di Luff, Fin  
2 Tier Food Steamer - Lyn Pearce, FBE  
M&S Flower Egg - Elaine Harris, Personnel  
Harrods Large White Chocolate egg - Chris Aggett, Catering  
Sainsbury Belgian Choc Assortment - Angela England, Outreach  
Thorntons White Chocolate Egg - Brenda Scammel, Traders  
All Gold Chocolates - Val Wicksey, FAS  
M&S Amoroso Wine + Turkish Delight - Margaret Gilbertson, Law  
Glass napkin holder + Serviettes - Mavis Barnwell, FBE  
Thorntons Milk Chocolate Egg - P Parnall, 3rd age  
M&S Swiss Egg - Stephen Rankin, Lib  
Galaxy Egg - Elaine Moger, Dir  
Petits Desserts Egg - Rob Cuthbert, Dir  
Bendicks Gorgeous Egg & Teddy - Phil Skidmore, Fin  
Gordon Ramsay Egg - Carol Jarvis, ITS

### Coach Club

**27-29 May Kent** Saturday 8 July Dartmouth - NEW

Two nights dinner, b&b, staying at King Charles Hotel, Gillingham. A fully packed weekend with visits to Leeds Castle, Chatham Dockyard and Bluewaters. Cost £120 inc

**Saturday 10 June Lipizzaner Stallions**  
Cardiff NIA - Few seats left  
Cost £10.50

Special price - members £8 (1 ticket per member), £10 non-members.  
Watch out for new trips via e-mail and posters.  
If you are interested in any of these trips tel 0117 32 83001 or e-mail coachclub@uwe.ac.uk

## Staff Ads

**Stockholm Archipelago** - Baltic island traditional wooden summer house sleeps 5. Close to harbour, café, beach, cliffs. Boat and road connection to Stockholm. Available July-Aug. £300-350/w. Tel Prof Colin Fudge 01275 394955 e-mail:katarina.frank@btopenworld.com

**Reliable and reasonable** experienced plumber and general builder available to work throughout Bristol and the surrounding areas. Also, extensive range of kitchens from budget to luxury designed and supplied at competitive prices. Call Didi on 01454 312535 or 07974 769801. E-mail RHT@vanos.freeseve.co.uk

**Martial Art Classes for Women**. (female instructor). Learn Self Defence, Improve your Fitness and Confidence. Classes of the ancient Korean art of 'Tang Soo Do' take place on Monday and Wednesday nights at Warmley and Mangotsfield. Mixed gender classes also available at Kingswood and Whitchurch.

For further information: e-mail: Victoria.Evins@uwe.ac.uk or tel: 07773 345407

**For sale – BMW** taxed and new MOT with service history, five new tyres, twin sunroof, alloy wheels, electric windows and mirrors. £2600 ono contact 0117 9690404.

**To let** - Large furnished room in Cotham in a family home close to Whiteladies Road. A good-sized furnished room with desk and TV has access to its own shower room and a family bathroom. Good bus routes to UWE nearby. Would suit non-smoker. £250pcm including bills except telephone. If interested contact Antony Beckett Antony.Beckett@uwe.ac.uk or on extension 83452.

**Chalet to let** - Bideford Bay Holiday Park, Nr Devon, fully furnished 2 bedroom chalet including bathroom with shower, TV/DVD/CD player, fridge, microwave, cooker/hob and all other comforts of home. Ideally situated between Devon and Cornwall available for 2006 at 2005 prices. Tel 0777 962 3958 or see: www.bidefordbaychalets.co.uk.

**Converted 16th Century Barn** in lovely countryside outside Barnstaple. Sleeps 2+2. Pets welcome. £350 per week to UWE students and staff. Contact: Professor Grace Dorey 01271 321721

**To let** - Luxury Spanish Apartment – Los Alcazares, Mar Menor, Costa Calida  
Modern, air conditioned apartment, 2 double bedrooms, 2 bathrooms. Fully fitted kitchen, lounge/dining room with balcony overlooking lovely communal pool and separate children's pool. Walking distance of supermarkets, restaurants and a safe sandy beach skirting the warm lagoon of Mar Menor - ideal for children and water sports. The nearby towns of Torre Vieja and La Manga, the historic cities of Murcia and Cartagena, along with seven golf courses are no more than a 20 min drive away. Accessed by two airports: Alicante (50 min drive) and San Javier, Murcia Airport (10 min drive). For further information please see <http://www.spanishapartmentholidays.com>, email: [enquiries@spanishapartmentholidays.com](mailto:enquiries@spanishapartmentholidays.com) Or call Jamie on: 07818037151 or 0117 9476116

## RWA Collection - Acquisitions 1990-1999

14 April 2006 - 18 June 2006  
(Mon - Sat 10.00-17.30; Sun 14.00-17.00)  
Milner Gallery, RWA, Queen's Road, Clifton

Selected works acquired by the Academy from 1990 to 1999.

Contact: Royal West of England Academy  
Telephone: 0117 973 5129  
E-mail: [info@rwa.org.uk](mailto:info@rwa.org.uk)  
Visit: [www.rwa.org.uk](http://www.rwa.org.uk)

## Art of Stitch

14 May 2006 - 18 June 2006  
(Mon - Sat 10.00-17.30; Sun 14.00-17.00)  
RWA, Queen's Road, Clifton, Bristol

Admission: £3.00 - UWE BSAMD students and staff free

Contact: Royal West of England Academy  
Telephone: 0117 973 5129  
E-mail: [info@rwa.org.uk](mailto:info@rwa.org.uk)  
Visit: [www.rwa.org.uk](http://www.rwa.org.uk)

## Tourism sights and sites: icons of place promotion and regeneration

31 May 2006 (15.00)  
Dr Tim Hall, University of Gloucestershire and Dr Ann-Marie O'Sullivan, UWE  
2R003 Frenchay Campus

Admission: Free  
Contact: Jane Newton  
Telephone: 0117 32 83102  
E-mail: [Jane.Newton@uwe.ac.uk](mailto:Jane.Newton@uwe.ac.uk)

## INCOSE UK Chapter - Bristol Local Group "A380 - 12 Months On"

31 May 2006 (18.00)  
Lecture Theatre 1N5, Frenchay Campus

Admission: Free  
Contact: Terry Winnington  
Telephone: 0117 32 82156  
E-mail: [terry.winnington@uwe.ac.uk](mailto:terry.winnington@uwe.ac.uk)

## Hartpury College Open Day

3 June 2006 (10.00-16.00)

Hartpury College, Gloucester GL19 3BE  
Contact: Hartpury College  
Telephone: 01452 702132  
E-mail: [enquire@hartpury.ac.uk](mailto:enquire@hartpury.ac.uk)  
Visit: [www.hartpury.ac.uk](http://www.hartpury.ac.uk)

## Centre for Performing Arts Prizegiving Ceremony

5 June 2006 (19.30)  
RWA, Queen's Road, Clifton, Bristol

Admission: Invitation only  
Contact: Centre for Performing Arts  
Telephone: 0117 32 82067  
E-mail: [cpa@uwe.ac.uk](mailto:cpa@uwe.ac.uk)  
Visit: [www.uwe.ac.uk/cpa](http://www.uwe.ac.uk/cpa)

## Appearance Matters 2: Developing Theory and Practice

6 June 2006 - 07 June 2006  
The Centre for Appearance Research (UWE) and the British Psychological Society  
The Assembly Rooms and Guildhall, Bath

Contact: Dr Diana Harcourt  
Telephone: 0117 32 82192  
E-mail: [diana2.harcourt@uwe.ac.uk](mailto:diana2.harcourt@uwe.ac.uk)  
Visit: [www.uwe.ac.uk/fas/car](http://www.uwe.ac.uk/fas/car)

## Staging Identity: Theatre, Sexuality and Gender

7 June 2006 (18.30)  
Centre for Critical Theory presents  
Dr Pamela Karantonis and Dr Andrew Wyllie, Drama Lecturers, UWE  
Watershed Media Centre, Bristol

Admission: £2.50 (concessions £2.00)  
Contact: Watershed Media Centre Box Office  
Telephone: 0117 927 5100  
E-mail: [cct@uwe.ac.uk](mailto:cct@uwe.ac.uk)  
Visit: [www.uwe.ac.uk/research/centres/cct/forthcoming.shtml](http://www.uwe.ac.uk/research/centres/cct/forthcoming.shtml)

## Sisterly Feelings by Alan Ayckbourn

8 June 2006 - 17 June 2006 (19.30)  
Bristol Old Vic Theatre School  
Main House, Theatre Royal, King St, Bristol

Admission: Tickets £8, £12 (concs £5, £7)  
Contact: Bristol Old Vic Box Office  
Telephone: 0117 987 7877  
Visit: <http://www.bristol-old-vic.co.uk>

## Under Milk Wood by Dylan Thomas

8 June 2006 - 17 June 2006 (19.30)  
Bristol Old Vic Theatre School  
The Studio, Theatre Royal, King St, Bristol

Admission: Tickets £10 (concessions £7)  
Contact: Bristol Old Vic Box Office  
Telephone: 0117 987 7877  
Visit: [www.bristol-old-vic.co.uk](http://www.bristol-old-vic.co.uk)

## The State of the Environment in the South West

13 June 2006 (16.00-18.30)  
Lecture Theatre 2B025, Frenchay Campus

Admission: £10  
Contact: Laura Collier  
Telephone: 0117 32 83333  
E-mail: [laura2.collier@uwe.ac.uk](mailto:laura2.collier@uwe.ac.uk)

## National Blind Childrens Society Annual Golf Day

14 June 2006  
Isle of Wedmore Golf Club, Wedmore, Somerset

Admission: £240 per team of 4  
Contact: Tania Jones  
Telephone: 01278 764777

## Undergraduate Open Day

14 June 2006 (10.00-16.00)  
All UWE campuses

Contact: Admissions and International Recruitment  
Telephone: 0117 32 83333  
E-mail: [open@uwe.ac.uk](mailto:open@uwe.ac.uk)  
Visit: [www.uwe.ac.uk/aboutUWE/openday](http://www.uwe.ac.uk/aboutUWE/openday)

## Involving young people in injury prevention research and practice

16 June 2006 (9.30-11.00)  
Richard Kimberlee and Elizabeth Towner  
Centre for Child and Adolescent Health, Bristol

Admission: Free  
Contact: Di Hynam, University of Bristol  
Telephone: 0117 331 0893  
E-mail: [D.Hynam@bristol.ac.uk](mailto:D.Hynam@bristol.ac.uk)  
Visit: [hsc.uwe.ac.uk/hsc/newsevents.asp](http://hsc.uwe.ac.uk/hsc/newsevents.asp)

## Degree and MA Show

17 June 2006 - 20 June 2006  
Bower Ashton Campus

Admission: Free  
Contact: Art, Media and Design  
Telephone: 0117 32 84716  
E-mail: [amd.enquiries@uwe.ac.uk](mailto:amd.enquiries@uwe.ac.uk)  
Visit: [www.uwe.ac.uk/amd/index.asp?pageid=203](http://www.uwe.ac.uk/amd/index.asp?pageid=203)

## Relational Thinking

17 June 2006 - 18 June 2006  
Paul Hoggett, Simon Clarke and Herbert Hahn  
UWE, Frenchay Campus

Admission: £165.00 (concessions £83.00)  
Contact: Rose West  
E-mail: [rose.west@uwe.ac.uk](mailto:rose.west@uwe.ac.uk)  
Visit: [www.uwe.ac.uk/research/centres/pss/index.shtml](http://www.uwe.ac.uk/research/centres/pss/index.shtml)

## Postgraduate Study Open Evening for Art, Media and Design

19 June 2006 (16.00-20.00)  
Bower Ashton Campus, UWE

Contact: Catherine Coombe  
Telephone: 0117 32 84716  
E-mail: [catherine.coombe@uwe.ac.uk](mailto:catherine.coombe@uwe.ac.uk)  
Visit: [www.uwe.ac.uk/amd/index.asp?pageid=199](http://www.uwe.ac.uk/amd/index.asp?pageid=199)

## Moll Flanders by Daniel Defoe

21 June 2006 - 24 June 2006 (19.30)  
Bristol Old Vic Theatre School  
Bristol Old Vic Studio, Theatre Royal, Bristol

Admission: Tickets £10 (concessions £7)  
Contact: Bristol Old Vic Box Office  
Telephone: 0117 987 7877  
Visit: [www.bristol-old-vic.co.uk](http://www.bristol-old-vic.co.uk)

## The Alternative Series 2006 - A Crisis of Multiculturalism or of Britishness?

21 June 2006 (19.00)  
Centre for Critical Theory presents  
Professor Tariq Madood  
Watershed Media Centre, Bristol

Admission: £6.00 (£4.50 concessions)  
Contact: Watershed Media Centre Box Office  
Tel: 0117 927 5100 E-mail: [cct@uwe.ac.uk](mailto:cct@uwe.ac.uk)  
Visit: [www.uwe.ac.uk/research/centres/cct/forthcoming.shtml](http://www.uwe.ac.uk/research/centres/cct/forthcoming.shtml)

## Single Women in History, 1000-2000

23 June 2006 - 24 June 2006 (10.00 onwards)  
West of England and South Wales Women's History Network  
St Matthias Campus, UWE

Admission: £60 full waged, £40 members, £30 concessions  
Contact: Pat Diango Tel: 0117 328 4307  
E-mail: [P.Diango@uwe.ac.uk](mailto:P.Diango@uwe.ac.uk)  
Visit: [humanities.uwe.ac.uk/swhisnet/swhisnet.htm](http://humanities.uwe.ac.uk/swhisnet/swhisnet.htm)

## Aimhigher South West - Celebrating Success

23 June 2006 (10.00-16.00)  
Frenchay Campus, UWE

Keynote speaker: Dawn Primarolo  
Contact: Ellie Farley Tel: 0117 32 82357  
E-mail: [eleanor.farley@uwe.ac.uk](mailto:eleanor.farley@uwe.ac.uk)