



**WHO / UNICEF**

**Joint Monitoring Programme  
for Water Supply and Sanitation**

Coverage Estimates

**Improved Drinking Water**

Updated in June 2006

---

**Mexico**

---

## Urban and Rural Water Mexico

<b>Conteo</b>		<b>1995</b>	
<b>Water</b>	<b>Urban</b>	<b>Rural</b>	
Dentro de la vivienda	43'537.8	3'313.2	
Dentro del terreno	17'665.1	10'739.1	
Llave publica o hidrante	811.5	672.2	
Total with improved water	63'420.8	17'229.6	
Total population	67'003.5	24'154.7	
Estimated proportion of wells and rainwater based on WHS03	1'406.4	2'505.1	
<b>Access to improved drinking water source</b>	<b>95%</b>	<b>71%</b>	
% House connections	91%	58%	

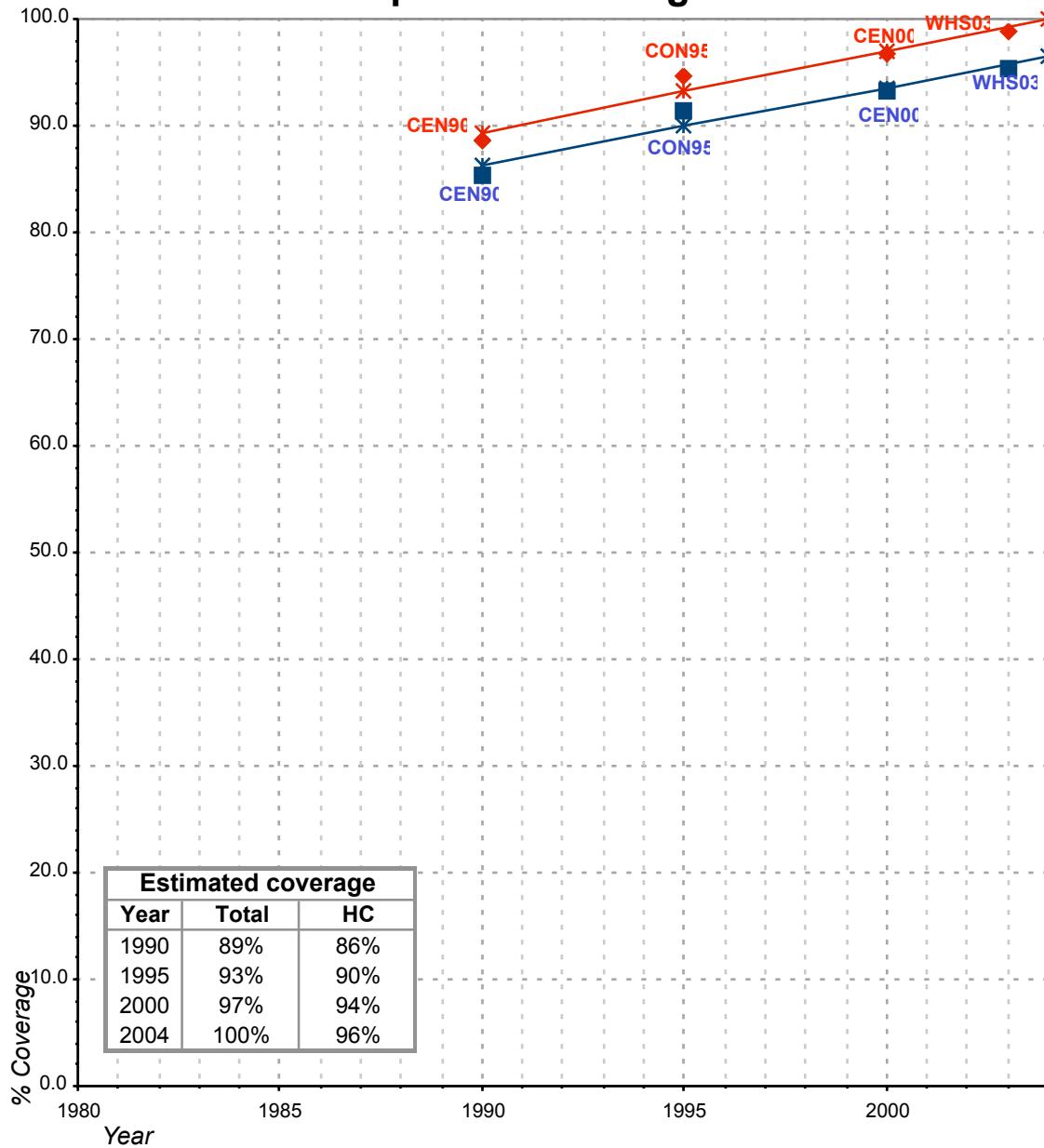
*Conteo de Poblacion, noviembre de 1995*

<b>WHS</b>		<b>2003</b>	
<b>WATER</b>	<b>Urban</b>	<b>Rural</b>	
Piped water through house connection or yard	95.3	72.3	
Public standpipe	1.3	1.3	
Protected tube well or bore hole	1.5	8.0	
Protected dug well or protected spring	0.7	4.0	
Rainwater (into tank or cistern )	0.1	0.5	
Unprotected dug well or spring	0.4	3.1	
Water taken directly from pond-water or stream	0.1	9.0	
Tanker-truck, vendor	0.8	1.9	
TOTAL	100.0	100.0	
ratio of protected wells and rainwater vs HHC	0.02	0.17	
Ratio of protected /all wells and springs	0.86	0.80	
<b>Access to improved drinking water sources</b>	<b>99%</b>	<b>86%</b>	
<b>% House connections</b>	<b>95%</b>	<b>72%</b>	

*Source: World Health Survey, WHO, 2003.*

Mexico			DRINKING WATER							
			URBAN				RURAL			
			HC		Total		HC		Total	
Source	Code	Year	Used for estimates	Not used for estimates	Used for estimates	Not used for estimates	Used for estimates	Not used for estimates	Used for estimates	Not used for estimates
The International Drinking Water Supply and Sanitation Decade. Review of National Baseline Data (as at December 1980). WHO 1984	WHO80	1980		62.0		64.0				43.0
The International Drinking Water Supply and Sanitation Decade. Review of National Progress (as at December 1983). WHO 1986.	WHO83	1983		62.0		91.0				40.0
The International Drinking Water Supply and Sanitation Decade. Review of Mid-Decade Progress (as at December 1985). WHO 1987.	WHO85	1985		48.0		79.0				51.0
The International Drinking Water Supply and Sanitation Decade. Review of National Progress (as at December 1988). WHO 1990.	WHO88	1987		50.0		79.0				49.0
The International Drinking Water Supply and Sanitation Decade. End of Decade Review (as at December 1990). WHO1992.	WHO90	1990		89.0		94.0				
Censo General de Poblacion y Vivienda, marzo de 1990	CEN90	1990	85.4		88.5		52.9		64.8	
Water Supply and Sanitation Sector Monitoring Report 1993 (Sector Status as of 31 December 1991)	JMP93	1991				81.0				68.0
Water Supply and Sanitation Sector Monitoring Report - 1996. Sector Status as of 31 December 1994. WHO/UNICEF 1996.	JMP96	1993				91.0				62.0
	SWS94	1994								
Conteo de Poblacion, noviembre de 1995	CON95	1995	91.3		94.7		58.2		71.3	
Comision Nacional del Agua, 1996	CNA96	1996				93.0				62.0
Comision Nacional del Agua, 1997	CNA97	1997				94.0				63.0
Comision Nacional del Agua (1999).Situacion del Subsector Agua Potable, Alcantarillado y Saneamiento: A Diciembre de 1998	CNA98	1998				94.4				64.5
Global Water Supply and Sanitation Assessment 2000. Water Supply and Sanitation Sector Questionnaire - 1999. (Form 6 sent to WHO)	JMP99	1998		93.0		94.0		62.0		64.0
Comision Nacional del Agua (1999).Situacion del Subsector Agua Potable, Alcantarillado y Saneamiento: A Diciembre de 1998, <b>Preliminary results</b>	CNA99	1999				95.0				68.0
Censo General de Poblacion y Vivienda, febrero 2000	CEN00	2000	93.3		96.7		64.9		79.6	
World Health Survey, WHO, 2003.	WHS03	2003	95.3		98.8		72.3		86.1	

# Mexico - urban - Access to improved drinking water sources



**Total improved access**

**Household connections (HC)**

◆ Used for estimates

■ Used for estimates

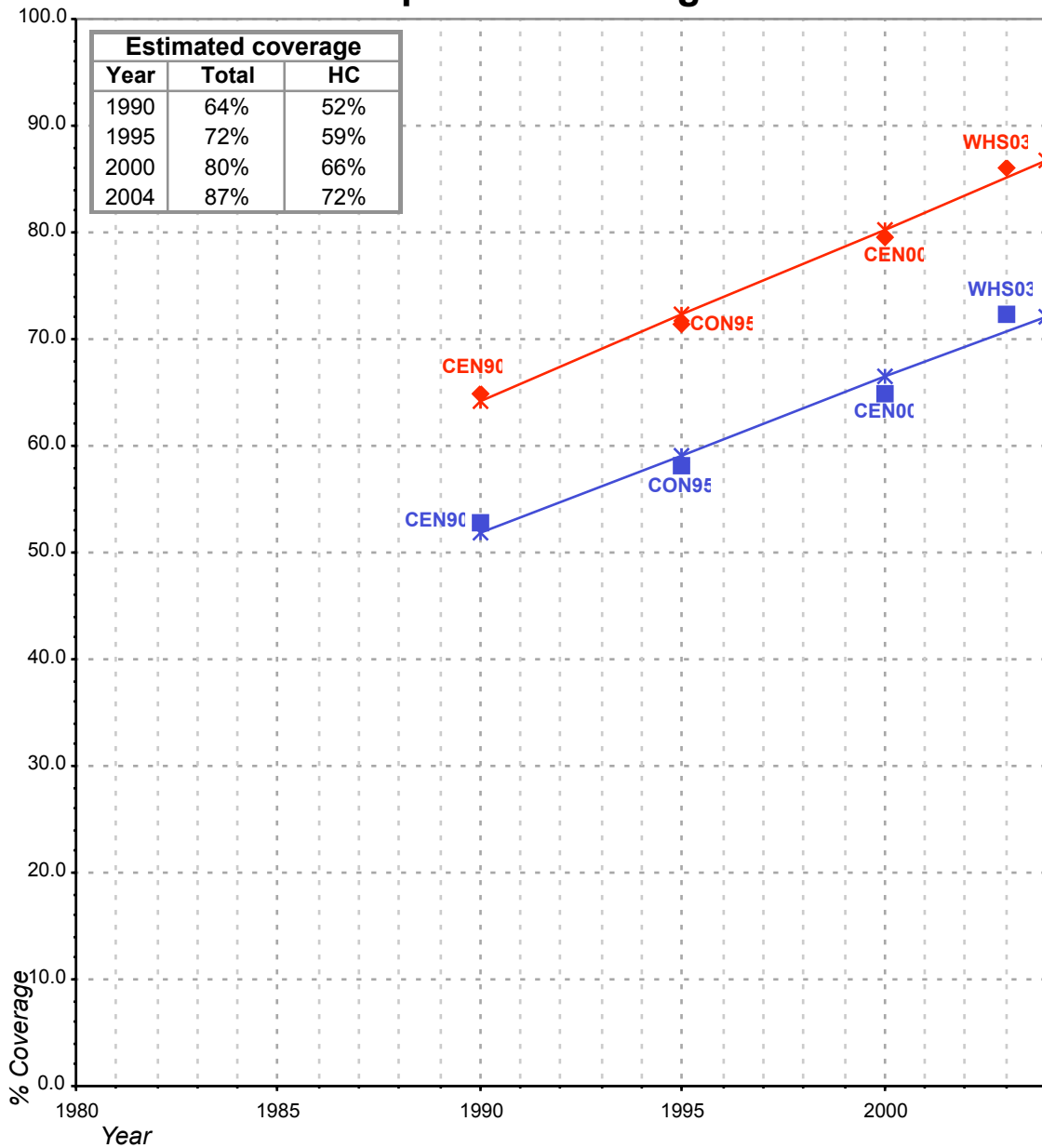
—\*— Estimates

—\*— Estimates

Total access :

Household connections :

# Mexico - rural - Access to improved drinking water sources



**Total improved access**

**Household connections (HC)**

◆ Used for estimates

■ Used for estimates

✱ Estimates

✱ Estimates

**Total access :** CNA data have not been used because they contain no information on wells.

**Household connections :**