

# AMT Instruction Manual



# AUTOMAG V

SEMIAUTOMATIC  
.50 CALIBER



Arcadia Machine & Tool, Inc. — 6226 Santos Diaz, Irwindale, CA 91702

# AUTOMAG V .50 CALIBER SEMIAUTOMATIC GENERAL FEATURES

OVERALL LENGTH - 10 3/4 inches, WIDTH - 1 3/8 inches  
COMPLETE PISTOL WEIGHT WITH 6 1/2" BARREL - 46 OUNCES

## STATEMENT OF NON LIABILITY

### WARNING:

This pistol is classified as a dangerous weapon and is surrendered by **AMT** with the understanding that the purchaser assumes all liability resulting from unsafe handling or any action that constitutes a violation of any applicable laws or regulations. **AMT** shall not be liable for personal injury or loss of property or life resulting from the use of this pistol under any circumstances, including intentional, reckless, negligent or accidental discharge.

Further, **AMT** will not be liable for any alterations to the pistol or any parts thereof. **AMT** will not condone or authorize any changes to be made after the pistol has left the factory. If your **AMT** pistol is in need of service or adjustment, follow the instructions in this manual under the section marked "SERVICE."

Please read the warnings in this manual carefully. Be sure you understand the functions of this pistol before loading and firing it. Carefully read the "SAFETY" section of this manual. Exercise safe handling of this pistol at all times.

### PLEASE BE CAREFUL!

**WARNING: NEVER USE AMMUNITION WHERE THE PRESSURE LEVELS EXCEED INDUSTRY STANDARDS. THE USE OF RELOADED AMMUNITION WILL VOID THE WARRANTY AND INJURY MAY VERY WELL RESULT.**

**WARRANTY VOID IF OTHER THAN FACTORY AMMUNITION IS USED.**

**USE ONLY FACTORY AMMUNITION!**

**NOTE ON AMMUNITION AND MAGAZINES:** Today there exists a variety of .50 caliber ammunition from which to choose. Some brands vary greatly in dimensions and bullet configurations. Your **AMT .50 Caliber Semiautomatic AUTOMAG V** is designed to function with factory standard ammunition. Use only new .50 caliber ammunition manufactured by a reputable and established company. **DO NOT USE RELOADED AMMUNITION.**

Wear Safety Glasses and Ear Protection at all times when shooting!

## THE BASIC RULES OF SAFE FIREARMS HANDLING

**1. LEARN THE MECHANICAL AND HANDLING CHARACTERISTICS OF THE FIREARM YOU ARE USING.** Not all firearms are the same. The method of carrying and handling firearms varies in accordance with the mechanical provisions for avoiding accidental firing and the various proper procedures for loading and unloading. Do not handle any firearm without first having thoroughly familiarized yourself with the particular type of firearm you are using and with safe gun handling procedures in general.

**2. ALWAYS KEEP THE FIREARM POINTED IN A SAFE DIRECTION.** A safe direction means a direction which will not permit a discharged bullet to strike a person, or to strike an object from which the bullet may ricochet. A safe direction must take into account the fact that a bullet may penetrate a wall, ceiling, floor, window, etc., and strike a person or damage property. Be sure of a safe bullet stop behind your target even when operating the firearm without ammunition (dry-firing). Never let the muzzle of a firearm point at any part of your body or at another person. This is particularly important when loading or unloading a firearm. In the event of accidental firing, no injury can occur as long as the muzzle is pointing in a safe direction.

**3. NEVER PLACE YOUR FINGER ON THE TRIGGER UNLESS YOU ARE READY TO SHOOT.** Make it a habit to know exactly where the muzzle of your gun is pointing whenever you handle it and be sure that you are always in control of the direction in which the muzzle is pointing even if you fall or stumble. When receiving or handling a firearm, always point the muzzle in a safe direction, open the action, and check the chamber to ensure the firearm is not loaded even if you have just watched others check that firearm. When operating a firearm's safety, point the muzzle in a safe direction and do not place your finger on the trigger.

**4. ENSURE FIREARMS ARE UNLOADED WHEN NOT IN USE.** Load your firearm only when you are in the field or on the target range or shooting area, ready to shoot. Lock firearms and ammunition securely in racks or cabinets when not in use. Store ammunition safely, separate from firearms. Store your firearms out of sight of visitors and out of sight and reach of children. The gun owner is responsible for ensuring that children and persons unfamiliar with firearms cannot gain access to firearms or ammunition.

**5. BE SURE THE BARREL IS CLEAR OF OBSTRUCTIONS BEFORE SHOOTING.** Even a bit of mud, snow, or excess lubricating oil or grease in the bore may cause the barrel to bulge, or even burst on firing, and can cause injury to the shooter and bystanders. If you are not sure the barrel is clear, do not shoot the firearm. Be sure that you are using ammunition of the proper caliber and loading for the gun you are using. Improper ammunition can cause blockage or bursting of the firearm's barrel. If the report (sound of firing) or recoil on firing seems weak or doesn't seem quite right -- CEASE FIRING IMMEDIATELY -- and check to be sure that nothing has become lodged in the barrel.

**6. BE SURE OF YOUR TARGET BEFORE YOU SHOOT.** Don't shoot unless you know exactly where your bullet is going to strike. Don't point the firearm at anything you do not wish to shoot. Be sure of a safe bullet stop behind your target even when dry-firing with an unloaded gun. If you are in the field hunting, do not fire at a movement or noise. Take the time to be absolutely certain of your target visually before you pull the trigger. Handle

**Wear Safety Glasses and Ear Protection at all times when shooting!**

all firearms as if they were loaded and ready to fire. Disengage the firearm's safety only when the firearm is pointed in a safe direction and you are ready to shoot.

**7. DO NOT CARRY FIREARMS WITH AMMUNITION IN THE CHAMBER.** A firearm with a round in the chamber is ready to fire and may be caused to fire by unforeseen events. Never rely on any safety device to prevent a firearm from discharging.

**8. WEAR SHOOTING GLASSES AND HEARING PROTECTORS WHEN YOU SHOOT.** All shooters should wear protective shooting glasses and some form of hearing protectors when shooting or in the company of shooters. Exposure to shooting noise can damage hearing. Adequate vision protection when shooting is essential. Normal prescription eyeglasses and commercial sunglasses do not provide adequate protection.

**9. NEVER CLIMB A TREE OR FENCE WITH A LOADED FIREARM.** Put the firearm in a secure holster before climbing a fence. Unload the firearm before climbing or descending a tree or jumping over a ditch or other obstruction. Never pull or push a loaded firearm toward yourself or another person. When in doubt, unload your gun!

**10. DON'T SHOOT AT A HARD SURFACE, OR AT WATER.** Bullets can ricochet off many surfaces like rocks or the surface of water and travel in unpredictable directions with damaging or lethal velocity.

**11. NEVER TRANSPORT A LOADED FIREARM.** Always unload firearms before placing them in a vehicle. A suitable carrying case or holster should be used to carry a firearm to and from the shooting areas.

**12. DO NOT CONSUME ALCOHOLIC BEVERAGES WHEN SHOOTING.** Handling firearms while under the influence of alcohol, medication, or mind altering substances in any form constitutes a criminal disregard for the safety of others.

## **AUTOMAG V SAFETY**

As is the case in all firearms, the AUTOMAG V pistol must be used with the strictest attention to the basic rules of firearms safety. Pistols are equipped with a manual safety to provide maximum mechanical security against accidental discharge.

**WARNING: THE HALF-COCK POSITION OF THE HAMMER IS NOT A MANUAL SAFETY. IT PROVIDES PROTECTION AGAINST ACCIDENTAL DISCHARGE CAUSED BY MISOPERATION OF THE SLIDE OR FAILURE OF THE FULL COCK NOTCH. NEVER CARRY THE PISTOL WITH THE HAMMER AT HALF-COCK.**

*NOTE: The half-cock position prevents the hammer from striking the firing pin should your hand slip from the slide or hammer while cocking the pistol, or in the event of a failure of the full-cock notch.*

**WARNING: THE AUTOMAG V PISTOL WILL OPERATE WITH THE MAGAZINE REMOVED. NEVER LEAVE A ROUND OF AMMUNITION IN THE CHAMBER OF THE PISTOL.**

Wear Safety Glasses and Ear Protection at all times when shooting!



**WARNING: THE .50 CALIBER AUTOMAG V HAS SIGNIFICANT RECOIL AND MUST BE HELD WITH A FIRM TWO-HAND GRIP AT FULL ARMS LENGTH FOR FIRING.**

1. **NEVER PLACE YOUR FINGER ON THE TRIGGER UNLESS YOU ARE READY TO SHOOT.** The AUTOMAG V pistol is semi-automatic firearm and, once loaded and cocked, will fire every time the trigger is pulled. The pistol will fire WITH or WITHOUT a magazine in place. Removing the magazine does not remove a chambered round of ammunition.
2. **ALWAYS KEEP THE FIREARM POINTED IN A SAFE DIRECTION.** A safe direction means a direction which will not permit a discharged bullet to strike a person, or to strike an object from which the bullet may ricochet. Never let the muzzle of a firearm point at any part of your body or at another person. This is particularly important when loading or unloading a firearm.
3. **UNLOAD FIREARMS WHEN THEY ARE NOT IN USE.** Load your firearm only when you are in the field or on the target range or shooting area, ready to shoot. Lock firearms and ammunition securely in racks or cabinets when not in use. Store ammunition safely, separate from firearms. Store your firearms out of sight of visitors and out of sight and reach of children. The gun owner is responsible for ensuring that children and persons unfamiliar with firearms cannot gain access to firearms or ammunition.
4. **DO NOT CARRY THE PISTOL WITH AMMUNITION IN THE CHAMBER.** Use extreme caution when carrying the AUTOMAG V pistol.
5. **DON'T USE RELOADED OR QUESTIONABLE AMMUNITION.** Use only new .50 caliber ammunition manufactured by a reputable and established company. Reloaded and surplus-market ammunition may exceed the industry pressure level standards for .50 caliber ammunition.
6. **DO NOT ALTER OR MODIFY THE PISTOL.** If the firearm fails to fire, handle the pistol with extreme caution. Refer to SERVICE in this instruction manual.

**Wear Safety Glasses and Ear Protection at all times when shooting!**

7. **PROTECT YOUR HEARING AND SIGHT.** Wear adequate safety glasses and hearing protection when using the AUTOMAG V pistol.

8. **NEVER LEAVE A LOADED FIREARM UNATTENDED.** Always store the pistol, unloaded, in a safe and secure location inaccessible by children. All ammunition should be stored in a separate secure location.

9. **DO NOT CONSUME ALCOHOLIC BEVERAGES WHEN SHOOTING.** Handling firearms while under the influence of alcohol, medication, or mind altering substances in any form constitutes a criminal disregard for the safety of others.

## SAFETY OPERATION

In the safe position, shown in Figure 2, the thumb safety stops the hammer from contacting the firing pin and also blocks the firing pin. The safety does not stop the hammer from falling when the trigger is pulled. Figure 1 shows the thumb safety in the off or fire position.

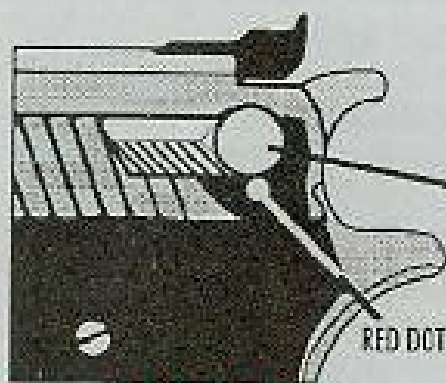


Figure 1. SAFETY OFF

THUMB  
SAFETY  
LATCH

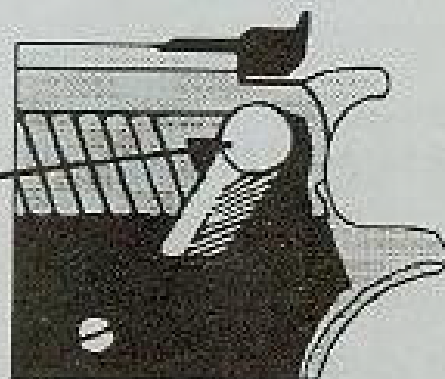


Figure 2. SAFETY ON

**WARNING: NEVER DEPEND ON ANY SAFETY MECHANISM OR ANY MECHANICAL DEVICE. USE OF SAFETY MECHANISMS AND DEVICES DOES NOT JUSTIFY CARELESS HANDLING OR POINTING THE PISTOL IN AN UNSAFE DIRECTION.**

**WARNING: THE AUTOMAG V PISTOL IS AN AUTOMATIC LOADING PISTOL. THE PISTOL IS IMMEDIATELY LOADED AND READY TO FIRE AGAIN AFTER EACH SHOT UNTIL ALL ROUNDS OF AMMUNITION IN THE MAGAZINE AND CHAMBER HAVE BEEN FIRED.**

**WARNING: THE AUTOMAG V PISTOL WILL FIRE EVEN WHEN THE MAGAZINE HAS BEEN REMOVED FROM THE PISTOL. REMOVING THE MAGAZINE DOES NOT UNLOAD THE PISTOL'S CHAMBER OR ENGAGE THE SAFETY. REFER TO SAFETY OPERATION AND UNLOADING SECTIONS OF THIS MANUAL.**

**WARNING: DO NOT LOAD AMMUNITION INTO THE PISTOL OR ATTEMPT FIRING THE PISTOL UNTIL YOU HAVE READ THIS MANUAL COMPLETELY.**

Wear Safety Glasses and Ear Protection at all times when shooting!

## TO LOAD THE PISTOL

**WARNING: OBSTRUCTIONS IN THE BARREL CAN CAUSE SERIOUS INJURY TO THE SHOOTER AND DAMAGE THE PISTOL. ENSURE THE BORE IS CLEAN AND DOES NOT SHOW EXCESSIVE LUBRICANT DEPOSITS.**

**WARNING: CARTRIDGES MUST BE FED FROM THE MAGAZINE. DO NOT LOAD AMMUNITION DIRECTLY INTO THE PISTOL'S CHAMBER.**

1. While ensuring the pistol is pointing in a safe direction, place the thumb safety in the "SAFE" position. (When positioned in the "SAFE" position, the RED DOT will NOT be visible, Figure 2.)
2. Press the magazine latch to the right and release the magazine. Remove the magazine from the pistol.
3. While ensuring the pistol is pointing in a safe direction, draw the slide back forcefully to extract any round which may have been in the chamber. Visually check to ensure there is not a round in the chamber; then lower the slide to its forward position.
4. With the pistol still pointed in a safe direction, lower the hammer by holding the hammer with thumb and pulling the trigger. Ease the hammer down until it contacts the safety.

**WARNING: USE ONLY CLEAN AMMUNITION. AMMUNITION WITH DIRT, LINT, CORROSION, OR LUBRICANT DEPOSITS CAN CAUSE THE PISTOL TO MALFUNCTION.**

5. Carefully press rounds of ammunition into the magazine. Ensure all cartridges lie evenly and are parallel to the magazine tube.

**WARNING: DO NOT FORCE THE MAGAZINE INTO PLACE AS THIS ACTION CAN DAMAGE THE FEED LIPS AND IMPAIR FEEDING.**

6. Insert the magazine into the pistol and ensure the magazine latch locks the magazine in place. (If the magazine does not lock in place readily, remove the magazine and ensure all cartridges are positioned properly in the magazine tube. When all cartridges are positioned properly, re-insert the magazine.)

## TO FIRE THE PISTOL

**WARNING: THE HALF-COCK POSITION OF THE HAMMER IS NOT A SAFETY. DO NOT CARRY THE PISTOL WITH THE HAMMER IN THE HALF-COCK POSITION.**

**WARNING: KEEP YOUR FINGER OFF THE TRIGGER UNTIL THE PISTOL IS POINTED AT THE INTENDED TARGET AND IN A SAFE DIRECTION.**

**WARNING: PROTECT YOUR HEARING AND EYESIGHT. WEAR ADEQUATE HEARING PROTECTION AND SAFETY GLASSES WHEN FIRING THE PISTOL.**

Wear Safety Glasses and Ear Protection at all times when shooting!

1. Keep your finger off the trigger and point the pistol in a safe direction. Hold the pistol in your shooting hand. (Operating the slide in other than a positive manner may cause a misfeed and/or jam in the pistol.)

2. With the pistol pointed at the intended target (and in a safe direction), push slide stop down with your thumb to release the slide. Move the thumb safety to the "FIRE" position as shown in Figure 1. The pistol is now ready to fire.

**WARNING: THE .50 CALIBER AUTOMAG V HAS VERY HEAVY RECOIL AND MUST BE HELD WITH A FIRM TWO-HAND GRIP AT FULL ARMS LENGTH FOR FIRING. THE AUTOMAG V MUST BE FIRED ONLY BY ADULTS WHO HAVE EXPERIENCE IN FIRING HEAVY RECOIL HANDGUNS.**

3. With the pistol pointed at the intended target (and in a safe direction), squeeze the trigger to fire the round in the chamber. *When the round has fired, the expended cartridge will be ejected and another round automatically loaded into the chamber from the magazine.* If the next round is not to be fired immediately, return the thumb safety to the "SAFE" position until you are ready to fire again.

4. After firing the last shot, the slide stop will hold the slide in the open position. **VISUALLY EXAMINE THE CHAMBER TO ENSURE IT IS EMPTY!**

## TO CLEAR A JAM

**WARNING: DO NOT FORCE THE SLIDE SHUT IF A ROUND MISFEEDS OR JAMS. ENSURE THE PISTOL REMAINS POINTED IN A SAFE DIRECTION.**

1. With the pistol pointed in a safe direction and your finger off of the trigger, engage the thumb safety.

2. Press the magazine latch to the right to release the magazine and remove the magazine from the pistol.

**WARNING: DO NOT LOOK INTO THE CHAMBER DURING THIS OPERATION.**

3. While ensuring the pistol is pointed in a safe direction and keeping your finger off of the trigger, pull the slide to its rear-most position and lock it by pushing up on the slide stop.

4. If the jammed round was not ejected by pulling back the slide, use a small wood or plastic rod (sharpened on the working end) to gently remove the cartridge from the chamber. **DO NOT USE A METAL TOOL.**

5. When the jammed round has been removed, carefully inspect the pistol to ensure a round did not lodge in the magazine well of the grip frame.

6. Inspect the magazine for proper ammunition loading prior to reinserting into pistol.

Wear Safety Glasses and Ear Protection at all times when shooting!



## TO UNLOAD THE PISTOL

Follow this procedure exactly to unload the pistol.

### FINAL ROUND FIRED

1. If the last shot in the magazine has been fired, the slide should be locked in the open position.
2. With the pistol pointed in a safe direction, place the thumb safety in the "SAFE" position, Figure 2.
3. Press the magazine latch to the right to release magazine and remove magazine from pistol.
4. Visually examine chamber and magazine to ensure they are empty.
5. Pull the slide to its rearmost position which will disengage the slide stop. Slowly return slide to its forward position.
6. With the pistol pointed in a safe direction, hold hammer with thumb and pull trigger while easing hammer down until it contacts the safety.

### ALL ROUNDS HAVE NOT BEEN FIRED

1. With the pistol pointed in a safe direction, place the thumb safety in the "SAFE" position, Figure 2.
2. Press the magazine latch to the right to release magazine and remove magazine from pistol.
3. With the pistol pointed in a safe direction, forcibly pull the slide to its rearmost position which will extract and eject the chambered round from the pistol. **DRAWING THE SLIDE BACK SLOWLY MAY RESULT IN THE ROUND LODGING IN THE MAGAZINE WELL OF THE GRIP FRAME.**
4. Visually inspect the chamber and, when you are sure the pistol is empty, lower the slide to its forward position.
5. With the pistol pointed in a safe direction, hold hammer with thumb and pull trigger while easing hammer down until it contacts the safety.

**Wear Safety Glasses and Ear Protection at all times when shooting!**

## TO DISASSEMBLE THE PISTOL

**WARNING: ENSURE PISTOL IS UNLOADED BEFORE ATTEMPTING DISASSEMBLY. REFER TO SECTION TITLED "TO UNLOAD THE PISTOL".**

1. Refer to section titled "TO UNLOAD THE PISTOL". Remove magazine and visually inspect chamber to ensure the pistol is empty.
2. Pull the slide to the rear approximately 1 inch, then push slide stop out to the left. Slide will then come forward off of the frame.

**CAUTION: Do not let hammer fall without slide in place. this will cause damage to the hammer strut.**

**WARNING: TAKE CARE IN RELEASING THE TENSION ON SPRING-LOADED PARTS TO PREVENT PERSONAL INJURY OR DAMAGE TO PARTS.**

3. To remove barrel from slide, depress recoil rod bushing to clear barrel bushing. Rotate barrel bushing counterclockwise 45° and the recoil rod and spring will come out of the slide.
4. Barrel can now be removed from the bottom of the slide so that slide and barrel can be cleaned.
5. **DO NOT DISASSEMBLE FRAME/GRIP PARTS.** If the components within the grip frame need service for any reason, return the pistol to the factory. See SERVICE section of this manual for instructions.

## TO ASSEMBLE THE PISTOL

1. Install barrel into slide through the bottom of slide.
2. Attach barrel bushing so that it is rotated counterclockwise 45°.
3. Insert recoil rod and spring. With the recoil rod bushing on the recoil spring, compress spring until recoil rod bushing is flush with the front of the slide.
4. Install barrel bushing until it is fully against slide and rotate clockwise to locked position.
5. Cock hammer; then, with safety in fire position, align hole in frame with barrel tang and insert slide stop halfway.
6. Pull slide to the rear approximately 1 inch and push slide stop in until it is fully engaged.
7. Release slide forward to closed position to complete assembly.

Wear Safety Glasses and Ear Protection at all times when shooting!

## CLEANING AND CARE

**WARNING: ENSURE PISTOL IS UNLOADED BEFORE ATTEMPTING DISASSEMBLY. REFER TO SECTION TITLED "TO UNLOAD THE PISTOL".**

Frequency of cleaning depends on the frequency of use of the pistol. Accumulation of powder fouling in the breech and chamber area may affect the functioning of the pistol causing jamming or misfiring. If either of these conditions develop, clean the pistol before assuming that something is wrong with it.

All areas of breech, slide, magazine, chamber and bore should be scrubbed or wiped clean with a cleaning patch wetted with a powder solvent. After all areas have been thoroughly cleaned, wipe again with an oiled cloth.

Though these pistols are made of high-quality stainless steel, a light coat of surface rust may develop over a period of time, especially in areas of high humidity. This is a very thin surface coating and can be removed with a rust preventive solvent and a clean cloth.

While use of only well-recognized brands of commercial ammunition is recommended and warranted, some foreign brands utilize corrosive primers which necessitate a thorough cleaning of at least the barrel and slide with hot water. For cleaning the residue from this type of ammunition, use a brass core brush and a stainless steel pistol cleaning rod with a jag tip with new cotton flannel patches cut to fit the bore snugly. After cleaning, use firearm lubricants such as Break-Free CLP or Firepower FP-10.

## SIGHT ADJUSTMENT

The pistol may be provided with an adjustable rear sight with both elevation and windage adjustments. The adjustment screw should be turned to move the sight blade in the direction to which you want the bullet strike point to move. For example, turning the windage adjustment screw counterclockwise moves the sight blade to the left and impact of the bullet to the left.

## SERVICE

Prior to shipment, each AUTOMAG V pistol is carefully inspected and test fired to ensure that it is in proper operating condition. Should the pistol require adjustment, repair or refinishing, we recommend that the pistol be returned directly to the **FACTORY SERVICE DEPARTMENT!** There is no other way to be sure that work is performed in a properly equipped and staffed facility. Failure to use the factory services will result in voiding your warranty.

Except for guns still under warranty, all work will bear a net minimum charge of \$15.00. All pistols returned are to be sent unloaded and prepaid. All collect shipments will be refused.

For best service, always enclose a cover letter with the pistol furnishing serial number, model of pistol, and the nature of the problem or work desired. A statement that the pistol is "defective" is not adequate and will only result in unnecessary delays. Try to be as specific as possible.

**Wear Safety Glasses and Ear Protection at all times when shooting!**

Federal regulations control the shipment of firearms. It may be impossible for the factory to return a pistol directly to you. Check your local regulations before shipment. If this is the case, we recommend that all firearms be sent through a federally licensed dealer.

Please be sure that both the magazine and the chamber are empty before shipping.

**ANY FIREARMS RECEIVED IN A LOADED CONDITION MUST BE REPORTED TO THE FEDERAL AUTHORITIES.**

## **PARTS AND ORDERING**

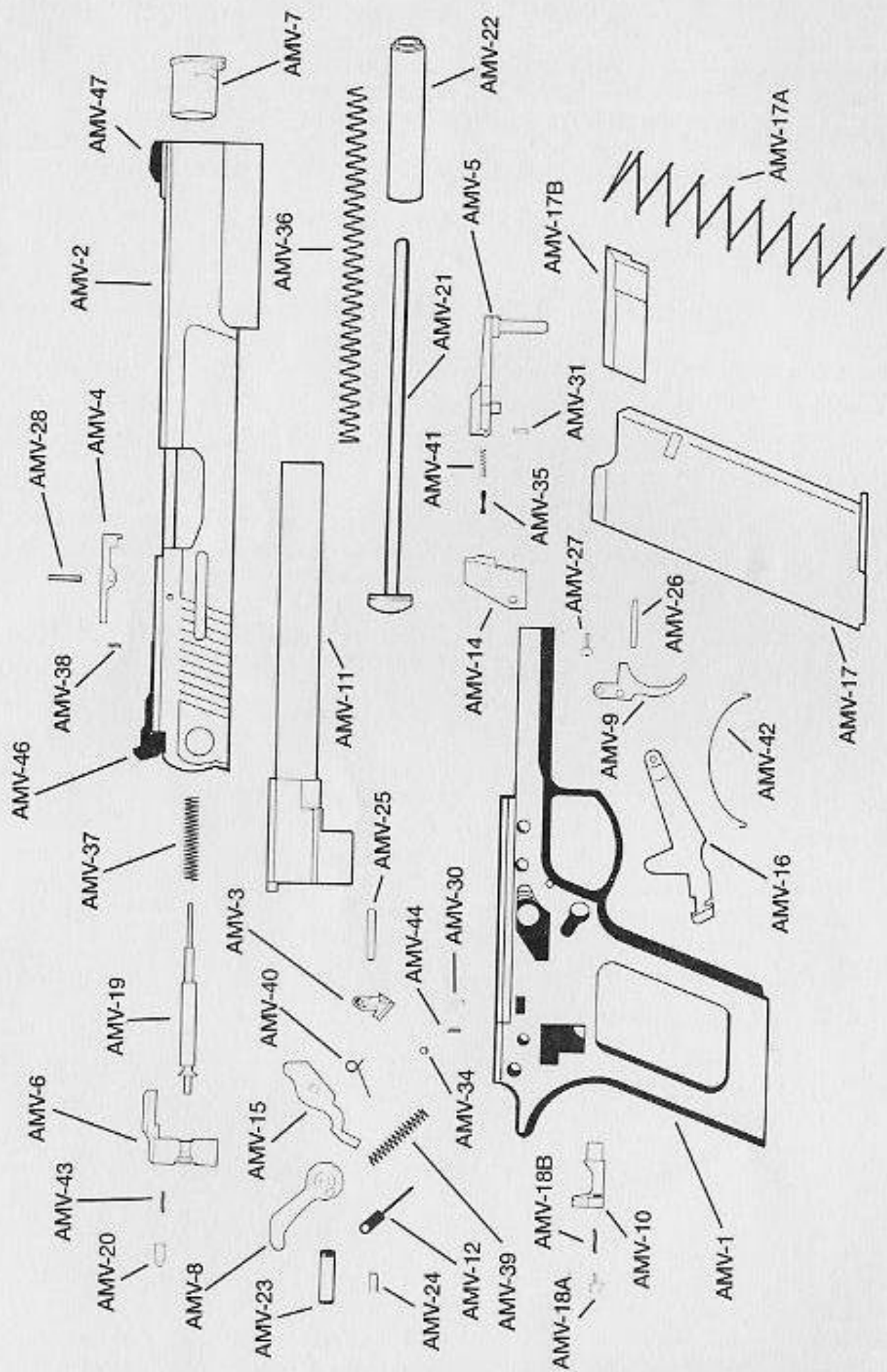
All parts orders should be sent to the attention of the Parts Department. California residents include applicable sales tax.

When ordering parts, specify Model Name, Part Name, and Part Number. Also include the complete serial number of the firearm.

Parts designated by an (\*) asterisk must be factory fitted. The prices shown do not include labor, shipping and tax, if applicable. These parts will be replaced on an exchange basis only. The replaced parts will not be returned to you.

**PLEASE ORDER ALL PARTS BY MAIL ONLY.  
INCLUDE FULL PAYMENT WHEN NECESSARY.**

**Wear Safety Glasses and Ear Protection at all times when shooting!**



## You Must Specify AUTOMAG V When Ordering Parts

Part No.	Part Name	Retail Price	Part No.	Part Name	Retail Price
AMV-1	FRAME		AMV-21	RECOIL ROD	10.00
AMV-2	SLIDE	Dealers Only 110.00	AMV-22	RECOIL ROD BUSHING	8.50
AMV-3	SEAR*	Dealers Only	AMV-23	HAMMER PIVOT PIN	1.25
AMV-4	EXTRACTOR	11.00	AMV-24	HAMMER STRUT PIN	1.25
AMV-5	SLIDE STOP	16.00	AMV-25	SEAR PIN	1.25
AMV-6	SAFETY	12.00	AMV-26	TRIGGER PIVOT PIN	1.25
AMV-7	BARREL BUSHING	15.00	AMV-27	DISCONNECTOR SCREW	1.25
AMV-8	HAMMER*	15.00	AMV-28	EXTRACTOR PIN	1.25
AMV-9	TRIGGER	13.00	AMV-30	DISCONNECTOR STOP PIN	1.25
AMV-10	MAGAZINE LATCH	18.00	AMV-31	SLIDE STOP PLUNGER	1.25
AMV-11	BARREL	98.00		RETAINING PIN	1.25
AMV-12	HAMMER STRUT	4.25	AMV-33	GRIP SCREWS each	1.25
AMV-14	SLIDE STOP PLATE	3.75	AMV-34	EJECTOR DETENT BALL	1.25
AMV-15	EJECTOR	3.50	AMV-35	SLIDE STOP PLUNGER	2.00
AMV-16	DISCONNECTOR	7.25	AMV-36	RECOIL ROD SPRING	5.00
AMV-	MAGAZINE COMPLETE	31.50	AMV-37	FIRING PIN SPRING	1.75
AMV-17	MAGAZINE BODY	16.00	AMV-38	EXTRACTOR SPRING	1.25
AMV-17A	MAGAZINE SPRING	4.00	AMV-39	HAMMER SPRING	1.75
AMV-17B	MAGAZINE FOLLOWER	3.50	AMV-40	SEAR SPRING	1.75
AMV-17C	MAGAZINE FLOORPLATE	3.50	AMV-41	SLIDE STOP PLUNGER SPRING	1.25
AMV-17D	MAGAZINE FLOORPLATE		AMV-42	DISCONNECTOR SPRING	2.00
	RETAINER	3.50	AMV-43	SAFETY DETENT SPRING	1.25
AMV-18A	MAGAZINE LATCH RETAINER	1.75	AMV-44	EJECTOR SPRING	1.25
AMV-18B	MAGAZINE LATCH SPRING	1.25	AMV-45	GRIPS, PAIR	20.00
AMV-19	FIRING PIN	7.50	AMV-46	REAR SIGHT	35.00
AMV-20	SAFETY DETENT PLUNGER	2.25	AMV-47	FRONT SIGHT	14.00
	* Factory or Gunsmith Only			<b>SHIPPING AND HANDLING CHARGE</b>	<b>4.00</b>

**PLEASE SEND PAYMENT IN FULL** (including shipping costs) **ALONG WITH YOUR WRITTEN ORDER WHEN ORDERING PARTS**

(Checks or Money Orders Only Accepted) (Prices Subject to Change Without Notice)

**ARCADIA MACHINE & TOOL, INC.** — 6226 Santos Diaz, Irwindale CA 91702 — (818) 334-6629

### WARRANTY STATEMENT

*AMT* offers no expressed warranty on its product line. *AMT* does recognize its obligation concerning implied warranty. *AMT* will continue to stand behind its products as it has in the past. *AMT* products will be serviced for a period of one year from date of retail purchase, for defects of material or workmanship, at no charge to purchaser. Be sure to retain your sales slip as proof of purchase date when making a claim.

This instruction manual should always accompany this firearm and be transferred with it upon change of ownership or when the firearm is loaned or presented to another person.