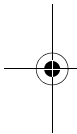
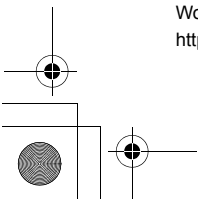
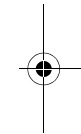


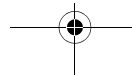
- * Depending on the software installed or your service provider or country, some of the descriptions in this guide may not match your phone exactly.
- * Depending on your country, your phone and accessories may appear different from the illustrations in this guide.



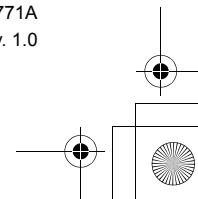
SAMSUNG ELECTRONICS



World Wide Web
<http://www.samsungmobile.com>



Printed in Korea
Code No.: GH68-12771A
English. 10/2006. Rev. 1.0





SGH-D900 User's Guide



Intellectual Property

All Intellectual Property, as defined below, owned by or which is otherwise the property of Samsung or its respective suppliers relating to the SAMSUNG Phone, including but not limited to, accessories, parts, or software relating there to (the "Phone System"), is proprietary to Samsung and protected under federal laws, state laws, and international treaty provisions. Intellectual Property includes, but is not limited to, inventions (patentable or unpatentable), patents, trade secrets, copyrights, software, computer programs, and related documentation and other works of authorship. You may not infringe or otherwise violate the rights secured by the Intellectual Property. Moreover, you agree that you will not (and will not attempt to) modify, prepare derivative works of, reverse engineer, decompile, disassemble, or otherwise attempt to create source code from the software. No title to or ownership in the Intellectual Property is transferred to you. All applicable rights of the Intellectual Property shall remain with SAMSUNG and its suppliers.

Samsung Telecommunications America (STA), Inc.

Headquarters:

1301 E. Lookout Richardson, TX 75082

Customer Care Center:

Drive 1000 Klein Street Plano, TX 75074
Toll Free Tel: 1.888.987.HELP (4357)

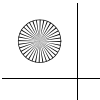
Internet Address: <http://www.samsungusa.com>

©2006 Samsung Telecommunications America, Inc. is a registered trademark of Samsung Electronics America, Inc. and its related entities.

Licensed by Qualcomm Incorporated under one or more of the following patents: U.S. Patent No. 4, 901, 307; 5, 056, 109; 5, 099, 204; 5, 101, 501; 5, 103, 459; 5, 107, 225; 5, 109, 390.

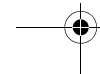
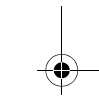
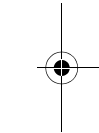
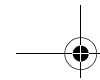
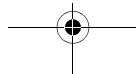
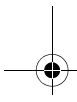
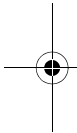
GH68-12771A

Openwave® is a registered Trademark of Openwave, Inc.
RSA® is a registered Trademark RSA Security, Inc.



Disclaimer of Warranties; Exclusion of Liability






EXCEPT AS SET FORTH IN THE EXPRESS WARRANTY CONTAINED ON THE WARRANTY PAGE ENCLOSED WITH THE PRODUCT, THE PURCHASER TAKES THE PRODUCT "AS IS", AND SAMSUNG MAKES NO EXPRESS OR IMPLIED WARRANTY OF ANY KIND WHATSOEVER WITH RESPECT TO THE PRODUCT, INCLUDING BUT NOT LIMITED TO THE MERCHANTABILITY OF THE PRODUCT OR ITS FITNESS FOR ANY PARTICULAR PURPOSE OR USE; THE DESIGN, CONDITION OR QUALITY OF THE PRODUCT; THE PERFORMANCE OF THE PRODUCT; THE WORKMANSHIP OF THE PRODUCT OR THE COMPONENTS CONTAINED THEREIN; OR COMPLIANCE OF THE PRODUCT WITH THE REQUIREMENTS OF ANY LAW, RULE, SPECIFICATION OR CONTRACT PERTAINING THERETO. NOTHING CONTAINED IN THE INSTRUCTION MANUAL SHALL BE CONSTRUED TO CREATE AN EXPRESS OR IMPLIED WARRANTY OF ANY KIND WHATSOEVER WITH RESPECT TO THE PRODUCT. IN ADDITION, SAMSUNG SHALL NOT BE LIABLE FOR ANY DAMAGES OF ANY KIND RESULTING FROM THE PURCHASE OR USE OF THE PRODUCT OR ARISING FROM THE BREACH OF THE EXPRESS WARRANTY, INCLUDING INCIDENTAL, SPECIAL OR CONSEQUENTIAL DAMAGES, OR LOSS OF ANTICIPATED PROFITS OR BENEFITS.



About this Guide

This User's Guide provides you with condensed information about how to use your phone. To quickly learn the basics for your phone, please refer to "Get started" and "Step outside the phone."

In this guide, the following instruction icons appear:

-  Indicates that you need to pay careful attention to the subsequent information regarding safety or phone features.
-  Indicates that you can get more information on the referenced page.
-  Indicates that you need to press the Navigation keys to scroll to the specified option and then select it.
-  Indicates a key on the phone. For example, [OK/↵]
-  Indicates a soft key, whose function is displayed on the phone screen. For example, <Menu>

1



- **Camera and camcorder**
Use the camera module on your phone to take a photo or record a video.

Special features of your phone



- **Music player**
Play MP3 music files using your phone as a music player.



- **Printing via Bluetooth**
Print images, messages, and other personal data directly from your phone.



- **Bluetooth**
Transfer media files and personal data and connect to other devices using free, wireless Bluetooth technology. You can also use a Bluetooth stereo headset to let you enjoy music with high quality stereo sound.



- **Get personal with photo caller ID**
See who's calling you when their very own photo displays.



- **Name card**
Create name cards with your number and profile. Whenever introducing yourself to others, use this convenient electronic name card.

- **Voice clarity**
Use the voice clarity feature to increase the volume and clarity of an incoming call, even in the midst of a crowd.

- **Multimedia Message Service (MMS)**
Send and receive MMS messages with a combination of text, images, video, and audio.

- **E-mail**
Send and receive e-mails with images, video, and audio attachments.



- **Java**
Enjoy Java™-based embedded games and download new games.

Special features of your phone

Contents

Unpack	5
<i>Make sure you have each item</i>	
Your phone	5
<i>Keys, features, and locations</i>	
Get started	6
<i>First steps to operating your phone</i>	
Install and charge the phone	6
Power on or off	7
Keys and display	8
Access menu functions	10
Customise your phone	11
Make/Answer calls	14
Step outside the phone	14
<i>Begin with your camera, the music player, and other special features</i>	
Use the camera	14
Play music files	15
Browse the web	17
Use Phonebook	17

Send messages	18
View messages	20
Use Bluetooth wireless	21
Quickly launch menus by number	22
Watch the phone display on a TV	23
Use a memory card	24
Enter text	26
<i>ABC, T9, Number, and Symbol modes</i>	
Call functions	28
<i>Advanced calling features</i>	
Menu functions	32
<i>All menu options listed</i>	
Solve problems	101
<i>Help and personal needs</i>	
Health and safety information	103
Standard Limited Warranty	124
Index	129

Overview of menu functions

To access Menu mode, press <Menu> in Idle mode.

1 Call log	▶ p.32	3 Applications	▶ p.39	6 My files	▶ p.68	9 Settings	▶ p.89
1 Recent calls	▶ p.32	1 Music Player	▶ p.39	1 Images	▶ p.69	1 Time and date	▶ p.89
2 Missed calls	▶ p.33	2 Voice recorder	▶ p.42	2 Videos	▶ p.70	2 Phone settings	▶ p.90
3 Dialed calls	▶ p.33	3 Image editor	▶ p.43	3 Music	▶ p.71	3 Display settings	▶ p.93
4 Received calls	▶ p.33	4 Bluetooth	▶ p.45	4 Sounds	▶ p.71	4 Sound settings	▶ p.94
5 Delete all	▶ p.33	5 Games	▶ p.47	5 Other files	▶ p.72	5 Light settings	▶ p.95
6 Call time	▶ p.33	6 SIM-AT*	▶ p.48	6 Memory card***	▶ p.75	6 Network services	▶ p.95
				7 Memory status	▶ p.75	7 Security	▶ p.98
						8 Memory status	▶ p.99
2 Phonebook	▶ p.34	4 Browser	▶ p.49	7 Planner	▶ p.75	9 Reset settings	▶ p.99
1 Contact list	▶ p.34	1 Home	▶ p.49	1 Alarm	▶ p.75	10 Key management	▶ p.100
2 FDN contacts*	▶ p.35	2 Bookmarks	▶ p.50	2 Calendar	▶ p.76		
3 Create contact	▶ p.35	3 Enter URL**	▶ p.50	3 Memo	▶ p.80		
4 Group	▶ p.36	4 Clear cache	▶ p.50	4 World clock	▶ p.80		
5 Speed dial	▶ p.37	5 Profile settings	▶ p.51	5 Calculator	▶ p.81		
6 My name card	▶ p.37	6 Current profile	▶ p.52	6 Converter	▶ p.81		
7 Own number	▶ p.38			7 Timer	▶ p.82		
8 Management	▶ p.38	5 Messages	▶ p.52	8 Stopwatch	▶ p.82		
9 Service number*	▶ p.39	1 Create new message	▶ p.52				
		2 My messages	▶ p.55	8 Camera	▶ p.82		
		3 Templates	▶ p.60	1 Take photo	▶ p.83		
		4 Delete all	▶ p.61	2 Record video	▶ p.86		
		5 Settings	▶ p.61	3 Go to My photos	▶ p.89		
		6 Broadcast messages	▶ p.67	4 Go to My video clips	▶ p.89		
		7 Memory status	▶ p.68				

* Shows only if supported by your SIM card.
 ** The menu name may be labelled differently depending on your service provider.
 *** Shows only if a memory card is inserted into the phone.

Unpack

Make sure you have each item

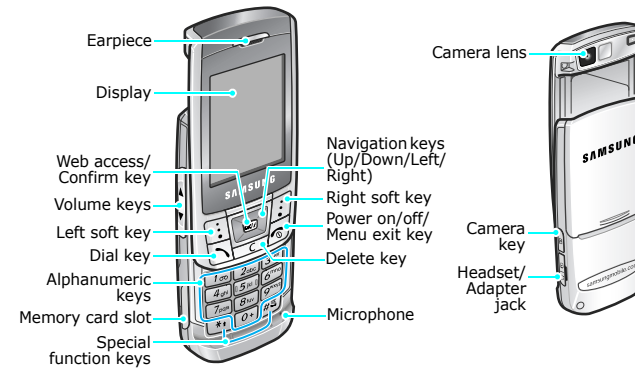
- Phone
- Travel Adapter
- Battery
- User's Guide

You can obtain various accessories from your local Samsung dealer.

- The items supplied with your phone and the accessories at your Samsung dealer may vary, depending on your country or service provider.

Your phone

Keys, features, and locations



Get started

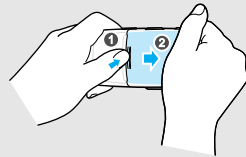
First steps to operating your phone

SIM card information

When you subscribe to a cellular network, you receive a plug-in SIM (Subscriber Identity Module) card loaded with your subscription details, such as your PIN, and available optional services.

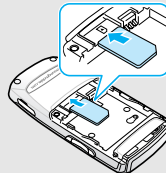
Install and charge the phone

- 1** Remove the battery cover.



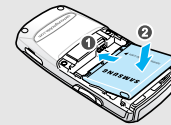
If the phone is already on, first turn it off by pressing and holding [Power].

- 2** Insert the SIM card.

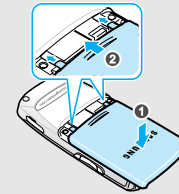


Make sure that the gold-colored contacts on the card are face down.

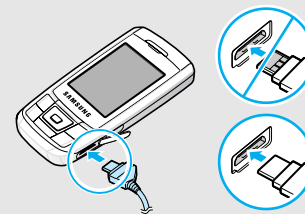
- 3** Install the battery.



- 4** Replace the battery cover.



- 5** Plug the travel adapter into the phone.

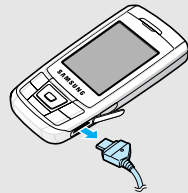


- 6** Plug the adapter into a standard AC wall outlet.

Get started


7 When the phone is completely charged (the battery icon becomes still), unplug the adapter from the power outlet.

8 Remove the adapter from the phone.



Low battery indicator

When the battery is low:


- a warning tone sounds,
- the battery low message displays, and
- the empty battery icon  blinks.

If the battery level becomes too low, the phone automatically turns off. Recharge your battery.

7


Power on or off

Switch on

1. Open the phone.
2. Press [] to turn on the phone.
3. If necessary, enter the PIN and press <OK>.

Do not turn on the phone when mobile phone use is prohibited.

Switch off

1. Open the phone.
2. Press and hold [].





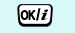





Keypad lock

When you close the phone, the keypad lock feature locks the exposed keys so that nothing will happen if the keys are accidentally pressed.

To unlock the keypad, press <Unlock> and press <OK>.

Keys and display

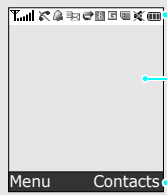
Keys

	Perform the function indicated on the bottom line of the display.		Enter numbers, letters, and some special characters. In Idle mode, press and hold [1] to access your voicemail. Press and hold [0] to enter an international call prefix.
	In Idle mode, access menu options directly. ▶ p. 90 In Menu mode, scroll through menu options.		Enter special characters. In Idle mode, press and hold [#] to activate or deactivate Silent mode. Press and hold [*] to enter a pause between numbers.
	In Idle mode, launch the web browser. In Menu mode, select the highlighted menu option or confirm input.		Adjust the phone volume. In Idle mode, with the phone open, adjust the keypad tone volume. With the phone closed, press and hold to turn on the display. In Menu mode, scroll through the menu options.
	Send or answer a call. In Idle mode, retrieve numbers recently dialed, missed, or received.		In Idle mode, access the Camera menu. Press and hold to turn on the camera. In Camera mode, take a photo and record a video.
	Delete characters from the display and selected item in an application.		
	End a call. Press and hold to switch the phone on and off. In Menu mode, cancel input and return the phone to Idle mode.		

Get started

Display




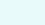


Layout The display has three areas.





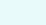
















Icons displays various icons.

Text and graphics displays messages, instructions, and information you enter.

Soft key function indicators shows the current functions assigned to the two soft keys.

- Icons***
-  Received signal strength
 -  Call in progress
 -  Out of your service area; you cannot send or receive calls
 -  Alarm set
 -  New text message
 -  New voicemail

-  New multimedia message
-  New e-mail
-  One of the message is full
-  Call forwarding feature active
▶ p. 95
-  Bluetooth active ▶ p. 45
-  Synchronised with a PC
-  GPRS network
-  EDGE network
-  Music playback in progress
-  Music playback paused
-  Silent mode (Vibration) ▶ p. 13
-  Silent mode (Mute) ▶ p. 13

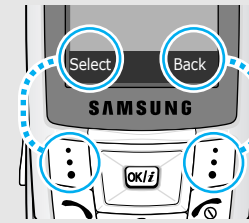
-  Memory card inserted
-  Ringer type ▶ p. 94
 - None: Melody
 -  : Vibration
 -  : Melody and vibration
 -  : Vibration then melody
 -  : Melody then vibration
-  Battery power level

* Depending on your country or service provider, the icons shown on the display may vary.

Access menu functions

Use the soft keys

The roles of the soft keys vary depending on the function you are using. The bottom line of the display indicates their current role.



Press the left soft key to select the highlighted option.

Press the right soft key to return to the previous menu level.

Get started

Get started

Select an option

1. Press a desired soft key.
2. Press the Navigation keys to move to the next or previous option.
3. Press **<Select>** or [OK/✓] to confirm the function displayed or option highlighted.
4. To exit, choose either of the following methods:
 - Press **<Back>** to move up one level.
 - Press [↶] to return to Idle mode.

Use shortcuts

Press the number key corresponding to the option you want.

Customise your phone

Display language

1. In Idle mode, press **<Menu>** and select **Settings** → **Phone settings** → **Language**.
2. Select a language.

Call ringer melody

1. In Idle mode, press **<Menu>** and select **Settings** → **Sound settings** → **Incoming call** → **Ring tone**.
2. Select a ringtone category.
3. Select a ringtone.
4. Press **<Save>**.

Idle mode Wallpaper

You can set wallpaper for the idle screen on the display.

1. In Idle mode, press <Menu> and select **Settings** → **Display settings** → **Wallpaper** → **Normal** → **Wallpaper**.
2. Select an image category.
3. Select an image.
4. Press <Save>.

Menu style

You can change the display style of the main menu screen.

1. In Idle mode, press <Menu> and select **Settings** → **Display settings** → **Main menu style**.
2. Select the style you want.

Menu shortcuts

You can set [Left], [Right], and [Down] to function as shortcuts to access your favorite menus.

1. In Idle mode, press <Menu> and select **Settings** → **Phone settings** → **Shortcuts**.
2. Select a key.
3. Select a menu to be assigned to the key.

Get started

My Menu mode You can set up a menu for your own favorite menu items.

To set a My menu item:

1. In Idle mode, press **<Menu>** and select **Settings** → **Phone settings** → **My menu**.

2. Select an item.

3. Select a menu for the item.

To access a My menu item:

1. In Idle mode, press [Up].
2. Scroll to an item.
3. Press [ok/↵].



Silent mode You can switch the phone to Silent mode to avoid disturbing other people.
Press and hold [#] in Idle mode.

Phone lock You can protect the phone against unauthorised use with a phone password. The phone will require the password on power-up.



1. In Idle mode, press **<Menu>** and select **Settings** → **Security** → **Change password**.
2. Enter the default password, **0000000**, and press **<OK>**.
3. Enter a new 4- to 8-digit password and press **<OK>**.
4. Enter the new password again and press **<OK>**.
5. Select **Phone lock**.
6. Select **Enable**.
7. Enter the password and press **<OK>**.

Make/Answer calls



Make a call

1. Enter an area code and phone number.
2. Press [].
3. To end the call, press [].

Answer a call

1. When the phone is ringing, press [].
2. To end the call, press [].

Adjust the volume during a call




Press [ / ].

Step outside the phone

Begin with your camera, the music player, and other special features

Use the camera

Take a photo

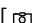



1. In Idle mode, press and hold [] to turn on the camera.
2. Aim the lens at the subject and make any desired adjustments.
3. Press [ / ] to take a photo. The photo is saved automatically.
4. Press <Back> to take another photo.

View a photo

1. In Idle mode, press <Menu> and select **My files** → **Images** → **My photos**.
2. Select the photo you want.

Step outside the phone

Record a video

1. In Idle mode, press and hold [] to turn on the camera.
2. Press [**1**] to switch to Record mode.
3. Press [] to start recording.
4. Press <  > to stop recording. The video is automatically saved.
5. Press <  > to record another video.

Play a video

1. In Idle mode, press < **Menu** > and select **My files** → **Videos** → **My video clips**.
2. Select the video clip you want.

Play music files

Copy music files to the phone

Use these methods:

- Download from the wireless web ▶ p. 49
- Download from a computer using Samsung PC Studio ▶ Samsung PC Studio User's Guide
- Receive via Bluetooth ▶ p. 47
- Copy to a memory card and insert the card into the phone ▶ p. 24

Create a play list

1. In Idle mode, press <Menu> and select **Applications** → **Music Player**.
2. Press <Options> and select **Add music from** → **Phone** or **Memory card**.
3. Press [OK/↵] to select the files you want and press <Add>.

Play music files

1. From the music player screen, press [OK/↵].
2. During playback, use the following keys:
 - OK/↵: pauses or resumes playback.
 - Up: accesses the current album list.
 - Left: moves back to the previous file. Moves backward in a file when held down.
 - Right: skips to the next file. Skips forward in a file when held down.
 - ▲/▼: adjusts the volume.
 - Down: stops playback.

Step outside the phone


Browse the web

Using a built-in web browser, you can easily access the wireless web to get a variety of up-to-date services and information and to download web content.

Launch the web browser

In Idle mode, press [OK/↵], or press <Menu> and select **Browser** → **Home**.

Navigate the web

- To scroll through browser items, press [Up] or [Down].
- To select an item, press <✓> or [OK/↵].
- To return to the previous page, press <Back> or [C].
- To return to the homepage, press and hold [C].
- To use browser options, select  or press [*].

Use Phonebook

Add an entry

To the phone's memory:

1. In Idle mode, enter a phone number and press [OK/↵].
2. Select **Phone** → **New** → a number type.
3. Specify the contact information: First name, Last name, Mobile, Home, Office, Fax, Other, Email, Graphic ID, Ringtone, Group, Birthday, and Notes.
4. Press <Save> or [OK/↵] to save the entry.

To the SIM card:

1. In Idle mode, enter a phone number and press [OK/↵].
2. Select **SIM** → **New**.
3. Enter a name.
4. Press <Save> or [OK/↵] to save the entry.

Find an entry

1. In Idle mode, press **<Contacts>**.
2. Enter the first few letters of the name you want.
3. Select an entry.
4. Scroll to a number and press [**↶**] to dial, or [**OK/↵**] to edit the contact information.

Create and send a name card

1. In Idle mode, press **<Menu>** and select **Phonebook** → **My name card**.
2. Specify your contact information.
3. Press **<Options>** and select **Save** to save the name card.
4. To send the name card, press **<Options>** and select **Send via** → a sending method.

Send messages

Send a text message (SMS)

1. In Idle mode, press **<Menu>** and select **Messages** → **Create new message** → **Text message**.
2. Enter the message text and press [**OK/↵**].
3. Enter destination numbers.
4. Press [**OK/↵**] to send the message.

Send a multimedia message (MMS)

1. In Idle mode, press **<Menu>** and select **Messages** → **Create new message** → **Multimedia message**.
2. Select **Subject**.
3. Enter the message subject and press [**OK/↵**].

Step outside the phone

Step outside the phone

Send a multimedia message (MMS)
(continued)

4. Select **Image or video** or **Music or sound**.
5. For **Image or video**, select **Add image** or **Add video** and add an image or video clip.
For **Music or sound**, select **Add music** or **Add sound** and add a music file or sound clip.
6. Select **Text**.
7. Enter the message text and press [**OK/↵**].
8. Press **<Options>** and select **Send**.
9. Enter destination numbers or e-mail addresses.
10. Press [**OK/↵**] to send the message.

Send an e-mail

1. In Idle mode, press **<Menu>** and select **Messages** → **Create new message** → **Email**.
2. Select **Subject**.
3. Enter the e-mail subject and press [**OK/↵**].
4. Select **Message**.
5. Enter the e-mail text and press [**OK/↵**].
6. Select **File attach**.
7. Add image, video, sound, music files, or document files.
8. Press **<Options>** and select **Send**.
9. Enter e-mail addresses.
10. Press [**OK/↵**] to send the e-mail.

View messages

View a text message

When a notification appears:

1. Press <View>.
2. Select the message from the Inbox.

From the Inbox:

1. In Idle mode, press <Menu> and select **Messages** → **My messages** → **Inbox**.
2. Select the text message (✉).

View a multimedia message

When a notification appears:

1. Press <View>.
2. Select the message from the Inbox.

From the Inbox:

1. In Idle mode, press <Menu> and select **Messages** → **My messages** → **Inbox**.
2. Select the MMS message (📎).

View an e-mail

1. In Idle mode, press <Menu> and select **Messages** → **My messages** → **Email inbox**.
2. Select **Check new mail**.
3. Select an e-mail or header.
4. If you selected a header, press <Options> and select **Retrieve** to view the body of the e-mail.

Step outside the phone

Step outside the phone

Use Bluetooth wireless

Your phone is equipped with Bluetooth technology, enabling you to connect the phone wirelessly to other Bluetooth devices and exchange data with them, talk hands-free, or control the phone remotely.

Turn on Bluetooth

In Idle mode, press **<Menu>** and select **Applications** → **Bluetooth** → **Activation** → **On**.

Search for and pair with a Bluetooth device

1. In Idle mode, press **<Menu>** and select **Applications** → **Bluetooth** → **My devices** → **Search new device**.
2. Select a device.
3. Enter a Bluetooth PIN or the other device's Bluetooth PIN, if it has one, and press **<OK>**. When the owner of the other device enters the same code, the pairing is complete.

Send data

1. Access an application, **Phonebook**, **My files**, **Calendar**, or **Memo**.
2. Select the item you want to send.
3. Press **<Options>** and select **Send via** → **Bluetooth**.
4. Select a device.
5. If necessary, enter the Bluetooth PIN and press **<OK>**.

Receive data

To receive data via Bluetooth, your phone's Bluetooth feature must be active.

If necessary, press **<Yes>** to confirm that you are willing to receive.

Quickly launch menus by number

The dialing screen provides you with shortcuts to certain menus you can use with an entered number. With those shortcuts, you can quickly send an SMS message, set an alarm, perform a conversion/calculation, or schedule an appointment after entering a number.

Activate the Advanced shortcut feature

In Idle mode, press <Menu> and select **Settings** → **Phone settings** → **Advanced shortcuts** → **On**.

Access menus

1. Enter an appropriate number for the action you want in Idle mode.
For example, enter the time you want as 4 digits to set an alarm or the date you want as 4 digits to enter your schedule.

2. Press one of the Navigation keys.

You can access the following applications by default:

- Up: **Alarm** ▶ p. 75
- Down: **Converter** ▶ p. 81
- Left: **Create SMS** ▶ p. 52
- Right: **Calendar** ▶ p. 76

- You can change the shortcuts in **Advanced shortcuts**.

This menu may not be available, depending on the font type on the dialing screen.

Step outside the phone

Watch the phone display on a TV

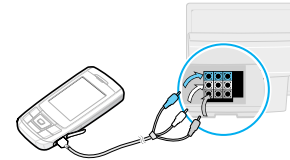
You can view the display of your phone on a screen by connecting the phone and TV with a TV out cable. This enables you to enjoy the photos and videos stored in the phone's memory with your family or friends on a larger screen.

Important TV information

- Depending on your particular TV model, the location and shape of the video input and audio output ports may vary. Match cable connector and TV port colors.
- Depending on the video system, the image may vibrate or in some other way be less than optimal.
- Depending on the video quality, some video files may not display.
- You cannot use a Bluetooth stereo headset or the zooming feature in TV Out mode.

Transfer phone display to a TV

1. With the TV switched on, connect your phone to the TV with a TV out cable, as shown.



2. Switch the TV to External Input mode.
The display switches to TV Out mode and you can view the phone's display on the TV screen.
3. If necessary, set the video system for your TV in the **TV- out** menu. ▶ p. 93
4. Access the application you want and open files.

Use a memory card

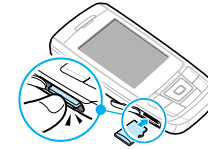
You can use a memory card to increase your phone's capacity.

Important memory card information

- Frequent erasing and writing will shorten a memory card's lifespan.
- Do not remove a memory card from the phone or turn off the phone while data is being accessed or transferred. This could result in loss of data and/or damage to the card or phone.
- Do not subject memory cards to strong shocks.
- Do not touch memory card terminals with your fingers or metal objects. If dirty, wipe the card with a soft cloth.
- Keep memory cards away from small children or pets.
- Do not expose memory cards in a place subject to electro-static discharge and/or electrical noise.

Insert a memory card

1. Slide a memory card into the memory card slot, with the label side face up.



2. Press the card until it locks into place.

Remove the memory card

1. Press the memory card so that it is disengaged from the phone.
2. Slide the card out of the slot.

Step outside the phone

Step outside the phone

Use a card adapter

Using a card adapter and a USB card reader/writer, you can read the card on a PC.

1. Insert a memory card into a card adapter, and then the adapter into a card reader/writer.
2. Plug the USB connector of the card reader/writer into the USB port on your PC.
3. Access the appropriate memory disk and copy to and from the card.

- Your phone is preset to use FAT16-formatted memory cards. If you insert a FAT32-formatted memory card, the phone will ask you to reformat the memory card. If you do not, you will not be able to access the card from the phone.
- If a folder on a memory card has subfolders which exceed the maximum folder depth supported by your phone's file system, you may not open or delete the maximum depth subfolders on the phone.

Enter text

ABC, T9, Number, and Symbol modes

You can enter text in some features such as Messages, Phonebook, or Calendar, using ABC mode, T9 mode, Number mode, and Symbol mode.

Changing the text input mode

- Press and hold [*] to switch between T9 (T9) and ABC (ABC) modes.
- Press [*] to change case or to switch to Number mode (123).
- Press and hold [#] to switch to Symbol mode (SYM).

Using ABC mode

Press the appropriate key until the character you want appears on the screen.

Key	Characters in order displayed	
	Upper case	Lower case
1	. , - ? ! @ : () / 1	
2	A B C Ä Å Æ Ç Γ 2	a b c ä å æ ç Γ 2
3	D E F É Δ Φ 3	d e f è é Φ 3
4	G H I Θ Ψ 4	g h i ì Ψ 4
5	J K L Λ 5	j k l Λ 5
6	M N O Ñ Ö Ø 6	m n o ñ ö ø 6
7	P Q R S Π Σ Ξ 7	p q r s β Σ Ξ 7
8	T U V Û 8	t u v ù 8
9	W X Y Z Ω 9	w x y z Ω 9
0	+ = < > € £ \$ % & ¥ ¤ 0	

(creating an SMS message with GSM-alphabet encoding)

Enter text

Other ABC mode operations

- To enter the same letter twice or to enter a different letter on the same key, wait for the cursor to move to the right automatically or press [Right]. Then, enter the next letter.
- Press [#] to insert a space.
- Press the Navigation keys to move the cursor.
- Press [C] to delete characters one by one. Press and hold [C] to clear the display.

Using T9 mode

T9 is a predictive text input mode that allows you to key in any character using single keystrokes.

Entering a word in T9 mode

1. Press [2] to [9] to start entering a word. Press each key once for each letter.

For example, press [4], [3], [5], [5], and [6] to enter *HELLO* in T9 mode.

T9 predicts the word that you are typing, and it may change with each key that you press.

2. Enter the whole word before editing or deleting characters.
3. When the word displays correctly, go to step 4. Otherwise, press [0] to display alternative word choices for the keys that you have pressed. For example, *OF* and *ME* use [6] and [3].
4. Press [#] to insert a space and enter the next word.

Other T9 mode operations

- Press [1] to enter periods or apostrophes automatically.
- Press [#] to insert a space.
- Press the Navigation keys to move the cursor.
- Press [C] to delete characters one by one. Press and hold [C] to clear the display.

Adding a new word to the T9 dictionary

This feature may not be available for some languages.

1. Enter the word that you want to add.
2. Press [0] to display alternative words for your key presses. When there are no more alternative words, **Spell** displays on the bottom line.

3. Press **<Spell>**.
4. Enter the word you want using ABC mode and press **<Add>**.

Using Number mode

Number mode enables you to enter numbers.
Press the keys corresponding to the digits you want.

Using Symbol mode

Symbol mode enables you to insert symbols.

To	Press
display more symbols	the Navigation keys.
select a symbol	the corresponding number key.
clear the symbol(s)	[C].
insert the symbol(s)	<OK> .

Call functions

Advanced calling features

Making a call

1. In Idle mode, enter the area code and phone number.

- Press [**C**] to clear the last digit or press and hold [**C**] to clear the whole display. You can move the cursor to edit an incorrect digit.
- Press and hold [*****] to enter a pause between numbers.

2. Press [**↶**].
3. When you want to end the call, press [**ⓞ**].

Making an international call

1. In Idle mode, press and hold [**0**]. The + character appears.
2. Enter the country code, area code, and phone number, then press [**↶**].

Call functions

Redialing recent numbers

1. In Idle mode, press [↶] to display the list of recent numbers.
2. Scroll to the number you want and press [↶].

Making a call from Phonebook

Once you have stored a number in Phonebook, you can dial the number by selecting it from Phonebook. ▶ p. 34

You can also use the speed dial feature to assign your most frequently dialed numbers to specific number keys. ▶ p. 37

You can quickly dial a number from the SIM card using the location number assigned when stored.

1. In Idle mode, enter the location number for the phone number you want and press [#].
2. Scroll through other numbers, if necessary.
3. Press <Dial> or [↶] to dial the number you want.

Answering a call

When you receive an incoming call, the phone rings and displays the incoming call image.

29

Press [↶] or <Accept> to answer the call.

Tips for answering a call

- When **Anykey answer** is active, you can press any key to answer a call, except for [↶] and <Reject>. ▶ p. 92
- Press <Reject> or [↶] to reject a call.
- Press and hold [▲/▼] to reject a call or mute the ringer, depending on the **Volume key** setting. ▶ p. 92
- With the phone closed, you can answer a call in Speakerphone mode by pressing [↶] or <Accept> and pressing [OK/↵].

Viewing missed calls

If you have missed calls, the screen displays how many calls you have missed.

1. Press <View>.
2. If necessary, scroll through the missed calls.
3. Press [↶] to dial the number you want.

Using the headset

Use the headset to make or answer calls without holding the phone.

Connect the headset to the jack on the right side of the phone. The button on the headset works as follows:

To	Press
redial the last call	the button and then press and hold it again.
answer a call	the button and hold.
end a call	the button and hold.

Options during a call

You can access a number of functions during a call.

Adjusting the volume during a call

Use [▲/▼] to adjust the earpiece volume during a call.

Press [▲] to increase the volume level and [▼] to decrease the volume level.

Placing a call on hold/Retrieving

Press <Hold> or <Retrieve> to place the call on hold or retrieve the call.

Making a second call

You can make another call if your network supports this function.

1. Press <Hold> to put the call on hold.
2. Make the second call in the normal way.
3. Press <Swap> to switch between the calls.
4. Press <Options> and select **End held call** to end the call on hold.
5. To end the current call, press [ⓞ].

Answering a second call

You can answer an incoming call while already on the phone, if your network supports this function and you have activated the call waiting feature. ▶ p. 97

1. Press [⤴] to answer the call. The first call is automatically put on hold.
2. Press <Swap> to switch between the calls.

Call functions

Using the Speakerphone feature

Use the stereo speakers on the front of the phone to talk and listen with the phone a short distance away.

Press [OK/END] to activate the Speakerphone feature. Press the key again to switch back to the earpiece.

Using In-call options

Press <Options> to access the following options during a call:

- **Switch to headset/Switch to phone:** switch the call to a Bluetooth headset or hands-free car kit or back to the phone.
- **Voice clarity on/Voice clarity off:** remove extraneous noise and increase call quality so that the person with whom you are speaking can hear you clearly even if you are in a noise place.
- **Mute/Unmute:** switch off the phone's microphone so that the other person on the phone cannot hear you, or switch it back on.

- **Mute keys/Send keys:** switch the key tones off or on.

To communicate with answering machines or computerized telephone systems, **Send keys** must be selected.

- **Phonebook:** access the contact list.
- **Send DTMF:** send the DTMF (Dual tone multi-frequency) tones as a group. The DTMF tones are the tones used in phones for tone dialing, sounding when you press the number keys. This option is helpful for entering a password or an account number when you call an automated system, like a banking service.
- **Message:** read an incoming message and send a new message. ► p. 52
- **Join:** set up a multi-party call by adding a caller on hold to a currently active call. You can include up to five people on a multi-party call.

- **Split:** have a private conversation with one multi-party call participant. The other participants can converse with each other. After the private conversation, select **Join** to return both private participants to the multi-party call.
- **Transfer:** transfer the currently active call to a caller on hold. The two callers can talk to each other, but you are disconnected from the call.
- **Remove:** disconnect one multi-party call participant.
- **End held call:** disconnect the call currently on hold.
- **SIM service:** access special services, such as news, weather forecasts, entertainment, and location services, provided by your SIM card. This option is available when you use a SIM card supporting SIM AT menus.

Menu functions

All menu options listed

Call log (Menu 1)

Use this menu to view the calls you have dialed, received, or missed, and the length of the calls. You can also check the cost of your calls, if the SIM card supports this function.

To access this menu, press <Menu> in Idle mode and select **Call log**.

Recent calls (Menu 1.1)

This menu displays the most recent calls dialed, received, or missed.

Accessing a call record

1. Press [Left] or [Right] to move to another call type.
2. Press [Up] or [Down] to scroll through the call list.

Menu functions

- Press [**↶**] to dial a number, or [**OK/↵**] to view the details of a call.

Using call record options

While viewing call details, press <**Options**> to access the following options:

- Call**: make a call to the number.
- Add to Phonebook**: save the number in Phonebook.
- View contact details**: access contact information, if the caller is saved in Phonebook.
- Send message**: send an SMS or MMS message.
- Delete**: delete the selected call record or all records.
- Add to reject list**: add the number to the Reject list.

Missed calls (Menu 1.2)

This menu displays the most recent received calls that you did not answer.

Dialed calls (Menu 1.3)

This menu displays the most recent calls you have dialed.

Received calls (Menu 1.4)

This menu displays the most recent calls you have received.

Delete all (Menu 1.5)

Use this menu to delete all of the records in each call type.

- Press [**OK/↵**] to select the call types to clear.
- Press <**Delete**>.
- Press <**Yes**> to confirm the deletion.

Call time (Menu 1.6)

This menu displays the time log for calls made and received. The actual time invoiced by your service provider will vary.

- Last call time**: check the length of your last call.

- **Total sent:** check the total length of all the calls you have dialed.
- **Total received:** check the total length of all the calls you have received.
- **Reset timers:** reset the call timers. You need to enter the phone password.

The password is preset to **00000000**. You can change this password. ▶ p. 98

Phonebook *(Menu 2)*

You can store phone numbers on your SIM card and in your phone's memory. The SIM card and phone's memory are physically separate, but they are used as a single entity called Phonebook.

To access this menu, press **<Menu>** in Idle mode and select **Phonebook**.

Contact list *(Menu 2.1)*

Use this menu to search for numbers in Phonebook.

Finding an entry

1. Enter the first few letters of the name that you want to find.
2. Select the name you want from the list.
3. Scroll to a number and press [**↶**] to dial, or press [**OK/↵**] to edit the contact information.

Using Phonebook options

While viewing contact details, press **<Options>** to access the following options:

- **Edit:** edit the contact information.
- **Send message:** send an SMS or MMS message to the selected number, or send an MMS message or e-mail to the selected e-mail address.
- **Copy:** copy the number to the phone's memory, to the SIM card, or to the FDN list.
- **Copy to phone:** copy the e-mail address with the name to a new contact.
- **Send via:** send the contact via SMS, MMS, e-mail, or Bluetooth.
- **Delete:** delete the selected contact.

Menu functions

- **Mark as default number:** set the selected number as the default for the contact.
- **Print via Bluetooth:** print the contact information via a Bluetooth-compatible printer. Some printers may not be compatible with the phone.

FDN contacts (Menu 2.2)

Use this menu to create a list of contacts to be used in FDN (Fixed Dialing Number) mode, in which the phone allows outgoing calls only to the specified phone numbers, if your SIM card supports this feature. You can activate FDN mode in the **FDN mode** menu. ▶ p. 99

Adding a contact

1. From the FDN list, press **<Options>** and select **Add**.
2. Enter your PIN2 and press **<OK>**.
3. Enter information about the contact:
 - **Name:** assign a name.
 - **Phone number:** add a number.

- **Location:** assign a location number.
4. Press **<Save>** to save the contact.

Using contact options

You can access contact options by pressing **<Options>** in the contact list. ▶ p. 34

Create contact (Menu 2.3)

Use this menu to add a new contact to Phonebook.

Storing a number in the phone's memory

1. Select **Phone**.
2. Change the settings or enter information about the contact:

- **First name/Last name:** assign a name.
- **Mobile/Home/Office/Fax/Other:** add a number in any category.

You can change the number type, or set the number as the default for the contact by pressing **<Options>** and selecting **Change type** or **Mark as default number**.

- **Email:** assign an e-mail address.

You can set domain name extensions and retrieve one by pressing **<Options>** and selecting **Common address**.

- **Graphic ID:** assign a caller ID image to alert you to a call from the person.
- **Ringtone:** assign a ringtone to alert you to a call from the person.

The settings specified in **Graphic ID** and **Ringtone** are given priority over group settings.

- **Group:** assign the number to a caller group.
- **Birthday:** enter the person's birthday.
- **Notes:** add a memo about the person.

3. Press **<Save>** or [**OK/↓**] to save the contact.

Storing a number on the SIM card

1. Select **SIM**.
2. Enter information about the contact:
 - **Name:** assign a name.

- **Phone number:** add a number.
- **Location:** assign a location number.

To assign a caller ID image, ringtone, or group, the contact must be saved to the phone's memory.

3. Press **<Save>** or [**OK/↓**] to save the contact.

Group *(Menu 2.4)*

Use this menu to organize your contacts in caller groups.

Adding members to a caller group

1. Select a group.
2. Press **<Add>**.
3. Press [**OK/↓**] to select the contacts you want.
4. Press **<Options>** and select **Add**.

Managing caller groups

While viewing the group list, press **<Options>** to access the following options:

- **View:** display the members of the selected group.
- **Add:** add a new group.

Menu functions

- **Edit:** change the properties of the selected group.
- **Send message:** send an SMS, MMS, or e-mail to the members you want.
- **Delete:** delete the selected group. Group members, however, will not be deleted from Phonebook.

Speed dial (Menu 2.5)

Use this menu to assign speed dial numbers (2 to 9) for 8 of your most frequently called numbers.

Assigning speed dial entries

1. Select a key location from **2** to **9**. Key **1** is reserved for your voicemail server.
2. Press **<Options>** and select **Add** → **Contact** or **FDN contact**.
3. Select a contact from the list.
4. Select a number, if the contact has more than one number.

Managing speed dial entries

From the Speed dial screen, press **<Options>** to access the following options:

- **Add:** assign a number to an unassigned key. You can select a contact from Phonebook or the FDN list.
- **View:** check the name and number assigned to the key.
- **Change:** assign a different number to a key.
- **Remove:** clear the speed dial setting for a key.

Dialing speed dial numbers

In Idle mode, press and hold the appropriate key.

My name card (Menu 2.6)

Use this menu to create a name card and send it to other people.

Saving your name card

The procedure for creating your name card is the same as the one for saving a number in the phone's memory. ▶ p. 35

Using name card options

After saving your name card, press <Options> to access the following options:

- **Edit:** edit the name card.
- **Send via:** send the name card via SMS, MMS, e-mail, or Bluetooth.
- **Exchange namecard:** exchange the name cards with another person's name card via Bluetooth.
- **Remove:** delete the name card.
- **Print via Bluetooth:** print your contact information via a Bluetooth-compatible printer. Some printers may not be compatible with the phone.

Own number (Menu 2.7)

Use this feature to check your phone numbers, or to assign a name to each of the numbers. Changes made here do not affect the actual subscriber numbers on your SIM card.

Management (Menu 2.8)

Use this menu to manage contacts in Phonebook.

- **Save new contacts to:** select a default memory location for saving contacts. If you select **Always ask**, the phone will ask you to select a memory location each time you save a number.
- **Copy all:** copy all of the contacts stored on the SIM card to the phone's memory, or vice versa.
- **List by:** sort your contacts by the first name or last name.
- **Delete all:** delete all of the contacts from your phone's memory, your SIM card, or the FDN list.
- **Memory status:** display the number of contacts you have stored in Phonebook.

Menu functions

Service number (Menu 2.9)

Use this menu to view the list of Service Dialing Numbers (SDN) assigned by your service provider, including emergency numbers and numbers for directory enquiries. This menu is available if your SIM card supports SDN.

Scroll to the number you want and press [↵].

Applications (Menu 3)

Use this menu to play music files, edit photos, or play games. You can also use the Bluetooth feature.

To access this menu, press <Menu> in Idle mode and select **Applications**.

Music Player (Menu 3.1)

Use this menu to enjoy music. First, you need to save music files in your phone's memory or on a memory card. To enjoy high quality music, you can use an optional Bluetooth stereo headset.

Normal headsets are not compatible with the music player.

Downloading or receiving music files

Use the following methods to save music files to your phone:

- Download from the wireless web ▶ p. 49
- Download from a computer using the Samsung PC Studio programme ▶ Samsung PC Studio User's Guide
- Receive via Bluetooth ▶ p. 47
- Copy to a memory card and insert the card into the phone ▶ p. 24

Downloaded or received files are stored in the **Music** folder. ▶ p. 71

Creating a play list

Add the music files to the play list so you can play them.

1. From the music player screen, press <Options> and select **Add music from** → **Phone** or **Memory card**.

2. Press [OK/↵] to select the files you want and press <Add>.

Playing music files

1. From the music player screen, press <Options> and select **Play via**.
2. Select **Phone** to use the phone speaker.
Select **Bluetooth stereo headset** to use a Bluetooth stereo headset and then search for and connect the phone to the headset.

During playback, use the following keys:

Key	Function
OK/↵	Pauses or resumes playback.
Up	Accesses the current play list.
Down	Stops playback.
Left	Moves back to the previous file. Moves backward in a file when held down.
Right	Skips to the next file. Skips forward in a file when held down.

Key	Function
▲/▼	Adjusts the volume.
1	Changes the equalizer mode.
2	Changes the playback animation.
3	Changes the repeat mode.
4	Turns 3D sound on or off.
6	Sets the music player to play tracks in random order.
7	Marks the beginning and end of the section you want to repeat. ▶ next section

Repeating a section of a track

You can select a section of the playing file and repeat the section indefinitely.

1. During playback, press [7] to mark the beginning of the section you want to repeat.
The marked section is highlighted in the playback progress bar.

Menu functions

2. Press [7] again to mark the end of the section you wish to repeat. The player repeats the marked section.
3. To stop repeating, press [7].

Using music player options

While playing a music file, press <Options> to access the following options:

- **Play/Pause:** begin or pause playback.
- **Transfer to Bluetooth stereo headset/ Transfer to phone:** switch the sound output to a Bluetooth headset or the phone speaker.
- **Open playlist:** access the current play list or album list.
- **Remove from playlist:** remove the selected file from the play list.
- **Settings:** change the default settings for playing music files.
 - Repeat mode:** select a repeat mode.
 - Shuffle:** set the music player to play tracks in random order.

Equalizer: change the equalizer setting.

3D sound: turn 3D sound on or off.

Visualization: change the playback animation.

Volume: select a volume level.

Music overrides other sounds: set the Music player to continue playback even if you exit it.

- **Details:** access the file properties.
- **Activate key:** get a new licence key when the key for the selected DRM file expires.
- **Reactivate key:** get another key even when the key for the selected DRM file has not expired.
- **Key management:** manage the licence keys you have acquired.
- **Shortcuts:** view the functions of the keys you can use during playback.

Accessing the play list

From the music player screen, press [Up].

Press <Options> to access the following options:

- **Play via:** select a sound output mode, **Phone** or **Bluetooth stereo headset**. If you selected **Bluetooth stereo headset**, you can use a Bluetooth stereo headset and then search for and connect the phone to the headset.

You can try a Bluetooth connection from the headset. To do this, the phone must be in Idle mode.

- **Add music from:** add files to the play list.
- **Move track in playlist:** move the selected file to the position you want within the play list.
- **Go to all playlists:** access the album list.
- **Move to:** move the selected file to another music album.
- **Copy to:** copy the selected file to another music album.
- **Remove:** remove the selected file or all files from the play list.
- **Details:** access the file properties.

Voice recorder (Menu 3.2)

Use this menu to record voice memos. A voice memo can be up to one hour long.

Recording a voice memo

1. Press [**OK/END**] to start recording.
2. Speak into the microphone.
Press [**OK/END**] to pause or resume the recording.
3. When you have finished, press **<Save>** or [Down]. The voice memo is automatically saved.
4. Press [**OK/END**] to review the voice memo, or [Up] to record additional memos.

Playing a voice memo

1. From the voice recorder screen, press **<Options>** and select **Go to My voice clips**.
2. Select a voice memo. The memo plays.

During playback, use the following keys:

Key	Function
OK/END	Pauses or resumes playback.

Menu functions

Key	Function
Left	Moves backward in a file.
Right	Skips forward in a file.
▲ / ▼	Adjusts the volume.
Down	Stops playback.

Using voice recorder options

From the voice recorder screen, press <Options> to access the following options:

- **Record:** record a new voice memo.
- **Go to My voice clips:** access the voice memo list.
- **Settings:** customize the default settings for the voice recorder:

Recording time: select a recording time.

- **Limit for multimedia messages:** record a voice memo for adding to an MMS message.
- **Limit for emails:** record a voice memo for adding to an e-mail.

- **1 hour:** record a voice memo of up to one hour.

Volume: select a volume level.

Default name: change the default prefix of file names.

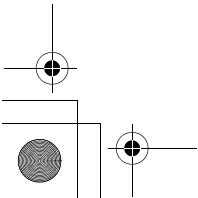
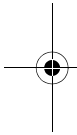
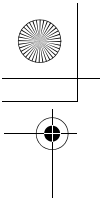
Visualization: select an equalizer image.

Image editor (Menu 3.3)

Use this menu to edit your photos using an assortment of editing tools.

Applying an effect

1. Press <Options> and select **New image** → **Open** or **Take photo**.
2. Select a photo or take a new photo.
3. Press <Load>, or press <Options> and select **Load**.
4. Press <Options> and select **Effects** → an effect option.
5. Press <Done>.
6. Press <Options> and select **Save as**.



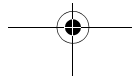
7. Press **<Yes>**.
8. Enter a new file name and press [**OK/**].

Fine-tuning

1. Select a photo or take a new photo.
2. Press **<Load>**, or press **<Options>** and select **Load**.
3. Press **<Options>** and select **Adjust** → an option.
 - **Brightness:** adjust the image brightness.
 - **Contrast:** adjust the image contrast.
 - **Color:** adjust the image balance.
4. Adjust the image brightness, contrast, or color balance.
5. Press **<Done>**.
6. Press **<Options>** and select **Save as**.
7. Press **<Yes>**.
8. Enter a new file name and press [**OK/**].

Reorienting

1. Select a photo or take a new photo.

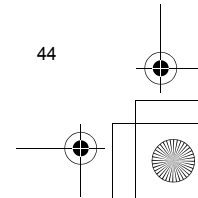
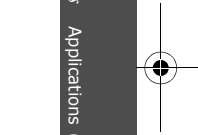
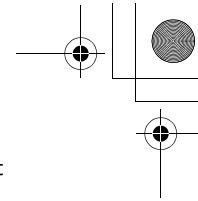


2. Press **<Load>**, or press **<Options>** and select **Load**.
3. Press **<Options>** and select **Transform** → an option.
 - **Rotate:** rotate the photo 90 degrees clockwise or counterclockwise.
 - **Flip:** flip the photo.
4. Press **<Done>**.
5. Press **<Options>** and select **Save as**.
6. Press **<Yes>**.
7. Enter a new file name and press [**OK/**].

Adding visual features

You can decorate photos by adding a frame or an image.

1. Select a photo or take a new photo.
2. Press **<Load>**, or press **<Options>** and select **Load**.
3. Press **<Options>** and select **Insert** → a feature type.
 - **Frame:** add a decorative frame.



Menu functions

- **Clip Art:** add an image.
 - **Emoticon:** add an emoticon.
4. Select an item.
 5. Adjust the position of the inserted item and press **<Done>**.
 6. Press **<Options>** and select **Save as**.
 7. Press **<Yes>**.
 8. Enter a new file name and press [OK/↵].

Bluetooth (Menu 3.4)

Using Bluetooth wireless, you can connect the phone wirelessly to other Bluetooth devices and exchange data with them, talk hands-free, or control the phone remotely.

Bluetooth technology allows free wireless connections between all Bluetooth-compliant devices within a range of 10 metres. Since the devices communicate using radio waves, they do not need to be in line of sight to each other.

45

- If there are obstacles between the devices, the maximum operating distance may be reduced.
- It is recommended that you don't use the Bluetooth feature while using multimedia features such as voice recorder, camera, and music player, or vice versa for better performance.
- Some devices may not be compatible with your phone.

Setting up the Bluetooth feature

The **Bluetooth** menu provides the following options:








- **Activation:** activate or deactivate the Bluetooth feature.
- **My devices:** search for connectable Bluetooth devices.
- **My phone's visibility:** allow other Bluetooth devices to connect to your phone.
- **My phone's name:** assign a Bluetooth device name to your phone, which is then displayed on other devices.
- **Secure mode:** determine if the phone asks for your confirmation when other devices access your data.

- **Bluetooth services:** display available Bluetooth services.

Searching for and pairing with a Bluetooth device

1. From the **Bluetooth** menu, select **My devices**.
2. Select **Search new device**.

After searching, a list of devices to which you can connect displays. The following icons indicate the kind of device:

-  Stereo headset
-  Computer
-  Unknown device
-  Mono headset/Hands-free car kit
-  Mobile phone
-  PDA
-  Printer

The color of the icon indicates the status of the device:

- Grey for unpaired devices
- Blue for paired devices
- Orange for devices that are currently connected to your phone

3. Select a device.
4. Enter a Bluetooth PIN and press **<OK>**. This code is used just once and you don't need to memorize it. When the owner of the other device enters the same code, pairing is complete.

Some devices, especially headsets or hands-free car kits, may have a fixed Bluetooth PIN, such as **0000**. If the other device has one, you must enter the code.

Using device options

From the device list, press **<Options>** to access the following options:

- **Connect:** connect to a headset or hands-free car kit.
- **Disconnect:** end the connection with the connected device.
- **Browse files:** search for data from the device and import data directly to your phone.
- **Service list:** access the Bluetooth service list of the device.
- **Rename:** rename the paired device.

Menu functions

- **Authorize device/Unauthorize device:** determine whether or not the phone asks you to permit connection when other devices try to connect to your phone.
- **Delete:** remove the selected device or all devices.

Sending data via Bluetooth

1. Activate the Bluetooth feature.
2. Select the application in which the item you want to send is stored.
3. Scroll to the item you want and press **<Options>**.
4. Select **Send via → Bluetooth**.
The phone searches for devices within range and displays a list of available devices.
5. Select a device.
6. If necessary, enter the Bluetooth PIN needed for pairing and press **<OK>**.

Receiving data via Bluetooth

To receive data via Bluetooth, your phone's Bluetooth feature must be active.

If an unauthorised Bluetooth device sends data to your phone, the phone displays a confirmation message. To receive data, press **<Yes>**.

Games (Menu 3.5)

Use this menu to access the embedded Java games and downloaded games.

Playing a game

Select a game from the game list and follow the onscreen instructions. The procedure may differ from game to game.

Using game options

From the application list, press **<Options>** to access the following options:

- **Start:** launch the selected application.
- **Delete:** delete the selected application.
- **Details:** access the application properties.
- **Permission:** set permission settings for services charging you additional costs, such as network access and SMS.

- **Lock/Unlock:** lock the application to protect it from being deleted, or unlock the application.
- **Upgrade:** upgrade the application to the latest version, except for embedded games.
- **Send information via text message:** send the URL containing the application via SMS, except for embedded games.
- **Memory status:** access memory information for applications.
- **Network settings:** customize a connection profile to be used for applications requiring network access. The following options are available:
 - APN:** enter the access point name of the network gateway.
 - Login ID:** enter the user ID.
 - Password:** enter the password.
 - Proxy:** select whether or not the phone uses a proxy server to launch the web browser.

Proxy settings: customize the following proxy settings:

*When the proxy is set to **Enable**:*

- **IP address:** enter the gateway address.

- **Port:** enter the port number.

*When the proxy is set to **Disable**:*

- **DNS1:** enter the primary address.

- **DNS2:** enter the secondary address.

SIM-AT (Menu 3.6)

This menu is available if you use a SIM-AT card that supports SIM Application Toolkit menus and provides additional services, such as news, weather, sports, entertainment, and location services. Available services may vary, depending on your service provider's plans. For details, see your SIM card instructions or contact your service provider.

Menu functions

Browser (Menu 4)

The Wireless Application Protocol (WAP) on your phone allows you to access the wireless web. Using the web browser, you can access up-to-date information and a wide variety of media content, such as wallpapers, ringtones, and music files.

To access this menu, press <Menu> in Idle mode and select **Browser**.

Home (Menu 4.1)

Use this menu to connect your phone to the network and load the homepage of the wireless web service provider. You can also press [ok/↵] in Idle mode.

Navigating the web browser

To	Press
scroll through browser items	[Up] or [Down].
select a browser item	<✓/↵> or [ok/↵].

To	Press
return to the previous page	<Back> or [C].
return to the homepage	[C] and hold.

Using browser options


1. Select  or press [✖].
2. Select one of the following browser options:
 - **Back:** go back to the previous page.
 - **Home:** go back to the homepage.
 - **Exit:** exit the web browser.
 - **Reload:** reload the current page.
 - **Show URL:** display the URL address of the current web page.
 - **About ...:** access version and copyright information about the browser.

Accessing other phone menus

From any web page, press [#] to access the following options:

- **Enter URL:** enter a URL address manually.
- **Bookmarks:** switch to the **Bookmarks** menu.
- **Messages:** check the messages stored in the **My messages** folder. You can also create and send a new SMS message.
- **My files:** switch to the **My files** menu.


Exiting the browser

Press [] to exit the browser.

Bookmarks *(Menu 4.2)*

Use this menu to save URL addresses to quickly access a website.

Adding a bookmark

1. Select an empty location.
2. Enter a name for the bookmark and press [Down].
3. Enter a URL address.
4. Press [] to save the bookmark.

Accessing a bookmarked page

Selecting a bookmark item launches the web browser and accesses the associated web page.

Using bookmark options

After saving an item, press <**Options**> to access the following options:

- **Open:** access the website.
- **Edit:** edit the address and name of the bookmark.
- **Delete:** delete the selected bookmark or all bookmarks.

Enter URL *(Menu 4.3)*

Use this menu to manually enter the URL address of a website and access the website.

- The menu name may be labelled differently depending on your service provider.

Clear cache *(Menu 4.4)*

Use this menu to clear the cache, which is the temporary memory that stores the web pages you have recently accessed.

Menu functions

Profile settings (Menu 4.5)

Use this menu to set up servers for the web browser. Contact your service provider for details about your setting options.

For each server, the following options are available:

- **Profile name:** assign a name to the server profile.
- **Home URL:** enter the address of your homepage.
- **Bearer:** select a bearer for each type of network address accessed.
- **Proxy:** select whether or not the phone uses a proxy server to launch the web browser.
- **GPRS settings:** customize the GPRS network settings:

*When the proxy is set to **Enable**:*

Proxy IP: enter the web gateway address.

Proxy port: enter the port number.

APN: enter the access point name of the GPRS network gateway.

Login ID: enter the user ID.

Password: enter the password.

*When the proxy is set to **Disable**:*

DNS1: enter the primary address.

DNS2: enter the secondary address.

APN: enter the access point name of the GPRS network gateway.

Login ID: enter the user ID.

Password: enter the password.

- **GSM settings:** customize the following GSM network settings:

*When the proxy is set to **Enable**:*

Proxy IP: enter the web gateway address.

Proxy port: enter the port number.

Dial number: enter the PPP server phone number.

Login ID: enter the user ID.

Password: enter the password.

Data call type: select a data call type.

*When the proxy is set to **Disable**:*

DNS1: enter the primary address.

DNS2: enter the secondary address.

Dial number: enter the PPP server phone number.

Login ID: enter the user ID.

Password: enter the password.

Data call type: select a data call type.

Current profile (Menu 4.6)

Use this menu to activate one of the proxy servers you have set up.

Messages (Menu 5)

Use the **Messages** menu to send and receive short messages, multimedia messages, and e-mails. You can also use push message, voicemail, and cell broadcast message features.

To access this menu, press **<Menu>** in Idle mode and select **Messages**.

Create new message (Menu 5.1)

Use this menu to create and send text messages, multimedia messages, or e-mails.

Text message (Menu 5.1.1)

Short Message Service (SMS) allows you to send or receive text messages including pictures, audio clips, and animated images.

1. Enter your message.

The maximum number of characters allowed in a short message varies by service provider. If your message exceeds the maximum number of characters, the phone will split the message.

2. Press **<Options>** to access the following options for creating a message:

- **Preview as vivid message:** view the message in 3D view mode. The phone converts message text to 3D vivid graphics. This option is available only when the message consists of a single page.
- **Insert:** add a template, Phonebook entry, or bookmark.

Menu functions

- **Add picture/Add animation/Add melody:** attach a simple image, animated image, or a melody.
 - **Attach:** add name cards or calendar data as data format attachments.
 - **Save in:** save the message in another folder.
 - **Input language:** change the language to be used in T9 input mode.
 - **Text style:** change the text attributes.
3. When you have finished, press <Options> and select **Send only** or **Save and send**.
 4. Enter a destination number.
To send the message to more than one recipient, fill in the destination fields.
 5. Press [**OK/✓**] to send the message.

Multimedia message (Menu 5.1.2)

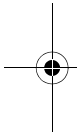
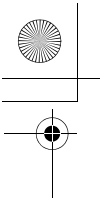
Multimedia Message Service (MMS) delivers messages containing a combination of text, image, video, and audio, from phone to phone or from phone to e-mail.

1. Select the **Subject** line.

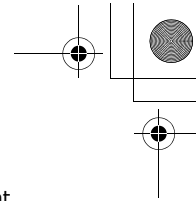
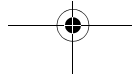
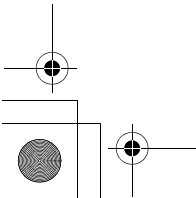
2. Enter the subject and press [**OK/✓**].
3. Select the **Image or video** or **Music or sound** line and add an image, a video, a music file, or a sound file.

- The maximum size allowed for a message can differ, depending on the your service provider.
- Depending on the file type or DRM (Digital Rights Management) system, some image files may be altered and other files may not be able to be forwarded.

4. Select the **Text** line.
5. Enter the message text.
Press <Options> to access the following options:
 - **Insert:** add a template, Phonebook entry, or bookmark.
 - **Save in:** save the message in another folder.
 - **Text style:** change the text attributes.
 - **Input language:** change the language to be used in T9 input mode.
6. When you have finished, press [**OK/✓**].



7. After adding items, press <**Options**> to access the following options for editing the message:
 - **Edit**: edit the subject or text of your message.
 - **Preview**: view the message as it will be shown on the recipient's phone.
 - **Change image/Change video/Change music/Change sound**: replace an added item.
 - **Save in**: save the message to another folder.
 - **Add page**: add pages. Move to each page by pressing [Left] or [Right].
 - **Delete page**: delete the added page.
 - **Edit page**: set the page duration or move the current page to the next or previous page.
 - **Attach**: attach name cards or calendar data as data format attachments, memos, or document files stored in the **Other files** folder.
 - **Remove subject/Remove media/Remove text**: remove an added item.
8. When you have finished, press <**Options**> and select **Send**.

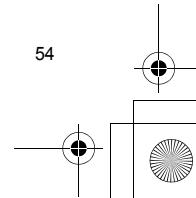


9. Enter a phone number or e-mail address.
To send the message to more than one recipient, fill in additional destination fields.
10. Press [**OK/✓**] to send the message.

Email (Menu 5.1.3)

You can send and receive e-mails that include text, audio, and images. To use this feature, you need to subscribe to an e-mail service and set up your e-mail account and profile. ▶ p. 67

1. Select the **Subject** line.
2. Enter the subject of your e-mail and press [**OK/✓**].
3. Select the **Message** line.
4. Enter the e-mail text.
Press <**Options**> to access the following options:
 - **Insert**: add a template, Phonebook entry, or bookmark.
 - **Save in**: save the e-mail in another folder.
 - **Input language**: change the language to be used in T9 input mode.
5. When you have finished, press [**OK/✓**].



Menu functions

6. Select the **File attach** line and select one of the following options to add files:
 - **Add image/Add videos/Add sounds/Add music:** add items stored in the phone's memory.
 - Depending on the file type or DRM (Digital Rights Management) system, some image files may be altered and other files may not be able to be forwarded.
 - **Add other file:** add document files stored in the **Other files** folder.
 - **Add from memory card:** add files stored on a memory card.
 - **Attach:** attach name cards, calendar data as data format attachments, or memos.
7. After adding items, press **<Options>** to access the following options to edit the e-mail:
 - **Edit:** edit the subject or text.
 - **Remove subject/Remove message:** clear the subject or text.
 - **Remove:** delete the selected attachment or all attachments.

55

- **Remove all attachments:** delete all attachments.

8. When you have finished, press **<Options>** and select **Send**.
9. Enter an e-mail address.

To send the e-mail to more than one recipient, fill in additional destination fields.
10. Press [**OK/✓**] to send the e-mail.

My messages (Menu 5.2)

Use this menu to access messages you have received, sent, or which have failed in sending.



Inbox (Menu 5.2.1)

This folder stores all of the messages you have received, except for e-mails.

Viewing a message

The following icons may appear on the message list to show the message type:

-  SMS
-  MMS

-  MMS notifications
-  Push messages

A ! icon next to a message means that the message is of high priority. A gray-colored message icon indicates low priority.

Using message options

While viewing a message, press <Options> to access the following options:

SMS messages

- **Reply via:** reply to the sender via SMS or MMS.
- **Forward:** forward the message to other people.
- **View as vivid message/View as text message:** view the message in 3D view mode or switch back to normal view mode. This option is available only when the message consists of a single page.
- **Delete:** delete the message.
- **Move to phone/Move to SIM:** move the message between the SIM card and the phone's memory.

- **Zoom view:** zoom in or out on the text by pressing [▲/▼]. To switch back to normal view, press <Back>.
- **Add to block list:** add the sender's number to the Block list.
- **Cut address:** extract URLs, e-mail addresses, or phone numbers from the message.
- **Print via Bluetooth:** print the message via a Bluetooth-compatible printer. Some printers may not be compatible with the phone.
- **Lock/Unlock:** protect the message from being deleted.

MMS messages

- **Retrieve:** retrieve the MMS message from the server.
- **Reply via text message:** send a reply message via SMS.
- **Reply via multimedia message to:** send a reply message via MMS to the sender or all recipients.
- **Forward:** forward the message to other people.

Menu functions

- **Delete:** delete the message.
- **Add to block list:** add the sender's number to the Block list.
- **Cut address:** extract URLs, e-mail addresses, or phone numbers from the message.
- **Attached items:** save media content from the message into your phone's memory.
- **Lock/Unlock:** protect the message from being deleted.
- **Details:** access the message properties.

Push messages

- **Open URL:** connect to the URL specified in the message.
- **Delete:** delete the message.
- **Cut address:** extract URLs, e-mail addresses, or phone numbers from the message.

Delivery reports

- **Delete:** delete the report.

Configuration messages

- **Install:** apply the configuration value in the message to the phone.
- **Delete:** delete the message.
- **Cut address:** extract URLs, e-mail addresses, or phone numbers from the message.
- **Lock/Unlock:** protect the message from being deleted.

Draft (Menu 5.2.2)

This folder stores messages you have saved to send at a later time.

When you select an SMS or e-mail message, it opens in Edit mode so that you can edit and/or send the message.

When you select an MMS message, it opens in Preview mode as would a message from the Inbox. To edit the MMS message, press <Options> and select **Edit**.

Outbox (Menu 5.2.3)

This folder stores messages that the phone is attempting to send or has failed to send.

While viewing a message, press <**Options**> to access the following options:

- **View/Play:** view or play the selected file.
- **Send again:** retry sending the message.
- **Forward:** forward the message to other people.
- **Delete:** delete the message.
- **Move to phone/Move to SIM:** move the message between the SIM card and the phone's memory.
- **Print via Bluetooth:** print the message via a Bluetooth-compatible printer. Some printers may not be compatible with the phone.
- **Lock/Unlock:** protect the message from being deleted.
- **Details:** access the message properties.

Sent (Menu 5.2.4)

This folder stores messages that you have sent successfully.

While viewing a message, press <**Options**> to access the following options:

- **View/Play:** view or play the selected file.
- **Forward:** forward the message to other people.
- **Delete:** delete the selected message.
- **Move to phone/Move to SIM:** move the message between the SIM card and the phone's memory.
- **Print via Bluetooth:** print the message via a Bluetooth-compatible printer. Some printers may not be compatible with the phone.
- **Lock/Unlock:** protect the message from being deleted.
- **Details:** access the message properties.

Menu functions




Email inbox (Menu 5.2.5)

This folder stores e-mails that you have received.

Viewing an e-mail

1. Press <Select> when **Check new mail** displays to get new e-mails from the server. The phone checks the e-mail server and downloads new e-mails.

The following icons may appear on the list to show the e-mail status:

-  Retrieved from the server
-  Being retrieved
-  Failed to retrieve

A ! icon next to a message means that the e-mail is of high priority. A gray-colored e-mail icon indicates low priority.

2. Select an e-mail or header.
3. Press [▲/▼] to view other pages in the e-mail.
Press and hold [▲/▼] to move to the first or last page in the e-mail.

4. Press [*] or [#] to view the next or previous e-mail.

Using e-mail options

While viewing the e-mail or header, press <Options> to access the following options:

- **Retrieve:** retrieve the body of the e-mail from the e-mail server.
- **View/Play:** view or play the selected file.
- **Save to My files/Register:** save the selected file.
- **Reply:** send a reply to the sender via e-mail or MMS.
- **Reply to all:** send a reply to the sender and all of the other recipients.
- **Forward:** forward the e-mail to other people.
- **Delete:** delete the e-mail from the phone's memory or from both the phone's memory and the e-mail server.
- **Add to block list:** add the sender's e-mail address or subjects to the Block list.

- **Cut address:** extract URLs, e-mail addresses, and phone numbers.
- **Attached items:** save the selected attachment or all attachments from the e-mail to your phone's memory.
- **Print via Bluetooth:** print the e-mail via a Bluetooth-compatible printer. Some printers may not be compatible with the phone.
- **Lock/Unlock:** protect the e-mail from being deleted.
- **Details:** access the e-mail properties.

My folder (Menu 5.2.6)

Use this menu to view the messages you have moved to this folder using the **Move to my folder** option while viewing a message list.

Templates (Menu 5.3)

Use this menu to make and use templates of frequently used messages.

Text template (Menu 5.3.1)

You can create SMS templates with the sentences you use frequently so that you can retrieve and insert them when composing an SMS message.

Creating a template

1. Select an empty location.
2. Enter a message and press [ok/↵].

Using template options

From the template list, press <Options> to access the following options:

- **Edit:** edit the template.
- **Send:** create and send a new message.
- **Delete:** delete the selected template.

Multimedia message templates (Menu 5.3.2)

You can access embedded MMS templates or ones you have saved so that you can use them in composing an MMS message.

Creating a template

1. Press <Options> and select **Add new**.

Menu functions

2. Create a template as you would when creating an MMS message.
3. Press <Options> and select **Save in** → **Templates**.

Using template options

From the template list, press <Options> to access the following options:

- **View:** open the selected template.
- **Send:** create and send a new message.
- **Edit:** edit the selected template.
- **Add new:** add a new template.
- **Delete:** delete the selected template or all templates. You cannot delete the embedded templates.

Delete all (Menu 5.4)

Use this menu to delete all messages in each message type at once.

1. Press [**OK/↵**] to select the message folders you want.
2. Press <Delete>.

3. Press <Yes> to confirm the deletion.

Settings (Menu 5.5)

Use this menu to set up various options for using the messaging services.

Text messages (Menu 5.5.1)

You can configure SMS settings.

- **Sending options:** set up the options for sending SMS messages:
 - Reply path:** allow recipients to reply to you through your SMS server.
 - Request delivery receipt:** set the network to inform you when messages have been delivered.
 - Character support:** select a character encoding type. When you select **Auto**, the phone switches the encoding type from GSM-alphabet to Unicode if you enter a Unicode character. Use of Unicode encoding will reduce the maximum number of characters in a message to about half. If this menu is not shown, your phone provides the automatic character encoding by default.

Validity period: set the length of time your messages are stored in the SMS server.

Message type: set the default message type. The network can convert messages into the selected format.

Service center: store or change the number of SMS server.

- **Receiving options:** activate 3D view mode for displaying received messages. The phone will convert message text to 3D vivid graphics. This option is available only when the message consists of a single page.
- **Block number:** set the Blocked number list to reject SMS messages from specific phone numbers. Numbers specified here are also included in the MMS Blocked number list.

Multimedia messages (Menu 5.5.2)

You can configure MMS settings.

- **Sending options:** set up the options for sending MMS messages:

Request delivery receipt: set the network to inform you when your messages have been delivered.

Address hiding: set your address to be hidden from the recipient's phone.

Request read receipt: send a read-reply request along with your messages.

Priority: set the priority level of your messages.

Expiration: set the length of time your messages are stored in the MMS server.

Delivery time: set a time delay before messages are sent.

- **Receiving options:** set up the options for receiving MMS messages:

Anonymous reject: reject messages from unknown senders.

Advert allowed: accept advertisements.

Report allowed: set the network to inform the sender when a message has been delivered to you.

Menu functions

Home network: determine if your phone retrieves new messages automatically when you are in your home service area.

Network when abroad: determine if your phone retrieves new messages automatically when you are roaming on another network.

Reception within home network or abroad has the following options:

- **Automatic:** the phone automatically retrieves messages from the server.
- **Reject:** the phone rejects all messages.
- **Manual:** the phone displays notifications. Use the **Retrieve** option to manually download new messages.

- **Multimedia message profile:** set up an MMS profile and select a profile to be used.

Current profile: select a profile.

Profile settings: configure MMS profiles using different MMS servers:

- **Profile name:** assign a name to the MMS profile.

- **Server URL:** enter the address of your MMS server.

- **Proxy:** connect to the GPRS network using the proxy server.

- **GPRS settings:** customize the settings required for connecting to the GPRS network.

*When the proxy is set to **Enable**:*

IP address: enter the gateway address.

Port: enter the port number.

APN: enter the access point name used for the address of the GPRS network.

Login ID: enter the user ID.

Password: enter the password.

*When the proxy is set to **Disable**:*

DNS1: enter the primary address.

DNS2: enter the secondary address.

APN: enter the access point name used for the address of the GPRS network.

Login ID: enter the user ID.

Password: enter the password.

- **Version:** select an available OMA version and maximum size limit for sending or receiving messages.

Depending on your service provider, it may not be possible to support the maximum limit 300KB. In this case, try again after changing the setting to 100KB.

- **Block number:** set the Blocked number list to reject MMS messages from specific phone numbers. Numbers specified here are also included in the SMS Blocked number list.

- **Message class:** select the type of message content you will add or the message size.

Text only: you can add only text of up to 30 KB.

Small imaging: you can add any type of item, except for video, of up to 30 KB.

Moderate imaging: you can add any type of item, except for video, of up to 100 KB.

Small video: you can add any type of item of up to 100 KB.

Moderate video: you can add any type of items of up to 300 KB.

- **Creation mode:** select an MMS creation mode.

Warning: you can create a message with any type of content and of any size, but the phone will inform you when the content and size have exceeded the maximum.

Free: you can create a message with any type of contents and of any size.

Restricted: you can create a message with the type of content and size specified in **Message class**.

Emails (Menu 5.5.3)

You can configure e-mails settings.

You cannot change e-mail profile and account settings while an e-mail is being sent or retrieved.

- **Sending options:** set up the options for sending e-mails:

Send copy to self: send a copy of your e-mail to your e-mail account.

Menu functions

Request delivery receipt: set the network to inform you when e-mails have been delivered.

Request read receipt: send a read-reply request for a reply along with e-mails.

Priority: select the priority level of your e-mail.

Add signature: attach your name, phone number, or a simple memo to e-mails.

Edit name: edit the name in your signature.

Edit telephone number: edit the phone number in your signature.

Edit note: edit the tag line in your signature.

- **Receiving options:** set up the options for receiving e-mails:

Check interval: determine how often the phone checks the server for incoming e-mails.

If you select **Not used**, you can use the Check new mail feature to check your e-mail manually.

Send read receipt: determine whether or not the phone sends a read-reply for incoming e-mails. If you select **Announce**, the phone asks you to send a read-reply.

Retrieve option: set whether the phone downloads e-mail headers only or e-mail headers and bodies both.

Delete option: determine whether e-mails are deleted immediately or the next time you connect to the server.

Download limit: determine the maximum size for incoming e-mails. Your phone will reject e-mails that exceed the specified size.

Keep in server: leave the copies of e-mails in the server after retrieving.

- **Email accounts:** set up an e-mail account and select an account to be used:

Current account: select an account.

Account settings: configure e-mail accounts using different e-mail servers. Press <Create>, or press <Options> and select **Save**, if one has already been saved.

- **In use:** select this option to use the account and to display the account in **Email inbox**.

- **Account name:** enter a name for the currently selected account.

To access the following options, press [*ok/↵*], or <**Options**> and select **Next**.

- **User name:** enter a user name.
- **Email address:** enter your e-mail address.
- **Reply address:** enter your e-mail address to be used when the recipient sends a reply.

To access the following options, press [*ok/↵*], or <**Options**> and select **Next**.

- **SMTP server:** enter the IP address or host name of the outgoing e-mail server.
- **SMTP port:** enter the SMTP port number.
- **SMTP user ID:** enter the SMTP user name.
- **SMTP password:** enter the SMTP password.
- **Secure connection (SMTP):** use a secure connection for the e-mail service.
- **Retrieve server type:** select the protocol for the incoming e-mail server. The remaining options depend on the protocol type setting.

When the protocol type is POP3:

- **POP3 server:** enter the IP address or host name of the server that receives your e-mail.
- **POP3 port:** enter the POP3 port number.
- **Same ID and password:** select if you want to have the same user ID and password with the outgoing e-mail server.
- **POP3 user ID:** enter the POP3 user name.
- **POP3 password:** enter the POP3 password.
- **APOP login:** connect to the server by using the APOP login scheme when this option is selected.
- **Secure connection (POP3):** use a secure connection for the e-mail service.

When the protocol type is IMAP4:

- **IMAP4 server:** enter the IP address or host name of the server that receives your e-mail.
- **IMAP4 port:** enter the IMAP4 port number.
- **Same ID and password:** select if you want to have the same user ID and password with the outgoing e-mail server.

Menu functions

- **IMAP4 user ID:** enter the IMAP4 user name.
- **IMAP4 password:** enter the IMAP4 password.
- **Secure connection (IMAP4):** use a secure connection for the e-mail service.
- **Include attachments:** select this option to receive attachments with e-mails.
- **Email retrieval limit:** set the number of headers you will retrieve from the server.
- **Email profiles:** set up an e-mail profile and select a profile to be used.
 - Current profile:** select a profile.
 - Profile settings:** configure e-mail profiles using different e-mail servers. Set the options for each profile:
 - **Profile name:** enter a name for the e-mail profile.
 - **APN:** enter the access point name used for the GPRS network address.
 - **Login ID:** enter the user ID.
 - **Password:** enter the password.

- **DNS1:** enter the primary address.
- **DNS2:** enter the secondary address.
- **Block list:** specify e-mail addresses or subjects you want to reject.

Push message (Menu 5.5.4)

You can change the settings for receiving push messages from the wireless web server.

- **Receive:** set how your phone receives push messages.
- **Service center:** enter the address of the server from which you want to receive push messages, when the **Receive** option is set to **Text message-C specific**.

Broadcast messages (Menu 5.6)

The cell broadcast service delivers short messages on various topics such as the weather or traffic.

Use this menu to change the settings for the service and to access broadcast messages.

- **Read:** open received messages.

All broadcast messages are stored in the **Temporary** folder and will be deleted when you turn the phone off. If you do not want a message to be deleted, save it to the **Archive** folder. While viewing the message, press <**Options**> and select **Save**.

- **Activation:** enable or disable the reception of broadcast messages.
- **Receiving channels:** specify the channels from which you receive broadcast messages.
- **Language:** select the languages in which broadcast messages display.

Please contact your service provider for details.

Memory status (Menu 5.7)

Use this menu to view the memory status for text, multimedia, e-mail, or push messages.

My files (Menu 6)

The **My files** menu allows you to access images, videos, voice memos, music files, sounds, and other files stored in the phone's memory or on a memory card.




To access this menu, press <**Menu**> in Idle mode and select **My files**.

Tips for Digital Rights Management


As a result of the Digital Rights Management (DRM) system, some of the media items you download from the Internet or receive by MMS may require a licence key to access them.

You can acquire the key from the website which owns the rights to the content; use the **Activate key** option.

Note the following icons on the list:

-  : Forwardable item with a valid key.
-  : Forwardable item without a valid key.
-  : Unforwardable item with a valid key.

Menu functions

-  : Unforwardable item without a valid key.
Your service provider supports only count-based or unlimited-access DRM files.

Images (Menu 6.1)

This menu displays photos you have taken and images you have downloaded, received in messages, or imported from your computer.

Viewing an image

1. Select an image folder.
2. Select an image.

Viewing a slide show

You can view your images as a slide show, a sequential presentation of each image in the current folder.

1. Select an image folder.
2. While viewing an image, press <Options> and select **Slide show**.
3. Select a time interval. The slide show begins.
4. Press <Back> to stop the slide show.

Using image options

While viewing an image, press <Options> to access the following options:

- **List**: return to the image list.
- **Full screen view/Normal view**: change the view mode.
- **Send via**: send the file via MMS, e-mail, or Bluetooth.
- **Set as**: set the file as your wallpaper or as a caller image for a Phonebook entry.
- **Edit**: edit the image using the Image editor if it is a photo taken by the camera on the phone.
▶ p. 43
- **Move to**: move the file to another folder.
- **Copy to card**: copy the file to a memory card.
- **Delete**: delete the selected file.
- **Rename**: change the file name.
- **Slide show**: view all image as a slide show.
- **Bluetooth visibility**: share the file with other Bluetooth devices.

- **Print via:** print the file by connecting the phone to a printer via Bluetooth or USB.
 - To print via USB, you first need to set the USB mode to **Pictbridge**. ▶ p. 92
 - Some printers may not be compatible with the phone.
- **Lock/Unlock:** protect the file from being deleted.
- **Details:** access the file properties.
- **Activate key:** get a new licence key when the key for the selected DRM file expires.
- **Reactivate key:** get another key even when the key for the selected DRM file has not expired.
- **Key management:** manage the licence keys you have acquired.

Videos (Menu 6.2)

This menu displays video clips you have recorded, downloaded, or received in messages, or imported from your computer.

- Video clips recorded on other devices, such as camcorders, may not play correctly.

Playing a video clip

1. Select a video folder.
2. Select a video clip.

During playback, use the following keys:

Key	Function
OK/↵	Pauses or resumes playback.
Up	Accesses the play list.
Left	Moves back to the previous file. Moves backward in a file when held down.
Right	Skips to the next file. Skips forward in a file when held down.
▲/▼	Adjusts the volume.
Down	Stops playback.

After playback, press <⏮> to access the following options:

- **Play:** play the selected file.

Menu functions

- **Send via:** send the selected file via MMS, e-mail, or Bluetooth.
- **Set as caller image:** set the file as a caller image for a Phonbook entry.
- **Move to:** move the file to another folder.
- **Copy to card:** copy the file to a memory card.
- **Delete:** delete the file.
- **Rename:** change the file name.
- **Bluetooth visibility:** share the selected file with other Bluetooth devices.
- **Lock/Unlock:** protect the file from being deleted.
- **Details:** access the file properties.
- **Activate key:** get a new licence key when the key for the selected DRM file expires.
- **Reactivate key:** get another key even when the key for the selected DRM file has not expired.
- **Key management:** manage the licence keys you have acquired.

Music (Menu 6.3)

This menu displays MP3 music files you have downloaded, or imported from your computer.

1. Select **Music**.
2. Select a file. The music player opens. ▶ p. 40

- When you play a file from this menu, without first adding it to the play list in the music player, background play is not supported.

Sounds (Menu 6.4)

This menu displays the voice memos you have recorded, and sound files you have downloaded, received in messages, or imported from your computer.

Playing a sound clip

1. Select a sound folder.
2. Select a sound clip. For a voice memo, see **Voice recorder**. ▶ p. 42

While playing a sound clip, press <Options> to access the following options:

- **List:** return to the sound list.
- **Send via:** send the selected file via MMS, e-mail, or Bluetooth.
- **Set as:** set the file as your ringtone, as a caller ringtone for a Phonebook entry, or as a ringtone for alarms.
- **Move to:** move the file to another folder.
- **Copy to card:** copy the file to a memory card.
- **Delete:** delete the file.
- **Rename:** change the file name.
- **Bluetooth visibility:** share the selected file or all files with other Bluetooth devices.
- **Lock/Unlock:** protect the file from being deleted.
- **Details:** access the file properties.
- **Activate key:** get a new licence key when the key for the selected DRM file expires.
- **Reactivate key:** get another key even when the key for the selected DRM file has not expired.

- **Key management:** manage the licence keys you have acquired.

Other files (Menu 6.5)

Use this menu to view, without corruption, various document files and files stored in the phone's memory, or a memory card. Available file formats are Microsoft Word, Adobe PDF, Plain text, and so on.

Viewing a file

1. Select a file folder.
2. Select a file. The Pictel File Viewer opens.

- Depending on the file size or memory capacity of Pictel File Viewer, some files may not open properly.
- If a document file contains languages unsupported by the Pictel File Viewer, the content of the document will not display correctly.

Use the following keys to view the document:

Key	Function
▲/▼	Zooms in or out.

Menu functions

Key	Function
Up/Down	Scrolls through pages.
Left/Right	Pans around the page.
ok/ <i>z</i>	Fits the document to the page size.
1	Searches backward through the document for the word entered in Search mode.
2	Returns to the first page.
3	Searches forward through the document for the word entered in Search mode.
4	Goes to the previous page.
5	Rotates the page.
6	Goes to the next page.
7	Changes the view mode to the screen width.

Key	Function
8	Moves to the last page.
9	Changes the view mode to the screen height.
#	Changes the view mode.

Using document options

While viewing a document, press **<Options>** or **<[Options Icon]>** to access the following options:

- **Full screen view/Normal view:** change the view mode.
- **Zoom:** zoom in or out.
- **Fit to:** fit the document to the page size, screen width, or screen height.
- **Rotate:** rotate the document.
- **Go to:** move to another page of the document.

- **Start searching/Stop searching:** activate or deactivate Search mode. You can search for a specific word in the document by entering the word.
- **Send via:** send the file via MMS, e-mail, or Bluetooth.
- **Print via:** print the image by connecting the phone to a printer via Bluetooth or USB.
 - To print via USB, you first need to set the USB mode to **Pictbridge**. ▶ p. 92
 - Some printers may not be compatible with the phone.
- **Move to card:** move the selected file to a memory card, if inserted.
- **Copy to card:** copy the selected file to a memory card, if inserted.
- **Delete:** delete the selected file.
- **Rename:** change the file name.
- **Bluetooth visibility:** share the file with other Bluetooth devices.
- **Lock/Unlock:** protect the file from being deleted.
- **Details:** access the file properties.
- **Settings:** change the settings for viewing a document.
 - **Panning:** change the panning mode.
 - **Map on:** display or hide a map of the current page.
 - **Controller:** hide or display the shortcut tool bar in Full screen view.
- **Activate key:** get a new licence key when the key for the selected DRM file expires.
- **Reactivate key:** get another key even when the key for the selected DRM file has not expired.
- **Key management:** manage the licence keys you have acquired.
- **Shortcuts:** view the functions of the keys you can use in Pictsel File Viewer.

Menu functions

Memory card (Menu 6.6)

Use this menu to access the files stored on a memory card. This menu is shown only when a memory card is inserted into the phone.

- Your phone is preset to use FAT16-formatted memory cards. If you insert a FAT32-formatted memory card, the phone will ask you to reformat the memory card. If you do not, you will not be able to access the card from the phone.
- If a folder on a memory card has subfolders which exceed the maximum folder depth supported by your phone's file system, you may not open or delete the maximum depth subfolders on the phone.

Memory status (Menu 6.7)

You can check the total amount of memory for media items and the amount of memory currently in use in each media box.

Planner (Menu 7)

Use this menu to keep track of your schedule. You can also use convenient features, such as an alarm clock, memo pad, calculator, converter, timer, and stopwatch.

To access this menu, press **<Menu>** in Idle mode and select **Planner**.

Alarm (Menu 7.1)

Use this menu to set alarms. The alert type for a normal alarm corresponds to the call alert type settings. A wake up alarm is not affected by your sound settings.

Setting an alarm

- Select the type of alarm.
 - Alarm:** activate the alarm.
 - Alarm time:** enter the time for the alarm to ring.

- **AM/PM:** set **AM** or **PM** in 12-hour format.
- **Alarm day:** check the days for the alarm.
- **Alarm tone:** select an alarm tone.

3. Press **<Save>**.

Stopping an alarm

- For an alarm, press any key.
- For a wake-up alarm, press **<OK>** or [ok/]. Press any key, except for **<OK>** and [ok/], to cause it to sound again after 5 minutes. You can do this a maximum of 5 times.

Deactivating an alarm

1. Select the alarm you want to deactivate.
2. Select **Off** on the **Alarm** lines.

Setting the alarm to sound when the phone is off

From the Alarm screen, select **Auto power-up** → **On**.
If the phone is off when it is time for the alarm to sound, the phone switches on and sounds the alarm.

Calendar (Menu 7.2)

Use this menu to keep track of your monthly schedule.

Selecting a day on the calendar

When you access the **Calendar** menu, the calendar in Month view appears with today's date indicated by a grey box.

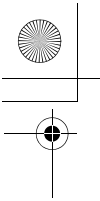
- Press [Left] or [Right] to move by day.
- Press [Up] or [Down] to move by week.
- Press [▲/▼] to move by month.

Creating an item

You can store appointments, anniversaries, tasks, and miscellaneous items on the calendar. More than one item per day can be stored.

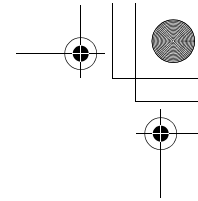
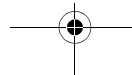
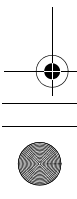
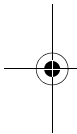
Entering an appointment or a miscellaneous item

1. Select a date on the calendar.
2. Press **<Options>** and select **Create** → **Appointment** or **Miscellany**.



Menu functions

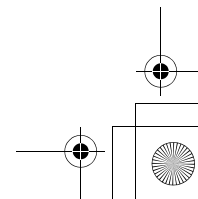
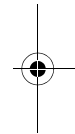
3. Enter information or change the settings:
 - **Subject:** enter a title for the item.
 - **Details:** enter item details.
 - **Start date** and **Start time:** enter the starting date and time for the item.
 - **AM/PM:** select **AM** or **PM** in 12-hour time format.
 - **End date** and **End time:** enter the ending date and time for the item.
 - **AM/PM:** select **AM** or **PM** in 12-hour time format.
 - **Location:** (for **Appointment**) enter information about the item location.
 - **Alarm:** select to set an alarm for the item.
 - **before:** set how long before the item the alarm is to alert you.
 - **Alarm tone:** select an alarm tone.
 - **Repeat:** (for **Appointment**) select to set the item to recur.
 - **until:** (for **Appointment**) select a repeat unit and set the date to end repeating.



4. Press **<Save>** to save the item.

Entering an anniversary

1. Select a date on the calendar.
2. Press **<Options>** and select **Create** → **Anniversary**.
3. Enter information or change the settings:
 - **Occasion:** enter information about the anniversary.
 - **Date:** enter the date.
 - **Alarm:** select to set an alarm for the anniversary.
 - **before:** set how long before the anniversary the alarm is to alert you.
 - **Alarm time:** enter the time for the alarm to ring.
 - **AM/PM:** select **AM** or **PM** in 12-hour time format.
 - **Alarm tone:** select an alarm tone.
 - **Repeat every year:** set the phone to remind you of the anniversary every year.







4. Press <Save> to save the anniversary.

Entering a task

1. Select a date on the calendar.
2. Press <Options> and select **Create** → **Task**.
3. Enter information or change the settings:
 - **Task**: enter information about the task.
 - **Start date**: enter the starting date.
 - **Due date**: enter the ending date.
 - **Priority**: select a priority level.
 - **Alarm**: select to set an alarm for the task.
 - **before**: set how long before the task the alarm is to alert you.
 - **Alarm time**: enter the time for the alarm to ring.
 - **AM/PM**: select **AM** or **PM** in 12-hour time format.
 - **Alarm tone**: select an alarm tone.
4. Press <Save> to save the task.

Consulting the calendar

Once you have scheduled things, the item icons and the number of items for a specific day appears at the bottom of the calendar.

-  Appointments
-  Tasks
-  Anniversaries
-  Miscellaneous items

Viewing an item

1. Select a date on the calendar to display the items for that day.
2. Select an item to view its details.
3. Press [Left] or [Right] to access the other items scheduled for the selected day.

While viewing an item, press <Options> to access the following options:

- **Edit**: edit the item.
- **Create**: add a new item.
- **Send via**: send the item via SMS, MMS, e-mail, or Bluetooth.
- **View by**: change the view mode of the calendar.

Menu functions

- **Done/Not done:** change the status of the task.
- **Delete:** delete the item.
- **Print via Bluetooth:** print the item details via a Bluetooth-compatible printer. Some printers may not be compatible with the phone.

Using calendar options

On the calendar, press <Options> to access the following options:

- **View by:** change the view mode of the calendar.
 - **Create:** add a new item.
 - **Go to:** select today's date or enter a specific date.
 - **Event list:** sort items by type of item.
 - **Delete:** delete items stored on the calendar by using various deleting options.
 - **Settings:** change the default settings for the calendar.
- Starting day:** select which day of the week the calendar starts with.
- Default view by:** select the default calendar view mode.




- **Missed alarm events:** access items whose alarms you have missed.
- **Memory status:** access the memory information for the items stored on the calendar.

Viewing items in a different mode

You can change the calendar display to Day view or Week view. Press <Options> and select **View by** → a view mode.

Day view

You can view items for the selected date. The following icons will be displayed according to the items type and status:

-  Alarm set
-  Recurring item
- Completed task
-  Task priority (Orange: high, Light blue: normal, and Grey: low)

Select an item to view its details.

Week view

You can view items for the selected week. A cell on the timetable indicates the presence of item information. Blue boxes indicate scheduled items, and green boxes indicate miscellaneous items.

Select the cell that contains the item you want.

Memo (Menu 7.3)

You can create a list of memos.

Creating a memo

1. Press <Options> and select **Create**.
2. Enter the memo contents.
3. Press <Options> and select **Save**.

Viewing a memo

Select a memo from the list.

Using memo options

From the memo list, press <Options> to access the following options:

- **View**: access the selected memo.

- **Create**: add a new memo.
- **Send via**: send the memo via SMS, MMS, e-mail, or Bluetooth.
- **Delete**: delete the selected memo or all memos.
- **Memory status**: check the number of memos stored in the phone's memory.

World clock (Menu 7.4)

Use this menu to find out the current time in another part of the world.

Viewing world time

1. From the world map, press [Left] or [Right] to scroll to the city you want on the upper line (1). As the time line moves, the time and date of the given zone displays.
2. To set another time zone, press [Down] to move to the lower line (2).
3. Press [Left] or [Right] to scroll to the city you want.
4. Press [OK] to save the time zone.

Menu functions

Applying daylight saving time

1. From the world map, press <Options> and select **Apply daylight saving time**.
2. Press [OK/↵] to select the time zones you want.
3. Press <Save>.

Calculator (Menu 7.5)

Use this menu to perform basic arithmetic functions such as addition, subtraction, multiplication, and division.

1. Enter the first number.
 - Press [*] to insert a decimal point.
 - Press [#] to insert a bracket.
 - Press [▲/▼] to move the cursor.
 - Press <Options> to use additional arithmetic functions or switch to the Converter screen.
2. Enter the operation for your calculation by pressing the Navigation keys.
3. Enter the second number.
4. Press [OK/↵] to view the result.

5. If necessary, repeat from step 2 to continue the calculation.

Converter (Menu 7.6)

Use this menu for common conversions, such as currency and temperature.

Performing a conversion

1. Select the converter type you want.
2. Press [Left] or [Right] to select the original unit and press [Down].
3. Enter the value to be converted and press [Down].
 - Press [*] to insert a decimal point.
 - Press [#] to change the temperature to above zero (+) or below zero (-).
4. Press [Left] or [Right] to select the unit to which you want to convert.
The equivalent value for the amount you entered displays.

Using converter options

Press <Options> to access the following options:

- **Clear:** clear the current values.
- **Reverse:** reverse the conversion.
- **Exchange rate:** edit the currency rate list.

Timer (Menu 7.7)

Use this menu to set a period of time for the phone to count down. The phone sounds an alarm when the specified period of time has expired.

Starting the timer

1. Press <Set>.
2. Enter the length of time you want to count down and press <OK>.
3. Press [OK/↵] to start counting down.

Stopping the timer

- Press any key to stop the timer when it rings.
- Press [OK/↵] on the Timer screen to stop the timer before it rings.

Stopwatch (Menu 7.8)

Use this menu to measure elapsed time. The maximum time is 10 hours.

1. Press [OK/↵] to start the stopwatch.
2. Press [OK/↵] to select an interval. You can repeat this step for a total of 4 intervals.
3. To reset the stopwatch, press <Reset>.

Camera (Menu 8)

You can use the camera module embedded in your phone to take photos and record videos.

To access this menu, press <Menu> in Idle mode and select **Camera**.

- Do not take photos of people without their permission.
- Do not take photos in a place where cameras are not allowed.
- Do not take photos in a place where you may interfere with another person's privacy.

Menu functions

Take photo (Menu 8.1)

The camera produces JPEG photos.

- When you take a photo in direct sunlight or in bright conditions, shadows may appear on the photo.

Taking a photo

1. Access the **Take photo** menu to turn on the camera and switch the display to Capture mode. You can also press and hold [] in Idle mode.
2. Make any desired adjustments.
 - Press < > to use the camera options.
 - ▶ next section
 - Use the keypad to change the camera settings or switch to other modes. ▶ p. 85
3. Press [] to take a photo. The photo is saved in the **My photos** folder.

4. To	Press
use photo options	< Options >. ▶ p. 85
send the photo via MMS, e-mail, or Bluetooth	[].

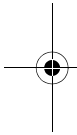
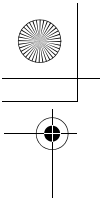
83

4. To	Press
delete the photo	[C] and then < Yes >.
return to Capture mode	< Back >.

Using camera options in Capture mode

In Capture mode, press < > to access the following options:

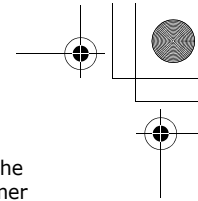
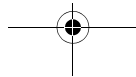
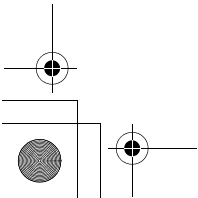
- **Record video:** switch to Record mode.
- **Shooting mode:** take a photo in the following modes:
 - Single shot:** take a photo in Normal mode. You can select whether or not the camera automatically saves a photo.
 - Multi shot:** take a series of action stills. You can select the number of photos the camera will take and the shooting speed.
 - Mosaic shot:** take several stills and save them in one frame. You can select the layout.
- **Effects:** change the color tone or apply a special effect.



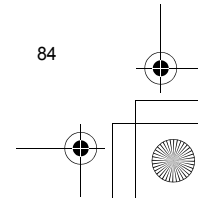
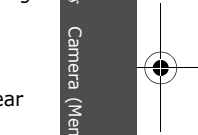
- **Frames:** apply a decorative frame.
- **Flash:** determine the use of the flash.
- **Timer:** set a time delay before the camera takes a photo.
- **Go to My photos:** access the **My photos** folder.
- **Camera settings:** change the default settings for taking a photo.

Photo settings: change the following image settings:

- **Size:** select an image size.
- **Quality:** select an image quality.
- **Viewfinder mode:** select a preview mode.
- **Focus mode:** select a focus mode.
- **Scene program:** set whether or not to use Night shot mode.
- **Exposure metering:** select a method to determine the exposure of an image, based on a specific area of the image.



- **White balance:** adjust the color balance of the photo. You can make your photo appear warmer or cooler.
 - **ISO:** change the ISO setting, which controls the sensitivity of your camera. For low light situations, select a higher ISO number. The higher the ISO number, the faster the camera shutter functions and the more sensitive the camera is to light. Higher ISO settings may bring some distortion to an image.
- Preferences:** change the following camera settings:
- **Shutter sound:** select the sound that you hear when you press the shutter.
 - **Zoom sound:** turn the sound effect for zooming on or off.
 - **Brightness sound:** turn the sound effect for brightness adjustment on or off.
 - **Default name:** change the default prefix of file names.



Menu functions

- **Camera shortcuts:** view the functions of the keys you can use in Capture mode.

Using the keypad in Capture mode

You can use the keypad to customize your camera settings in Capture mode.

Key	Function
Left/Right	Adjusts the brightness.
Up/Down	Zooms in or out.
▲	Flips the image vertically.
▼	Shows the mirror image.
1	Switches to Record mode. ► p. 86
2	Changes the image size.
3	Changes the image quality.
4	Changes the shooting mode.
5	Changes the color tone or applies a special effect.
6	Changes the white balance setting.

Key	Function
7	Selects a decorative frame.
8	Sets the timer.
9	Changes the focus mode.
*	Determines the use of the flash.
0	Goes to the My photos folder. ► p. 69
#	Changes the preview mode.

Using photo options

After saving a photo, press <Options> to access the following options:

- **Send via:** send the file via MMS, e-mail, or Bluetooth.
- **Viewfinder:** return to Capture mode.
- **View:** access one of the multi-shot photos.
- **Set as:** set the photo as your wallpaper or as a caller image for a Phonebook entry.

- **Edit:** edit the image using the Image editor.
▶ p. 43
- **Delete:** delete the file.
- **Multi shot delete all:** delete all of the multi-shot photos.
- **Rename:** change the file name.
- **Go to My photos:** access the **My photos** folder.
- **Bluetooth visibility:** share the selected file with other Bluetooth devices.
- **Print via:** print the file by connecting the phone to a printer via Bluetooth or USB.
 - To print via USB, you first need to set the USB mode to **Pictbridge**. ▶ p. 92
 - Some printers may not be compatible with the phone.
- **Lock/Unlock:** protect the file from being deleted.
- **Details:** access the file properties.

Record video (Menu 8.2)


You can record a video of what is displayed on the camera screen and save it.

Recording a video

1. Access the **Record video** menu to turn on the camera and switch the display to Record mode.
2. Make any desired adjustments.
 - Press <[Menu Icon]> to use the camera options.
▶ next section
 - Use the keypad to change the camera settings or switch to other modes. ▶ p. 88
3. Press [**OK/Start**] to start recording.
4. Press <[Stop Icon]> to stop recording. The video is saved in the **My video clips** folder.

To	Press
play back the video clip	[OK/Start].
use video options	<[Menu Icon]>. ▶ p. 88
delete the video	[C] and then < Yes >.

Menu functions

5. To	Press
return to Record mode	<  >.

Using camera options in Record mode

In Record mode, press <  > to access the following options:

- **Take photo:** switch to Capture mode.
- **Effects:** change the color tone or apply a special effect.
- **Flash:** determine the use of the flash.
- **Timer:** set a time delay before the camera starts recording a video.
- **Go to My video clips:** access the **My video clips** folder.
- **Camcorder settings:** change the following settings for recording a video:
 - Recording mode:** select a video recording mode. Select **Normal** to record a video within the limit of the currently available memory. The video clip is saved in MP4 format.

Select **Limit for multimedia messages** or **Limit for emails** to record a video suitable for an MMS message or an e-mail. The video clip is saved in 3GP format.

Size: select a frame size.

Quality: select an image quality.

Viewfinder mode: select a preview mode.

Record audio: turn on or off the audio.

White balance: adjust the color balance of the image. You can make your video appear warmer or cooler.

Scene program: set whether or not to use Night shot mode.

Zoom sound: turn the sound effect for zooming on or off.

Brightness sound: turn the sound effect for brightness adjustment on or off.

Default name: change the default prefix of file names.

- **Camcorder shortcuts:** view the functions of the keys you can use in Record mode.


Using the keypad in Record mode

You can use the keypad to customize your camera settings in Record mode:

Key	Function
Left/Right	Adjusts the brightness.
Up/Down	Zooms in or out.
▲	Flips the image vertically.
▼	Shows the mirror image.
1	Switches to Capture mode. ▶ p. 83
2	Changes the frame size.
3	Changes the image quality.
4	Changes the video recording mode.
5	Changes the color tone or applies a special effect.

Key	Function
6	Changes the white balance setting.
7	Mutes or unmutes the audio.
8	Sets the timer.
*	Determines the use of the flash.
0	Goes to the My video clips folder. ▶ p. 70
#	Changes the preview mode.

Using video options

After saving a video clip, press <  > to access the following options:

- **Viewfinder:** return Record mode.
- **Send via:** send the file via MMS, e-mail, Bluetooth.
- **Set as caller image:** set the file as a caller ID image for a Phonbook entry.
- **Delete:** delete the file.

Menu functions

- **Rename:** change the file name.
- **Go to My video clips:** access the **My video clips** folder.
- **Bluetooth visibility:** share the file with other Bluetooth devices.
- **Lock/Unlock:** protect the file from being deleted.
- **Details:** access the file properties.

Go to My photos (Menu 8.3)

Use this menu to access a list of photos you have taken. ▶ p. 69

Go to My video clips (Menu 8.4)

Use this menu to access a list of videos you have recorded. ▶ p. 70

Settings (Menu 9)

The **Settings** menu provides you with various setting options to customize the phone to your preferences and needs. You can also reset the settings to their default values.

To access this menu, press <Menu> in Idle mode and select **Settings**.

Time and date (Menu 9.1)

Use this menu to set the current time and date on your phone.

- **Time:** enter the current time.
- **AM/PM:** select **AM** or **PM** in 12-hour time format.
- **Time format:** select the time format.
- **Date:** enter the current date.
- **Date format:** select the date format.
- **Auto update:** activate the auto time update feature. Your phone will read the MCC (Mobile Country Code) from the network and automatically

update the current time for the country that you are in when you travel abroad.

- Time information may not be updated when you move to one time zone to another within a country.

Phone settings (Menu 9.2)

Many different features of your phone's system can be customized to suit your preferences.

Language (Menu 9.2.1)

Use this menu to select one of several languages for the display text.

Greeting message (Menu 9.2.2)

Use this menu to enter the greeting that is displayed briefly when the phone is switched on.

Slide settings (Menu 9.2.3)

Use this menu to set how the phone reacts when you open it for an incoming call, and when you close it while using a function.

- Up:** set whether or not to answer a call by opening the phone.
- Down:** set whether or not the phone maintains the menu you are using when you close the phone.

- When you set **Down** to **Continue operation**, the keypad lock works only in Idle mode.

Shortcuts (Menu 9.2.4)

You can use the Navigation keys as shortcut keys to access specific menus directly from Idle mode. Use this menu to change the shortcut assignments for [Left], [Right], and [Down].

Assigning a shortcut to a key

- Select the key to be used as a shortcut key.
- Select the menu that will be assigned to the key.

Menu functions

Using shortcut options

Press <Options> to access the following options:

- **Assign:** assign a shortcut menu.
- **Change:** change a shortcut menu.
- **Remove:** deactivate the shortcut assignment to the selected key.
- **Remove all:** deactivate all shortcut assignments.

My menu (Menu 9.2.5)

You can set up a menu of your own using your favorite menu items, which can be easily accessed by pressing [Up] in Idle mode.

Setting up My menu items

1. Select an item to be changed.
2. Select the menu item you want.

Using item options

Press <Options> to access the following options:

- **Assign:** assign an item.
- **Change:** change the selected item.

- **Remove:** remove the selected item.
- **Remove all:** remove all items.

Advanced shortcuts (Menu 9.2.6)

Use this menu to activate the Advanced shortcut feature. You can quickly access the text message, alarm, calculator, calendar, and converter applications from the dialing screen.

- This menu may not be available, depending on the font type on the dialing screen.

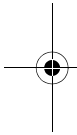
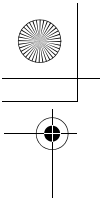
Changing an Advanced shortcut feature

1. Select **On** and press [Down].
2. Select a key to be changed as a shortcut key.
3. Select a menu that will be assigned to the key.

Using Advanced shortcut options

Press <Options> to access the following options:

- **Assign:** assign a shortcut menu.
- **Change:** change a shortcut menu.
- **Remove:** deactivate the shortcut assignment to the selected key.



- **Remove all:** deactivate all shortcut assignments.

Volume key (Menu 9.2.7)

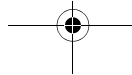
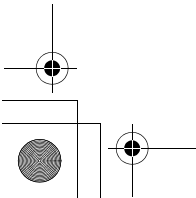
Use this menu to change the volume key settings.

- **Volume key function:** set whether the phone mutes the call ringer or rejects a call if you press and hold [▲/▼] when a call comes in. You can also set whether the phone sends an SMS message to the caller when a call is rejected.
- **Text message:** enter a message to be sent to the caller when a call is rejected.

USB settings (Menu 9.2.8)

Use this menu to select a USB mode to be used when you connect your phone to a PC or printer via USB.

- **Modem:** select to use your phone as a modem.
- **Mass storage:** select to access a memory card, if a memory card is inserted.
- **Pictbridge:** select to connect your phone to a PictBridge-compatible printer.



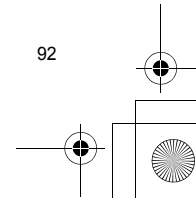
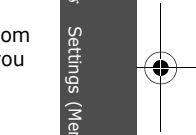
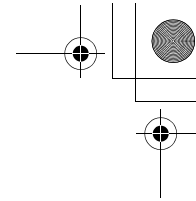
Extra settings (Menu 9.2.9)

You can turn the automatic redialing or answering features on or off.

- **Auto redial:** set the phone to make up to ten attempts to redial a phone number after an unsuccessful call.
- **Any key answer:** answer an incoming call by pressing any key, except for [Ⓜ] or <Reject>.
- **Voice clarity:** remove extraneous noise and increase call quality so that the person with whom you are speaking can hear you clearly even if you are in a noisy place.

Offline mode (Menu 9.2.10)

Use this menu to switch the phone to Offline mode, in which the phone functions requiring network connections are deactivated. You can use non-wireless functions, such as calendar, games, contacts, and voice recorder on an airplane during flight.



Menu functions

Display settings (Menu 9.3)

Use this menu to change settings for the display and light.

Wallpaper (Menu 9.3.1)

You can change the background image that is displayed on the display.

Main menu style (Menu 9.3.2)

You can select a display style for the main menu screen.

Text display (Menu 9.3.3)

You can change the display settings for the text displayed on the idle screen.

Text position: select a position. If you do not want text to display in Idle mode, select **Off**.

This menu may not be available, depending on the wallpaper setting.

- **Text style:** select a font style.
- **Text color:** select a font color.

Skin (Menu 9.3.4)

You can select a skin color pattern for Menu mode.

Brightness (Menu 9.3.5)

You can adjust the brightness of the display for varying lighting conditions.

Dialing display (Menu 9.3.6)

Use this menu to select a font type, color and size for the numbers entered and the background color of the display while dialing.

Calendar (Menu 9.3.7)

Use this menu to display the calendar of the current month on the idle screen.

This menu may not be available, depending on the wallpaper setting.

Show caller ID (Menu 9.3.8)

Use this menu to set the phone to display missed call notifications with the most recently missed caller's information.

TV-out (Menu 9.3.9)

Use this menu to select a video system for a TV.

Sound settings (Menu 9.4)

Use this menu to customize various sound settings.

Incoming call (Menu 9.4.1)

Use this menu to select a volume level and alert type for incoming calls.

- **Alert type:** specify how you are to be informed of incoming calls.
- **Ring tone:** select a ringtone for the call ringer.
- **Volume:** select a ringer volume.

Keypad tone (Menu 9.4.2)

Use this menu to select the tone that the phone sounds when you press a key.

- You can adjust the keypad tone volume using [▲ / ▼] in Idle mode.
- This menu may not be available, depending on the font type on the dialing screen.

Message tone (Menu 9.4.3)

Use this menu to set up the ringtone for incoming messages.

- **Tone:** select one of several message tones.
- **Alert type:** specify how you are informed when a message comes in.
- **Repetition:** specify how often the phone informs you of a new message.

Power-on/off tone (Menu 9.4.4)

Use this menu to select the melody that the phone sounds when it is switched on or off.

Slide tone (Menu 9.4.5)

Use this menu to select the tone that the phone sounds when you open or close the phone.

Silent mode (Menu 9.4.6)

Use this menu to set how the phone acts to alert you to a specific event in Silent mode.

Extra tones (Menu 9.4.7)

Use this menu to customize additional tones for the phone.

Menu functions

- **Minute minder:** set the phone to beep every minute during an outgoing call to keep you informed of the length of your call.
- **Connection tone:** set the phone to beep when an outgoing call is connected to the system.
- **Alerts on call:** set the phone to beep when you receive a new message or when the time for an alarm comes during a call.
- **Indicative tone:** set the phone to beep when a pop-up window displays.

Light settings (Menu 9.5)

Use this menu to change settings for the light.

Backlight time (Menu 9.5.1)

You can select the length of time the backlight or display stays on in Dim mode.

- **On:** select the length of time the backlight stays on.
- **Dim:** select the length of time the display stays on in Dim mode after the backlight turns off. After a specified time, the display turns off.

95

- **During charging:** set whether or not to activate Dim mode while charging your phone.

Keypad light (Menu 9.5.2)

You can set how the phone controls the use of the keypad light.

- **Any time:** the keypad light is always used.
- **Night time:** the keypad light is used only between 5:00 PM and 9:00 AM.
- **Custom time:** specify the time period that the keypad light is used.

Network services (Menu 9.6)

Use this menu to access network services. Please contact your service provider to check their availability and subscribe to them, if you wish.

Call forwarding (Menu 9.6.1)

This network service reroutes incoming calls to a phone number that you specify.

1. Select a call forwarding option:
 - **Forward always:** forward calls.
 - **Busy:** forward calls when you are on another call.
 - **No reply:** forward calls when you do not answer the phone.
 - **Unreachable:** forward calls when you are not in your service area or when your phone is switched off.
 - **Cancel all:** cancel all call forwarding options.
2. Select the type of calls to be forwarded.
3. Select **Activate**. To deactivate call forwarding, select **Deactivate**.
4. Move to the **Divert to** line.
5. Enter the number to which calls are to be forwarded and press <Select>.
6. If you selected **No reply**, move to the **Sec** line and select the length of time the network delays before forwarding a call.

Call barring (Menu 9.6.2)

This network service allows you to restrict your calls.

1. Select a call barring option:
 - **All outgoing:** prohibit outgoing calls.
 - **International:** prohibit international calls.
 - **International except home:** only allow calls to numbers within the current country when you are abroad, and to your home country.
 - **All incoming:** prohibit incoming calls.
 - **Incoming while abroad:** prohibit incoming calls when you use your phone outside of your home service area.
 - **Cancel all:** cancel all call barring settings, allowing to be sent and received normally.
 - **Change barring password:** change the call barring password obtained from your service provider.
2. Select the type of calls to be barred.
3. Select **Activate**. To deactivate call barring, select **Deactivate**.
4. Enter the call barring password supplied by your service provider and press <Select>.

Menu functions

Call waiting (Menu 9.6.3)

This network service informs you when someone is trying to reach you while you are on another call.

1. Select the type of calls to which the call waiting option will apply.
2. Select **Activate**. To deactivate call waiting, select **Deactivate**.

Network selection (Menu 9.6.4)

This network service allows you to manually select the network to be used while roaming outside of your home area, or to let the network be chosen automatically. You can select a network other than your home network only if there is a valid roaming agreement between the two.

Caller ID (Menu 9.6.5)

This network service allows you to prevent your phone number from being displayed on the phone of the person being called. However, some networks do not allow the user to change this setting. If you select **Default**, the phone will use the default setting provided by the network.

97

Voice mail server (Menu 9.6.6)

Use this menu to store the number of the voicemail server and access your voicemails.

- Your service provider can give you the voicemail server number.

- **Connect to voice server:** connect to the voicemail server to allow you to listen to your messages.
- **Voice server number:** enter the voicemail server number.

Band selection (Menu 9.6.7)

For the phone to make and receive phone calls, it must register with an available network.

Your phone can handle any of the following types of networks: Combined GSM 900/1800, Combined GSM 850/1900, and Quad band.

The country where you purchased your phone determines the default band that it uses. When you travel abroad, you must remember to change to an appropriate band.

Security (Menu 9.7)

Use this menu to protect the phone against unauthorized use by managing the several access codes of your phone and SIM card.

- If you enter an incorrect PIN/PIN2 three times in succession, the SIM card is blocked. To unblock it, you need to enter your PUK/PUK2 (Personal Unblocking Key). The codes are supplied by your network operator.

PIN check (Menu 9.7.1)

The 4- to 8-digit PIN (Personal Identification Number) protects your SIM card against unauthorized use. When this feature is enabled, the phone requires your PIN each time it is switched on.

Change PIN (Menu 9.7.2)

Use this menu to change your PIN. The PIN check feature must be enabled to use this feature.

Phone lock (Menu 9.7.3)

The Phone lock feature locks the phone from unauthorized use.

When this feature is enabled, you must enter a 4- to 8-digit phone password each time the phone is switched on.

The password is preset to **00000000**. To change the password, use the **Change password** menu.

Change password (Menu 9.7.4)

Use this menu to change your phone password.

Privacy (Menu 9.7.5)

Use this menu to lock access to call logs, Phonebook, or your media contents, including messages, media files, and document files.

1. Press [**OK/IZ**] to select the items to lock.
2. Press **<Save>** to lock the marked items.
3. Enter the phone password and press **<OK>**.

To access a locked item, you need to enter the phone password.

Menu functions

SIM lock (Menu 9.7.6)

The SIM lock feature allows your phone to work only with the current SIM by assigning a SIM lock code. You must enter the SIM lock code to use a different SIM card.

FDN mode (Menu 9.7.7)

If supported by your SIM card, Fixed Dialing Number (FDN) mode restricts your outgoing calls to a limited set of phone numbers. When this feature is enabled, you can make calls only to phone numbers stored on the SIM card.

Change PIN2 (Menu 9.7.8)

If supported by your SIM card, the Change PIN2 feature changes your current PIN2.

Memory status (Menu 9.8)

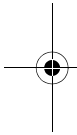
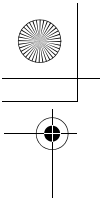
Use this menu to check the amount of memory being used for storing data in Shared memory, Messages, My files, Calendar, Phonebook, Games, and Memo.

Reset settings (Menu 9.9)

Use this menu to reset the phone settings, display settings, sound settings, and light settings individually to factory default settings.

1. Press [OK/↵] to select the setting categories to be reset.
2. Press <Reset> to reset the marked items and then <Yes>.
3. Enter the phone password and press <OK>.

The password is preset to **00000000**. You can change this password. ▶ p. 98

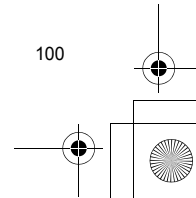
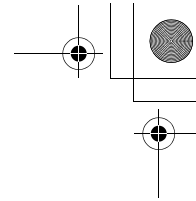
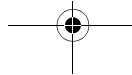
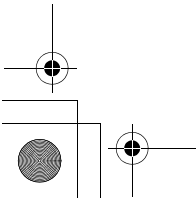


Key management *(Menu 9.10)*

Use this menu to manage the licence keys you have acquired to activate media contents locked by DRM systems.

Press **<Options>** to access the following options:

- **Details:** access the properties of the licence key.
- **Display/Preview/Play/Execute:** open the corresponding media content.
- **Delete:** delete the selected licence key.
- **Go to my messages/Go to My files/Go to Games:** access the message containing the media content, the corresponding file folder, or the corresponding game.



Solve problems

Help and personal needs

To save the time and expense of an unnecessary service call, perform the simple checks in this section before contacting a service professional.

When you switch on your phone, the following messages may appear:

"Insert SIM"

- Be sure that the SIM card is correctly installed.

"Phone lock"

- The automatic locking function has been enabled. You must enter the phone's password before you can use the phone.

"Enter PIN"

- You are using your phone for the first time. You must enter the PIN supplied with the SIM card.
- The PIN check feature is enabled. Every time the phone is switched on, the PIN has to be entered. To disable this feature, use the **PIN check** menu.

"Enter PUK"

- The PIN code has been entered incorrectly three times in succession, and the SIM card is now blocked. Enter the PUK supplied by your service provider.

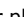
"No service" or "Limited service" displays

- The network connection has been lost. You may be in a weak signal area. Move and try again.
- You are trying to access an option for which you have no subscription with your service provider. Contact the service provider for further details.

You have entered a number but it was not dialed

- Be sure that you have pressed [↵].
- Be sure that you have accessed the right cellular network.
- Be sure that you have not set an outgoing call barring option.

Your correspondent cannot reach you

- Be sure that your phone is switched on. ([] pressed for more than one second.)
- Be sure that you are accessing the correct cellular network.
- Be sure that you have not set an incoming call barring option.


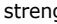
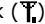
Your correspondent cannot hear you speaking

- Be sure that you have unmuted the microphone.
- Be sure that you are holding the phone close enough to your mouth. The microphone is located at the bottom of the phone.

The phone starts beeping and "Battery low" flashes on the display

- Your battery is insufficiently charged. Recharge the battery.

The audio quality of the call is poor

- Check the signal strength indicator on the display (). The number of bars indicates the signal strength from strong () to weak (.

- Try moving the phone slightly or moving closer to a window if you are in a building.

No number is dialed when you re-call a Contacts entry

- Use the **Contact list** feature to ensure the number has been stored correctly.
- Re-store the number, if necessary.

The battery does not charge properly or the phone sometimes turns itself off

- Wipe the charging contacts both on the phone and on the battery with a clean soft cloth.

If the above guidelines do not help you to solve the problem, take note of:

- The model and serial numbers of your phone
- Your warranty details
- A clear description of the problem

Then contact your local dealer or Samsung after-sales service.

Solve problems

Health and safety information

Exposure to Radio Frequency (RF) Signals

Certification Information (SAR)

Your wireless phone is a radio transmitter and receiver. It is designed and manufactured not to exceed the exposure limits for radio frequency (RF) energy set by the Federal Communications Commission (FCC) of the U.S. government. These FCC exposure limits are derived from the recommendations of two expert organizations, the National Council on Radiation Protection and Measurement (NCRP) and the Institute of Electrical and Electronics Engineers (IEEE). In both cases, the recommendations were developed by scientific and engineering experts drawn from industry, government, and academia after extensive reviews of the scientific literature related to the biological effects of RF energy.

The exposure limit set by the FCC for wireless mobile phones employs a unit of measurement known as the Specific Absorption Rate (SAR). The SAR is a measure of the rate of absorption of RF energy by the human body expressed in units of watts per kilogram (W/kg). The FCC requires wireless phones to comply with a safety limit of 1.6 watts per kilogram (1.6 W/kg). The FCC exposure limit incorporates a substantial margin of safety to give additional protection to the public and to account for any variations in measurements.

SAR tests are conducted using standard operating positions accepted by the FCC with the phone transmitting at its highest certified power level in all tested frequency bands. Although the SAR is determined at the highest certified power level, the actual SAR level of the phone while operating can be well below the maximum value. This is because the phone is designed to operate at multiple power levels so as to use only the power required to reach the network. In general, the closer you are to a wireless base station antenna, the lower the power output.

Before a new model phone is available for sale to the public, it must be tested and certified to the FCC that

it does not exceed the exposure limit established by the FCC. Tests for each model phone are performed in positions and locations (e.g. at the ear and worn on the body) as required by the FCC. For body worn operation, this phone has been tested and meets FCC RF exposure guidelines when used with an accessory that contains no metal and that positions the handset a minimum of 1.5 cm from the body. Use of other accessories may not ensure compliance with FCC RF exposure guidelines.

The FCC has granted an Equipment Authorization for this mobile phone with all reported SAR levels evaluated as in compliance with the FCC RF exposure guidelines. The maximum SAR values for this model phone as reported to the FCC are:

- Part 22:
 - Head: 0.679 W/Kg.
 - Body-worn: 0.663 W/Kg.
- Part 24:
 - Head: 1.04 W/Kg.
 - Body-worn: 0.594 W/Kg.

SAR information on this and other model phones can be viewed on-line at www.fcc.gov/oet/fccid. To find information that pertains to a particular model phone, this site uses the phone FCC ID number which is usually printed somewhere on the case of the phone. Sometimes it may be necessary to remove the battery pack to find the number. Once you have the FCC ID number for a particular phone, follow the instructions on the website and it should provide values for typical or maximum SAR for a particular phone. Additional product specific SAR information can also be obtained at www.fcc.gov/cgb/sar.

UL Certified Travel Adaptor

The Travel Adaptor for this phone has met UL 1310 safety requirements. Please adhere to the following safety instructions per UL guidelines.

**FAILURE TO FOLLOW THE INSTRUCTIONS OUTLINED
MAY LEAD TO SERIOUS PERSONAL INJURY AND
POSSIBLE PROPERTY DAMAGE**

**IMPORTANT SAFETY INSTRUCTIONS - SAVE THESE
INSTRUCTIONS.**

Health and safety information

DANGER - TO REDUCE THE RISK OF FIRE OR ELECTRIC SHOCK, CAREFULLY FOLLOW THESE INSTRUCTIONS.

FOR CONNECTION TO A SUPPLY NOT IN THE U.S.A., USE AN ATTACHMENT PLUG ADAPTOR OF THE PROPER CONFIGURATION FOR THE POWER OUTLET.

THIS POWER UNIT IS INTENDED TO BE CORRECTLY ORIENTED IN THE A VERTICAL OR HORIZONTAL OR FLOUR MOUNT POSITION.

Consumer Information on Wireless Phones

The U.S. Food and Drug Administration (FDA) has published a series of Questions and Answers for consumers relating to radio frequency (RF) exposure from wireless phones. The FDA publication includes the following information:

What kinds of phones are the subject of this update?

The term wireless phone refers here to hand-held wireless phones with built-in antennas, often called "cell," "mobile," or "PCS" phones. These types of

wireless phones can expose the user to measurable radio frequency energy (RF) because of the short distance between the phone and the user's head. These RF exposures are limited by Federal Communications Commission safety guidelines that were developed with the advice of FDA and other federal health and safety agencies. When the phone is located at greater distances from the user, the exposure to RF is drastically lower because a person's RF exposure decreases rapidly with increasing distance from the source. The so-called "cordless phones," which have a base unit connected to the telephone wiring in a house, typically operate at far lower power levels, and thus produce RF exposures well within the FCC's compliance limits.

Do wireless phones pose a health hazard?

The available scientific evidence does not show that any health problems are associated with using wireless phones. There is no proof, however, that wireless phones are absolutely safe. Wireless phones emit low levels of radio frequency energy (RF) in the microwave range while being used. They also emit

very low levels of RF when in the stand-by mode. Whereas high levels of RF can produce health effects (by heating tissue), exposure to low level RF that does not produce heating effects causes no known adverse health effects. Many studies of low level RF exposures have not found any biological effects. Some studies have suggested that some biological effects may occur, but such findings have not been confirmed by additional research. In some cases, other researchers have had difficulty in reproducing those studies, or in determining the reasons for inconsistent results.

What is FDA's role concerning the safety of wireless phones?

Under the law, FDA does not review the safety of radiation-emitting consumer products such as wireless phones before they can be sold, as it does with new drugs or medical devices. However, the agency has authority to take action if wireless phones are shown to emit radio frequency energy (RF) at a level that is hazardous to the user. In such a case, FDA could require the manufacturers of wireless phones to notify

users of the health hazard and to repair, replace or recall the phones so that the hazard no longer exists.

Although the existing scientific data do not justify FDA regulatory actions, FDA has urged the wireless phone industry to take a number of steps, including the following:

- Support needed research into possible biological effects of RF of the type emitted by wireless phones;
- Design wireless phones in a way that minimizes any RF exposure to the user that is not necessary for device function; and
- Cooperate in providing users of wireless phones with the best possible information on possible effects of wireless phone use on human health.

FDA belongs to an interagency working group of the federal agencies that have responsibility for different aspects of RF safety to ensure coordinated efforts at the federal level. The following agencies belong to this working group:

Health and safety information

- National Institute for Occupational Safety and Health
- Environmental Protection Agency
- Federal Communications Commission
- Occupational Safety and Health Administration
- National Telecommunications and Information Administration

The National Institutes of Health participates in some interagency working group activities, as well.

FDA shares regulatory responsibilities for wireless phones with the Federal Communications Commission (FCC). All phones that are sold in the United States must comply with FCC safety guidelines that limit RF exposure. FCC relies on FDA and other health agencies for safety questions about wireless phones.

FCC also regulates the base stations that the wireless phone networks rely upon. While these base stations operate at higher power than do the wireless phones themselves, the RF exposures that people get from these base stations are typically thousands of times lower than those they can get from wireless phones.

Base stations are thus not the primary subject of the safety questions discussed in this document.

What are the results of the research done already?

The research done thus far has produced conflicting results, and many studies have suffered from flaws in their research methods. Animal experiments investigating the effects of radio frequency energy (RF) exposures characteristic of wireless phones have yielded conflicting results that often cannot be repeated in other laboratories. A few animal studies, however, have suggested that low levels of RF could accelerate the development of cancer in laboratory animals. However, many of the studies that showed increased tumor development used animals that had been genetically engineered or treated with cancer-causing chemicals so as to be pre-disposed to develop cancer in absence of RF exposure. Other studies exposed the animals to RF for up to 22 hours per day. These conditions are not similar to the conditions under which people use wireless phones, so we don't

know with certainty what the results of such studies mean for human health.

Three large epidemiology studies have been published since December 2000. Between them, the studies investigated any possible association between the use of wireless phones and primary brain cancer, glioma, meningioma, or acoustic neuroma, tumors of the brain or salivary gland, leukemia, or other cancers. None of the studies demonstrated the existence of any harmful health effects from wireless phones RF exposures. However, none of the studies can answer questions about long-term exposures, since the average period of phone use in these studies was around three years.

What research is needed to decide whether RF exposure from wireless phones poses a health risk?

A combination of laboratory studies and epidemiological studies of people actually using wireless phones would provide some of the data that are needed. Lifetime animal exposure studies could be completed in a few years. However, very large numbers of animals would be needed to provide

reliable proof of a cancer promoting effect if one exists.

Epidemiological studies can provide data that is directly applicable to human populations, but ten or more years' follow-up may be needed to provide answers about some health effects, such as cancer. This is because the interval between the time of exposure to a cancer-causing agent and the time tumors develop - if they do - may be many, many years. The interpretation of epidemiological studies is hampered by difficulties in measuring actual RF exposure during day-to-day use of wireless phones. Many factors affect this measurement, such as the angle at which the phone is held, or which model of phone is used.

What is FDA doing to find out more about the possible health effects of wireless phone RF?

FDA is working with the U.S. National Toxicology Program and with groups of investigators around the world to ensure that high priority animal studies are conducted to address important questions about the effects of exposure to radio frequency energy (RF).

Health and safety information

FDA has been a leading participant in the World Health Organization international Electromagnetic Fields (EMF) Project since its inception in 1996. An influential result of this work has been the development of a detailed agenda of research needs that has driven the establishment of new research programs around the world. The Project has also helped develop a series of public information documents on EMF issues.

FDA and Cellular Telecommunications & Internet Association (CTIA) have a formal Cooperative Research and Development Agreement (CRADA) to do research on wireless phone safety. FDA provides the scientific oversight, obtaining input from experts in government, industry, and academic organizations. CTIA-funded research is conducted through contracts to independent investigators. The initial research will include both laboratory studies and studies of wireless phone users. The CRADA will also include a broad assessment of additional research needs in the context of the latest research developments around the world.

What steps can I take to reduce my exposure to radio frequency energy from my wireless phone?

If there is a risk from these products - and at this point we do not know that there is - it is probably very small. But if you are concerned about avoiding even potential risks, you can take a few simple steps to minimize your exposure to radio frequency energy (RF). Since time is a key factor in how much exposure a person receives, reducing the amount of time spent using a wireless phone will reduce RF exposure.

- If you must conduct extended conversations by wireless phone every day, you could place more distance between your body and the source of the RF, since the exposure level drops off dramatically with distance. For example, you could use a headset and carry the wireless phone away from your body or use a wireless phone connected to a remote antenna.

Again, the scientific data do not demonstrate that wireless phones are harmful. But if you are concerned about the RF exposure from these products, you can use measures like those described above to reduce your RF exposure from wireless phone use.

What about children using wireless phones?

The scientific evidence does not show a danger to users of wireless phones, including children and teenagers. If you want to take steps to lower exposure to radio frequency energy (RF), the measures described above would apply to children and teenagers using wireless phones. Reducing the time of wireless phone use and increasing the distance between the user and the RF source will reduce RF exposure.

Some groups sponsored by other national governments have advised that children be discouraged from using wireless phones at all. For example, the government in the United Kingdom distributed leaflets containing such a recommendation in December 2000. They noted that no evidence exists

that using a wireless phone causes brain tumors or other ill effects. Their recommendation to limit wireless phone use by children was strictly precautionary; it was not based on scientific evidence that any health hazard exists.

Do hands-free kits for wireless phones reduce risks from exposure to RF emissions?

Since there are no known risks from exposure to RF emissions from wireless phones, there is no reason to believe that hands-free kits reduce risks. Hands-free kits can be used with wireless phones for convenience and comfort. These systems reduce the absorption of RF energy in the head because the phone, which is the source of the RF emissions, will not be placed against the head. On the other hand, if the phone is mounted against the waist or other part of the body during use, then that part of the body will absorb more RF energy. Wireless phones marketed in the U.S. are required to meet safety requirements regardless of whether they are used against the head or against the body. Either configuration should result in compliance with the safety limit.

Health and safety information

Health and safety information

Do wireless phone accessories that claim to shield the head from RF radiation work?

Since there are no known risks from exposure to RF emissions from wireless phones, there is no reason to believe that accessories that claim to shield the head from those emissions reduce risks. Some products that claim to shield the user from RF absorption use special phone cases, while others involve nothing more than a metallic accessory attached to the phone. Studies have shown that these products generally do not work as advertised. Unlike "hand-free" kits, these so-called "shields" may interfere with proper operation of the phone. The phone may be forced to boost its power to compensate, leading to an increase in RF absorption. In February 2002, the Federal Trade Commission (FTC) charged two companies that sold devices that claimed to protect wireless phone users from radiation with making false and unsubstantiated claims. According to FTC, these defendants lacked a reasonable basis to substantiate their claim.

What about wireless phone interference with medical equipment?

Radio frequency energy (RF) from wireless phones can interact with some electronic devices. For this reason, FDA helped develop a detailed test method to measure electromagnetic interference (EMI) of implanted cardiac pacemakers and defibrillators from wireless telephones. This test method is now part of a standard sponsored by the Association for the Advancement of Medical Instrumentation (AAMI). The final draft, a joint effort by FDA, medical device manufacturers, and many other groups, was completed in late 2000. This standard will allow manufacturers to ensure that cardiac pacemakers and defibrillators are safe from wireless phone EMI. FDA has tested wireless phones and helped develop a voluntary standard sponsored by the Institute of Electrical and Electronic Engineers (IEEE). This standard specifies test methods and performance requirements for hearing aids and wireless phones so that no interference occurs when a person uses a compatible phone and a compatible hearing aid at the same time. This standard was approved by the IEEE in 2000.

FDA continues to monitor the use of wireless phones for possible interactions with other medical devices. Should harmful interference be found to occur, FDA will conduct testing to assess the interference and work to resolve the problem.

Additional information on the safety of RF exposures from various sources can be obtained from the following organizations:

- FCC RF Safety Program:
<http://www.fcc.gov/oet/rfsafety/>
- Environmental Protection Agency (EPA):
<http://www.epa.gov/radiation/>
- Occupational Safety and Health Administration's (OSHA):
<http://www.osha.gov/SLTC/radiofrequencyradiation/index.html>
- National institute for Occupational Safety and Health (NIOSH):
<http://www.cdc.gov/niosh/homepage.html>
- World health Organization (WHO):
<http://www.who.int/peh-emf/>

- International Commission on Non-Ionizing Radiation Protection:
<http://www.icnirp.de>
- Radiation Protection Division of Health Protection Agency (UK):
<http://www.hpa.org.uk/radiation/>
- Updated 4/3/2002: US Food and Drug Administration
<http://www.fda.gov/cellphones>

Road Safety

Your wireless phone gives you the powerful ability to communicate by voice, almost anywhere, anytime. But an important responsibility accompanies the benefits of wireless phones, one that every user must uphold.

When driving a car, driving is your first responsibility. When using your wireless phone behind the wheel of a car, practice good common sense and remember the following tips:

Health and safety information

1. Get to know your wireless phone and its features, such as speed dial and redial. If available, these features help you to place your call without taking your attention off the road.
2. When available, use a hands-free device. If possible, add an additional layer of convenience and safety to your wireless phone with one of the many hands free accessories available today.
3. Position your wireless phone within easy reach. Be able to access your wireless phone without removing your eyes from the road. If you get an incoming call at an inconvenient time, let your voice mail answer it for you.
4. Let the person you are speaking with know you are driving; if necessary, suspend the call in heavy traffic or hazardous weather conditions. Rain, sleet, snow, ice and even heavy traffic can be hazardous.
5. Do not take notes or look up phone numbers while driving. Jotting down a "to do" list or flipping through your address book takes attention away from your primary responsibility, driving safely.
6. Dial sensibly and assess the traffic; if possible, place calls when you are not moving or before pulling into traffic. Try to plan calls when your car will be stationary. If you need to make a call while moving, dial only a few numbers, check the road and your mirrors, then continue.
7. Do not engage in stressful or emotional conversations that may be distracting. Make people you are talking with aware you are driving and suspend conversations that have the potential to divert your attention from the road.
8. Use your wireless phone to call for help. Dial 9-1-1 or other local emergency number in the case of fire, traffic accident or medical emergencies. Remember, it is a free call on your wireless phone!
9. Use your wireless phone to help others in emergencies. If you see an auto accident, crime in progress or other serious emergency where lives are in danger, call 9-1-1 or other local emergency number, as you would want others to do for you.

10. Call roadside assistance or a special non-emergency wireless assistance number when necessary. If you see a broken-down vehicle posing no serious hazard, a broken traffic signal, a minor traffic accident where no one appears injured, or a vehicle you know to be stolen, call roadside assistance or other special non-emergency number.

"The wireless industry reminds you to use your phone safely when driving."

For more information, please call 1-888-901-SAFE, or visit our web-site www.wow-com.com

Provided by the Cellular Telecommunications & Internet Association.

Operating Environment

Remember to follow any special regulations in force in any area and always switch your phone off whenever it is forbidden to use it, or when it may cause interference or danger. When connecting the phone or any accessory to another device, read its user's guide

for detailed safety instructions. Do not connect incompatible products.

As with other mobile radio transmitting equipment, users are advised that for the satisfactory operation of the equipment and for the safety of personnel, it is recommended that the equipment should only be used in the normal operating position (held to your ear with the antenna pointing over your shoulder if you are using an external antenna).

Using Your Phone Near Other Electronic Devices

Most modern electronic equipment is shielded from radio frequency (RF) signals. However, certain electronic equipment may not be shielded against the RF signals from your wireless phone. Consult the manufacturer to discuss alternatives.

Pacemakers

Pacemaker manufacturers recommend that a minimum distance of 15 cm (6 inches) be maintained between a wireless phone and a pacemaker to avoid potential interference with the pacemaker.

Health and safety information

These recommendations are consistent with the independent research and recommendations of Wireless Technology Research.

Persons with pacemakers:

- should always keep the phone more than 15 cm (6 inches) from their pacemaker when the phone is switched on.
- should not carry the phone in a breast pocket.
- should use the ear opposite the pacemaker to minimize potential interference.

If you have any reason to suspect that interference is taking place, switch your phone off immediately.

Hearing Aid Compatibility with Mobile Phones

When some mobile phones are used near some hearing devices (hearing aids and cochlear implants), users may detect a buzzing, humming, or whining noise. Some hearing devices are more immune than others to this interference noise, and phones also vary in the amount of interference they generate.

The wireless telephone industry has developed ratings for some of their mobile phones, to assist hearing device users in finding phones that may be compatible with their hearing devices. Not all phones have been rated. Phones that are rated have the rating on their box or a label on the box.

The ratings are not guarantees. Results will vary depending on the user's hearing device and hearing loss. If your hearing device happens to be vulnerable to interference, you may not be able to use a rated phone successfully. Trying out the phone with your hearing device is the best way to evaluate it for your personal needs.

M-Ratings: Phones rated M3 or M4 meet FCC requirements and are likely to generate less interference to hearing devices than phones that are not labeled. M4 is the better/higher of the two ratings.

T-Ratings: Phones rated T3 or T4 meet FCC requirements and are likely to be more usable with a hearing device's telecoil ("T Switch" or "Telephone Switch") than unrated phones. T4 is the better/higher of the two ratings. (Note that not all hearing devices have telecoils in them.)

Hearing devices may also be measured for immunity to this type of interference. Your hearing device manufacturer or hearing health professional may help you find results for your hearing device. The more immune your hearing aid is, the less likely you are to experience interference noise from mobile phones.

Other Medical Devices

If you use any other personal medical devices, consult the manufacturer of your device to determine if it is adequately shielded from external RF energy. Your physician may be able to assist you in obtaining this information. Switch your phone off in health care facilities when any regulations posted in these areas instruct you to do so. Hospitals or health care facilities may be using equipment that could be sensitive to external RF energy.

Vehicles

RF signals may affect improperly installed or inadequately shielded electronic systems in motor vehicles. Check with the manufacturer or its representative regarding your vehicle.

You should also consult the manufacturer of any equipment that has been added to your vehicle.

Posted Facilities

Switch your phone off in any facility where posted notices require you to do so.

Potentially Explosive Environments

Switch your phone off when in any area with a potentially explosive atmosphere and obey all signs and instructions. Sparks in such areas could cause an explosion or fire resulting in bodily injury or even death.

Users are advised to switch the phone off while at a refueling point (service station). Users are reminded of the need to observe restrictions on the use of radio equipment in fuel depots (fuel storage and distribution areas), chemical plants or where blasting operations are in progress.

Areas with a potentially explosive atmosphere are often but not always clearly marked. They include below deck on boats, chemical transfer or storage

Health and safety information

facilities, vehicles using liquefied petroleum gas (such as propane or butane), areas where the air contains chemicals or particles, such as grain, dust or metal powders, and any other area where you would normally be advised to turn off your vehicle engine.

Emergency Calls

This phone, like any wireless phone, operates using radio signals, wireless and landline networks as well as user-programmed functions, which cannot guarantee connection in all conditions. Therefore, you should never rely solely on any wireless phone for essential communications (medical emergencies, for example).

Remember, to make or receive any calls the phone must be switched on and in a service area with adequate signal strength. Emergency calls may not be possible on all wireless phone networks or when certain network services and/or phone features are in use. Check with local service providers.

To make an emergency call:

1. If the phone is not on, switch it on.

2. Key in the emergency number for your present location (for example, 911 or other official emergency number). Emergency numbers vary by location.
3. Press the [↵] key.

If certain features are in use (call barring, for example), you may first need to deactivate those features before you can make an emergency call. Consult this document and your local cellular service provider.

When making an emergency call, remember to give all the necessary information as accurately as possible. Remember that your phone may be the only means of communication at the scene of an accident; do not cut off the call until given permission to do so.

Restricting Children's access to your Phone

Your phone is not a toy. Children should not be allowed to play with it because they could hurt themselves and others, damage the phone or make calls that increase your phone bill.

FCC Notice and Cautions

FCC Notice

The phone may cause TV or radio interference if used in close proximity to receiving equipment. The FCC can require you to stop using the phone if such interference cannot be eliminated.

Vehicles using liquefied petroleum gas (such as propane or butane) must comply with the National Fire Protection Standard (NFPA-58). For a copy of this standard, contact the National Fire Protection Association, One Batterymarch Park, Quincy, MA 02269, Attn: Publication Sales Division.

Cautions

Any changes or modifications to your phone not expressly approved in this document could void your warranty for this equipment, and void your authority to operate this equipment. Only use approved batteries, antennas and chargers. The use of any unauthorized accessories may be dangerous and void the phone warranty if said accessories cause damage or a defect to the phone.

Although your phone is quite sturdy, it is a complex piece of equipment and can be broken. Avoid dropping, hitting, bending or sitting on it.

Other Important Safety Information

- Only qualified personnel should service the phone or install the phone in a vehicle. Faulty installation or service may be dangerous and may invalidate any warranty applicable to the device.
- Check regularly that all wireless phone equipment in your vehicle is mounted and operating properly.
- Do not store or carry flammable liquids, gases or explosive materials in the same compartment as the phone, its parts or accessories.
- For vehicles equipped with an air bag, remember that an air bag inflates with great force. Do not place objects, including both installed or portable wireless equipment in the area over the air bag or in the air bag deployment area. If wireless equipment is improperly installed and the air bag inflates, serious injury could result.

Health and safety information

- Switch your phone off before boarding an aircraft. The use of wireless phone in aircraft is illegal and may be dangerous to the aircraft's operation.
- Failure to observe these instructions may lead to the suspension or denial of telephone services to the offender, or legal action, or both.

Product Performance

Getting the Most Out of Your Signal Reception

The quality of each call you make or receive depends on the signal strength in your area. Your phone informs you of the current signal strength by displaying a number of bars next to the signal strength icon. The more bars displayed, the stronger the signal.

If you're inside a building, being near a window may give you better reception.

Understanding the Power Save Feature

If your phone is unable to find a signal after 15 minutes of searching, a Power Save feature is automatically activated. If your phone is active, it periodically rechecks service availability or you can check it yourself by pressing any key.

119

Anytime the Power Save feature is activated, a message displays on the screen. When a signal is found, your phone returns to standby mode.

Understanding How Your Phone Operates

Your phone is basically a radio transmitter and receiver. When it's turned on, it receives and transmits radio frequency (RF) signals. When you use your phone, the system handling your call controls the power level. This power can range from 0.006 watts to 0.2 watts in digital mode.

Maintaining Your Phone's Peak Performance

For the best care of your phone, only authorized personnel should service your phone and accessories. Faulty service may void the warranty.

There are several simple guidelines to operating your phone properly and maintaining safe, satisfactory service.

- If your phone is equipped with an external antenna, hold the phone with the antenna raised, fully-extended and over your shoulder.
- Do not hold, bend or twist the phone's antenna, if applicable.

- Do not use the phone if the antenna is damaged.
- If your phone is equipped with an internal antenna, obstructing the internal antenna could inhibit call performance.
- Speak directly into the phone's receiver.
- Avoid exposing your phone and accessories to rain or liquid spills. If your phone does get wet, immediately turn the power off and remove the battery.

Availability of Various Features/Ring Tones

Many services and features are network dependent and may require additional subscription and/or usage charges. Not all features are available for purchase or use in all areas. Downloadable Ring Tones may be available at an additional cost. Other conditions and restrictions may apply. See your service provider for additional information.

Battery Standby and Talk Time

Standby and talk times will vary depending on phone usage patterns and conditions. Battery power consumption depends on factors such as network configuration, signal strength, operating temperature, features selected, frequency of calls, and voice, data, and other application usage patterns.

Battery Precautions

- Avoid dropping the cell phone. Dropping it, especially on a hard surface, can potentially cause damage to the phone and battery. If you suspect damage to the phone or battery, take it to a service center for inspection.
- Never use any charger or battery that is damaged in any way.
- Use the battery only for its intended purpose.
- If you use the phone near the network's base station, it uses less power; talk and standby time are greatly affected by the signal strength on the cellular network and the parameters set by the network operator.

Health and safety information

- Follow battery usage, storage and charging guidelines found in the user's guide.
- Battery charging time depends on the remaining battery charge and the type of battery and charger used. The battery can be charged and discharged hundreds of times, but it will gradually wear out. When the operation time (talk time and standby time) is noticeably shorter than normal, it is time to buy a new battery.
- If left unused, a fully charged battery will discharge itself over time.
- Use only Samsung-approved batteries and recharge your battery only with Samsung-approved chargers. When a charger is not in use, disconnect it from the power source. Do not leave the battery connected to a charger for more than a week, since overcharging may shorten its life.
- Do not use incompatible cell phone batteries and chargers. Some Web sites and second-hand dealers, not associated with reputable manufacturers and carriers, might be selling incompatible or even counterfeit batteries and chargers.
- Consumers should purchase manufacturer or carrier recommended products and accessories. If unsure about whether a replacement battery or charger is compatible, contact the manufacturer of the battery or charger.
- Extreme temperatures will affect the charging capacity of your battery: it may require cooling or warming first.
- Do not leave the battery in hot or cold places, such as in a car in summer or winter conditions, as you will reduce the capacity and lifetime of the battery. Always try to keep the battery at room temperature. A phone with a hot or cold battery may temporarily not work, even when the battery is fully charged. Li-ion batteries are particularly affected by temperatures below 0 °C (32 °F).
- Do not place the phone in areas that may get very hot, such as on or near a cooking surface, cooking appliance, iron, or radiator.
- Do not get your phone or battery wet. Even though they will dry and appear to operate normally, the circuitry could slowly corrode and pose a safety hazard.

- Do not short-circuit the battery. Accidental short-circuiting can occur when a metallic object (coin, clip or pen) causes a direct connection between the + and - terminals of the battery (metal strips on the battery), for example when you carry a spare battery in a pocket or bag. Short-circuiting the terminals may damage the battery or the object causing the short-circuiting.
- Do not permit a battery out of the phone to come in contact with metal objects, such as coins, keys or jewelry.
- Do not crush, puncture or put a high degree of pressure on the battery as this can cause an internal short-circuit, resulting in overheating.
- Dispose of used batteries in accordance with local regulations. In some areas, the disposal of batteries in household or business trash may be prohibited. For safe disposal options for Li-Ion batteries, contact your nearest Samsung authorized service center. Always recycle. Do not dispose of batteries in a fire.

Samsung Mobile Products and Recycling

Samsung cares for the environment and encourages its customers to recycle Samsung mobile phones and genuine Samsung accessories.

Go to:

<http://www.samsungwireless.com/recycling.htm> for more information.

Care and Maintenance

Your phone is a product of superior design and craftsmanship and should be treated with care. The suggestions below will help you fulfill any warranty obligations and allow you to enjoy this product for many years.

- Keep the phone and all its parts and accessories out of the reach of small children.
- Keep the phone dry. Precipitation, humidity and liquids contain minerals that will corrode electronic circuits.

Health and safety information

- Do not use the phone with a wet hand. Doing so may cause an electric shock to you or damage to the phone.
- Do not use or store the phone in dusty, dirty areas, as its moving parts may be damaged.
- Do not store the phone in hot areas. High temperatures can shorten the life of electronic devices, damage batteries, and warp or melt certain plastics.
- Do not store the phone in cold areas. When the phone warms up to its normal operating temperature, moisture can form inside the phone, which may damage the phone's electronic circuit boards.
- Do not drop, knock or shake the phone. Rough handling can break internal circuit boards.
- Do not use harsh chemicals, cleaning solvents or strong detergents to clean the phone. Wipe it with a soft cloth slightly dampened in a mild soap-and-water solution.
- Do not paint the phone. Paint can clog the device's moving parts and prevent proper operation.
- Do not put the phone in or on heating devices, such as a microwave oven, a stove or a radiator. The phone may explode when overheated.
- If your phone is equipped with an external antenna, use only the supplied or an approved replacement antenna. Unauthorized antennas or modified accessories may damage the phone and violate regulations governing radio devices.
- If the phone, battery, charger or any accessory is not working properly, take it to your nearest qualified service facility. The personnel there will assist you, and if necessary, arrange for service.

Standard Limited Warranty

What is Covered and For How Long?

SAMSUNG TELECOMMUNICATIONS AMERICA, L.P. ("SAMSUNG") warrants to the original purchaser ("Purchaser") that SAMSUNG's Phones and accessories ("Products") are free from defects in material and workmanship under normal use and service for the period commencing upon the date of purchase and continuing for the following specified period of time after that date:

Phone	1 Year
Batteries	1 Year
Leather Case/ Pouch	90 Days
Holster	90 Days
Other Phone Accessories	1 Year

What is Not Covered?

This Limited Warranty is conditioned upon proper use of Product by Purchaser. This Limited Warranty does not cover: (a) defects or damage resulting from

accident, misuse, abuse, neglect, unusual physical, electrical or electromechanical stress, or modification of any part of Product, including antenna, or cosmetic damage; (b) equipment that has the serial number removed or made illegible; (c) any plastic surfaces or other externally exposed parts that are scratched or damaged due to normal use; (d) malfunctions resulting from the use of Product in conjunction with accessories, products, or ancillary/ peripheral equipment not furnished or approved by SAMSUNG; (e) defects or damage from improper testing, operation, maintenance, installation, or adjustment; (f) installation, maintenance, and service of Product, or (g) Product used or purchased outside the United States or Canada. This Limited Warranty covers batteries only if battery capacity falls below 80% of rated capacity or the battery leaks, and this Limited Warranty does not cover any battery if (i) the battery has been charged by a battery charger not specified or approved by SAMSUNG for charging the battery, (ii) any of the seals on the battery are broken or show evidence of tampering, or (iii) the battery has been

Standard Limited Warranty

used in equipment other than the SAMSUNG phone for which it is specified.

What are SAMSUNG's Obligations? During the applicable warranty period, SAMSUNG will repair or replace, at SAMSUNG's sole option, without charge to Purchaser, any defective component part of Product. To obtain service under this Limited Warranty, Purchaser must return Product to an authorized phone service facility in an adequate container for shipping, accompanied by Purchaser's sales receipt or comparable substitute proof of sale showing the date of purchase, the serial number of Product and the sellers' name and address. To obtain assistance on where to deliver the Product, call Samsung Customer Care at 1-888-987-4357. Upon receipt, SAMSUNG will promptly repair or replace the defective Product. SAMSUNG may, at SAMSUNG's sole option, use rebuilt, reconditioned, or new parts or components when repairing any Product or replace Product with a rebuilt, reconditioned or new Product. Repaired/replaced leather cases, pouches and holsters will be warranted for a period of ninety (90) days. All other

repaired/replaced Product will be warranted for a period equal to the remainder of the original Limited Warranty on the original Product or for 90 days, whichever is longer. All replaced parts, components, boards and equipment shall become the property of SAMSUNG. If SAMSUNG determines that any Product is not covered by this Limited Warranty, Purchaser must pay all parts, shipping, and labor charges for the repair or return of such Product.

WHAT ARE THE LIMITS ON SAMSUNG'S WARRANTY/LIABILITY?

EXCEPT AS SET FORTH IN THE EXPRESS WARRANTY CONTAINED HEREIN, PURCHASER TAKES THE PRODUCT "AS IS," AND SAMSUNG MAKES NO WARRANTY OR REPRESENTATION AND THERE ARE NO CONDITIONS, EXPRESS OR IMPLIED, STATUTORY OR OTHERWISE, OF ANY KIND WHATSOEVER WITH RESPECT TO THE PRODUCT, INCLUDING BUT NOT LIMITED TO:

- "THE MERCHANTABILITY OF THE PRODUCT OR ITS FITNESS FOR ANY PARTICULAR PURPOSE OR USE;
- "WARRANTIES OF TITLE OR NON-INFRINGEMENT;

- "DESIGN, CONDITION, QUALITY, OR PERFORMANCE OF THE PRODUCT;
- "THE WORKMANSHIP OF THE PRODUCT OR THE COMPONENTS CONTAINED THEREIN; OR
- "COMPLIANCE OF THE PRODUCT WITH THE REQUIREMENTS OF ANY LAW, RULE, SPECIFICATION OR CONTRACT PERTAINING THERETO.

NOTHING CONTAINED IN THE INSTRUCTION MANUAL SHALL BE CONSTRUED TO CREATE AN EXPRESS WARRANTY OF ANY KIND WHATSOEVER WITH RESPECT TO THE PRODUCT. ALL IMPLIED WARRANTIES AND CONDITIONS THAT MAY ARISE BY OPERATION OF LAW, INCLUDING IF APPLICABLE THE IMPLIED WARRANTIES OF MERCHANTABILITY AND FITNESS FOR A PARTICULAR PURPOSE, ARE HEREBY LIMITED TO THE SAME DURATION OF TIME AS THE EXPRESS WRITTEN WARRANTY STATED HEREIN. SOME STATES/PROVINCES DO NOT ALLOW LIMITATIONS ON HOW LONG AN IMPLIED WARRANTY LASTS, SO THE ABOVE LIMITATION MAY NOT APPLY TO YOU. IN ADDITION, SAMSUNG SHALL NOT BE

LIABLE FOR ANY DAMAGES OF ANY KIND RESULTING FROM THE PURCHASE, USE, OR MISUSE OF, OR INABILITY TO USE THE PRODUCT OR ARISING DIRECTLY OR INDIRECTLY FROM THE USE OR LOSS OF USE OF THE PRODUCT OR FROM THE BREACH OF THE EXPRESS WARRANTY, INCLUDING INCIDENTAL, SPECIAL, CONSEQUENTIAL OR SIMILAR DAMAGES, OR LOSS OF ANTICIPATED PROFITS OR BENEFITS, OR FOR DAMAGES ARISING FROM ANY TORT (INCLUDING NEGLIGENCE OR GROSS NEGLIGENCE) OR FAULT COMMITTED BY SAMSUNG, ITS AGENTS OR EMPLOYEES, OR FOR ANY BREACH OF CONTRACT OR FOR ANY CLAIM BROUGHT AGAINST PURCHASER BY ANY OTHER PARTY. SOME STATES/PROVINCES DO NOT ALLOW THE EXCLUSION OR LIMITATION OF INCIDENTAL OR CONSEQUENTIAL DAMAGES, SO THE ABOVE LIMITATION OR EXCLUSION MAY NOT APPLY TO YOU. THIS WARRANTY GIVES YOU SPECIFIC LEGAL RIGHTS, AND YOU MAY ALSO HAVE OTHER RIGHTS, WHICH VARY FROM STATE TO STATE/PROVINCE TO PROVINCE. THIS LIMITED WARRANTY SHALL NOT EXTEND TO ANYONE OTHER THAN THE ORIGINAL PURCHASER OF THIS PRODUCT AND STATES

Standard Limited Warranty

Standard Limited Warranty

PURCHASER'S EXCLUSIVE REMEDY. IF ANY PORTION OF THIS LIMITED WARRANTY IS HELD ILLEGAL OR UNENFORCEABLE BY REASON OF ANY LAW, SUCH PARTIAL ILLEGALITY OR UNENFORCEABILITY SHALL NOT AFFECT THE ENFORCEABILITY FOR THE REMAINDER OF THIS LIMITED WARRANTY WHICH PURCHASER ACKNOWLEDGES IS AND WILL ALWAYS BE CONSTRUED TO BE LIMITED BY ITS TERMS OR AS LIMITED AS THE LAW PERMITS. THE PARTIES UNDERSTAND THAT THE PURCHASER MAY USE THIRD-PARTY SOFTWARE OR EQUIPMENT IN CONJUNCTION WITH THE PRODUCT. SAMSUNG MAKES NO WARRANTIES OR REPRESENTATIONS AND THERE ARE NO CONDITIONS, EXPRESS OR IMPLIED, STATUTORY OR OTHERWISE, AS TO THE QUALITY, CAPABILITIES, OPERATIONS, PERFORMANCE OR SUITABILITY OF ANY THIRDPARTY SOFTWARE OR EQUIPMENT, WHETHER SUCH THIRD-PARTY SOFTWARE OR EQUIPMENT IS INCLUDED WITH THE PRODUCT DISTRIBUTED BY SAMSUNG OR OTHERWISE, INCLUDING THE ABILITY TO INTEGRATE ANY SUCH SOFTWARE OR EQUIPMENT WITH THE PRODUCT. THE QUALITY, CAPABILITIES, OPERATIONS,

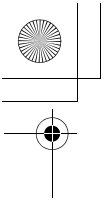
PERFORMANCE AND SUITABILITY OF ANY SUCH THIRD-PARTY SOFTWARE OR EQUIPMENT LIE SOLELY WITH THE PURCHASER AND THE DIRECT VENDOR, OWNER OR SUPPLIER OF SUCH THIRD-PARTY SOFTWARE OR EQUIPMENT, AS THE CASE MAY BE.

This Limited Warranty allocates risk of Product failure between Purchaser and SAMSUNG, and SAMSUNG's Product pricing reflects this allocation of risk and the limitations of liability contained in this Limited Warranty. The agents, employees, distributors, and dealers of SAMSUNG are not authorized to make modifications to this Limited Warranty, or make additional warranties binding on SAMSUNG. Accordingly, additional statements such as dealer advertising or presentation, whether oral or written, do not constitute warranties by SAMSUNG and should not be relied upon.

Samsung Telecommunications America, L.P.
1000 Klein Street
Plano, Texas 75074

Phone: 1-800-SAMSUNG

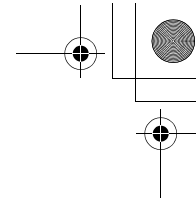
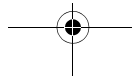
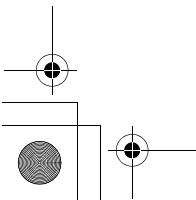
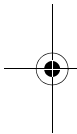
Phone: 1-888-987-HELP (4357)



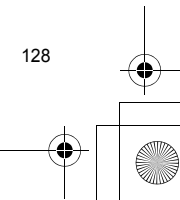
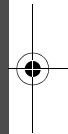
©2006 Samsung Telecommunications America, L.P. All rights reserved.

No reproduction in whole or in part allowed without prior written approval. Specifications and availability subject to change without notice.

Printed in Korea



Standard Limited Warranty



Index

A

- ABC mode, text input • 26
- Alarm • 75
- Answering
 - call • 29
 - second call • 30
- Anykey answer • 92
- Auto redial • 92

B

- Background image • 93
- Backlight time, set
 - display • 95
 - keypad • 95
- Band selection • 97
- Barring, calls • 96
- Battery
 - charging • 6
 - low indicator • 7
- Bluetooth
 - receiving, data • 47
 - sending, data • 47
 - settings • 45
- Broadcast messages • 67
- Browser, web • 49

C

- Calculator • 81
- Calendar • 75
- Call records
 - dialed • 33
 - missed • 33
 - received • 33
- Call time • 33
- Caller group • 36
- Caller ID • 97
- Calls
 - answering • 29
 - barring • 96
 - forwarding • 95
 - holding • 30
 - making • 28
 - redialing • 29
 - rejecting • 29
 - waiting • 97
- Camera
 - photos • 83
 - videos • 86
- CB (Cell Broadcast) messages • 67
- Characters, enter • 26

- Connection tone • 95
- Converter • 81
- Creating messages
 - e-mail • 54
 - MMS • 53
 - SMS • 52

D

- Date, set • 89
- Deleting
 - calendar items • 79
 - call logs • 33
 - contacts • 34, 38
 - e-mail • 59, 61
 - MMS • 57, 58, 61
 - SMS • 56, 58, 61
- Dialed calls • 33
- Dialing display, set • 93
- Display
 - backlight, set • 95
 - brightness • 93
 - icons • 9
 - language • 90
 - layout • 9
 - settings • 93

- Document files • 72
- DRM (Digital Rights Management) • 68
- DTMF tones, send • 31

E

- E-mails
 - creating/sending • 54
 - deleting • 59
 - setting • 64
 - viewing • 59

F

- FDN (Fixed Dialing Number) mode • 99
- File viewer • 72
- Forwarding, calls • 95

G

- Games • 47
- Greeting message • 90

H

- Health and safety • 103
- Holding, call • 30

I

- Icons, description • 9
- Image editor • 43
- Images, downloaded • 69
- Inbox, messages
 - e-mail • 59
 - MMS/SMS • 55
- Input mode, change • 26
- International calls • 28
- Internet • 49

K

- Keypad tones
 - selecting • 94
 - sending/muting • 31
 - volume • 94

L

- Language, select • 90
- Last number, redial • 29
- Light settings • 95
- Locking
 - media contents • 98
 - phone • 98
 - SIM card • 99
- Low battery indicator • 7

M

- Memory card
 - accessing files • 75
 - installing • 24
- Memory status
 - contacts • 38
 - messages • 68
 - my files • 75
 - phone • 99
- Menu style • 93
- Message tone • 94
- Messages
 - cell broadcast • 67
 - configuration • 57
 - e-mail • 54
 - greeting • 90
 - MMS • 53
 - push • 57
 - SMS • 52
- Minute minder • 95
- Missed calls • 33
- MMS messages
 - creating/sending • 53
 - deleting • 57
 - setting • 62
 - viewing • 55
- Multiparty-call • 31

- Music player • 39
- Music, downloaded • 71
- My files • 68

N

- Name card • 37
- Names
 - entering • 26
 - searching • 34
- Network band, select • 97
- Network selection • 97
- Network services • 95
- Numbers
 - searching • 34
 - storing • 35

O

- Offline mode • 92
- Outbox, messages • 58

P

- Password
 - call barring • 96
 - phone • 98

Phone

- display • 9
- icons • 9
- locking • 98

- password • 98
- resetting • 99
- switching on/off • 7
- unpacking • 5

Phonebook

- adding • 35
- deleting • 34, 38
- editing • 34
- managing • 38
- options • 34
- searching • 34
- speed dialing • 37

Photos

- editing • 43
- taking • 83
- viewing • 69
- PIN, change • 98
- PIN2, change • 99
- Power on/off tone • 94
- Privacy • 98
- Problems, solve • 101
- Push messages • 57, 67

R

- Received calls • 33
- Received messages
 - e-mail • 59
 - MMS/SMS • 55

Index

- Recording
 - videos • 86
 - voice memos • 42
- Redialing
 - automatically • 92
 - manually • 29
- Resetting phone • 99
- Ringer
 - incoming calls • 94
 - messages • 94
- Roaming • 97
- S**
- Safety, information • 103
- Security, calls • 98
- Sent, messages • 58
- Shortcut • 90
- Silent mode
 - entering • 13
 - setting • 94
- SIM card
 - inserting • 6
 - locking • 99
- Slide settings • 90
- Slide tone • 94
- SMS messages
 - creating/sending • 52
 - deleting • 56
- setting • 61
- viewing • 55
- Sound settings • 94
- Sounds, downloaded • 71
- Speed dial • 37
- Stopwatch • 82
- Switching on/off
 - microphone • 31
 - phone • 7
- T**
- T9 mode, text input • 27
- Templates, message • 60
- Text, enter • 26
- Time, set • 89
- Timer • 82
- TV out
 - setting • 93
 - viewing on TV screen • 23
- U**
- USB settings • 92
- V**
- Videos
 - playing • 70
 - recording • 86
- Voice recorder
 - playing • 42
 - recording • 42
- Voicemail server • 97
- W**
- Waiting call • 97
- Wallpaper • 93
- Web browser
 - access • 49
 - bookmarks • 50
- World time • 80