



Mortar Board



Alumni Chapter Handbook

1200 Chambers Rd, Suite 201

Columbus, Ohio 43212

Phone: 800-989-6266

Fax: 614-488-4095

Web site: www.mortarboard.org

E-mail: mortar-board@osu.edu

TABLE OF CONTENTS

- PURPOSE OF HANDBOOK..... 3
- BENEFITS OF MORTAR BOARD ALUMNI CHAPTER MEMBERSHIP..... 3
NATIONAL ALUMNI SUSTAINING MEMBERSHIP
- ESTABLISHING A MORTAR BOARD ALUMNI CHAPTER..... 3
GETTING STARTED
ORGANIZATIONAL MEETING
REQUIREMENTS FOR ESTABLISHING A NEW CHAPTER
CHAPTER CHARTER
ANNUAL CONSIDERATIONS
CHAPTER OFFICERS
EMPLOYER IDENTIFICATION NUMBER (EIN)
- ORGANIZATIONAL CHART FOR MORTAR BOARD..... 4
- SAMPLE CONSTITUTION..... 5
- CONSTITUTION FOR MID-NEBRASKA MORTAR BOARD ALUMNI CHAPTER..... 6
- MORTAR BOARD’S PROUD HERITAGE - SINCE 1918 7
- TRADITIONS: MORTAR BOARD POEM & SONGS..... 8
THE TORCH
“THY IDEALS”
“THE MORTAR BOARD ODE”
- MORTAR BOARD NATIONAL FOUNDATION..... 9
ADVANCING SCHOLARSHIP, LEADERSHIP AND SERVICE
THE MORTAR BOARD FELLOWSHIP PROGRAM
CHAPTER AND NATIONAL PROJECT GRANTS
LEADERSHIP DEVELOPMENT
- EXAMPLES OF ALUMNI CHAPTER PROGRAMS 10
MEETINGS AND PROGRAMS - FOR FUN, FELLOWSHIP EDUCATION AND CONNECTION!
- CURRENT MORTAR BOARD CHAPTER ROSTER 11
MAP OF COLLEGIATE CHAPTERS
- ALUMNI CHAPTERS 2006-2007 13
- ALUMNI PARTICIPATION IN INITIATION CEREMONY FOR NEW COLLEGIATE MEMBERS..... 15
- MORTAR BOARD NATIONAL OFFICE SERVICES 25
- CONTACT THE MORTAR BOARD NATIONAL OFFICE..... 25



PURPOSE OF HANDBOOK

This alumni chapter handbook has been developed to provide information for establishing new alumni chapters and to offer information for alumni groups already in existence. Its purpose is to provide:

- The benefits of establishing an alumni chapter to a group of members as well as benefits to individual members;
- Procedures for establishing an alumni chapter including basic requirements for forming a chapter and its annual obligations thereafter;
- Background information about Mortar Board as a national organization and specific information about an alumni chapter's role as part of that organization;
- Examples of alumni chapter programs and a list of current national alumni chapters and contact persons.

BENEFITS OF MORTAR BOARD ALUMNI CHAPTER MEMBERSHIP

Membership in a Mortar Board alumni chapter has many benefits. Not only can alumni meet other Mortar Board members who live in their area, but they have the opportunity to continue involvement at the national level. New contacts often provide personal and career networking opportunities as well.

Alumni chapters can have an impact on collegiate Mortar Board chapters in their area by sponsoring scholarships, collaborating on projects, or providing support through social functions. Each collegiate chapter elects an "alumni contact" person every year who acts as the liaison between the students and alumni. Collegiate chapters may find alumni chapters a good resource for future chapter advisors and for strengthening student and chapter ties to alumni in general. Alumni members can be valuable contacts for graduate school or career information before or after graduation.

Alumni and active members alike can access current information about the national organization through its Web site. The site provides information about report forms, fellowship and chapter grant applications, alumni chapter information, a National Council and Foundation directory and other pertinent information. The Web site address is: www.mortarboard.org.

NATIONAL ALUMNI SUSTAINING MEMBERSHIP

In response to several past national conference resolutions by student delegates, the National Alumni Sustaining Membership program has been established. This membership program is open to all initiated Mortar Board members once they have graduated from college – either by graduation or departure from an undergraduate degree program. Where an alumni chapter does

not exist, involvement can provide a networking opportunity and a chance to connect Mortar Board members from different colleges or universities.

Some of the benefits of the Alumni Sustaining Membership include:

- The *Mortar Board Forum* subscription and alumni news from the National Office.
- The opportunity to continue your support of your initiation chapter, a local chapter, or an alumni chapter.
- A way to continue contributing to the National Foundation in support of graduate fellowships or leadership initiatives
- Being part of an active alumni network for visible extension of the Mortar Board ideals.
- The Alumni Sustaining Membership cost is \$25 per year with \$10 of that fee going to the national organization, \$10 going to the National Foundation, and \$5 going to a chapter of your choice – either collegiate or alumni. Dues are paid and allocated on a calendar year basis. Lifetime membership is \$500 and may be paid over three years. The first year after a member graduates the lifetime fee is only \$300.

ESTABLISHING A MORTAR BOARD ALUMNI CHAPTER

Some alumni chapters are organized by geographical area and include Mortar Board alumni living in that area that were from many different collegiate chapters. Other alumni chapters are organized for the purpose of supporting a particular collegiate chapter and include all initiated members of that collegiate chapter. Every local group determines how and why it wishes to function.

Establishing a Mortar Board alumni chapter in your area can be enjoyable and rewarding. All it takes to organize a chapter is the willingness of a few interested alumni to meet and discuss the possibilities.

GETTING STARTED

Before beginning the process of organizing an alumni chapter you will want to contact the National Office to determine if there is a chapter already in your geographical area. If not, the National Office can provide you with a list of Mortar Board alumni living in your area. Another resource for alumni addresses may be the alumni association of the college or university nearest you. Using these lists, you can contact these alumni and arrange for an organizational meeting.



ORGANIZATIONAL MEETING

The organizational meeting can take place anywhere you choose – in someone’s home, a local restaurant, a local campus if one is available or any other site that is convenient. At this first meeting, you will want to discuss goals for the alumni chapter, brainstorm possible chapter activities, select officers and consider whether to charge dues. You will want to ask a volunteer(s) to draft a constitution for the chapter. A suggested format and a sample constitution can be found on pages 5 and 6 of this handbook.

REQUIREMENTS FOR ESTABLISHING A NEW CHAPTER

There are a few requirements for starting a new alumni chapter. Once the group is established, you will need to submit to the National Office:

- the names of your original members (at least five)
- a list of your officers (both a president and treasurer required)
- a copy of your chapter’s constitution
- a charter fee of \$25

CHAPTER CHARTER

Upon receipt of your request to become an alumni chapter, the National Office will send the chapter a charter. You also will begin receiving all alumni chapter mailings and the official publication of Mortar Board, *The Mortar Board Forum*.

ANNUAL CONSIDERATIONS

After establishing your Mortar Board alumni chapter, the president and treasurer will be required to submit annual reports. The one-page report forms will be sent to your chapter each spring from the National Office. The \$25 annual chapter dues are also payable to the National Office each spring.

CHAPTER OFFICERS

Each alumni chapter determines the type and number of officers and the length of their terms. Most alumni chapters choose to elect a president, vice-president, secretary and treasurer. The president is responsible for presiding over meetings and conducting chapter business. The vice-president’s duties include presiding over meetings and conducting club business in the absence of the president. Some chapters assign the duties of program chair to vice-presidents as well; a second vice-president is sometimes appointed as membership chair. The secretary is responsible for maintaining the attendance record and address lists, as

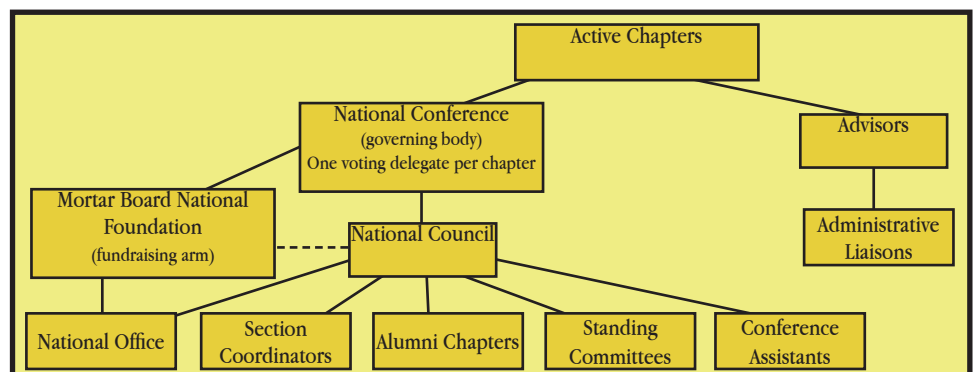
well as taking minutes at each meeting. The treasurer is in charge of collecting local membership dues (if local dues are required by the chapter), opening a checking account, if necessary, and submitting the chapter’s annual treasurer’s report and annual dues to the National Office. Some chapters also appoint a person to take charge of publicity for the group.

EMPLOYER IDENTIFICATION NUMBER (EIN)

Mortar Board, Inc. is a tax exempt organization under the IRS code 501 (c)(3). Each collegiate and alumni chapter is considered a subordinate of the parent organization for IRS purposes.

Your alumni chapter must apply for an employer identification number with the Internal Revenue Service. To apply for your chapter’s EIN, you will need to complete and submit an SS-4 Form to the IRS. The SS-4 is a simple one-page document that takes a few minutes to complete. It is available at your local library, any tax preparation service, or may be easily downloaded from the Web at: www.irs.gov/pub/irs-pdf/ss4.pdf. Please notify the National Office as soon as the new tax identification number is received so it can be added to the group tax report filed annually by the National Office.

ORGANIZATIONAL CHART FOR MORTAR BOARD



SAMPLE CONSTITUTION

MORTAR BOARD ALUMNI CHAPTER

Article I - Name

The name of this organization is _____ Mortar Board Alumni Chapter.
(city)

Article II - Purpose

Section 1. The purposes of this organization are to perpetuate the ideals of Mortar Board, to assist active chapters in their programs when possible, to bring together persons of similar interests, and to sustain among all its members enduring friendships.

Article III - Membership

Section 1. This chapter shall be composed of alumni of Mortar Board from any chapter.

Section 2. Five or more alumni of Mortar Board may associate themselves as an alumni club.

Section 3. Alumni of a local group, installed as a Mortar Board chapter after their year of membership, shall be entitled to membership in an alumni chapter provided they have been initiated as Mortar Board members at a chapter initiation or through the National Office. Their names must be listed as initiated and paid Mortar Board members on the national roll.

Article IV - Officers

Section 1. Each alumni chapter shall elect a president, vice-president, secretary and treasurer.

Section 2. Alumni chapter officers shall be elected by a majority of all members present at election, which shall be in the spring of each year. The officers elected shall take office immediately following their election.

Section 3. If a vacancy occurs among the officers by reason of resignation, disqualification, or for any other reason, a successor shall be elected by a majority of all members present at any regular meeting of the club. The officers so elected shall hold officer for the unexpired term.

Article V - Meetings

Section 1. _____ Alumni Chapter shall meet _____
_____.

Article VI. - Finance

Section 1. Each alumni chapter shall pay to Mortar Board, Inc., a fee of \$25 as prescribed in the national *Bylaws*.

Article VII - Amendments

Section 1. This Constitution may be amended by affirmative vote of three fourths of the alumni chapter members present at a regular meeting.



CONSTITUTION FOR MID-NEBRASKA MORTAR BOARD ALUMNI CHAPTER

MID-NEBRASKA MORTAR BOARD ALUMNI CHAPTER

Article I - Name

The name of this organization is Mid-Nebraska Mortar Board Alumni Chapter.

Article II - Purpose

Section 1. The purposes of Mid-Nebraska Mortar Board Alumni Chapter are to perpetuate the ideals of Mortar Board, to assist active chapters in their programs when possible, to bring together persons of similar interests, and to sustain among all its members enduring friendships.

Article III - Membership

Section 1. The Mid-Nebraska Mortar Board Alumni Chapter shall be composed of alumni of Mortar Board from any chapter.

Section 2. Five or more alumni of Mortar Board may associate themselves as an alumni club.

Section 3. Alumni of a local group, installed as a Mortar Board chapter after their year of membership, shall be entitled to membership into the Mid-Nebraska Mortar Board Alumni Chapter provided they have been initiated as Mortar Board members at a chapter initiation or through the National Office. Their names must be listed as initiated and paid Mortar Board members on the national roll.

Article IV - Officers

Section 1. The Mid-Nebraska Mortar Board Alumni Chapter shall elect a president, vice-president, secretary and treasurer.

Section 2. Officers of the Mid-Nebraska Mortar Board Alumni Chapter shall be elected by a majority of all members present at election, which shall be in the spring of each year. The officers elected shall take office immediately following their election.

Section 3. If a vacancy occurs among the officers by reason of resignation, disqualification, or for any other reason, a successor shall be elected by a majority of all members present at any regular meeting of the club. The officers so elected shall hold office for the unexpired term.

Article V - Meetings

Section 1. The Mid-Nebraska Mortar Board Alumni Chapter shall meet twice each year, once in the spring and once in the fall. Additional meetings or events shall be scheduled as needed.

Article VI. - Finance

Section 1. The Mid-Nebraska Mortar Board Alumni Chapter shall pay to Mortar Board, Inc., a fee of \$25 as prescribed in the national *Bylaws*.

Article VII - Amendments

Section 1. This Constitution may be amended by affirmative vote of three fourths of the alumni chapter members present at a regular meeting.



MORTAR BOARD'S PROUD HERITAGE - SINCE 1918

From its inception as the first national organization honoring senior college women to its present-day status, the evolution of Mortar Board mirrors an attempt to keep pace with an ever-changing society.

It was on the campus of the University of Chicago in the fall of 1915 when a member of Mortar Board from The Ohio State University met a member of Pi Sigma Chi from Swarthmore College. Both women wore similar pins in the shape of a mortarboard. Through discussion they realized each represented an honor society for women with similar election methods, operating procedures, ideals and traditions. The main difference in the honor societies was their names.

The founding meeting for the organization of the national honor society took place at Syracuse University on February 15, 1918. Representatives were from Cornell University, The University of Michigan, The Ohio State University, Swarthmore College and Syracuse University, who did not choose to join the national organization when it became Mortar Board after the founding meeting.

The founding meeting adopted the pin of The Ohio State University, a small black mortarboard. A motto was adopted, taken from the Greek words meaning service, scholarship, and leadership, to be represented by three Greek letters, Pi Sigma Alpha. The *Bylaws* were adopted from a tentative plan outlined by Swarthmore. Officially the society remained nameless until the second convention at The University of Michigan, but correspondence with prospective chapters following the February 1918 meeting referred to the new organization as Mortar Board, the name and spelling of the Ohio State honor society.

Significant events in the history of Mortar Board can be traced through activities at its national meetings:

1919 At the second convention at The University of Michigan on April 25, it was decided that the national officers should come from the ranks of alumni.

1923 At the national convention held in February at Swarthmore College, delegates voted to establish districts in Mortar Board to facilitate the growing size of the organization, composed of eighteen chapters.

1924 In the fall, the delegates of the fifth national convention at the University of Kentucky authorized the publication of the Mortar Board *Quarterly*.

1937 On February 27, Mortar Board was invited to become a member of the Association of College Honor Societies (ACHS). Mortar Board was the only organization composed entirely of women to be so recognized by ACHS at this time.

1941 The Katherine Wills Coleman Fellowship for graduate work was established at the convention in Buck Hill Falls, Pennsylvania. The fellowship carried an award of \$500 and was given to an active member of Mortar Board who could qualify as a candidate for a degree beyond the bachelor's in an accepted university.

1949 The fourteenth national convention, held at Breezy Point, Minnesota, with 81 chapters present, established the Coral Vanstrum Stevens Gift Membership, which may be awarded annually by each chapter to a person needing financial assistance in order to accept membership.

1955 The Mortar Board Foundation Fund was established by action of the delegates in response to inquiries for a means by which contributions might be made to advance the purposes of the organization.

1970 The 21st national conference (the first time for the use of the term "conference") held in June 1970 at the University of Nebraska established a National Office at The Ohio State University in Columbus, Ohio. The delegates voted to invite student advisors to meet annually with the National Council and replaced the *Quarterly* with a newsletter, the *Mortar Board Forum*.

1973 Delegates to the national conference at The Ohio State University affirmed membership for women only. The first Mortar Board National Citation, instituted to honor women who made outstanding contributions to the status of women within the society's ideals, was presented to Congresswoman Martha W. Griffiths of Michigan.

1975 A special conference was convened that October in Kansas City, Missouri, to consider the ramifications of Title IX regulations, which prohibited sex discrimination within organizations on campuses that are recipients of federal funds. Membership was opened to male students and the purpose of the organization was amended to include "to promote and advance the status of women."

1976 The conference held at Colorado State University was Mortar Board's first to include men as voting delegates. This conference addressed the question of the society's purpose. Delegates affirmed the purpose "to emphasize the advancement of the status of women" as well as "to promote equal opportunities among all people."

1982 At the national conference in Nashville, Tennessee, the impact of diminished government support for higher education was a major concern of the delegates. They responded by directing that six percent of the membership dues be contributed to the Mortar Board Fellowship program.

1985 At the 1985 conference in Columbus, Ohio, Mortar Board delegates passed a resolution to initiate a national project to be selected by each national conference, with organ donor awareness as the very first national project. Delegates also voted to hold national conferences biennially, at which time national projects would also be determined.

1987 In Indianapolis at the conference, men were elected to the National Council for the first time. Additionally, delegates voted to have an elected student representative-at-large added to the National Council. The national project also became part of the *Bylaws* at this time.



(cont. on next page)



(cont. from previous page)

1993 The 75th anniversary of Mortar Board's founding was celebrated in July at the thirtieth national conference held in Columbus, Ohio. Eight former national presidents attended a banquet which highlighted a year marked with chapter celebrations and great success toward ending the Mortar Board National Foundation fund.

1995 At the national conference held in Scottsdale, Arizona, delegates voted to hold national conferences annually.

1996 A second student representative was added to the National Council at the national conference held this year in Columbus, Ohio.

1997 Conference delegates passed the *Strategic Plan*. Implementation of the *Strategic Plan* commenced in 1998 when the structure of the Mortar Board National Council was changed to a board of directors model instead of specific tasks being assigned to each position. At this same time, permanent full-time positions were added to the National Office.

1999 Mortar Board began a significant alumni outreach movement. Alumni were contacted through postcards and other communications pieces and a National Alumni Sustaining Membership program was established to serve all alumni.

2000 The Mortar Board National Foundation made great strides in the year 2000, nearing \$1 million in funds to support the aims of Mortar Board through fellowships, chapter project grants and leadership development opportunities. The National Foundation dedicated \$500,000 to the fellowship program.

2001 The National Foundation increased the fellowship award amount to \$2,000 per fellowship.

2002 Delegates voted to make "Reading is Leading" the permanent national project for the organization.



2005 The first male national president of Mortar Board began his term at the national conference. Delegates voted to change the allocation of their membership dues to the National Foundation by dividing the contribution among the endowed fellowship fund (two percent) and the leadership initiatives fund (four percent).

2006 The Mortar Board National Foundation's first male chair was appointed.

2007 The first male executive director of Mortar Board assumed his position.

TRADITIONS: MORTAR BOARD SONGS & POEM

The Torch (poem)

The God of Great Endeavor gave me a torch to bear.
I lifted it high above me in the dark and murky air,
And straightway, with loud hosannas, the crowd proclaimed its light
And followed me as I carried my torch through the starless night.
Till drunk with the people's praises, and mad with vanity,
I forgot 'twas the torch that they followed,
And fancied they followed me.

Then slowly my arm grew weary upholding the shining load,
And my tired feet went stumbling over the dusty road,
And I fell—with the torch beneath me. In a moment the light was out,
When lo from the throng a stripling sprang forth with a mighty shout,
Caught up the torch as it smoldered, and lifted it high again,
Till, fanned by the winds of heaven, it fired the souls of men.

As I lay in the darkness, the feet of the trampling crowd
Passed over and far beyond me, its paeans proclaiming aloud,
And I learned in the deepening twilight, the glorious verity,
'Tis the torch that the people follow,
Whoever the bearer may be.

-Anonymous

Thy Ideals (song)

Thy ideals, Pi Sigma Alpha,
We are ever striving toward
As we seek to live thy motto
In the bonds of Mortar Board.
And to you whom we have chosen
In the years both far and near
Comes the privilege of Service
To our Alma Mater Dear.

The Mortar Board Ode (song)

We, Mortar Boards, receive you with welcome hearts and hands
To represent the noble aims for which our college stands;
And this our aim, what ere befall, respond to Alma Mater's call,
Be honest, loyal, true, and strong as future Mortar Boards.

Sheet music and recordings of the songs are available from the National Office. For a copy, call 1-800-989-6266 or e-mail mortar-board@osu.edu.



THE MORTAR BOARD NATIONAL FOUNDATION

ADVANCING SCHOLARSHIP, LEADERSHIP AND SERVICE

The Mortar Board National Foundation was founded in 1955 to facilitate private gifts to further the purpose and ideals of Mortar Board. With the contributions of Mortar Board members, friends and others who hold steadfast the ideals of scholarship, leadership and service, Mortar Board is able to galvanize the talents of today's college students for the betterment of their communities and society. Through continued generosity Mortar Board will be able to extend that service to tomorrow's students into the 21st century and beyond.

THE MORTAR BOARD FELLOWSHIP PROGRAM

Since 1941, more than \$500,000 in fellowships have been awarded to Mortar Board members to assist them in pursuing graduate study. Fellowship winners can be found in almost every profession and throughout the world demonstrating their commitment to scholarship, leadership and service. Among those who credit Mortar Board with helping them achieve their personal and professional success are:

- a pediatric neurosurgeon and assistant clinical professor at a prominent west coast medical school
- a prize-winning novelist and short story writer
- a state superior court judge and former state attorney general
- a fellow in the American Psychiatric Association
- a program for an agency fighting child abuse
- a president of a San Francisco real estate development, finance and investment banking firm
- a systems engineering test director for the Naval Air Test Center
- a president of a state government lawyer's bar association and advisor to the state's Medicaid program
- a choreographer and dance historian in London

As college costs continue to rise with the increased importance of post-baccalaureate education, Mortar Board fellowships provide a valuable opportunity for bright, accomplished undergraduates to pursue master's and doctoral-level degrees. Last year, \$28,000 in fellowships was awarded to 12 deserving recipients continuing their education in numerous fields.

Gifts of all sizes may be made to support the Mortar Board Fellowship Program. Or, for a minimum commitment of \$40,000, payable over time, a name-endowed fellowship may be established in honor or memory of a special individual or loved one. Such a contribution provides a source of support and a fitting tribute in perpetuity.

CHAPTER AND NATIONAL PROJECT GRANTS

The hallmarks of Mortar Board's active campus and community service are its national and local chapter projects. Student delegates select a national project, then implement it at the local level. Previous national projects have included organ donor awareness, literacy, AIDS education, substantive women's issues, children's issues and learning without boundaries. Reading is Leading, a pro-literacy effort, was made the permanent national project in 2002.

Collegiate and alumni chapters have conducted organ donor drives, sponsored leadership conferences, collected food and clothing for women's shelters, tutored children, held educational seminars, implemented after-school child care programs, and have actively promoted these issues of concern in hundreds of ways, limited only by their own collective imaginations.

Gifts earmarked for Chapter Project Grants help to underwrite the costs of these activities on the local level. Chapter Project Grants are awarded to chapters whose projects demonstrate superior planning and potential impact. Nationally, gift funds may be used to develop project support and issue-related educational materials to assist chapter members in their pursuit of service.

LEADERSHIP DEVELOPMENT

At the annual National Conference, chapter members learn how to strengthen their own leadership skills and how to develop others to be the best that they can be. They attend workshops, listen to nationally-known speakers and gain valuable experience to help them motivate other volunteers in Mortar Board chapters and their own communities.

Conference costs are kept at a minimum for the students in attendance, with only a modest registration fee charged to the collegiate chapters. Conference preparation and organization is done by the National Office staff, along with other members of the national leadership. Contributions help to bring in renowned speakers and workshop presenters, provide materials for the participants and otherwise underwrite the operational costs of the conference. Additionally, gifts help to provide other programming and educational resources provided to the alumni and collegiate chapters throughout the year.



EXAMPLES OF ALUMNI CHAPTER PROGRAMS

Alumni chapter programs reflect each group's unique purpose. Programs vary, for example, from the Monmouth, Illinois alumni chapter's program to provide scholarships for students at Monmouth College, to the Iowa City alumni chapter whose motto is: "We meet to eat and rest our feet." Most alumni groups meet for both social and educational purposes. Many raise money for scholarships for students at their local college(s).

MEETINGS AND PROGRAMS - FOR FUN, FELLOWSHIP, EDUCATION AND CONNECTION!

Whatever meeting schedule appeals to your particular chapter members, try to make it worth your time and effort to attend. You may announce your gatherings in local community newspapers, city papers, on the radio and TV, by postcard or letter, phone calls or e-mail. The important point is to utilize the media that best fits the lifestyles of your membership. The content of the meetings may be planned by your own members to share their careers, volunteer interests, hobbies or tours of historic sites or brand new buildings - all have proven to be favorites of our alumni groups over the years. If you are lucky enough to be near a collegiate chapter, a joint meeting will be of great value to both groups, and remember food is a wonderful reason to meet - sharing ideas over a potluck dinner, initiation brunch or pizza party bridges the generation gap perfectly. You could hold a meeting via a Web site, conference call or even video conference - but perhaps the most satisfying is meeting people face-to-face and learning about the wonderful diversity which is Mortar Board.



EXAMPLES OF ALUMNI PROGRAMMING

- **Tours** of interesting locations or activities in the area such as special art exhibits, campus visits, community locations
- **Panel presentations** such as collegiate chapter members, alumni in interesting careers, international students
- **Speakers** about relevant national or community issues; faculty from nearby colleges speaking about their areas of specialization; speakers from within the chapter membership itself (e.g., philanthropic involvement, interesting or unusual careers, hobbies, travel)
- **Receptions** or other meals for collegiate chapter members (e.g., pizza parties, potluck dinners, dessert contests); sponsor reception after initiation of new members and their parents; help students with faculty recognition receptions or other events
- **Establish scholarship funds** at local colleges or donate to graduate fellowships through the National Mortar Board Foundation
- Through financial or clerical assistance, help collegiate chapters assemble a **current list of Mortar Board alumni** from the local college, if such a list does not exist
- Sponsor with an active collegiate chapter **workshops** on leadership or co-sponsor **service projects**
- Help with the annual **National Conference** if it is held in your area
- Participate as an alumni member in the **initiation ceremony** upon request of an active collegiate chapter



NATIONAL CHAPTER ROSTER

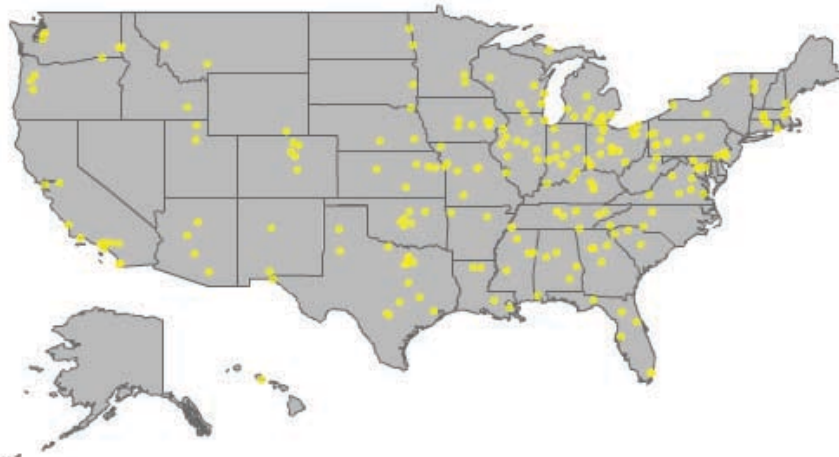
Year	School	Location	Section	Year	School	Location	Section
1989	Adrian College	Adrian, MI	12	1972	Georgia State University	Atlanta, GA	Inactive 2000
1931	Agnes Scott College	Decatur, GA	6	1939	Georgia, The University of	Athens, GA	6
1964	Akron, The University of	Akron, OH	11	1937	Grinnell College	Grinnell, IA	16
1929	Alabama, The University of	University, AL	6	1972	Grove City College	Grove City, PA	2
1941	Albion College	Albion, MI	12	1976	Hanover College	Hanover, IN	13
1969	American University, The	Washington, DC	2	1965	Hawaii, University of at Manoa	Honolulu, HI	25
1963	Arizona State University	Tempe, AZ	21	1948	Hood College	Frederick, MD	3
1926	Arizona, University of	Tucson, AZ	21	1961	Hope College	Holland, MI	12
1940	Arkansas, University of	Fayetteville, AR	18	1970	Houston, University of	Houston, TX	Inactive 2000
1955	Auburn University	Auburn, AL	6	1972	Idaho State University	Pocatello, ID	23
1965	Augustana College	Rock Island, IL	14	1923	Idaho, University of	Moscow, ID	23
1971	Ball State University	Muncie, IN	13	1976	Illinois State University	Normal, IL	14
1971	Baylor University	Waco, TX	20	1918	Illinois, University of	Champaign, IL	14
1951	Beloit College	Beloit, WI	15	1982	Indiana State University	Terre Haute, IN	13
1973	Berea College	Berea, KY	9	1921	Indiana University	Bloomington, IN	13
1935	Birmingham-Southern College	Birmingham, AL	6	1997	Indiana University of Pennsylvania	Indiana, PA	2
1974	Boston University	Boston, MA	Inactive 1995	1925	Iowa State University	Ames, IA	16
1969	Bowling Green State University	Bowling Green, OH	11	1926	Iowa, The University of	Iowa City, IA	16
1967	Bradley University	Peoria, IL	14	1977	James Madison University	Harrisonburg, VA	3
1941	Bucknell University	Lewisburg, PA	2	1928	Kansas State University*	Manhattan, KS	17
1956	Butler University	Indianapolis, IN	13	1924	Kansas, The University of	Lawrence, KS	17
1986	California Polytechnic State University	San Luis Obispo	25	1972	Kent State University	Kent, OH	11
1972	California State University	Long Beach, CA	25	1920	Kentucky, University of	Lexington, KY	9
1925	California, University of	Berkeley, CA	25	1920	Knox College	Galesburg, IL	14
1939	California, University of	Los Angeles, CA	25	1975	Lake Erie College	Painesville, OH	11
1965	California, University of	Santa Barbara, CA	25	1998	Lakeland College	Sheboygan, WI	15
1951	Carleton College	Northfield, MN	15	1922	Lawrence University	Appleton, WI	15
1923	Carnegie Mellon University	Pittsburgh, PA	2	1993	Longwood University	Farmville, VA	3
1974	Carson-Newman College	Jefferson City, TN	8	1977	Louisiana, University of	Monroe, LA	7
1952	Case Western Reserve University	Cleveland, OH	11	1934	Louisiana State University	Baton Rouge, LA	7
1973	Central Michigan University	Mount Pleasant, MI	12	1974	Louisiana Tech University	Ruston, LA	7
1984	Central Missouri State University	Warrensburg, MO	17	1949	Louisville, University of	Louisville, KY	9
1978	Central Oklahoma, University of	Edmond, OK	18	2001	Lyon College	Batesville, AR	18
1957	Chatham College	Pittsburgh, PA	2	1968	MacMurray College	Jacksonville, IL	14
1932	Cincinnati, University of	Cincinnati, OH	10	1959	Mary Washington, University of	Fredericksburg, VA	3
1977	Clemson University	Clemson, SC	4	1934	Maryland, University of	College Park, MD	3
1985	Coe College	Cedar Rapids, IA	16	1955	Massachusetts, University of	Amherst, MA	1
2002	Colorado College, The	Colorado Springs	22	1973	Memphis, University of	Memphis, TN	8
1961	Colorado State University	Fort Collins, CO	22	1922	Miami University	Oxford, OH	10
1924	Colorado, University of	Boulder, CO	22	1965	Miami, The University of	Coral Gables, FL	5
1949	Connecticut, The University of	Storrs, CT	1	1934	Michigan State University	East Lansing, MI	12
1967	Converse College	Spartanburg, SC	4	1918	Michigan, The University of	Ann Arbor, MI	12
1943	Cornell College	Mt. Vernon, IA	16	2001	Middle Tennessee State University	Murfreesboro, TN	8
1918	Cornell University	Ithaca, NY	1	1928	Middlebury College	Middlebury, VT	Inactive 1985
1960	Delaware, University of	Newark, DE	2	1981	Midwestern State University	Wichita Falls, TX	19
1936	Denison University	Granville, OH	10	1919	Minnesota, University of	Minneapolis, MN	15
1937	Denver, The University of	Denver, CO	22	1978	Mississippi College	Clinton, MS	7
1919	DePauw University	Greencastle, IN	13	1986	Mississippi State University	Mississippi State, MS	7
1954	Drake University	Des Moines, IA	16	1942	Mississippi University for Women	Columbus, MS	7
1966	Drury University	Springfield, MO	18	1942	Mississippi, University of	Oxford, MS	7
1976	Duquesne University	Pittsburgh, PA	2	1918	Missouri, University of	Columbia, MO	17
1992	Eastern Illinois University	Charleston, IL	14	1942	Missouri, University of	Kansas City, MO	17
1983	Eastern Kentucky University	Richmond, KY	9	1972	Monmouth College	Monmouth, IL	14
1972	Eastern Michigan University	Ypsilanti, MI	12	1927	Montana State University	Bozeman, MT	23
2003	Embry-Riddle Aeronautical University	Prescott, AZ	23	1927	Montana, University of	Missoula, MT	23
1969	Emory University	Atlanta, GA	6	1988	Nebraska, The University of	Kearney, NE	16
2003	Endicott College	Beverly, MA	1	1921	Nebraska, The University of	Lincoln, NE	16
1975	Evansville, University of	Evansville, IN	13	1938	New Hampshire, The University of	Durham, NH	1
1975	Fisk University	Nashville, TN	8	1967	New Mexico State University	Las Cruces, NM	21
1996	Florida International University	Miami, FL	5	1936	New Mexico, The University of	Albuquerque, NM	21
1931	Florida State University	Tallahassee, FL	5	1964	North Dakota State University	Fargo, ND	16
1960	Florida, University of	Gainesville, FL	5	1932	North Dakota, University of	Grand Forks, ND	16
1971	Fort Hays State University	Hays, KS	17	1968	North Texas, University of	Denton, TX	19
1938	George Washington University	Washington, DC	Inactive 1979	1971	Northern Arizona University	Flagstaff, AZ	21



CURRENT MORTAR BOARD CHAPTER ROSTER

Year	School	Location	Section	Year	School	Location	Section
1972	Northern Colorado, The University of	Greeley, CO	22	1918	Swarthmore College	Swarthmore, PA	Inactive 1965
1971	Northern Illinois University	DeKalb, IL	14	1975	Tennessee Technological University	Cookeville, TN	8
1979	Northern Michigan University	Marquette, MI	12	1953	Tennessee, University of	Chattanooga, TN	8
1995	Northwest Missouri State University	Maryville, MO	17	1937	Tennessee, University of	Knoxville, TN	8
1922	Northwestern University	Evanston, IL	14	1979	Texas A & M University	College State, TX	20
1947	Occidental College	Los Angeles, CA	25	1970	Texas Christian University	Fort Worth, TX	19
1975	Ohio Northern University	Ada, OH	11	1957	Texas Tech University	Lubbock, TX	19
1918	Ohio State University, The	Columbus, OH	10	1990	Texas Wesleyan University	Fort Worth, TX	19
1938	Ohio University	Athens, OH	10	1972	Texas Woman's University	Denton, TX	19
1929	Ohio Wesleyan University	Delaware, OH	10	1923	Texas, The University of	Austin, TX	20
1968	Oklahoma Baptist University	Shawnee, OK	18	1972	Texas, The University of	El Paso, TX	21
1940	Oklahoma State University	Stillwater, OK	18	2000	Texas, University of	San Antonio, TX	21
1925	Oklahoma, The University of	Norman, OK	18	1983	Toledo, The University of	Toledo, OH	11
1933	Oregon State University	Corvallis, OR	24	1973	Trinity University	San Antonio, TX	20
1923	Oregon, University of	Eugene, OR	24	1979	Troy University	Troy, AL	6
1988	Otterbein College	Westerville, OH	10	1958	Tulane University	New Orleans, LA	7
1967	Pacific, University of The	Stockton, CA	25	1950	Tulsa, The University of	Tulsa, OK	18
1935	Pennsylvania State University, The	State College, PA	2	1970	Utah State University	Logan, UT	22
1921	Pennsylvania, The University of	Philadelphia, PA	2	1933	Utah, University of	Salt Lake City, UT	22
1923	Pittsburgh, University of	Pittsburgh, PA	2	1969	Valparaiso University	Valparaiso, IN	13
1930	Pomona College	Claremont, CA	25	1940	Vanderbilt University	Nashville, TN	8
1959	Puget Sound, University of	Tacoma, WA	24	1924	Vermont, The University of	Burlington, VT	1
1926	Purdue University*	West Lafayette, IN	13	1977	Virginia Polytechnic Institute & State University	Blacksburg, VA	3
1987	Queens University of Charlotte	Charlotte, NC	4	1969	Wake Forest University	Winston-Salem, NC	4
1955	Redlands, University of	Redlands, CA	25	2006	Washburn University	Topeka, KS	17
1967	Rhode Island, University of	Kingston, RI	1	1923	Washington State University	Pullman, WA	23
1964	Rhodes College	Memphis, TN	8	1922	Washington University	St. Louis, MO	17
1930	Richmond, University of	Richmond, VA	3	1925	Washington, University of	Seattle, WA	24
2001	Rowan University	Glassboro, NJ	2	1952	Wayne State University	Detroit, MI	Inactive 1997
1984	Salem College	Winston-Salem, NC	4	1972	Wesleyan College	Macon, GA	6
1965	San Diego State University*	San Diego, CA	25	1985	West Texas A & M University	Canyon, TX	19
2000	San Diego, University of*	San Diego, CA	25	1924	West Virginia University	Morgantown, WV	2
1994	Seattle Pacific University	Seattle, WA	24	1976	West Virginia Wesleyan College	Buckhannon, WV	2
1979	South Alabama, University of	Mobile, AL	6	1983	Western Carolina University	Cullowhee, NC	4
1967	South Carolina, University of	Columbia, SC	4	1976	Western Illinois University	Macomb, IL	14
1972	South Dakota State University	Brookings, SD	16	1963	Western Michigan University	Kalamazoo, MI	12
1928	South Dakota, The University of	Vermillion, SD	16	2000	Western New England College	Springfield, MA	1
1972	South Florida, University of	Tampa, FL	5	1955	Westminster College	New Wilmington, PA	2
1929	Southern California, University of	Los Angeles, CA	25	1926	Whitman College	Walla Walla, WA	Inactive 1987
1932	Southern Methodist University	Dallas, TX	19	1954	Wichita State University	Wichita, KS	17
1980	Southern Nazarene University	Bethany, OK	18	1958	Willamette University	Salem, OR	24
1987	Spelman College	Atlanta, GA	6	1928	William & Mary, College of	Williamsburg, VA	3
1955	St. Lawrence University	Canton, NY	Inactive 1976	1978	William Jewell College	Liberty, MO	17
1993	State University of New York	Buffalo, NY	1	1976	Wisconsin, University of	Eau Claire, WI	15
1986	Stephens College	Columbia, MO	17	1920	Wisconsin, University of	Madison, WI	15
1958	Stetson University	DeLand, FL	5	1975	Wisconsin, University of	Milwaukee, WI	15
				1967	Wittenberg University	Springfield, OH	10
				1933	Wyoming, University of	Laramie, WY	22
				1994	Xavier University	Cincinnati, OH	10

MAP OF COLLEGIATE CHAPTERS



ALUMNI CHAPTERS 2006-2007

Albuquerque NM:

Margaret Hopcraft Dike
1611 Bayita Lane NW
Albuquerque, NM 87107-3320
505-344-2590

Atlanta GA:

Vivian Conklin
6327 Chesla Drive
Gainesville, GA 30506
770-534-0557

Auburn AL:

Elizabeth G. Williams
546 Moores Mill Road
Auburn, AL 36830

Berkeley CA:

Jane Whitesides
2630 Saklan Indian Dr. #1
Walnut Creek, CA 94595
925-939-7459

Birmingham AL (Greater Area):

Mary-Gwin Stainton Morris
1106 Saulter Rd.
Birmingham, AL 35209
205-871-9734

California Central Coast:

Jennifer Sawyer
1762 DeVaul Ranch Dr.
San Luis Obispo, CA 93405
805-781-8435

Carson-Newman:

Cindy Seaver
11619 Crystal Brook Lane
Knoxville, TN 37934
865-384-2578
bright_cindy@hotmail.com

Columbia MO:

Mary Ann Gates
4251 N. Glendale Drive
Columbia, MO 65202

Columbus OH:

Valerie Kuhnheim
5380 Reston Park Drive
Columbus, OH 43235
614-451-7649

Cleveland OH:

Dave Urbanek
5725 Hartshire Dr.
Willoughby, Ohio 44094
440-953-8844

Dallas TX:

Linda Steinberg
6417 Dykes Way
Dallas, TX 75230
972-490-8088

Denver CO (Metro):

Charlotte Ward
548 Franklin Ave.
Denver, CO 80218-3624
303-322-9623

Greater Lafayette IN:

Suzann Shackleton
3301 E. 600 N.
Pine Village, IN 47975
765-385-2478

Indianapolis IN:

Marilyn Pecsok, Treas.
4716 E. 75th St.
Indianapolis, IN 46250
317-849-0071

Iowa City IA:

Ruth Skelley
1804 Windsor Court
Iowa City, IA 52245
319-351-4236

Kent OH:

Marsha Eschliman
2799 Outlook Dr.
Silver Lake, OH 44224
330-929-3343

Lawrence KS:

Janet Moody
2100 Carolina
Lawrence, KS 66046
785-841-4361

Lubbock TX:

Betty Bell
P.O. Box 114
Wolfforth, TX 79382
806-866-4486



ALUMNI CHAPTERS 2005-2006 (CONT.)

Miami FL:

Bonnie Rigg
18 E Di Lido Dr
Miami Beach, FL 33139-1226
305-531-5192
bonnie@revii.com

Mid-Nebraska:

Carla Wick
27158 Avenue I, Apt 39
Kearney, NE 66847
308-233-9053

Milwaukee WI:

Elizabeth Ruthmansdorfer
2716 E. Honeysuckle Dr.
Oak Creek, WI 53154
414-764-3842

Monmouth IL:

Linda Ellison
721 North Third St.
Monmouth, IL 61462
309-734-3256

Muncie IN:

Joyce Carmichael
2700 Timber Lane
Munice, IN 47304
765-289-1521
joyce4138@msn.com

Northern Illinois Regional Chapter:

Denise Rode
Orientation Office
Northern Illinois University
Holmes Student Center Basement
DeKalb, Illinois 60115-2898
815-753-6781

Pittsburgh, PA:

Meghan Hogue
609 S. Braddock Ave, Apt. 2
Pittsburgh, PA 15221
412-371-8419

St. Louis MO:

Barbara Bollmann
10 Dover Lane
Villa Ridge, MO 63089
314-799-3323

San Diego CA:

Kim Naiman
8549 Verlane Drive
San Diego, CA 92119

Seattle WA (Tolo Association):

Margot Smith
5819 111th Ave SE
Bellevue, WA 98006
425-747-6197
go2mnsmith@aol.com

State College PA:

Brenda Walsh
1966 Park Forest Ave.
State College, PA 16803
814-238-3167

Stillwater OK:

Kent Sampson
060 Student Union
Oklahoma State University
Stillwater, OK 74078
405-744-5488

Tampa Bay, FL:

Shellii Martin
5018 E. 111th Ave.
Tampa, FL 33617
813-989-0399

Tuscaloosa AL:

Patti Remmert
1123 Kings Mountain Rd.
Tuscaloosa, AL 35406-1693

Wichita, KS:

Mary Herrin
2626 N. Dublin Cir.
Wichita, KS 67226
316-683-1984



ALUMNI PARTICIPATION IN THE INITIATION OF NEW COLLEGIATE MEMBERS

BEYOND GRADUATION

Alumni may be asked to participate in the initiation of new members by an active chapter. At the end of the ceremony current members are reminded of their future role as alumni members. Be sure to include the alumni portion of the chapter initiation ceremony. It reads as follows:

Chapter President: I now present to you these newly initiated members of _____ (name of local chapter) of Mortar Board.

Alumni Chairperson: Will the retiring members of the chapter please rise? Although active collegiate membership in Mortar Board lasts only one year, the commitment to excellence in scholarship, leadership and service is one of lifelong duration. Do you pledge to continue your commitment to the pursuit of excellence in scholarship, leadership and service?

All Retiring Members: I do.

As indicated earlier, if there is a local alumni chapter in the area, its members often volunteer to assist the active chapter with the reception or dinner for the new initiates and their parents by furnishing the food or whatever assistance the active chapter requests.



NATIONAL OFFICE SERVICES

The National Office is located on the campus of The Ohio State University in Columbus, Ohio. It is the source of records and information related to chapter operation, national conferences, alumni, the Mortar Board Foundation, and the National Archives of Mortar Board.

Specific services include:

- Web site: www.mortarboard.org
- Mailing labels or printouts of area alumni
- Expansion information for both new chapters and new alumni chapters
- Program ideas from previous active and alumni chapters
- Past records of chapter membership
- Officer and Advisor Handbook
- Referrals to other chapters
- Mortar Board brochures
- All membership materials: pins, certificates, and membership booklets
- Mortar Board merchandise
- Fellowship Applications

CONTACT THE MORTAR BOARD NATIONAL OFFICE

1200 Chambers Road, Suite 201
Columbus, OH 43212
Phone: 800-989-6266
Fax: 614-488-4095
e-mail: mortar-board@osu.edu
Web site: www.mortarboard.org

