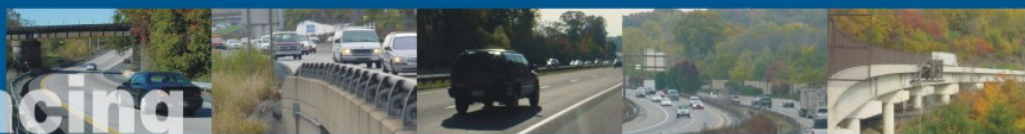


# I-476 Improvement Project

## I-95 to I-76

# Resurfacing



The Pennsylvania Department of Transportation (PennDOT) is beginning the second phase of its two-phase project to repair and resurface 16 miles of Interstate 476 (Blue Route) between Interstate 95 and Interstate 76 in Delaware and Montgomery counties, respectively.

PennDOT is resurfacing this portion of I-476 to enhance travel and safety, extend the life of the highway, and improve ride quality.

In mid-March 2006, PennDOT will start construction to upgrade the 7.8-mile section of I-476 between the Lawrence Road overpass (just south of the Route 3/West Chester Pike interchange) and I-76. Crews will mill and repave I-476 and ramps at the interchanges with Route 3 and Route 30. Repairs will also be made to the ramps at the I-476/I-76 interchange. In addition, PennDOT will repair 28 bridges; install new guide rail; install Intelligent Transportation System conduit; replace damaged signs; and clean drainage pipes.

In conjunction with the I-476 improvements, PennDOT will repair deteriorated sections of concrete pavement and repave a half-mile of I-76 in the area of the I-476 interchange.

Phase one construction on I-476 occurred in 2005 when PennDOT resurfaced I-476 between I-95 and the Lawrence Road overpass, and repaired and resurfaced I-95 in the area of the I-476 interchange.

In addition to the two resurfacing projects, PennDOT will improve I-476 in its entirety by reconstructing the six-lane section between I-76 and the Pennsylvania Turnpike's Mid-County interchange in Montgomery County. This reconstruction project is currently under design, with construction expected to start in two years.

PennDOT's I-476 corridor stretches 21.5 miles from I-95 to the Pennsylvania Turnpike (I-276).

## Construction Schedule

In 2006, construction will begin in mid-March and finish in November. This project, which includes the resurfacing of I-76 at the I-476 interchange, will result in lane closures on both interstates. Motorists are advised to allow additional time to travel on I-476 and I-76 during construction.

To minimize traffic impacts resulting from roadwork, construction on I-476 and I-76 will take place primarily on weeknights from 9 p.m. to 5 a.m., and on weekends. There will be a round-the-clock lane closure on northbound and southbound I-476 just south of Route 30 for three weeks starting in mid-March. Weekend construction on I-476 will result in lane closures from 9 p.m. Fridays to 5 a.m. Mondays. Weekend lane closures on I-76 will occur Saturdays from 12:01 a.m. to 8 a.m. and then at different times depending on the location of the work. On eastbound I-76, additional weekend lane closures can occur from 9 p.m. Saturdays to 5 a.m. Mondays; on westbound I-76, further weekend restrictions can take place from 9 p.m. Saturdays to 5 p.m. Sundays and from 9 p.m. Sundays to 5 a.m. Monday.

On one weekend in the spring, the eastbound and westbound I-76 ramps leading to northbound I-476 will be closed and detoured from 9 p.m. Friday to 5 a.m. Monday for pavement replacement in the area where the ramps converge. During the weekend ramp closures, the following detours will be in effect:

Ramp	Detour
I-76 East to I-476 North	I-76 East to Gulph Mill Exit to Gulph Mills Road to Old Gulph Road to Matsonford Road to ramp to I-476 North
I-76 West to I-476 North	I-76 West to I-476 South to Route 30 East to ramp to I-476 North

No travel restrictions will be in effect on I-476 and I-76 during the Memorial Day, Independence Day and Labor Day holidays. The holiday no-work restriction covers three days before the holiday, the holiday and the day following the holiday.



**I-476 IMPROVEMENT PROJECT**

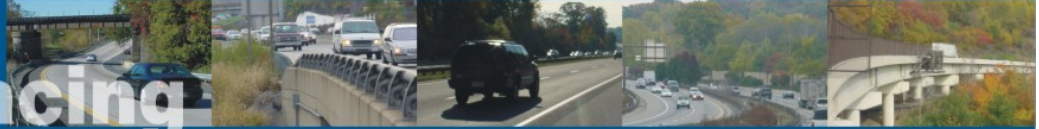
[www.476blueroute.com](http://www.476blueroute.com)

[www.476blueroute.com](http://www.476blueroute.com)

# I-476 Improvement Project

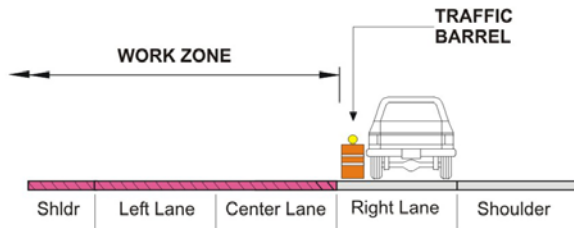
## I-95 to I-76

# Resurfacing



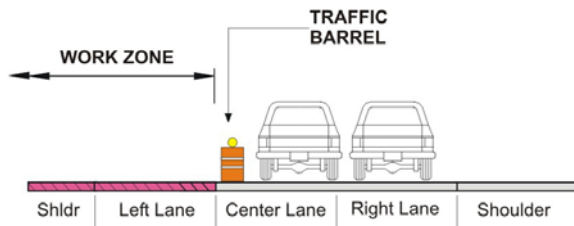
### Typical 3 Lanes to 1 Lane Restriction

I-476 (PA 3/West Chester Pike to I-76/Schuylkill Expressway)



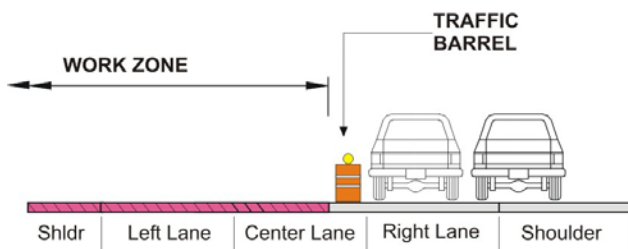
### Typical 3 Lanes to 2 Lanes Restriction

I-476 (PA 3/West Chester Pike to I-76/Schuylkill Expressway)



### Typical 3 Lanes to 2 Lanes Restriction

I-476 (Just south of Route 30)



## Project Schedule

YEAR	2006				2007			
SEASON								
Phase 2 Construction								



I-476 IMPROVEMENT PROJECT

[www.476blueroute.com](http://www.476blueroute.com)

For More Project  
Information Visit

[www.476blueroute.com](http://www.476blueroute.com)



[www.476blueroute.com](http://www.476blueroute.com)