

19 March 2007

Vol. 16, No. 9

## Principal dates 2007

### Semester dates

Semester 1: 26 February – 1 June  
Semester 2: 23 July – 26 October

### Public holidays

The University is closed on:

**Friday 6 April to Tuesday 10 April inclusive:** Easter  
**Wednesday 25 April:** ANZAC Day  
Monday 11 June: Queen's Birthday

The University remains open on Labour Day (12 March), Melbourne Cup Day (6 November) and the former Show Day.

### International Education Week 2007

This week is the State Government's International Education Week. See [www.studymelbourne.vic.gov.au/event.htm](http://www.studymelbourne.vic.gov.au/event.htm)

### Contributions from all areas of the University are welcome.

Copy deadline: 5.00 pm, Wednesday of the week prior to publication. All material should be sent via email to [uninews@latrobe.edu.au](mailto:uninews@latrobe.edu.au) or faxed to 9479 1449.

Advertisements: Staff and students are allowed two line ads free of charge, per calendar year, before charging starts at \$10.50 per column centimetre (maximum of 40 words for all line ads).

Paid for advertisements will be accepted on the basis that the advertiser indemnifies the University against any action arising from the contents of the ads. The University is not liable for any loss or damage caused by any mistake or otherwise when preparing the advertisement.

University News is published weekly by La Trobe University.

Typeset and printed by Campus Graphics.

Editor: Jan Jackson, tel. 9479 2908

Advertisements: Gwen Tran, Carmela Siciliano  
Campus Graphics, tel. 9479 5652

Website: [www.latrobe.edu.au/uninews](http://www.latrobe.edu.au/uninews)

## National Harmony Day

Wednesday 21 March is National Harmony Day, falling on the United Nations 'International Day for the Elimination of Racial Discrimination'.

The students and staff of the Ngarn-gi Bagora Indigenous Centre, in collaboration with the Indigenous Office of the SRC, are proud to present Indigenous band, The Grenadines performing live in the Agora from 1.00pm.

There is also a bush tucker barbecue outside the Indigenous Centre from 11.45am so come along and support this important event. Let's acknowledge and promote cultural diversity at La Trobe University!

Contact Ngarn-gi Bagora Indigenous Centre on Bundoora extn 3817 or [n.green@latrobe.edu.au](mailto:n.green@latrobe.edu.au) for further information.

## RGSO grants news

Congratulations to Ms Juliana Valencia, who has been awarded a supplementary scholarship from the Sustainable Tourism Co-operative Research Centre.

Congratulations also to Professor Sandy Gifford, Director, Refugee Health Research Centre, who has been awarded a grant from the Victorian Department of Human Services.

Upcoming lunchtime seminars include:

- Intellectual property, freedom to publish and rights to use research data in externally funded projects, Monday 26 March, 1.00 – 2.00pm, HUED Room 103 (Bundoora), presented by Dr Peter Janssen, Commercialisation Manager, Innovation & Knowledge Transfer Division
- Networking – preparing for your next conference and how to enhance your career prospects at the same time, Wednesday 28 March, 1.00 – 2.00pm, Glenn College, Stan Oates Room (Bundoora), presented by Ms Sue Bell, Director, Innovation and Knowledge Transfer Division

RSVP to [grantsrsvp@latrobe.edu.au](mailto:grantsrsvp@latrobe.edu.au)

## Quality Initiatives Grants 2007

Information sessions on the Quality Initiatives Grants will be held on the following dates and times:

- Albury-Wodonga, Monday 26 March, 1.00pm, Board Room, Level 1, Building 4
- Bendigo, Wednesday 28 March, 1.00pm, Business Board Room (BUS129)

- Bundoora, Thursday 29 March, 1.30pm, David Myers Meeting Room
- Mildura, interested staff please contact the Pro Vice-Chancellor (Academic)
- Shepparton, Tuesday 27 March, 1.00pm, Board Room, Welsford St campus.

The Quality Initiatives Grants assist groups to research, develop and/or implement a quality improvement initiative. Projects may be initiated from any organisational unit within the University, with a maximum of \$8,000 being allocated for each successful application.

The grants support the development, pilot or introductory phase of an activity and proposals are assessed in terms of the following criteria:

- the feasibility of what is proposed, including the appropriateness of the plan, timescale and resources applied to the project
- demonstration of a clear link between the funding proposals and the Quality Improvement Plans of the organisational unit as a whole
- the wider benefits of the proposal; that is, the degree to which the initiative may be applied by or bring benefit to other areas of the University
- the potential for the project to be implemented within a 12-month period.

Applications should be submitted to the Office of the Pro Vice-Chancellor (Academic) by 7 May 2007.

Staff wishing to apply for a grant may download the application form and guidelines from [www.latrobe.edu.au/quality/quality\\_initiatives\\_grants\\_2007.htm](http://www.latrobe.edu.au/quality/quality_initiatives_grants_2007.htm)

**Professor Denise Kirkpatrick**  
Pro Vice-Chancellor (Academic)

## Learning and Teaching Discussion Forums

Staff at Bundoora, Shepparton, Bendigo and Albury-Wodonga are invited to lunchtime sessions to meet with the Pro Vice-Chancellor (Academic), Professor Denise Kirkpatrick, to discuss a range of matters including the La Trobe Learning and Teaching Fellowships and the University's position on technologies to support learning and teaching. These discussions will follow from the information sessions on the Quality Initiatives Grants at each of the campuses as follows:

Albury-Wodonga, Monday 26 March, Board



**Centre for Dialogue**  
— A Centre of La Trobe University —

LA TROBE UNIVERSITY CENTRE FOR  
DIALOGUE AND READER'S FEAST  
2007 LECTURE SERIES:

### **Joseph A. Camilleri,**

Professor of International Relations and  
Director of the Centre for Dialogue at  
La Trobe University; author of several  
important books on international  
relations; has lectured extensively in  
Australia and internationally on peace  
and security, human rights, global  
governance and the Asia-Pacific region.

#### **1. Limits to Empire: An Evolutionary Perspective**

12.45pm—2.00pm

Thursday 22 March,  
La Trobe University

Bundoora Campus,  
Martin Building, Room 362

#### **2. Religion in Today's World: 'The Revenge of God?'**

6.30pm—8.00pm

Wednesday 28 March,  
Reader's Feast Bookstore

Midtown Plaza, Corner Bourke  
& Swanston Sts, Melbourne

#### **3. Citizenship and Governance in the 'Age of Terror and Global Warming'**

12.45pm—2.00pm

Thursday 5 April, La Trobe University  
Bundoora Campus, Martin Building,  
Room 362

#### **4. Asia's Transformation: Australia's Dilemma**

6.30pm—8.00pm

Wednesday 11 April, Reader's Feast  
Bookstore

Midtown Plaza, Corner Bourke &  
Swanston Sts, Melbourne

**R** Reader's  
Feast  
Bookstore

Room, Level 1, Building 4  
1.00 – 1.30pm, Quality Initiatives Grants  
1.30 – 2.00pm, Learning and Teaching matters

Bendigo, Wednesday 28 March, Business  
Board Room (BUS129)  
1.00 – 1.30pm, Quality Initiatives Grants  
1.30 – 2.00pm, Learning and Teaching matters

Bundoora, Thursday 29 March, David Myers  
Meeting Room  
1.30 – 2.00pm, Quality Initiatives Grants  
2.00 – 2.30pm, Learning and Teaching matters

Shepparton, Tuesday 27 March, Board Room,  
Welsford St campus  
1.00 – 1.30pm, Quality Initiatives Grants  
1.30 – 2.00pm, Learning and Teaching matters

Staff at the Mildura campus are asked to contact  
the Pro Vice-Chancellor (Academic) at [pvcac@latrobe.edu.au](mailto:pvcac@latrobe.edu.au) if they would like to discuss any  
of these items.

Further information about the Quality Initiatives  
Grants can be found at [www.latrobe.edu.au/quality](http://www.latrobe.edu.au/quality)

Information about the Learning and Teaching  
Fellowships can be found at [www.latrobe.edu.au/teaching/staff/grants-fellowships.htm](http://www.latrobe.edu.au/teaching/staff/grants-fellowships.htm)

#### **Carrick Awards for Programs that Enhance Learning**

Call for expressions of interest

Any individuals or teams interested  
in submitting an application for the Carrick  
Awards for Programs that Enhance Learning  
are invited to submit a one-page expression of  
interest to the Pro Vice-Chancellor (Academic).

This should include the proposed  
category of award, an overview of the program,  
a summary of supporting evidence and  
evaluation, and a list of potential supporting  
materials.

##### *About the Awards*

The Carrick Institute will confer up to 14  
Awards for Programs that Enhance Learning.  
These awards recognise learning and teaching  
support programs and services that make  
an outstanding contribution to the quality of  
student learning and the quality of the student  
experience of higher education. The programs  
and services that receive these awards must  
have demonstrated their effectiveness through  
rigorous evaluation and will set benchmarks for  
similar activities in other institutions.

*There are seven award categories:*

1. Assessment and feedback
2. Educational partnerships and collaborations  
with other organisations
3. The first-year experience
4. Flexible learning and teaching
5. Innovation in curricula, learning and teaching
6. Postgraduate education
7. Services supporting student learning

##### *Selection criteria*

All nominations will be assessed on  
evidence they provide in relation to the  
following four criteria:

- Distinctiveness, coherence and clarity of  
purpose - extent to which the program has  
clear objectives and systematic approaches  
to co-ordination, implementation and  
evaluation
- Influence on student learning and student  
engagement - extent to which the program  
targets identified needs and directly or  
indirectly enhances student learning, student  
engagement and/or the overall student  
experience of higher education
- Breadth of impact - extent to which the  
program has led to widespread benefits for  
students, staff, the institution, and/or other  
institutions, consistent with the purpose of the  
program
- Concern for equity and diversity - extent to  
which the program promotes and supports  
equity and inclusiveness by improving access,  
participation and outcomes for diverse  
student groups.

Detailed information about the  
awards is available at <http://www.carrickinstitute.edu.au/carrick/webdav/site/carricksite/users/siteadmin/public/2007%20Awards%20Guidelines.pdf>

Expressions of interest are due to the Office of  
the Pro Vice-Chancellor (Academic) via email:  
[pvcac@latrobe.edu.au](mailto:pvcac@latrobe.edu.au) by 30 March.

Those applicants whose applications will be  
supported by the University will be notified by  
6 April.

#### **Study Tour to Bosnia 1-22 July**

*Displacement, Flight and Refuge: Study Tour to  
Bosnia-Herzegovina* is an accredited Winter  
School subject available at second and third-  
year undergraduate level.

It is a unique three-week opportunity for  
students from a range of disciplines interested  
in gaining a first-hand understanding about  
Bosnia, the causes and consequences of the  
war, forced displacement and genocide, the  
continuing effect on communities, families  
and individuals, and the roles of local and  
international organisations in reconstruction  
and rehabilitation in post-conflict societies. The  
Study Tour is also available to a small number  
of professionals working in human rights and  
refugee fields as a component of training/  
professional development.

It includes several days with key government  
and NGOs in both urban and rural Bosnia-  
Herzegovina, eight days in Sarajevo, tours  
to Tuzla and Mostar, participation in the  
international conference *Responding to  
Genocide before it's too late*, the 12th  
anniversary commemoration of the Srebrenica  
Genocide in Potocari, and a four-day field trip  
to the ethnically cleansed village of Klotjevaca in  
eastern Bosnia.

Cost: \$3,000 for La Trobe students eligible  
for \$1,000 scholarship support; \$4,000 for  
non-La Trobe students. Study Tour leaders:  
anthropologist Professor Sandy Gifford, historian  
Professor Ron Adams and award-winning  
Bosnian writer and commentator  
Hariz Halilovich.

Further information available from Estelle  
Purchas ([e.purchas@latrobe.edu.au](mailto:e.purchas@latrobe.edu.au)), School  
of Social Sciences, Refugee Health Research

Centre, Room 461 Martin Building, Bundoora  
extn 5874.

Free information session: 6.00 - 7.30pm,  
Wednesday 21 March in Glenn College Airport  
Lounge.

### Keynote addresses from Learning and Teaching Week on DVD

The Academic Development Unit now has all  
keynote addresses from the 2006 Learning and  
Teaching Week, as well as most of the VC's  
Showcase, available on DVD. The DVDs are for  
loan to individual staff members or departments  
and schools. Please contact Linda Hughes on  
a.hughes@latrobe.edu.au if you want to borrow  
any of them.

**Dr Erika Martens**

*Director, Academic Development Unit*

### Chancellor to launch Innovation & Knowledge Transfer Division

Tuesday 20 March

All staff are invited to join us for the official  
launch of the Innovation & Knowledge Transfer  
Division being held at the Conference Centre,  
2 Research Avenue, R&D Park on Tuesday 20  
March.

The Chancellor, Mrs Sylvia Walton, will launch  
the new division between 10.00am and  
11.00am, followed by an open day that will run  
until 4.00pm.

If you are interested in attending the official  
launch please RSVP to Danielle Mackie, on  
9479 3662 or email d.mackie@latrobe.edu.  
au If you would like to join us after the official  
opening for the open day between 11.00am  
and 4.00pm please feel free to do so - no need  
to RSVP.

**The IKT Team**




### OfficeMax slashes the price of recycled copy paper

After an initial pilot study and negotiation  
by our Procurement & Business Services Unit,  
we are pleased to announce some good  
environmental news.

After meeting with EnviroSMART, OfficeMax has  
agreed to slash the prices of Evolve (1961314)  
and Vision Pure White (1978667) copy papers  
to help the University reduce its environmental  
footprint. These are the two most environmentally  
friendly copy papers on the market and are now  
available for \$4.70 (Vision Pure White) and  
\$4.80 (Evolve) ex GST per ream.

Each year in Australia an area about the size  
of ACT is logged and over half of this wood is  
chipped for paper. We have lost enough forest  
to bushfire this year; help reduce the amount  
lost to paper production by making green  
purchasing choices!

The University of Melbourne, Monash University



La Trobe University, Bundoora, Victoria  
26 & 27 September, 2007

## Evidence in practice: leading the way in aged care

### Call for Abstracts - submissions extended to 30 March

On behalf of the Australian Centre for Evidence Based Aged Care (ACEBAC) we have great pleasure in inviting you to participate in the 2007 ACEBAC Conference 'Evidence in Practice: leading the way in aged care'. The conference will be held at La Trobe University, Bundoora on 26 and 27 September.

The conference supports the need for more understanding of evidence based best practice and the implementation of such knowledge in the care of older people and their families.

It will draw together leading researchers in evidence based practice with other professionals involved in implementing evidence based practice.

For further information including instructions for abstract submissions, see [www.latrobe.edu.au/acebac](http://www.latrobe.edu.au/acebac)

and Swinburne Universities are just three of our contemporaries who are buying these papers in large quantities. Help La Trobe step up to the mark by making the environmentally friendly choice next time you order paper for your office.

### Chinese government scholarship

Applications are invited from Australian students for a scholarship to support two semesters of study in China. Scholarship holders may study Chinese language or any other subject if their language skills are appropriate. The award may commence in either September 2007 or February 2008. Full details can be obtained from Dr Yuzeng Xu in Asian Studies, y.xu@latrobe.edu.au. Applications close with Dr Xu on Friday 13 April 2007.

### Eligible students invited to Golden Key

The Golden Key International Honours Society recently wrote to students eligible for membership. Interested students will meet La Trobe University Chapter committee members at an information table in the Agora, Bundoora Campus, on Thursday 22 March between 11.00am and 2.00pm or at an information evening starting at 5.30pm in Function Room 2 in the Union Building. Further information is at [www.goldenkey.org](http://www.goldenkey.org)

### Buildings and Grounds newsletter now available

In accordance with University policy, the Buildings and Grounds Newsletter will only be available electronically. Access to the latest copy of the Buildings and Grounds Newsletter can be found on the following website <http://www.latrobe.edu.au/bg/>

If you have any queries please call Bundoora extn 1959.

## Seminars

### Botany

Wednesday 21 March, 12.00 - 1.00pm,  
Botany Seminar Room 460, Biological Sciences  
1 Building.

#### 'Peat soils of the Australian Alps.'

Ms Samantha Grover, Department of  
Agricultural Sciences, La Trobe University.

### Environmental Science

Thursday 29 March, 1.00pm, Room 163,  
Physical Sciences 4 Building.

#### 'Design for energy efficiency.'

Alan Pears, Sustainable Solutions.

Thursday 5 April, 1.00pm, Room 163, Physical  
Sciences 4 Building.

#### 'Calculating ecological footprints.'

Julian Donlen, National Centre for Sustainability,  
Swinburne University.

### Health Sciences, Bendigo

Tuesday 20 March, 4.00pm, McKay Lecture  
Theatre.

#### 'Clinician's understanding of what is love in nursing and midwifery.'

Dr Les Fitzgerald, Senior Lecturer, School of  
Nursing & Midwifery, La Trobe University.

This seminar will present nurses' and midwives' answers to the question of what is love in nursing and midwifery. The study design incorporated Neo-Socratic dialogue, which enabled 56 nurses and midwives from Australia, Singapore and Bhutan to explicate their understanding of the love embedded in their practice of nursing and midwifery. The answers these clinicians provide are a result of their considered exploration of different clinical practice examples of love. What these nurses and midwives make clear is that love in nursing is qualitatively different to caring.

This presentation will also briefly explain the Neo-Socratic dialogue process participants used in their analysis of the data.



THESIS ELEVEN CENTRE  
FOR CRITICAL THEORY

and

SOCIOLOGY AND ANTHROPOLOGY  
PROGRAM  
SCHOOL OF SOCIAL SCIENCES

## Uses and Abuses of Gramsci – A Master Class with

### Alastair Davidson

Alastair Davidson was a founding editor of *Thesis Eleven*. He has held chairs at Monash, Sydney, Princeton, Rutgers and Wollongong, and is now Adjunct Professor of the *Thesis Eleven* Centre. He is the historian of Australian and Italian communism, biographer of and leading authority on Gramsci, and more recently has written books on the State, subject, citizenship and human rights.

He will give three master classes on the uses and abuses of Gramsci.

**Wednesday 21 March, MARB 488**  
– Stuart Hall and Gramsci

**Wednesday 4 April, MARB 488**  
– Edward Said and Gramsci

**Wednesday 18 April, SS423**  
– Robert Cox, Stephen Gill and Gramsci

**Classes will run from 3.00 – 5.00pm.**

Each meeting will begin with a 30-minute paper by Alastair Davidson followed by open discussion. Prereading of a text for discussion will be available in advance from the Sociology General Office. Discussion will be free-ranging and might cover such figures and publications as R. Guha and Subaltern Studies; Raymond Williams' *Culture and Society*; and Etienne Balibar's *Race, Nation and Class*. The object is to arrive at some conclusions about the legitimate limits to the use of Gramscian terms like 'hegemony', 'intellectuals', 'passive revolution', and 'common sense'.

Enquiries: Professor Peter Beilharz  
Director, Thesis Eleven Centre, extn 2753

### Human Communication Sciences

Wednesday 4 April, 3.30pm, HU3 421.

**'Phonetogram as a tool in the voice clinic.'**  
Professor Eva Holmberg, Speech and Voice Scientist, Karolinska Institute, Sweden, and IAS Visiting Fellow.

## Seminar

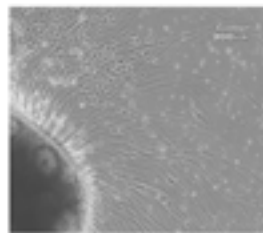


The Department of Biochemistry invites you to attend

### Human Embryonic Stem Cells and Their Differentiation Down the Neural Pathway

Dr Mirella Dottori (Centre for Neuroscience and Dept of Pharmacology, University of Melbourne)

The derivation and propagation of human embryonic stem cells (hESC) has opened up several exciting possibilities for their therapeutic use for treatment of neurodegenerative diseases and injury. Dr Dottori's studies are aimed at investigating the signals involved in neural induction from hESC and determine the key factors that regulate neural stem cell maintenance and differentiation to mature cell types.



**DATE:** Wednesday March 21st, 2007

**TIME:** 4pm

**VENUE:** Department of Biochemistry  
Seminar Room  
Level 3  
Physical Sciences 4  
La Trobe University  
(Bundoora campus)

Dr Mirella Dottori completed her BSc(Hons) in Pathology at University of Melbourne and her PhD studies at Walter and Eliza Hall Institute. Dr Dottori undertook a Human Frontier's fellowship at the Salk Institute for Biological Studies, La Jolla, USA. She returned to Australia as a Howard Florey Fellow where she joined Professor Martin Pera's lab at Monash University working on human embryonic stem cells. Recently Dr Dottori established her laboratory at the Centre for Neuroscience, University of Melbourne.

For further information please contact:

Dr Giselle Roberts  
Department of Biochemistry  
La Trobe University  
Phone: 9479 2196  
Email: g.roberts@latrobe.edu.au

### Management and Marketing

Thursday 22 March, 11.00am, room 222,  
Donald Whitehead Building.

**'What makes Organising work? A model of the stages and facilitators of organising.'**

Dr Timothy Bartram and Dr Rosaria Burchielli,  
School of Business, La Trobe University.

Thursday 29 March, 11.00am, room 415,  
Donald Whitehead Building.

**'Work-life balance? It ain't necessarily so.'**

Dr Jean Jenkins, Cardiff University.

### Microbiology

Wednesday 21 March, 12.00noon, Thomas  
Cherry Lecture Theatre.

**'A potential H5N1 influenza pandemic and our tools to combat this.'**

Dr Lorena Brown, Department of Microbiology and Immunology, The University of Melbourne, Parkville.

Enquiries: Dr Vilma Stanisich, extn 2317, or see  
<http://www.latrobe.edu.au/microbiology/seminars.html>

### Philosophy

Wednesday 21 March, 11.00am, CACE School  
Seminar Room, Hu2.431 (note a change of  
venue for seminars this year, 2007).

**'Lessons of history: generalisations, trends and inspirations.'**

Dr Behan McCullagh, Honorary Associate,  
Philosophy Program, La Trobe University.

Enquiries: John Fox, extn 2986, email J.Fox@latrobe.edu.au

Wednesday 28 March, 11.00am, CACE School  
Seminar Room, Hu2.431 (note a change of  
venue for seminars this year, 2007).

**'Subsistence rights and moral realism.'**

Stan van Hooff, Deakin University.

Enquiries: John Fox, extn 2986, email J.Fox@latrobe.edu.au

### Psychological Science

Thursday 22 March, 4.00 – 5.00pm, Room  
217, George Singer Building.

**'Beyond sound-letter correspondences: spelling in adults.'**

Dr Virginia Holmes, University of Melbourne.  
Enquiries: m.heysen@latrobe.edu.au

**SEMINAR**

**“Are the world fisheries in crisis?”**

We often hear about the crisis in world fisheries. Looking at the aggregate world catches, this crisis is difficult to see. What we see is stagnation; we have apparently reached the limit of what can be taken out of the oceans. But there are problems, a number of fish stocks have been totally depleted, at least from a commercial point of view, although some have recovered. The exclusive economic zones, established in the 1970s, offer a way to limit overfishing and avoid fish stock collapses by giving individual countries incentives to preserve fish stocks in their own interest. With powers of jurisdiction in place, it is possible to establish individual fishing rights which give individual companies incentives to maximize efficiency and promote good fisheries management as a way of preserving the value of their rights. The development of the concept of the 200-mile exclusive economic zone is an interesting case of how development of economic institutions can be influenced by seemingly irrelevant factors, making this process similar to evolutionary processes in nature.

Guest Speaker:

**Professor Rögnvaldur Hannesson**

*Professor of fisheries economics at the Norwegian School of Economics and Business Administration in Bergen, Norway. He is the author of several books on fisheries economics and petroleum economics, as well as a large number of journal articles and book chapters. He has done consultancy work on fisheries for the FAO, the OECD, the World Bank, the governments of Iceland and Norway, and participated in a review of individual fishing quotas in the United States in 1997-98.*

**11.30 a.m., Friday 23rd March 2007**

**Seminar Hall**

**Michael J Osborne Centre - Institute for Advanced Study**

(Melways Ref: Map 573, F1)

Seminar Convenor:

Julia Anderson – phone: 9479 3461 or email: [janderson@latrobe.edu.au](mailto:janderson@latrobe.edu.au)

Thursday 29 March, 4.00 – 5.00pm, Room 217, George Singer Building.

**‘Role of frontal midline structures for self control of behaviour.’**

Professor Rüdiger Seitz, Heinrich-Heine University, Düsseldorf.

**Public Health**

Wednesday 21 March, 1.00 – 2.00pm, Health Sciences 1, Room 206/207.

**‘Aspects of legitimacy and global governance in managing global public health.’**

Carmen Huckel, Doctoral Candidate, University of Tübingen, Germany.

**Research Centre for Linguistic Typology**

Wednesday 28 March, 4.00pm RCLT Reading Room, Building S6, Southern Drive, Bundoora.

**‘A and O mirror images in the Tibeto-Burman languages of Nepal.’**

Dr David E. Watters, Tribhuvan University.

For more information, see <http://www.latrobe.edu.au/rclt/seminarlist.htm>

**Research Centre for Linguistic Typology 2007 Local Workshop**

The Workshop will meet fortnightly (except for the first two sessions) on Wednesdays, 4.00pm - approx 5.30pm, in the RCLT Reading Room.

First meeting: Wednesday 14 March, 4.00pm, RCLT Reading Room.

**‘Word-class-changing derivations in typological perspective.’**

At the first meeting, Sasha Aikhenvald will present a position paper dealing with the typological parameters for the analysis of semantics and distribution of word-class-changing derivations across the world’s languages.

At subsequent meetings, members of the Workshop will each give a 30-minute presentation on word-class-changing derivations in a language on which they have specialised knowledge. At the end, members of the Workshop will join in putting forward appropriate inductive generalisations.

Wednesday 21 March, 4.00pm  
Françoise Rose, Trinitario (Arawak)  
Sasha Aikhenvald, Tariana (Arawak)

Wednesday 4 April, 4.00pm  
Simon Overall, Aguaruna (Jivaroan)  
R. M. W. Dixon, Jarawara (Arawá)

Further meetings will be held on 18 April, 16 May, 30 May, and so on.  
Everyone is most welcome to attend.

**Social Science**

Wednesday 21 March, 12.30pm, Social Science Common Room (488 Social Sciences).

**‘Deep Surfaces - What kind of argument can an observational movie make?’**

Gary Kildea, Ethnographic Film Unit, Anthropology Department, ANU.

Gary Kildea’s films (including Trobriand Cricket

1974) are among the most popular in the national ethnographic archive.

Wednesday 4 April, 12.30pm, Social Science Lecture Room (330 Social Sciences).

**Public seminar convened in association with La Trobe Politics Society.**

‘Fragile states in Africa - Darfur and beyond.’

Professor Tony Barnett, London School of Economics and Dr Alex De Waal, Harvard University.

**Social Work and Social Policy**

Monday 19 March, 1.00 - 2.30pm, Health Science Building 3, Room 407.

**‘Child abuse trauma - the Take Two experience.’**

Associate Professor Margarita Frederico, Annette Jackson and Carly Black, Take Two Research Team, School of Social Work and Social Policy, La Trobe University.

**Jobs at La Trobe**

Applicants must obtain a position description and details of how to apply by visiting the website at [www.latrobe.edu.au/jobs/](http://www.latrobe.edu.au/jobs/) or by emailing [jobs@latrobe.edu.au](mailto:jobs@latrobe.edu.au) or by telephone (03) 9479 1365, quoting appropriate reference numbers. La Trobe University is an Equal Opportunity Employer.

**The following positions are open to the public:**

**50004960 Professor in Finance**, in the School of Business, Faculty of Law and Management. Full-time, continuing position. Closing date: 27 April 2007.

\$120,391 pa

**50000853 Associate Professor in Finance**, in the School of Business, Faculty of Law and Management. Full-time, continuing position. Closing date: 27 April 2007.

\$93,462 - \$102,965 pa

**50019503 Professor/Associate Professor in Macroeconomics**, in the School of Business, Faculty of Law and Management. Full-time, continuing position. Closing date: 27 April 2007.

\$93,462 - \$102,965 pa (Level D)

\$120,391 pa (Level E)

**50019502 Professor/Associate Professor in Management**, in the Graduate School of Management, Faculty of Law and Management. Full-time, continuing position. Closing date: 13 April 2007.

\$93,462 - \$102,965 pa (Level D)

\$120,391 pa (Level E)

**50019326 Professor/Associate Professor, Allied Health**, at Northern Health, in the Faculty of Health Sciences, Bundoora Campus and Bundoora Extended Care. Full-time, five-year, fixed term position. Closing date: 23 March 2007.

\$93,462 - \$102,965 pa (Level D)

\$120,391 pa (Level E)

**SEMINAR**

**“The second homes boom: policy debates and community impacts”**

The ownership of second and more homes for leisure use in Ireland and the UK has grown rapidly in recent years, leading to heated debates and contested policy initiatives. Planning restrictions in high amenity areas resulted in the purchase of existing homes for use as holiday homes; property values escalated, pricing out local people on low incomes, and attractive villages have been transformed into ‘ghost towns’ for much of the year. Much new development in many areas is also aimed at the second homes market, especially in coastal areas, around inland waterways and high amenity countryside with attractive villages. Rapid growth in the ownership by affluent households of second and more homes raises many public policy concerns: strategic and local planning, especially land allocation for housing development and the provision of affordable housing; inter-governmental resource allocation relating to local service provision; the sustainability of communities in attractive coastal and countryside areas; and the environmental impacts of much of this new development. Professor Paris will introduce ongoing research in Northern Ireland, where rapid economic growth is associated with dramatic urban and regional change and explosive growth of second homes in attractive but environmentally sensitive areas. He will discuss a case study of rampant second home development adjacent to the World Heritage listed Giant’s Causeway and Causeway Coast and relate that work to current debates and policy concerns in Australia, especially debates about so-called ‘Sea Change’ and ‘Tree Change’.

Guest Speaker:  
**Professor Chris Paris**

*Professor of Housing Studies, University of Ulster, Northern Ireland. Current research interests include second home ownership in affluent societies, housing needs and aspirations of older citizens, and changing urban & regional systems in Ireland. He has worked widely within urban and regional studies in the UK, Ireland, Australia and Hong Kong for 35 years. He has written and edited 17 books and major monographs, including Housing Australia (1993) and authored more than 100 papers and book chapters. IAS Distinguished Fellow, La Trobe University, Bundoora.*

**12.30 p.m., Wednesday 21st March 2007**

**Seminar Hall**

**Michael J Osborne Centre - Institute for Advanced Study**

(Melways Ref: Map 573, f1)

Seminar Convenor:

Julia Anderson – phone: 9479 3461 or email: [janderson@latrobe.edu.au](mailto:janderson@latrobe.edu.au)

**Advertisements**

**For sale**

1989 Nissan Pulsar Vector GL, 192,530 kms, manual, navy blue, good condition incl roadworthy. Rego to Sept 2007, Dolby system security coded radio/cassette, new tyres, immobiliser. Good second car or excellent for student. \$3,299 ONO. Contact Dale, 0411 412 564.

1985 white Toyota Corona, great first car, excellent condition inside and out, reg. until June 2007, automatic, good tyres, Heidelberg area. \$1200 ONO. Ring 0414 716 773.

Mountain bike cross: KHS model, great condition; 19" frame/3 speeds/21 gears; front wheel suspension; detachable front & back wheels; road tyres; ‘Shimano’ gears & brakes; water bottle holder/front light/U-lock & key included. \$350 ONO. Contact Jane Schleiger, extn 5828.

**Departmental sale**

Konica Minolta Photocopier CS Pro EP1083 plus 14 cartons of toner, \$300. This model is roughly 10 years old, serviced regularly and works well. Contact Mark Harris - Online Teaching Support Team on extn 5990.

**Yoga**

Greensborough Yoga - Beginners classes starting on 23 April. Continuing in the Iyengar tradition. Call 9555 6736 or visit [vaughanallanyoga.com.au](http://vaughanallanyoga.com.au)



the Faculty of Education, Bundoora and Bendigo campuses. Full-time, fixed term position. Closing date: 30 March 2007.

\$63,772 - \$73,254

**50017703 Windows Systems Administrator (HEO8)**, in Information Technology Services. Full-time, continuing. Closing date: 30 March 2007.

\$63,772 - \$73,254

**50002336 Prospective Student Officer (HEO6)**, in the Office for Prospective Students. Part-time (40% - job share, Mon & Tues), fixed term position. Closing date: 23 March 2007.

\$51,372 - \$55,609 pro rata

**50003072 Technical Officer (HEO5)**, in the Department of Microbiology, School of Life Sciences. Full-time, continuing position. Closing date: 23 March 2007.

\$44,286 - \$49,872

**50019481 Timetable Officer (HEO5)**, in the Office of the Pro Vice-Chancellor, Albury-Wodonga campus. Part-time (50%), continuing position. Closing date: 23 March 2007.

\$44,286 - \$49,872 pro rata

**50006703 Teacher Trainer/Language Teacher**, in the Language Centre. Two full-time, fixed term positions. Closing date: 6 April 2007.  
\$38,915 - \$55,225

**50015428 Unix Team Leader (HEO9)**, in Information Technology Services. Full-time, continuing position. Closing date: 23 March 2007.  
\$74,403 - \$78,956

**50019575 Educational Designers (HEO8)**, in the Office of the Pro Vice-Chancellor (Academic). Five full-time, fixed term positions. Closing date: 30 March 2007.  
\$63,772 - \$73,254

**50019580 Education Designer (HEO8)**, in