

## FACT SHEET September 2007



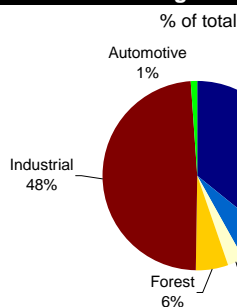
### Key Financial Data

	2007T	2006	Change
Total Revenues (USD millions)	290	265	9%
Freight Revenues (USD millions)	280	258	9%
Carloads (thousands)	275	260	6%
Operating Ratio (%)	67.6	70.2	260 bps
Locomotives	150	150	
Rail Cars	7,400	7,200	

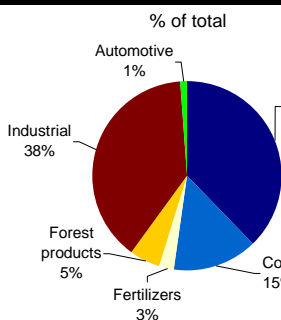
### Highlights

- Largest Class II railroad in the US
- Only Class II railroad with interchanges to all seven Class I railroads
- 2,500 miles of track serving 8 states; Illinois, Iowa, Minnesota, Missouri, Nebraska, South Dakota, Wisconsin and Wyoming
- Access to Twin Cities, Kansas City, Chicago and key water ports
- Approximately 1,000 employees with 375 unionized
- Improved train accident and personal injury performance

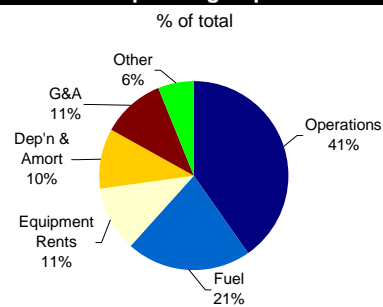
### 2006 Freight Revenues



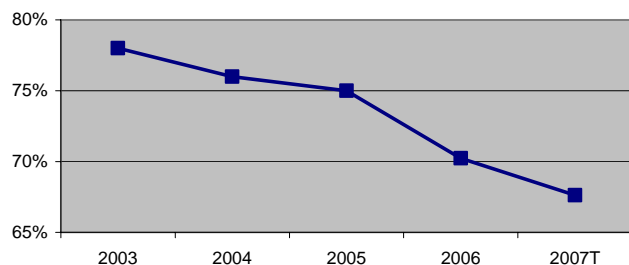
### 2006 Carloads



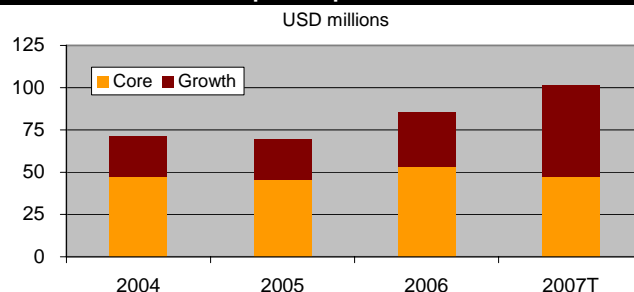
### 2006 Operating Expenses



### Operating Ratio



### Capital Expenditures



NOTES: All data is provided by DM&E/IC&E

T denotes target; positive change is favourable; negative change is unfavourable.

Operating Ratio is the ratio of total operating expenses to total revenues and has been calculated excluding non-recurring and other items.

Locomotives and rail cars are owned and leased.

This Fact Sheet contains certain forward-looking statements relating but not limited to the anticipated financial performance of DM&E and its subsidiaries. Undue reliance should not be placed on forward-looking information as results may differ materially.