

# Galt Gardens

## History

Simply known as The Square in its early days, this section of land was set aside from the very start of urban development in Lethbridge. The land was owned by the Galt family who were founders of the City of Lethbridge, and reserved as a parkland by Elliot Galt in the original town plan surveyed in 1885.

This parcel of prairie grassland became the focal point of Lethbridge as the business core of the town began to develop around the streets and avenues which marked the park's boundaries. In short time, the citizens of Lethbridge adopted the park as their own and it became the venue for most town events, including serving as the main arena for any sports events. It continued to serve as an impromptu meeting place for the city until 1909 when Elliot and John Galt donated the land to the city to be held in perpetuity as park lands.

The park was named Galt Gardens in honour of the city's patron family.

Trees had been planted around the periphery of the park as early as 1901, but in 1910 serious plans for development were drawn up.

The City Fire Department took on much of these landscaping responsibilities and by the late 1920s the park took on the air of a formal garden. The beauty and charm of Galt Gardens in that period has never been surpassed.

Galt Gardens stood as the centerpiece of a booming and industrious city of Alberta.



## Location

**Galt Gardens Park** is the centerpiece of downtown Lethbridge, 9.16 acres in size and is situated between 5th Street on the West, 7th Street on the East, 3rd Avenue on the South and 1st Avenue on the North.

Tall stately trees, colourful flower beds and beautifully manicured lawns, the park is a shady retreat for downtown strollers.

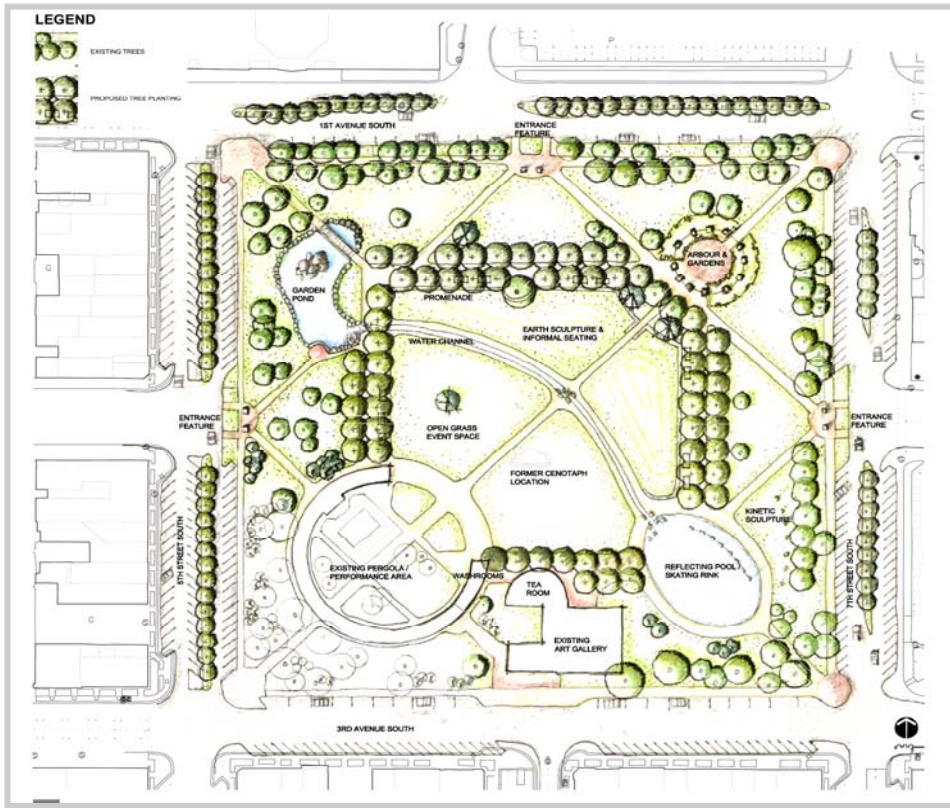
Also situated in this downtown park is the Southern Alberta Art Gallery.

Many major events are held in this park year round and revitalization plans for the park have begun.



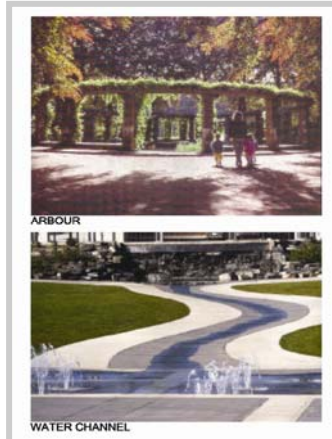
For more information on Galt Gardens , or to book any event in the park call the Community Services office at (403)320-3011 or check out our website at [www.lethbridge.ca](http://www.lethbridge.ca)

# Galt Gardens



## Revitalization of Galt Gardens

- Phase one of the master plan was developed in 1991.
- In 2003 the Lethbridge Rotary Club approached the City of Lethbridge to revitalize Galt Gardens as Rotary 2005 Centennial Project.
- The Master Plan went through community input and a recommendation was approved by City Council.
- The Master Plan is estimated at a cost of \$3.7M and has four sub-phases
- Funding has been committed from the City of Lethbridge, Province (Legacy phase III funding program) and Canbra Foods Limited to complete phase 1 of the project.
- Project will commence construction in 2005.



Watch for more information in 2005 on this exciting new project. Call Dave Mitchell, Parks Planning Manager for the City of Lethbridge at 320-3019 if you have any questions.

*parks...*

&

*...pathways*

*playgrounds...*



LEISURE SERVICES

CITY OF  
*Lethbridge*