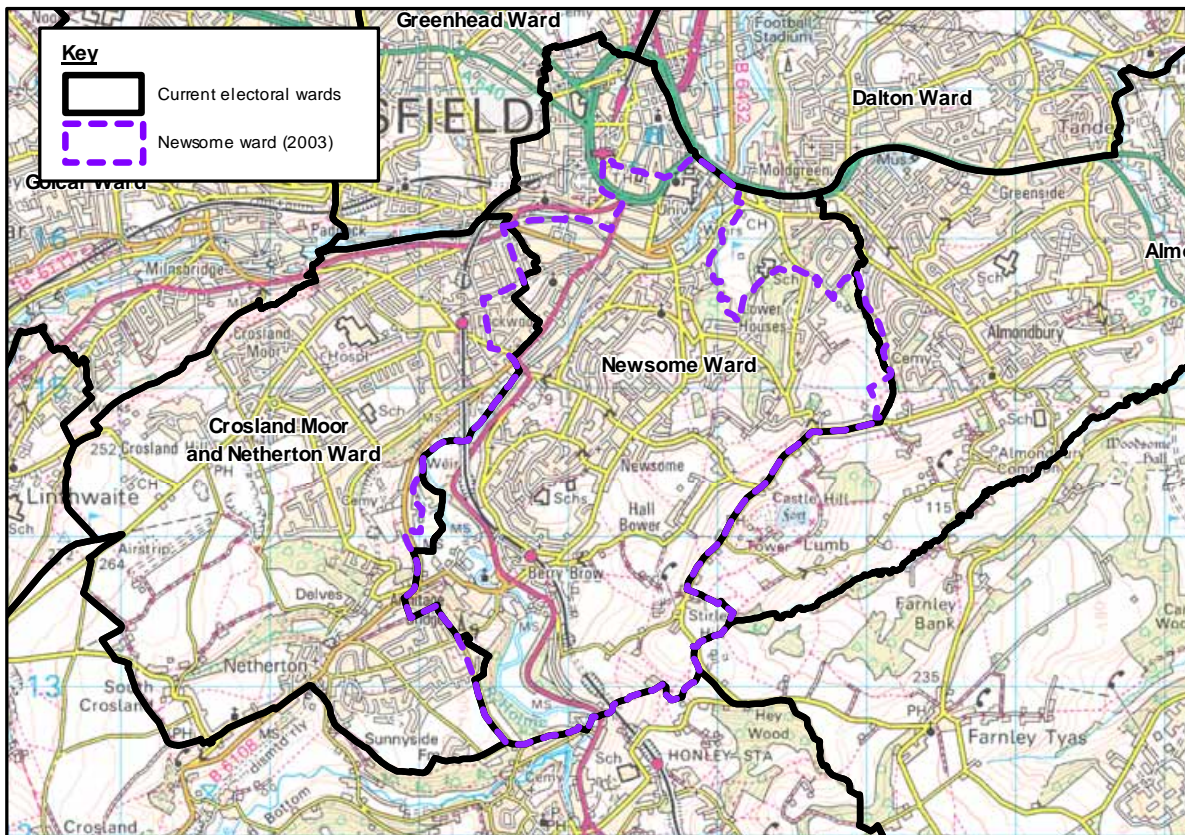


UNEMPLOYMENT, EMPLOYMENT, WELFARE BENEFITS (Updated December 2005) Newsome Ward (2003 Electoral Ward)

MAP OF CURRENT ELECTORAL WARDS AND FORMER 2003 ELECTORAL WARD



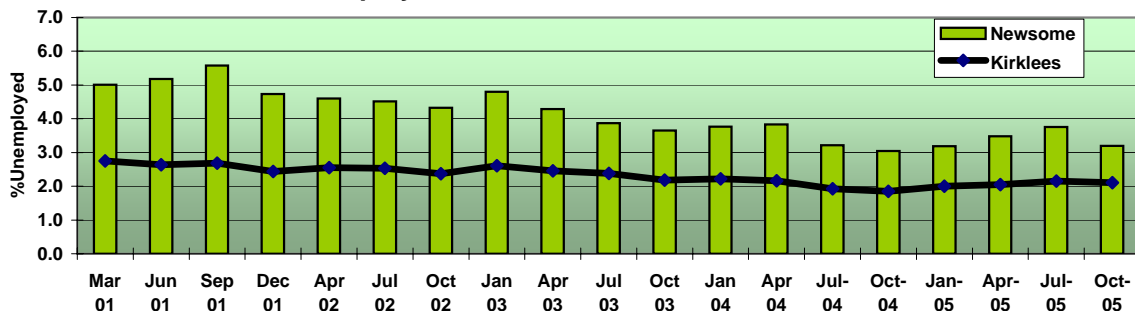
Ordnance Survey mapping has been used in this publication to show the boundaries of Electoral Wards.
© Crown Copyright. All rights reserved. Kirklees M.C., Licence Number 100006142, 2004.

UNEMPLOYMENT OCTOBER 2005 (CLAIMANT COUNT)

	Newsome Ward (2003 Electoral Ward)		Kirklees		Great Britain	
	No.	%	No.	%	No.	%
Total (working age rates)¹	297	3.5	5,031	2.1	842,433	2.3
Long term – over 6 months ²	75	25.3	1,005	20.0	268,460	31.9
Long term – over 1 year ²	15	5.1	285	5.7	118,570	14.1
Youth - aged under 25 years ²	95	32.0	1,645	32.7	257,595	30.6

Source: ONS. ¹ Rates are based on the number of people claiming Jobseekers' Allowance as a percentage of the working age resident population of each Ward. ² Percentages in these rows are a % of total unemployed.

Unemployment March 2001 to October 2005



Produced by the Corporate Development Unit

Telephone: 01484 221762 Fax: 01484 221755

Email: andy.shackleton@kirklees.gov.uk



UNEMPLOYMENT, EMPLOYMENT, WELFARE BENEFITS
(Updated December 2005)
Newsome Ward (2003 Electoral Ward)

EMPLOYMENT BY SECTOR DECEMBER 2004

Type of industry	Newsome Ward (2003 Electoral Ward)		Kirklees		Great Britain	
	No.	%	No.	%	No.	%
Construction/Primary Production	188	2	7,885	5	1,566,010	6
Manufacturing	1544	15	35,276	22	3,092,131	12
Services	8677	83	117,738	73	21,366,563	82
All Industries & Services	10408	100	160,899	100	26,024,705	100

Source: ONS Annual Business Inquiry 2004. NB: Figures shown are for people employed in the ward, (not an employment profile of residents of the ward). Totals may not sum due to rounding.

WELFARE BENEFITS

Income Support Claimants, August 2004	Newsome Ward (2003 Electoral Ward)		Kirklees		England and Wales	
	No.	%	No.	%	No.	%
All claimants ¹	855	10.1	14,775	6.4	1,946,020	6.3
In receipt of disabled premium ³	435	50.9	7,590	51.4	972,475	50.0
In receipt of lone parent premium ³	330	38.6	5,175	35.0	731,840	37.6
Other & Over 60s not on PC ³	95	11.1	2,010	13.6	241,710	12.4

Pension Credit, August 2004

All claimants ²	845	30.6	18,590	24.8	2,334,895	21.5
Guarantee Credit Only ³	280	33.1	5,255	28.3	682,585	29.2
Guarantee and Savings Credits ³	400	47.3	9,210	49.5	1,161,145	49.7
Savings Credit Only ³	160	18.9	4,125	22.2	491,165	21.0

Incapacity Benefit Claimants, August 2004

All claimants (aged 16 and over) ⁴	780	8.6	16,425	6.6	2,138,440	6.4
---	-----	-----	--------	-----	-----------	-----

Severe Disability Allowance Claimants, August 2004

All claimants (aged 16 and over) ⁴	95	1.1	2,050	0.8	283,500	0.9
---	----	-----	-------	-----	---------	-----

Attendance Allowance Claimants, August 2004

All claimants (aged 65 and over) ⁵	305	14.0	7,465	13.1	1,244,470	15.0
---	-----	------	-------	------	-----------	------

Disability Living Allowance Claimants, August 2004

All claimants all ages ⁶	855	6.1	19,615	5.1	2,341,615	4.5
-------------------------------------	-----	-----	--------	-----	-----------	-----

Child Benefit August 2003

Total children in receipt of benefit	3,120		93,705		11,625,048	
Total families with children in receipt of benefit	1,690	100.0	51,015	100.0	6,394,868	100.0
Families with 1 child ⁷	770	45.6	21,640	42.4	2,689,513	42.1
Families with 2 children ⁷	580	34.3	19,990	39.2	2,577,723	40.3
Families with 3 children ⁷	225	13.3	6,570	12.9	838,484	13.1
Families with 4 or more children ⁷	115	6.8	2,810	5.5	289,148	4.5

Source: DWP Information Directorate, HM Revenue and Customs.

¹Percentage of all aged 16 to 59. ²Percentage of all aged 60 and over. ³Percentage of all claimants. ⁴Percentage of all aged 16 to 64. ⁵Percentage of all aged 65 and over. ⁶Percentage of population all ages. ⁷Percentage of all families with children in receipt of benefit

Produced by the Corporate Development Unit
Telephone: 01484 221762 Fax: 01484 221755
Email: andy.shackleton@kirklees.gov.uk

