

Glendale The Jewel City

Glendale is one of only a few “Charter Cities” in California. Its status as a municipal corporation chartered under the Constitution of the State of California allows Glendale greater local control over municipal issues such as land usage than it would if it were a General Law City. Only seven other municipalities in Los Angeles County can claim this honor.

Glendale has excellent parks, libraries, recreation and mountain reserves. Glendale’s residents enjoy numerous City parks and recreational facilities, covering 264 acres and nearly 4,900 acres of publicly owned open space, as well as 7 libraries scattered strategically throughout the city. Other City maintained facilities and recreational activities are available for the public’s use. Some of the most popular facilities include Verdugo Park, Brand Park, the Sports Complex, the Civic Auditorium, the Tea House, and historical buildings such as the Casa Adobe, Verdugo Adobe, and the Doctors’ House.

The foothills and canyons that cradle its neighborhoods shape Glendale’s character. Many of these areas have been set aside as parkland or mountain reserves, forever protecting the natural environment of our community and providing the backdrop that is a contrast for Glendale’s otherwise urban setting.



Glendale has state of the art health and safety services. The City of Glendale is committed to providing proactive law enforcement and high quality police services for the community, keeping its residents safe from crime. The City credits the professionalism of its officers and their close relationship with the community as contributing to a low crime rate.

The Glendale Fire Department has achieved a Class 1 Rating by the Insurance Service Office, indicating that it has exceptional fire fighting abilities, personnel, response times, fire prevention efforts, water supply availability and communications.

There are three regional medical centers, one county health center, and numerous social service agencies located in Glendale to ensure that residents have access to superior health care.

Glendale is a certified “Keep America Beautiful” Affiliate. Glendale is one of over 500 communities world-wide designated as Keep America Beautiful Affiliates. This certification recognizes the city’s commitment to waste reduction and litter prevention.



Glendale has been designated a “California Healthy City.” One of only 50 cities statewide to receive this prestigious designation, Glendale has achieved this honor since 1996 -- due to the efforts of the Glendale Healthier Community Coalition. Throughout the year, the Coalition sponsors health fairs, educational seminars, free immunizations, and other programs to encourage and enable Glendale residents to lead healthy lifestyles.



Glendale is a “Tree City, USA.” The City of Glendale has been designated a Tree City, USA by the National Arbor Day Foundation every year since 1984. This honor recognizes the commitment to urban forestry projects supported by Glendale’s Tree Advisory Board, and evidenced by the City’s annual Arbor Day celebration and tree ordinance.

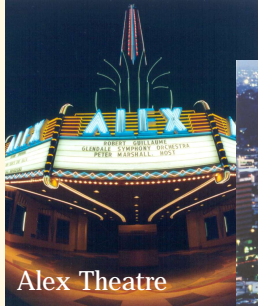


Glendale promotes high property values and community spirit. Due to City programs addressing the health, safety, property maintenance and building standards within our community, Glendale property values are among the highest in Los Angeles County. Citizen pride and residents’ care for the quality of their neighborhoods contribute to high property values as well.

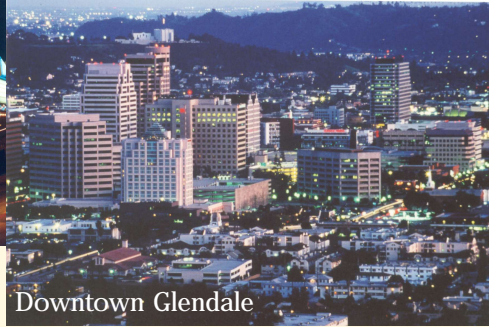
Community spirit is strong in Glendale. Neighborhoods are clean, business districts are built smartly and social amenities are abundant. Community involvement among businesses and property owners is encouraged in Glendale through several Merchants and Homeowners Associations.

Glendale’s housing is second to none. Glendale has a diverse and affordable mix of housing choices, featuring an eclectic mix of styles and types. The single family dwellings include a large inventory of those constructed during the development boom of the 1920s and 1930s. These tracts are found in several neighborhoods with charming custom built Spanish Colonial, Mediterranean, and Tudor Revival style homes. Some of these residences are impressively large, but many are modest in size, affordable, yet beautiful. Prominent architects of the day like Lloyd Wright, Arthur Lindley and Rudolph Schindler practiced here during this period. Other elements of Glendale’s housing include houses and multi-unit dwellings from the stylish mid-20th century era, plus contemporary styles. The diverse array of high quality multi-unit dwellings, particularly in the central area of the city, includes condominiums and rental apartments, many built in the 1980s or later. Glendale’s neighborhoods offer housing types desirable to every income level, suited to every need and lifestyle.

Glendale is an economic and commercial powerhouse. It has been estimated that Glendale is the third largest financial center in the State. Prominent corporations have made Glendale their headquarters, while financial institutions have selected Glendale as a leading regional banking center in Southern California. The Glendale Galleria is one of Southern California's largest and highest sales tax generating malls, with an abundance of both exclusive and affordable retail shops. The City of Glendale understands the important relationship between the health of the business community and the maintenance of a high quality of life for its residents. For this reason, small businesses in Glendale are encouraged and supported by the City's Business Assistance Service, which provides a plan to promote, assist, retain and attract quality business in Glendale.



Alex Theatre



Downtown Glendale

Glendale is proud of its historical landmarks and architecture.

The City is proud of its history and has received a Certified Local Government Status in historical preservation. Glendale has a number of famous landmarks, and many are included on the List of Historic Resources. The list is continuing to expand as an increasing number of owners gain an appreciation for their historical properties. Some of the most prominent landmarks are the Casa Adobe, Brand Castle (also known as Brand Library), The Masonic Temple, The Rodriguez House and The Derby House. City government buildings include a number of institutional landmarks exemplifying the work of some of the country's greatest modernist architects, such as the Central Library designed by Welton Becket. Some neighborhood residents are now pursuing historic district status to formally recognize these resources.



Brand Library



Casa Adobe

Glendale's management is a "team effort."

Glendale enjoys a Council-Manager form of government, with its five council members elected at-large for four-year terms. The Mayor's position rotates among the members, with a new one selected each April. Elections occur in odd-numbered years. The City Council meets on Tuesday nights and welcomes community input during its Oral Communication segment. The City Manager and City Attorney are appointed by the City Council; the City Clerk and City Treasurer are elected positions. The City is served by 16 separate divisions employing more than 1600 full-time personnel.

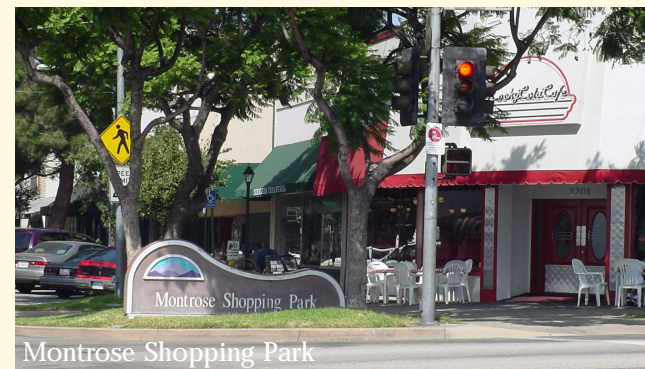


Glendale has its own first-rate municipal utility.

Glendale Water & Power is owned and maintained by the City, ensuring reliability and competitive rates for its electrical power, and high quality water standards which meet or exceed all federal and state health requirements. It operates its own power plant capable of serving the needs of the entire community. Glendale also owns and operates its own Integrated Waste Management division.

Glendale enjoys "full-service" neighborhoods.

Some of Glendale's "hidden treasures," are several small commercial areas sprinkled throughout the City. Walking distance from the neighborhoods they serve, Montrose, Kenneth Village, Adams Square and Spar Heights shopping districts offer quaint sidewalk cafes, unique stores and boutiques and a range of urban services such as dry cleaning, mailing centers, and medical offices. Reminiscent of 1950's small-town America, these shopping villages are popular with residents throughout the City.



Montrose Shopping Park

Glendale is an exciting destination for arts and entertainment.

Glendale's Civic Auditorium is a multi-level meeting and exhibition facility which includes a hall available to rent for both public and private events. Private events include the Modern Times Art-Deco Show, the Antique Mart, the All American Collectors Show, and a variety of trade shows. Glendale is also home to an authentic Japanese Tea House and Garden, the Doctors' House Museum, the Alex Theatre, and A Noise Within Theatre and the Glendale Centre Theatre. The Brand Library & Art Center, which promotes several major art events and gallery shows, is one of the state's most impressive lending libraries of art books and recorded music. Arts and cultural classes are also offered throughout the city, many of which are low-cost or free. Glendale is the host of several exciting community events including Cruise Night, Oktoberfest, Days of the Verdugos and special holiday events.



Glendale is committed to quality education.

The Glendale Unified School District has earned a well-deserved reputation as a leader in educational quality. Glendale has twenty elementary public schools (grades K-6), four middle schools (grades 7-8), and five high schools (grades 9-12), including a magnet high school emphasizing science and technology. Based on the latest state measures, over half of the district's schools are ranked at or near the top of all schools in California. Glendale schools also recognize the importance of youth enrichment through the arts and music, and are very proud of the award winning Hoover High School Jazz Band and the Glendale High School Bell Choir. Many private schools are also available to Glendale residents.

Glendale Community College (GCC) has a college-credit enrollment of about 17,000 students, with approximately 10,000 others reached through adult education programs. GCC offers coursework in nearly 100 degree and certificate programs, and consistently ranks among the top of all two-year colleges academically in California. (A complete list of all schools available to Glendale residents is provided in the back of this booklet.)



Glendale is ideally located.

Centrally located, the city of Glendale offers proximity to many local attractions. The map below lists the true distance in miles, shown in parentheses, from the intersection of Brand Boulevard and Broadway (represented by a circled star) to the attraction.

Note: The attractions shown on the map are intended as a visual representation, do not depict true geographic locations, and are not drawn to scale.

