



a vision study for the new **WASHINGTON BOULEVARD**





Legacy Project: AIA 150

The American Institute of Architects turns 150 years old and gives a gift to the Community in the form of the blueprint for America

Blueprint for America

Through state and local components, AIA architects will initiate, convene, and participate in Blueprint initiatives that utilize community engagement, in a collaborative process, and quality design as keys to improving a community's livability



Mayor R.T. Rybak's Great City Design Teams

Volunteer teams form to help Mayor Rybak with his challenge to reweave the city

background



Mayor's Great City Design Teams: Vision Sketches for a New Washington Boulevard

- The American Institute of Architects (AIA), along with the Minnesota chapter of the American Society of Landscape Architects (MASLA) and the Urban Land Institute (ULI), has volunteered to provide interdisciplinary Great City Design Teams to help Mayor R.T. Rybak with his challenge to reweave the fabric of the city.
- Among several Design Case Studies, the Mayor has specific interests in developing vision plans and sketches for the evolving Washington Boulevard.

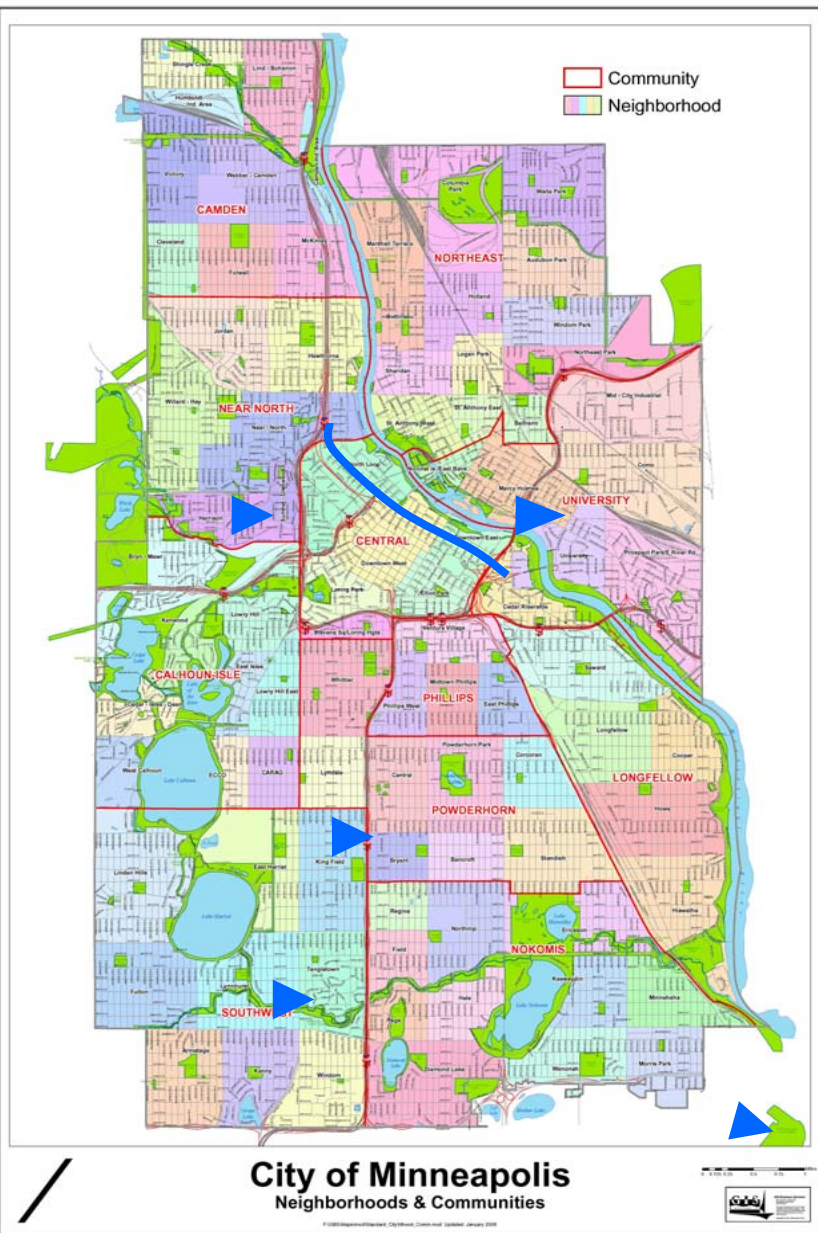
The Washington Boulevard Core Design Team:

- David Graham, AIA, Team Leader – Elness Swenson Graham Architects, Inc.
- Ryan Kronzer, Associate AIA – Rozeboom Miller Architects
- David Frank, ULI – Schafer Richardson
- John Slack, ASLA – Bonestroo
- Lauren Huynh, Associate AIA – Elness Swenson Graham Architects, Inc.
- Jerry Ohm – Elness Swenson Graham Architects, Inc.
- Raymond Dehn, Associate AIA – Elness Swenson Graham Architects, Inc.
- Erin McCleary – Elness Swenson Graham Architects, Inc.
- Alita Bergan, AIGA – Elness Swenson Graham Architects, Inc.

Purpose:

- To create a more pedestrian oriented streetscape that supports a new, vibrant mixed-use, and cultural vitality along the Boulevard.





Washington Boulevard

Nicollet Avenue and 18th Street

Penn Avenue N. and N. Lowry Avenue

Central Avenue NE. and N. Lowry Avenue

46th Street S. and 46th Avenue E.

40th Street and Lyndale Avenue S.

the first six projects

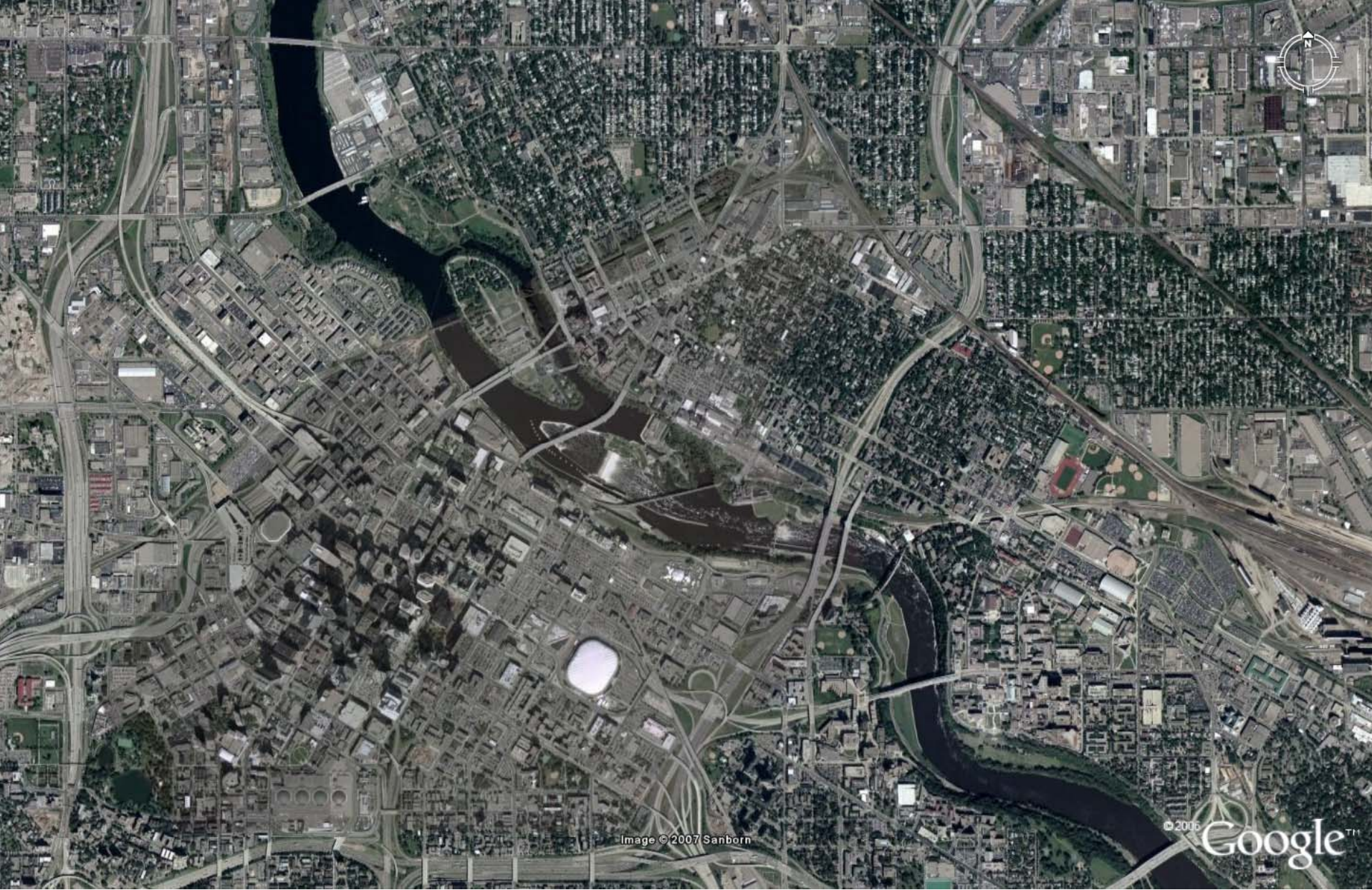


Image © 2007 Sanborn

© 2006 Google™



a vision study for the new **WASHINGTON BOULEVARD**



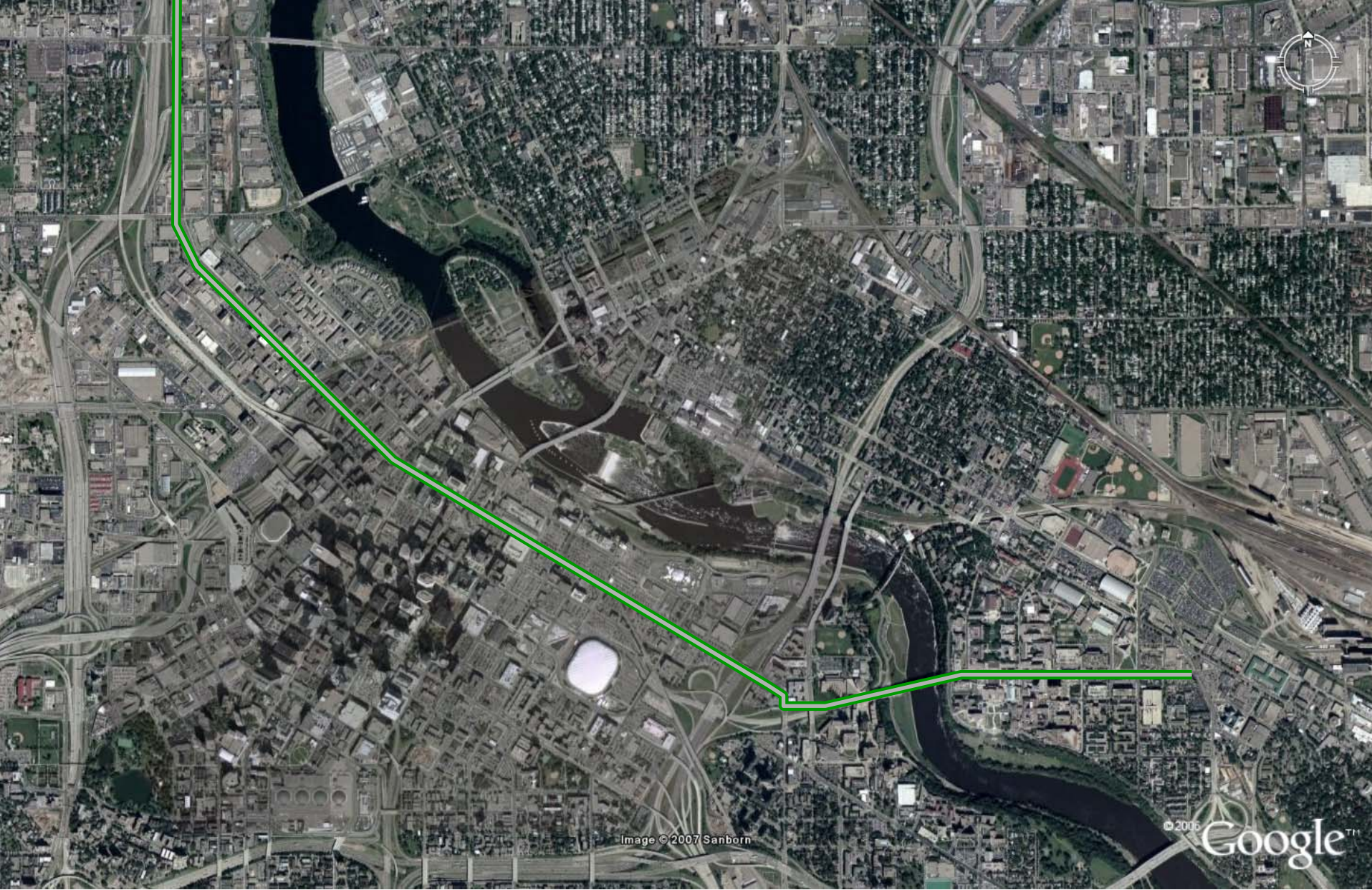


Image © 2007 Sanborn

© 2006 Google™



MAYOR R.T. RYBAK'S
great city design teams
in collaboration with AIA Minneapolis, ULI + MASLA

washington : connections

a vision study for the new **WASHINGTON BOULEVARD**



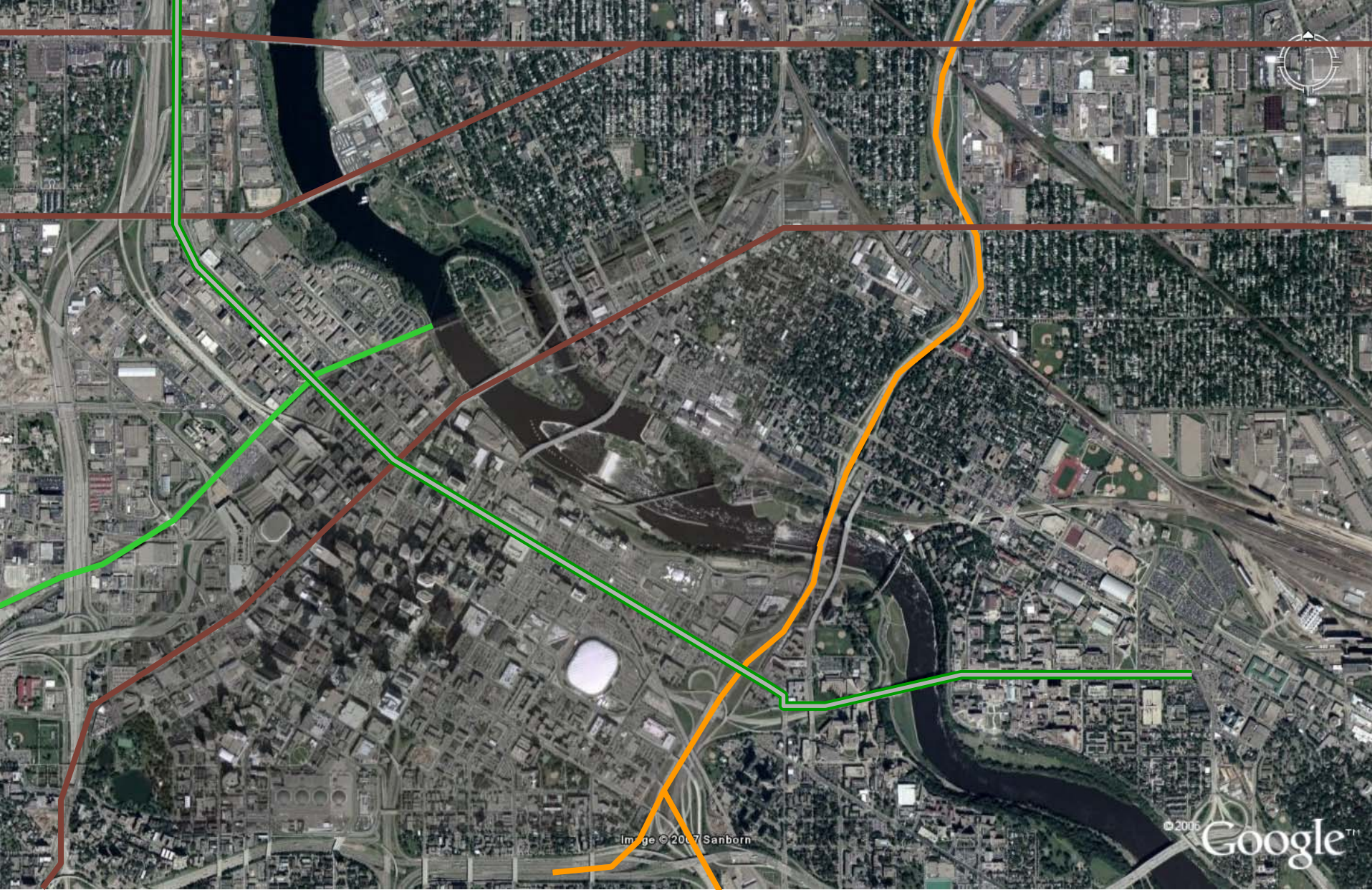


Image © 2007 Sanborn

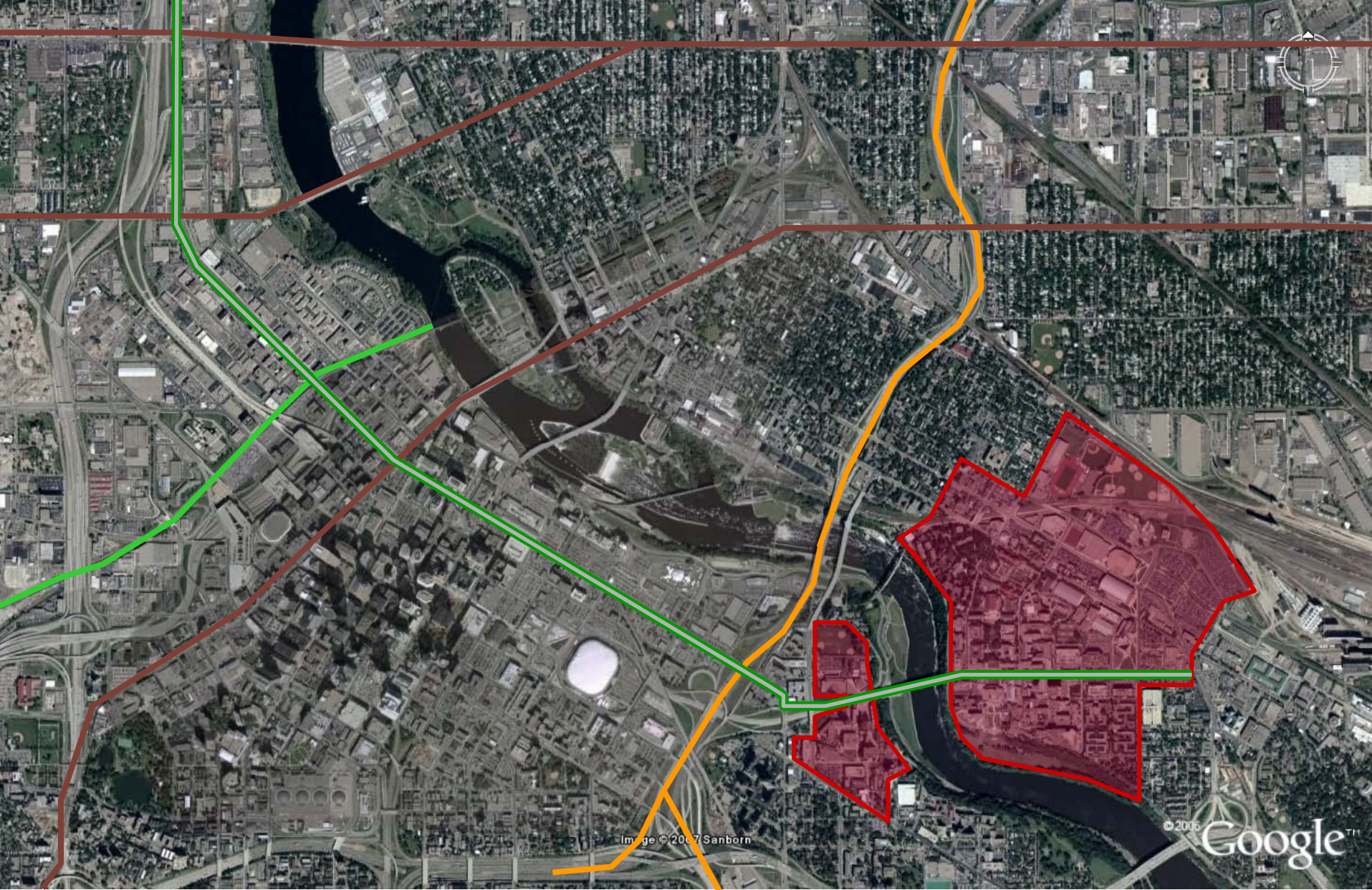
© 2006 Google™

35W/hennepin/cedar lake trail/plymouth/broadway : connections



a vision study for the new **WASHINGTON BOULEVARD**





university of minnesota : connections



MAYOR R.T. RYBAK'S
great city design teams
in collaboration with AIA Minneapolis, ULI + MASLA

a vision study for the new **WASHINGTON BOULEVARD**



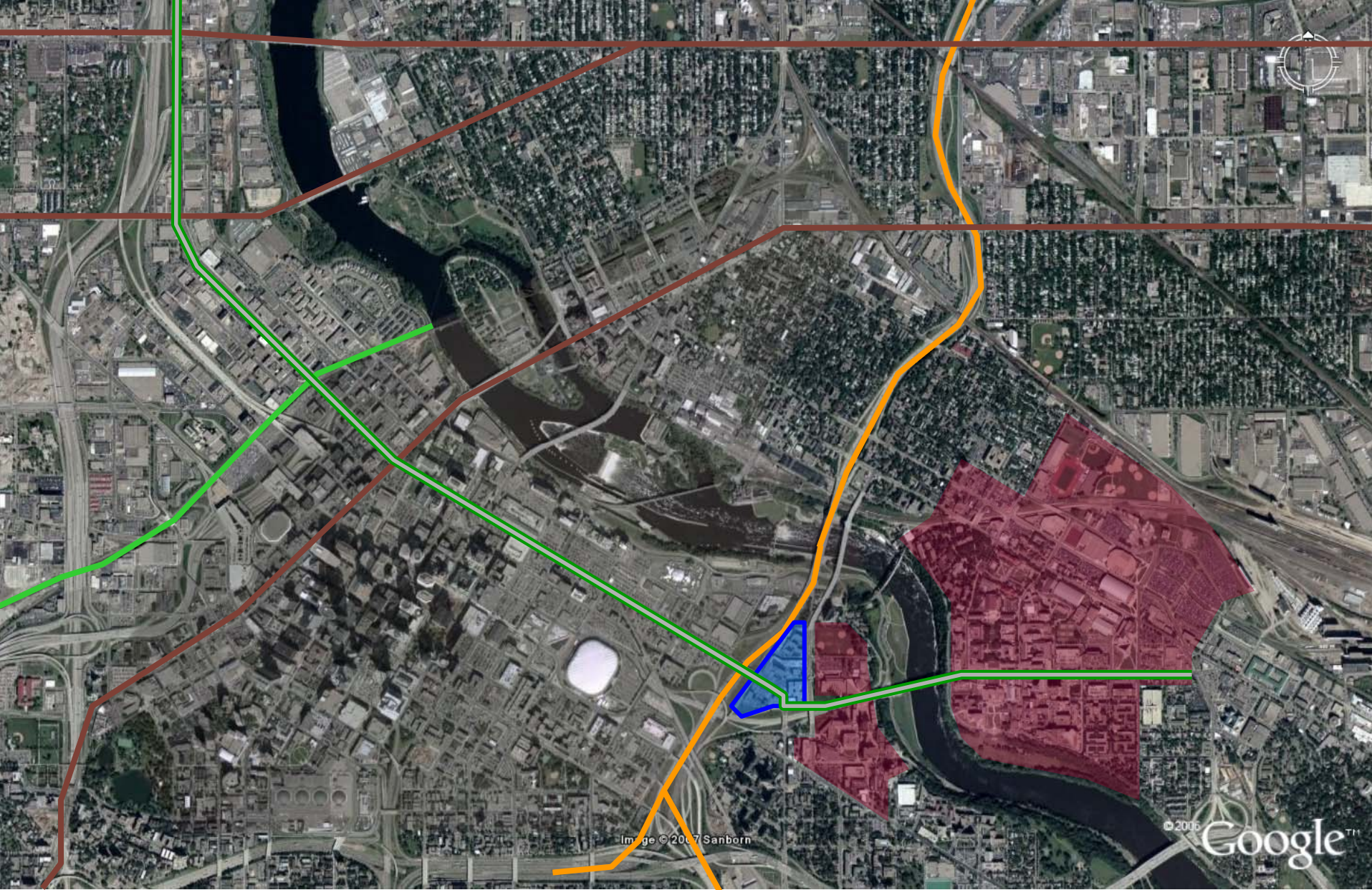


Image © 2007 Sanborn

© 2006 Google™

seven corners : connections

MAYOR R.T. RYBAK'S
great city design teams
in collaboration with AIA Minneapolis, ULI + MASLA

a vision study for the new **WASHINGTON BOULEVARD**



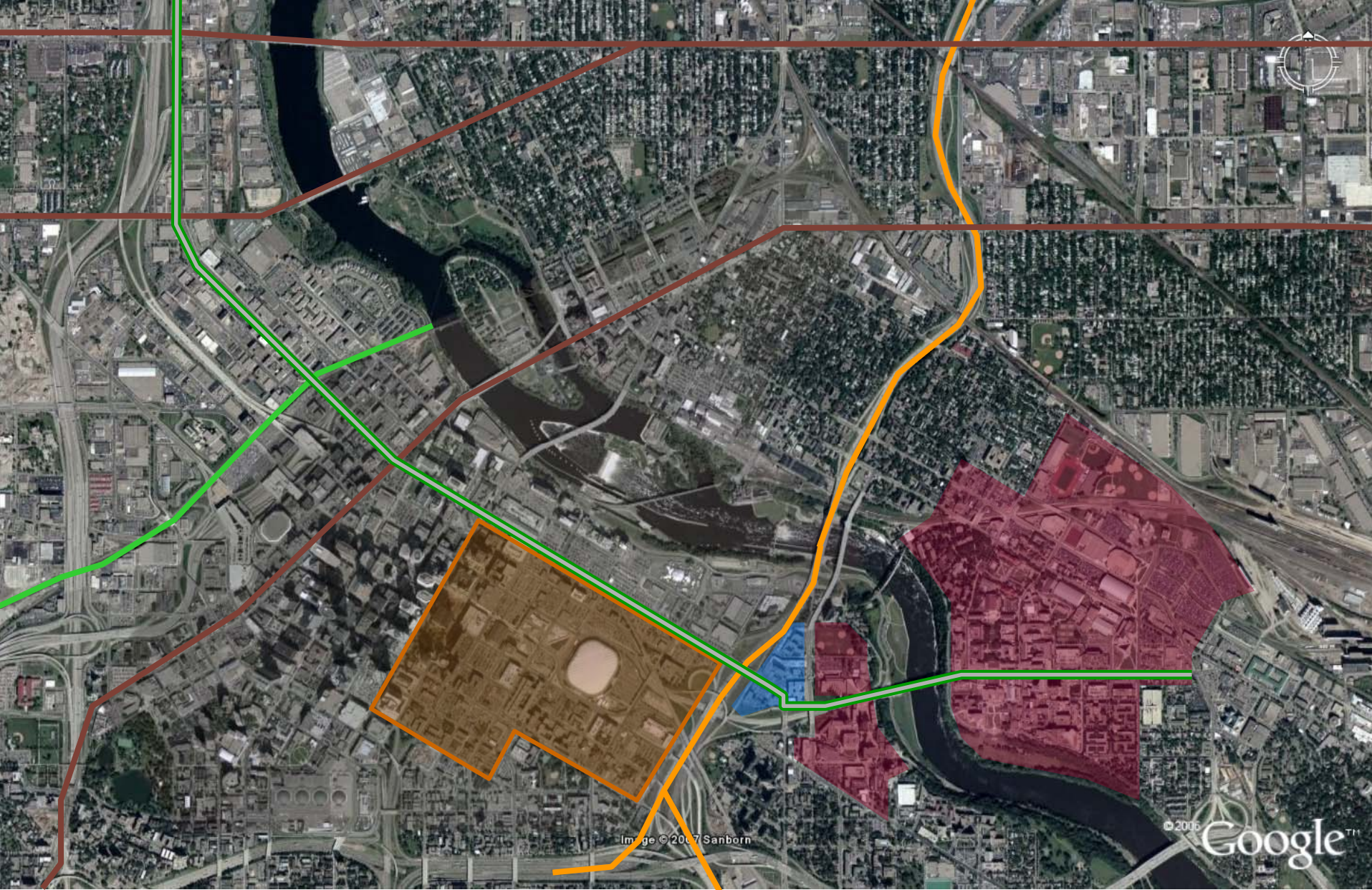


Image © 2007 Sanborn

© 2006 Google™

downtown east : connections

MAYOR R.T. RYBAK'S
great city design teams
in collaboration with AIA Minneapolis, ULI + MASLA

a vision study for the new **WASHINGTON BOULEVARD**



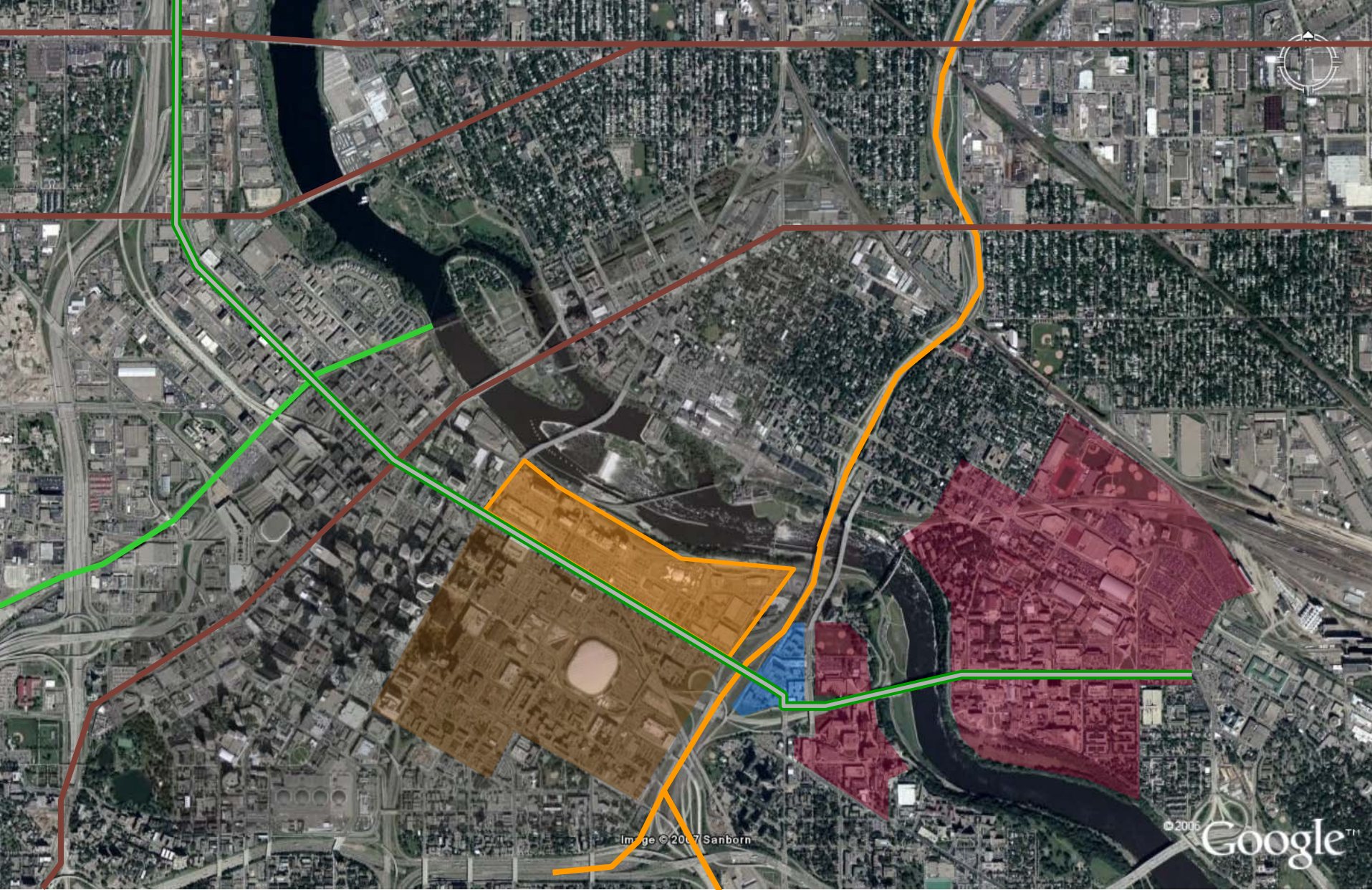


Image © 2007 Sanborn

© 2006 Google™

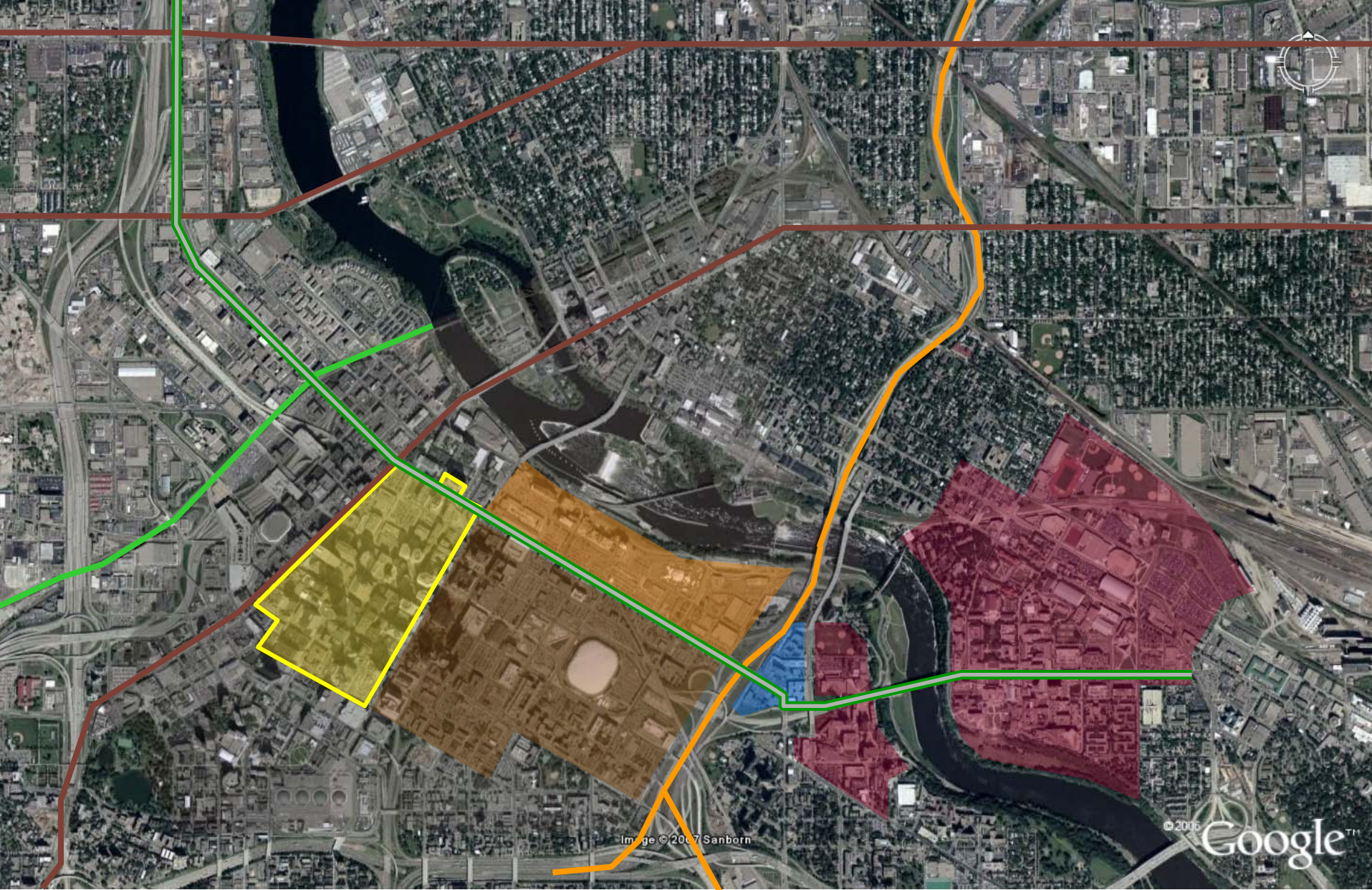
mills district : connections



MAYOR R.T. RYBAK'S
great city design teams
in collaboration with AIA Minneapolis, ULI + MASLA

a vision study for the new **WASHINGTON BOULEVARD**



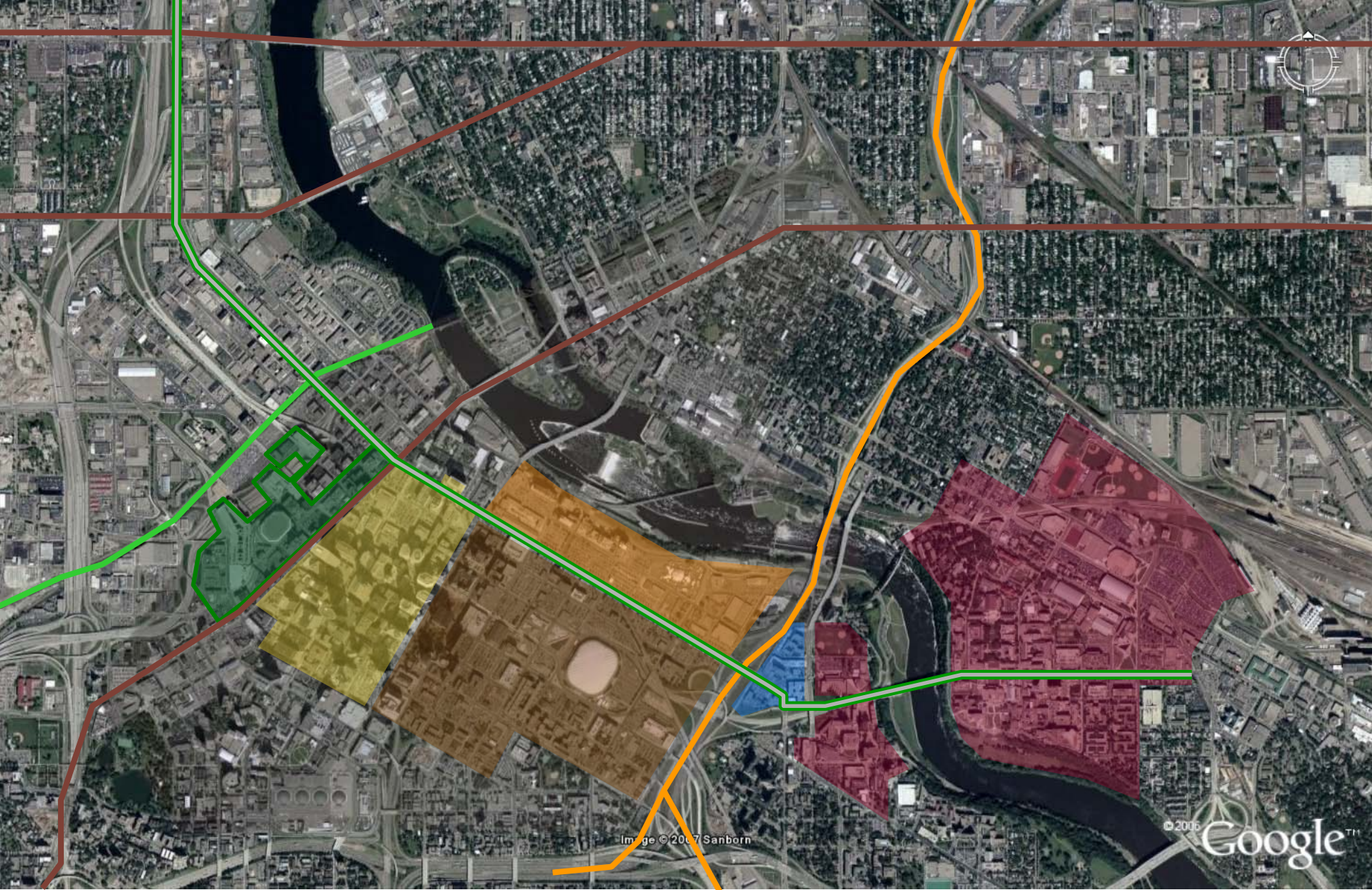


downtown core : connections

MAYOR R.T. RYBAK'S
great city design teams
in collaboration with AIA Minneapolis, ULI + MASLA

a vision study for the new **WASHINGTON BOULEVARD**





theater district : connections

MAYOR R.T. RYBAK'S
great city design teams
in collaboration with AIA Minneapolis, ULI + MASLA

a vision study for the new **WASHINGTON BOULEVARD**



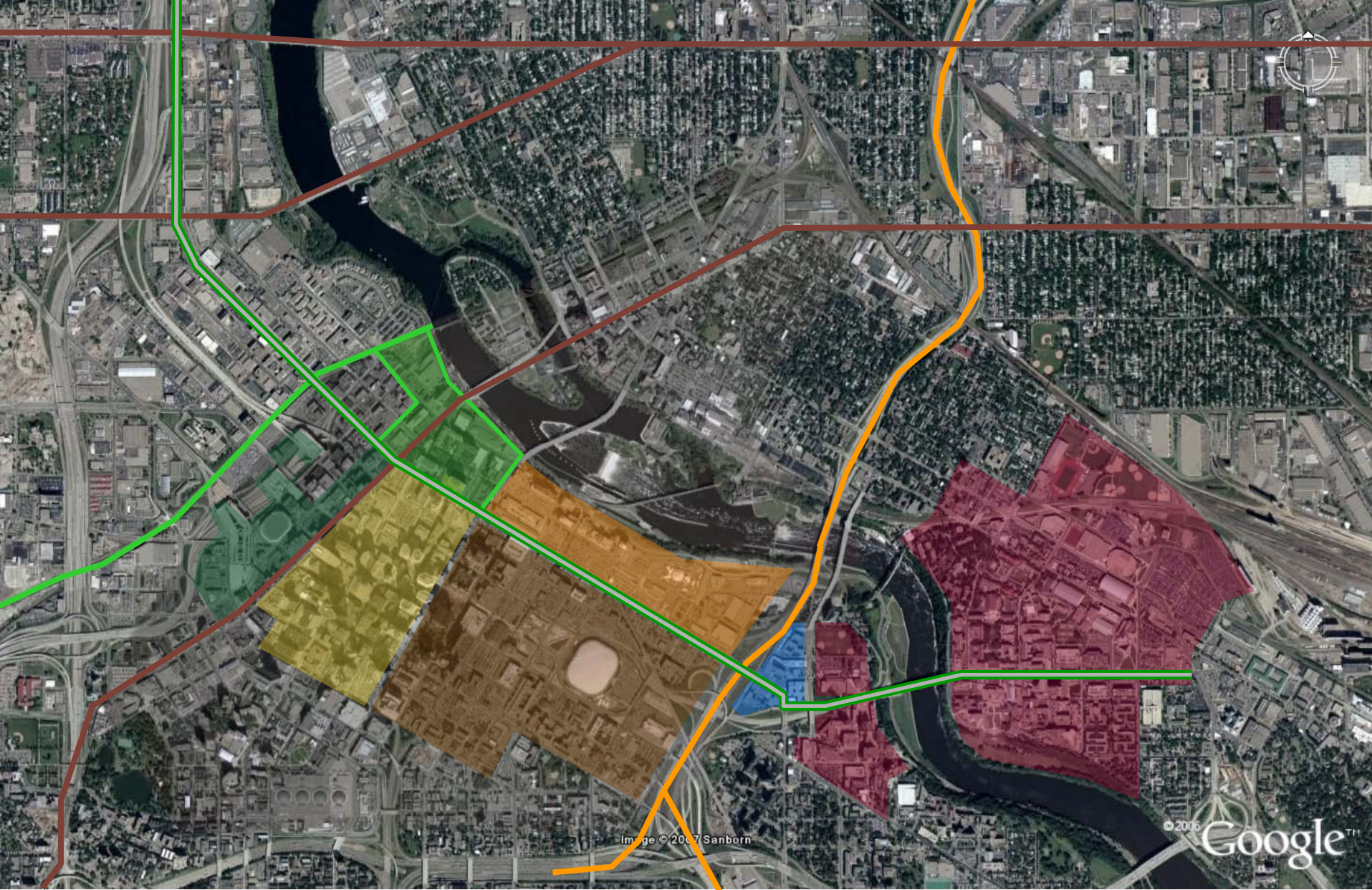


Image © 2007 Sanborn

© 2006 Google™

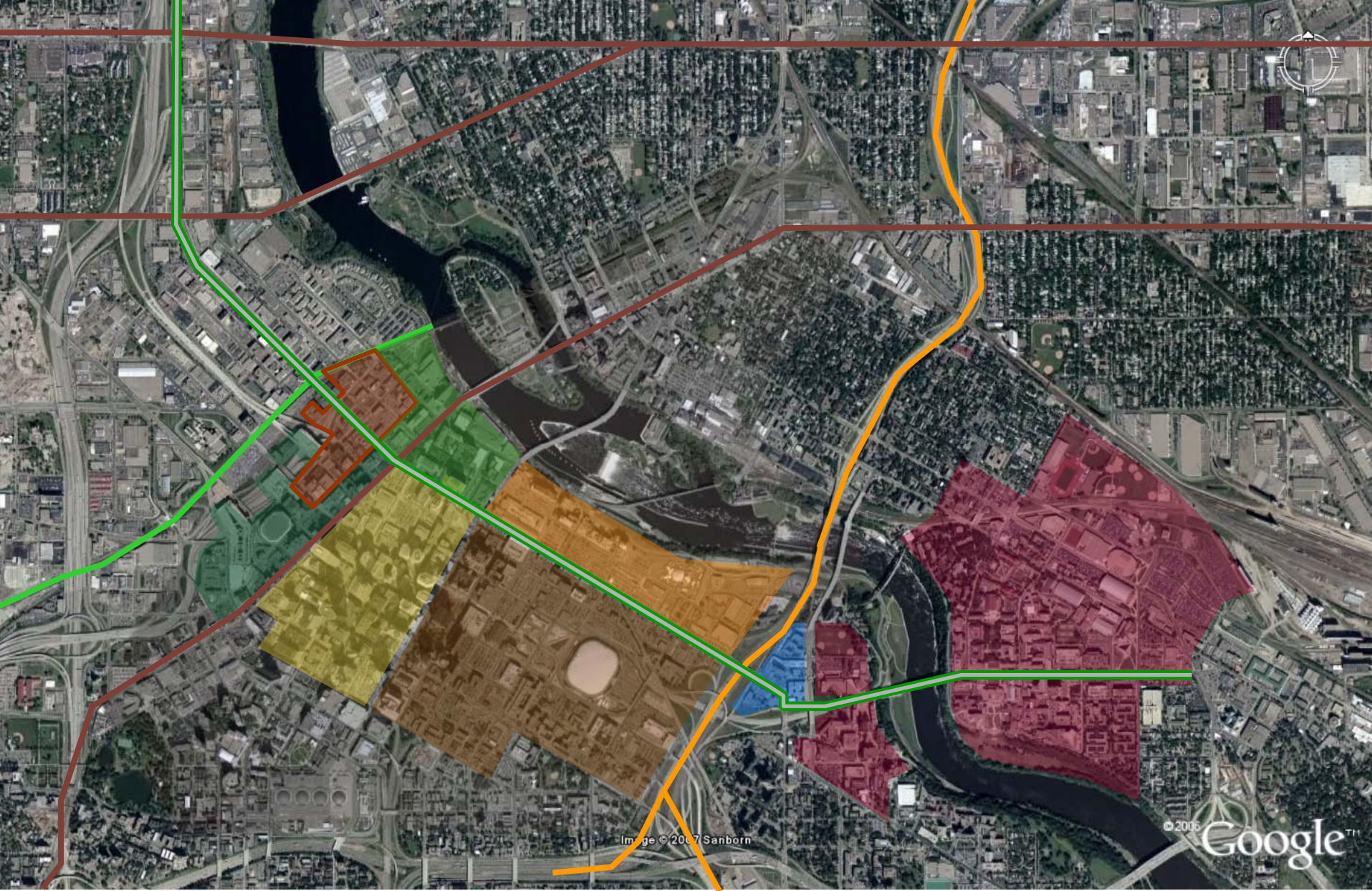
the gateway : connections



MAYOR R.T. RYBAK'S
great city design teams
in collaboration with AIA Minneapolis, ULI + MASLA

a vision study for the new **WASHINGTON BOULEVARD**



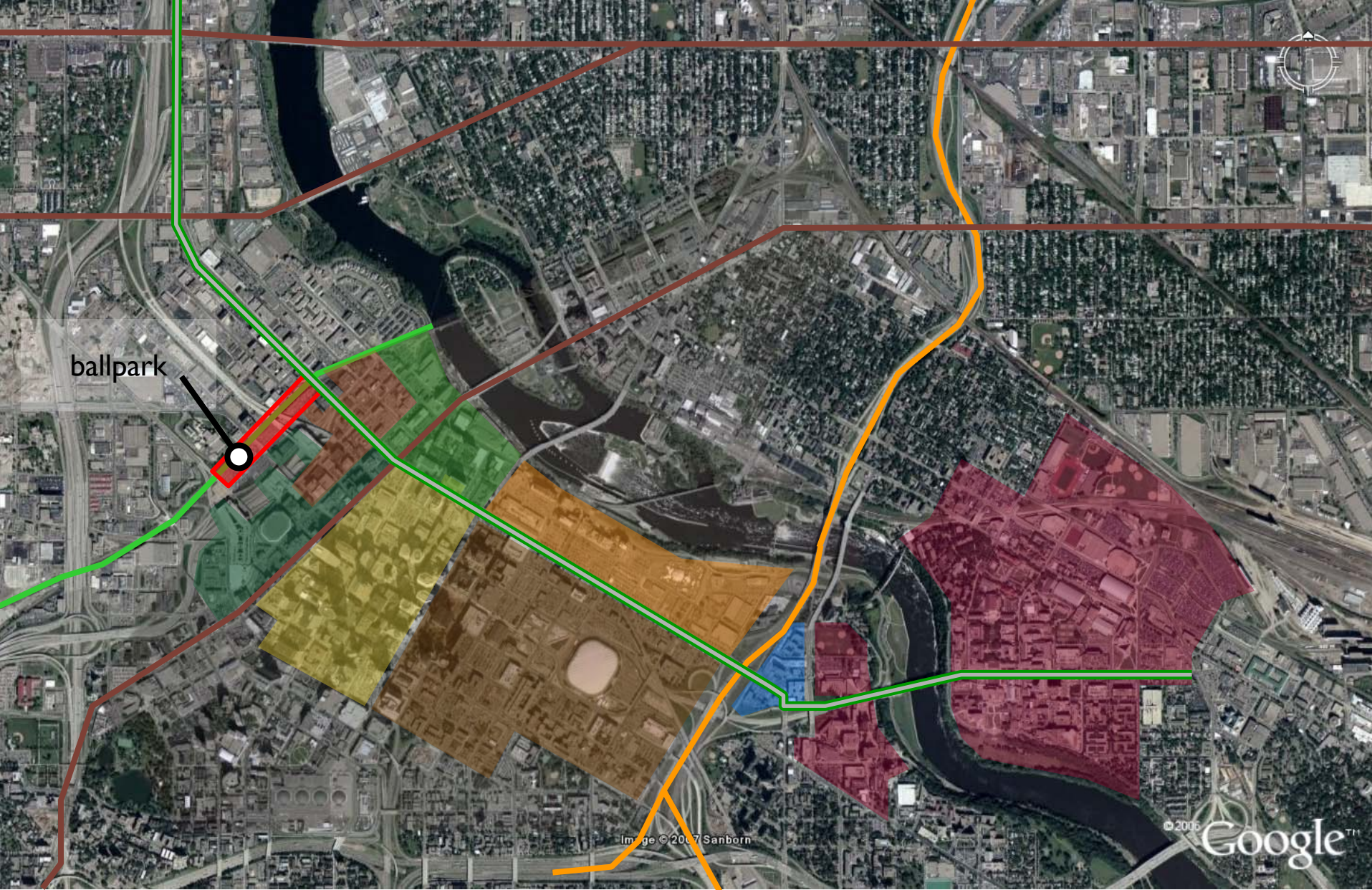


warehouse district : connections

MAYOR R.T. RYBAK'S
great city design teams
in collaboration with AIA Minneapolis, ULI + MASLA

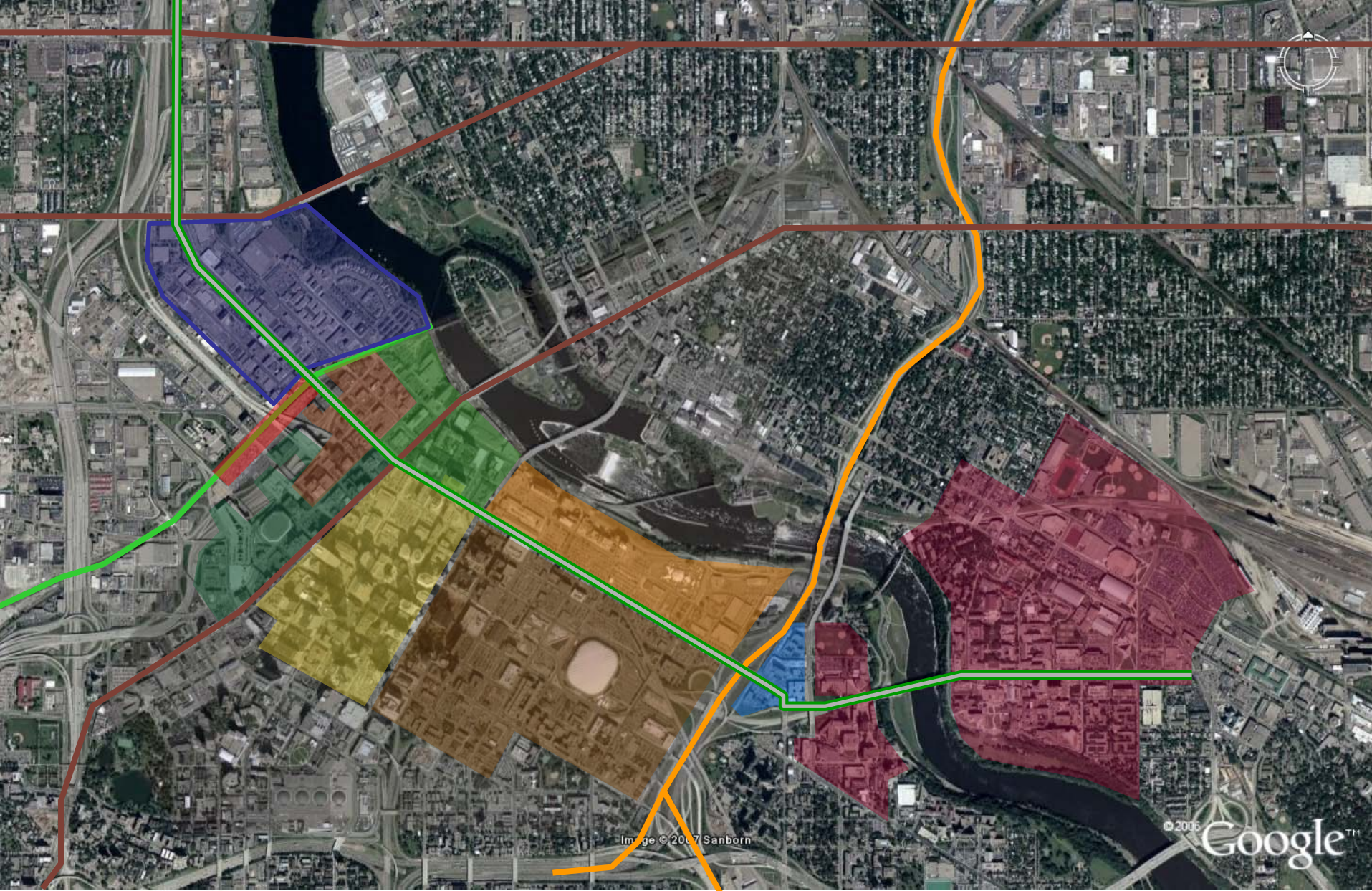
a vision study for the new **WASHINGTON BOULEVARD**





ballpark

ballpark redevelopment area : connections



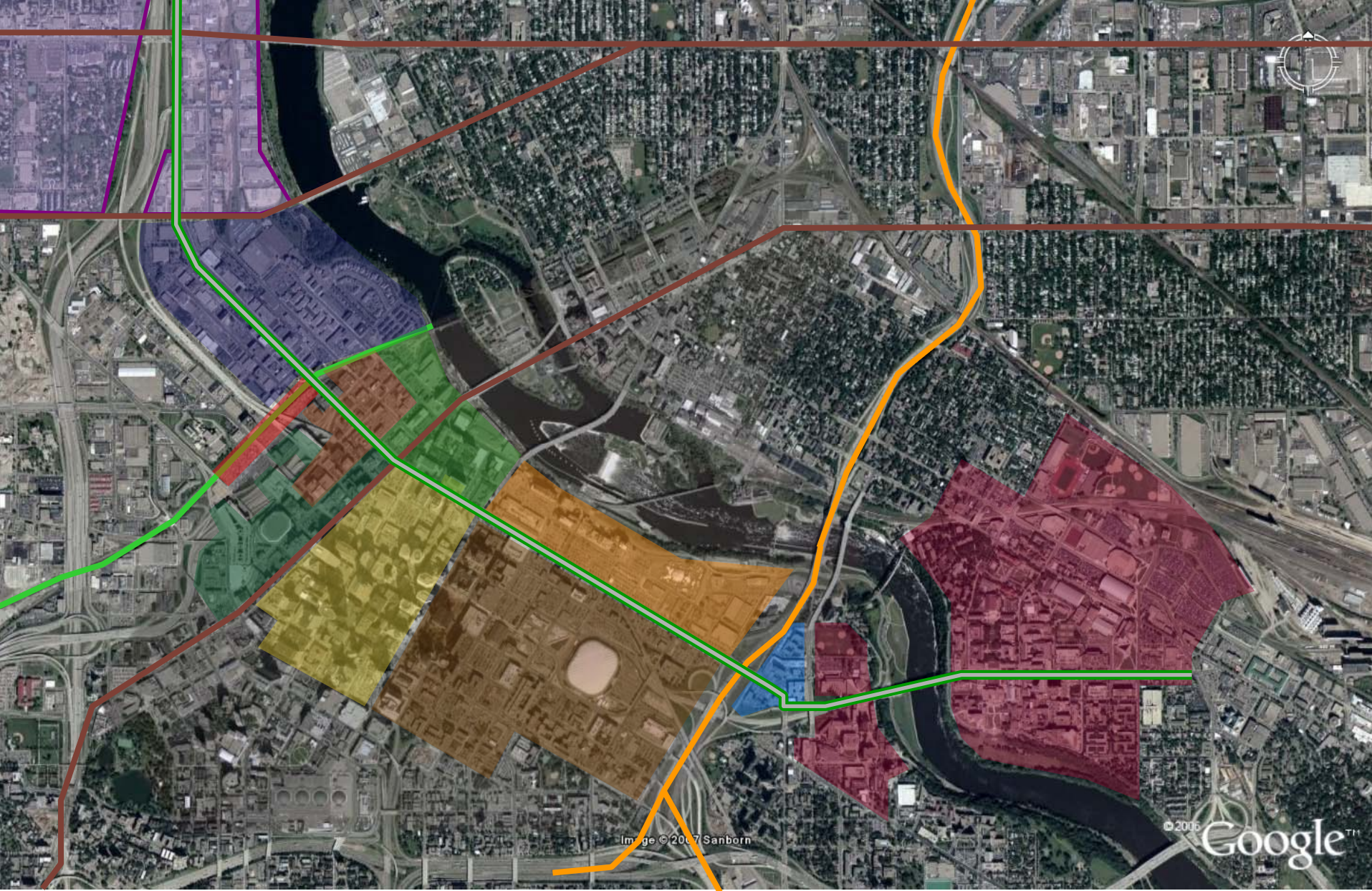
north loop : connections



MAYOR R.T. RYBAK'S
great city design teams
in collaboration with AIA Minneapolis, ULI + MASLA

a vision study for the new **WASHINGTON BOULEVARD**





near north : connections



a vision study for the new **WASHINGTON BOULEVARD**





washington avenue in history



washington avenue today: challenges

a vision study for the new **WASHINGTON BOULEVARD**





washington avenue today: successes



boulevard street



what is a boulevard?

Key Elements from Stakeholders Workshops

- continuous active, pedestrian oriented uses along sidewalk for length of boulevard
- continuous high quality architectural streetwalls through infill development on empty sites along boulevard
- wider sidewalks where possible with higher quality pedestrian friendly pavement
- continuous patterns of high quality street trees and plantings along sidewalk and in medians
- continuous quality system of street lighting
- quality way-finding and neighborhood signage
- public street art integrated into streetscape
- streetscape pedestrian amenities
- automotive traffic calming and on-street off peak parking
- introduction of streetcar transit





continuous active, pedestrian oriented uses along sidewalk for length of boulevard

key elements of a new vision for washington boulevard

continuous high quality architectural streetwalls through
infill development on empty sites along boulevard



key elements of a new vision for washington boulevard





wider sidewalks where possible with higher quality pedestrian friendly pavement



key elements of a new vision for washington boulevard



continuous patterns of high quality street trees and plantings along sidewalk and in medians

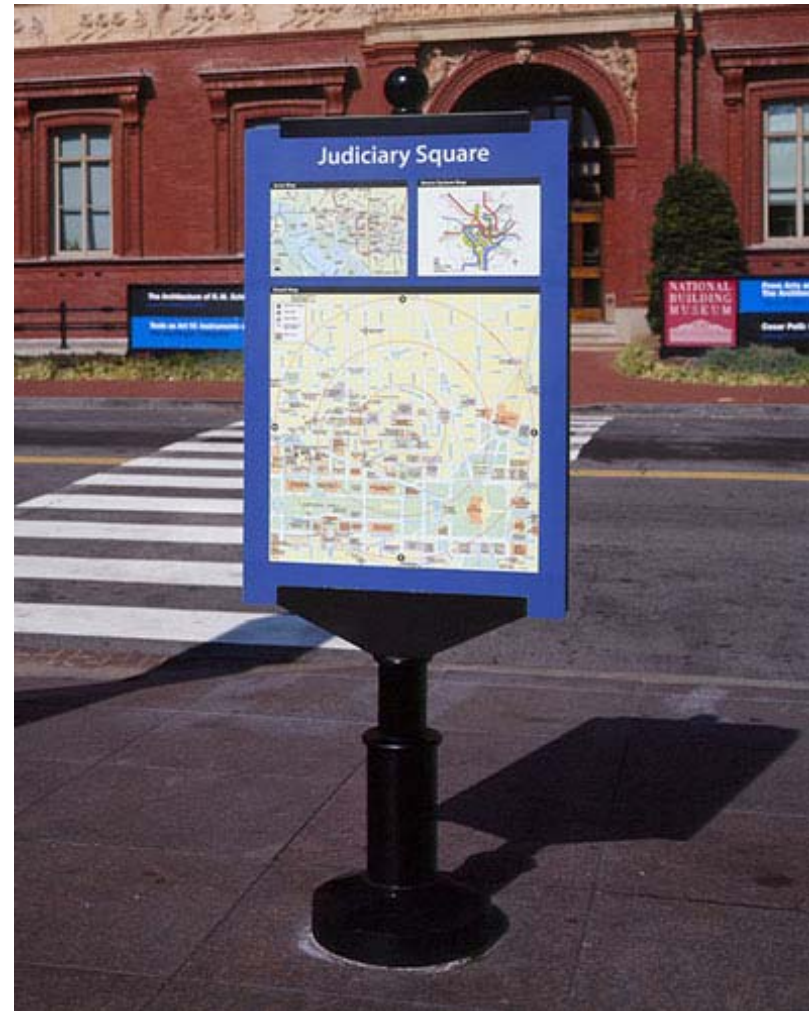
key elements of a new vision for washington boulevard



continuous quality system of street lighting



key elements of a new vision for washington boulevard



quality way-finding and neighborhood signage

key elements of a new vision for washington boulevard



public street art
Integrated into
streetscape

key elements of a new vision for washington boulevard

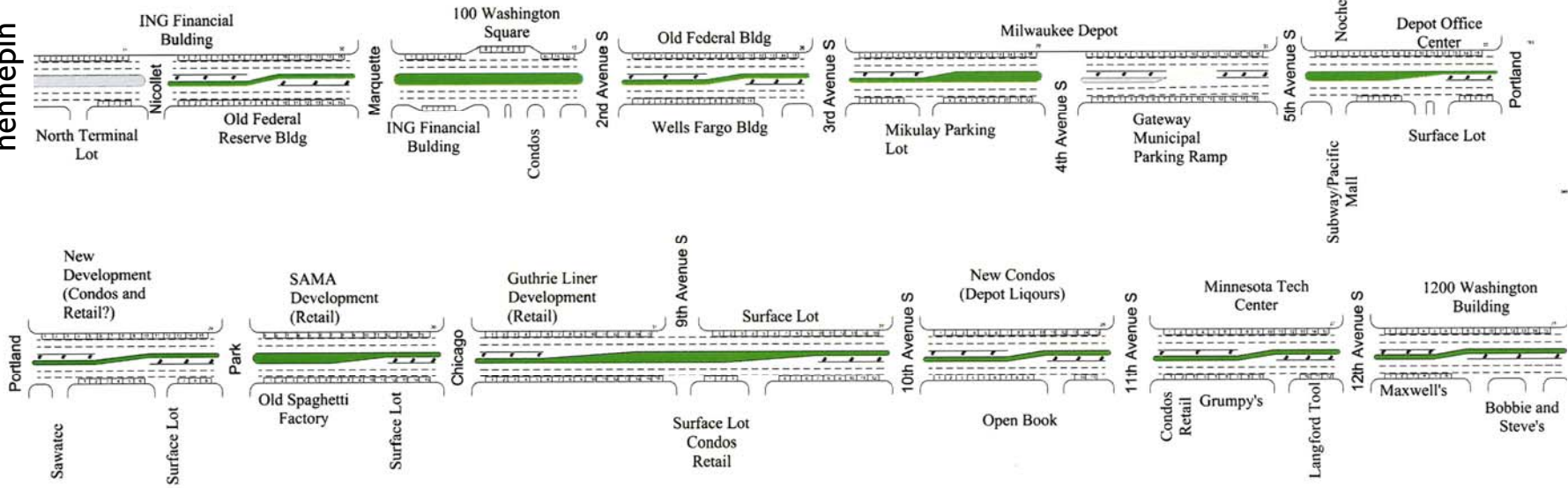


streetscape pedestrian amenities



key elements of a new vision for washington boulevard

hennepin



13 Ave. S.



automotive traffic calming
and on-street
off peak parking

key elements of a new vision for washington boulevard



a vision study for the new **WASHINGTON BOULEVARD**





introduction of streetcar transit



key elements of a new vision for washington boulevard



a vision study for the new **WASHINGTON BOULEVARD**





new and existing streetscape improved opportunities

a vision study for the new **WASHINGTON BOULEVARD**

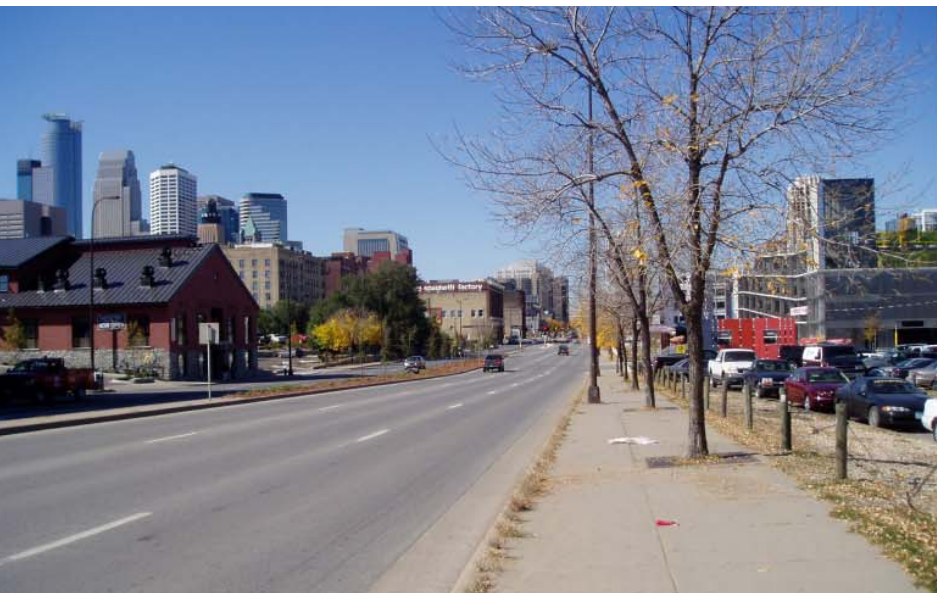




washington boulevard gateway streetscape at 35W

a vision study for the new **WASHINGTON BOULEVARD**





new infill *aloft* hotel/mixed use and streetscape
between 9th ave. S. & 10th ave. S.



a vision study for the new **WASHINGTON BOULEVARD**





new Revue infill residential/mixed-use and streetscape between Chicago Ave. & 9th Ave. S.

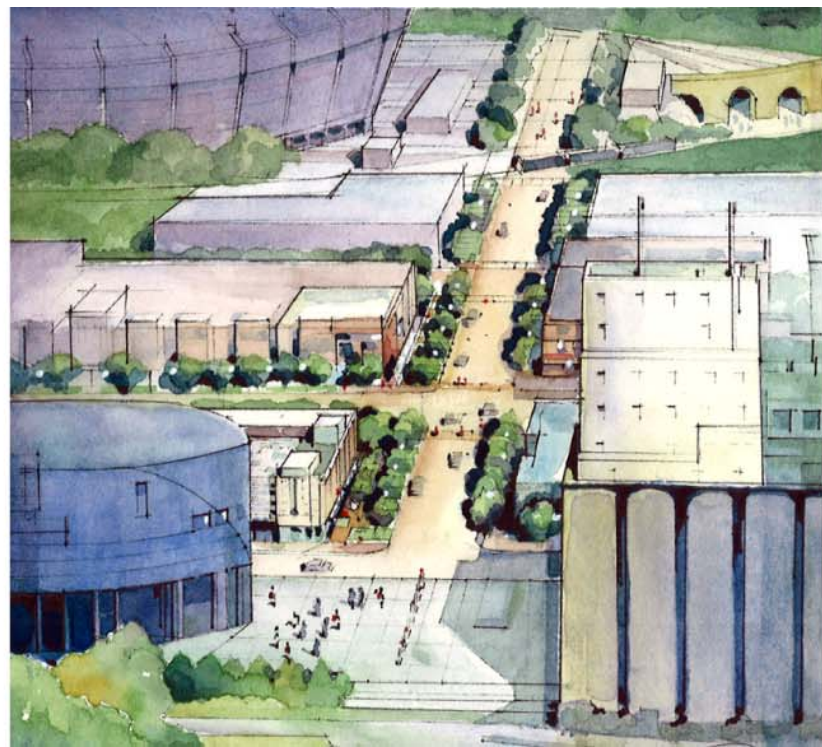
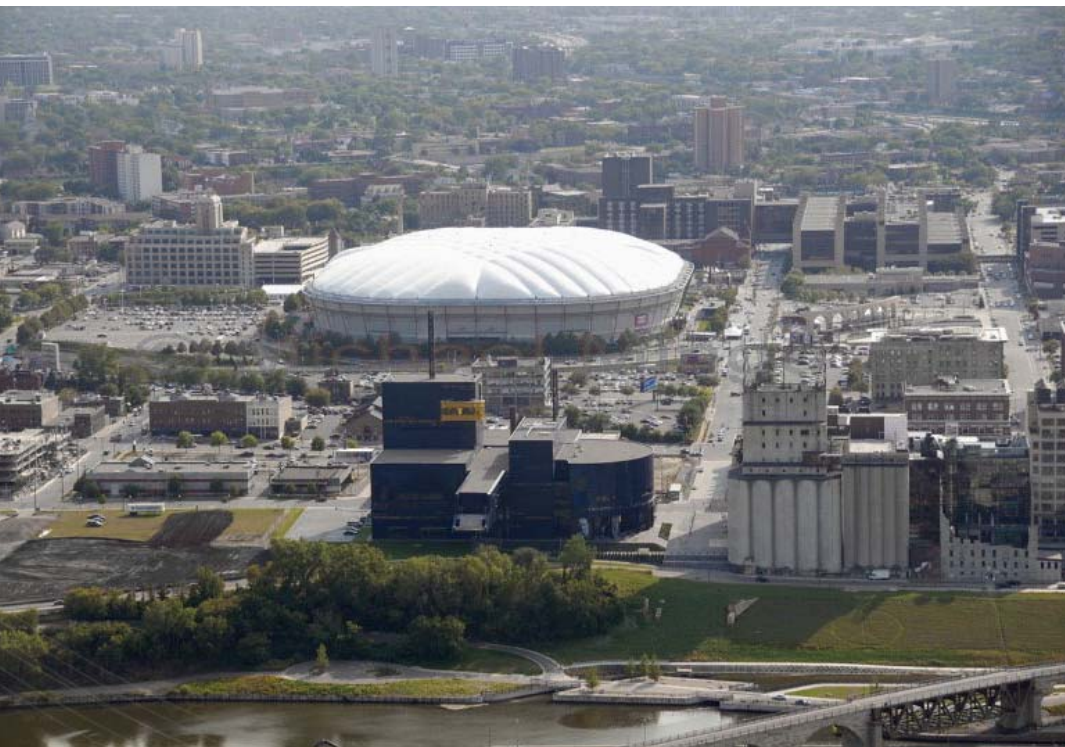


new Revue infill residential/mixed use and chicago ave. streetscape park



a vision study for the new **WASHINGTON BOULEVARD**





washington boulevard & chicago avenue streetscape connection from guthrie river plaza across washington boulevard to LRT

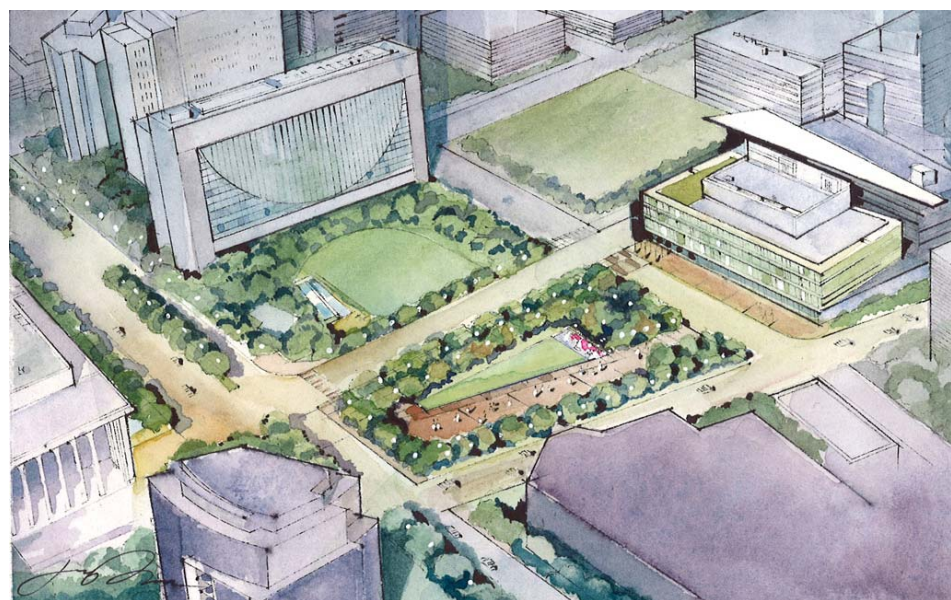


new infill hotel/mixed use and streetscape at portland ave.



a vision study for the new **WASHINGTON BOULEVARD**





potential new park near minneapolis central library

a vision study for the new **WASHINGTON BOULEVARD**





on-going adaptive mixed-use and streetscape improvements in north loop







washington boulevard west broadway gateway:
gateway view looking north at west broadway bridge over I-94



- **Make it happen: David Frank**
 - North Loop Neighborhood's Streetscape
 - St. Anthony Falls Signage
 - Walking Minneapolis
 - Comp Plan
 - Access Minneapolis
 - Cedar Lake Trail
 - North Loop Village/Dock Street
 - Hennepin to 5th Avenue - County redo
 - All developments along area with current projects
 - Downtown East/Metrodome/Vikings
 - Downtown Park (Nicollet Hotel block)
- **Implementation committee & wrap up**
 - Mayor R.T. Rybak

next steps



north loop neighborhood



a vision study for the new **WASHINGTON BOULEVARD**





st. anthony falls signage



st. anthony falls signage



st. anthony falls signage



Walking Minneapolis

Life connected with Style

walking minneapolis



a vision study for the new **WASHINGTON BOULEVARD**





Key Issues

- improve physical space
- improve operations
- improve image

MPLS PLAN

The Minneapolis Plan for Sustainable Growth

2007—The Minneapolis Plan for Sustainable Growth

- Three over-arching themes
 - Urban design
 - Sustainability
 - Heritage Preservation



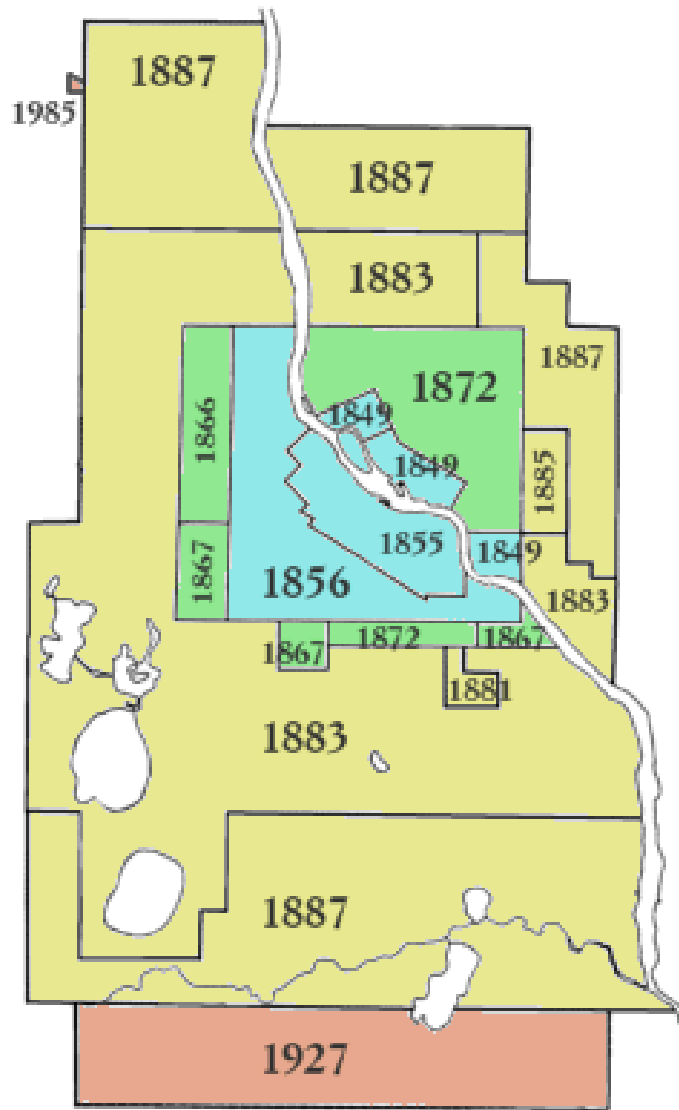
minneapolis comp plan



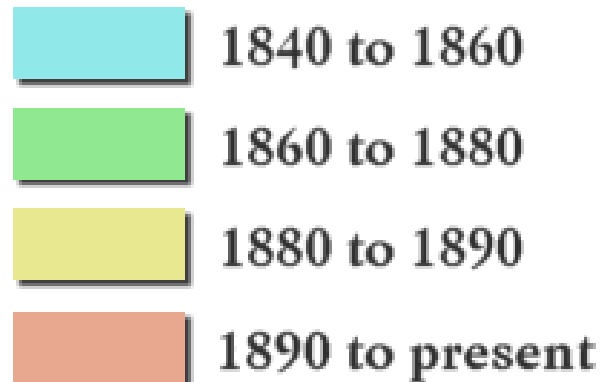
a vision study for the new **WASHINGTON BOULEVARD**



Minneapolis: Always Growing



Progressive Growth of Minneapolis



Based on "Official City Plan of the City of Minneapolis, Historical and Geographic Background, vol. 1" Minneapolis Collection, HT 168.M6M52

minneapolis comp plan

Downtown Action Plan

Ten-Year Transportation Action Plan



A C C E S S MINNEAPOLIS

access minneapolis plan



a vision study for the new **WASHINGTON BOULEVARD**



Pedestrian Action Items

- P-1** Complete improvements to Loring Greenway and linkage to Nicollet Mall
- P-2** Design and Construct 13th Street plaza between Nicollet Mall and Convention Center
- P-3** Provide a linkage between West River Parkway and the Cedar Lake Trail

- P-4** Design and construct North Loop pedestrian connection(s) between 2nd St N and Washington Avenue for better transit connections

- P-5** Provide an improved pedestrian connection between Elliott Park and downtown

- P-6** Provide an improved pedestrian connection between Cedar Riverside and downtown

- P-8** Improve pedestrian crossings at freeway entrance and exit ramps

Legend

- Hiawatha Corridor Light Rail & Stations (Existing)
- Hiawatha Corridor Light Rail & Stations (Future)
- Central/SW Corridor Light Rail & Stations (Future)
- Northstar Commuter Light Rail & Stations (Future)
- Building Footprints
- Parcels
- Water
- Park, Recreational/Preserve; Cemetery
- Downtown Core
- Primary Pedestrian Corridors

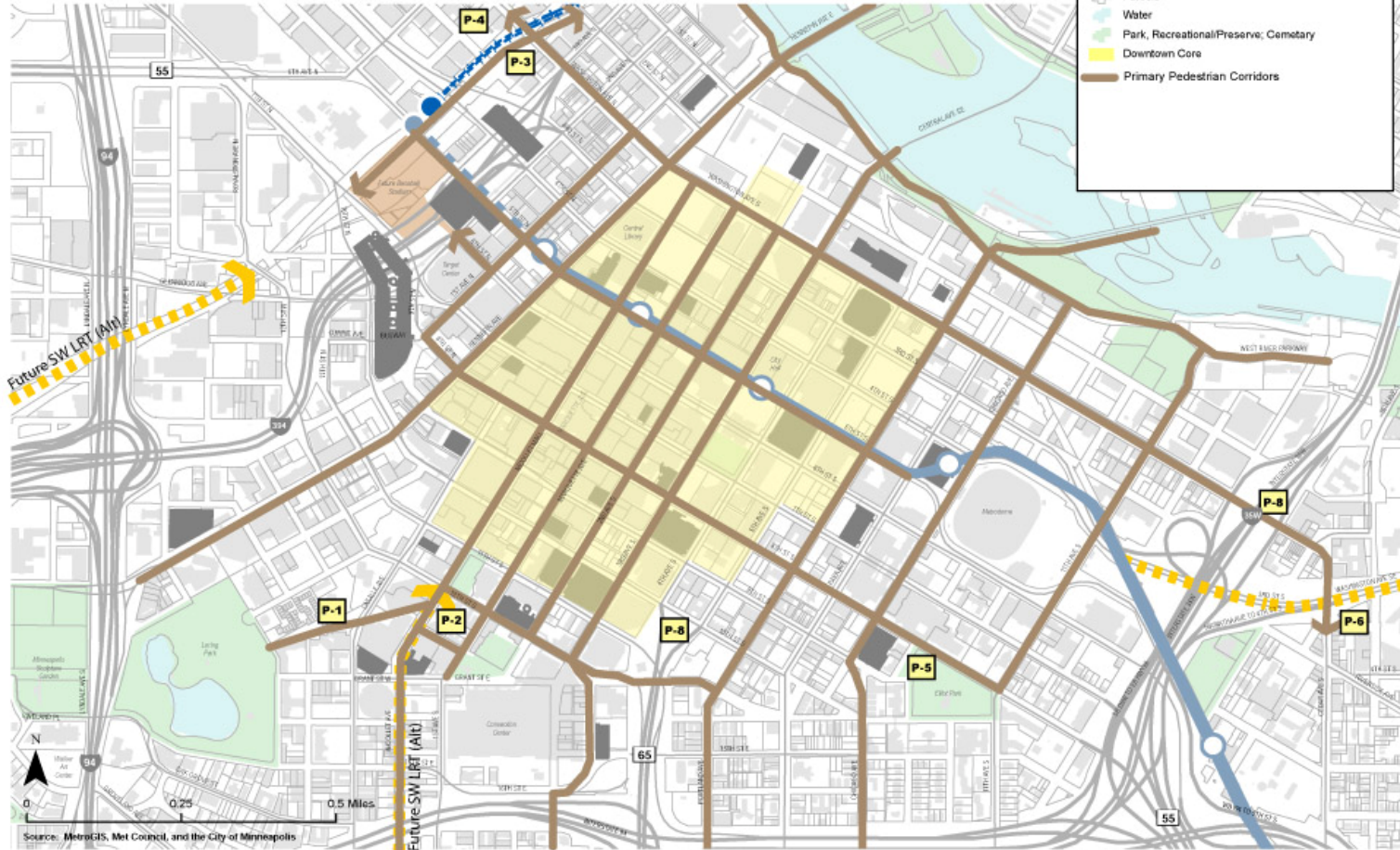


Figure 5: Priority Pedestrian Corridors

Bicycle Action Items

- B-1** Install bike lanes per plan
 a Marquette Avenue South (replace)
 b 2nd Avenue South (replace)
 c Hennepin Avenue (replace)
 d 3rd Street South

- B-3** Extend Hennepin Avenue bike lanes to East Hennepin and Loring Park

- B-4** Complete connection to Hiawatha bikeway and add bike lane on 3rd Street

- B-5** Complete 2nd Street North connection to North Loop (may require easement)

- B-6** Restripe bike lanes on 10th and 11th Streets to standard width

- B-7** Extend bike lane along 15th Street to connect Oak Grove, Loring Park and Elliot Park

- B-2** Construct link between West River Parkway and Cedar Lake Trail

Legend

- Hiawatha Corridor Light Rail & Stations (Existing)
- Hiawatha Corridor Light Rail & Stations (Future)
- Central/SW Corridor Light Rail & Stations (Future)
- Northstar Commuter Rail & Stations (Future)
- Building Footprints
- Parcels
- Water
- Park, Recreational/Preserve; Cemetary
- Downtown Core
- On-street Bicycle Lane
- Off-street Multi-use Path

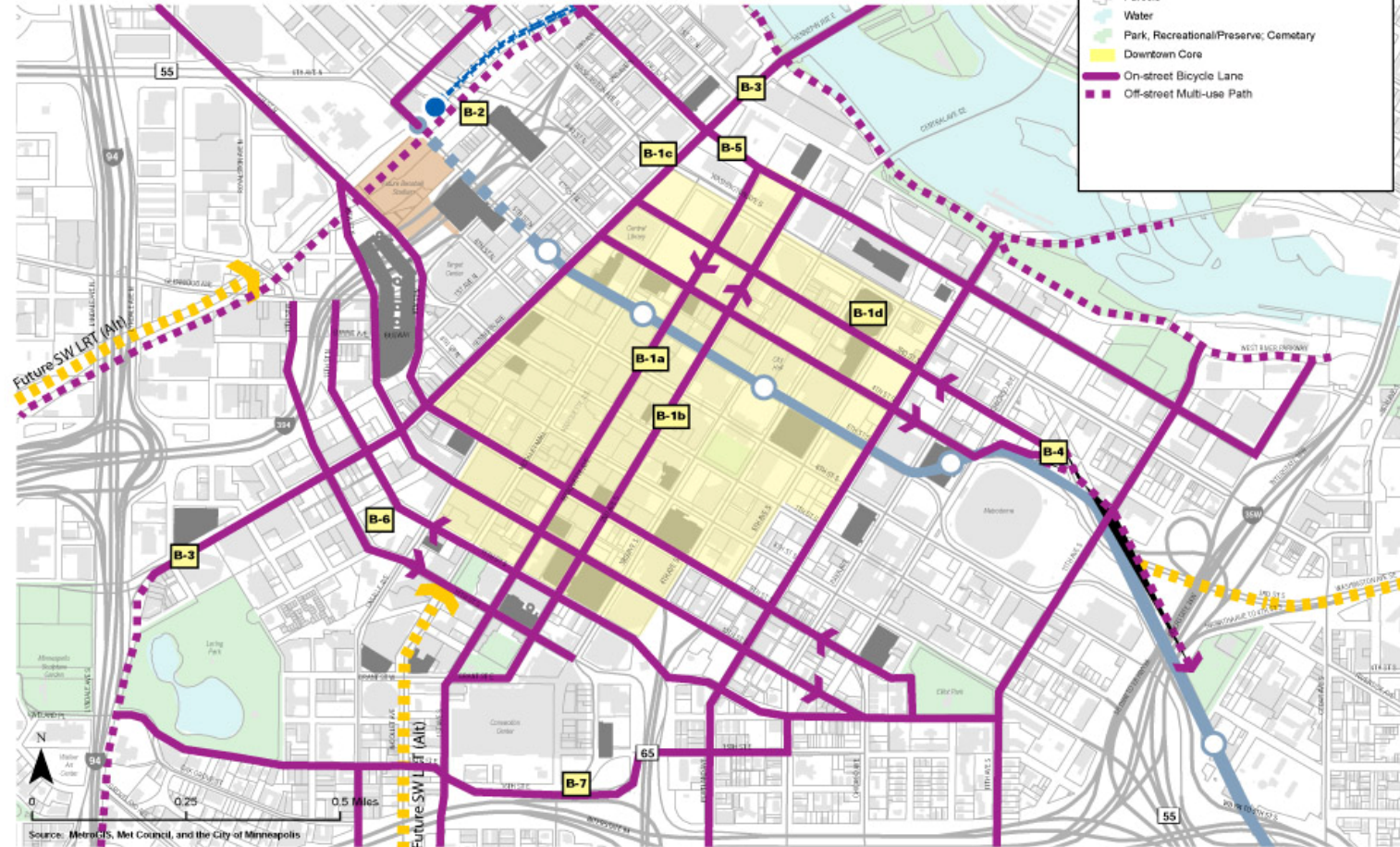
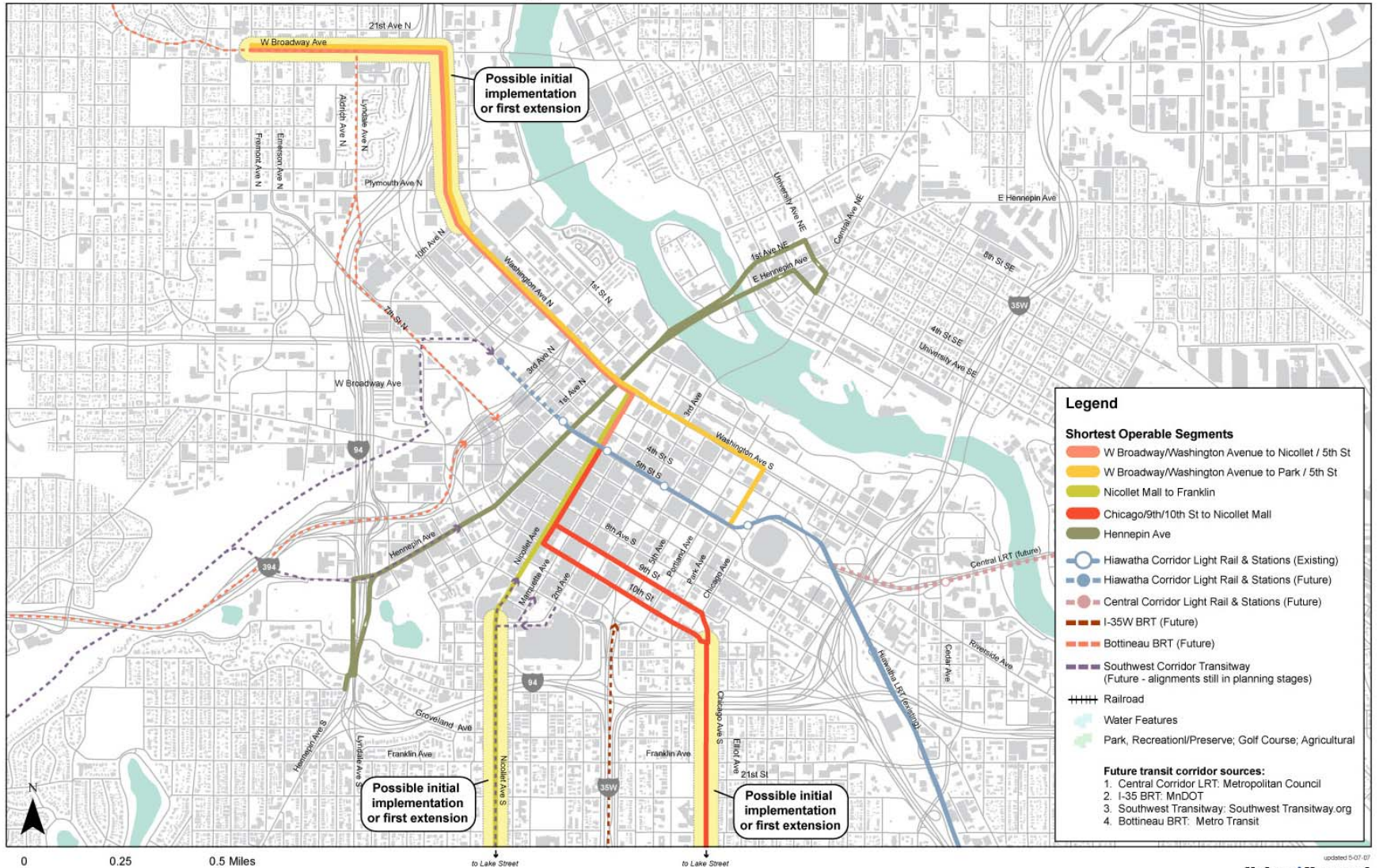


Figure 7: Bicycle Network

Figure ES-2 Shortest Operable Streetcar Segments



Legend

Shortest Operable Segments

- Orange line: W Broadway/Washington Avenue to Nicollet / 5th St
- Yellow line: W Broadway/Washington Avenue to Park / 5th St
- Light Green line: Nicollet Mall to Franklin
- Red line: Chicago/9th/10th St to Nicollet Mall
- Dark Green line: Hennepin Ave

Transit Modes

- Blue circle with line: Hiawatha Corridor Light Rail & Stations (Existing)
- Blue square with line: Hiawatha Corridor Light Rail & Stations (Future)
- Red circle with line: Central Corridor Light Rail & Stations (Future)
- Orange dashed line: I-35W BRT (Future)
- Red dashed line: Bottineau BRT (Future)
- Dark blue dashed line: Southwest Corridor Transitway (Future - alignments still in planning stages)
- Black dashed line: Railroad
- Light blue wavy line: Water Features
- Light green wavy line: Park, Recreation/Preserve, Golf Course, Agricultural

Future transit corridor sources:

1. Central Corridor LRT: Metropolitan Council
2. I-35 BRT: MNDOT
3. Southwest Transitway: Southwest Transitway.org
4. Bottineau BRT: Metro Transit

updated 5-07-07

Nelson|Nygaard
consulting associates



access minneapolis plan

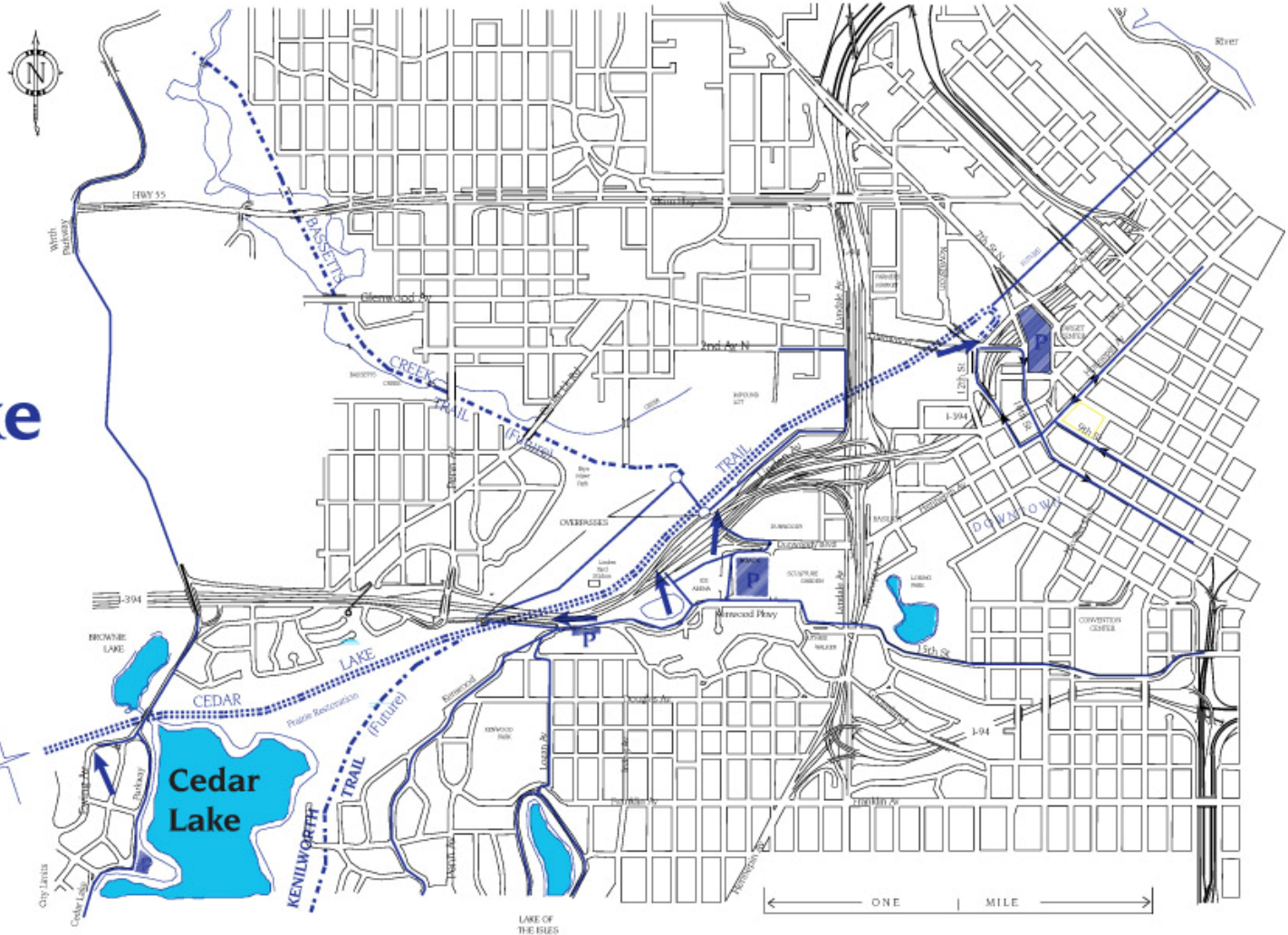
a vision study for the new WASHINGTON BOULEVARD



KEY

-  ACCESS
-  CONNECTING ROUTES
-  PARKING AREAS

Cedar Lake Trail



West End (St. Louis Park)



City of Minneapolis
 Department of Public Works
 Transportation & Parking Services
 612-673-2411
 July, 1999

cedar lake trail





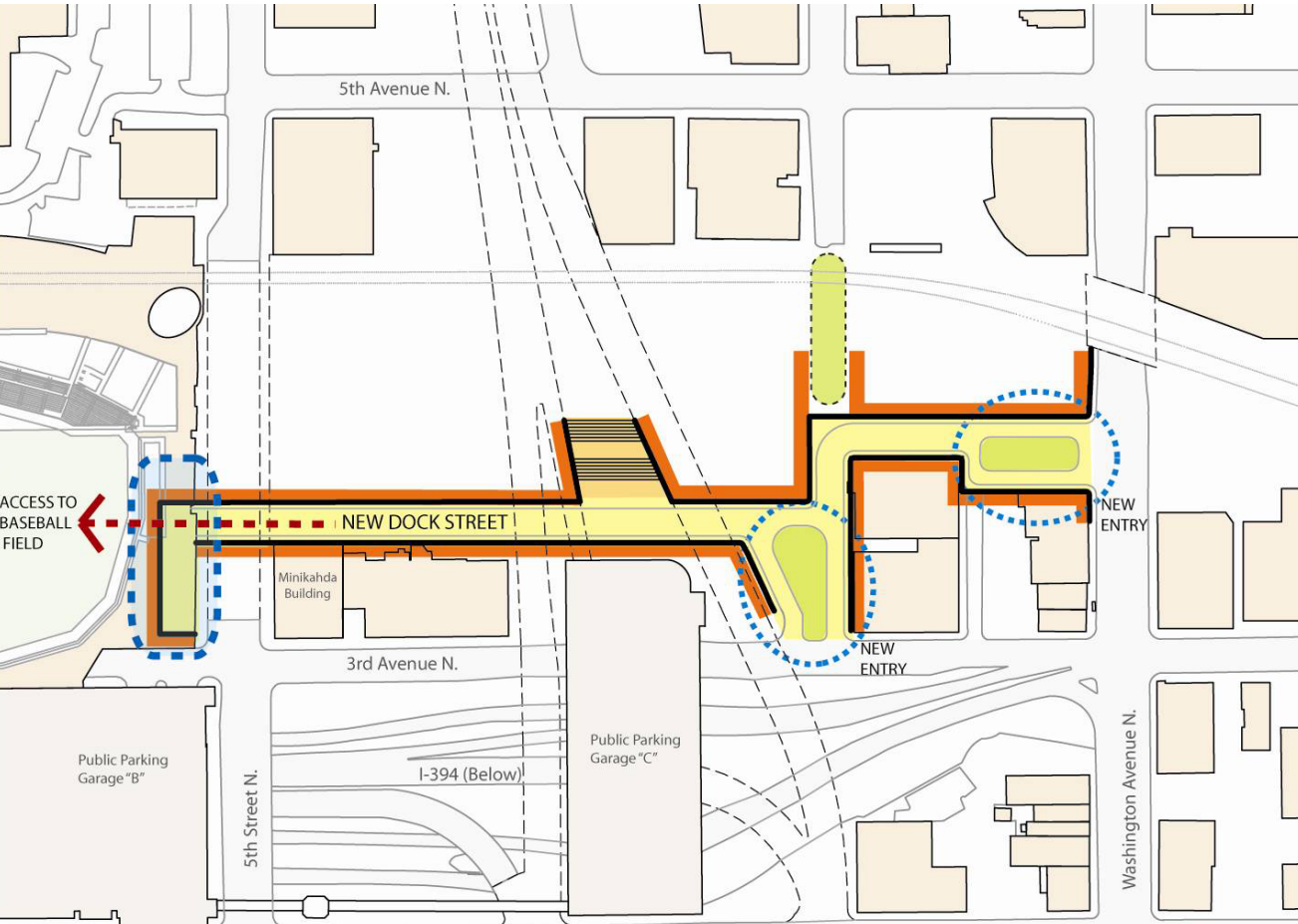
© 2003 MEREDITH MONTGOMERY

cedar lake trail



a vision study for the new **WASHINGTON BOULEVARD**





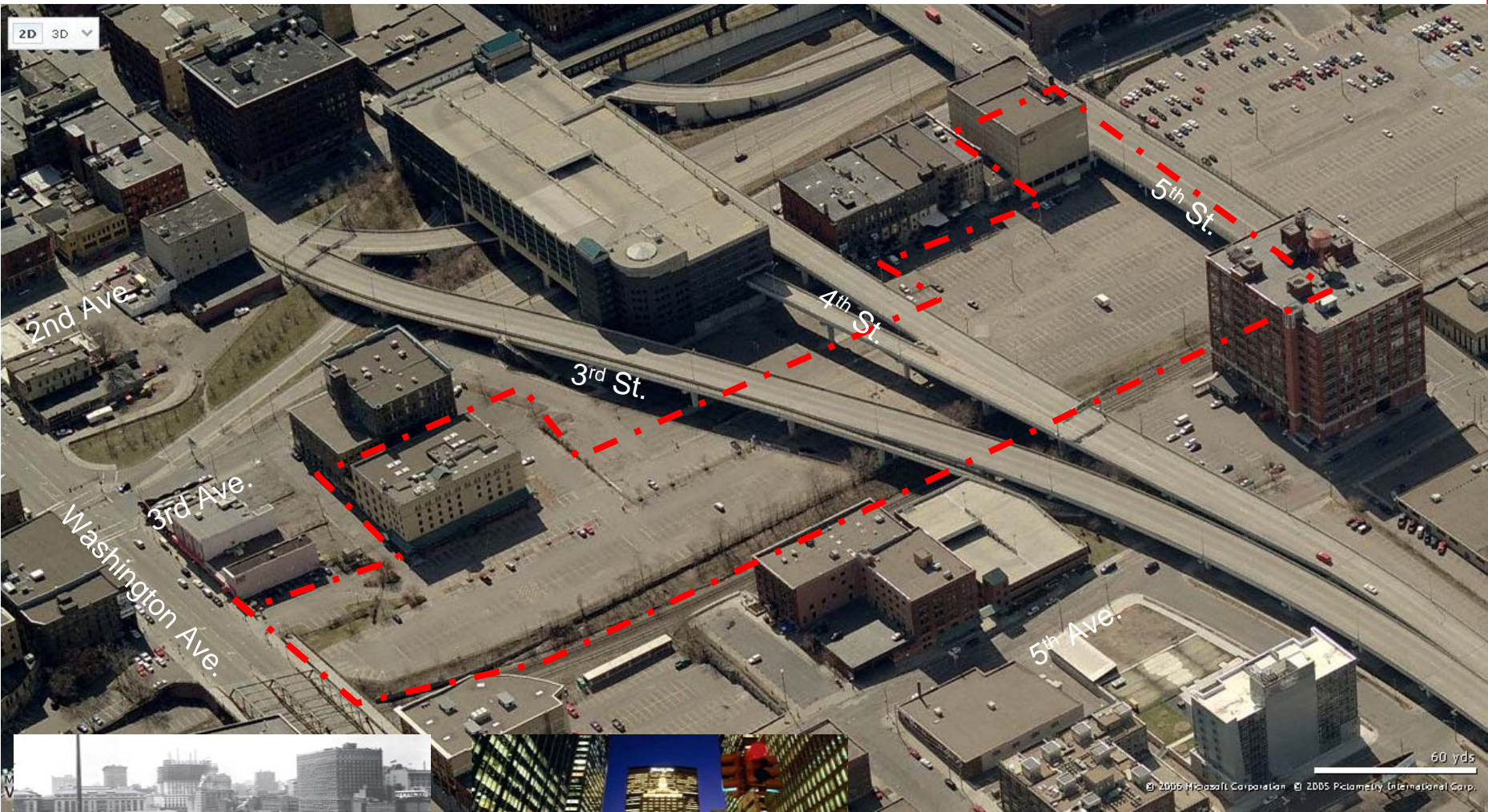
dock street ballpark neighborhood



a vision study for the new **WASHINGTON BOULEVARD**



Existing viaducts connecting to downtown



dock street ballpark neighborhood



hennepin to 5th ave. S.

a vision study for the new **WASHINGTON BOULEVARD**





downtown east/metrodome/vikings



downtown park



a vision study for the new **WASHINGTON BOULEVARD**





a vision study for the new **WASHINGTON BOULEVARD**

