

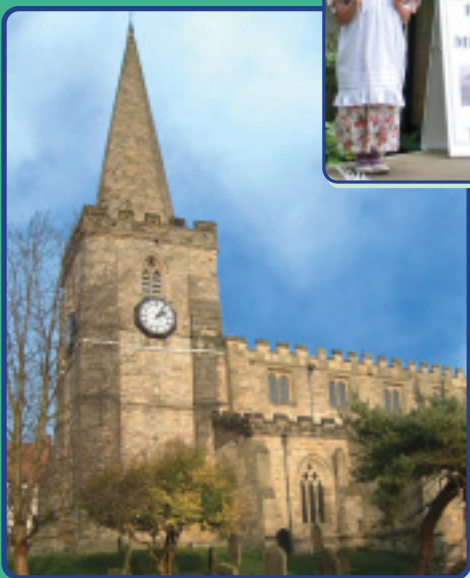
Pickering Town Guide

2006-2007

FULLY REVISED



PLUS GROUP



Boosting Business in Pickering



Danby Satellite & Aerials

Pickering & Area Local Service



High Quality TV & FM/DAB Aerials

Freeview Digital & Top-up TV

HDTV & Sky Plus Digital Systems

Large Plasma TV Installation

Motorised Satellite TV Specialists



Digital Satellite Encryption CAMs & Cards

Difficult Installations & Listed Buildings

Multipoint TV & Satellite TV Distribution

Computers Supplied, Updated & Repaired

Computer Viruses Removed/Home Visits

Telephone Lines & Broadband Internet

Radio Communications/Amateur Radio/CB

Electrical PAT Testing

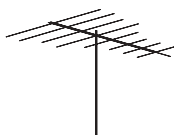


Prop: A. Danby I.Eng., M.I.E.E.I.E., G0KGA

Pickering 01751 474449

Mobile 07968 488998 • Fax 01751 474664

Website www.danby.co.uk



CONTENTS

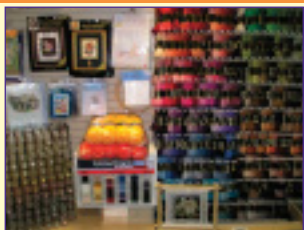
❖ Welcome to Pickering	5	The Parish Church of Saint Peter and Saint Paul Pickering	15
❖ Something for Everyone	6	Annual Events	16
❖ Wilf Ward's Amazing Legacy	7	The Memorial Hall	17
❖ Beck Isle Museum, Pickering	8	Pickering Town Map	18 / 19
❖ Arts in Pickering	9	Discover the Great Outdoors	20
❖ A Hidden Gem	10	Wartime Weekend: A Whole Community Event	21
❖ Lady Lumley's School: A Specialist Sports College	11	Changing Fortunes Of Pickering Pubs	21
❖ North Yorkshire Moors Railway	11	WEA Pickering Branch	23
❖ Pickering: A Centre of Variety	13	Important Telephone Numbers	23
❖ Pickering in Bloom	14	Food and Drink	33 / 34
❖ Saint Joseph's Church	15		

Front Cover Photo Credit : Beck Isle Museum, North Yorkshire Moors Railway

Published by Plus Publishing Services.

Copyright 2006: Plus Publishing Services, PO Box 276, Ashford, Kent TN24 8GN. Tel: 01233 643574.

Every effort has been made to ensure that the information in the Town Guide is correct and neither Plus Publishing Services nor Pickering Town Council accept responsibility for any loss or inconvenience arising from any errors which may have occurred.



WOOL & CRAFTS

*Quality Hand
Knitting Yarns*

Gutermann Threads

Anchor Tapestry Wool

*Sirdar Cross Stitch
Wendy Ribbons
Patons Buttons
Stylecraft Beads
Craft Kits Card Making*

*7 Eastgate Square,
Pickering*

01751 474949

SUNBURST Tanning Salon

**Look good, feel great -
Tan sensibly!**



**Come in and see our friendly
staff for information,
consultations and
special offers.**

**Try our latest tanning
products for that special tan.
Why not compliment your new
look with a manicure.**

SUNBURST

No 3, Eastgate Square, Pickering
Tel: 01751-471444

By Design

**6 Eastgate Square
Pickering YO18 7DP
Tel: 01751 473444**



Unusual Gifts

Equisite Jewellery

Stylish Home Accessories

Interior Design Consultation Service

Made to Measure Curtains & Blinds

Cushions Designed & Made to Order

Original Art By Commission

We are often told that you are what you eat.

We eat ORGANIC - Do you?

For one of the best selections of ORGANIC produce in Yorkshire, look no further than

The Organic Farmshop



in Westgate Carr Road,
Pickering

Tel: 01751 472249

Home-grown Vegetables and Beef. Home-made Quiches and Cakes plus lots more. Groceries, Fruit, Dairy, Cheeses and Icecream. Bacon, Ham, Pork and Chicken.

You will have seen the signs on the A170, so why not come and have a look, it will do you no harm, but, it may do you a lot of good!



The Barn Hotel & Tea Rooms

Hutton Le Hole, York
North Yorks YO62 6UA



Tel: 01751 417311

www.thebarnhotel.info

Open All Year Round

Family Run Establishment

6 En-Suite Bedrooms

Colour TV, Tea/Coffee Facilities

Table Licence, Log Fires

Centrally Located for Touring Moors, Coast & York

CASTLE CINEMA AND FUN FACTORY

10-11 Burgate, Pickering

Children's Play Area and Cinema

Showing New Released Films

Children's Parties Available

For Bookings and Enquiries

Please Contact

Castle Cinema

01751 472622

LADY LUMLEY'S SCHOOL



Swainsea Lane, Pickering,
North Yorkshire YO18 8NG

Tel: 01751 472846 / 473103

Fax: 01751 477259

e-mail: jtomsett@ladylumleys.freeserve.co.uk

in partnership with NYCC Ryedale
Community Education Service...

Tel: 01751 473209 during office hours

e-mail: gill.garbutt@northyorks.gov.uk

Serving Ryedale, we offer a wide range of formal and informal learning opportunities to people of all ages. Whether you are a student aged 11-18, or an adult wanting to update your professional or educational qualifications, or just wish to try a new hobby, please contact us and we will be happy to help you.

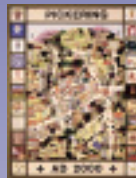
Courses are available throughout the district. Please contact us for further information and advice.

...Investing in your future





Welcome Welkom Willkommen Bienvenue



A message from the Town Mayor; Councillor Mrs Margaret Lowe

Welcome to Pickering, our small North Yorkshire market town; a town we're very proud of. I have lived here for almost thirty years now, and this year I have the honour of being Town Mayor. Pickering is often described as the "Gateway to the Moors", and is undoubtedly situated in a very beautiful area of England. We hope that you will enjoy this Guide and find, as I have, that it is well-worth keeping as a useful local reference. We have some marvellous attractions and businesses in Pickering and we hope that you will continue to support those local establishments who have enabled the publication of this Guide by advertising with us.

Pickering has indeed much to offer: a medieval castle, interesting churches, good hotels and cafes, exciting, good quality shops, the Beck Isle Museum, the North Yorkshire Moors Railway... my list could fill this Guide. We are very friendly here, so wherever you go in Pickering you will be made very welcome. If you are a visitor, please stay awhile and I can guarantee that you will be glad you came.



NORTH YORKSHIRE MOORS RAILWAY

Pickering – Levisham – Goathland – Grosmont

Running Daily 1st April to 29th October 2006

plus some winter dates, ring for details



Re-live the Golden Age of Steam on one of Britain's most popular heritage railways.

Travel on the 18 mile line through the spectacular countryside of the North Yorkshire Moors National Park.

Special Events and Dining Trains run throughout the year:

NEW Steam & Swing April, Diesel Gala May, Steam Gala May,
Moors 66 June, Vintage Vehicle July, Music on the Moors August,
Day out with Thomas September, Autumn Steam Gala Sept/October,
Wartime Weekend October, Wizard Weekend October

'WHITBY STEAM TRAINS'

***NEW* Regular Services Scheduled for 2006**

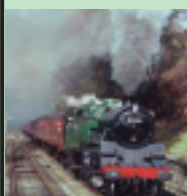
Enjoy all the delights of a journey through the North York Moors National Park and the Esk Valley, calling at stations along the way, to the historic seaside town of Whitby.

Advance Bookings & Information 01751 472508

Talking Timetable 01751 473535

Email – customerservices@nymr.fsnet.co.uk

Website – www.northyorkshiremoorsrailway.com



SOMETHING FOR EVERYONE

This remarkable, bustling market town with 6,500 inhabitants is not only a fascinating and friendly place for visitors, but is a vibrant



Walkers on Levisham Estate

Photo: Mike Kipling

and active local community for those who are fortunate enough to live here. Its situation, within easy reach of York, Middlesbrough, Leeds, Hull, Scarborough, Whitby and the lovely North York Moors National Park, is idyllic. There are transport links to all the main centres. The nearest

rail link is at Malton, 8 miles away, where connections can be made to York and the National Rail Network.

Pickering has many excellent local shops and businesses offering employment to local people and good personal service for all. Banking

Insurance and legal services are also based here. The town also has its own public library, police and fire stations and registrar's office. There is an active Town Council who meet monthly at the historic and recently renovated Memorial Hall.

Ecclesiastical and cultural factors add to the town's vitality. The focus of Roman Catholic activity in the area is on Potter Hill at St Joseph's Church though its roots date back to the Anglo-Saxon period and



Potter Hill

Photo: Alan Smith



Pickering's Award-Winning Tourist Information Centre

Information for
Local Residents and Visitors

- Where to Go
- What's On!
- Theatre and Events Tickets
- RDC Parking discs and discount cards
- Book Accommodation anywhere in the UK
- Maps, Guide Books, Souvenirs & Crafts
- Walking Information, Activities
- Timetable Enquiries

Open daily from 09.30
(except Winter Sundays) in The Ropery.

Tel: 01751 473791

Email: pickeringtic@btconnect.com

www.ryedale.gov.uk/tourism

- You're Welcome Here! -

CHOCOLART

5 Smiddy Hill, Pickering

01751 477755

Hand-made chocolates

Chocolate wedding and celebration cakes

Unique personalised Easter eggs

Christmas specialities

A beautiful gift for anytime of year

The Blindman

Roller Venetian Vertical Conservatory Roman Blinds

Tel: Pickering (01751) 476035

Tel: Mobile 07973 788170

Email: robtheblindman@hotmail.co.uk

Rob Anderson

Curtains Fabrics

Fitting Tracks + Poles

Andersons Fabrics

to a structure on the site of the present Anglican Church. The history of Independency, Methodism and the Society of Friends in the area is inextricably caught up with their buildings at, respectively, Potter Hill, Hungate and Castlegate. The refurbished Memorial Hall provides a venue for contemporary cultural activities and is the administrative centre of the Ryedale Festival.

Pickering itself is an important tourist centre in part because of the medieval survivals of both castle and church. The position of the

former is evidence of the area's role in underpinning Norman rule in the North of England whereas the Parish Church houses a series of fifteenth century murals which give a pictorial insight into the contemporary religious thought-world. Blandsby Park to the immediate north of the town remains part of



St. Christopher mural painting in Pickering Church



Market Place from Bridge Street

Photo: Andrew Danby

the Duchy of Lancaster which controlled both castle and town in the later medieval period. There are more recent developments which add to the town's attractiveness as a tourist centre not least the North York Moors (Steam) Railway.

Pickering provides its residents with daily reminders of the past but the community is not hidebound by it. The excellence of its schools gives its young people skills to meet the challenges they will face, reflecting the determination of the community as a whole to make its way in the modern world.

WILF WARD'S AMAZING LEGACY

The Wilf Ward Family Trust, based in Pickering, but now with over 70 respite and supported living schemes across North Yorkshire, was founded in 1986 by Wilf Ward O.B.E and his wife Phyllis. Wilf was very much inspired by a visit that he made to the Joseph Rowntree Trust community in York, where he became aware of the needs of those with severe learning difficulties for either permanent accommodation or respite care. Wilf and Phyllis, who were childless, funded the trust, with Richard Pacey as its director in 1986. The first home, Isabella Court, named after a nun, who was head of a nearby hospital, was opened in Pickering. Sadly Wilf died in

January 2005, but his amazing legacy lives on.

Over the last few years the trust, which has gone from strength to strength, is now one of the country's leading care providers. It employs more than 1,000 people offering fantastic careers with full support and training. It is headed by a Board of Trustees with a wide range of experience. The day to day functioning lies with the Chief Executive who, supported by a Director of Finance and Human Resources and two operational Directors, are all based in Pickering.

The Trust continues to grow and offer the very best in care for its users, people with learning difficulties and their families.

BECK ISLE MUSEUM, PICKERING

Since 1967 when the Beck Isle Museum was set up by a small group of local enthusiasts, it has seen many changes and developments. The number of visitors since opening now stands at 690,000. Recent local heritage community ventures have included talks, slide shows, schools projects and oral history work. The museum is now seen as a vital community resource as well as an important visitor attraction for the town.

Over the last few years the museum has improved access and facilities especially those for the disabled visitor. These include a



Beck Isle in Winter
Photo: Alan Smith

video terminal to show the upper galleries which are not accessible. Stair lifts including a chair lift have been added to the upper galleries in the courtyard buildings, ramps have replaced stairs wherever possible and disabled toilet facilities are now in place. Plans have been put forward to provide wheelchair access to the working Blacksmith's Forge for 2006.

Looking to the future the museum will continue to improve and move forward wherever finances and funding will allow. Winter time is normally a period of intense cleaning, maintenance and restoration and also volunteer training. Volunteers are currently working hard to computerise the collections data so it can become fully searchable. New exhibits this year include a fully restored Penny-farthing bicycle on loan from the Bayle Museum at Bridlington, a refurbished Victorian

PUFFERS - PICKERING MODEL CENTRE

- + MODEL RAILWAYS
- + DIE-CAST VEHICLES
- + PLASTIC KITS
- + SCALEXTRIC
- + RADIO CONTROLLED
- + DOLL'S HOUSES
- + TOYS
- + JIGSAWS
- + COLLECTOR'S CORNER
- + GAMES WORKSHOP
- + MAIL ORDER

Visit us at...

**7A, Park Street, Pickering
(opp. NYMR Railway Station)
Tel: 01751 472762**

"Like model shops use to be....."

★ ELITE CARS ★

1-8 SEATS
WHEELCHAIR ACCESS
AVAILABLE
www.elitecarsuk.com

★ 01751 477319 ★

17
BURGATE

17 Burgate
Pickering, N York
YO18 3AU
tel 01751 473463
www.17burgate.co.uk

A Market Town House
offering deluxe
individually designed
and furnished en suite
accommodation.

Awards— 5 diamonds
4 star

Printing Room, newly refurbished reception and shop area and a WWII Cloth Insignia and badges collection.

The museum's main source of income is from admissions and shop sales this is relied upon in



The vintage Columbian printing press

Photo: Beck Isle

order to meet running costs. In recent years grants have been awarded for project work and equipment which has helped to provide an oral history archive and an Industrial Heritage Gallery telling local stories of Pickering's lost industries and the Rosedale Ironstone Mines and Railway. The funding for this gallery was helped by the North York Moors National Park.

The museum is supported by a dedicated

Curator, Mr Gordon Clitheroe, who has been involved since the formation of the museum, together with about 80 stalwart volunteers.

Volunteers are always welcome in all areas of the museum including Documentation, the Oral History Group, as Desk Stewards, Researchers, Practical Helpers, Education Team members and Gardeners. This can be a great way of getting out and making friends in the community. Currently several young people are working at the museum

from local schools on work placement or extended work experience.

In a new book called 'Britain's Best Museums and Galleries' by Mark Fisher the museum gets a special mention. Local Guidebooks sum up Beck Isle's attractions, saying, 'No trip to Pickering is complete without a visit to this award winning museum'.

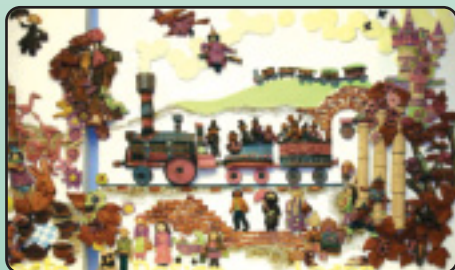


John Steel the working blacksmith at the museum forge

Photo: Beck Isle

ARTS IN PICKERING

For a small rural town, Pickering is remarkably vibrant; offering a choice of a wide variety of arts –especially painting, crafts, film, poetry, literature, writing groups, drama and many kinds of music and recreational classes. A myriad performances and exhibitions



Ceramic mural in the library made at Rock Cottage Pottery by Pickering Junior school children.

Photo: Brian Tozer

are arranged in halls, pubs, clubs and churches in Pickering and the surrounding villages.

- Professional craftspeople /artists are listed in the Brigantia brochure and Rosedale Glassworkers Gillies-Jones, have achieved international recognition.
- The Castle cinema in Pickering shows the latest films and, in addition specialises in those suitable for children. Ryedale Film Society in Pickering, offers over 20 international films a year.
- The Memorial Hall holds at least three major local Art exhibitions a year. "Busy Brushes" classes run by Angie McCall are very popular as is Pickering & District Art Club meetings.
- Kirkbymoorside Camera Club has many Pickering members whose work features in the local press.
- Pickering Musical Society based at the Kirk Theatre, offers pantomime, musicals and shows.

- Professional performers from Rural Arts on Tour visit with children's theatre and dance groups and Northern Lights bring unusual plays to the Friends House.
- Stagecraft Ryedale, based in Pickering play in the town and villages and at Wartime Weekend.
- Pickering Jazz club holds its own Jazz Festival – a week of traditional jazz.
- Ryedale Festival with an enthusiastic following for superb concerts in churches and local mansions has a new young director Justin Doyle who will be carrying on the success to greater heights to bring new experiences to its followers and attracting young audiences. 264
There is always something going on keep your eye on the local press, notice boards and visit the Tourist Information Centre.

A HIDDEN GEM

Tucked away at the end of Castlegate and behind Whitby Road, Pickering Castle is something of a hidden gem, waiting to be discovered. And it's only when you step inside the walls, that you realise how truly impressive the castle is.

It was originally built (in wood) by William the Conqueror as part of his campaign to suppress the "rebellious northerners" and was used for centuries after by a succession of kings. The wooden castle was eventually replaced by a stone version, the majority of whose towers and walls remain to this day.

The remains of the keep, which is at the heart of the castle, sit atop a huge man-made mound (or motte). The top of the mound is reached today by a wooden staircase and offers those willing to climb the steps superb views over the North York Moors and Ryedale countryside.

However, the castle wasn't just a royal stronghold. Set amongst one of the largest forests in the country, it was used by medieval kings as a hunting lodge, holiday home and even a stud farm. Visitors who are interested in finding



Pickering Castle

more about the castle's fascinating history will enjoy exploring the exhibition situated in the on-site chapel. In the last century it was the town's park and recreation ground and so today it is a lovely setting for special events as most of the site is accessible for wheelchairs.

Opening times April to October ring 01751 474989 or see website.

The Ryedale Laundry

Kirkbymoorside, North Yorkshire YO62 6DN

01751 431285

COMMERCIAL AND DOMESTIC
LAUNDERERS AND DRYCLEANERS

Door to door collections & deliveries
in Pickering and throughout Ryedale

Providing care & support that makes a difference

The Wilf Ward Family Trust began life in Pickering in 1988 with the opening of Isabella Court. We now provide services and support for people with learning and physical disabilities and their families throughout North, East and West Yorkshire.

We have an unrivalled reputation for running community and day care services. Along with on-going expansion - we employ around 1,000 people - we always want to hear from people who want to work in the care sector.

To learn more about our careers and services ring our recruitment hotline on **(0845) 606 6352**



or write to:
**Westgate House, 5 Westgate,
Pickering, YO18 8BA.**
Also email: info@wilfward.org.uk

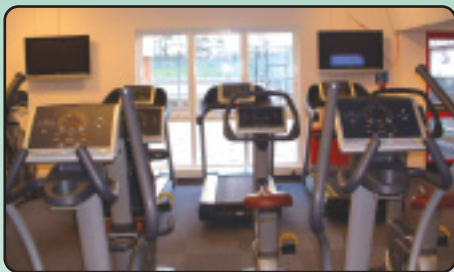
LADY LUMLEY'S SCHOOL: A SPECIALIST SPORTS COLLEGE

From September 2005, Lady Lumley's School in Pickering became one of 400 Specialist Sports Colleges in the country. Having submitted a detailed application, including a detailed audit of current provision and a number of specific target based objectives, the School heard last April that they had been successful.

As a Sports College the students will benefit from increased sport provision, new extra curricular opportunities and even better facilities. Already boasting an astro turf, seven tennis courts and a sports hall the school has recently installed a state of the art fitness suite and updated both the school and the Leisure Centre changing rooms. The new fitness suite is a designated Inclusive Fitness Initiative Site and is subsequently designed to allow maximum access to all user groups.

Sports College benefits will also extend into our feeder primary schools and the wider community. Two new sports clubs, basketball and tennis are being established at the Northern Ryedale Leisure Centre and a range of coaching courses such as badminton, basketball, football and athletics are being planned.

Within school it's not just the sporting



Gym machines at Lady Lumley's School

Photo: Paul Simpson

pro prowess of our youngsters that we are hoping to improve, it is proven that high quality PE and school sport benefit our young people in all aspects of their life. Sport improves confidence, teamwork, health, self esteem and levels of maturity. Our mission statement at the school is "to inspire everyone in our School Community with a love of learning and, by doing so, maximise their life chances." Being a Specialist Sports College will certainly help us achieve this. Anyone wishing for further information regarding Sport Courses contact: Stuart Cleary, Director of School and Community Sport, 01751 470038.

NORTH YORKSHIRE MOORS RAILWAY

The North Yorkshire Moors Railway is Britain's most popular Heritage Railway carrying over 300,000 passengers a year. It journeys through 18 miles of beautiful North York Moors National Park from the market town of Pickering calling at Newtondale, Levisham, Goathland and terminating at Grosmont. Goathland village is perhaps better known by many as Aidensfield in YTV's popular Heartbeat series and was more recently

featured in Harry Potter as Hogsmeade where Harry attends the school of witchcraft and wizardry.

A day on the railway offers more than just a ride on a steam train, with beautifully restored period stations, shops, refreshment rooms, locomotive viewing sheds, historical information, walks in the countryside – whatever you want from a day out you're sure to find it with the North Yorkshire Moors Railway.



The Station platform

Photo: Pickering in Bloom

2006 will see the return to the rails of one of our most famous locomotives 'Sir Nigel Gresley'. An intensive overhaul began back in October 2001 and, after much hard work, we are delighted to have Sir Nigel back with us this year. 2006 will also see the NYMR commence a regular schedule of steam services between Grosmont and Whitby.

A range of special events are run throughout

the year, appealing to all ages and all visitors not just heritage enthusiasts. "Moors 65" is a 1960's themed event with a wide variety of entertainments. Most popular are the 1960's tribute band concerts which certainly get you "in the mood". A Wizard Weekend gives a magical day out in November with live owls, falconry displays, magic shows and more. Then of course we have our Steam and Diesel Galas, Music on The Moors, Vintage Vehicle, Wartime Weekend, Santa Specials, Day Out With Thomas and new in 2006 "Steam & Swing", a beer festival and a Bonfire Special.



The Green Arrow in Pickering Station

Photo: Tony Danks



ALBA ROSE – 19 RESIDENTS

ALBA ROSE

PICKERING

CARING FOR OLDER PEOPLE

Our Care Home at Keld Head Hall is a former "Convent" and offers quality Social Care in attractive and spacious grounds.

Situated on the edge of the North York Moors, Keld Head Hall is encircled by trees and overlooks an open paddock making an ideal setting for peace and privacy. Bedrooms are large and have en-suite facilities. Residents are encouraged to make their rooms as individual as they wish, private telephone lines are available.

Inspection reports of any home are available from www.csci.org.uk.

For Information Contact:
Mrs Anne-Marie Whincup,
RGN, Proprietor.

TELEPHONE
NUMBER:
01751 472754

Keld Head Hall
Middleton Road
Pickering YO18 8NR

PICKERING: A CENTRE OF VARIETY

Not only are there interesting things to do in Pickering, but the town is well placed as a centre for visiting many other places in the area.

Pickering is the gateway to the North York Moors where you can walk for miles in splendid isolation or visit the many villages within the National Park. These vary from the well known spots such as Hutton-le Hole with its fascinating museum and Rosedale Abbey without an Abbey but with stupendous views and local crafts to lesser known gems such as Lastingham with its ancient church, Appleton-le Moors with its uncharacteristically wide street roamed by sheep, Sinnington with its attractive riverside or Hartoft which used to be a centre of mining.

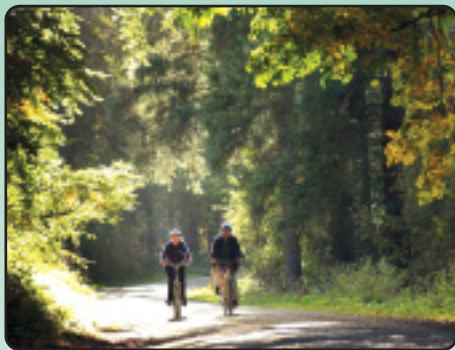


Heather moorland near Skelton Tower

Photo: National Parks

The coast is only a short drive away offering not only Whitby and Scarborough with their many attractions but smaller places such as Robin Hoods Bay (end of the Coast to Coast walk) or Runswick Bay which is so sheltered that palm trees flourish there. The sites of the old alum works at Ravenscar are worth a visit and the cliffs there also afford a fantastic view of the coastline. Further down the coast is the RSPB reserve at Bempton Cliffs where you can see numerous seabirds including fascinating puffins.

For the historically minded the area offers a large number of stately homes including Castle Howard, Nunnington Hall, Scampston Hall and



Cyclists in Dalby Forest

Photo: Tony Bartholomew

Duncombe Park. Alternatively, you can walk in the steps of the Romans at Cawthorne Camp or visit Rievaulx Abbey home for many years to the Cistercian Monks. As well as in Pickering there are ancient castles in both Helmsley and Scarborough each providing an interesting experience.

No visit to this area would be complete with a trip to York. Here you can trace the Vikings, the Romans or even the Victorians. The famous Minster dominates the town but there are also many fascinating smaller churches well worth a visit. You can walk around the walls, cruise on the river or satisfy your shopping needs with a stroll along the cobbled Shambles to see the many and varied individual shops situated there.

Just to the east of Pickering, not far from the picturesque village of Thornton-le Dale, a must see place in its own right, lies Dalby Forest. The nine mile forest trail provides access to a huge number of attractions including cycle trails (from family level to arduous), barbecue areas, playgrounds and waymarked walks which link up with the moors. There is an abundance of wild life and it is possible to spend a whole day there.

Further west is Sutton Bank with a fine visitor centre, far reaching views of the Vale of York and the Yorkshire Dales, and easy access to the White Horse of Kilburn one of this country's fascinating hillside carvings. You can also watch gliders taking off and soaring go above.

PICKERING IN BLOOM

The Pickering In Bloom Group was formed in 1987 as an advisory working party to the Town Council. Its duties were to identify any areas that were in need of attention and, on the instruction of the Council, assist in such work as bulb planting, verge tidying and even Beck cleaning!

By January 2005 the In Bloom Group became independent of the Town Council. As a voluntary constituted body it could access a greater range of funds, and work more effectively in terms of putting Pickering back in the running with the "Yorkshire in Bloom" competition. The hard work of the very dedicated group paid off, and in September 2005 the team achieved a "Yorkshire in Bloom" award.

Work never stops. The first phase of replanting Smiddy Hill was completed in 2005, and the team is working with other groups to bring more improvements to this popular open space. Pickering In Bloom are also working with the local Scout and Cub group to



Blooming hard work!

Photo: Pickering in Bloom

celebrate their Centenary year; creating long term floral displays in the other planting areas. There are many other areas of town where work is always needed and you will often see

volunteers with their fluorescent jackets beavering away to create an attractive town.

The group is always looking for new helpers; if you don't want to dig, you might be able to help with ideas or to raise funds. Their contact number and website address appear in the contact pages of this guide.

Clothes 4 Comfort

Ladies' fashions and accessories

RECENTLY EXPANDED

Now stocking:

Alice Collins	Tulcan
Viz a Viz	Bianco
Gardeur	Gelco
Fosby	David Barry

Maltongate, Thornton-le-dale

Tel: 01751 477996

**Open 10.00am to 4.00pm
Closed Monday**

Pickering Memorial Hall

A Wonderful Community Facility

- Superbly modernised, accessible to all
- From small gatherings to full wedding receptions, discos, conferences etc.
- Office open every weekday morning for bookings and any information

Tel: 01751 477522

Email: enquiries@pickering-memorial-hall.co.uk
The Memorial Hall, Potter Hill, Pickering YO18 8AA

PWMCT Registered Charity no. 1045498



Brigham Park

**Quality Pay & Play Golf
for the Entire Family**

Nine Hole Par 3 Golf Course
Ideal for Beginners of Any Age
Equipment Hire Available
Open Daily During Daylight Hours
Malton Road, Pickering
01751 477188

SAINT JOSEPH'S CHURCH

Known as "The Secret Jewel in Pickering's Crown" the beautiful church of Saint Joseph is rated by English Heritage as one of the hundred best Catholic churches in England. Completed in 1911, this masterpiece by the distinguished architect Leonard Stokes contains a magnificent stone font by the sculptor Eric Gill and a recently restored statue of Saint Joseph by Peter Paul Pugin, son of Augustus Welby Pugin. Among its many interesting furnishings are: the portable altar which Nicholas Postgate, the seventeenth century Catholic martyr, had on him on the morning of his execution, and a brass sanctuary lamp made from shell cases by Polish soldiers during the second world war.

No stay in Pickering is complete without a visit to this exquisite treasure.



The font, by the famous sculptor Eric Gill

THE PARISH CHURCH OF SAINT PETER AND SAINT PAUL PICKERING

As you walk into Pickering Parish Church, you are faced with the great wall-painting of St. Christopher - the patron saint of Pilgrims and Travellers. That is appropriate as we welcome many thousands of visitors from all over the world to our church. Many come to see those famous wall-paintings, which date from the middle of the 15th century. Pevsner calls them "the most complete collection of mediaeval wall-paintings in England" and they are well worth coming to see in one of the most traditionally beautiful and welcoming churches in this part of Yorkshire.

But Pickering Parish Church is not just an ancient monument; it remains the spiritual heart of the town, always open for prayer, the lighting of personal candles and helping so many on that other pilgrimage - the journey of life. Pickering children are baptised in its Saxon font, the bells ring out for weddings and toll for funerals. Its ancient walls echo to the children's carols at Christmastime as well as to the solemn hymns of Remembrance Sunday. It is, quite simply, a Parish Church which is there for the whole community, and everyone is welcome to our services, particularly the Family Eucharist at 10am every Sunday.

We have a lovely Parish Prayer which says:

Lord Jesus Christ, you have called us to follow you in our journey through life.
Guard us and guide us along the road that lies ahead.

Be with us every step of the way, and lead us safely home. Amen.

Come and pray that prayer with us and make it your own.



The church porch

Photo: Alan Smith

ANNUAL EVENTS

- January Pantomime – Kirk Theatre
- February Anniversary celebrations,
Memorial Hall
- Easter Art Exhibition Memorial Hall
- Easter Country Music Festival
- Spring Annual Amateur Musical Kirk Theatre
- May North Yorkshire Moors Railway
Diesel Gala



A 1960s train built at Darlington

Photo: Andrew Danby

- May Game & Country Fair. Pickering
Showground
- May North Yorkshire Moors Railway
Steam Gala
- June Northern Street Car Show -
Pickering Showground
- June Open-air Concerts, Dalby Forest.
- July North Yorkshire Moors
Railway Vintage Vehicle Weekend,
with vintage cycles and motorcycles
at the Beck Isle Museum
- July Pickering Jazz Festival



Pickering's new bus service!

Photo: Alan Smith

- July Ryedale Music Festival
- July Ryedale Agricultural Show. Welburn
Kirkbymoorside
- August Steam and Traction Engine Rally.
Pickering Showground
- August Thornton Dale Show



Traction engines come to town

Photo: Alan Smith

- August Rosedale Show
- August Farndale Show
- August Pickering Horticultural Society Show
- Sept Vale of Pickering Art Exhibition
- Sept National Heritage Weekend. Free
admission to Beck Isle Museum
- Sept Northern Model Engineering &
Modelling Exhibition, Showground
- Sept/Oct Pickering Railway Modellers
Exhibition Memorial Hall



Wartime weekend in Bridge Street

Photo: Alan Smith

- Sept/Oct North Yorkshire Moors Railway –
Autumn Steam Gala
- Oct Wartime Weekend
North Yorkshire Moors Railway
- Oct Wartime Weekend British
Restaurant and concert
Memorial Hall
- Nov Pickering Horticultural
Show (Chrysanthemums).
Memorial Hall

**For other events see
Tourist Information Centre
(tel. 01751 473791),
local newspapers and websites**

THE MEMORIAL HALL: A SUPERB COMMUNITY FACILITY

In the autumn of 2005 a reputable national newspaper reported that 50% of the Village Halls in rural Yorkshire had been forced to close. Increasing costs of insurance, health and safety regulations, disability compliance, higher client expectations and, above all, shortage of volunteers threaten these community halls, which have, for as long as anyone can remember, provided a focus for the many and varied activities of generations and acted as a hub for local life.

Against this background Pickering Memorial Hall, a grade 2 listed building constructed in 1861 as a corn mill and donated to the people of Pickering as a War Memorial after World War I, continues to offer a superb community facility to Pickering residents. The Hall was extensively and tastefully refurbished in 2001, at a cost of £800K. The aim of this refurbishment was to continue to meet the needs of local residents for a place to get together to learn, entertain, be entertained, educate, develop interests and hold a wide variety of family celebrations; whilst providing a beacon of excellence in terms of facilities which fully comply with modern legislative requirements.

Meeting these aims, whilst retaining the warm and inviting atmosphere associated with an old fashioned village hall, is not without difficulty in the present climate. Ever increasing work demands on young families and ever increasing national legislation combined with spiralling costs of utilities mean that the demands of staffing and running the Hall present daily challenges for a small, but extremely hardworking group of local volunteers. The rewards of this kind of community work are certainly not financial but, for those involved, it is most gratifying to see the Hall used, in any one week, by local people of all ages and from all walks of life. From the musical groups for babies and toddlers, through teenage discos, blood

transfusion sessions, educational courses, cancer support groups, coffee mornings, art exhibitions, wedding receptions, children's parties and many kinds of entertainment and leisure activities, Pickering Memorial Hall continues to pursue that most intangible of its aims to "bind the local community together".



Memorial Hall

Photo: PWMC Trust

For residents and visitors there is genuinely something for everyone at the Hall. The office is staffed 5 days a week by a committed team who give a great deal of voluntary time to maintain high standards of customer service. Those involved in the vital fund-raising, administration and general running of the Hall hope that this valuable provision will continue to develop and to grow in terms of those it serves. However, more volunteers with time, enthusiasm and expertise are desperately needed in order to meet ever increasing demands. Pickering people can be very proud of this unique facility, but it will not run itself. If local residents and visitors value the Hall they will need to continue to support it both in terms of managing the service, and patronising its activities. To coin an overused but apposite expression: If we don't use it, we'll lose it!

Photo: D. Ritson



KEY TO TOWN PLAN

P(S) = Car Park: short stay

P = Car Park

i = Tourist Information Centre

R/L = Resource Centre/Library

PO = Post Office

= Main Bus Stops

= Steam Railway

= Public Telephone

= Public Toilets

= Steps

= Footpath

= Key Attractions



Photo: P. Harris

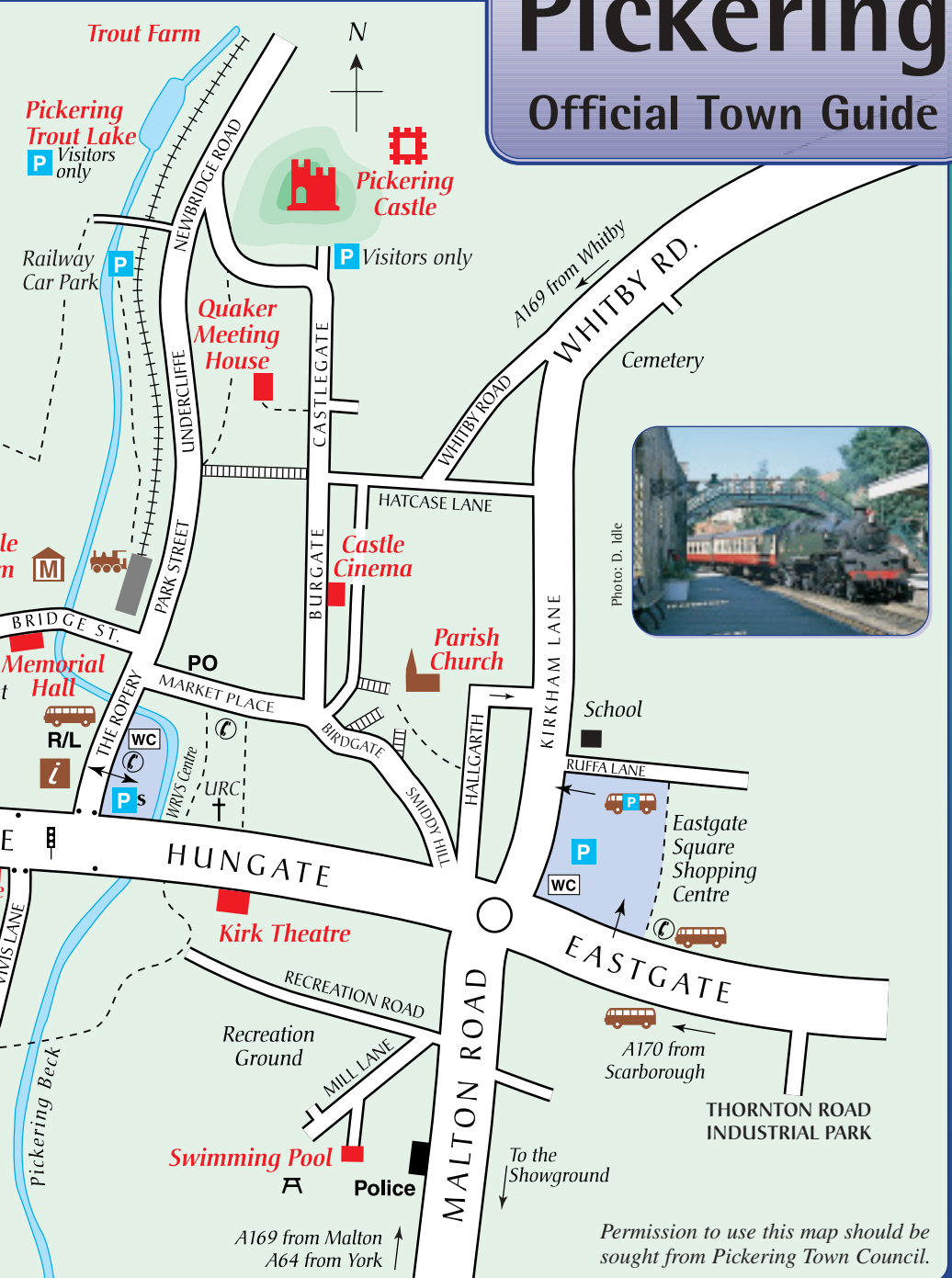


Photo: S. Walker



Pickering

Official Town Guide



Permission to use this map should be sought from Pickering Town Council.

DISCOVER THE GREAT OUTDOORS

Pickering is a great place to start an exploration of the North York Moors. There are lots of opportunities for walking and cycling right on the doorstep! Whether you are looking for an easy short walk or a long-distance bike challenge, there is something nearby that will suit everyone.

A fantastic circular walk starts from Pickering Market Place. It passes through pasture and woodland and runs alongside the tranquil Pickering Beck. The five mile walk takes around 2.5 hours and is an excellent introduction to some of the diverse landscapes found in the North York Moors National Park. It takes you to Blansby Park – which was part of the Royal Forest of Pickering in Medieval times where deer were hunted by the King.



The Beckside Walk

Photo: Alan Smith

Pickering also has excellent public transport links and there are lots of options for walks further afield. During the summer months, you can hop on and off the Moorsbus to create a day out tailored to your needs, or jump on the scenic North Yorkshire Moors Railway, which travels through the stunning Newtondale Valley.

Newtondale Halt is a special walker's request stop and from here, you can climb up to Levisham Estate – 1359 acres of beautiful moorland and ancient woodland. Enjoy a picnic at the romantic ruins of Skelton Tower or watch the steam trains snake their way through the valley. If you are lucky, you might spot a red

grouse, curlew or even a merlin. You will need a copy of Ordnance Survey Explorer map OL27 to plan your route.



A walk in the woods

Photo: Alan Smith

Goathland is also reached by NYMR and offers some excellent walks that present an opportunity to escape the crowds and discover some of the area's hidden gems. Nearby you can discover Goathland's fascinating past and enjoy the remains of a possible Roman road. A book of five circular walks "Walks Around Goathland" has been published by the National Park Authority and is a good starting point for exploring the area.

Dalby Forest is only a short distance away and offers a range of cycling routes for all abilities – from an easy family cycle to an adrenaline rush on the challenging black route. Bike hire is available and there's a visitor centre that can provide you with maps and advice to plan your trip. If you are feeling really keen, you could even try a section of the long-distance Moor to Sea Cycle Route that passes through



Walkers on Levisham Estate

Photo: Mike Kipling

Pickering on the way to Whitby and Scarborough. Whether walking, cycling or travelling by public transport, Pickering is the ideal centre for those who wish to improve their own wellbeing and enjoy the great outdoors.

WARTIME WEEKEND: A WHOLE COMMUNITY EVENT

For three days during the second weekend in October our normally gently bustling market town undergoes a startling transformation. The whole of Pickering enters a magical time warp as thousands of visitors join locals to step back more than sixty years, entering into the “wartime” spirit and taking part in a wide variety of entertainment and fun.



Wartime Weekend Fashions

Photo: Alan Smith

Hotels, holiday cottages and guest houses are often fully booked many months before the event. Wartime restaurants spring up at Pickering Station, the Memorial Hall and in the WRVS building. Many local cafes undergo a historical makeover, serving forties favourites such as corned beef hash to the many visitors, who in period clothing and uniforms, who pack the town’s streets. Several big band dances, jitterbug nights and a wide variety of less strenuous entertainment, including the well-loved wartime musical show at the Kirk Theatre and the ever popular ukulele men at the Memorial Hall, are all sold out well in advance.

Although the event was initiated by the North Yorkshire Moors Railway, which continues to be the driving force and the main focus of the celebrations, the townspeople of Pickering, in particular those who are involved in running voluntary organisations and local businesses, have made the whole occasion their own.

CHANGING FORTUNES OF PICKERING PUBS

Inns have been important social centres from earliest times when people walked or rode a horse to market. A big expansion took place when the turnpike roads resulted in a more frequent coach service. Soon the development of the railways added to the demand. An inn had to supply fresh horses as well as beds and food – later carriages and taxis were required to bring the visitors from the railway station. Present day inns are expected to provide not only beer but also modern facilities, including garaging and first class local fresh food and finest wines.

The Bay Horse and The Rose vie to be the oldest with their timber-framed buildings. The Rose was the first hostelry on the approach from the west across the mediaeval bridge, where previously there was a ford. The Bay Horse tells of the billeting of Cromwell’s officers and horses. It was once the Post House where mail could be posted or collected. The earliest public houses were literally the public room of a private house and if you go into any of Pickering’s inns or pub, it is still possible to see the size of the original cosy rooms.

PICKERING TOWN GUIDE

The White Swan was once a modest cottage with two small rooms and a kitchen, which on becoming a coaching inn for "England Rejoices" coach, expanded upwards and backwards to make the Georgian style building of today. The Black Swan's origins were much grander as it was adapted from an Earl's residence with two "messuages" or main rooms and was able to service the passengers in the Royal Mail coach "The Neptune" for travellers between York and Whitby. Some of the Black Swan's landlords have been impresarios holding cock fights and plays in the courtyard or arranging the Pickering Races on the Moor.

Before Pickering had its own magistrates' court, justice was dispensed by the magistrates alternating between the White and Black Swan - not so comfortable with the accused and the accuser cheek by jowl. At one time The Black Swan "mine host" also kept the keys to the Parish church.

Some of our pubs started out as another business for which selling beer was an added extra. The Lettered Board was once a butcher's shop selling its own beef, raised south of

Pickering and slaughtered at the rear of the building. The meat was sold on the left and the beer and tobacco on the right of the



The Horse Shoe Inn

Photo: Alan Smith

present door. The Horse Shoe was a blacksmiths with beer served "while you wait". The smithy was the room behind the archway. Later the smith made farm machinery but adapted in the 30's to hiring bicycles, servicing cars and selling petrol.

To find out about the inns which disappeared take a Pickering Guided Walk. To discover more about the existing ones look inside the present pubs for a short historical framed résumé.





**Yorkshire's Finest
Award Winning**



Handmade Baking & Fine Foods

<p>Home Made Fruit & Savoury Pies Home Made Quiches Hand Baked Speciality Breads Hand Raised Pork Pies</p>	<p>Foods for Diabetics Pickles Chutneys & Preserves Cakes Fruit Loaves Hampers Galore & Lots More!</p>
--	--



WE ONLY USE THE FINEST LOCAL, FRESH, NATURAL
INGREDIENTS, AVOIDING PRESERVATIVES AND
ARTIFICIAL ADDITIVES

44 Biergate, Pickering
North Yorkshire **Tel 01751 475114**

NIGEL BARNES

**Plumbing, Heating,
Gas and Leadwork
Contractor**



**Pickering,
North Yorkshire YO18 8DQ**

**Tel: 01751 475382
Mobile: 07733 245295**



EASTGATE VETERINARY CENTRE

K.E. WILSON, B.V.M.S., M.R.C.V.S.
LAURA MOXON, MA VET MB. M.R.C.V.S.
VETERINARY SURGEONS

**133 Eastgate, Pickering,
North Yorkshire
YO18 7DW**

**Telephone:
24 Hours 01751 472204
Fax/Tel: 01751 477489**

Surgery by appointment
Monday - Friday 9-11am 2-3pm 5-7pm
Saturday 9.30-11.30am

WEA PICKERING BRANCH: EXCITING EDUCATIONAL OPPORTUNITIES FOR ALL

The Workers' Educational Association, which was founded in 1903, provides exciting educational opportunities for adults of all ages and persuasions. The Pickering Branch is very active and regularly provides series of courses beginning in September and January. These vary in content to meet current needs but local history, archaeology, literature, and wine tasting are much in demand. Popular new courses include Digital Imaging and Yoga. In addition, the Branch arranges Day Schools, usually on a Saturday, in order to make them accessible to as many people as possible. These have been on the History of the Garden,

Abstract Art and Local Battlefields.

The Branch is run by a voluntary committee, and is supported by the staff of the Yorkshire and Humber Region. Programmes are planned in the early spring, with publicity in August, and aim to provide lecturers of quality. Sessions usually last for 2 hours, often in the day time to suit local need. Everyone is welcome, but numbers are limited for some courses. The WEA telephone number is published in the contact pages of this Guide. Up to date information about courses can be found on posters around Town, at Pickering T.I.C. and The Memorial Hall.

IMPORTANT TELEPHONE NUMBERS

Health

Chemists (Prescription)

Pickering Surgery 01751 477555
FJH Wrothwell Ltd 01751 472550

Doctor and Dentist

Pickering Surgery
(Medical services) 01751 472441
Health Visitors 01751 475405
Clinic (Train Lane) 01751 472657
NHS Direct
and Dental emergency 0845 46 47

Hospitals

Malton 01653 693041
Scarborough 01723 368111
Whitby 01947 604851
York 01904 631313

Help Lines

Alcoholics Anonymous
24 hour helpline 0845 7697555

Alcohol and Drug Misuse Service

(Drugs Help line and Drink line) 0800 9178282
Childline 0800 1111
Samaritans 08457 909090
Women's Aid 0808 2000 247

Transport

Buses

East Yorkshire (Scarborough and District)
Scarborough/Helmsley 01723 503020
Yorkshire Coastliner
(Scarborough/York/Leeds) 01653 692556
0113 2448976

Moors Bus (From Easter)
(Check with Tourist Information) 01751 473791
National Express
(Countrywide routes) 08705 808080
North Yorkshire Transport



0870 6082608

PICKERING TOWN GUIDE

Pickering Town Bus
(Contact Tourist Information) 01751 473791

Trains
National Rail enquiries 0845 748 4950
North Yorkshire Moors
Railway
(Seasonal - times vary) 01751 472508

Taxis
(For list contact
Tourist Information) 01751 473791

Services

General Services

Police Control Centre
(non-emergency) 0845 606 0247
Post Office 01751 472256
Radio Reception Advice 0870 010 0123
Refuse Disposal 01653 600666
Registrar of Births, Deaths
and Marriages 01653 692285
Royal Mail (Pickering) 01751 472537
Social Services 0845 950 1555
Trading Standards 0845 124 2424
Sewerage 0845 124 2429
Yorkshire Water 0845 124 2424
Citizen's Advice Bureau 01653 692740

Councils

Pickering Town Council
(10 am to 2 pm) 01751 476503
Ryedale District Council 01653 600666
Emergencies - outside office hours
01653 697737
Area Office - Pickering Mondays only
01751 472726

North Yorkshire
County Council 01609 780780
Scarborough
Borough Council 01723 232323

Utilities

British Telecom Faults 0800 800 151
Northern Electric
Emergency loss of supply
and faults 0800 668877
Yorkshire Electricity Emergency
loss of supply and faults 0800 375675
Environmental Health 01653 600666
Fire (general enquiries) 01653 692626
Floodline Information 08459 88 1188

Gas
Emergency/Leaks TRANSCO 0800 111 999
Pest Control 01653 600666

Note: 0800 numbers are free. Full list of telephone lines of Benefit Agency, Local Councils, Electricity, Gas, Help Lines, Hospital, Police, Railways, Social Services, Water etc. available in your Telephone Directory or Yellow Pages.

General Information

Agencies and Associations promoting Health and Social Care

Benefits Agency
- Scarborough 01723 504000
- York 01904 682100

Care and health in the Community

British Red Cross
(Pickering Branch) 01751 474922
British Red Cross
General Enquiries 01723 372769
British Red Cross
Escort Service 01653 696188
Citizens Advice Bureau
(Pickering appointments available) 01653 692740



WRVS Community Centre Hungate, Pickering

Available for hire weekdays, evenings and weekends at competitive rates

For more details call **01751 472681**

WRVS helps older people to enjoy life more

WRVS is a registered charity

www.wrvs.org.uk

Come and be creative at...



pot doodles
ceramic studio

Paint a piece of pottery
- fun for all the family!

Birthday Parties Youth Groups
Celebration plates Baby Footprints
School Visits Hen Nights

Just bring your imagination!

POT DOODLES
 THORNTON LE DALE,
 PICKERING, YORKS
 01751 474447 - potdoodles@bt.com
www.potdoodles.co.uk

PICKERING TOWN GUIDE

Community Service Volunteers (Lady Lumley's School)	01751 477282	Ings Garth Community Centre (Bingo, Dominoes etc)	01751 473816
National Blood Service	0845 771 1711	Lifeline (Orchard Close)	01751 474922
Ryedale Carers Support	01751 473194	Orchard Close Community Centre (Hawthorne Lane)	01751 472891
<u>Ryedale Community Transport</u> (RYECAT) Car scheme, Wheels to work and Rural minibus brokerage	01653 699059	Over 60's Club, Hungate (Wednesday afternoons)	01751 472681
<u>Ryedale Voluntary Action</u> (Support for local community groups)	01653 600120	Probus	01751 431175
Ryedale Counselling Service	01653 690124	Rest a While afternoon tea/chat (Monday, Methodist Hall, Potter Hill)	01751 472810
<u>Ryedale Volunteers Project</u> , Community House, Wentworth Street, Malton	01653 600120	Over 50's Forum (Social and campaigning)	01653 692601
(matches people who would like to help with groups that need help)		Ryedale Over 50s (050), Friendship Centre	01751 477448
Scarborough and Ryedale Carers (Support and advice for carers)	01751 473727	Ryedale University of the Third Age (U3A),	01751 476354
Talking Magazine for the Blind and Partially Sighted	01751 474862	Tuesday Lunch Club (WRVS Centre)	01751 473488
In Touch Club for Visually Impaired	01751 476198	<u>Residential Care</u> Alba Rose Residential Home	01751 472754
WRVS (Meals on Wheels and Books on Wheels)	01751 472804	Arden House Residential home	01751 473569
<u>Children/Parents</u> Parents in Ryedale/Pickering	01751 473488	No.5 Whitby Road	01751 473369
Ryedale Special Families (121 Town Street, Old Malton)	01653 699000	Wilf Ward Family Trust, Isabella Court	01751 474740
<u>Older People Community and Support Groups</u> Age Concern Coffee Morning (Thurs Mornings Liberal Club)		<u>Community Service Groups</u> Lions	01751 417363
British Legion Coffee Morning (Sat and Wed mornings)	01751 474446	Round Table/Inner Wheel Rotary	01751 475720 01723 859323
Champleys Yard		Pickering Playing Fields Association Support Group	01751 476313
		Pickering Community Events Group	472686/476816
		<u>Charity Groups</u> Alzheimer's Society	01751 477743

Hague & Dixon

SOLICITORS FOR THE
COMPLETE PROFESSIONAL
LEGAL SERVICE

**For all services contact:
Gordon Mellor or Mary Chappell
on 01751 475222**

12 Smiddy Hill, Pickering YO18 7AN
Also at Stamford Bridge 01759 372910
and York 01904 627111

Valerie Gardner The Old Manse

Middleton Road,
Pickering YO18 8AL



**Tel: (01751) 476484
Fax: (01751) 477124**

Situated only four minutes from North
York Steam Railway. All bedrooms en-suite,
mature gardens, on site parking,
open all year. Dinner available.

PICKERING TOWN GUIDE

Amelia Naylor Foundation	01751 476227
Amnesty International	020 7814 6200
Help the Aged Shop	
Market Place	01751 476942
Lady Lumley Foundation	472121/474271
Marie Curie Cancer Care	01723 378111
Multiple Sclerosis Shop	
Smiddy Hill	01751 477645
Macmillan Nurses	08088082020
NSPCC	01723580700
One World Week	
41 Potter Hill	01751 472727
Oxfam Group	01904 645279
Salvation Army Shop	
Birdgate	01751 472302
Save the Children Fund	01751 474181
St Catherine's Hospice Shop	
Birdgate	01751 477767
World Wild Life	
Fund for Nature	01483 426444
Yorkshire Cancer Research	01751 476354
Wilf Ward Family Trust	01751 474740

Animal Welfare

Eastgate Veterinary Centre	01751 472204
R.S.P.C.A.	08705 555999

Business Associations

Barclays, HSBC, NatWest, Yorkshire Bank, Yorkshire Building Society	See local Directory
Tourism Association	
North Yorkshire	01751 475432
Pickering 2020	01751 476541
ahorner2020@hotmail.com	

Churches, etc.

Kingdom Hall of Jehovah's Witnesses, Goslippgate	01751 417394
Methodist Church, Potter Hill	01751 472810
Pickering Christian Scientists	
42 Burgate	01439 788622
Religious Society of Friends Castlegate	01751 472827
Ryedale Evangelical Church	
Pickering Infants School	01751 476383

E & S Gott



Fine Individually Made Furniture
Antique Restoration
Wood Panelling
Upholstery
(range of pattern books available)

01751 472009

Priestley Butts, Whitby Road
Pickering, North Yorkshire YO18 7HL
www.eandsgott.com
email: info@eandsgott.com

Intuition

Natural Crystals from all over the world

Clairvoyant Readings

Angels, Candles, Wind Chimes,
Dream Catchers, Incense and Incense Holders

Reiki / Reiki with Crystals

Emotional Freedom Technique

Gently tap away your fears and phobias, etc!

The Square, Thornton-le-Dale, YO18 7LF

Tel: 01751 473846

Cundalls

• CHARTERED SURVEYORS • AUCTIONEERS
• VALUERS • LAND AND ESTATE AGENTS

Cundalls is a long established independent firm
with a multi-disciplined practice providing
expertise in property, agriculture and auctions.

40 Burgate, Pickering,
North Yorkshire YO18 7AU

Tel: 01751 472766

e.mail: pickering@cundalls.co.uk

website: www.cundalls.co.uk

PICKERING TOWN GUIDE

St Joseph's Roman Catholic Church, Potter Hill	01751 472727
The United Reformed Church Hungate	430689/476844
The Parish Church of St Peter and St Paul Churches Together in Pickering	01751 472983 01751 472827
Good News Bookshop	01751 476105

Education

Adult and Community Education

Askham Bryan College Swainsea Lane	01751 473431
Learning Centre (ICT, Basic skills etc.) The Ropery Centre	01751 475762
Pickering Community Education Centre	01751 473209
Ryedale University of the Third Age (U3A)	01751 476354
The University of Hull, Continuing Education	01482 465963 /466870

WEA (Workers Educational Association)	01751 431976
--	--------------

North Yorkshire County Council Schools

Lady Lumley's School (Secondary) Swainsea Lane	01751 472846
Pickering Community Junior School	01751 472873
Middleton Road Pickering Community Infant School, Ruffa Lane	01751 472620
St Joseph's Roman Catholic Primary School	01751 473102
Swainsea Lane	

Pre-School Provision

Pre-school

Parish Hall (Toddlers and Playgroup) Hallgarth	01751 472983
Methodist Hall (Toddlers and Playgroups)	01751 472810
Potter Hill St Joseph's Church Hall (Toddlers) Potter Hill	01751 472727
Humpty Dumpty Nursery Firthlands Road	01751 476728

Employment

Inland Revenue	0845 302 1433
Job Centre	01653 685848

Leisure, Tourism and Heritage

Environment and Heritage

Beck Isle Museum	01751 473653
Dalby Forest	
Forestry Commission	01751 472771
Guided Walks	01751 473791
Justice and Peace Group	01751 473488
National Trust	0870 458 4000
North York Moors Association	01642 700535
North York Moors	
National Park	01439 770657
North Yorkshire Moors	
Railway	01751 472508
Pickering Castle	01751 474989
Pickering and District	
Civic Society	01751 474095
Pickering Memorial Hall	01751 477522
Yorkshire Wild Life Trust	01904 659570

Cinema / Theatre

Castle Cinema, Burgate	01751 472622
Kirk Theatre Bookings Hungate	01751 474833
Memorial Hall, Potter Hill	01751 477522

Leisure Activities –

Children / Young People

(See Library for full current
information)

Northern Ryedale Leisure Centre

(Art attack and sports activities)	01751 476726
Beck Isle Museum Juniors	01751 473653
Connecting Youth Culture	
Arts Projects (Ryedale House)	01653 600666
Crusaders	01751 472624
Dancing Class	01653 393310
Gateway Special Needs Club	
Isabella Court	01751 474740
Guides, Brownies, Rainbows	01751 476609
Gymnastics, Ryedale Flames	01751 476726
Magic Moments Special Needs	
Youth Club	01653 699000
Youth Club Lunchtimes	
Mon-Fri Lady Lumley's School	01751 472846
Youth Club Evenings	
Tues&Wed	

PICKERING TOWN GUIDE

Lady Lumley's School	01751 472846	Ryedale tractor and engine club	01751 475015
Pickering Musical Society		<i>Film and Photography</i>	
Youth Section	01751 473637	Kirkbymoorside and District	
Pickering Junior Football Club	06153 697724	Camera Club	01723 859821
Pied Piper	01653 668551	Ryedale Film Society	01751 431230
Ryedale Child and		<i>Dancing</i>	
Youth Projects	01751 474747	Modern Sequence Dancing	01751 474095
Cubs, Scouts and Beavers	01751 476918	Scottish Country	
Stape Junior Band	01751 472004	Dance Society	01751 474018
Study Support Group		<i>Drama</i>	
Tues&Wed		Northern Lights	
Lady Lumley's School	01751 472846	Theatre Company	01751 476863
<i>Leisure Groups and Activities</i>		Stagecraft Ryedale	01751 474065
(See library for full current information)		Rural Arts on Tour	
<i>Art</i>		productions	01751 473488
Embroiderers Guild	01751 473875	Pickering Musical Society	01751 475152
Ryedale flower and		<i>Music</i>	
gardening club	01751 417629	Bell Ringers	01751 472983
Vale of Pickering Art Club	01653 692862	Chanticleer Singers	01751 431179
Busy Brushes		Jazz Society	01751 473524
(Painting and drawing classes)	01751 477121	Kirkbymoorside Baroque	
Rock Cottage ceramics		Orchestra	01751 433283
(Ceramics classes)	01751 475323	Pickering Musical Society	01751 475152
<i>Hobbies and Interests</i>		Ryedale Festival	01751 475777
Pickering Railway Modellers	01944 759067	Ryedale Medieval Singers	01751 476158

Beck Isle Museum of Rural Life

Award winning museum packed with collections from the Victorian, Edwardian and early 20th century periods

Bridge Street, Pickering
YO18 8DU

(Next to North York Moors Railway
opposite Memorial Hall)



Tel: (01751) 473653 Fax: (01751) 475996

Website: www.beckislemuseum.co.uk

Email: beckisle@aol.com

Opening Times: Daily, 10.00am-5.00pm
(last entry 4.15pm) March to end of October.
Special events weekends up to Christmas

VALE MOTORS

MALTON ROAD FILLING STATION
MALTON ROAD PICKERING
NORTH YORKSHIRE YO18 7JJ

TELEPHONE (01751) 475107

Proprietors: JC & P Ibbotson

Servicing, MOT Testing

Petrol & Diesel, Automatic Car Wash, Car
Accessories, Confectionery, Cigarettes, Solid Fuel

Open:

6.30am to 9pm (Sundays 7.30am to 9pm)

♥ Reed's ♥

36, Market Place, Pickering

01751-474890

Newspapers (Delivered seven days a week)

Confectionery, Stationery, Cards,
Gifts, Books & Toys

Searching for an original present
for any occasion?

Visit our unique Gift room on the first floor

Bob a Job

Need those jobs done? Small or large
No problem!

Call handyman Bob Taylor
Kirkbymoorside



Tel: 01751 433482
Mobile: 07742 745124

PICKERING TOWN GUIDE

Ryedale Choral Union	01751 475793
Stape Original Band	01751 477796
Stape Silver Band	01751 472004
<u>Women's Groups</u>	
Women's Institute	01751 472868
Yorkshire Country	
Women's Association	01751 476348
<u>Gardening / Horticultural / Farming</u>	
Pickering In Bloom	01751 476610
Allotments Association	01751 473417
Beekeepers Association	01751 473381
Hardy Plant Group	01751 417692
National Farmers Union	01904 451550
Pickering and District	
Horticultural Society	01751 477546
Pickering Fishery Association	01751 474052
Pickering Trout Farm	01751 472415

Housing

Housing Association (Yorkshire)	01653 600300
Housing Benefits	01653 600666

International Links

Corbie (France) Town Twinning	01751 476503
-------------------------------	--------------

Media

Newspapers	
Gazette & Herald - weekly	01653 693212
Pickering Beacon - quarterly	01751 472991
Ryedale Mercury - weekly	01653 600051
Scarborough Evening News - daily	01723 363636
Evening Press - daily	01904 653051
Radio York	01904 641351

Sport and Recreation

Pickering Athletics Club	01751 472877
Pickering Junior Football Club	01751 473697
<u>Recreation Club</u> (Bowls, cricket, football and running) Mill Lane	01751 473317
<u>Ryedale Sports Club</u> (Badminton, cricket, croquet, football, netball and table tennis)	01751 474184
<u>Northern Ryedale Leisure Centre</u> (Indoor & Outdoor facilities, aerobics, cricket, badminton, weights, yoga, hockey, netball, volleyball and judo)	01751 476726

Swimming

Swimming club/classes, sub aqua club	01751 473351
Ryedale swimming club	01751 431961
<u>Walking Groups</u> Information from T.I.C.	01751 473791

Library (Pickering Community Resource Centre)

0845 300 5157
(local number)

North Yorkshire County Council's new Community Resource Centre at the Ropery, Pickering opened in September 2005 and includes a Library and Information Centre, with £30,000 worth of new stock, a café area and extra computers. Other council services such as Employment Training Services, Registration Services and Ryedale District Council Services are also accessible at the premises. North Yorkshire Social Services also hold fortnightly sessions to demonstrate useful equipment to help those with sight or hearing impairment.

The Library and Information centre has a wide range of services and stock, including language courses, CDs, Videos DVDs, Audio books and Playstation games. Large Print books are available, and there is a local and family history section and reference library with study area. There are photocopying facilities and a fax service, and meeting rooms available for hire. Regular storytimes for under-fives are held on Wednesday afternoons in term time, and videos and storytapes for children are available. From time to time staff hold ICT training sessions to help people get best use out of the 10 new computers. Anyone is welcome to drop in, have a coffee and read a magazine or newspaper but you can join to make full use of the facilities. All you need is proof of your name and address.

Local Government (local elections due 2007)

Pickering Town Council Town Clerk Andrew Husband	01751 476503
Pickering Town Council Memorial Hall, Potter Hill	

Pickering Town Councillors

Councillor A Aslett, Councillor Mrs M Danks, Councillor Mrs J Dixon, Councillor N Hargreaves, Councillor Mrs K Hartas, Councillor Mrs J Hepworth, Councillor S Jenson, Councillor M Jones, Councillor Mrs M Lowe, Councillor Mrs J Taylor and Councillor Mrs N Warriner.

Ryedale District Council

Ryedale House, Malton 01653 600666

Pickering

East Ward Councillors

Councillors A Aslett and Mrs L Cowling

Pickering

West Ward Councillors

Councillors Mrs J Taylor and Mrs N Warriner

North Yorkshire County Council

County Hall, Northallerton 01609 780780

Pickering Division Councillor

County Councillor Greg White

01751 473042

E-mail: cllr.g.white@northyorks.gov.uk

Member of Parliament

Mr J Greenway MP,
109 Town St, Old Malton,
YO17 7HD 01653 692023

Local MEPs

for Yorkshire and Humberside
Richard Corbett (Labour) 0113 245 8978
Timothy Kirkhope
(Conservative) 01904 781999
Linda McAvan (Labour) 01709 875546
Edward McMillan Scott
(Conservative) 01386 552366
Diana Wallis
(Liberal Democrat) 01482 666898

Electoral Registration 01653 600666

Market Days

Open market
All day Monday, Market Place 01653 600666
Farmers' Market
First Thurs each month,
Market Place 01751 472726

**MIDDLETON
SERVICE STATION**



OPEN 7 DAYS A WEEK
Monday – Saturday 7am–10pm
Sunday 8.00am–10pm

We operate a large convenience store supplying groceries, an extensive range of chilled and frozen products together with a well stocked off-licence. We also sell newspapers, magazines and quality fruit and vegetables.

If there is anything you would like that we are not stocking we will be only too happy to get it for you.

As one of TOTAL's main dealer sites we supply petrol and diesel at extremely competitive prices.

We carry a full range of car products and oils.

Call in and enjoy easy parking, a pleasant shopping experience and a warm welcome from our friendly staff.

Telephone 01751 477400
MIDDLETON, PICKERING



Hutton le Hole, York

Open most of the year - explore the wide range of historic buildings rescued from around the area



They and their contents bring to life the lives of ordinary people from prehistoric times to the present day

See our website for further details of our super events

www.ryedalefolkmuseum.co.uk

Telephone 01751 417367



**Boulton & Cooper
Stephensons**

Estate Agents ● Chartered Surveyors ● Valuers

- Residential
- Agricultural
- Fine Arts
- Commercial

St. Georges House, Pickering YO18 7AE

Tel: 01751 472724 Fax: 01751 477238

www.boultoncooper.co.uk

SM AUTO-CARE

19/21 Enterprise Way,
Thornton Road Industrial Estate, Pickering

Specialising in Mercedes-Benz servicing and repairs
All makes of vehicles serviced
MOT testing station plus class 7
Bosch Motor Plus Agent
Handheld tester for Bosch systems
Diagnostics and fault finding

Car Sales

Tel: (01751) 474847

Fax: (01751) 477725

www.smautocare.co.uk



Prostyle

unisex salon

50 Market Place
PICKERING

t: 01751 475747

St Joseph's Catholic Church

Potter Hill, Pickering

"The Secret Jewel in Pickering's Crown"



Come and visit this beautiful church,
recognised by English Heritage
as one of the One Hundred Best
Catholic Churches in England.

Sunday Mass Times:

October to March 8.30am & 11am

April to September 8am & 11am

Father Bill East, 41 Potter Hill, Pickering

Telephone: 01751 472727

www.stjopickering.org

Sevenford House



Luxury Bed + Breakfast

Rosedale Abbey

Pickering YO18 8SE

Proprietor Linda Sugars

Tel: 01751 417285

www.sevenford.com

Originally a Victorian vicarage set in four acres of
wonderful gardens overlooking the picturesque village of
Rosedale. Sevenford House is full of character and charm,
offering every comfort to its guests.

Open All Year

ENTERPRISE MOTORS LTD

MOT TESTING – SERVICING & REPAIRS
ADVANCED ENGINE DIAGNOSTICS
COURTESY VEHICLES AVAILABLE

25a Enterprise Way,
Thornton Road Industrial Estate,
Pickering YO18 7NA



Tel: 01751 477255

Fax: 01751 477253



PICKERING RECREATION CLUB

AVAILABLE FOR HIRE

THE IDEAL VENUE FOR ALL SPECIAL OCCASIONS

WEDDING RECEPTIONS & ANNIVERSARIES

BIRTHDAY PARTIES

CHRISTENINGS

FOR FURTHER DETAILS

TEL: 01751 473317 OR 472057

KIRKBYMOORSIDE GOLF CLUB

"The Friendly Club"

18 holes with outstanding views and the warmest of welcomes.

GREEN FEES:

Weekdays £22 & £28 Weekends £32

NEW MEMBERS WELCOME

For details please call

01751 431525 or 01751 430402

Manor Vale, Kirkbymoorside,

North Yorkshire YO62 6EG

Email: enqs@kirkbymoorsidegolf.co.uk

Website: www.kirkbymoorsidegolf.co.uk

DUNNETT PROPERTY SERVICES

HOME MAINTENANCE AND REPAIRS

Alterations and Small Extensions

EST. 1966

Proprietor: Geoffrey C. Higgs

12 Willow Rise, Kirkbymoorside, York, YO62 6BZ

Tel: 07831 170605 or 01751 430330

PICKERING TOWN GUIDE

Country Market

Thursday morning,
WRVS centre 01751 472868

Car Boot Sale

(Sundays & Bank Holidays
March-Oct), Malton Road 01751 473780

Antique Market

Every day off Market Place 07967 608181

Meeting Rooms for hire

Memorial Hall, Potter Hill 01751 477522

British Legion,
Champleys Yard 01751 474448
Conservative Club
Market Place 01751 472633
Friends Meeting House
Castlegate 01751 472827
Liberal Club
Smiddy Hill 01751 432652
Methodist Church Rooms
Potter Hill 01751 474941
Northern Ryedale
Leisure Centre,
Swainsea Lane 01751 476726
WRVS Centre,
Hungate 01751 472681
Parish Hall,
Hallgarth 01751 473226
Pickering Recreation Club
Mill Lane 01751 473317
Pickering Working Men's Club
Southgate 01751 473534
Roman Catholic Hall
Potter Hill 01751 472727

Cottage Curtains

BESPOKE SOFT FURNISHINGS

Bespoke curtain making & fitting service
with advice on colour schemes & design

Curtains, pelmets, cushions, roman & roller
blinds, bedspreads, headboards etc

Fabrics, tracks & poles available to order

Call: 01751 433033

The Cottage, Normanby, York

The Gift Box

Chestnut Avenue,
Thornton-Le-Dale,
North Yorkshire,
YO18 7RW

01751 474456

Located in the heart of the picturesque
village of Thornton-le-Dale, we offer
something for everyone including:

- ◆ Ladies' & children's clothing
- ◆ Leather goods
- ◆ Gifts & souvenirs
- ◆ Pictures & posters
- ◆ Greetings cards & postcards
- ◆ Fine foods & soft drinks
- ◆ Ice cream & confectionery

*Come and pay us a
visit and see for
yourself.*



CRYSTAL CARS

LUXURY MERCEDES 1-8 SEATER

LOCAL / LONG DISTANCE

AIRPORTS, CRUISES, TRAINS, etc.

01751 - 477613

07891 - 097608

Roaminy Travel

< See more of North East Yorkshire >

33 Seater Coach

< Day Tours <> Private Hire >

< and Airport Runs >

RING 01751 477608

For further details

PICKERING TOWN GUIDE

Ryedale Sports Club Thornton Road	01751 474184
United Reformed Church Hungate	01751 472998

Political Parties and Associations

Ryedale Conservative Association	01653 693502
Ryedale Labour Party	01751 473488
Ryedale Liberal Democrats	01651 691402

Tourist Information Centre 01751 473791
Information for visitors and residents about local and Yorkshire events, sports and leisure activities and attractions. Timetables for bus, train and Moorsbus. Information and advanced booking for accommodation in Pickering and surrounding area as well as elsewhere in the UK. Tickets on sale for local events, concerts and plays. Guide books, leaflets about walks and cycle routes. Gifts, postcards and local crafts on sale. Book and start here for Town Guided Walks.
E-mail: pickeringtc@btconnect.com

Web sites

www.pickering.gov.uk
www.beckislemuseum.co.uk
www.english-heritage.org.uk/yorkshire
www.forestry.gov.uk/dalbyforest
www.thisisryedale.co.uk/ryedale/tourism
www.northyorkshiremoorsrailway.com
www.pickering-beacon.co.uk
www.pickeringtown.net
www.ryedale.gov.uk/tourism
www.ryedalefestival.co.uk
www.yorkshiretravel.net
www.pickering-memorial-hall.co.uk
www.visit-yorkshire.com
www.pickeringinbloom.co.uk
www.moortoseacycle.net
www.moors.uk.net



Food & Drink

IN AND AROUND
PICKERING

THORNTON LE DALE FISHERIES

Fish & Chips

Open 7 Days A Week

Take Away or Eat In

Telephone Orders Welcome

We Will Deliver Your Party Order

Also Parties Catered for

Contact Steve or Karen

Tel: 01751 474502



THE HORSESHOE INN
Main Street, Levisham, Pickering

Call Today 01751 460240

www.horseshoelevisham.co.uk

A passionate family run inn situated in the heart of the North Yorkshire Moors, with a warm and homely atmosphere. Serving generous portions of fantastic rustic food by a blazing log fire, a connoisseur's wine selection and a good nights rest in one of our six bedrooms...

An experience not to be missed!



Coxwold Tearooms

SCHOOL HOUSE, COXWOLD YORK YO61 4AD

Traditional clotted cream teas, delicious light lunches or a Sunday roast beef lunch can all be enjoyed in our Georgian Tearooms.

Group outings of up to 50 can be catered for.
Bed & Breakfast

Open Wed to Sun inc 12.30 to 5.00
please call us on 01347 868077

e-mail: coxwold.tearooms@btconnect.com
www.coxwoldschoolhouse.co.uk

EASTGATE TEA ROOMS & RESTAURANT

1 Eastgate Square, Pickering, North Yorkshire YO18 7DP

Tel: 01751 475431

9.00am to 8.00pm High Season
9.00am to 4.30pm Low Season



Specialists in home baking

Snack or full meal

Private Parties
and groups
catered for, sample

menus available on request

eastgate.tearooms@tesco.net

Pizza, Pasta, Burgers, Kebabs
& Southern Fried Chicken

01751 476622

Open 7 Days 4.30pm - Midnight

Free Local Deliveries On Orders Over £7.00 Within 2 Miles
(Other area charges apply)



Delivery Times:
5.00pm - Till Late

42a Hungate,
Pickering, YO18 7DJ

GREEN MAN GALLERY

8 PARK STREET
PICKERING

NORTH YORKSHIRE
YO18 7PJ

TEL. 01751 472361

krista@greenmangallery.plus.com

The Castlegate Taberna

Licensed Spanish Restaurant &
Tapas Bar serving a taste of
Spain in Ryedale



Open

Monday	5pm - 9pm
Saturday	11am - 9pm
Sunday	closed

1 Castlegate, Pickering
01751 476 481

www.CastlegateTaberna.co.uk
info@CastlegateTaberna.co.uk

The Cayley Arms



Allerston,
Pickering

The Cayley Arms is a charming B & B
in the heart of North Yorkshire.

Convenient for Scarborough, Whitby,
York, Malton and Hemsley.

Guests can relax in our spacious bar or
homely lounge beside a warming open fire.

*The perfect location for walking, Mountain Biking or
exploring Dalby Forest.*

Five attractively decorated en-suite rooms
with all amenities.

Superb value for money food and an excellent
variety of beers and lagers.

Tel: 01723 859338

BARBOUR • TRICKER'S • GURTEEN • VIYELLA • DOUBLE TWO • MISH MASH

VAN DAL • BARBOUR • TRICKER'S • BIANCO • MISH MASH • FRED PERRY • MELKA • GURTEEN • MAGEE



By appointment to
His Royal Highness The Prince of Wales
Shoe Manufacturers

Tricker's



**18 MARKET PLACE, PICKERING,
N. YORKS YO18 7AE**

Tel: 01751 474486 fax: 01751 476467

shops also at
London, 67 Jermyn Street.
Bath, 9 Abbey Green.

www.trickers.com

BROOK TAVERNER • FRED PERRY • FINN KARELIA • BRENDILLA • TRICKER'S • GURTEEN • MAGEE

MAGEE • LYLE & SCOTT • VAN DAL • HODGSON • BEN SHERMAN • TRICKER'S

co-operative

smile!



we're **fresh**, we're **local** and
we're **different!**

Monday to Saturday 8.30am to 8pm
Sunday 10am to 4pm



Champley Mews, Pickering



The convenient place to pay for:
gas • electricity • water • cable •
television • mobile phone top-ups

Your Community Retailer

www.coop.co.uk